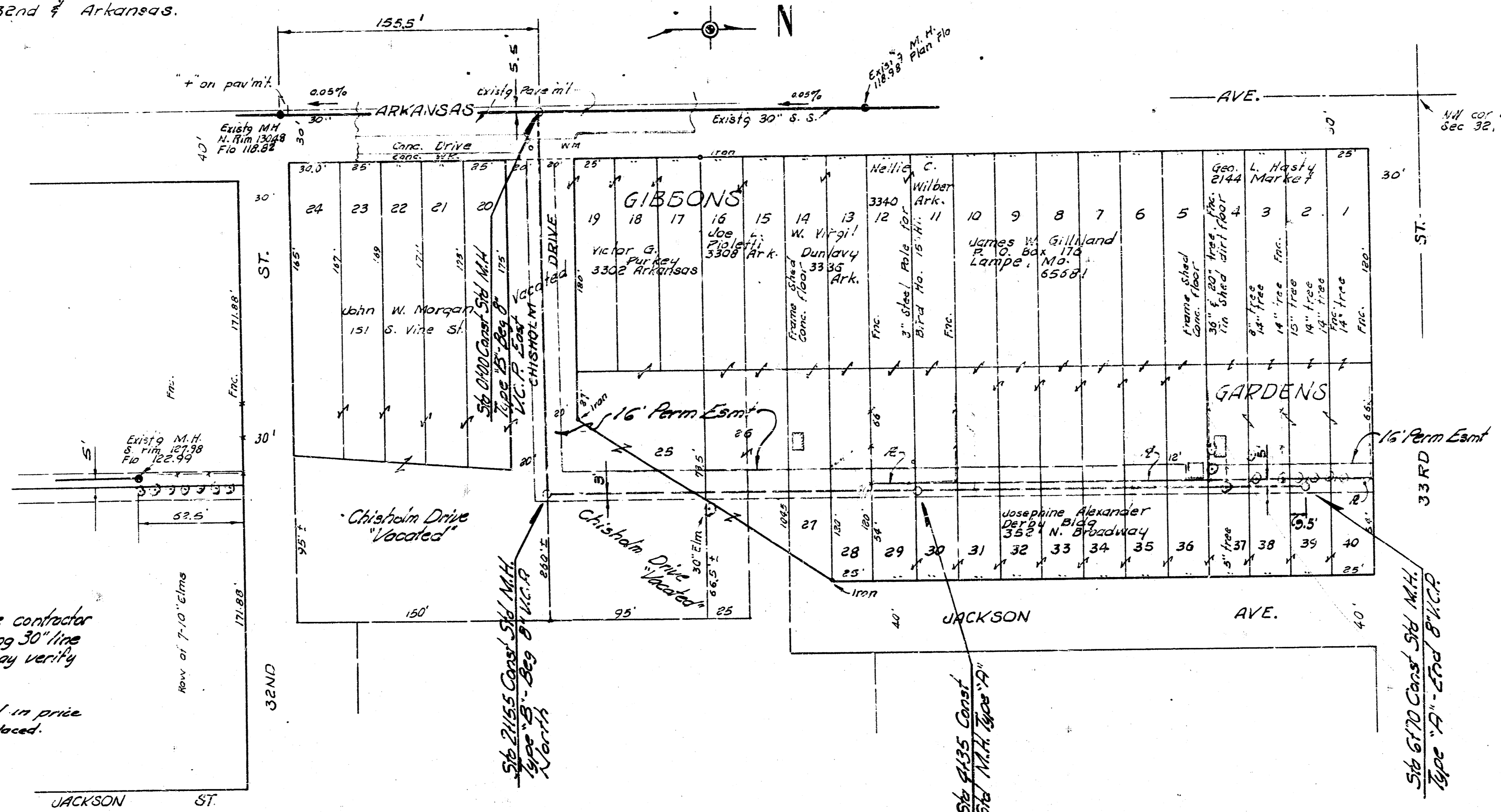


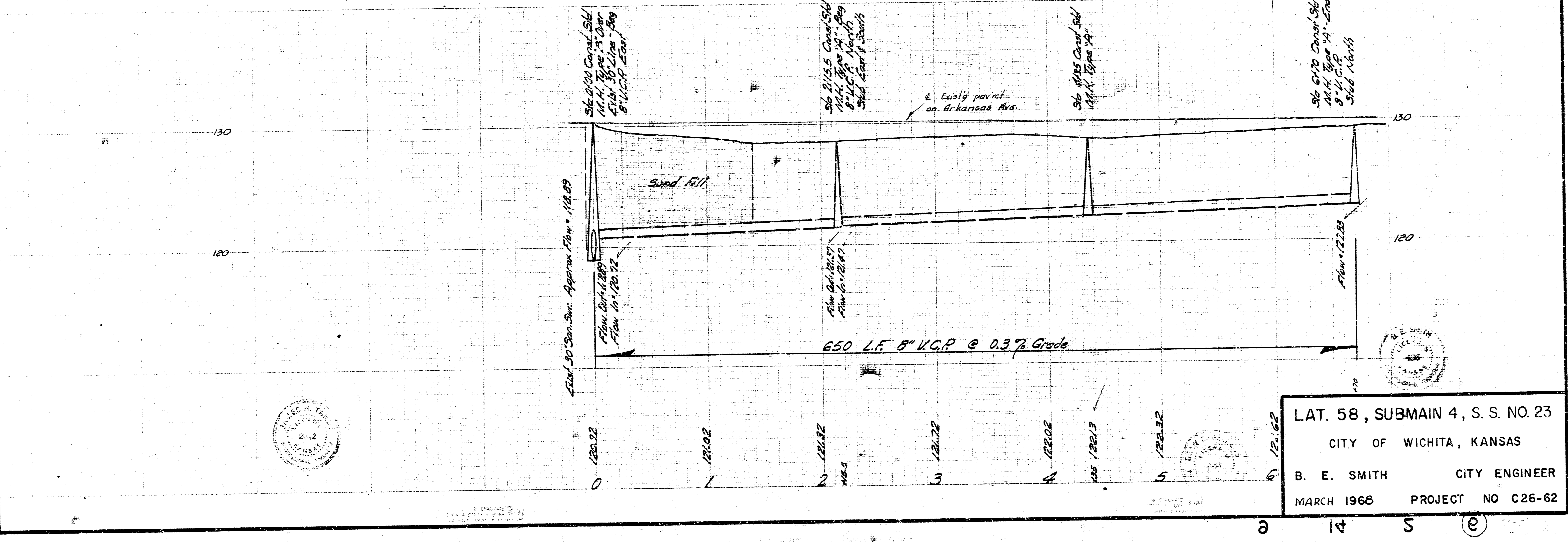
B. M. 130.97 R. R. Spike N. S. P. P. S. W. 32nd of Arkansas.



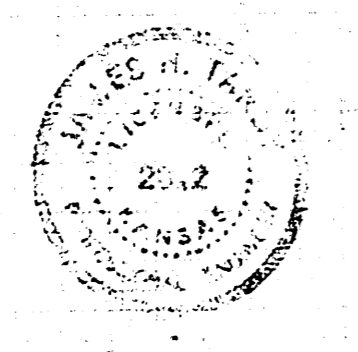
Plan Scale 1" = 40'  
 Profile Scale 1" = 40' Horiz.  
 1" = 4' Vert.

Survey by C. E. Smith  
 Checked by J. H. ...

Note: Prior to staking project the contractor shall excavate flow at existing 30" line so that the field engineer may verify profile elevations.  
 L.F. Sewer Joint to be included in price bid for Part Rem. & Replaced.



LAT. 58, SUBMAIN 4, S. S. NO. 23  
 CITY OF WICHITA, KANSAS  
 B. E. SMITH CITY ENGINEER  
 MARCH 1968 PROJECT NO C26-62



9 14 5 9