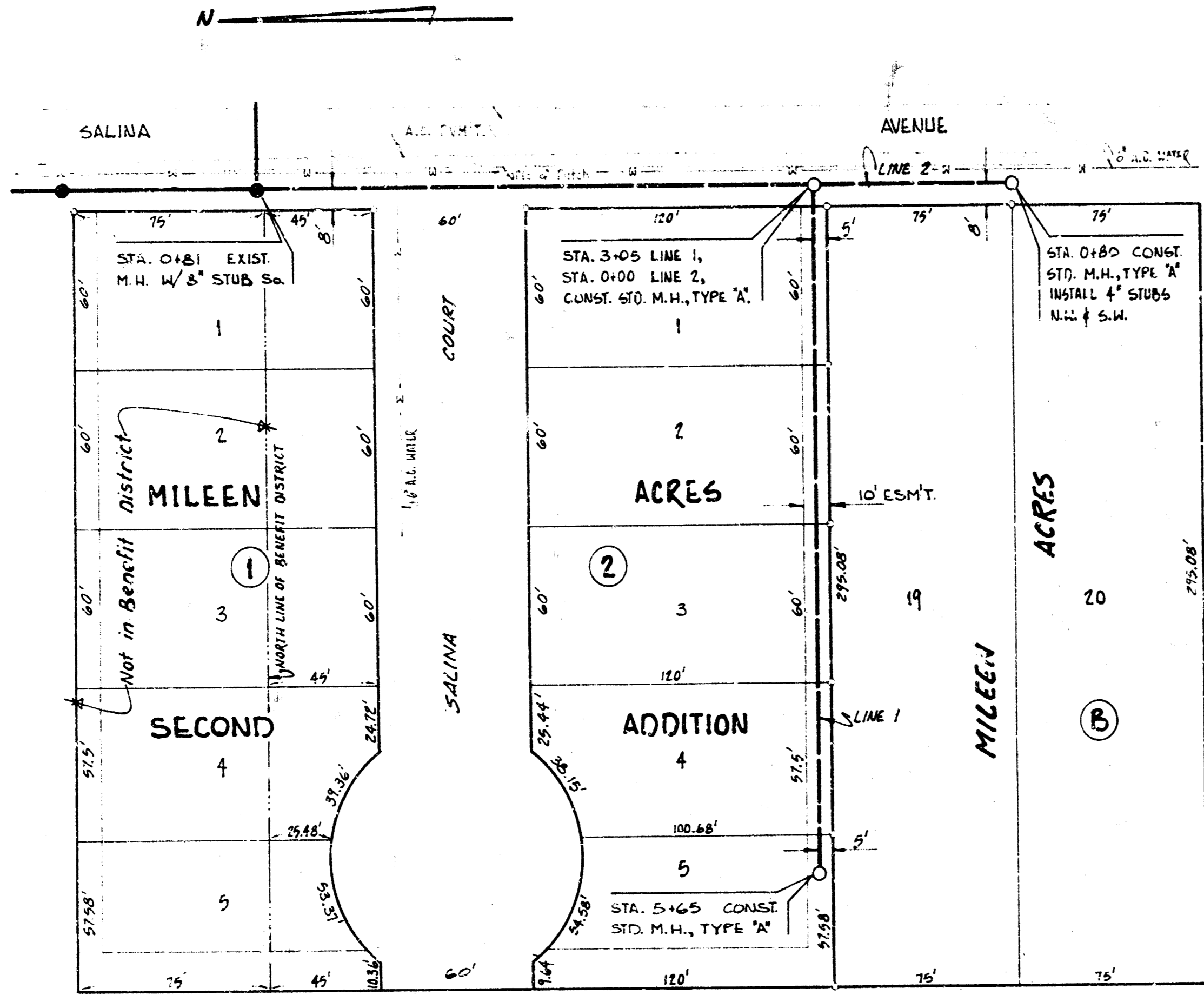
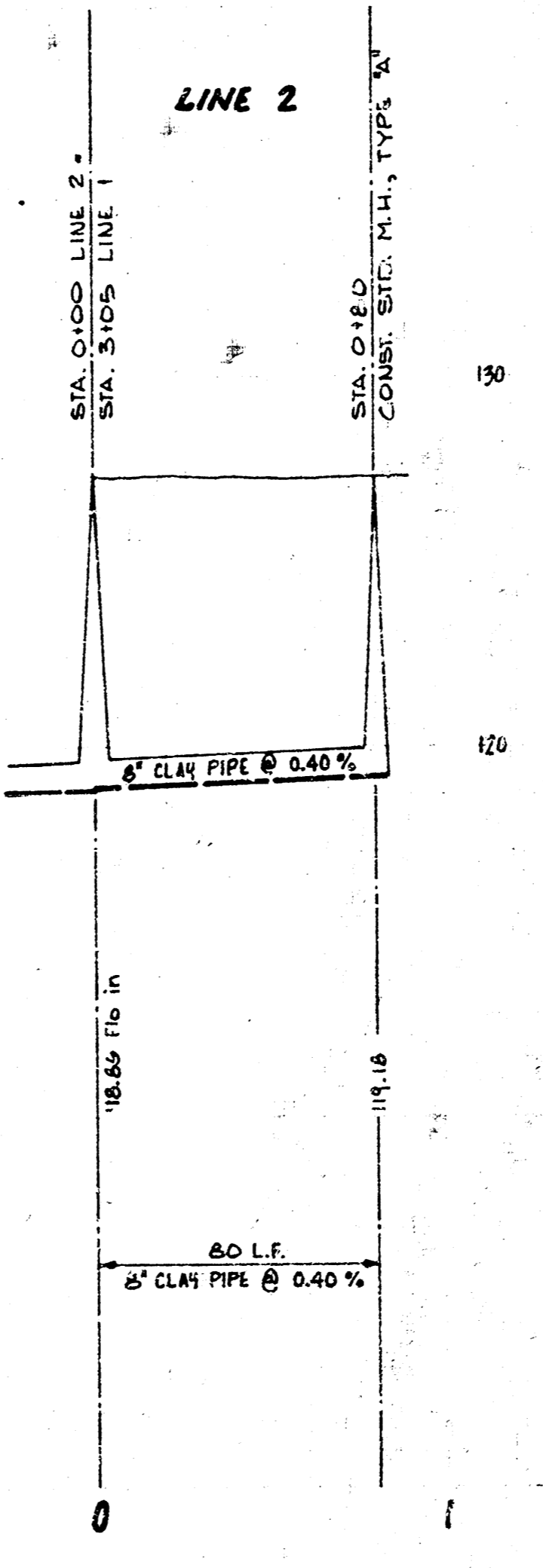
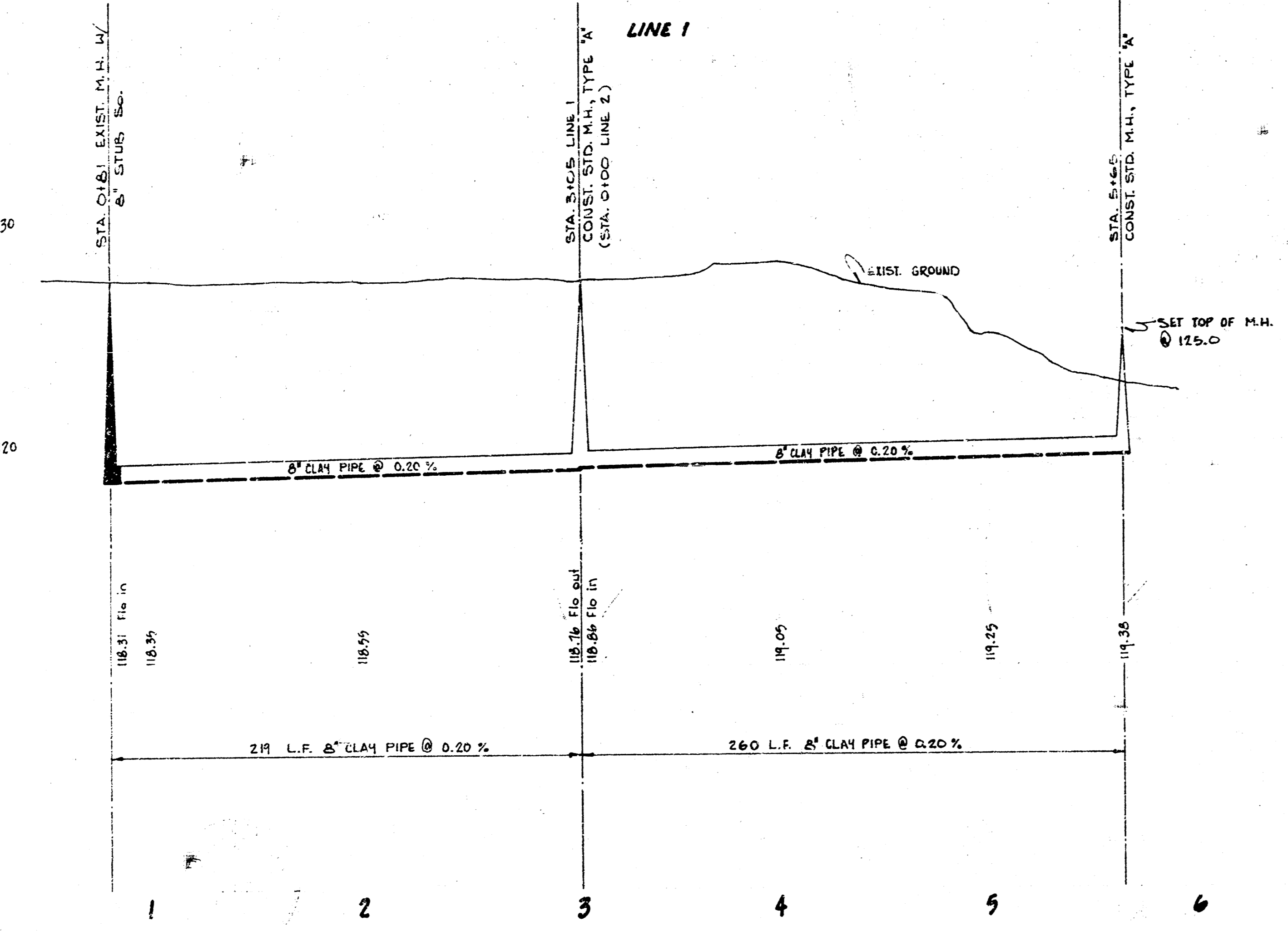


SURVEYING APRIL 1957
 PLAN SHEET
 CHECKED:



SCALES:
 PLAN 1"=40'
 PROFILE 1"=40' HORIZONTAL
 1"=4' VERTICAL

D.M. 10.14 A.M. CAR. CONC. BASE TO BRICK SIGN (ALL PETS HOSPITAL) 300' E. OF SALINA AVE. ON SW SIDE 29th ST. NO.



Lat. 73, Sub. 4, S5. No. 23
 CITY OF WICHITA, KANSAS.
 B.E. Smith, City Engineer
 Date NOV 1970 Project No. C20-54