

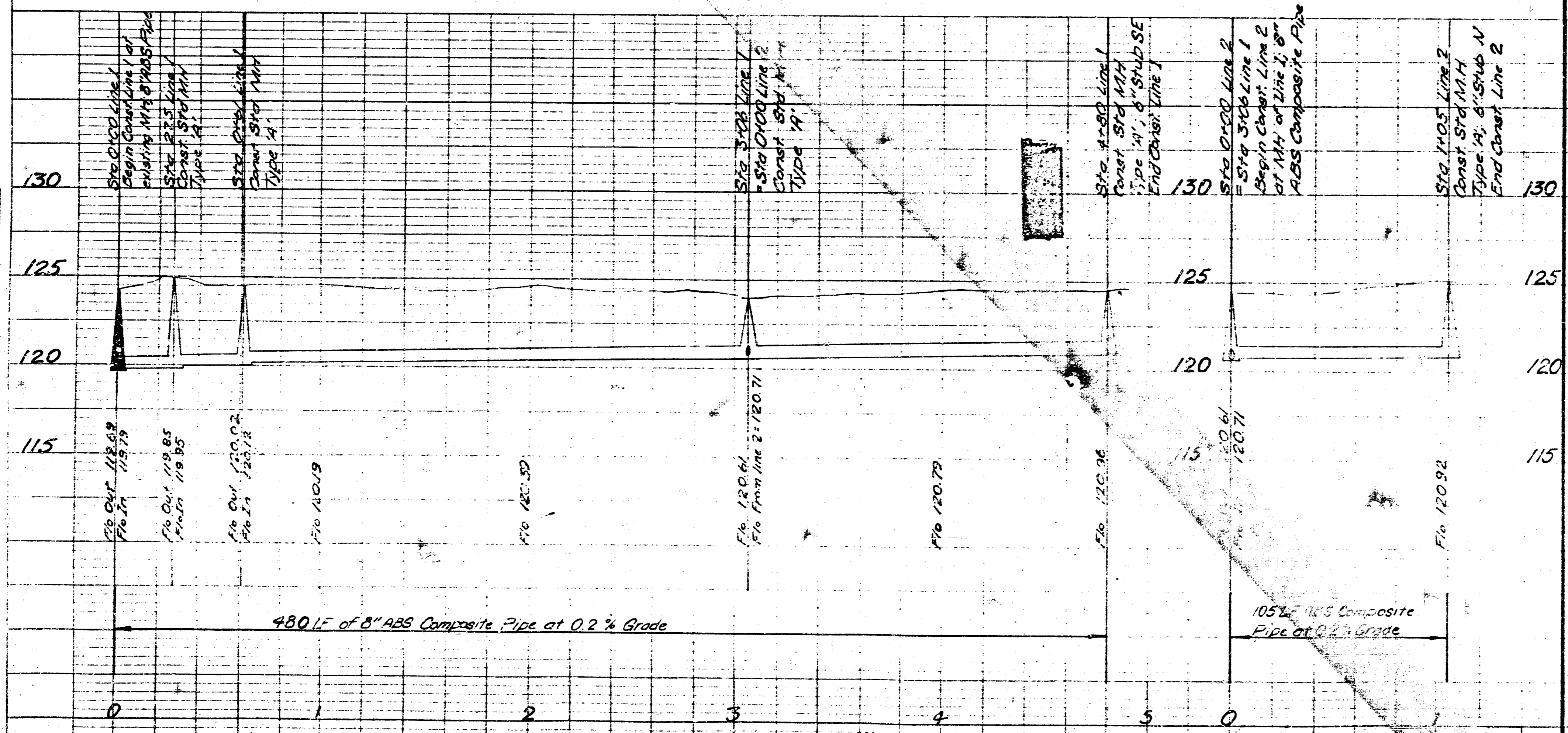
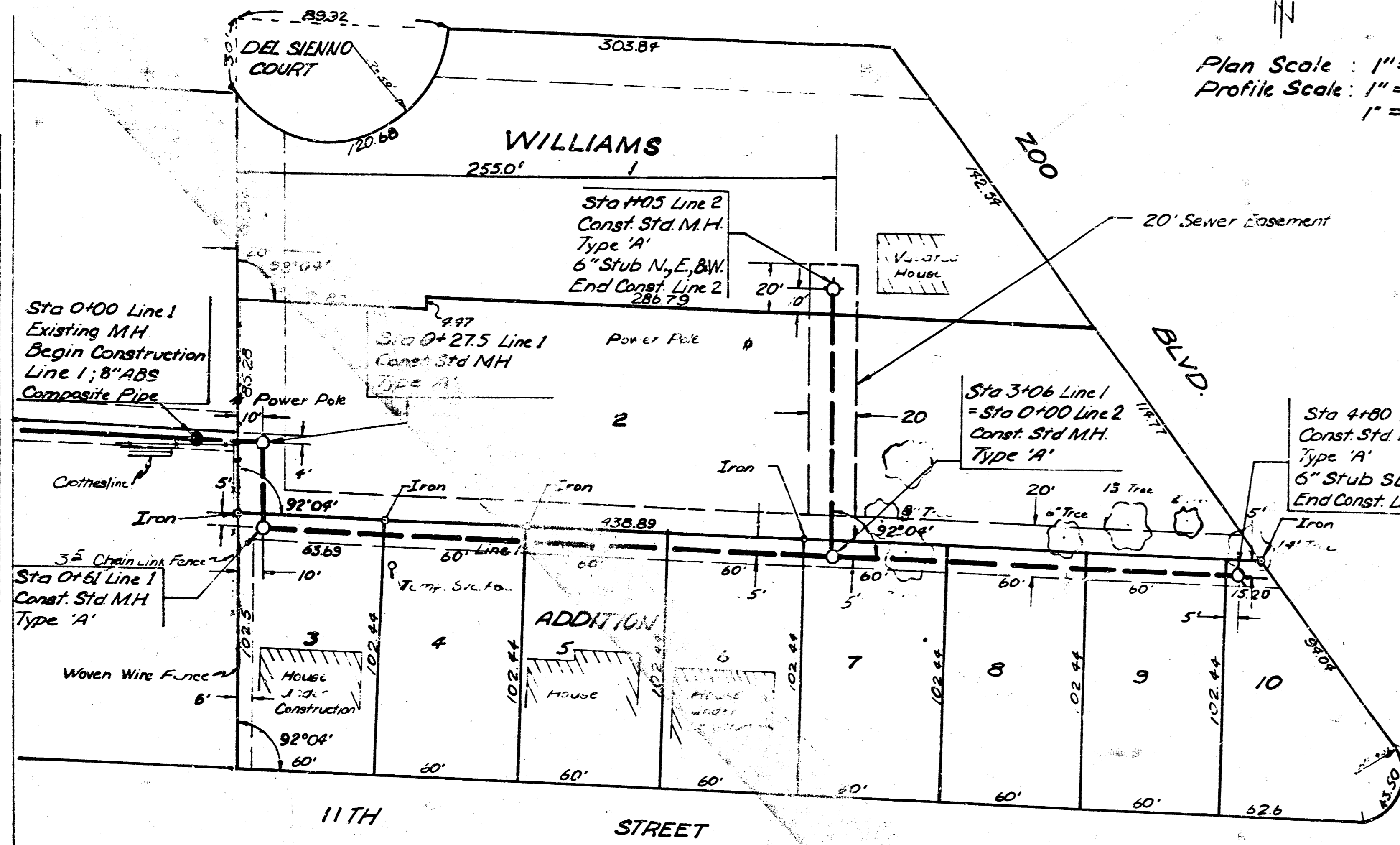
B.M. 121.89 City Std. Disc 24' South & 52' West of E of West Street and Ninth Street.

Field Engineer to make ties to all irons.  
Irons disturbed or destroyed are to be replaced.  
Tree removal is to be determined by the Field Engineer.  
All trees which can be saved will be saved.

Original filed in  
hold for R/W.

Plan Scale: 1" = 40'  
Profile Scale: 1" = 40' Horiz.  
1" = 5' Vert.

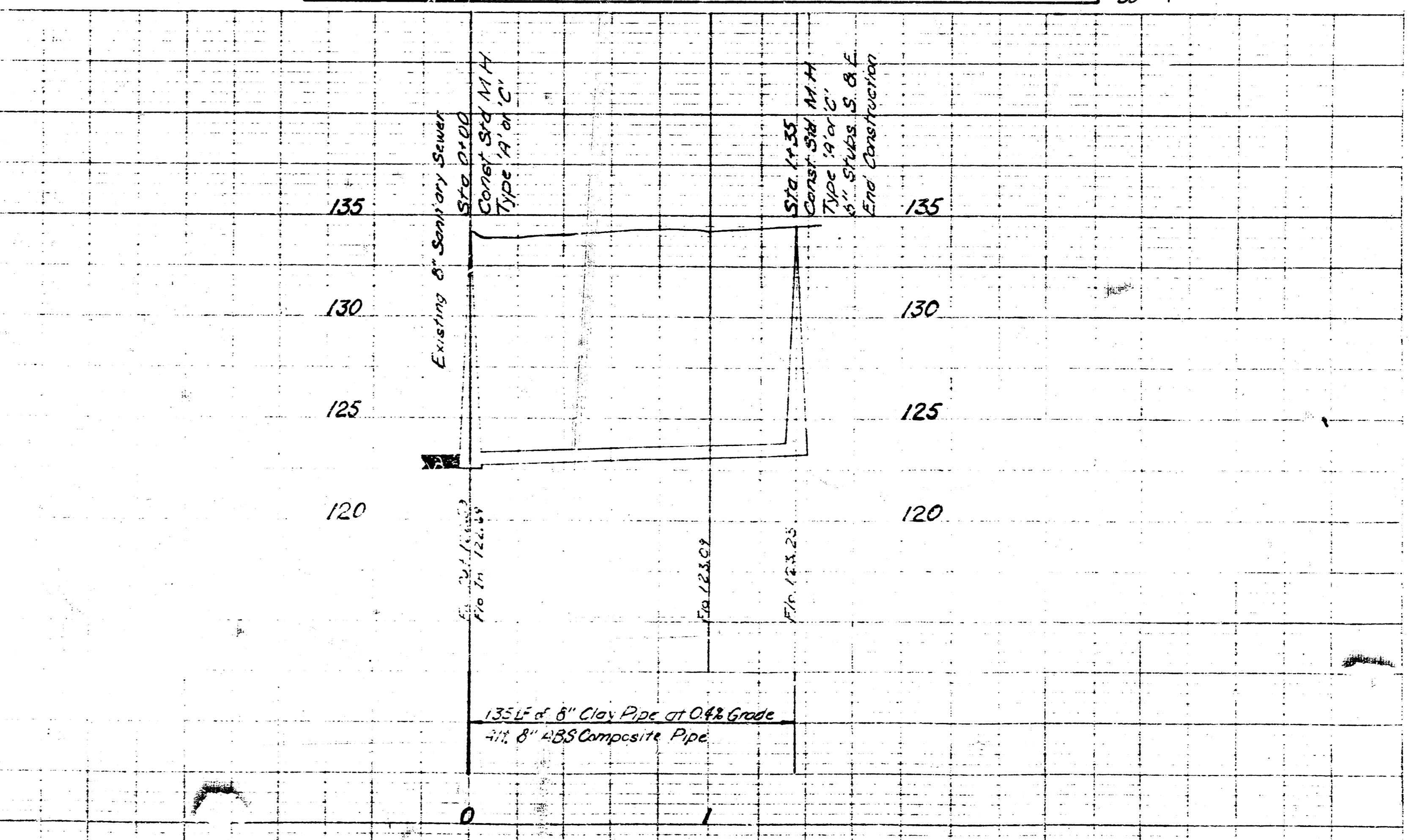
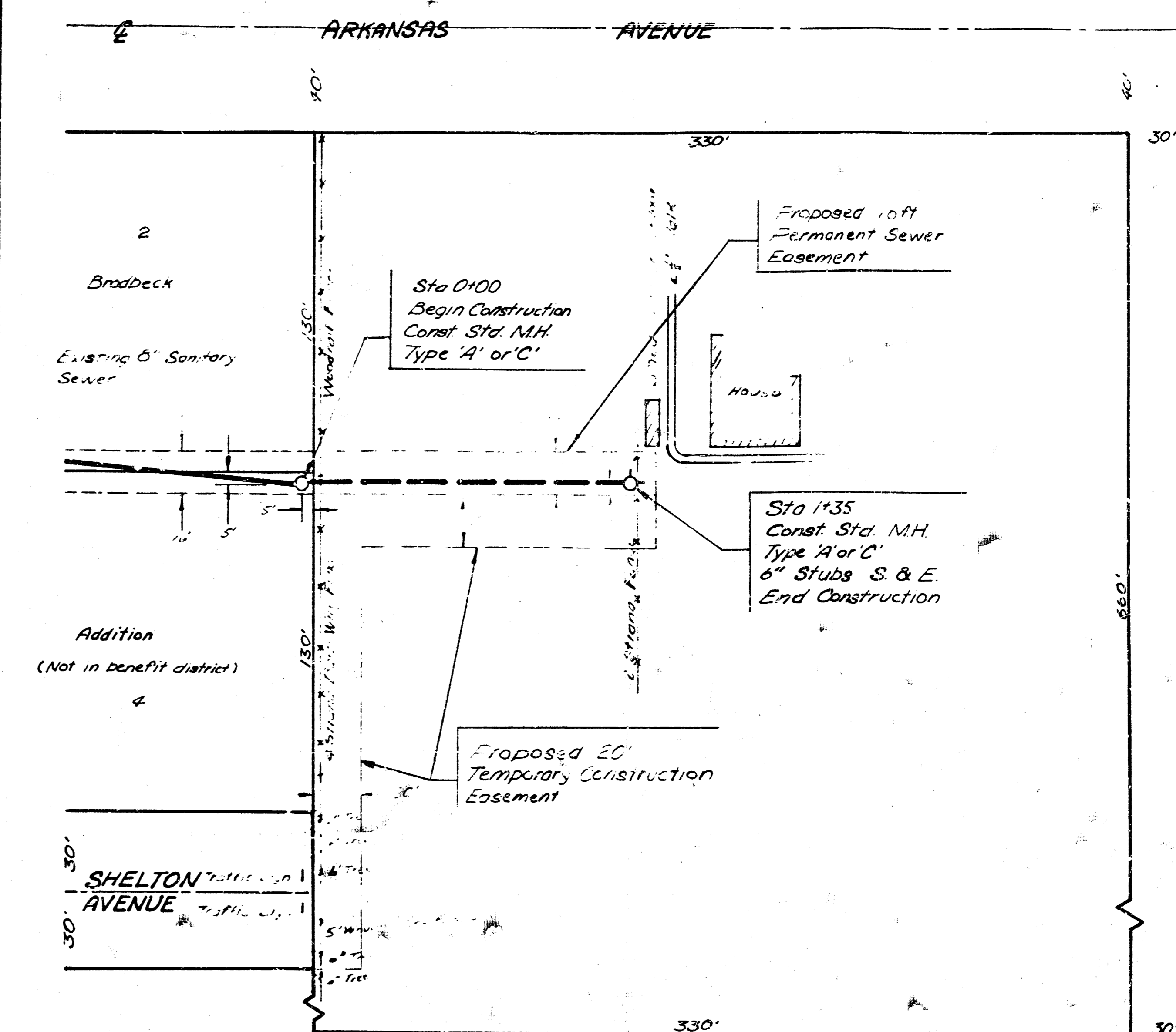
PLAN  
SHEET  
NO. 1 OF 2  
DATE  
1957



LAT 222 MAIN 5 S.S. 22  
CITY OF WICHITA, KANSAS  
R. W. LINN CITY ENGINEER  
DATE: PROJECT NUMBER: DBKL57E059

B.M. 129.81 City Std. Disc 32' South & 22' East of W of 33rd St North & Arkansas Avenue.  
B.M. 132.66 Southeast corner concrete step of house # 3245 Arkansas Avenue.  
B.M. 130.51 Top of East curb of Arkansas Ave. at South line of 32nd St North being 29.5 ft South of thimble on E.

Plan Scale: 1" = 40'  
Profile Scale: 1" = 40' Horiz.  
1" = 5' Vert.



LAT 91 MAIN 4 S.S. 23  
CITY OF WICHITA, KANSAS  
R. W. LINN CITY ENGINEER  
DATE: PROJECT NUMBER: DBKL57Q08