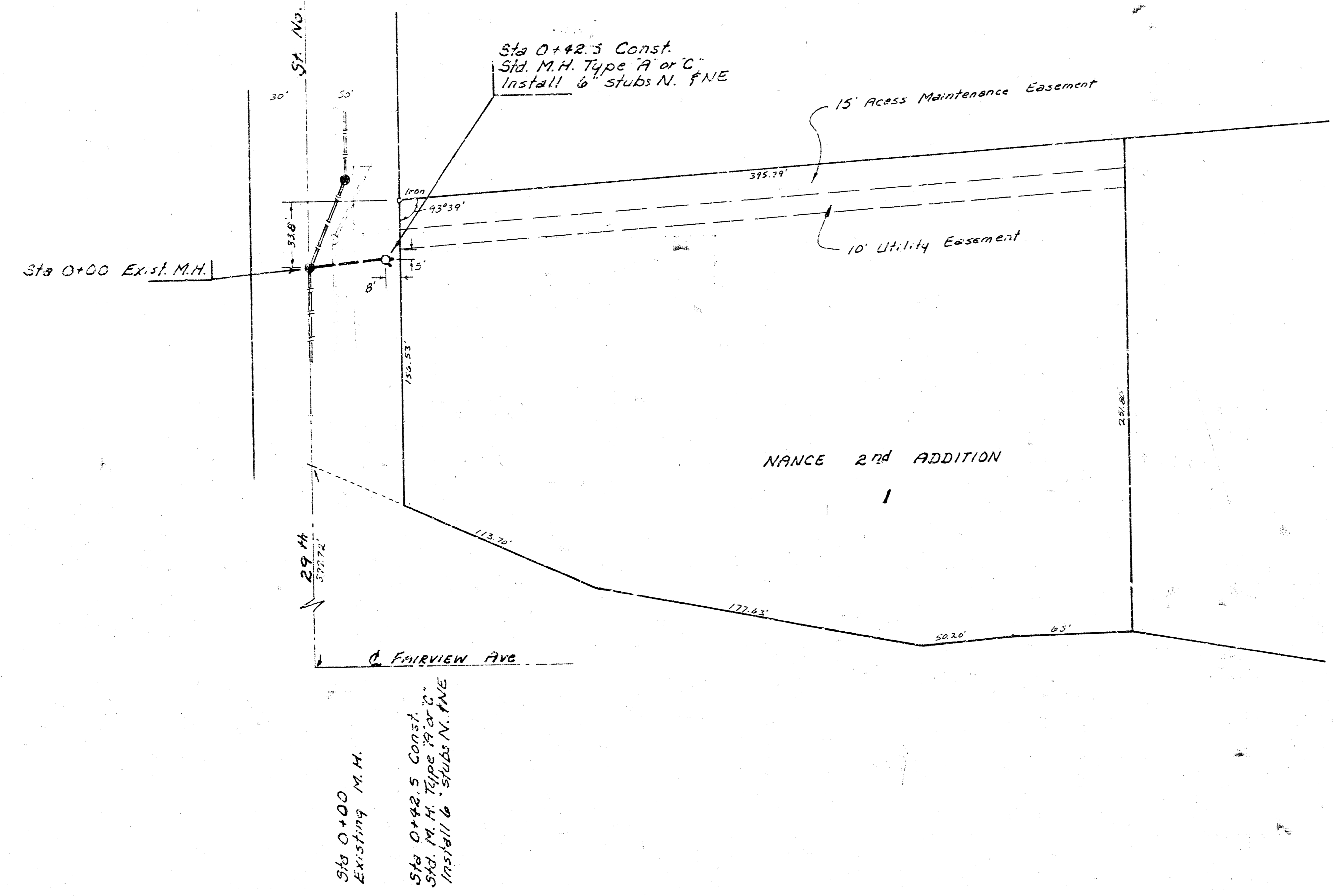


R. K. Cook
R. Land...

244.36



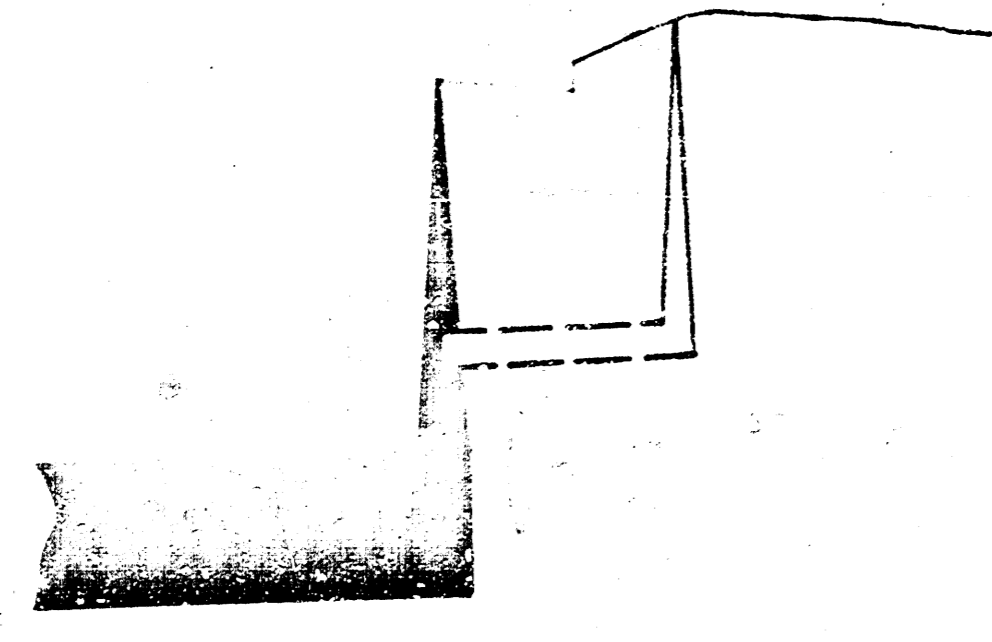
Scale Plan 1" = 40'
 Profile 1" = 40' Horz.
 1" = 5' Vert.

B.M. 128.967 City Disc. 32' S. and 25' E.
 of E. both 29th St. No. and Arkansas

B.M. 128.16 " + 5' face conc. walk SE. corner
 bridge on 29th St. No. between Jackson
 and Fairview.

130
 125
 120
 115

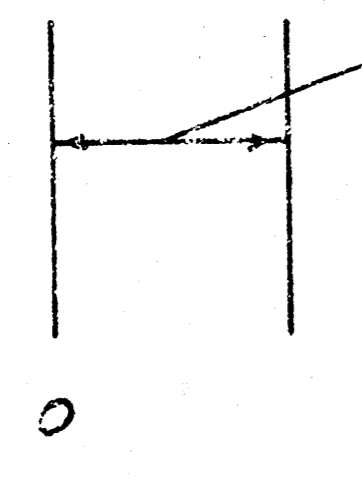
130
 125
 120
 115



118.60 Pk 36"
 121.54 Pk 8" m

121.71 Pk

42.5 L.F. of 8" Ductile Iron Pipe @ 0.40% Grade



LAT 99, MAIN 4, SANITARY SEWER NO. 23
 CITY OF WICHITA, KANSAS
 DEAN SELLERS — CITY ENGINEER
 PROJ. NO. 468-76245-8C789-000-000-001

FILMED FROM THE BEST
 AVAILABLE COPY.....

14 5 2 3 1/2