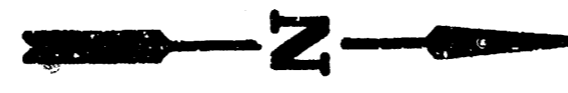


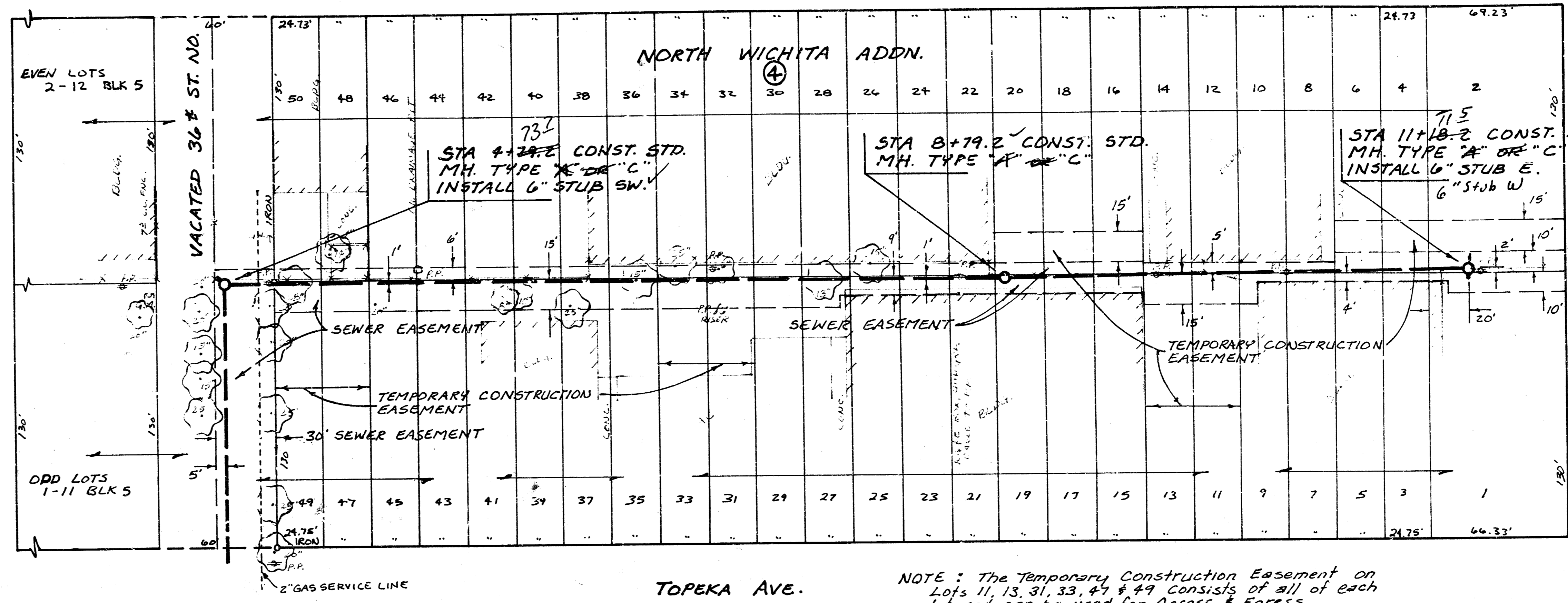
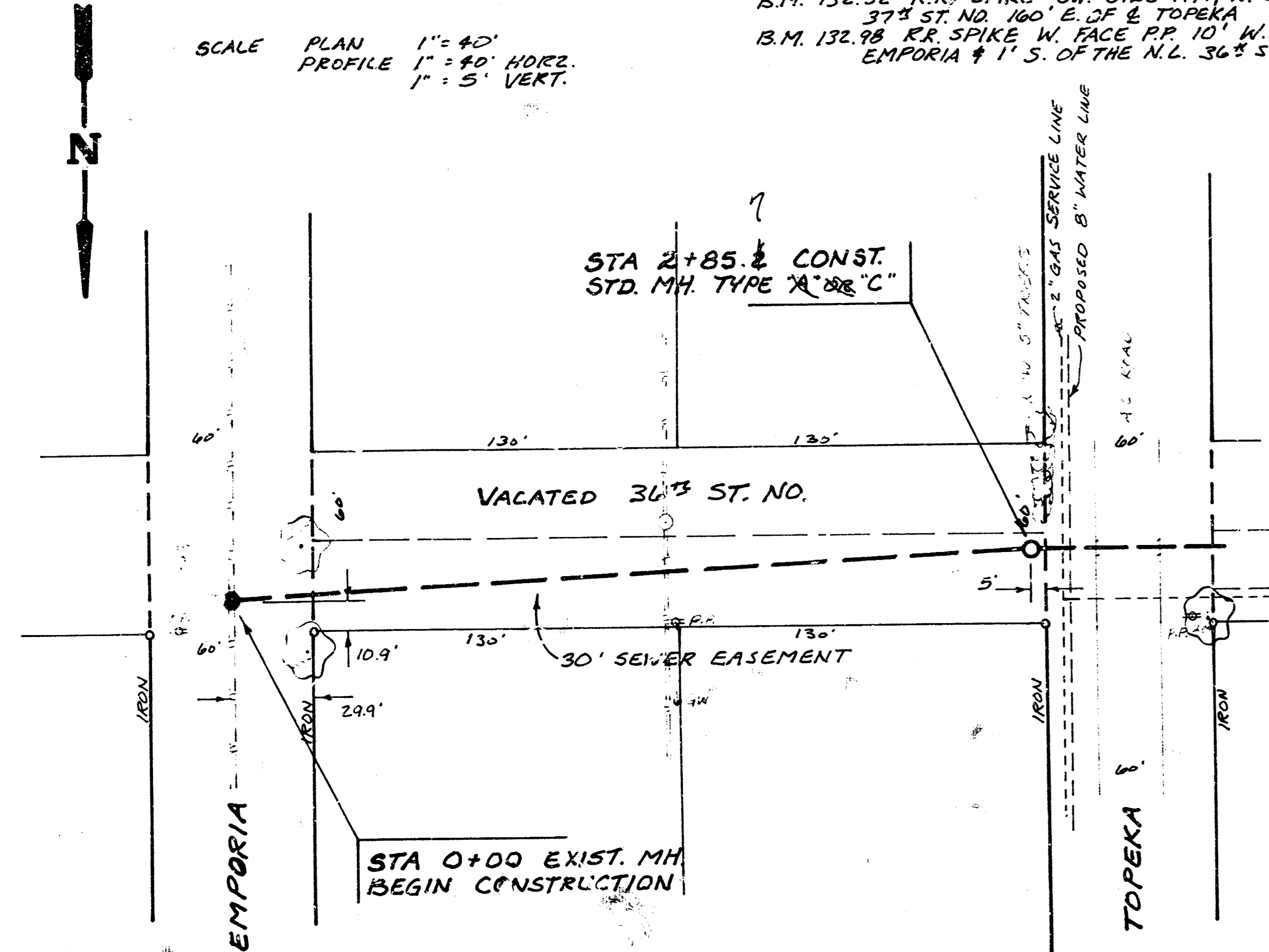
THE CONTRACTOR SHALL BE RESPONSIBLE FOR PRESERVING PROPERTY IRONS. THE CONTRACTOR SHALL BE REQUIRED TO RE-ESTABLISH ANY PROPERTY IRONS WHICH ARE DAMAGED OR DESTROYED BY HIS CONSTRUCTION OPERATIONS. SUCH IRONS SHALL BE RE-ESTABLISHED BY A LICENSED LAND SURVEYOR OR A LICENSED PROFESSIONAL ENGINEER IN ACCORDANCE WITH STATE LAWS.

SCALE PLAN 1" = 40'
PROFILE 1" = 10' HORIZ.
1" = 5' VERT.

B.M. 133.172 CITY STD. DISC. 36' W & 29' N. OF E. BROADWAY & 87' S. ST. NO.
B.M. 132.52 R.R. SPIKE SW. SIDE P.P. N. SIDE 37 1/2 ST. NO. 160' E. OF E. TOPEKA
B.M. 132.98 R.R. SPIKE W. FACE P.P. 10' W. OF W.L. EMPORIA & 1' S. OF THE N.L. 36 1/2 ST. NO.



LAWRENCE AVE.



NOTE: The Temporary Construction Easement on Lots 11, 13, 31, 33, 47 & 49 consists of all of each lot and can be used for Access & Egress.

As Built S.I.L. 3-84

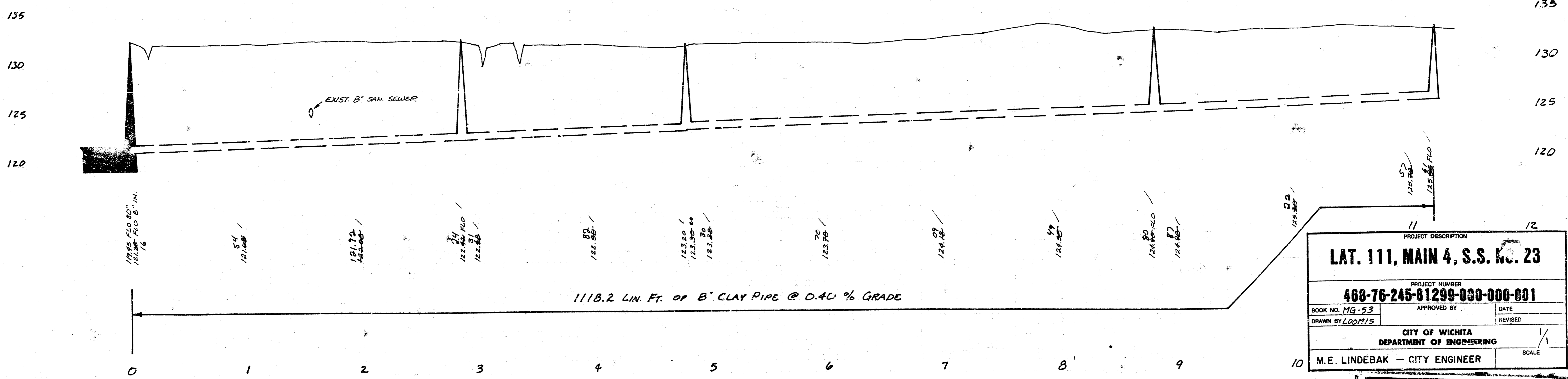
STA 0+00 EXIST. MH. BEGIN CONSTRUCTION

STA 2+85.2 CONST. STD. MH. TYPE "A" OR "C"

STA 4+24.2 CONST. STD. MH. TYPE "A" OR "C" INSTALL 6" STUB SW.

STA 8+79.2 CONST. STD. MH. TYPE "A" OR "C"

STA 11+18.2 CONST. STD. MH. TYPE "A" OR "C" INSTALL 6" STUB W.



PROJECT DESCRIPTION	
LAT. 111, MAIN 4, S.S. RC. 23	
PROJECT NUMBER	
468-76-245-81299-000-001	
BOOK NO. MG-53	APPROVED BY
DRAWN BY LDOM/15	DATE
CITY OF WICHITA	
DEPARTMENT OF ENGINEERING	
M.E. LINDEBAK - CITY ENGINEER	SCALE

FILMED FROM THE BEST AVAILABLE COPY...