

LATERAL 122, MAIN 4, SS #23

PROJ. NO. 468-82203

INDEX NO. 741124

CITY OF WICHITA, KANSAS

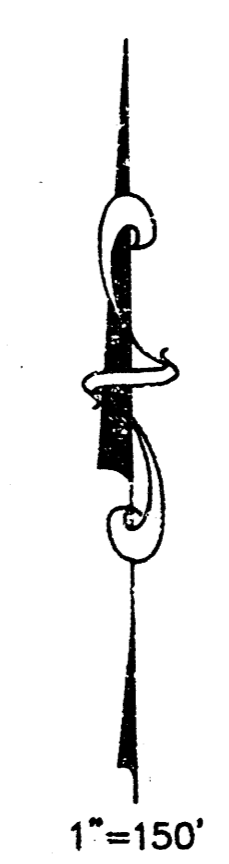
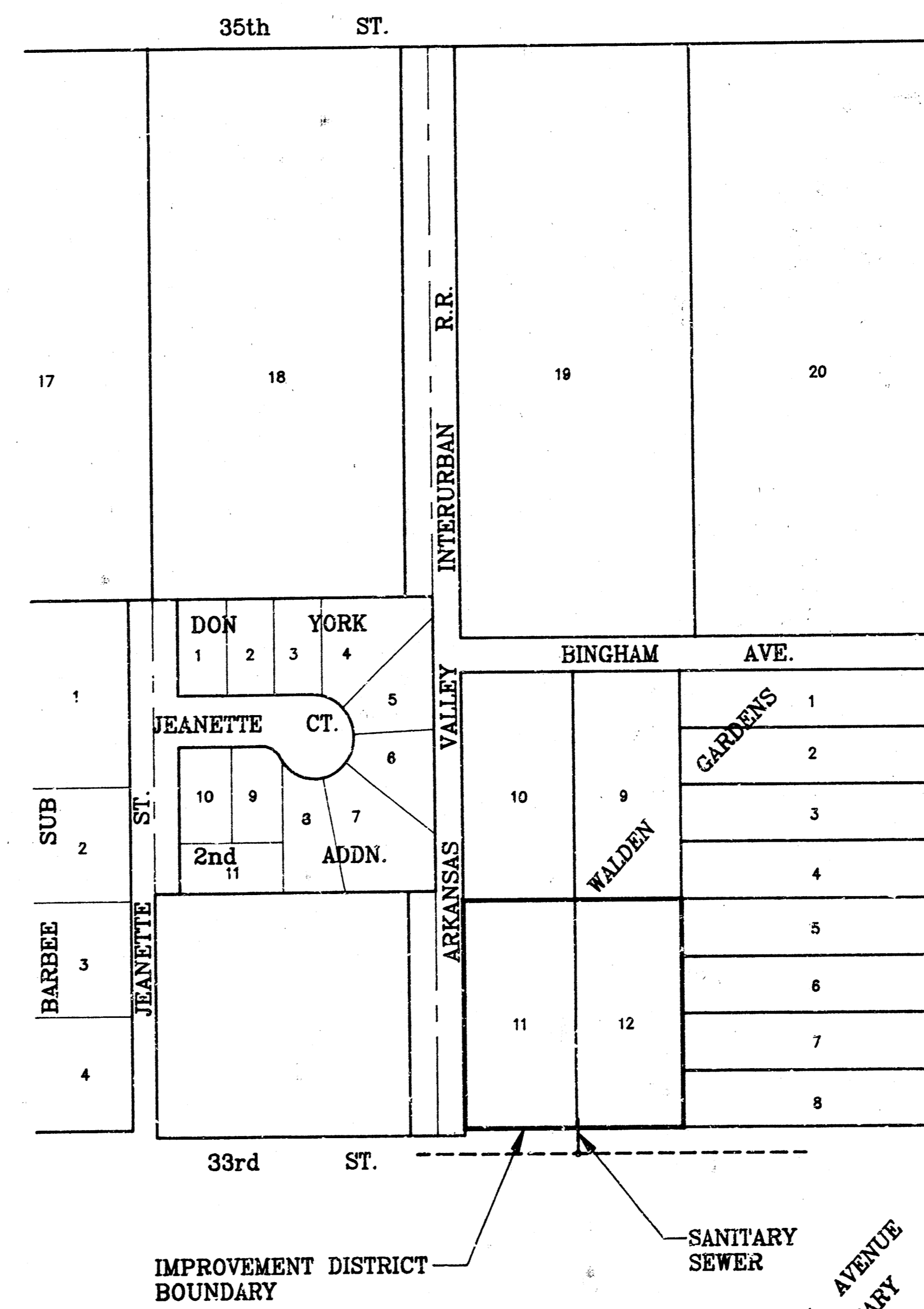
M. E. LINDEBAK - CITY ENGINEER

GENERAL NOTES:

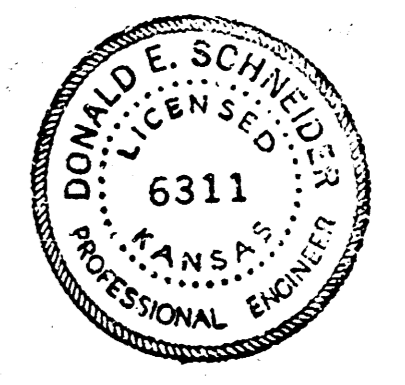
1. ALL CONSTRUCTION AND MATERIAL TO COMPLY WITH CITY OF WICHITA SPECIFICATIONS AND STANDARDS.
2. THE CONTRACTOR SHALL NOTIFY THE UTILITY SERVICE COMPANIES TO FLAG THEIR UNDERGROUND LINES AND REQUEST ANY OVERHEAD POLE/LINE ADJUSTMENTS 48 HOURS PRIOR TO CONSTRUCTION.
KANSAS ONE-CALL 1-800-344-7233
3. THE UNDERGROUND UTILITY SERVICE LINES AND OVERHEAD UTILITY POLE LINES ARE TO BE ADJUSTED AS NECESSARY BY OTHERS PRIOR TO CONSTRUCTION UNLESS THE PLANS SPECIFICALLY CALL FOR THEIR ADJUSTMENT BY THE CONTRACTOR. EXISTING UTILITIES AND THEIR LOCATION, AS SHOWN ON THE PLANS, REPRESENT THE BEST INFORMATION OBTAINABLE FOR DESIGN. LOCATION INFORMATION HAS BEEN OBTAINED FROM THE VARIOUS UTILITY COMPANIES AND IS EITHER FROM COMPANY RECORD DRAWINGS OR COMPANY PROVIDED FIELD LOCATIONS. THE CONTRACTOR WILL BE REQUIRED TO WORK AROUND EXISTING UTILITIES WITHIN THE RIGHT-OF-WAY WHICH DO NOT CONFLICT WITH PROPOSED CONSTRUCTION.
4. THE CONTRACTOR SHALL GIVE ALL PROPERTY OWNERS AND/OR TENANTS DIRECTLY AFFECTED BY THE CONSTRUCTION OF THIS PROJECT A MINIMUM OF FIVE (5) DAYS ADVANCE WRITTEN NOTICE PRIOR TO START OF CONSTRUCTION.
5. THE CONTRACTOR SHALL NOTIFY ARKANSAS AVENUE ELEMENTARY AT LEAST TWO (2) DAYS PRIOR TO ANY STREET CLOSURE APPROVED BY THE FIELD ENGINEER.
6. ANY TREE OR SHRUB REMOVAL MUST BE APPROVED BY THE FIELD ENGINEER.
7. THE CONTRACTOR MUST EXAMINE THE CONSTRUCTION SITE PRIOR TO BIDDING AND BE SATISFIED AS TO THE WORK SHOWN FOR COMPLETION.
8. STREET CLOSURE TO FACILITATE CONSTRUCTION OF THIS PROJECT SHALL NOT EXCEED 8 HOURS.

INDEX OF SHEETS

SHEET 1 - TITLE SHEET
SHEET 2 - PLAN/PROFILE



*Booked 2-9-94
As Per Plan*



B.M. CITY STANDARD DISC, 32' SOUTH
OF CENTERLINE 33RD EAST AND 22' EAST
OF CENTERLINE ARKANSAS
ELEV. 129.81

DRIVE TO REMAIN OPEN DURING
CONST.

STA. 0+00 EXIST. M.H. TYPE "A"
CONNECT TO EXIST 8"x15' STUB

UNDER GROUND TELEPHONE LOCATION
NOT VARIFIED, TO BE LOCATED THROUGH
KANSAS-ONE-CALL 48 HOURS BEFORE
CONSTRUCTION.

STA. 0+35.71 CONSTRUCT
8" CLEANOUT RISER ASSEMBLY

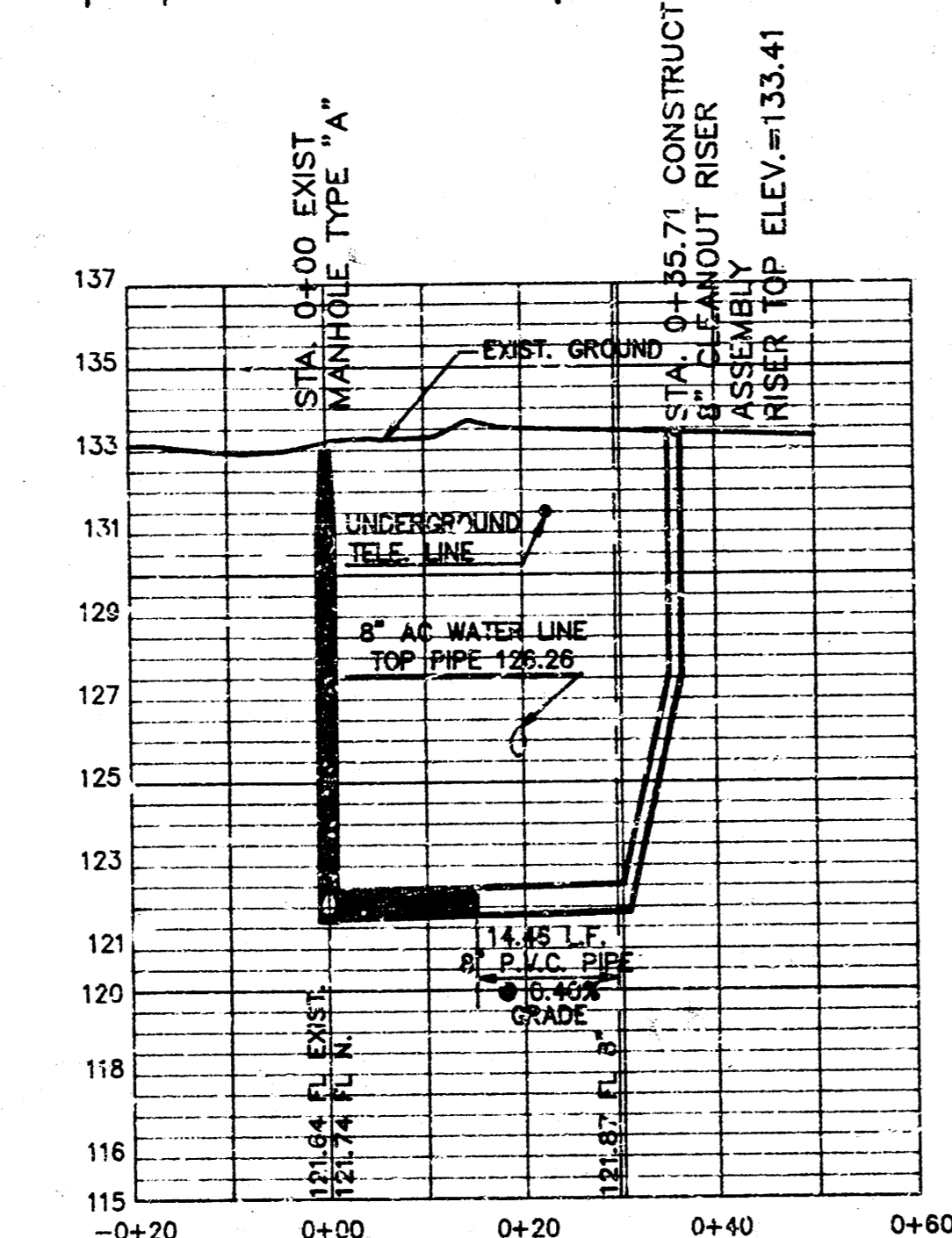
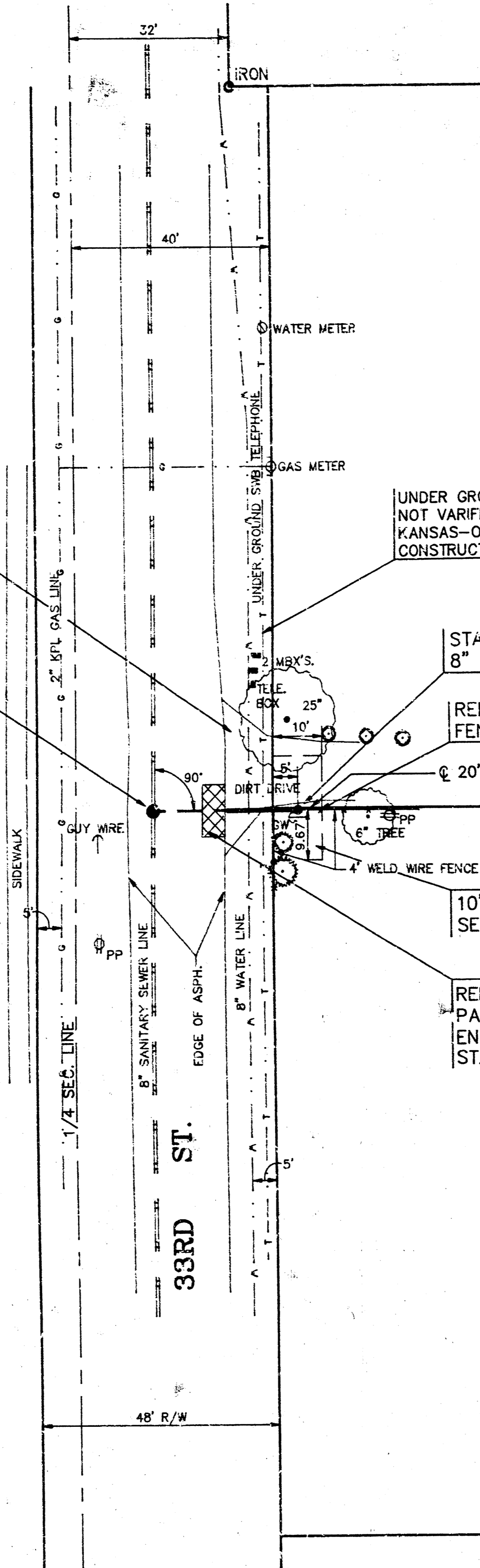
REMOVE & REPLACE
FENCE

20' UTIL. ESMT.

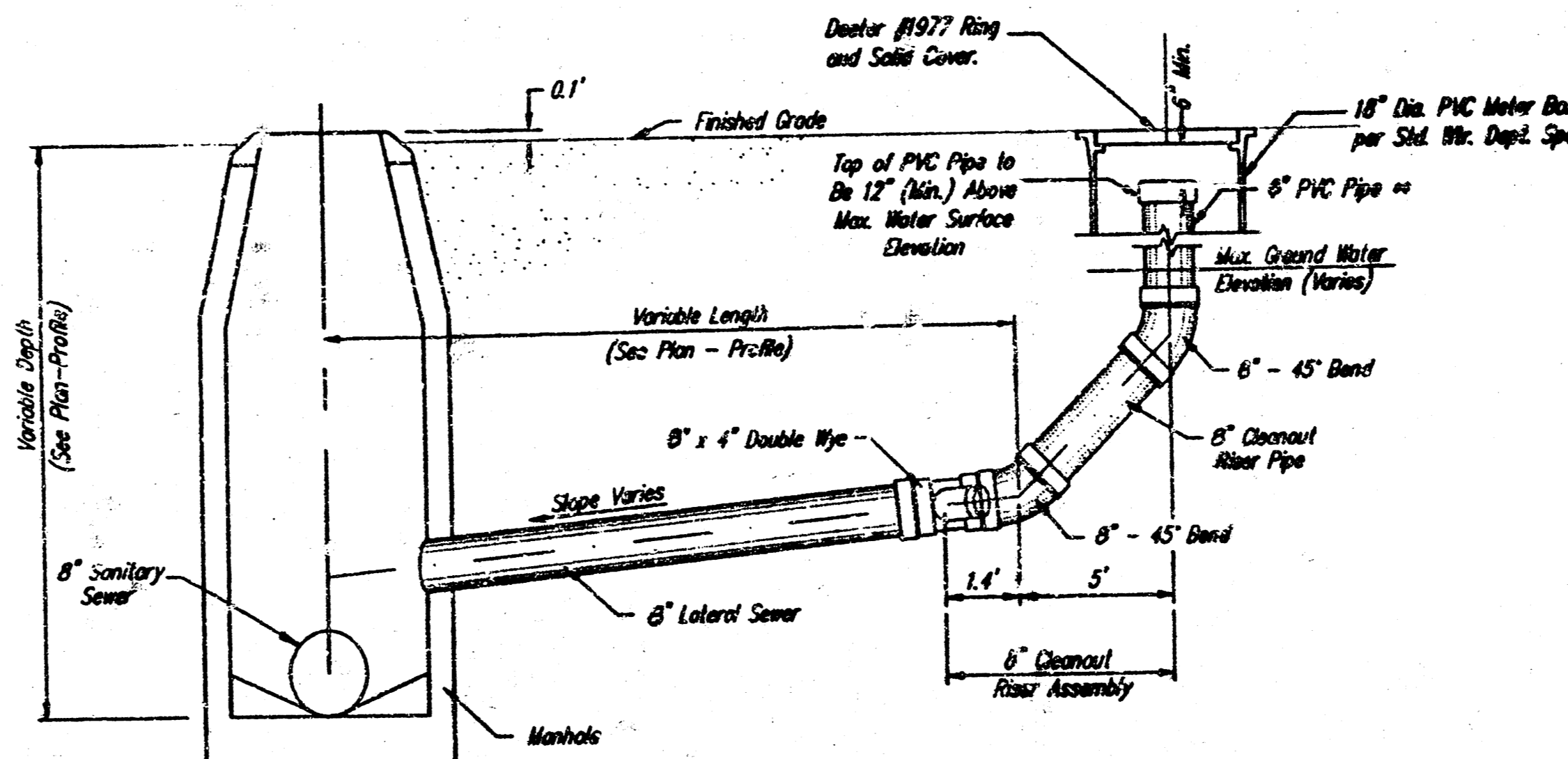
10'x20' UTIL. ESMT. BY
SEPERATE EASEMENT

REMOVE AND REPLACE ASPHALT
PAVEMENT AS APPROVED BY THE
ENGINEER AND IN ACCORDANCE WITH
STANDARD SPECIFICATIONS.

ARKANSAS AVENUE
ELEMENTARY



NOTE:
AN APPROVED COUPLING SHALL BE USED TO
CONNECT THE P.V.C. PIPE TO THE CLAY PIPE.
SUCH COUPLING SHALL BE OF THE TYPE AS
MANUFACTURED BY INDIANA SEAL OR AN
APPROVED EQUAL.



CLEANOUT RISER DETAIL

SCALE PLAN 1"=20'
PROFILE 1"=20' HGRIZ.
1"=5' VERT.

PROJ. NO. 468-82203
INDEX NO. 741124
DRAWN BY L. POWERS

SHEET 2 OF 2

14-04-01-05