

# LATERAL 139, MAIN 4, SANITARY SEWER # 23

PROJECT NO. 468-83061

OCA NO. 743826

CITY OF WICHITA, KANSAS  
M. E. LINDEBAK P.E. - CITY ENGINEER

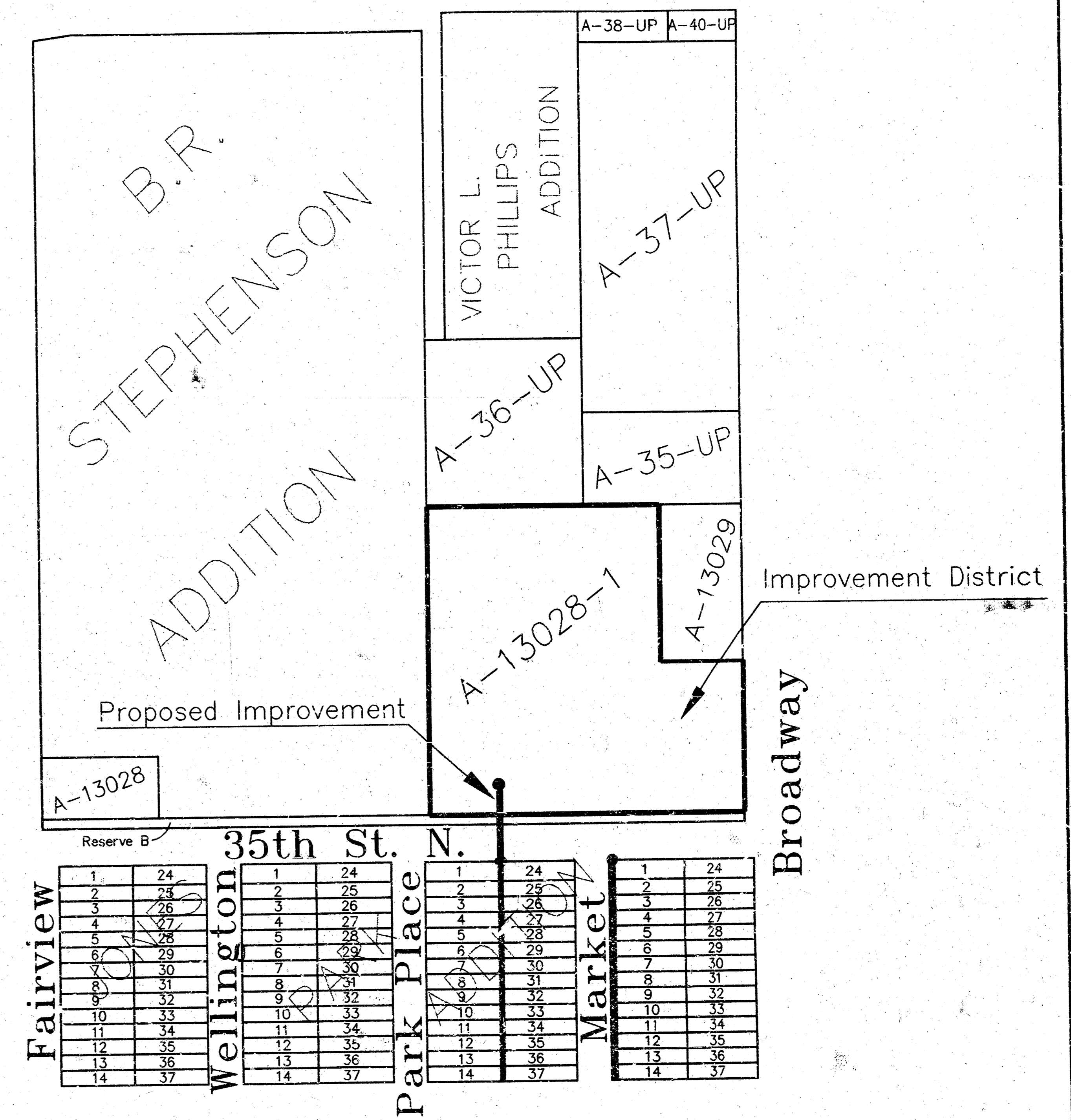
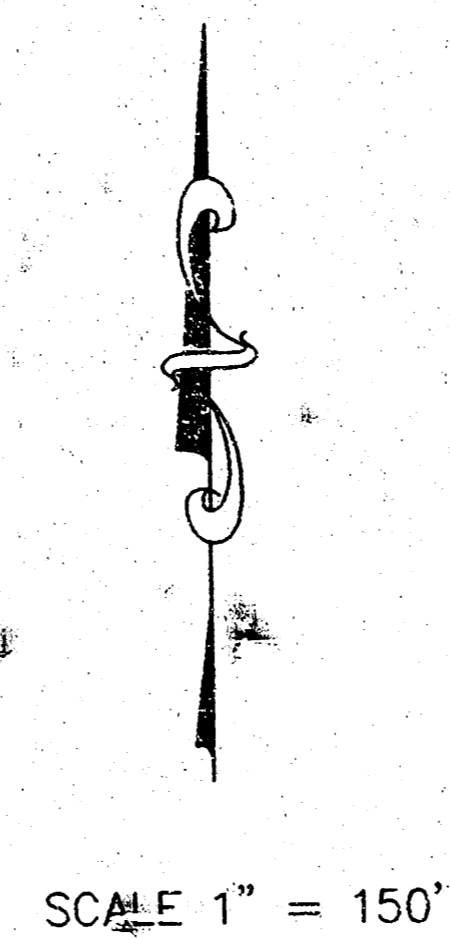
JULY 2000

GENERAL NOTES:

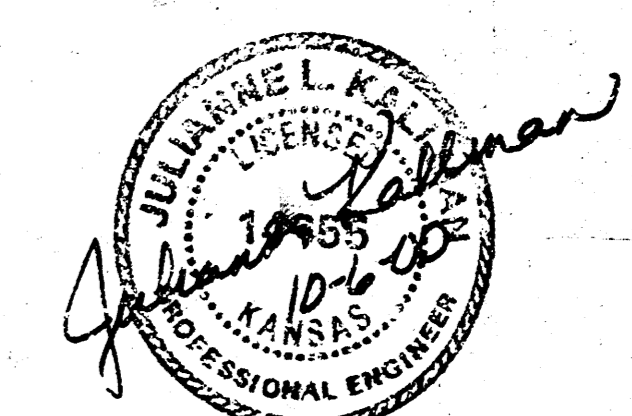
1. ALL CONSTRUCTION AND MATERIAL TO COMPLY WITH CITY OF WICHITA SPECIFICATIONS AND STANDARDS.
2. THE CONTRACTOR SHALL NOTIFY THE UTILITY SERVICE COMPANIES TO FLAG THEIR UNDERGROUND LINES AND REQUEST ANY OVERHEAD POLE/LINE ADJUSTMENTS 48 HOURS PRIOR TO CONSTRUCTION.  
KANSAS ONE-CALL 1-800-344-7233
3. THE UNDERGROUND UTILITY SERVICE LINES AND OVERHEAD UTILITY POLE LINES ARE TO BE ADJUSTED AS NECESSARY BY OTHERS PRIOR TO CONSTRUCTION UNLESS THE PLANS SPECIFICALLY CALL FOR THEIR ADJUSTMENT BY THE CONTRACTOR. EXISTING UTILITIES AND THEIR LOCATION, AS SHOWN ON THE PLANS, REPRESENT THE BEST INFORMATION OBTAINABLE FOR DESIGN. LOCATION INFORMATION HAS BEEN OBTAINED FROM THE VARIOUS UTILITY COMPANIES AND IS EITHER FROM COMPANY RECORD DRAWINGS OR COMPANY PROVIDED FIELD LOCATIONS. THE CONTRACTOR WILL BE REQUIRED TO WORK AROUND EXISTING UTILITIES WITHIN THE RIGHT-OF-WAY WHICH DO NOT CONFLICT WITH PROPOSED CONSTRUCTION.
4. THE CONTRACTOR SHALL GIVE ALL PROPERTY OWNERS AND/OR TENANTS DIRECTLY AFFECTED BY THE CONSTRUCTION OF THIS PROJECT A MINIMUM OF FIVE (5) DAYS ADVANCE WRITTEN NOTICE PRIOR TO START OF CONSTRUCTION.
5. ANY TREE OR SHRUB REMOVAL MUST BE APPROVED BY THE FIELD ENGINEER.
6. THE CONTRACTOR SHOULD EXAMINE THE CONSTRUCTION SITE PRIOR TO BIDDING AND BE SATISFIED AS TO THE WORK SHOWN FOR COMPLETION.
7. ANY FENCE REMOVED DURING CONSTRUCTION MUST BE REPLACED AND RESTORED TO ORIGINAL CONDITION.
8. UTILITY EASEMENT AND FENCE RESTORATION SHALL BE SUSPENDED FOR THREE WEEKS FROM THE DATE THE SEWER IS TESTED AND ACCEPTED BY THE ENGINEERING DIVISION, DEPARTMENT OF PUBLIC WORKS, TO ALLOW PROPERTY OWNERS TIME TO INSTALL HOOKUPS TO THE SEWER MAIN. CONTRACTORS SHALL NOTIFY PROPERTY OWNERS, IN WRITING, OF THIS AGREEMENT.

INDEX OF SHEETS

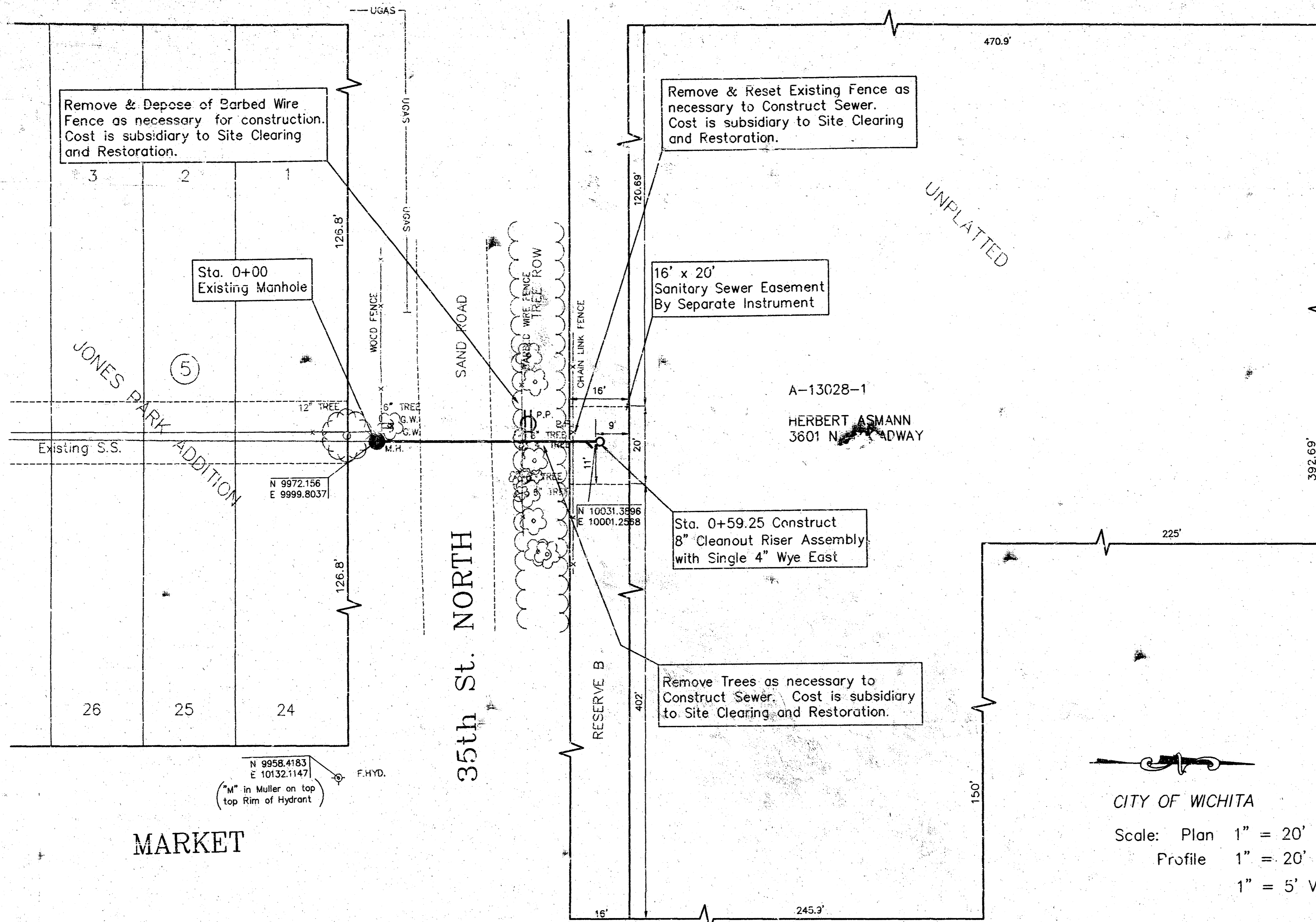
SHEET 1 - TITLE SHEET  
SHEET 2 - PLAN/PROFILE



Booked  
1-10-01  
P-163  
R. D. L.  
Per Plan

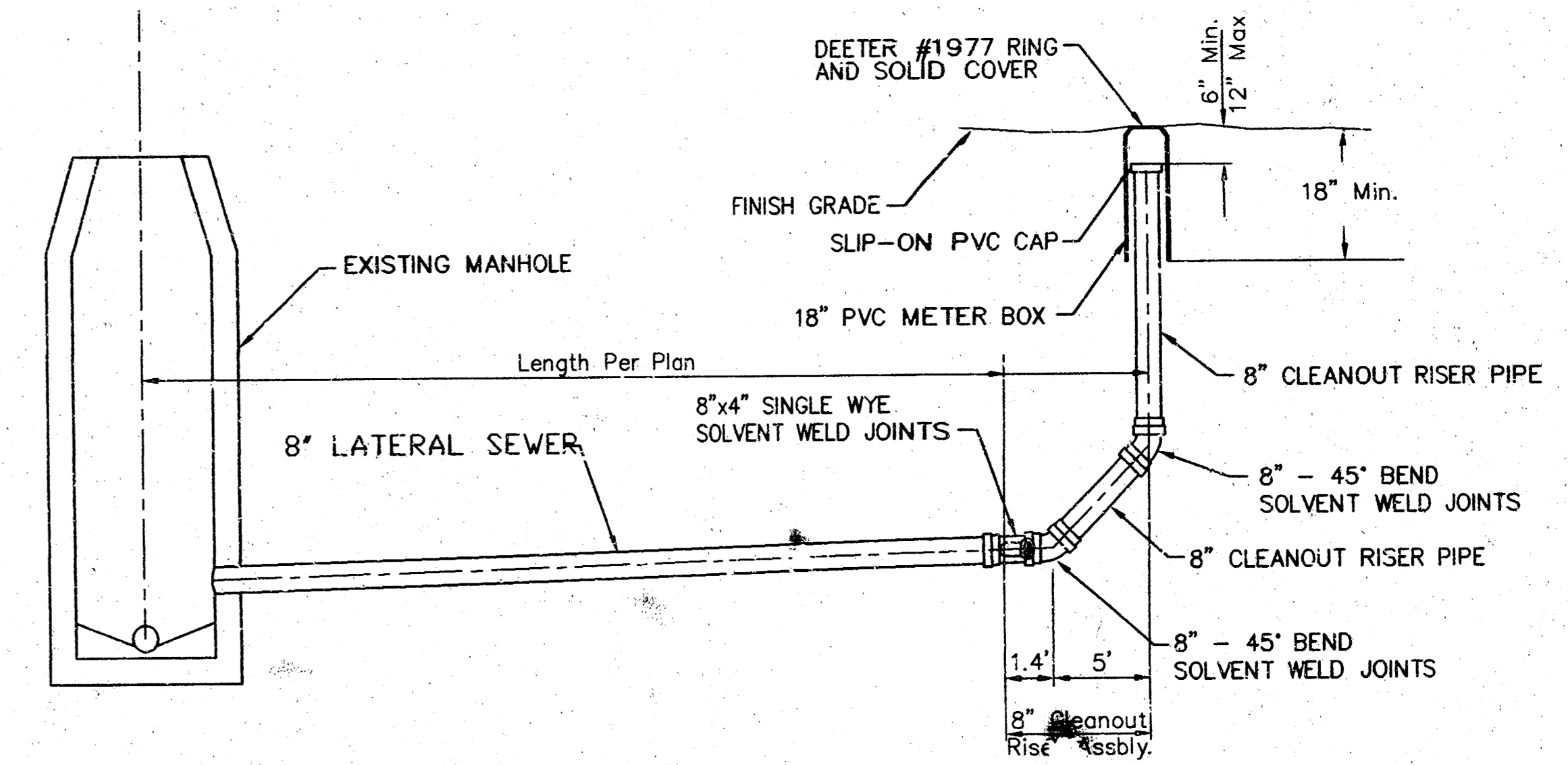


PARK PLACE



COW Bench Mark:  
 Broadway & 37th St. North  
 36' West of Center Line  
 29' North of Center Line  
 Elev. 135.17

B.M. - S.W. Corner of 35th N. & Market  
 "M" in Muller on Top  
 Rim of Fire Hydrant  
 Elev. 133.495

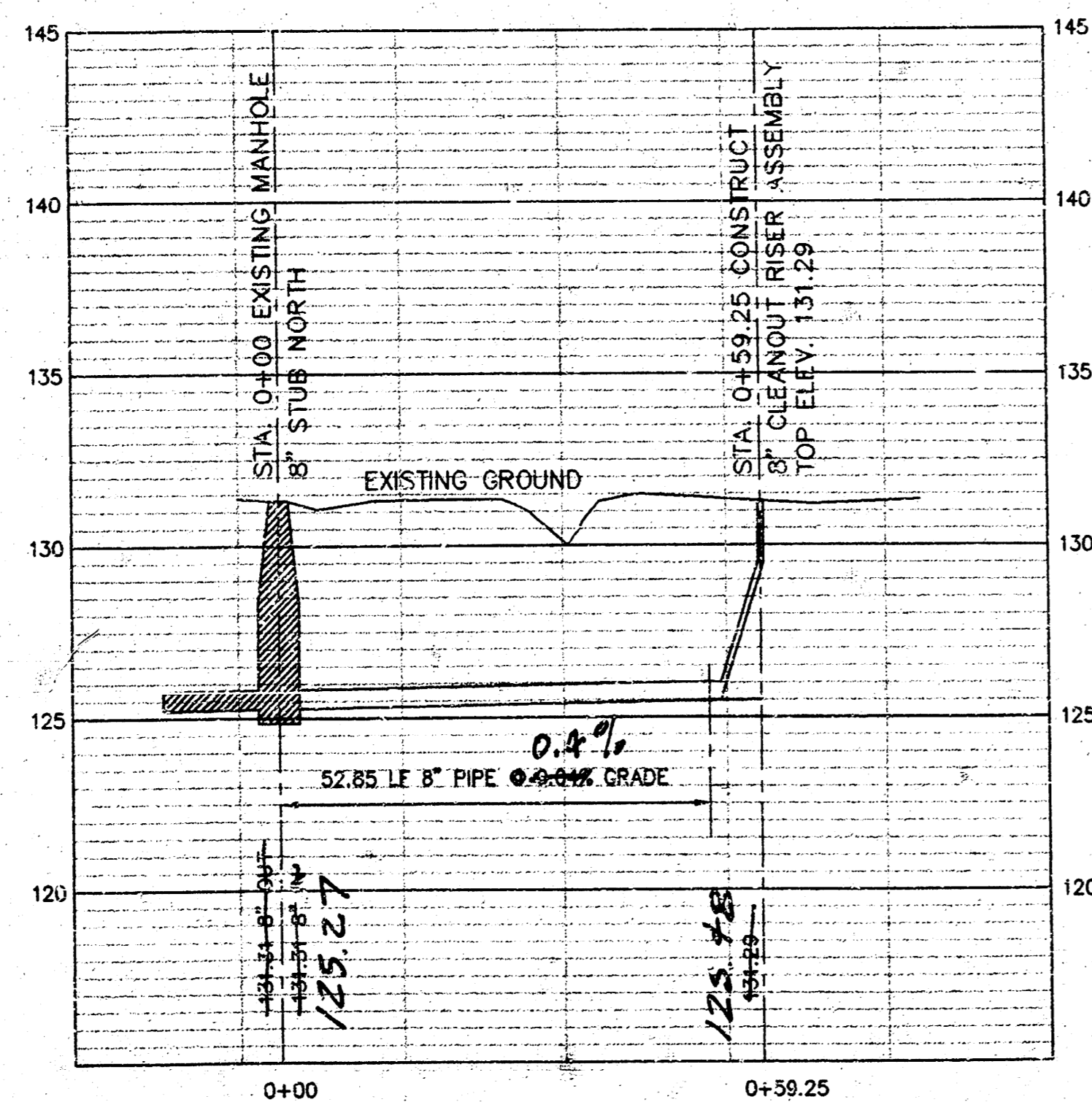


8" CLEANOUT RISER ASSEMBLY DETAIL

CITY OF WICHITA  
 Scale: Plan 1" = 20'  
 Profile 1" = 20' Horiz.  
 1" = 5' Vert.

MARKET

BROADWAY



<p>THE CITY OF WICHITA                  CITY ENGINEER'S OFFICE                  CITY PL. - SEVENTH FLOOR                  402 W. 10TH ST. - 2ND FLOOR                  WICHITA, KANSAS 67202                  (316) 268-4200                  (316) 268-4114 FAX</p>	<p><b>LATERAL 139, MAIN 4                  SANITARY SEWER # 22</b></p>	
	<p>M. E. LINDEBAK P.E. - CITY ENGINEER</p>	
	<p>PROJECT NUMBER                  468-83061</p>	<p>INDEX CODE                  743826</p>
	<p>DATE                  JULY 2000</p>	<p>SHEET 2 OF 2</p>

18-03-01-10