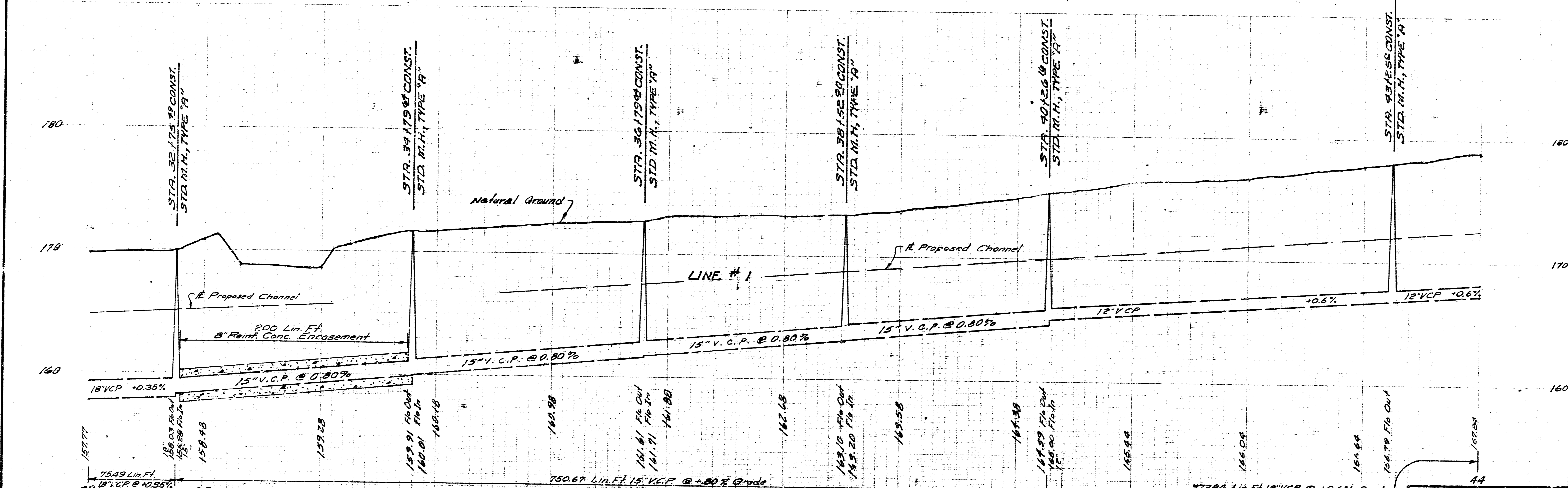
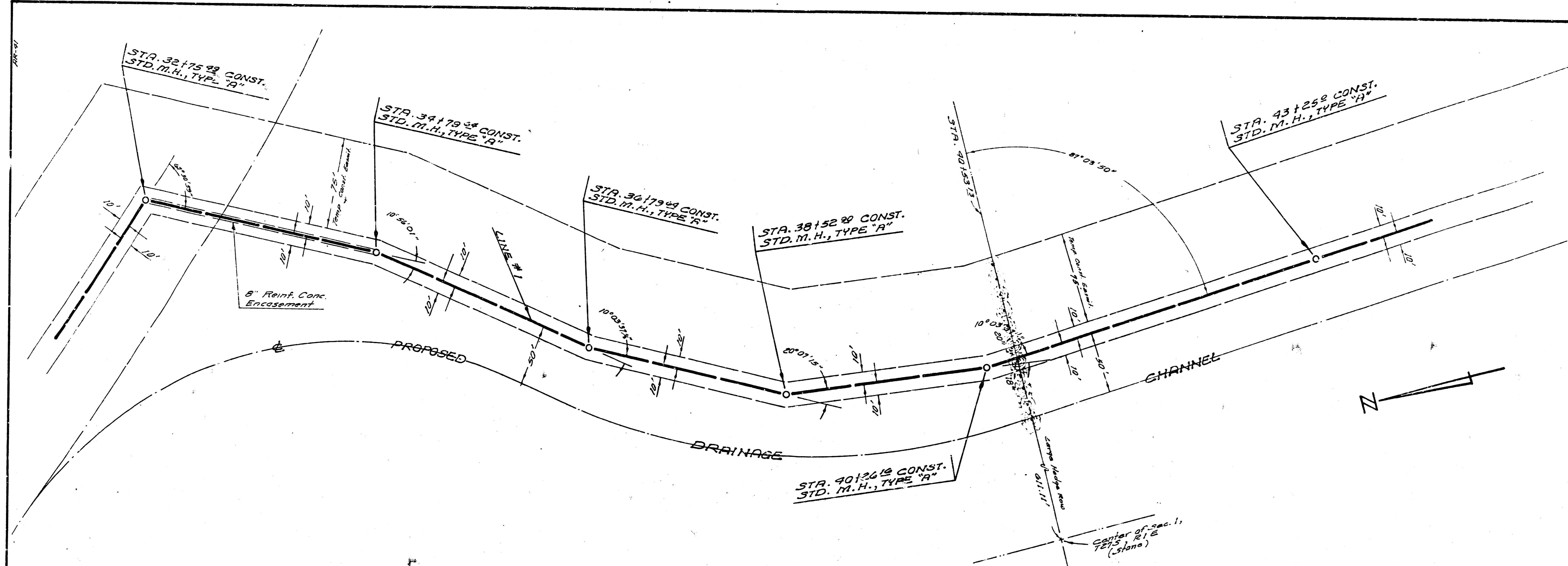
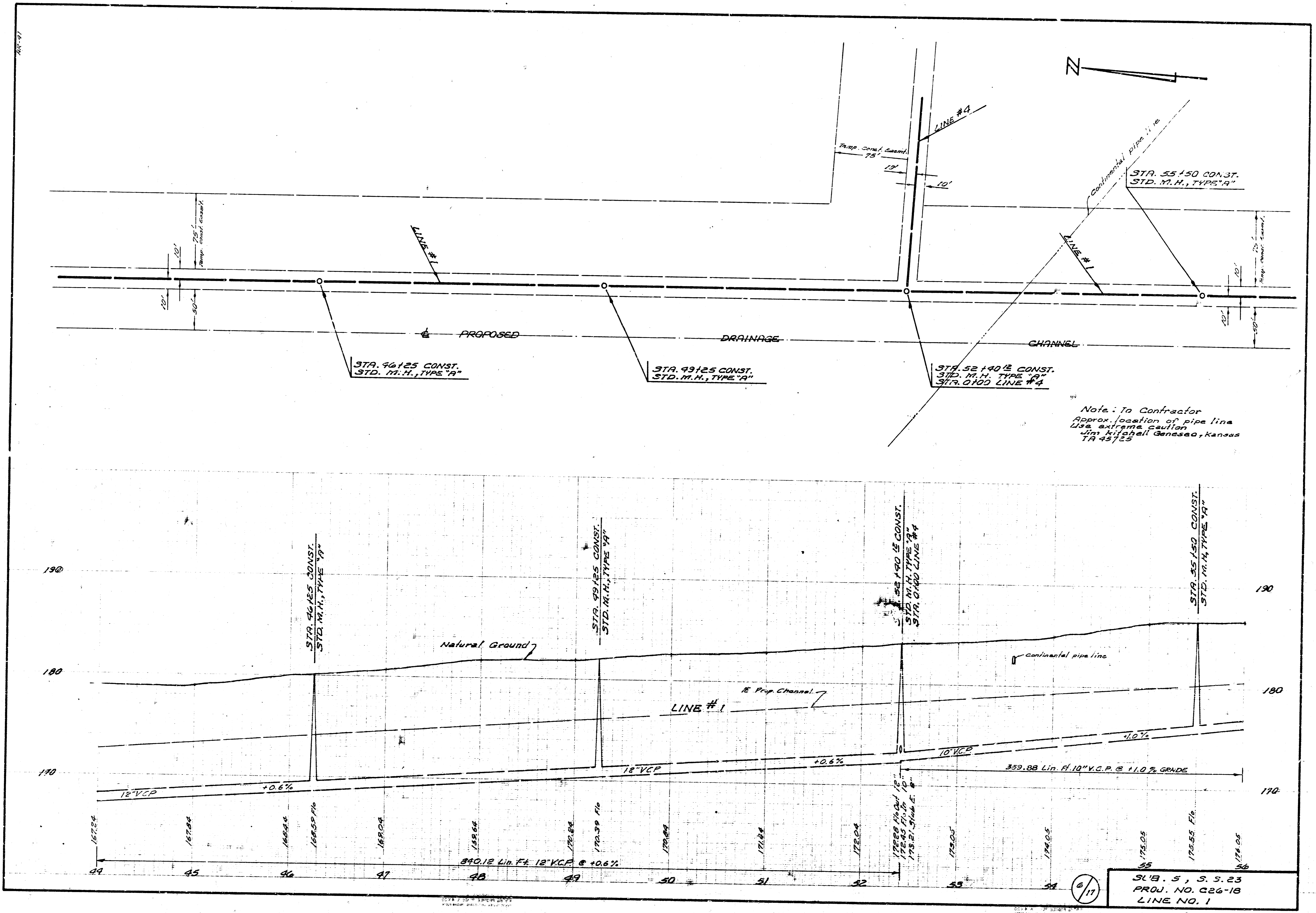


SUB. 5, S.S. 23
 PROJ. NO. C26-18
 LINE NO. 1

9/17



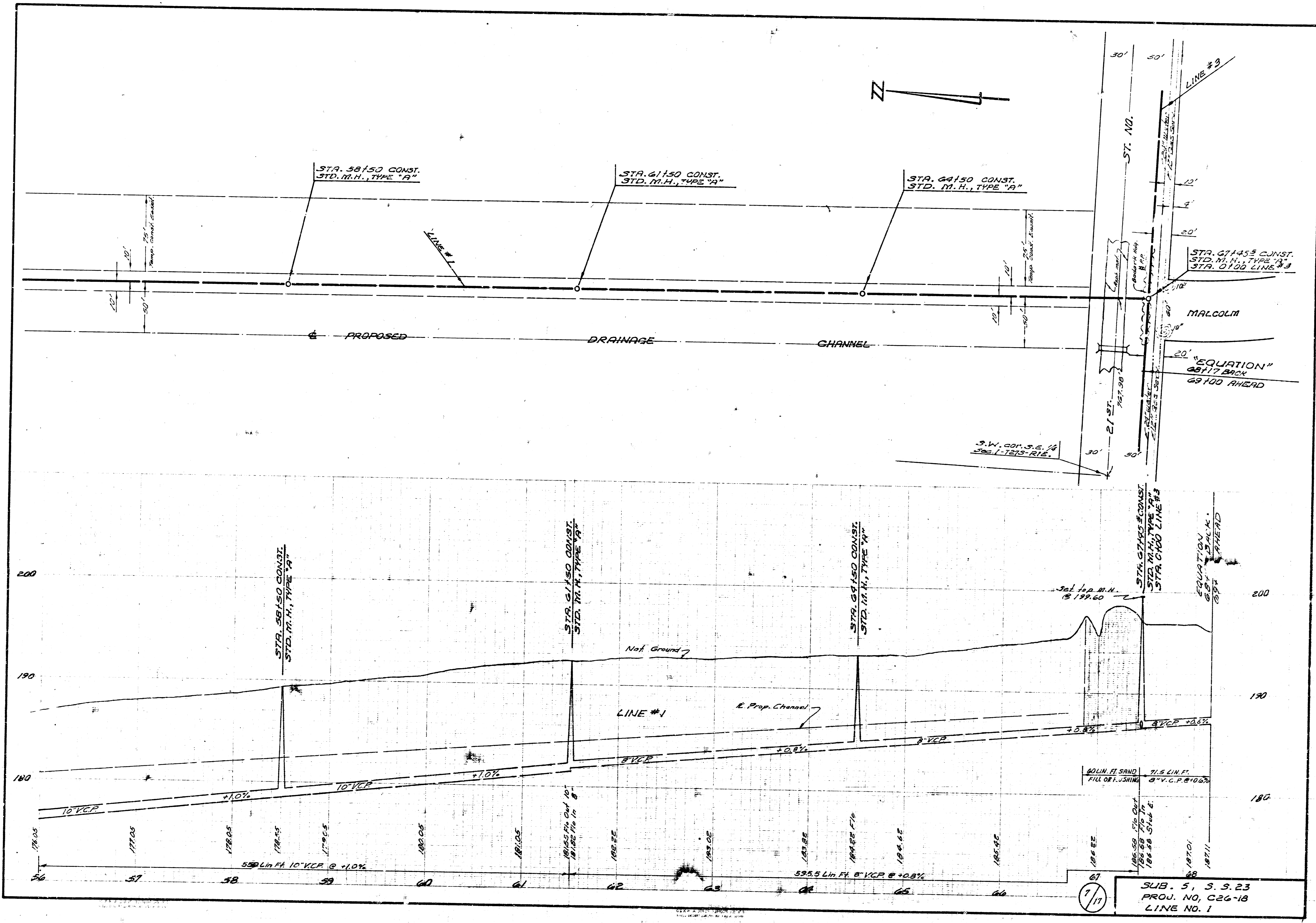
SUB 5, S.S. 23
 PROJ. NO. C26-18
 LINE NO. 1



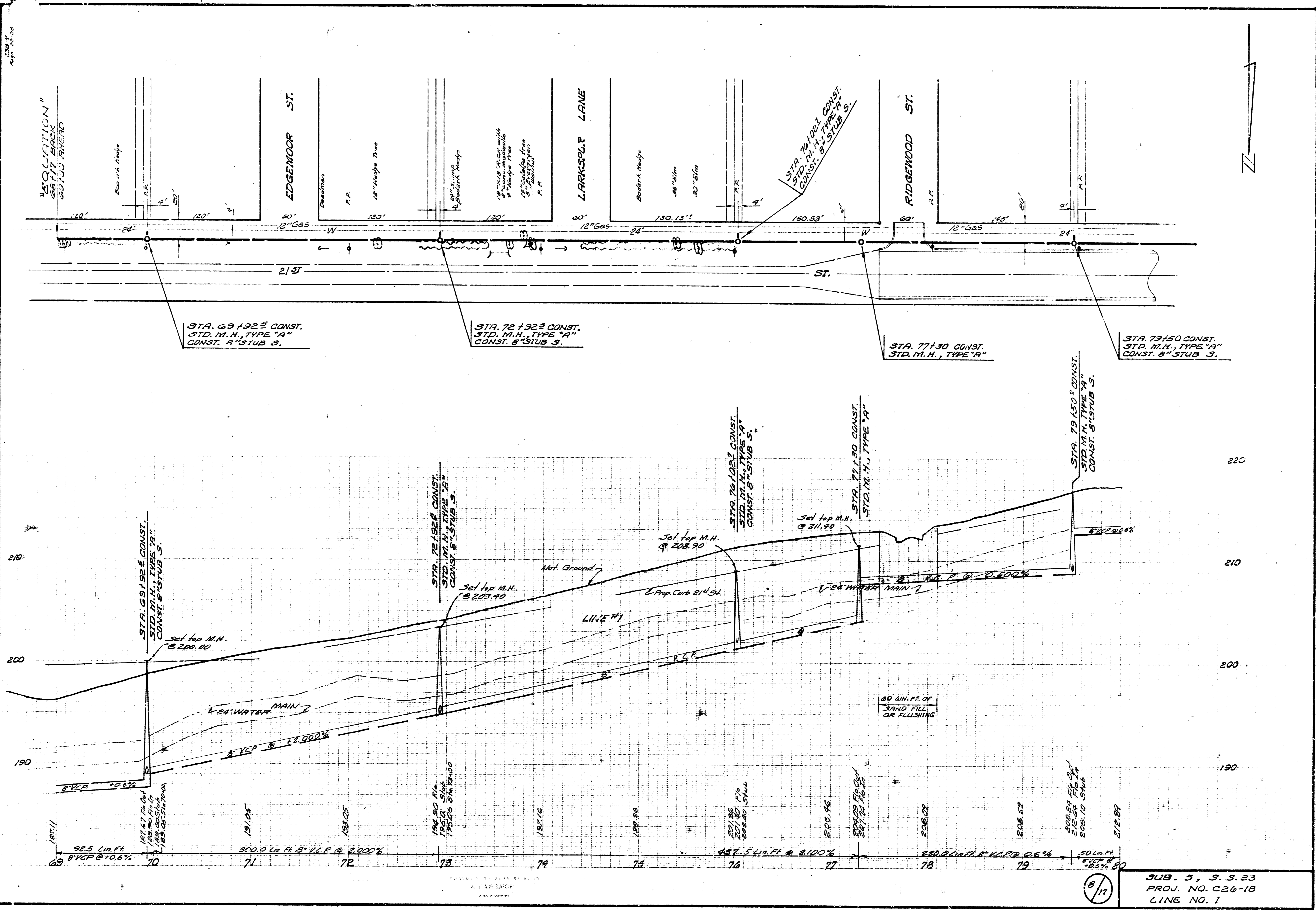
Note: To Contractor
 Approx. location of pipe line
 Use extreme caution
 Use Kitchell Genesis, Kansas
 TA 45725

SL 18.5, S. S. 23
 PROJ. NO. C26-1B
 LINE NO. 1

6/17

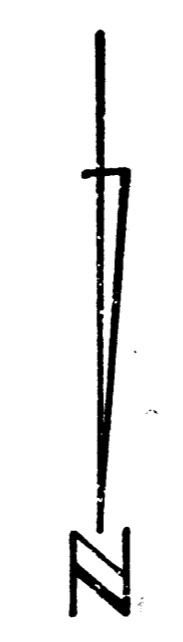
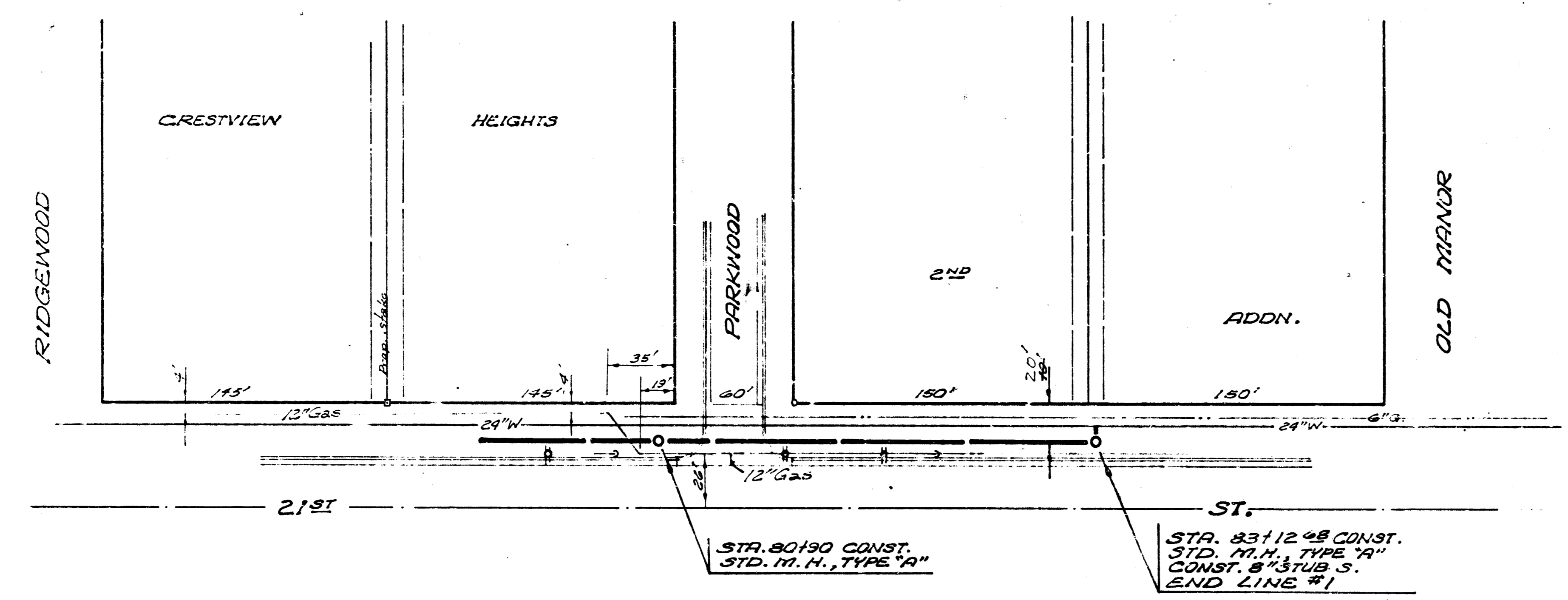


SUB. 5, S. S. 23
 PROJ. NO. C26-18
 LINE NO. 1



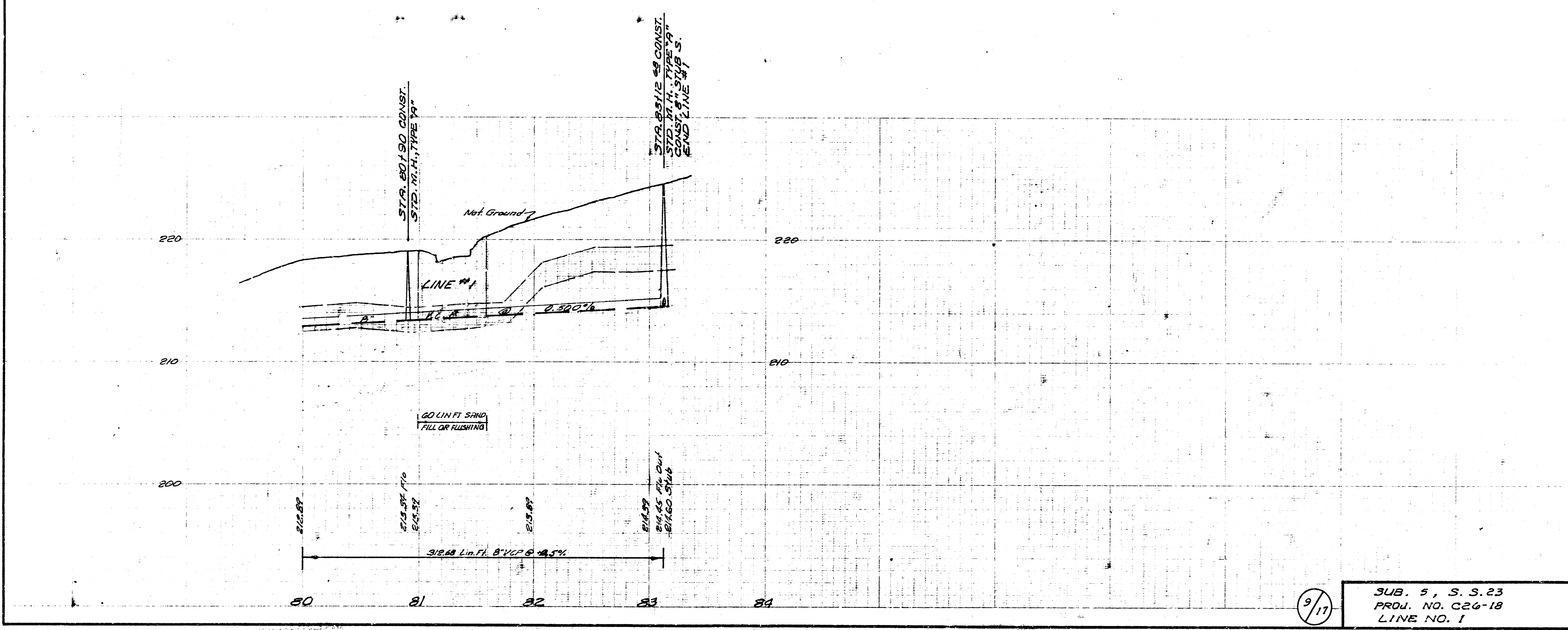
8/11
 SUB. 5, S. S. 23
 PROJ. NO. C26-18
 LINE NO. 1

AK-53



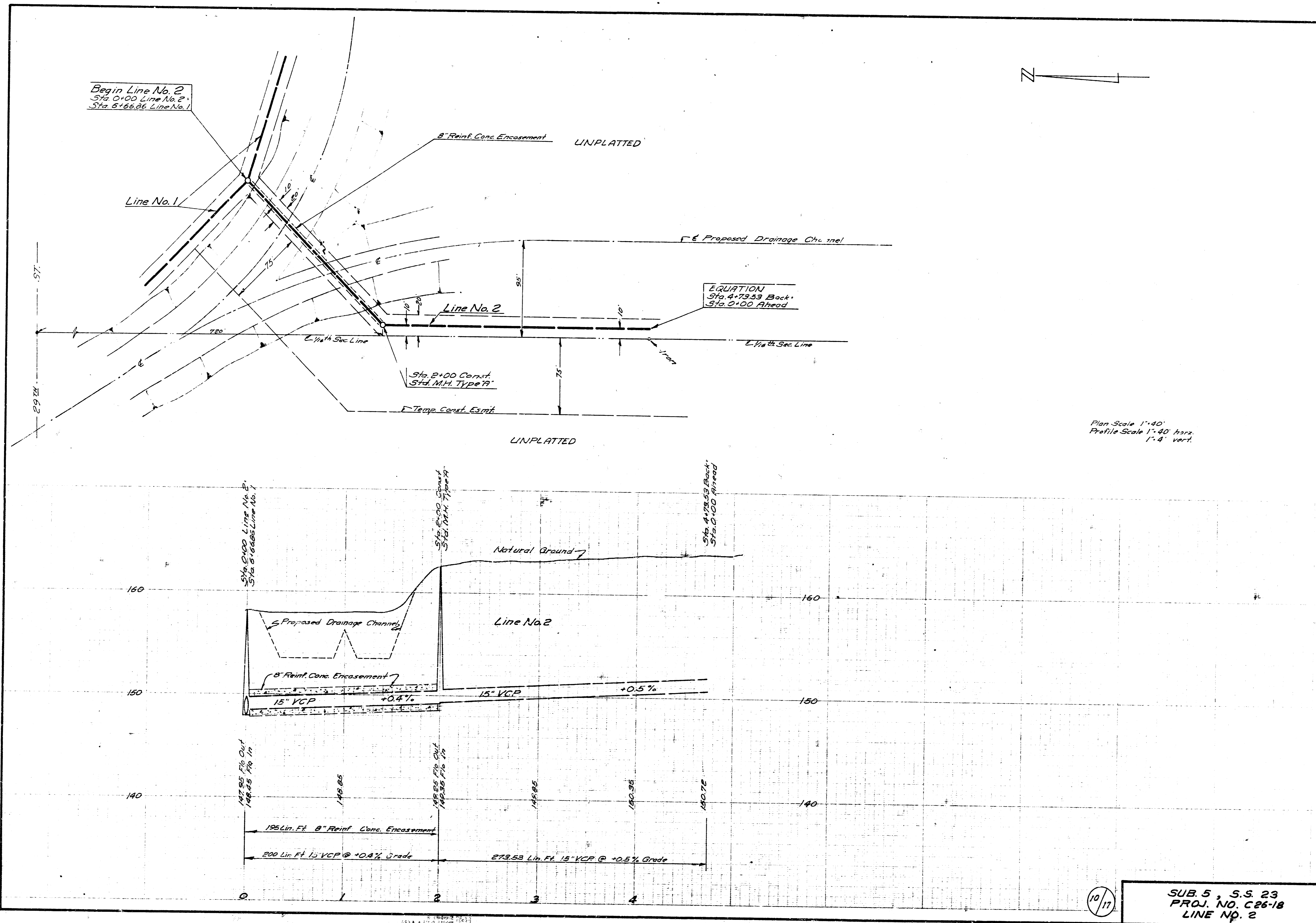
GENERAL NOTES :

- #1 Replace all fences.
- #2 Replace asphalt mat with 2" asphalt conc.
- #3 On asphaltic conc. streets, use power saw to trim asphalt 1' back from each edge of ditch cut before replacing asphaltic conc.
- #4 All sawing to be incidental to bid item pavement removed & replaced.



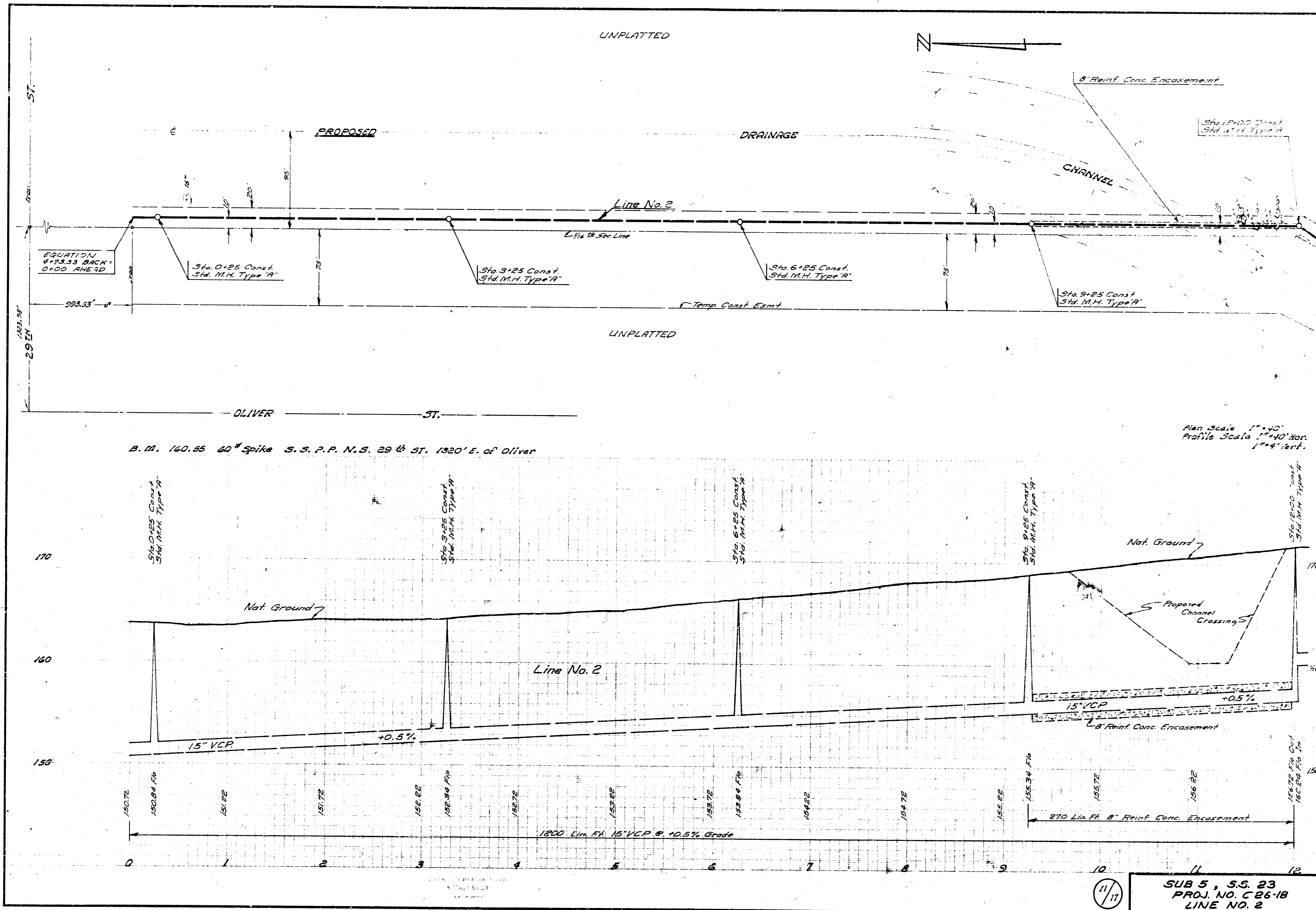
9/17

SUB. 5, S. S. 23
PROJ. NO. C26-18
LINE NO. 1



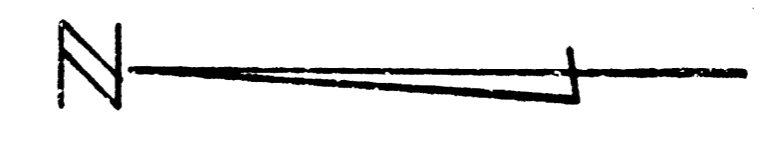
10/17

SUB 5, S.S. 23
 PROJ. NO. C26-18
 LINE NO. 2



ST.
29 IN

UNPLATTED



PROPOSED

DRAINAGE

CHANNEL

Line No. 2

L-1/4 18.50c Line

Temp Const. Exmt

UNPLATTED

OLIVER ST.

B. M. 160.85 60" Spike S.S.P.P.N.S. 29th ST. 1320' E. of Oliver

Plan Scale 1"=40'
Profile Scale 1"=40' vert.
1"=4' hor.

170

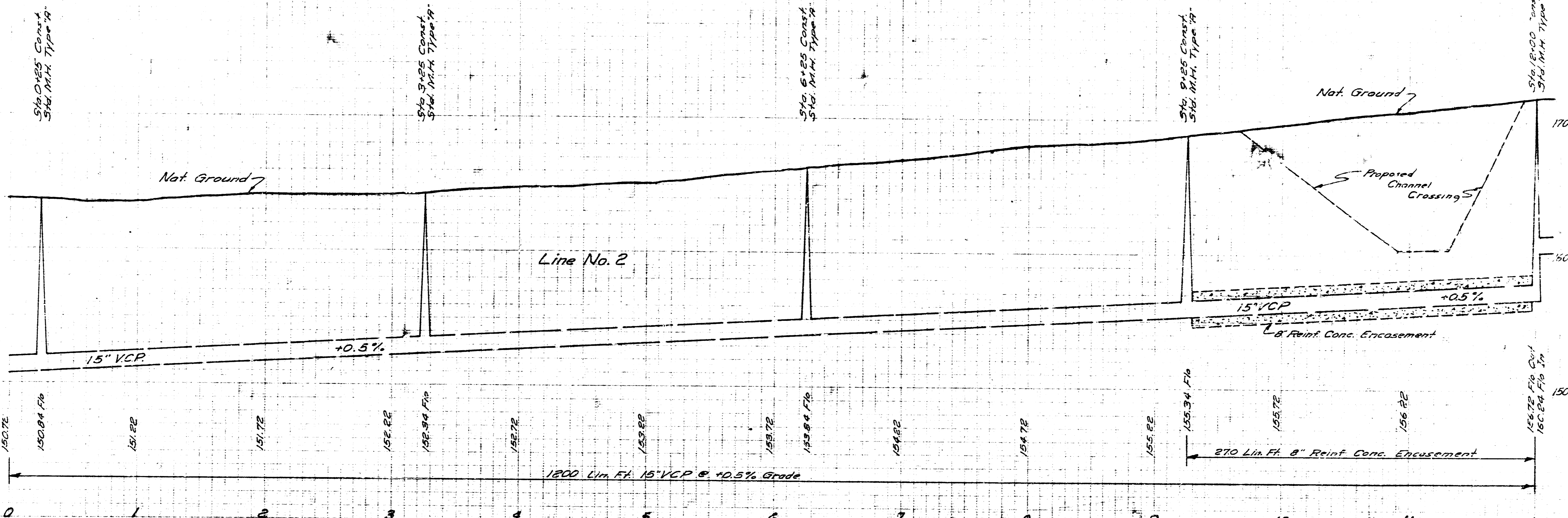
160

150

170

160

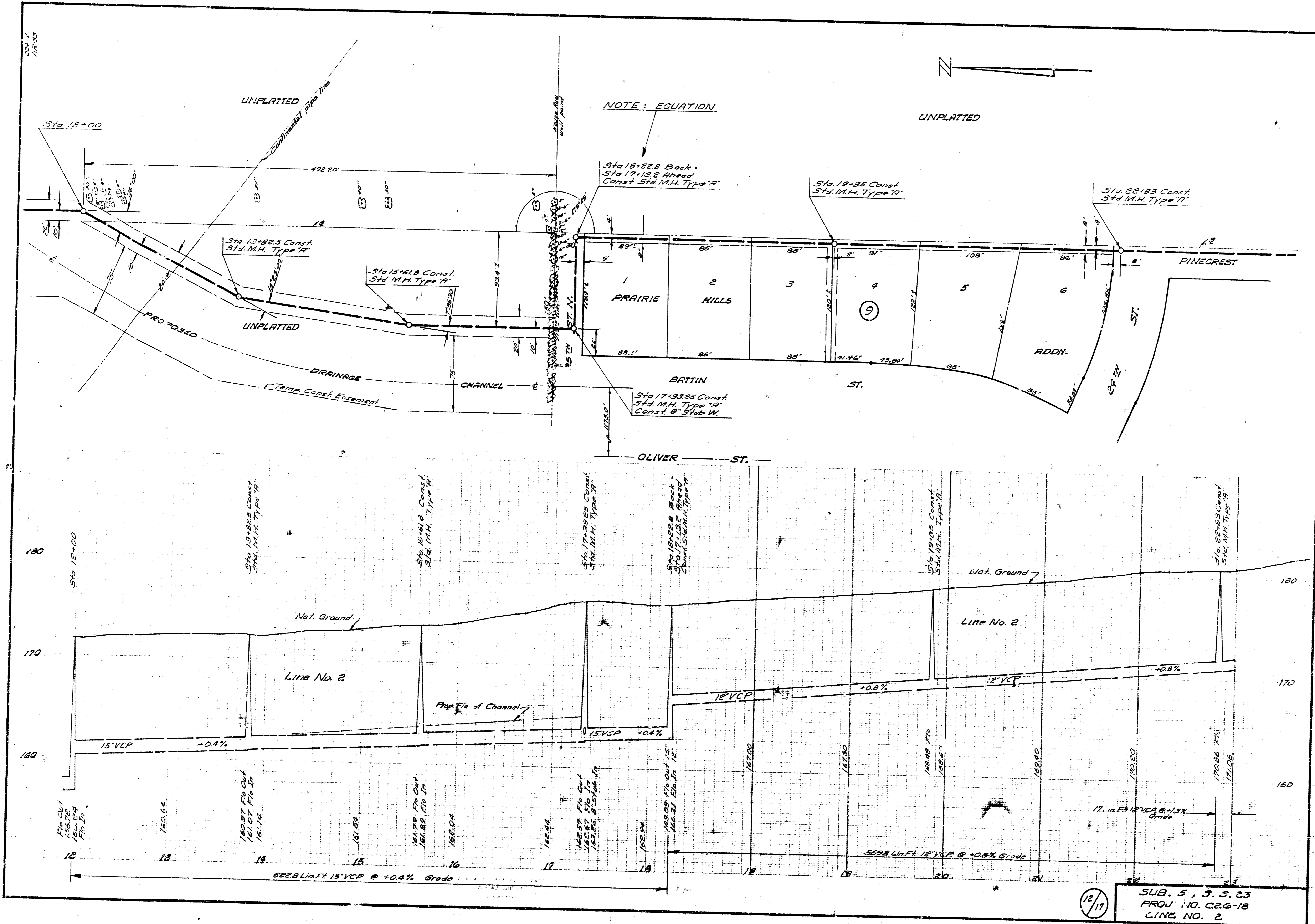
150



1200 Lin. Ft. 15" VCP @ +0.5% Grade
270 Lin. Ft. 8" Reinf. Conc. Encasement

11/17

SUB 5, S.S. 23
PROJ. NO. C26-18
LINE NO. 2



NOTE: EQUATION

UNPLATTED

Sta. 12+00

UNPLATTED

Sta. 18+228 Back
Sta. 17+132 Ahead
Const. Std. M.H. Type "A"

Sta. 19+85 Const.
Std. M.H. Type "A"

Sta. 22+83 Const.
Std. M.H. Type "A"

Sta. 15+82.5 Const.
Std. M.H. Type "A"

Sta. 15+61.8 Const.
Std. M.H. Type "A"

Sta. 17+132.5 Const.
Std. M.H. Type "A"
Const. 6" Sub W.

Sta. 15+82.5 Const.
Std. M.H. Type "A"

Sta. 15+61.8 Const.
Std. M.H. Type "A"

Sta. 17+132.5 Const.
Std. M.H. Type "A"

Sta. 18+228 Back
Sta. 17+132 Ahead
Const. Std. M.H. Type "A"

Sta. 19+85 Const.
Std. M.H. Type "A"

Sta. 22+83 Const.
Std. M.H. Type "A"

180

170

160

180

170

160

156.70
156.70
156.70
156.70

160.64

160.97
161.07
161.15

161.77
161.88
161.95

162.44

162.57
162.67
162.75

162.84

162.90

162.90

162.90

162.90

162.90

162.90

162.90

12

13

14

15

16

17

18

19

20

21

22

23

24

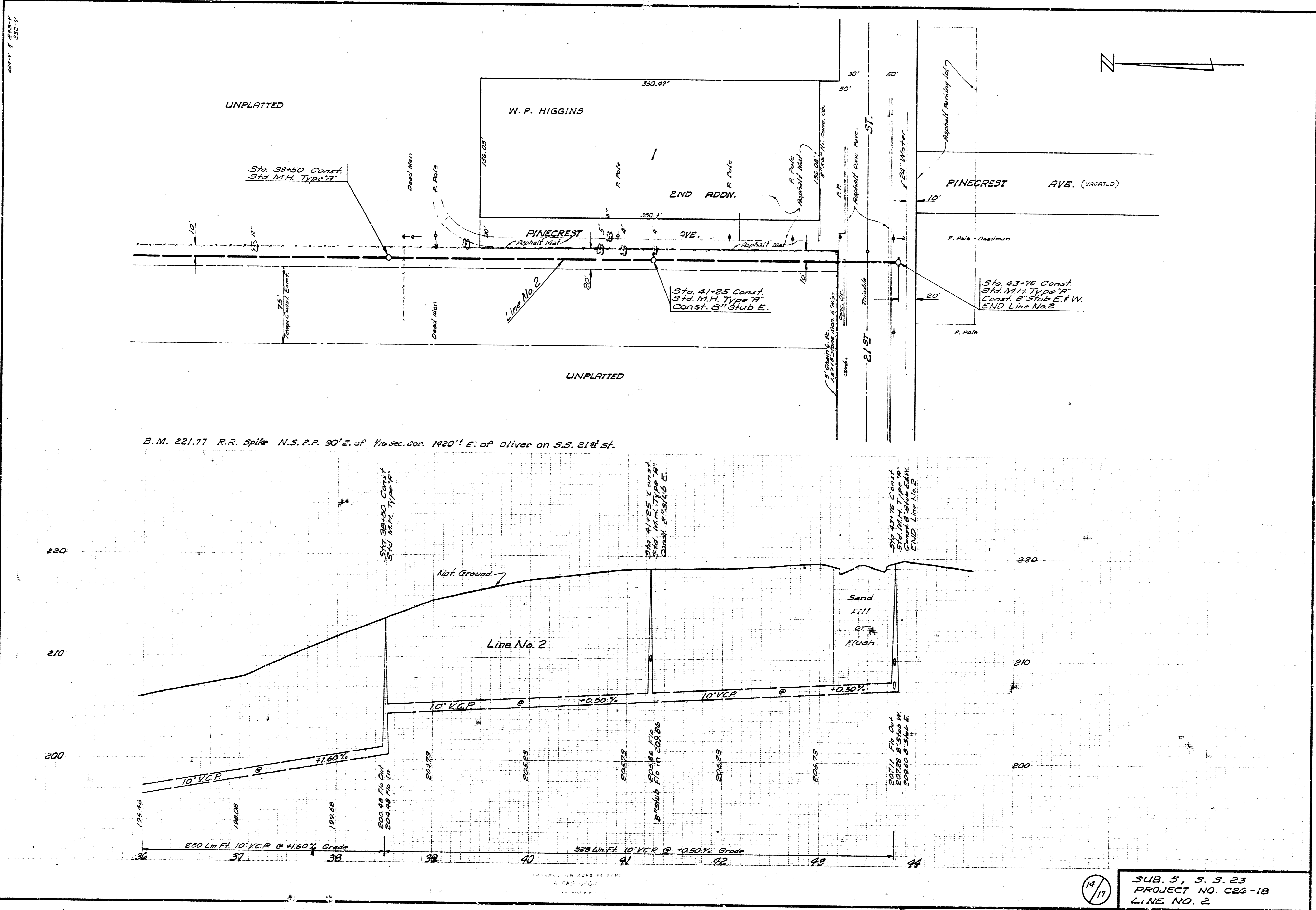
25

592.8 Lin. Ft. 15" VCP @ +0.4% Grade

562.8 Lin. Ft. 12" VCP @ +0.8% Grade

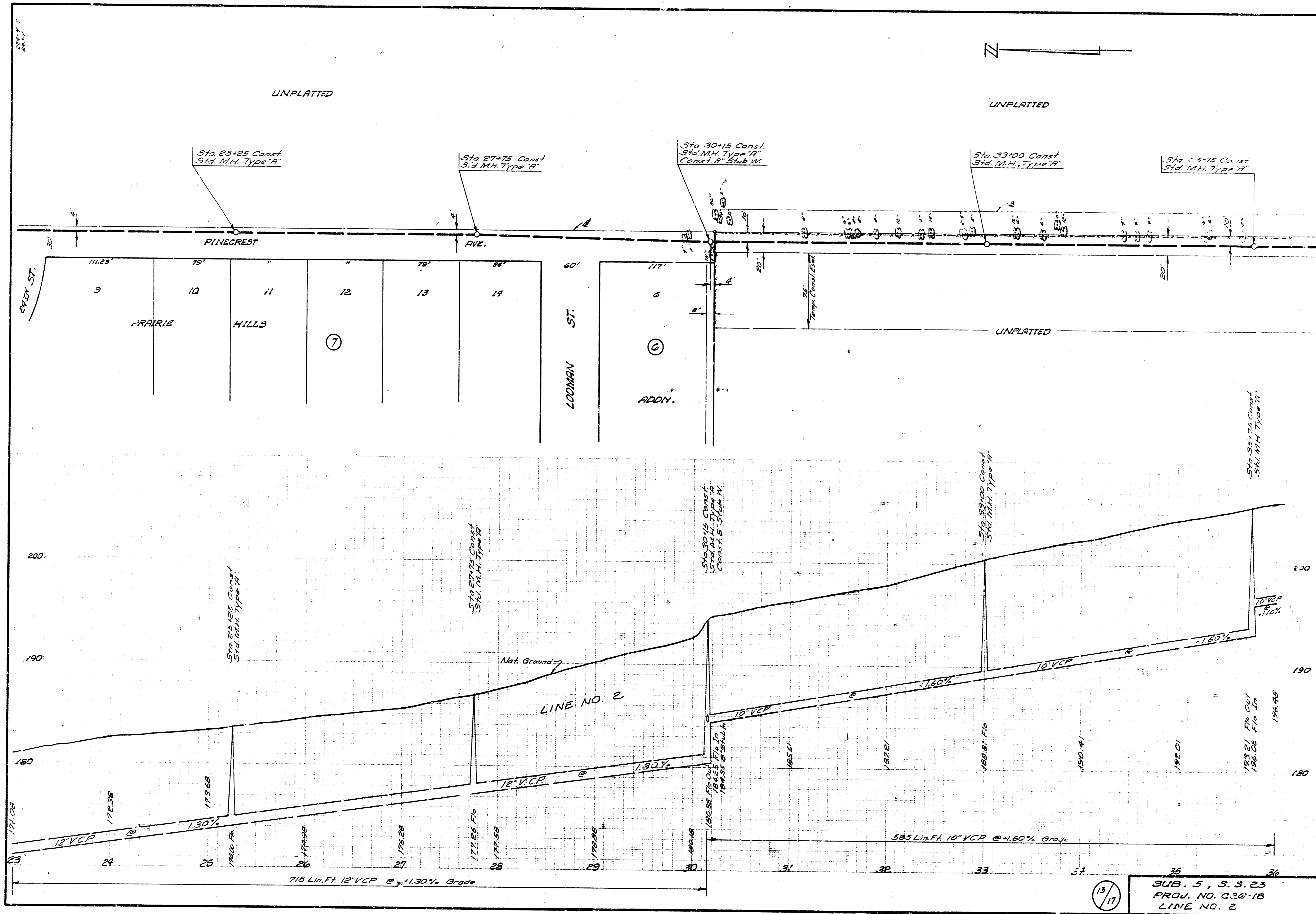
12/17

SUB. 5, J. S. 23
PROJ. 140, C26-18
LINE NO. 2



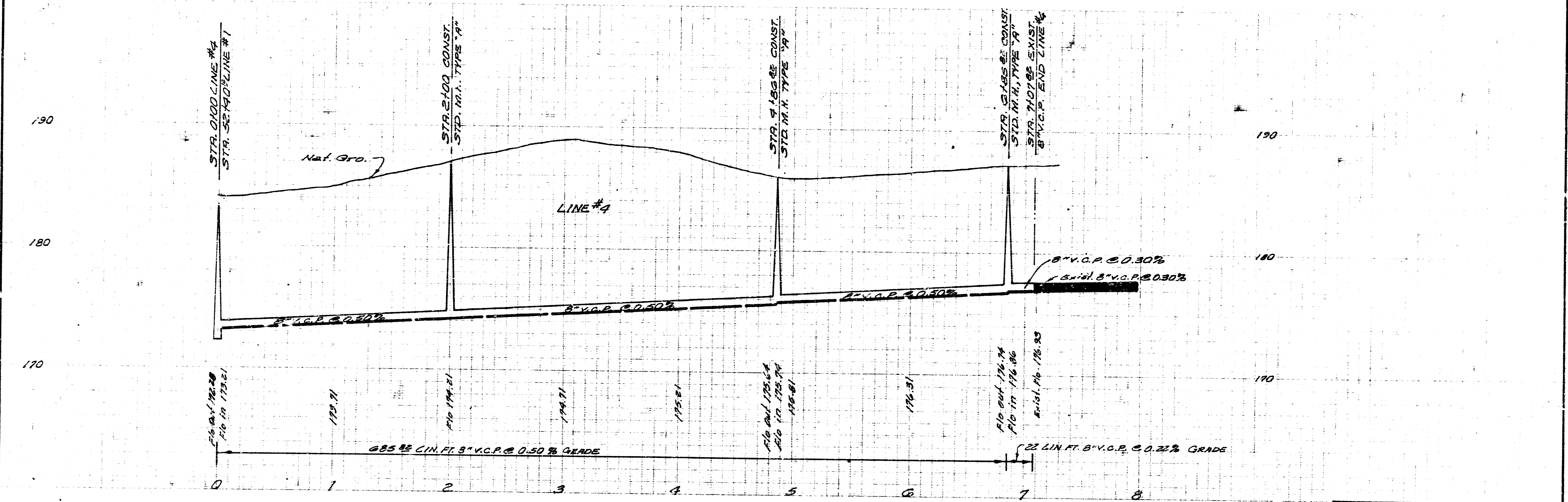
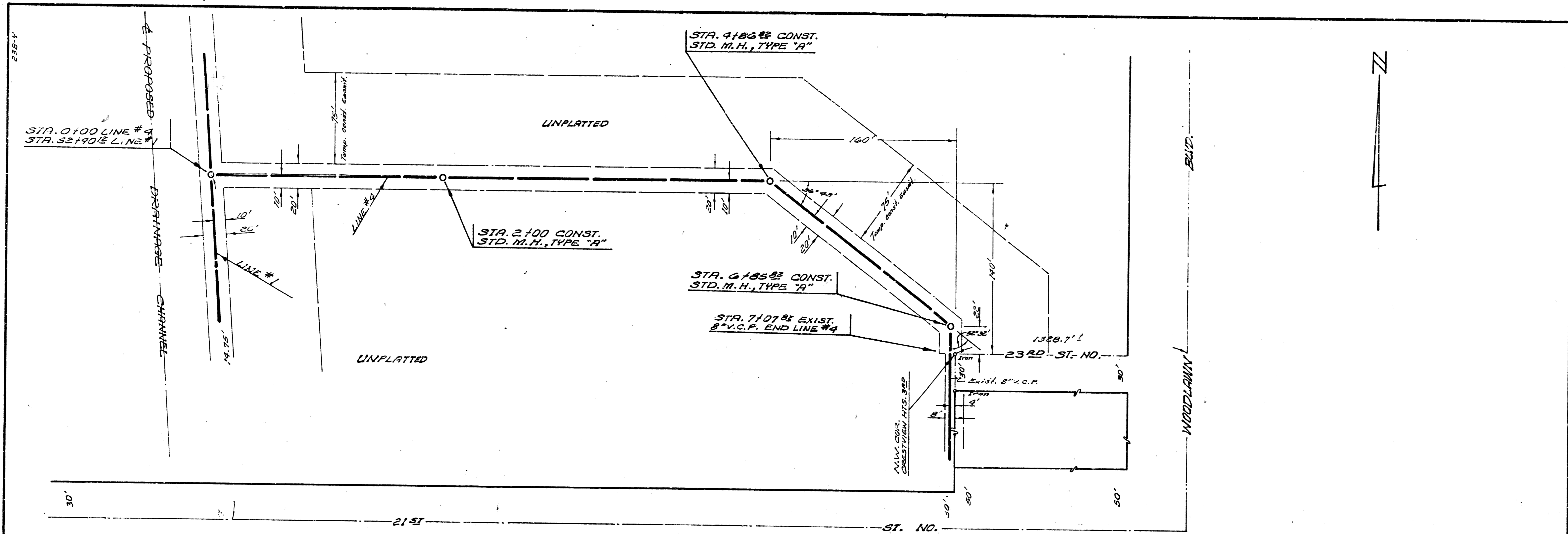
14/11

SUB. 5, S. 3. 23
PROJECT NO. C26-18
LINE NO. 2



13/17

SUB. 5, S. 3. 23
 PROJ. NO. C36-1B
 LINE NO. 2



16/17
 SUB. 5, S. S. 23
 PROJ. NO. C26-18
 LINE NO. 4

