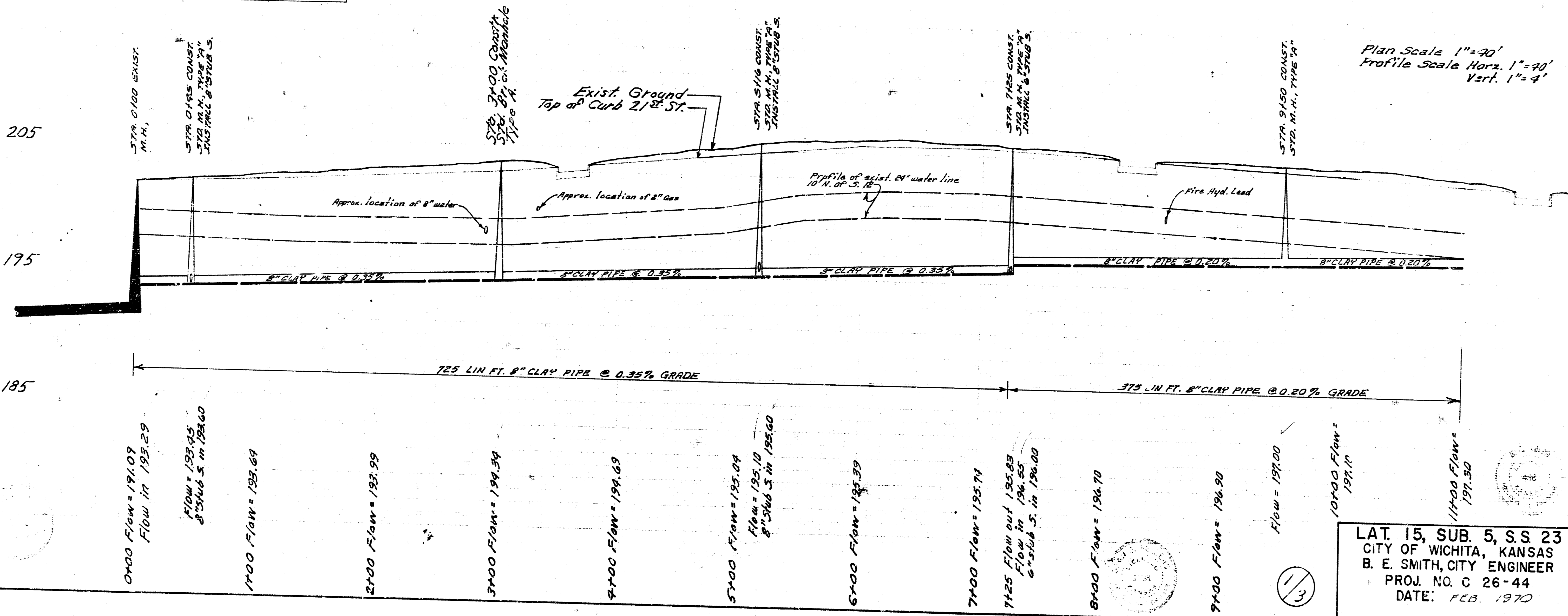
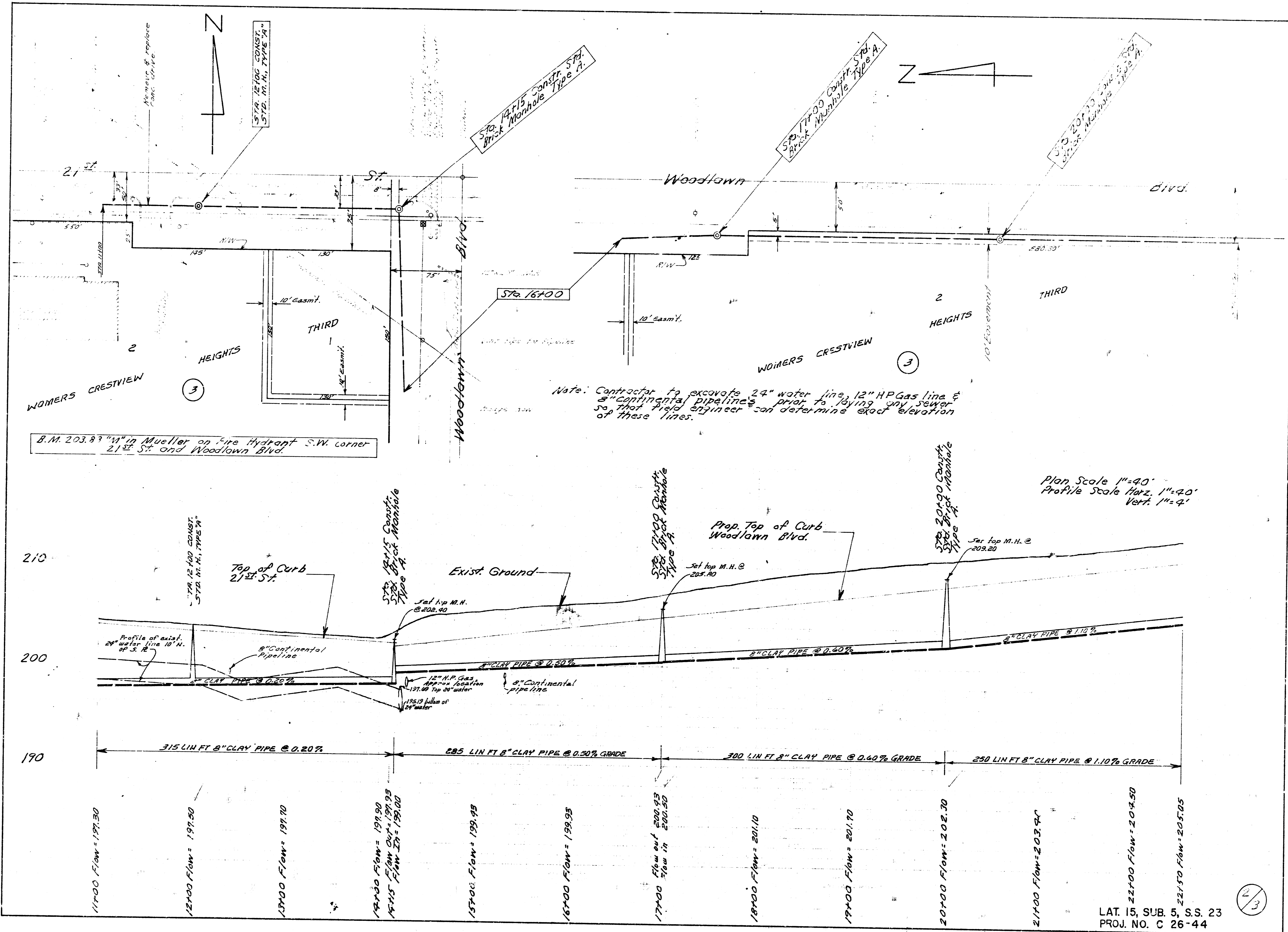


87.1 201.45 Top east rim of exist manhole at Sta. 0+00.



Plan Scale 1"=40'
Profile Scale Horiz. 1"=40'
Vert. 1"=4'

LAT. 15, SUB. 5, S.S. 23
CITY OF WICHITA, KANSAS
B. E. SMITH, CITY ENGINEER
PROJ. NO. C 26-44
DATE: FEB. 1970



B.M. 203.83 "M" in Mueller on Fire Hydrant S.W. corner 21st St. and Woodlawn Blvd.

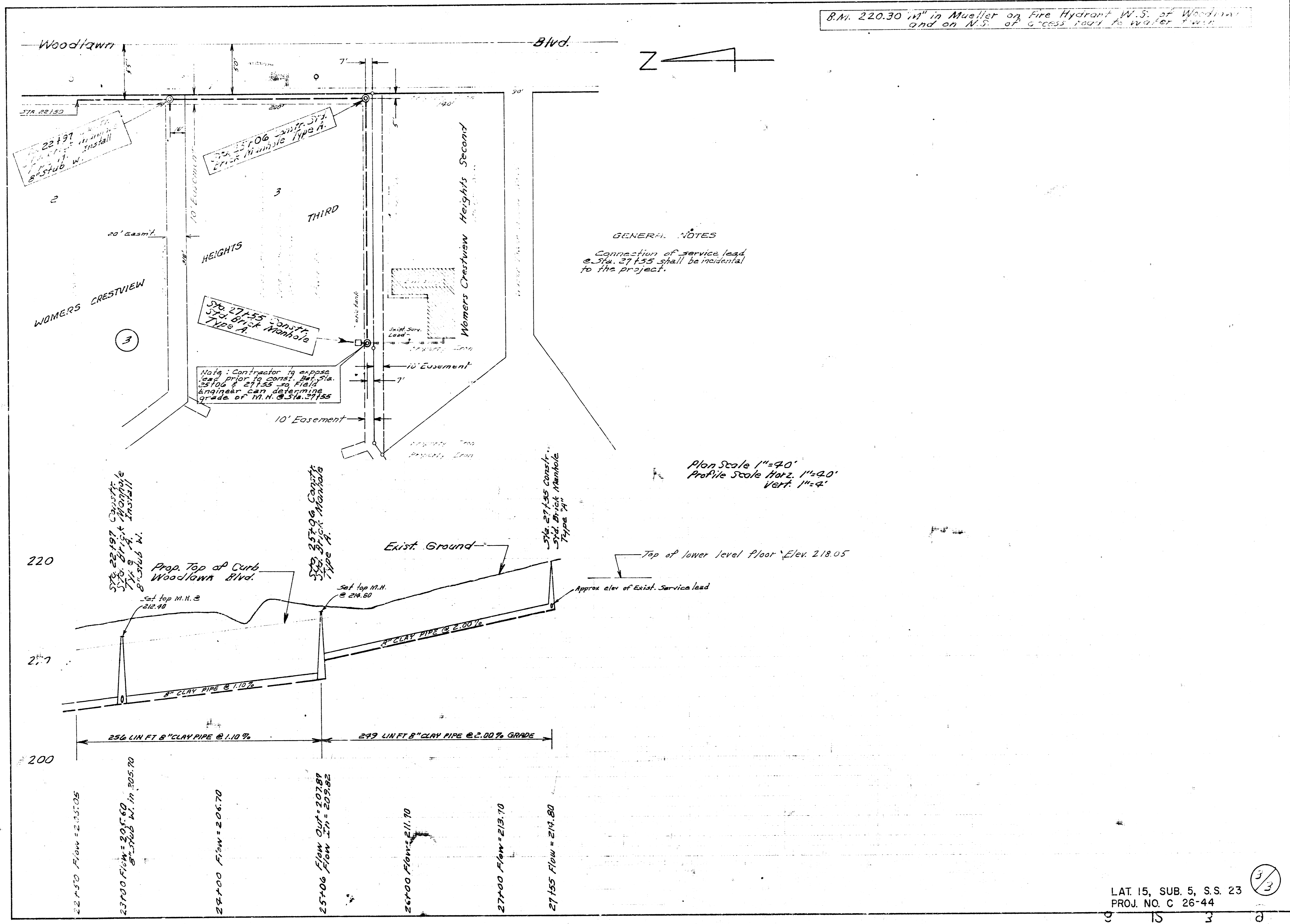
Note: Contractor to excavate 24" water line, 12" H.P. Gas line & 8" Continental pipeline's prior to laying any sewer so that field engineer can determine exact elevation of these lines.

Plan Scale 1"=40'
Profile Scale Horz. 1"=40'
Vert. 1"=4'

LAT. 15, SUB. 5, S.S. 23
PROJ. NO. C 26-44

23

B.M. 220.30 in Mueller on Fire Hydrant W.S. of Woodlawn and on N.S. of access road to water tower.



GENERAL NOTES
 Connection of service lead @ Sta. 27155 shall be incidental to the project.

Plan Scale 1"=40'
 Profile Scale Horiz. 1"=40'
 Vert. 1"=4'

LAT. 15, SUB. 5, S.S. 23
 PROJ. NO. C 26-44

3/3

9 15 3 8