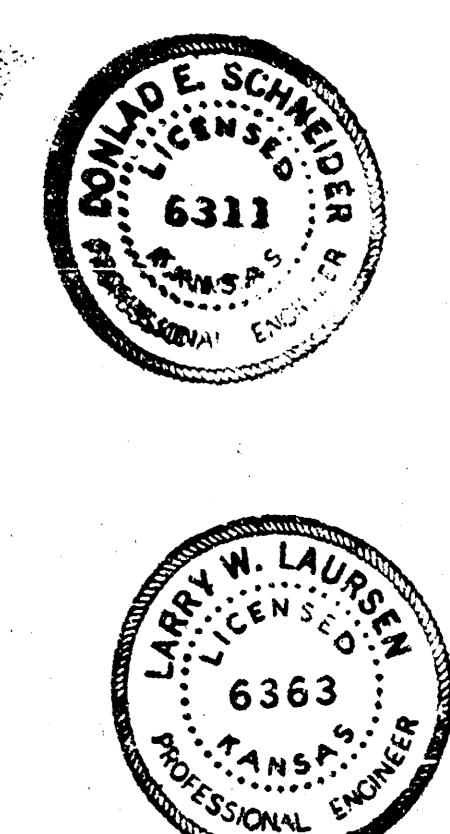
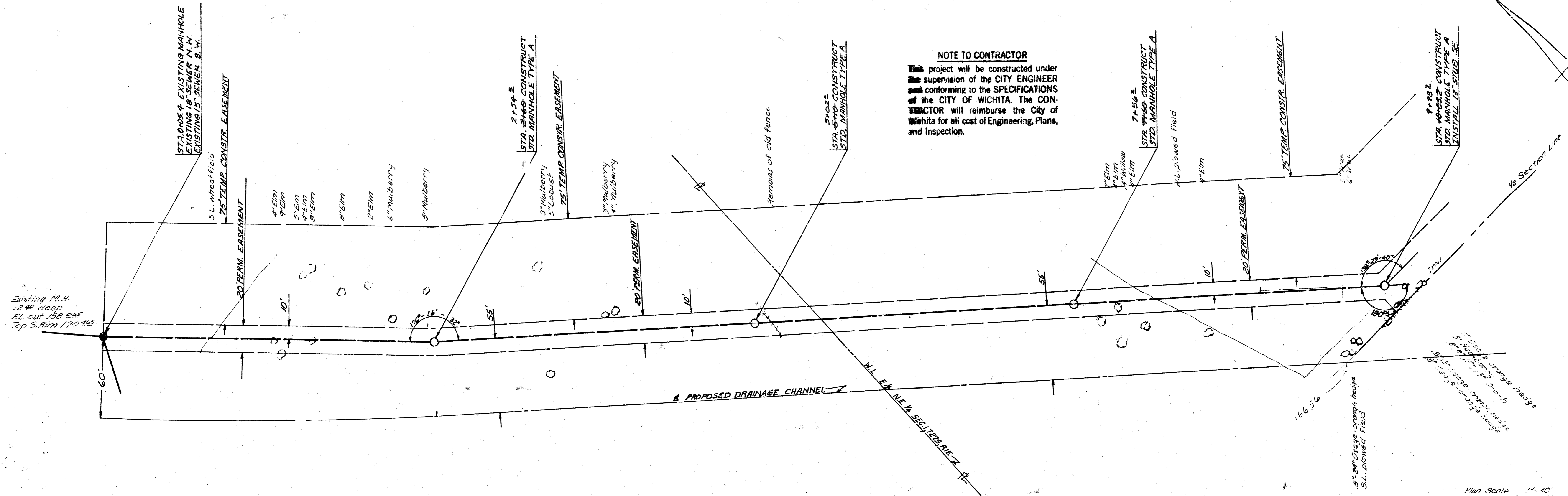


2. 12. 1972

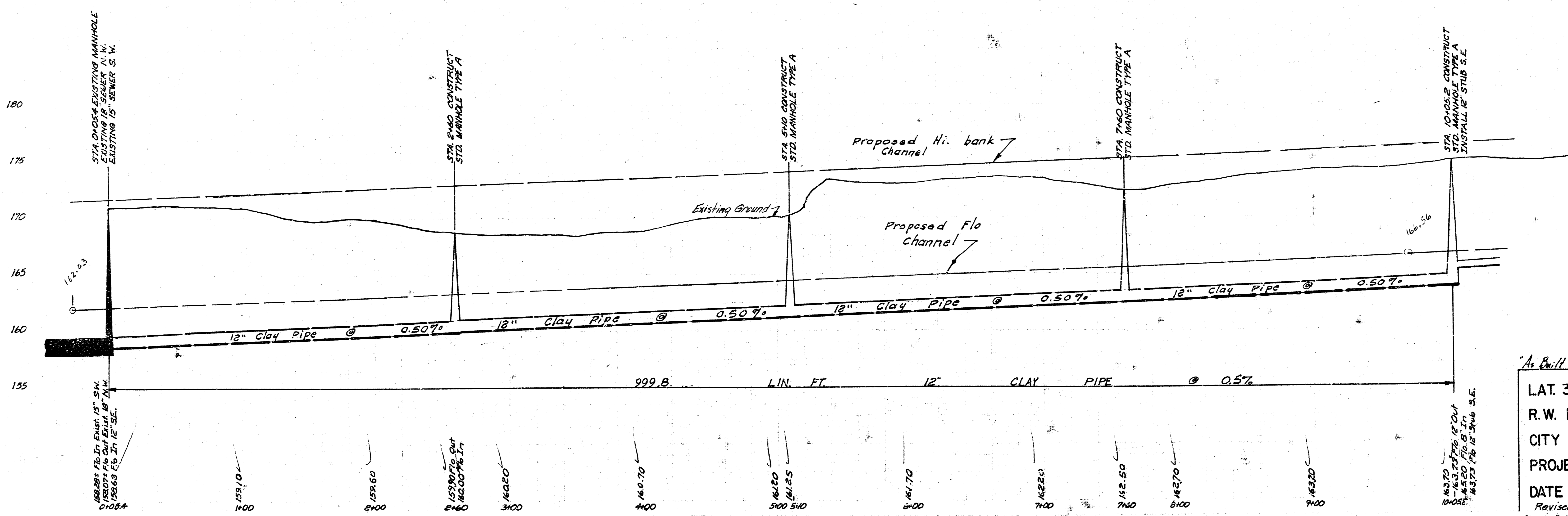
B.M. 200.65 City Std @ N.E. cor. Woodlawn & 21st.
 B.M. 188.477 City Std. 1/2 north of 21st on Woodlawn.
 B.M. 175.61 R.R. spike E. face orange hedge, Sta. 9+77.55.
 B.M. 170.175 S. Rim existing M.H., Sta. 0+00.

NOTE: FIELD ENGINEER TO ESTABLISH SEWER ALIGNMENT USING GIVEN DIMENSIONS AND ANGLES FROM THE S. E. CORNER OF THE N. E. QUARTER OF SEC. 1, T27S, R1E OF 6th P.M.

NOTE TO CONTRACTOR
 This project will be constructed under the supervision of the CITY ENGINEER and conforming to the SPECIFICATIONS of the CITY OF WICHITA. The CONTRACTOR will reimburse the City of Wichita for all cost of Engineering, Plans, and Inspection.



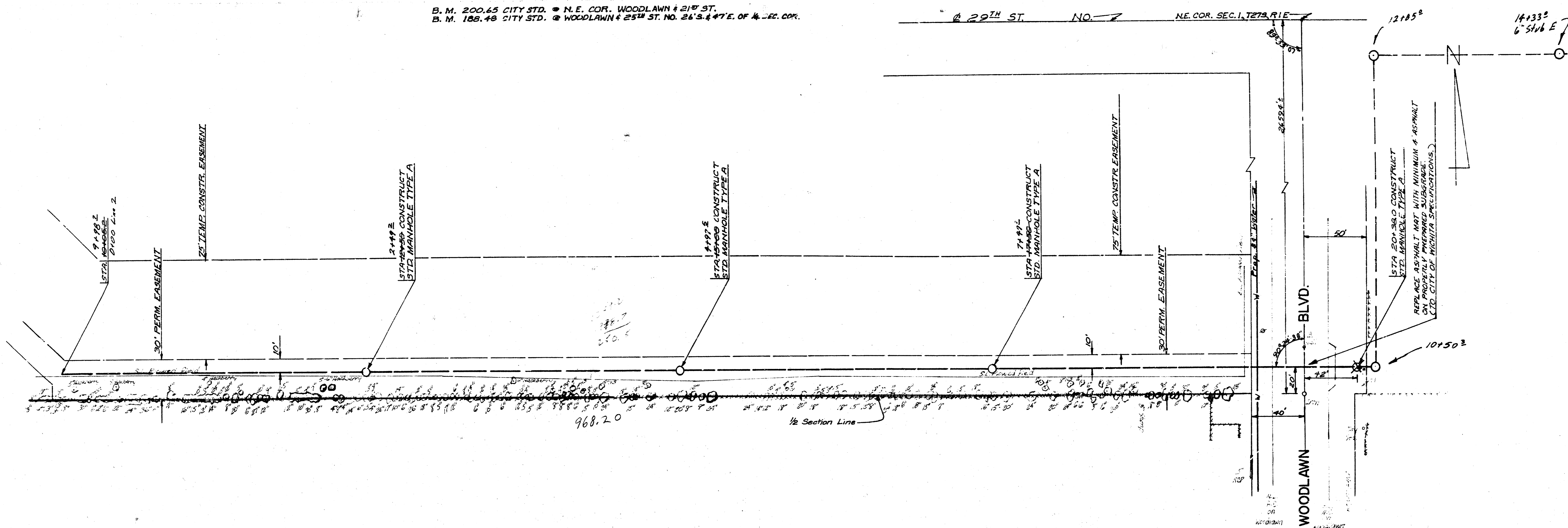
Plan Scale 1" = 40'
 Prof. Scale 1/4" = 40'
 Prof. Scale 1/8" = 5'



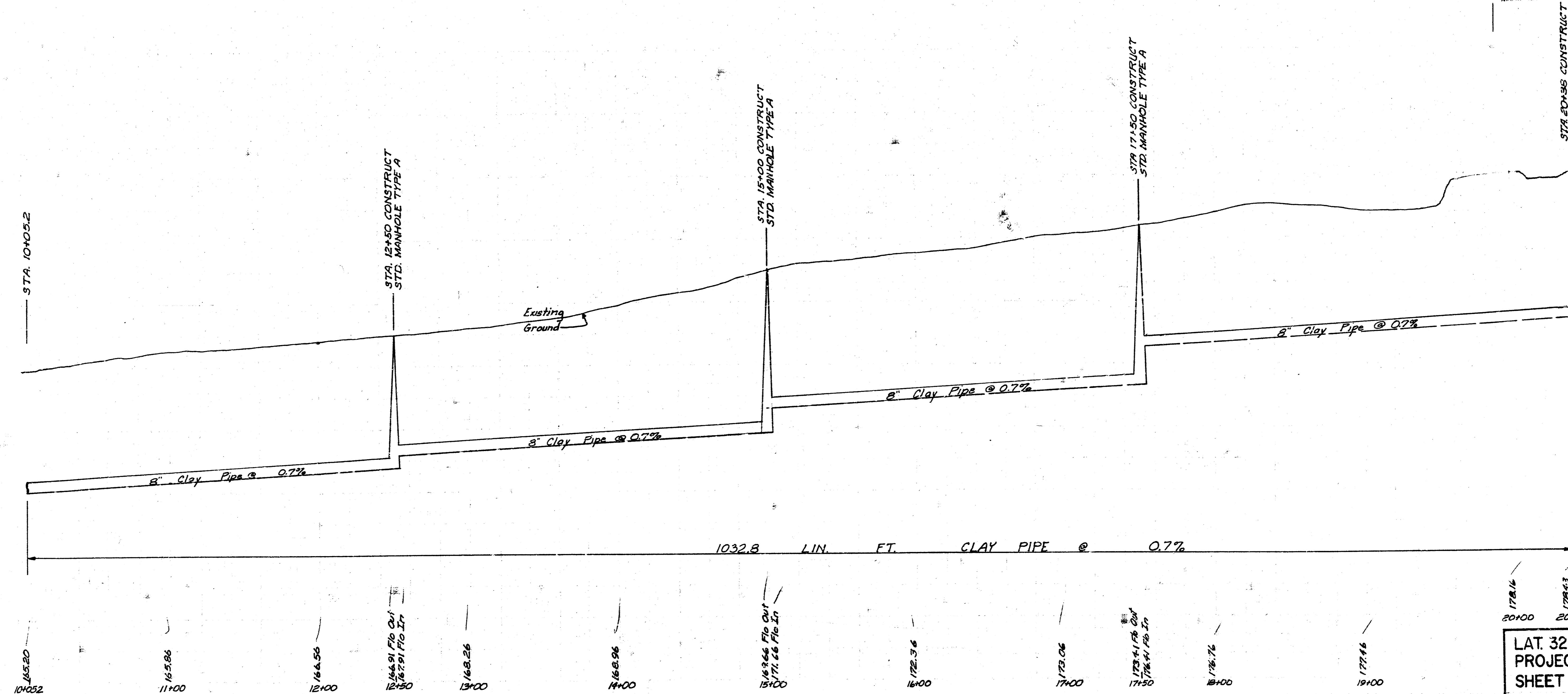
"As Built" Final records IH-80
 LAT. 32, MAIN 5, S.S. NO. 23
 R.W. LINN CITY ENGINEER
 CITY OF WICHITA, KS.
 PROJECT NO. AAKB 502027
 DATE Aug. 1972
 Revised 10-26-72
 Sheet 2 of 1-31-73 1/2

Exhibit D
1/12

B. M. 200.65 CITY STD. @ N.E. COR. WOODLAWN & 21ST ST.
B. M. 188.48 CITY STD. @ WOODLAWN & 25TH ST. NO. 26'S. & 47'E. OF N.E. COR.



190
185
180
175
170
165
160



Plan Scale 1"=40'
Vert. Scale 1"=10'
Prof. Scale 1"=5'

LAT. 32, MAIN 5, S.S. NO. 23
PROJECT NO. AAKB 502027
SHEET NO. 2 of 2
Revised 10-20-72

FILMED FROM THE BEST