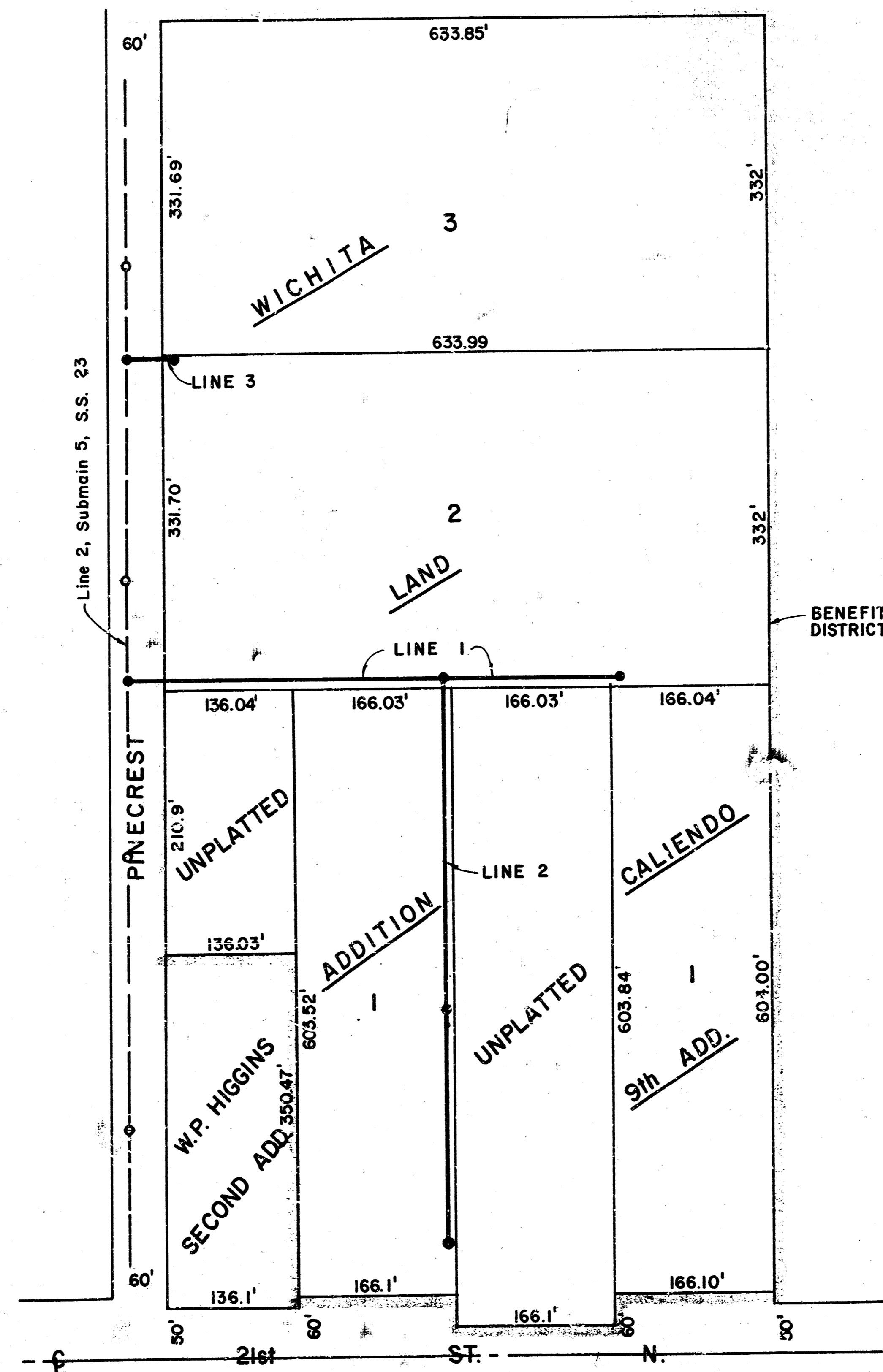


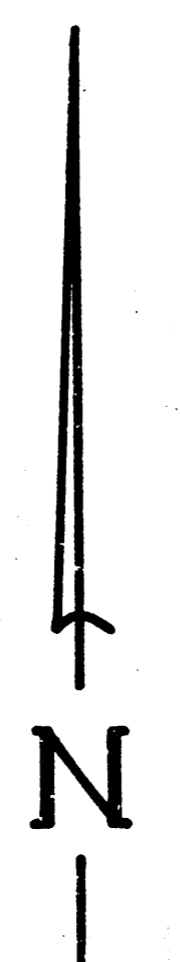
# LATERAL 44, MAIN 5, SANITARY SEWER No. 23

Project no. 468-76-245-81320-000-000-001

CITY OF WICHITA, KANSAS  
MIKE LINDEBAK CITY ENGINEER



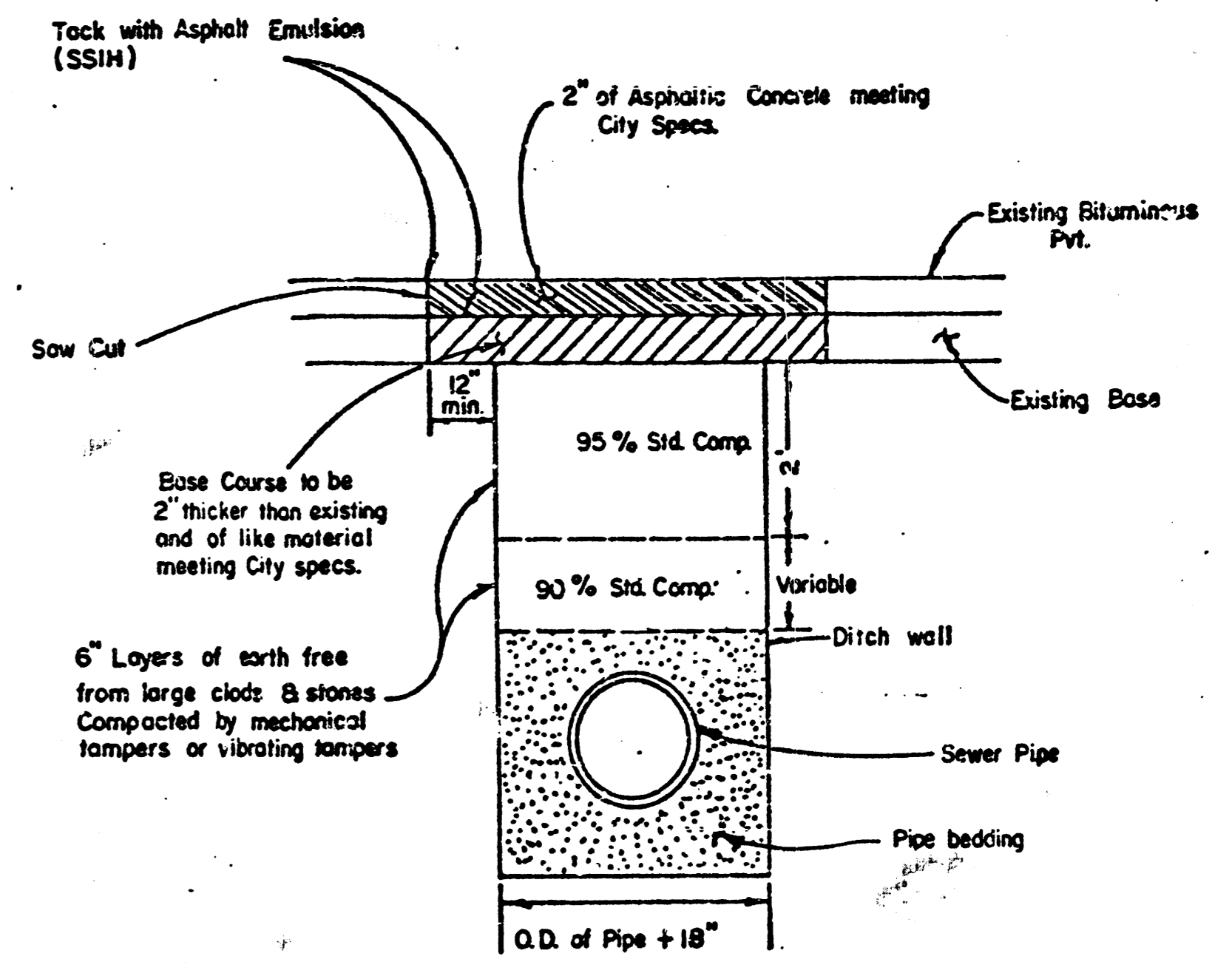
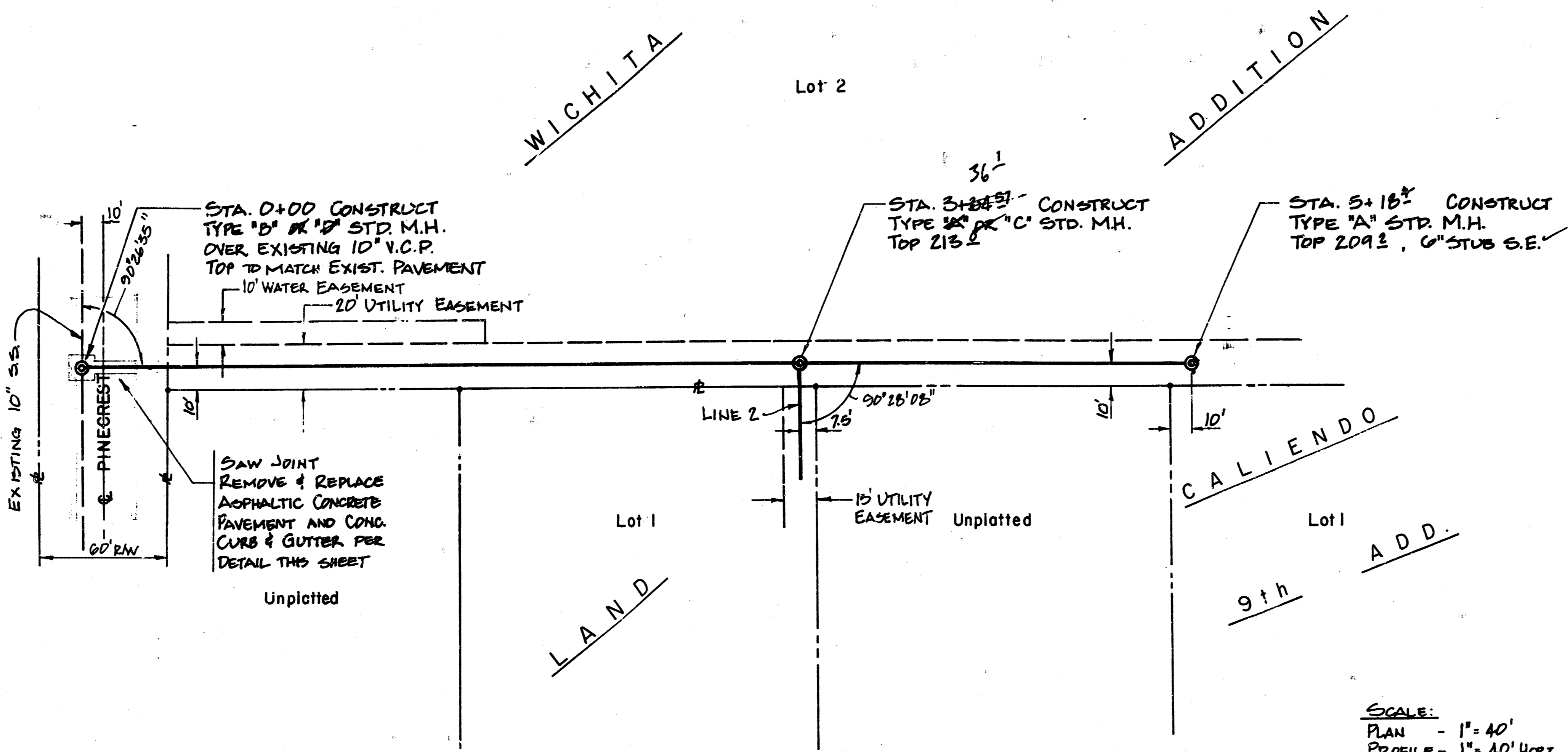
As Built  
J.L.L.  
8-84



1/3

BAUGHMAN COMPANY, P.A.  
SURVEYING & ENGINEERING  
316/262-7271 • 330 LAURA • WICHITA, KANSAS 67211

FILMED FROM THE BEST



Pavement shall be removed to 1.0' min. beyond limits of trench and manhole excavation, or to next construction joint within 4'. All cuts shall be rectangular.

Standard Density Test, as described in the latest addition of ASTM D 698, shall be performed to verify the above requirements to the Satisfaction of the Dept. of Engineering or the Dept. of Operations and Maintenance. All testing cost shall be included in the unit price bid for the pipe in place.

**PAVEMENT REPLACEMENT DETAIL**

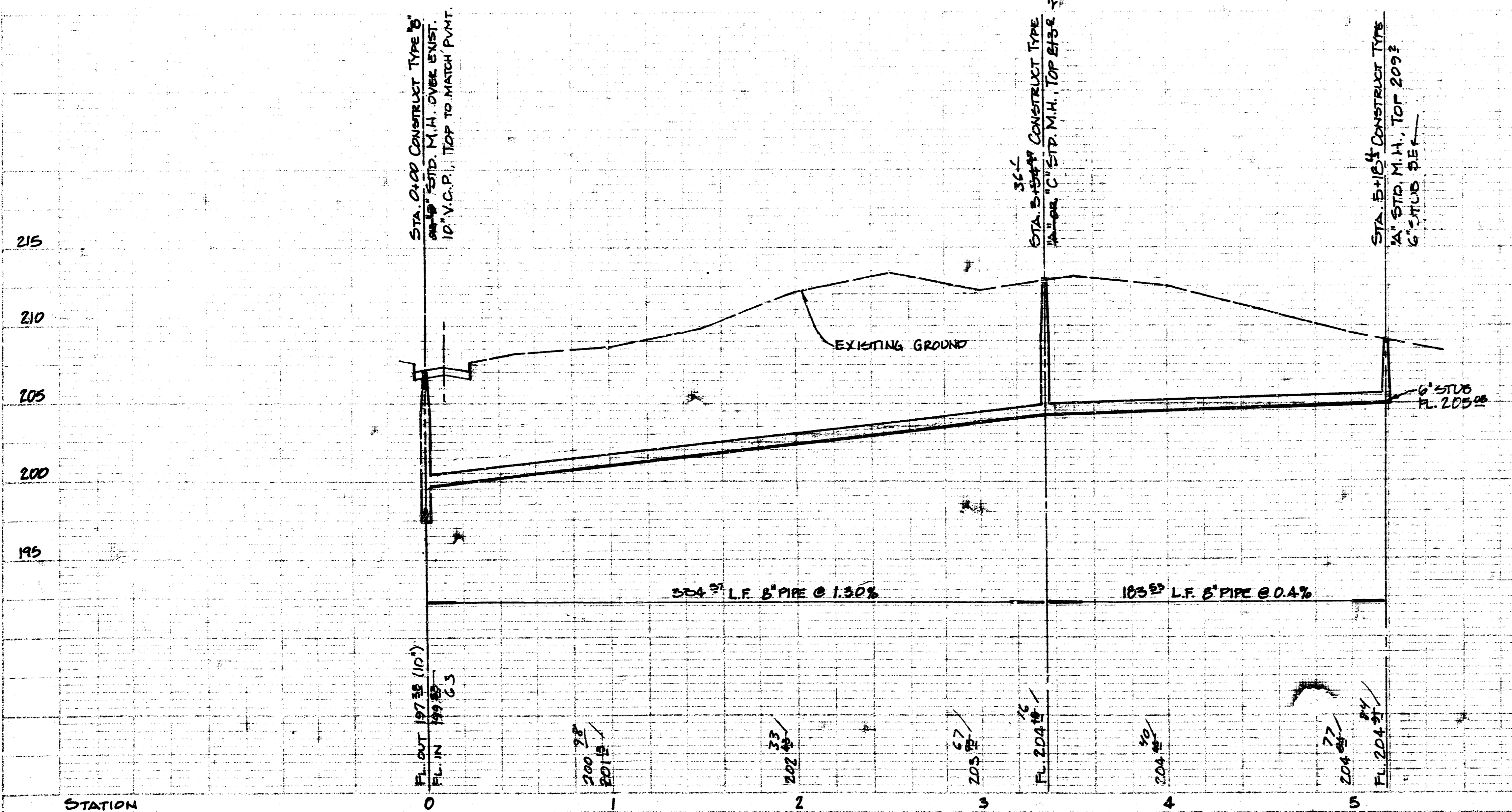
**SCALE:**  
 PLAN - 1" = 40'  
 PROFILE - 1" = 40' HORIZ.  
 1" = 5' VERT.

**BENCH MARKS**  
 'D' CUT ON CORNER OF WALK  
 AT S.W. COR. WOODGATE 2ND ADD.  
 ELEV. 221.82

'D' CUT ON TOP OF CURB, 45.81' W. OF  
 S.W. COR. LOT 2, WICHITA LAND ADD.  
 ELEV. 207.28

**NOTE:**  
 THE CONTRACTOR SHALL BE RESPONSIBLE FOR PROTECTION OF ALL PROPERTY CORNERS OR IRONS. ANY CORNERS DESTROYED BY THE CONTRACTOR'S OPERATION SHALL BE REPAIRS BY A LICENSED SURVEYOR OR PROFESSIONAL ENGINEER AT CONTRACTOR'S EXPENSE.

THE COST OF ANY TREE REMOVAL NECESSARY FOR THE PROJECT SHALL BE CONSIDERED AS INCIDENTAL TO THE COST OF LF PIPE.



**LATERAL 44, MAIN 5  
 SANITARY SEWER 23**

City of Wichita, Kansas

Project no. 468-76-245-81320-000-001

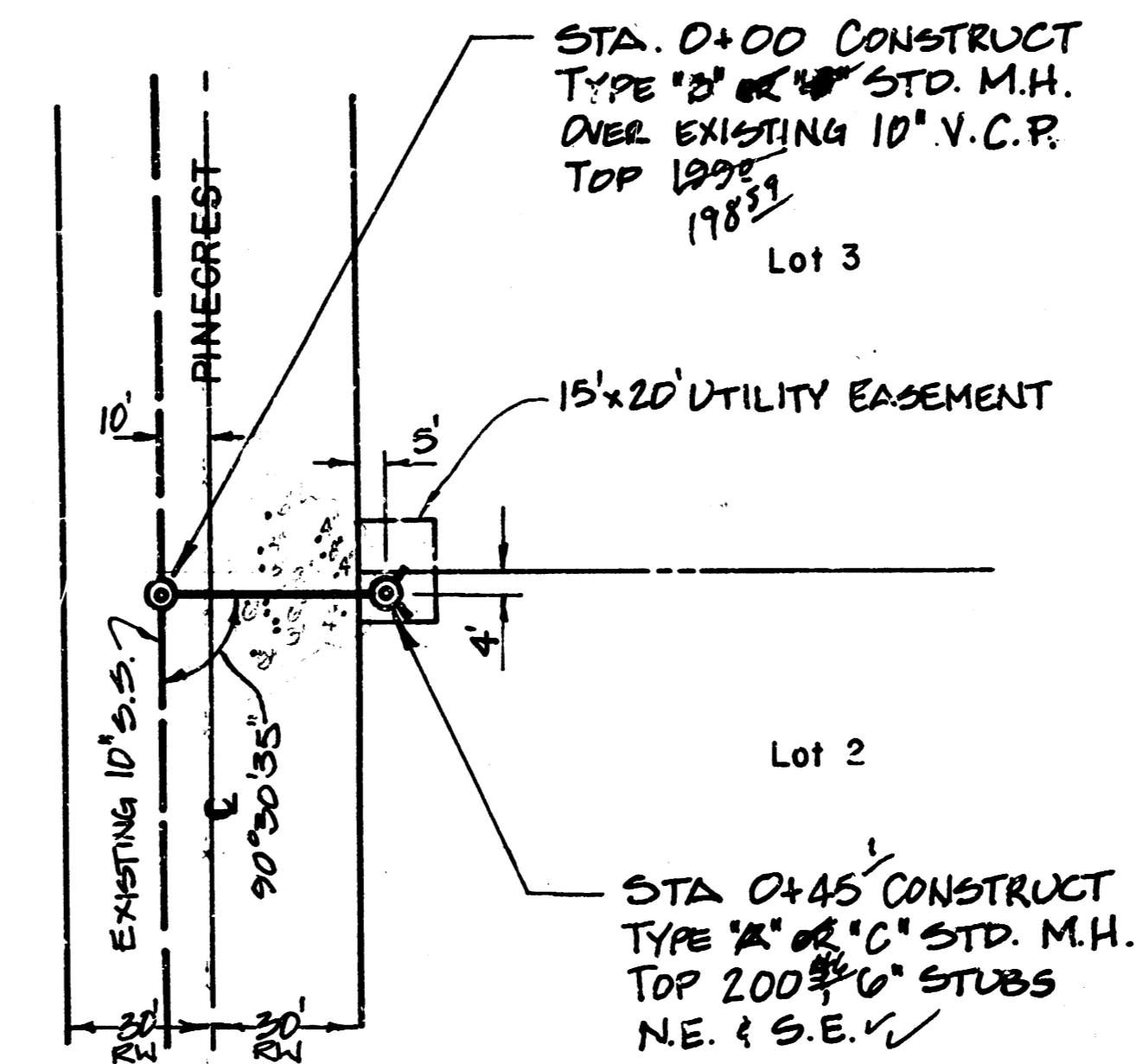
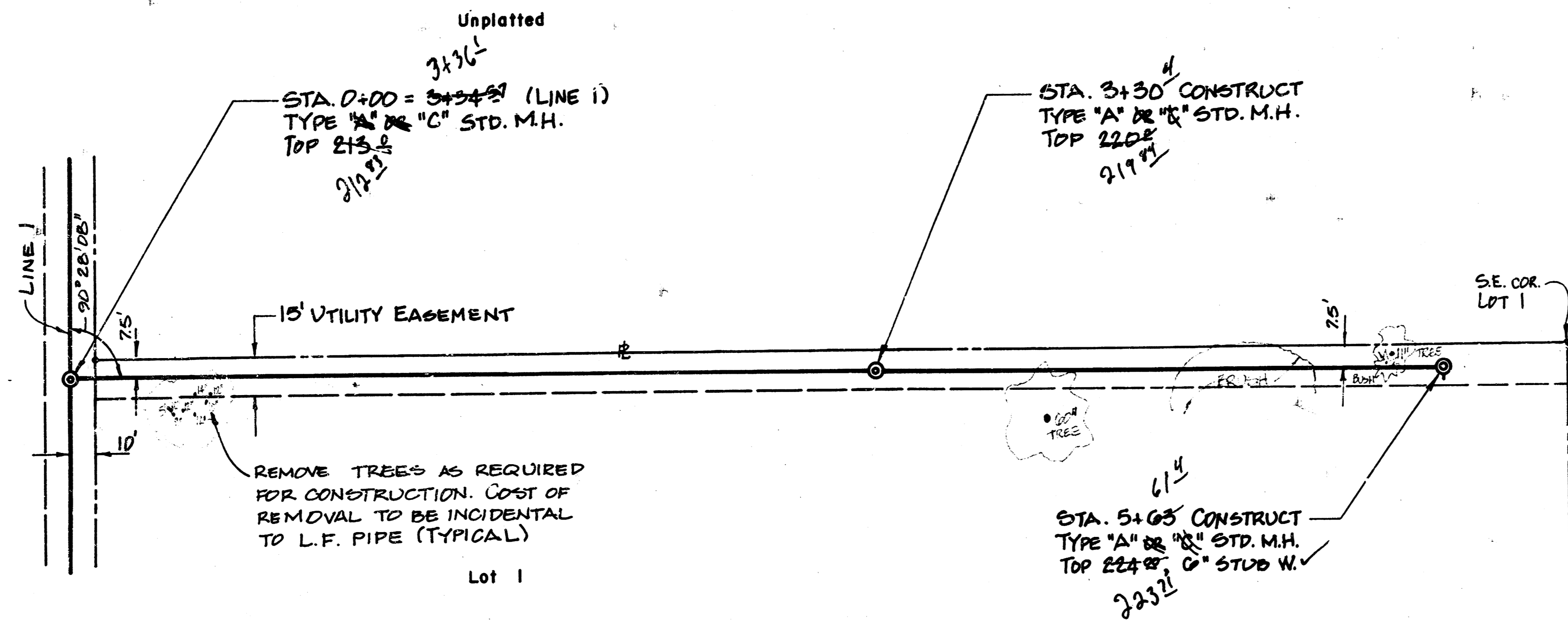
**BAUGHMAN COMPANY, P.A.**  
 SURVEYING & ENGINEERING  
 316/742-7271 • 289 LANNA • WICHITA, KANSAS 67211

WICHITA

Lot 2

LAND

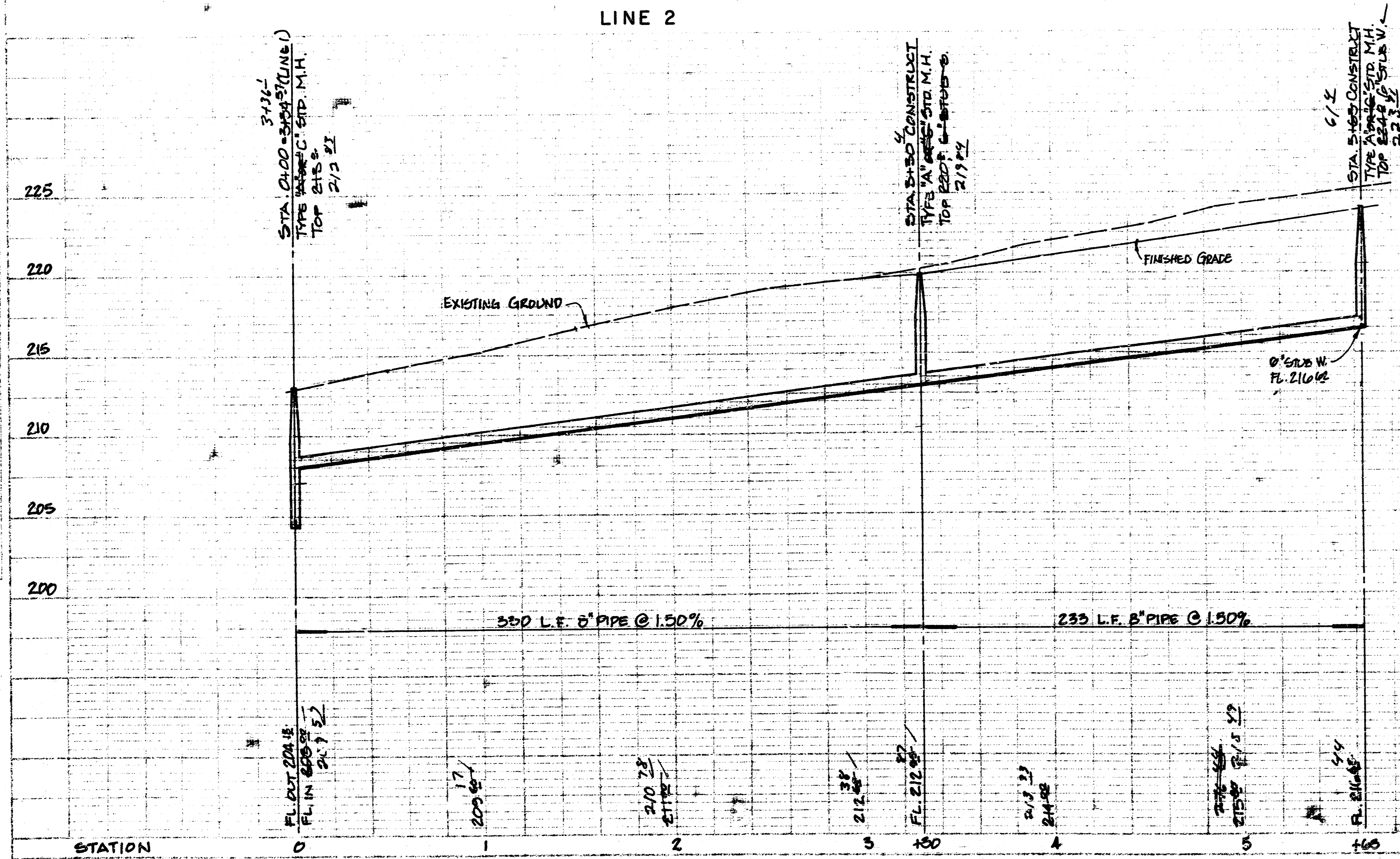
ADD



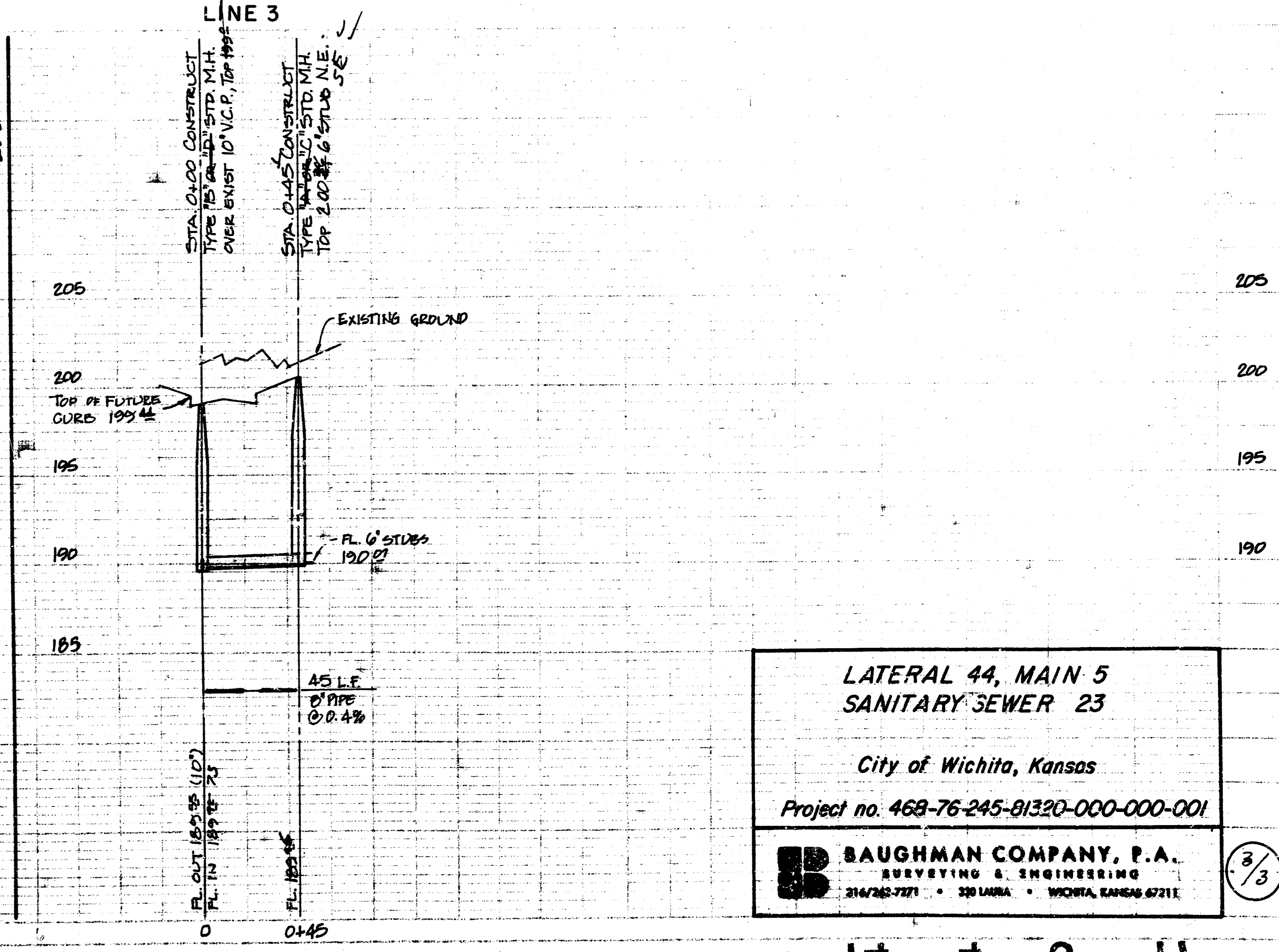
SCALE:  
PLAN - 1" = 40'  
PROFILE - 1" = 40' HORIZ.  
          1" = 5' VERT.

As Built  
J.L.L.  
8-84

LINE 2



LINE 3



LATERAL 44, MAIN 5  
SANITARY SEWER 23

City of Wichita, Kansas

Project no. 468-76-245-81320-000-001

BAUGHMAN COMPANY, P.A.  
SURVEYING & ENGINEERING  
2147 262-7271 • 230 LANNA • WICHITA, KANSAS 67211

3/3

14 4 3 11

FILMED FROM THE BEST