

**LAT 27, MAIN 7, SANITARY SEWER # 23**

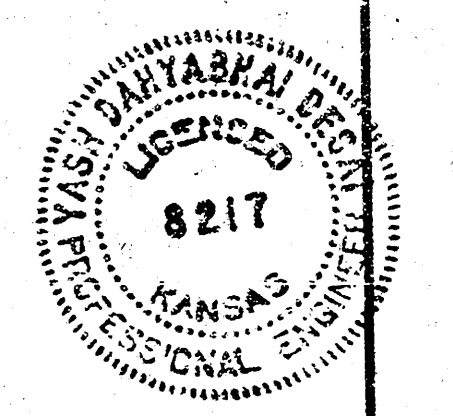
**CITY OF WICHITA, KANSAS**  
**R. W. BRUGGEMAN**  
**DIRECTOR OF ENGINEERING / CITY ENGINEER**

**PROJ. NO. 468-76-245-81195-000-000-001**

*As Built*  
*J.L.L.*  
*4-83*

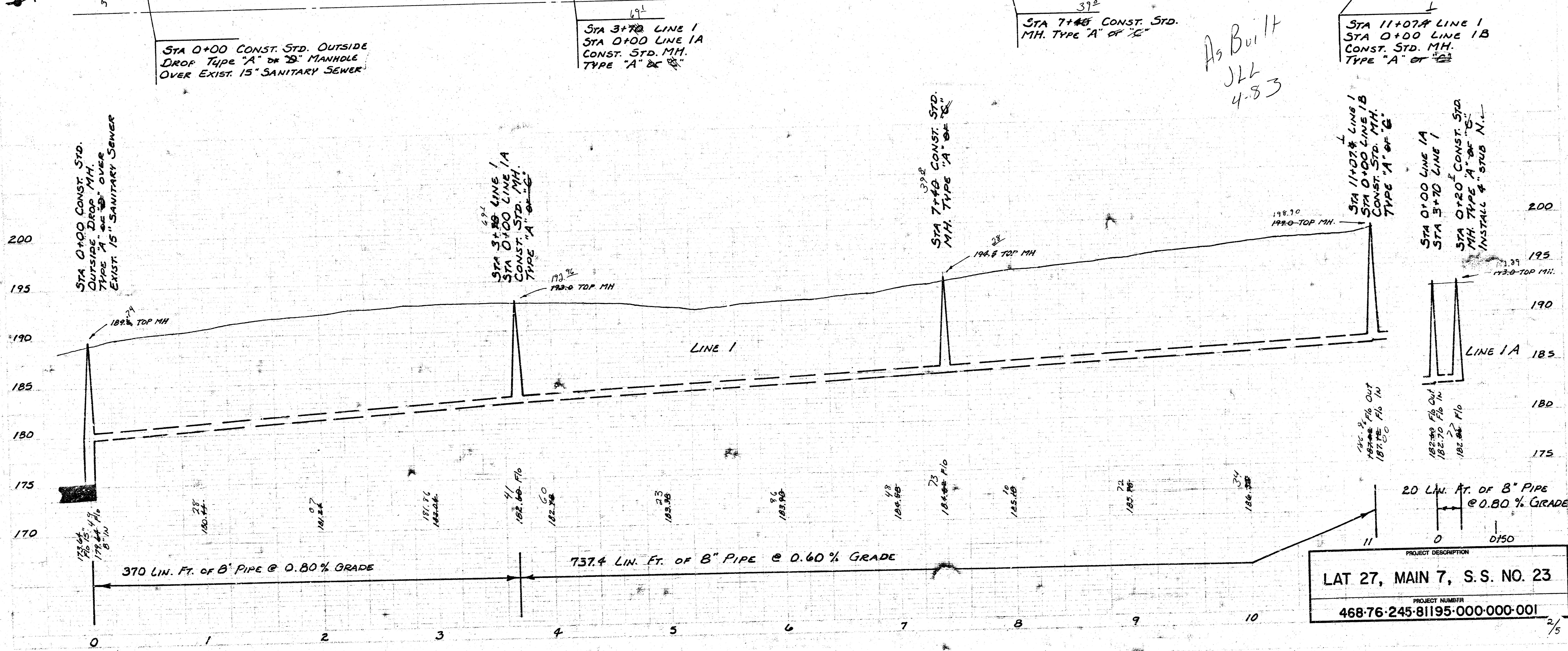
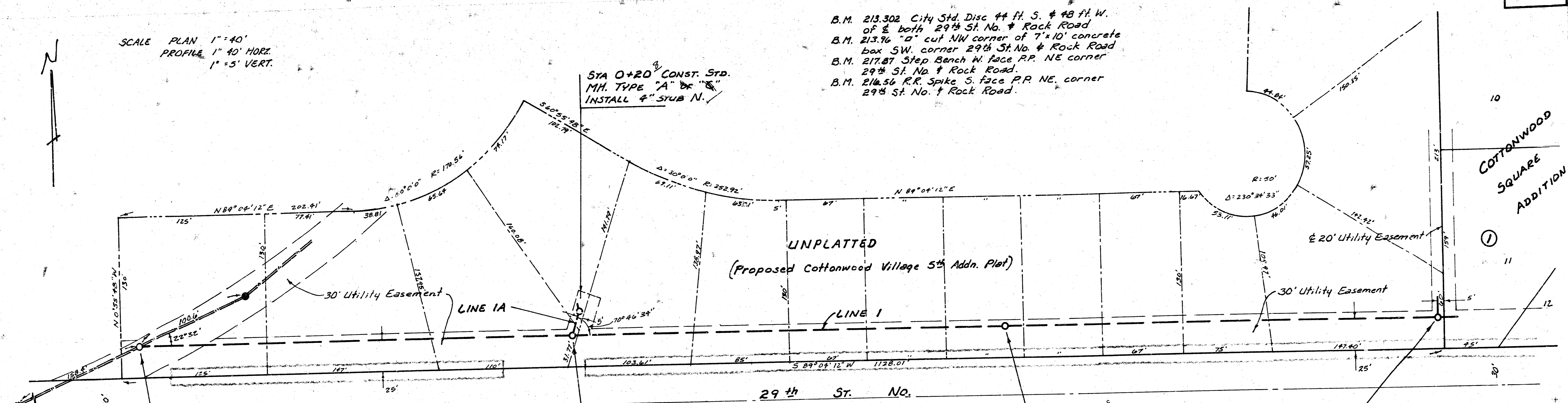
INDEX

Line 1	Sheets	2-3
Line 1A	Sheet	2
Line 1B	Sheet	3
Line 1C	Sheet	3
Line 2	Sheets	4-5
Line 2A	Sheet	4
Line 2B	Sheet	5
Line 3	Sheet	5



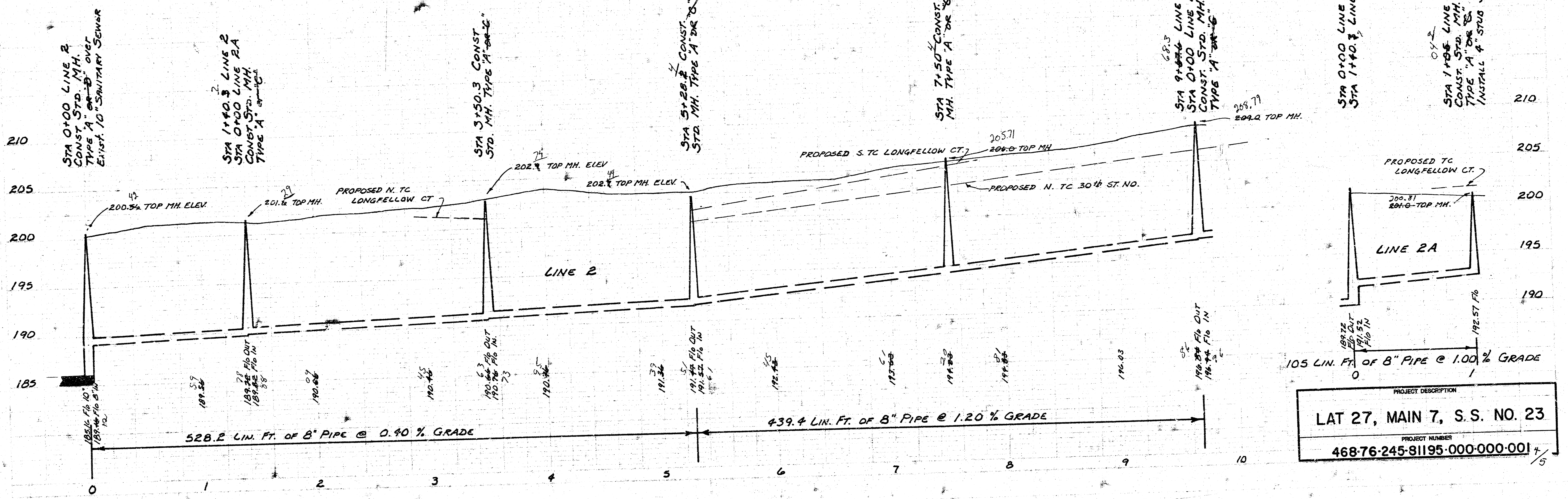
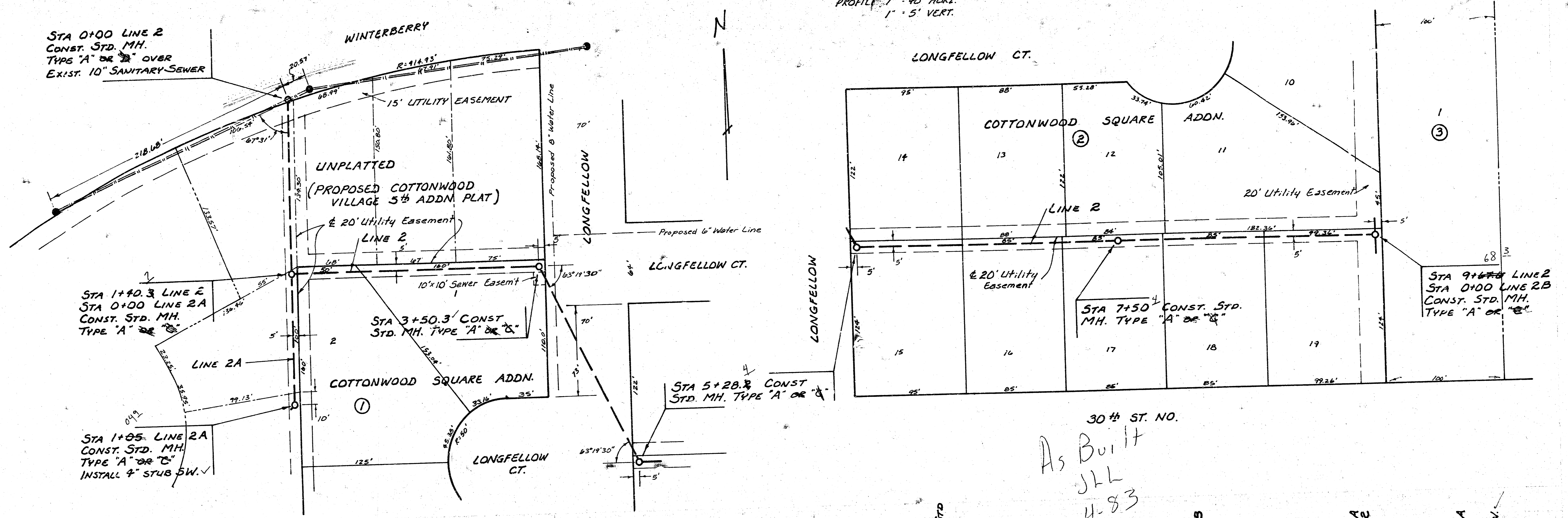
SCALE PLAN 1" = 40'  
PROFILE 1" = 5' VERT.

B.M. 213.302 City Std. Disc 44 ft. S. & 48 ft. W. of E. both 29th St. No. & Rock Road  
B.M. 213.76 "5" cut NW corner of 7'x10' concrete box SW corner 29th St. No. & Rock Road  
B.M. 217.87 Step Bench W. face P.P. NE corner 29th St. No. & Rock Road  
B.M. 214.56 R.R. Spike S. face P.P. NE corner 29th St. No. & Rock Road





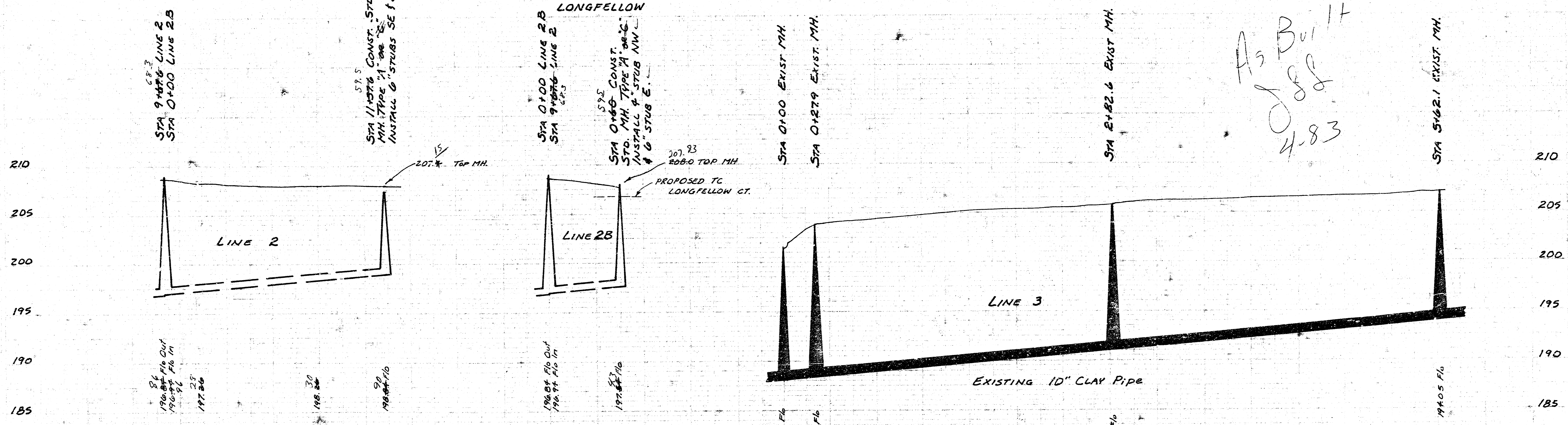
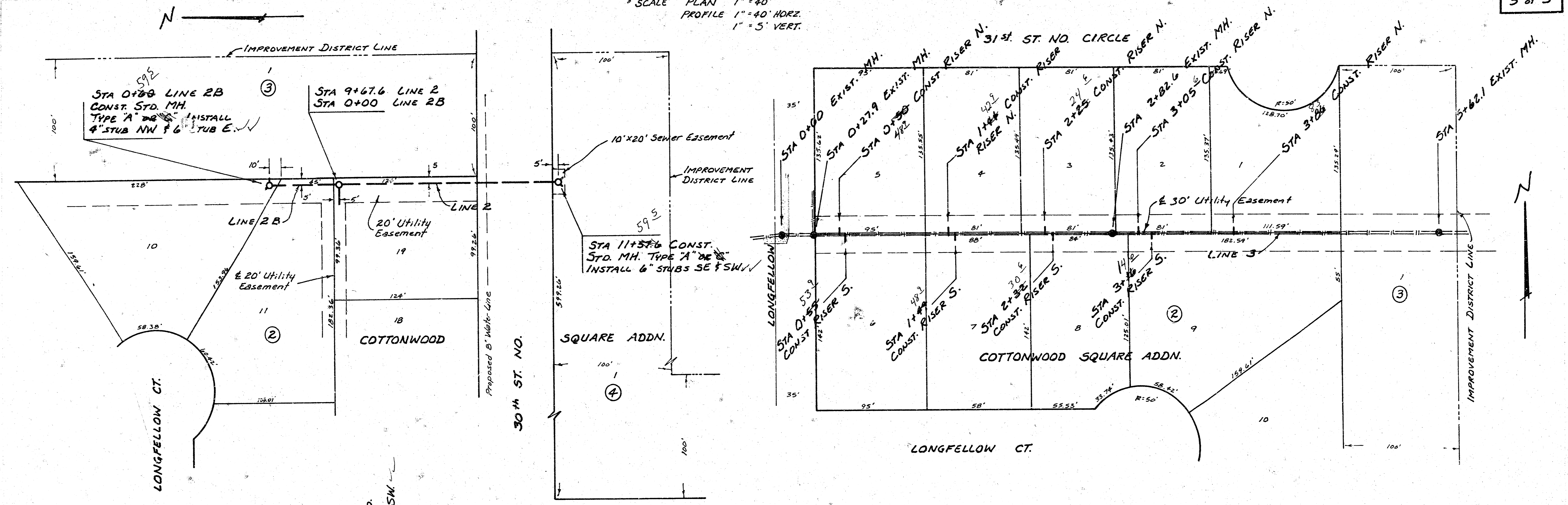
SCALE PLAN 1" = 40'  
 PROFILE 1" = 40' HORIZ.  
 1" = 5' VERT.



As Built  
 JHL  
 4.8.3

PROJECT DESCRIPTION  
**LAT 27, MAIN 7, S.S. NO. 23**  
 PROJECT NUMBER  
**468-76-245-31195-000-000-001**

SCALE PLAN 1" = 40'  
 PROFILE 1" = 40' HORZ.  
 1" = 5' VERT.



*As Built*  
*JSS*  
*4.83*

PROJECT DESCRIPTION  
**LAT 27, MAIN 7, S.S. NO. 23**  
 PROJECT NUMBER  
**468-76-245-81195-000-001**

10 5 3 11 6/5