

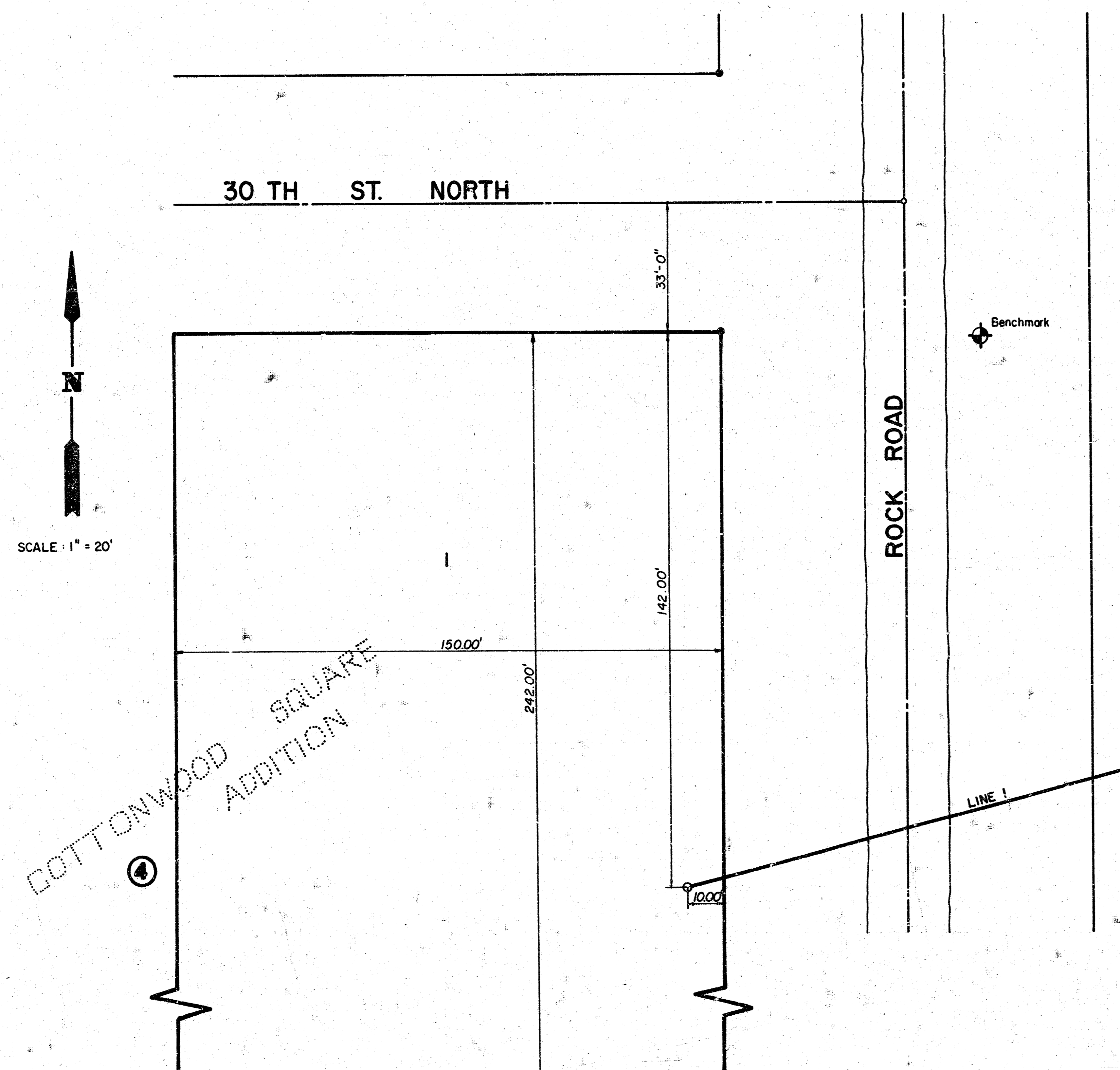
# LATERAL 28, MAIN 7, SANITARY SEWER NO. 23

PROJECT NO.

468-76-245-81216-000-000-001

CITY OF WICHITA, KANSAS  
R W BRUGGEMAN, CITY ENGINEER  
MAY, 1982

NOTE: CONTRACTOR'S CONSTRUCTION OPERATIONS SHALL BE SUCH THAT WILL CREATE THE LEAST POSSIBLE AMOUNT OF INCONVENIENCE TO VEHICULAR TRAFFIC ON ROCK ROAD.



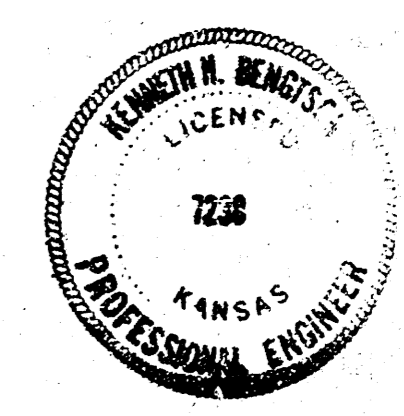
INDEX SHEET NO.	TO DRAWINGS DESCRIPTION
1	COVER SHEET
2	LINE 1

*As Built  
J.L.L.  
9.82*

LEGEND	
	PROPOSED LINE
	EXISTING LINE
	BENEFIT DISTRICT
	BENCH MARK "Ips" on east side of top rim on Fire Hydrant Elev. = 213.88

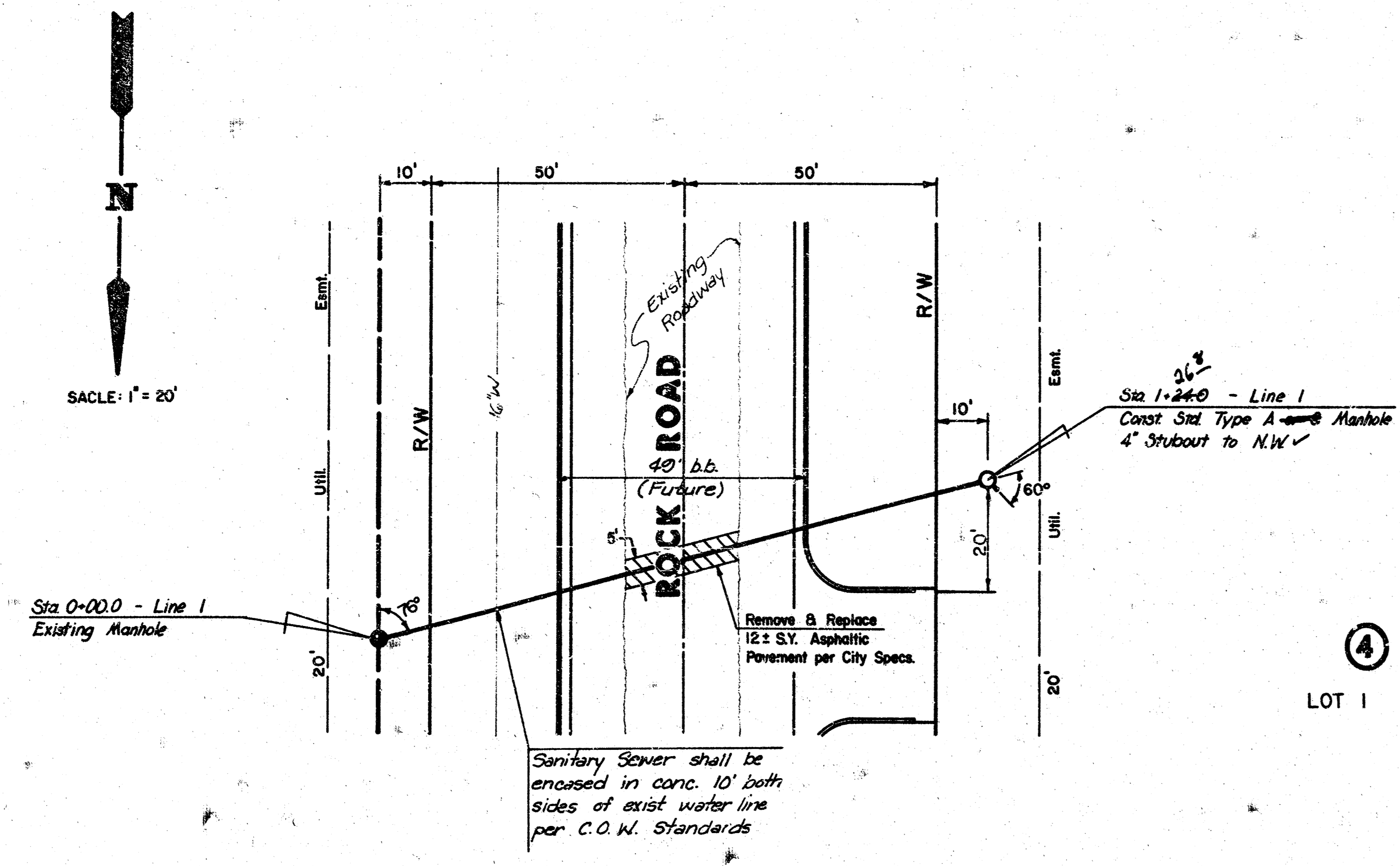
**NOTE TO CONTRACTOR**

The contractor shall be responsible for preserving property irons. The contractor shall be required to re-establish any property irons which are damaged or destroyed by his construction operations. Such irons shall be re-established by a licensed land surveyor or a licensed professional engineer in accordance with state laws.



Van Doren Hazard Stallings  
Architects - Engineers - Planners  
Topeka - Wichita - Minneapolis - Kansas City

Sheet 1 of 2



PLAN - LINE 1

As Built  
J.L.L.  
9-82

