

SANITARY SEWER PLANS

LAT. 38, MAIN 7 S.S.23

NORTHROCK BUSINESS PARK PHASE 2

PROJECT NO.

468-76-245-81624-000-000-001

CITY OF WICHITA, KANSAS
 MICHAEL E. LINDEBAK, CITY ENGINEER
 NOVEMBER, 1986

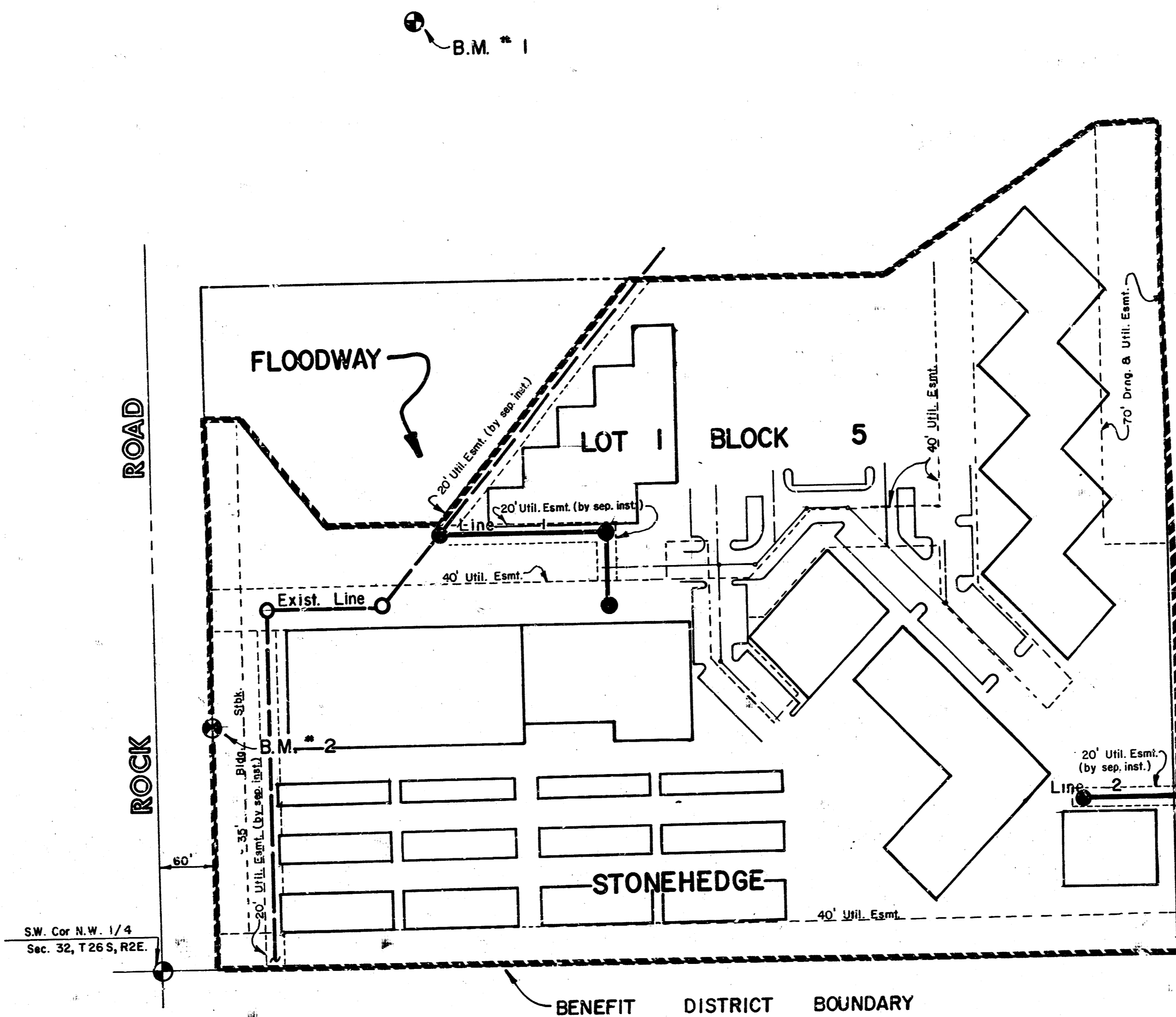
GENERAL NOTES

1. THE CONTRACTOR SHALL BE RESPONSIBLE FOR PRESERVING PROPERTY IRONS. THE CONTRACTOR SHALL BE REQUIRED TO RE-ESTABLISH ANY PROPERTY IRONS WHICH ARE DAMAGED OR DESTROYED BY HIS CONSTRUCTION OPERATIONS. SUCH IRONS SHALL BE RE-ESTABLISHED BY A LICENSED LAND SURVEYOR OR A LICENSED PROFESSIONAL ENGINEER IN ACCORDANCE WITH STATE LAWS.
2. TREES TO BE REMOVED ARE MARKED ALL TREES WHICH IN THE OPINION OF THE FIELD ENGINEER CAN BE SAVED, SHALL BE SAVED.
3. A PORTION OF EXCESS EXCAVATED MATERIAL SHALL BE MOUNDED AROUND MANHOLES WHICH EXTEND MORE THAN ONE (1) FOOT ABOVE THE EXISTING GROUND. SUCH MOUNDS SHALL BE CONSTRUCTED WITH A SIX (6) FOOT DIAMETER FLAT TOP WITH 4 TO 1 SIDE SLOPES DOWN TO THE ORIGINAL GROUND. THE ELEVATION OF THE FLAT TOP OF THE MOUND SHALL BE 0.4 FOOT BELOW THE TOP OF THE MANHOLE.
4. EXISTING UTILITIES AND THEIR LOCATIONS, AS SHOWN ON THE PLANS, REPRESENT THE BEST INFORMATION OBTAINABLE FOR DESIGN. LOCATION INFORMATION HAS BEEN OBTAINED FROM THE VARIOUS UTILITY COMPANIES AND IS EITHER FROM COMPANY RECORD DRAWINGS OR COMPANY PROVIDED FIELD LOCATIONS. THE PLAN LOCATIONS SHOWN ARE NOT GUARANTEED. ADDITIONAL EXISTING UTILITIES MAY ALSO BE ENCOUNTERED.
5. ALL STUBS AND PLUGGED PIPES SHALL BE LOCATED WITH GREEN PLASTIC TAPE IN THE SAME MANNER AS RISERS.
6. COST OF EXCAVATION, HAULING, AND DUMPING OF EXCESS EXCAVATION SHALL BE SUBSIDIARY TO THE PROJECT.
7. PRIOR TO LAYING SEWER LINES USING EXISTING STUBS IN EXISTING MANHOLES, THE CONTRACTOR SHALL EXPOSE AND VERIFY THE ELEVATION, GRADE AND ALIGNMENT OF EXISTING STUBS AND NOTIFY THE ENGINEER OF ANY DEVIATION FROM THE PLAN. WHERE CONNECTING TO AN EXISTING MANHOLE THAT DOES NOT HAVE AN EXISTING STUB OR THE STUB IS UNSERVICEABLE DUE TO ELEVATION GRADE OR ALIGNMENT, THE CONTRACTOR SHALL RESHAPE THE EXISTING MANHOLE INVERT TO PROVIDE SMOOTH FLOW. THE COST OF RESHAPING EXISTING MANHOLE INVERTS IS INCIDENTAL TO THE PROJECT.
8. CONTRACTOR SHALL NOTIFY THE FOLLOWING UTILITY COMPANIES PRIOR TO ANY EXCAVATION:

ARKLA GAS COMPANY	942-8350
BELL TELEPHONE	1-316-571-2115
CABLEVISION	262-0661
GAS SERVICE COMPANY	263-7511
KANSAS GAS & ELECTRIC	1-800-344-7233
KANSAS ONE-CALL	524-0491
CITIES SERVICE	316-254-7243
KANSAS GAS SUPPLY	316-681-2081
CONTINENTAL PIPELINE COMPANY	

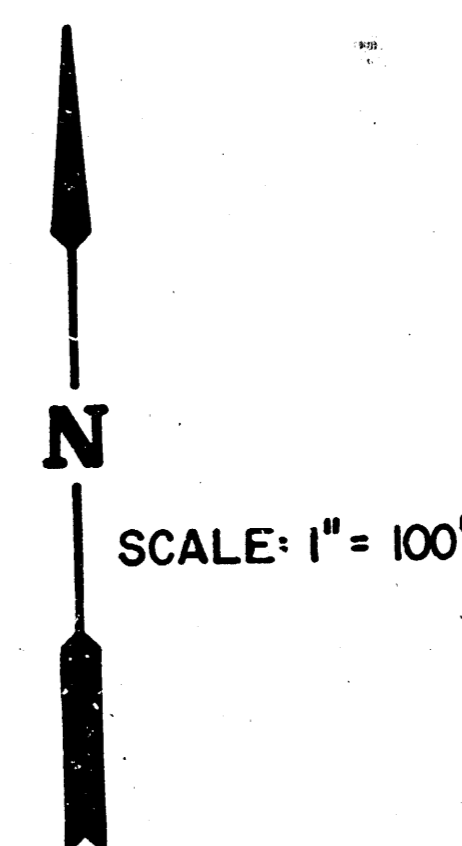
BENCH MARKS

- B.M. #1 = on Northeast side of driveway, Building #800, 3500 North Rock Rd.
Elev. = 204.46'
- B.M. #2 = cut on Northeast corner of concrete Driveway entrance to Storage Units. cut is 60' East and 246' North of the West & corner of Section 32, T 26 S, R 2 E.
Elev. = 202.96'

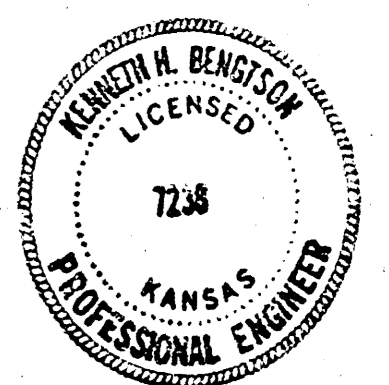


INDEX TO DRAWINGS

SHEET NO.	DESCRIPTION
1	Title Sheet
2	Line 1
3	Line 2
4	Final Plat

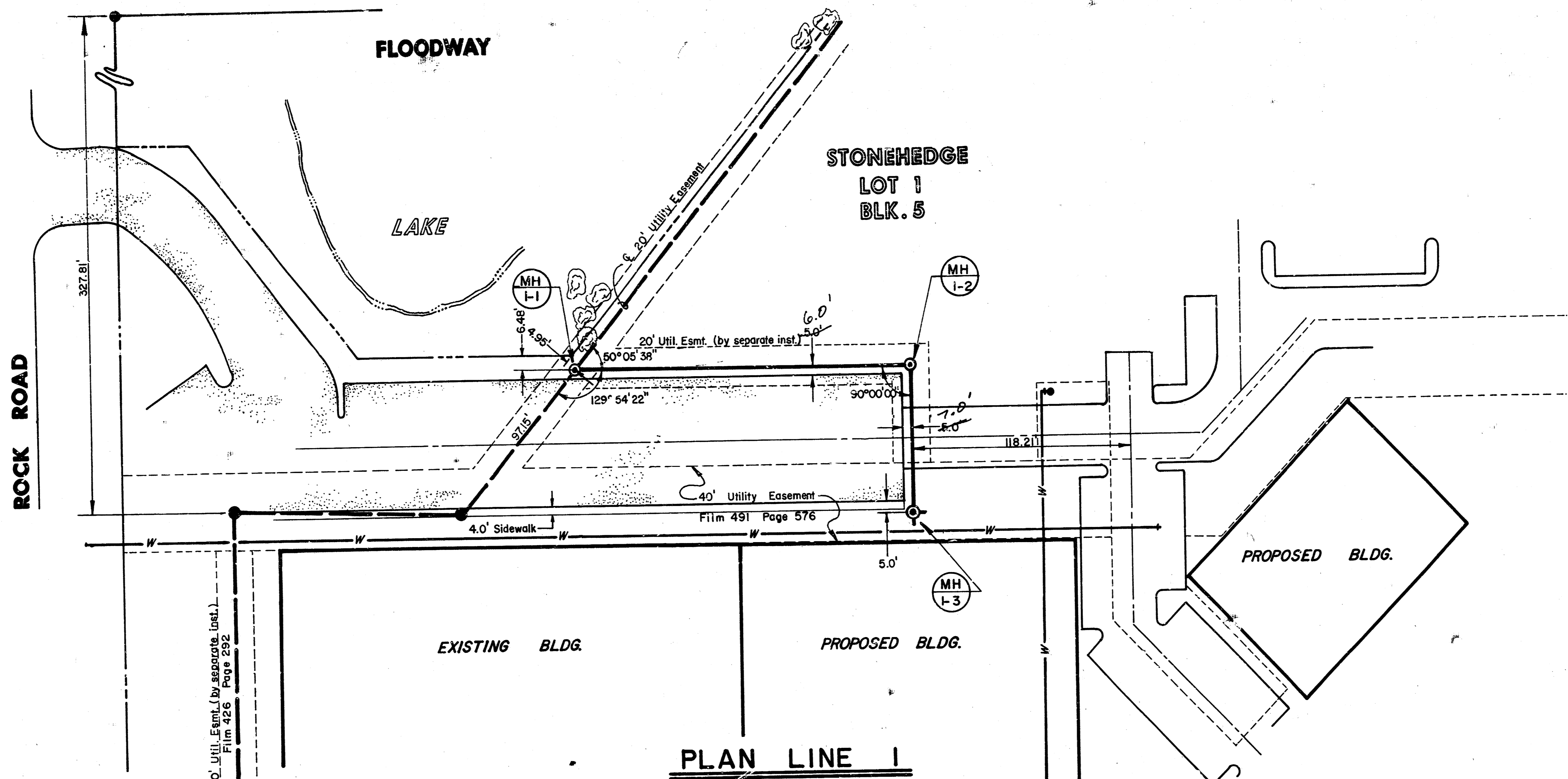


*AS BUILT
RDC
3-87*

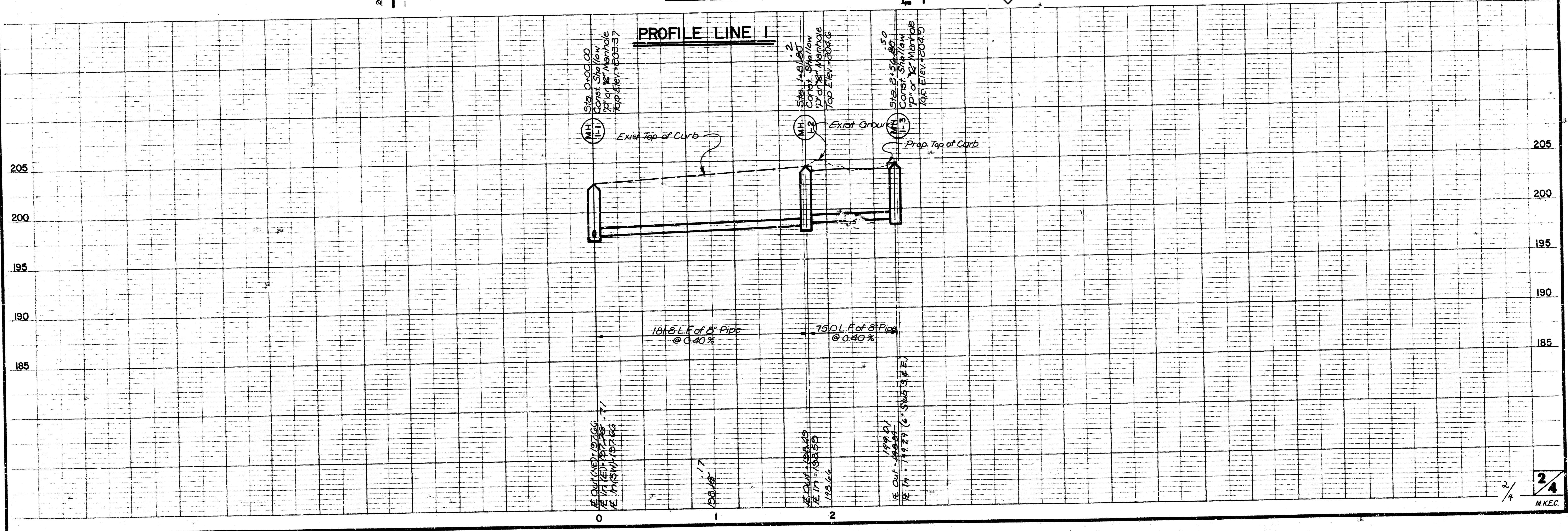
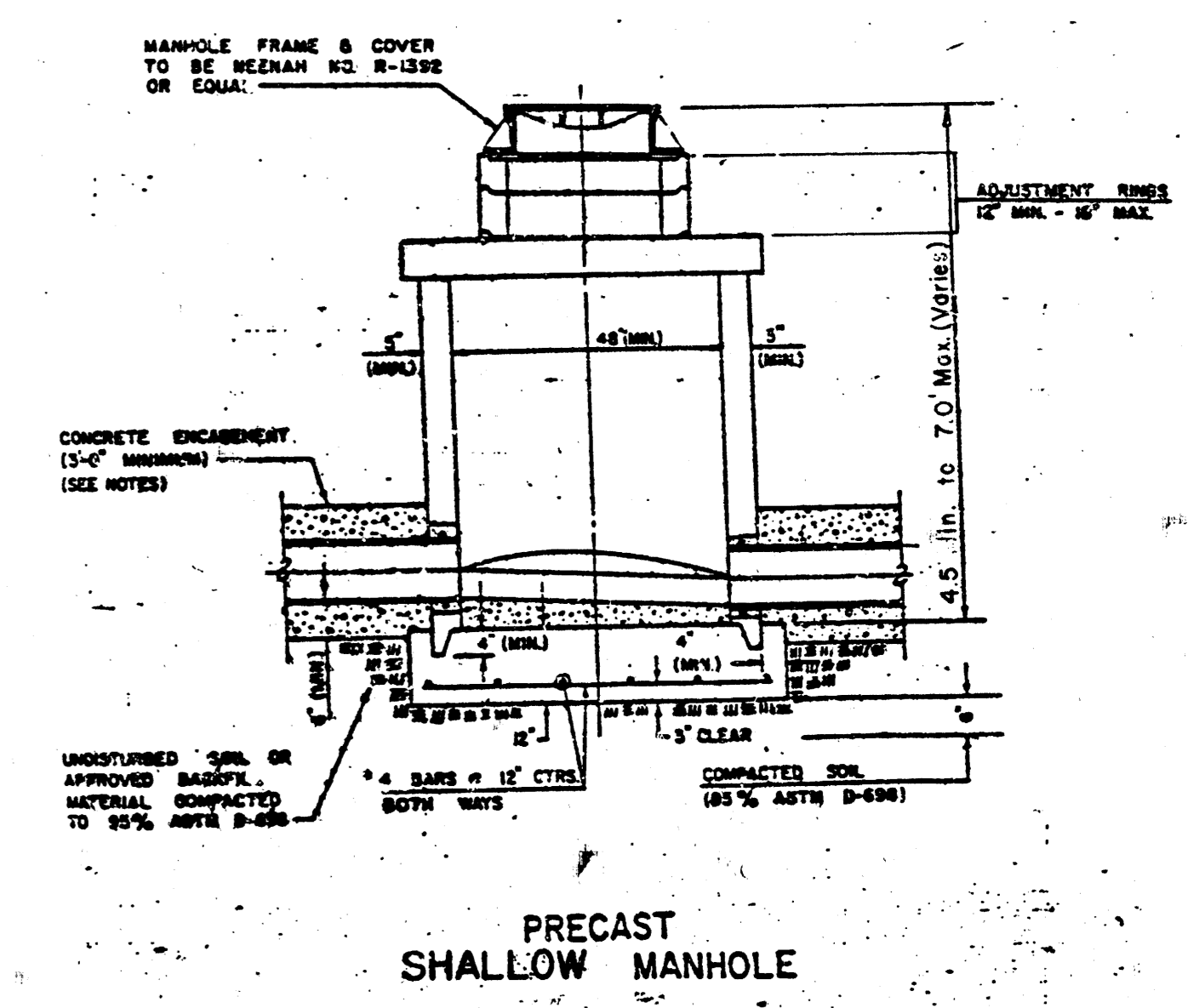
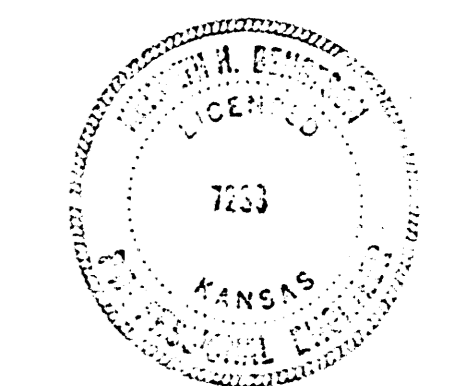


	NORTHROCK BUSINESS PARK	Design: KKL
	SANITARY SEWER PLANS	Drawn by: DDG
MID-KANSAS ENGINEERING CONSULTANTS PA 3500 NORTH ROCK ROAD BUILDING #800 WICHITA, KANSAS 67226		Checked by: DSS
		Date: 11-17-86
682-6561		Sheet: 1 of 4

NORTHROCK BUSINESS PARK
 LAT. 38 MAIN 7 SAN. SEW. NO. 23
 PROJ. NO. 46876-245-81624-000-000-001



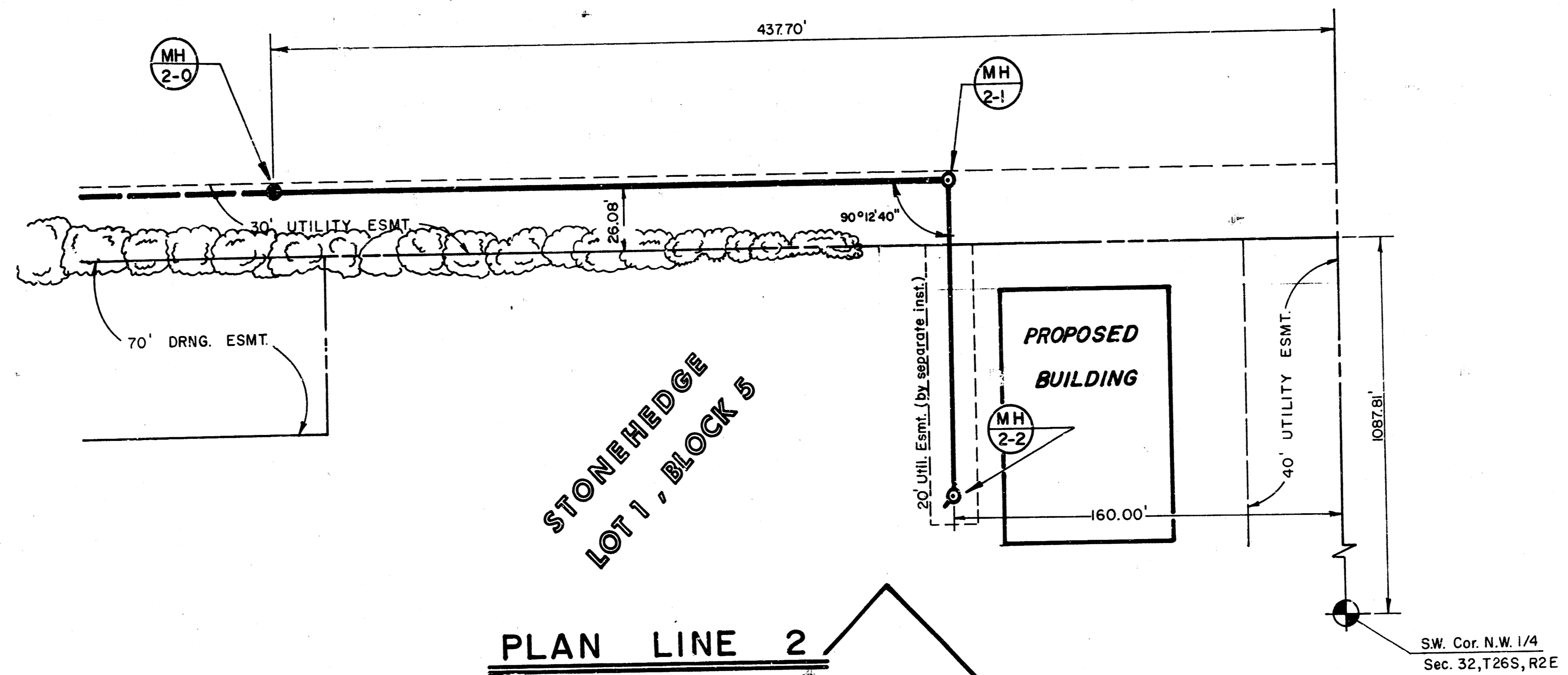
N
 SCALE:
 1" = 40', Horiz.
 1" = 5', Vert.



COMOTARA
 INDUSTRIAL
 PARK SECOND



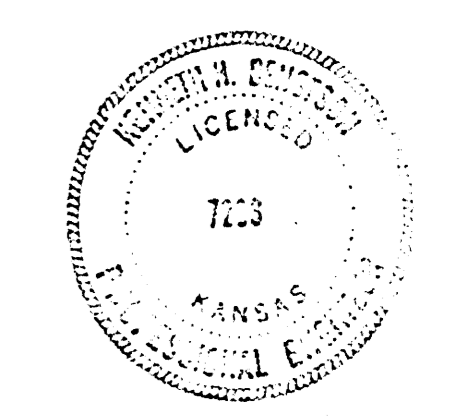
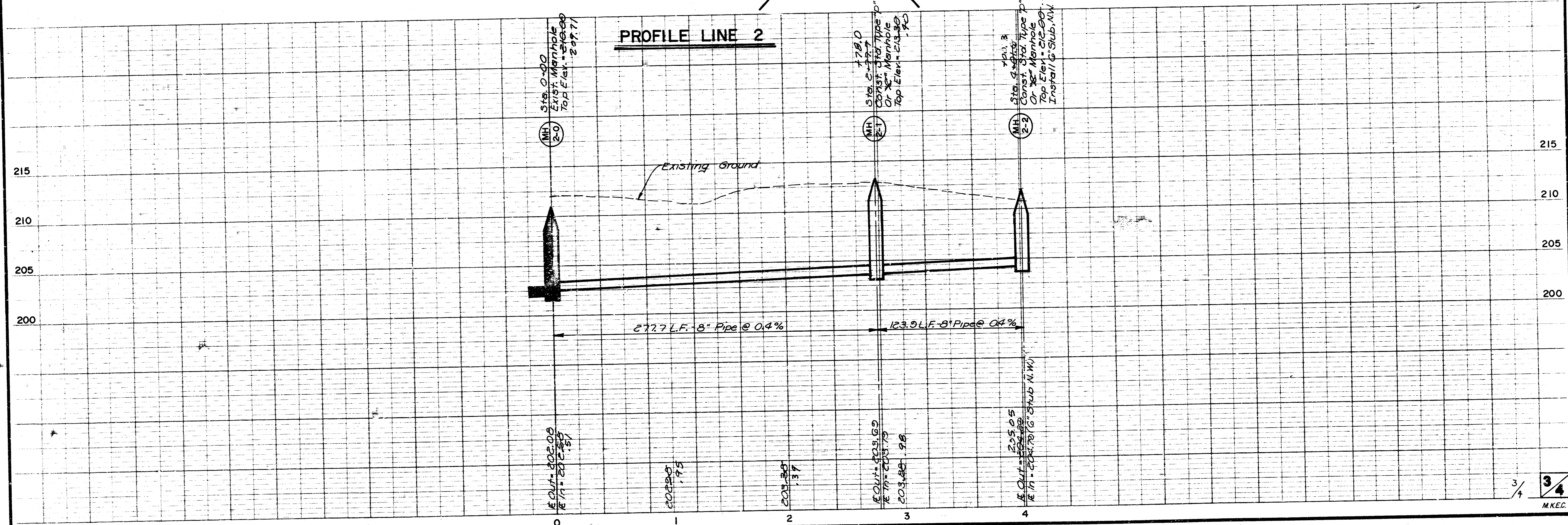
Scale: 1" = 40' Horiz.
 1" = 5' Vert.



PLAN LINE 2

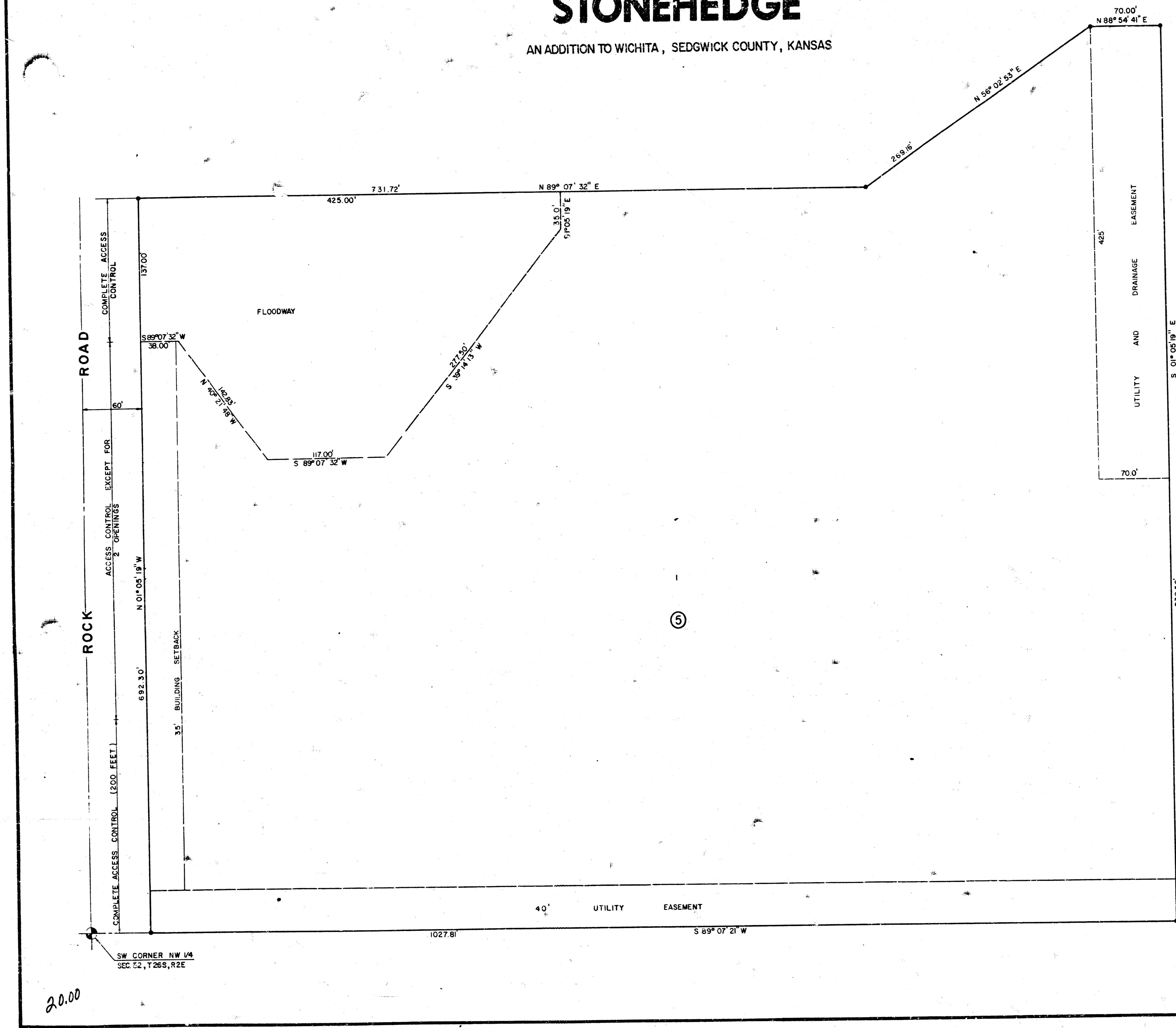
PROPOSED BUILDING

PROFILE LINE 2



FINAL PLAT OF STONEHEDGE

AN ADDITION TO WICHITA, SEDGWICK COUNTY, KANSAS



This plat of "Stonehedge" has been submitted to and approved by the Wichita-Sedgwick County Metropolitan Area Planning Commission, Wichita, Kansas.

Dated this 23rd day of OCTOBER, 1980.

Wichita-Sedgwick County Metropolitan Area Planning Commission

Michael J. Savina, Chairman
Michael J. Savina

Robert A. Lakin, Secretary
Robert A. Lakin

This plat approved and all dedications shown hereon, if any, accepted by the City Commission of the City of Wichita, Kansas this 23rd day of DEC, 1980.

R. C. Brown, Mayor
R. C. BROWN

Donald C. Gistick, City Clerk
Donald C. Gistick

This plat approved and all dedications shown hereon, if any, accepted by the Board of County Commissioners of Sedgwick County, Kansas this 31 day of December, 1980.

Everett Patrick, Chairman
Everett Patrick

Tom Scott, Commissioner
Tom Scott

Donald E. Bragg, Commissioner
Donald E. Bragg

Attest: Dorothy K. White, County Clerk
Dorothy K. White

Entered on Transfer Record this 31 day of December, 1980.

Dorothy K. White, County Clerk
Dorothy K. White

State of Kansas ss:

County of Sedgwick
This is to certify that this instrument was filed for record in the Register of Deeds Office at 11:45 A.M. o'clock on the 5TH day of JANUARY, 1981.

Bette F. McCart, Register of Deeds
Bette F. McCart

Pat Kettler, Deputy
Pat Kettler

#521634

SW CORNER LOT 13
COMOTARA IND. PARK 2nd ADD.

20.00