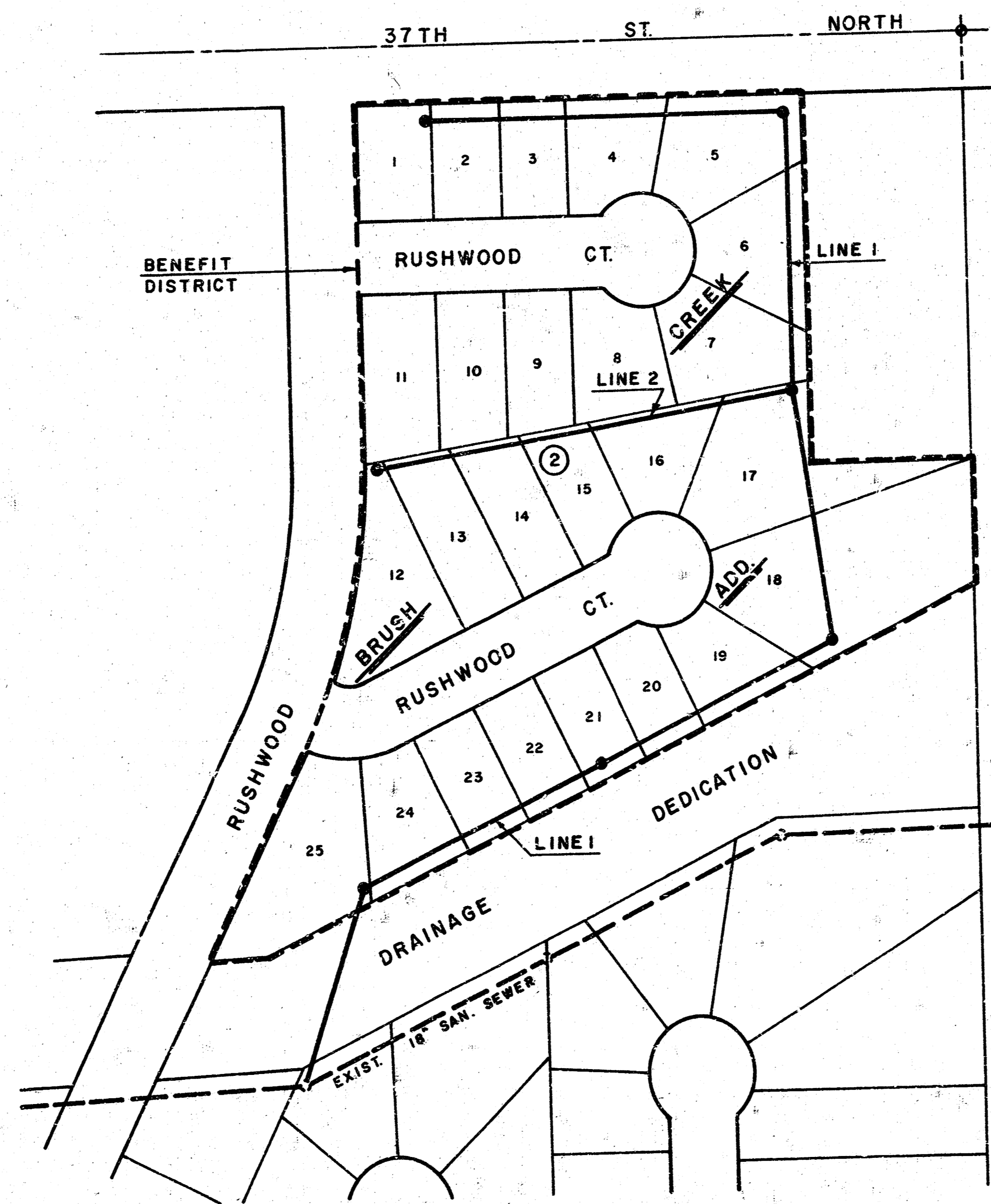


LATERAL 4, MAIN 9 S.S. NO. 23

Project no. 468-76-245-81322-000-000-001

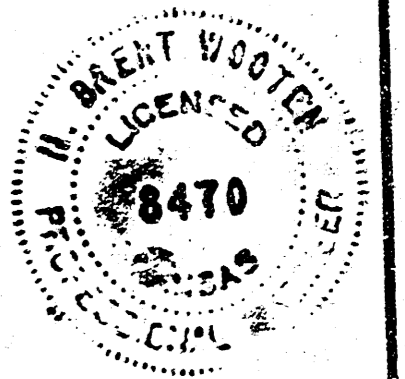
CITY OF WICHITA, KANSAS
MIKE LINDEBAK CITY ENGINEER

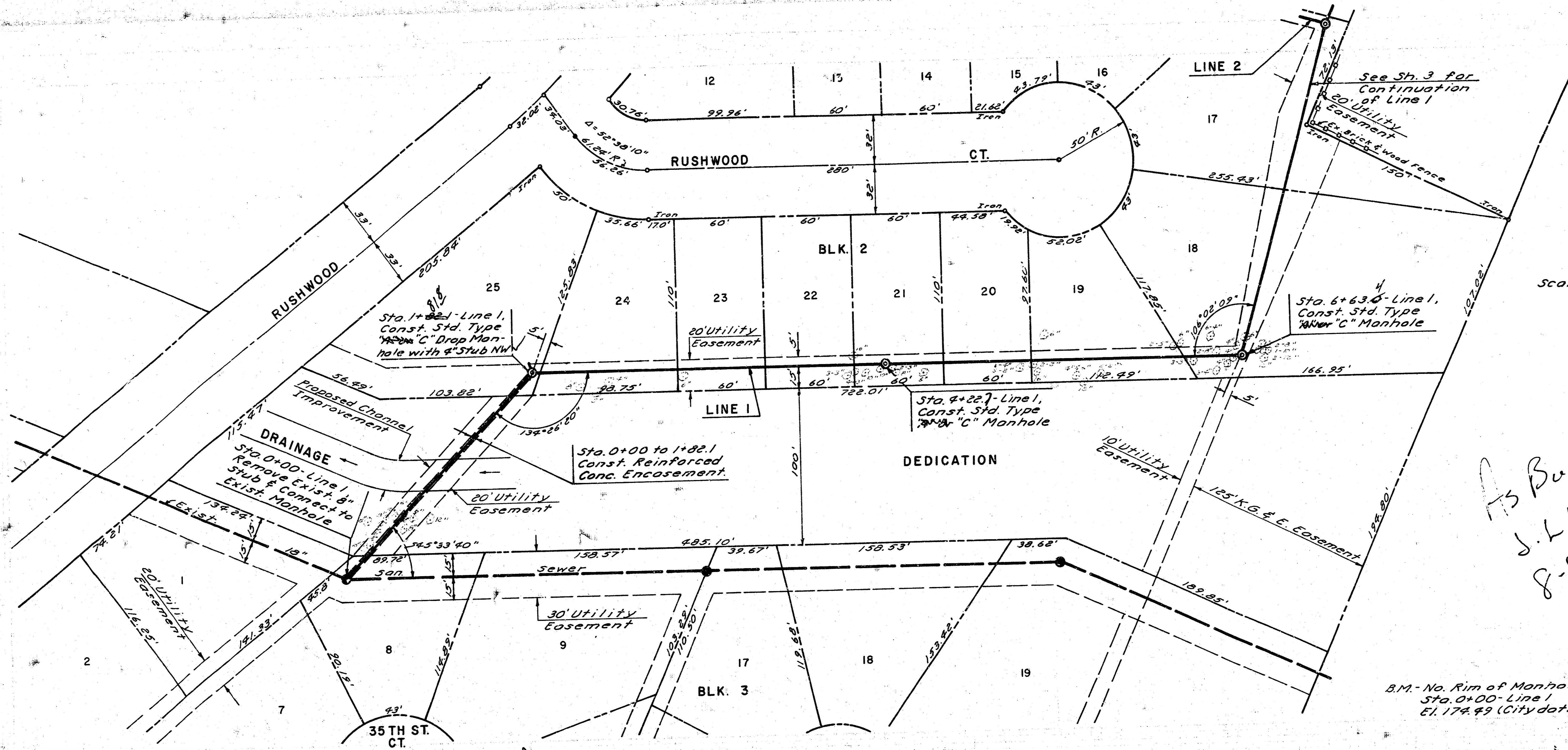
*As Built
S.H.
8-84*



LOCATION MAP

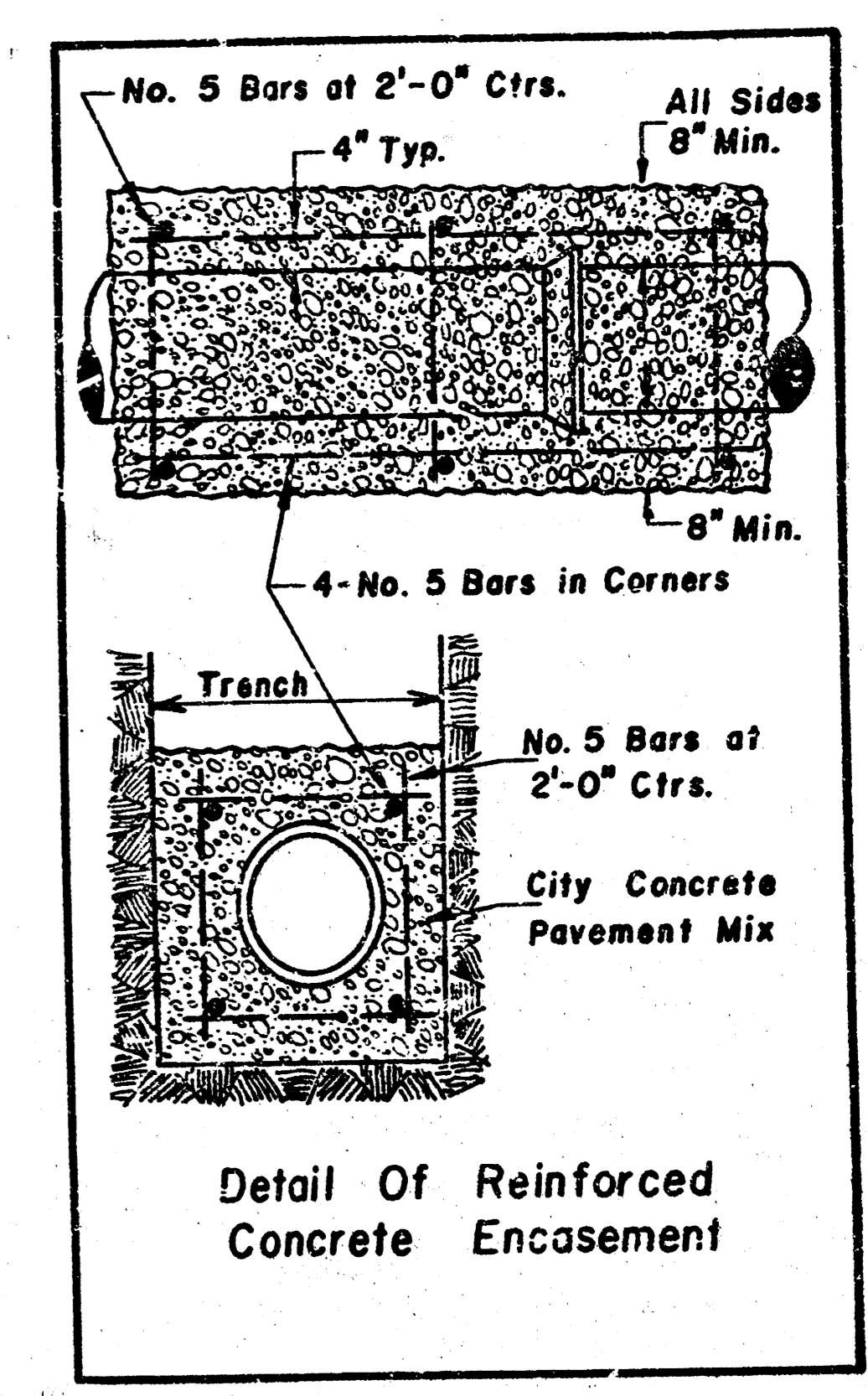
The contractor shall be responsible for preserving property irons. The contractor shall be required to re-establish any property irons which are damaged or destroyed by his construction operations. Such irons shall be re-established by a licensed land surveyor or a professional engineer in accordance with state laws.
The contractor shall contact the Telephone Company for the verification of their line location along 37th St. No.





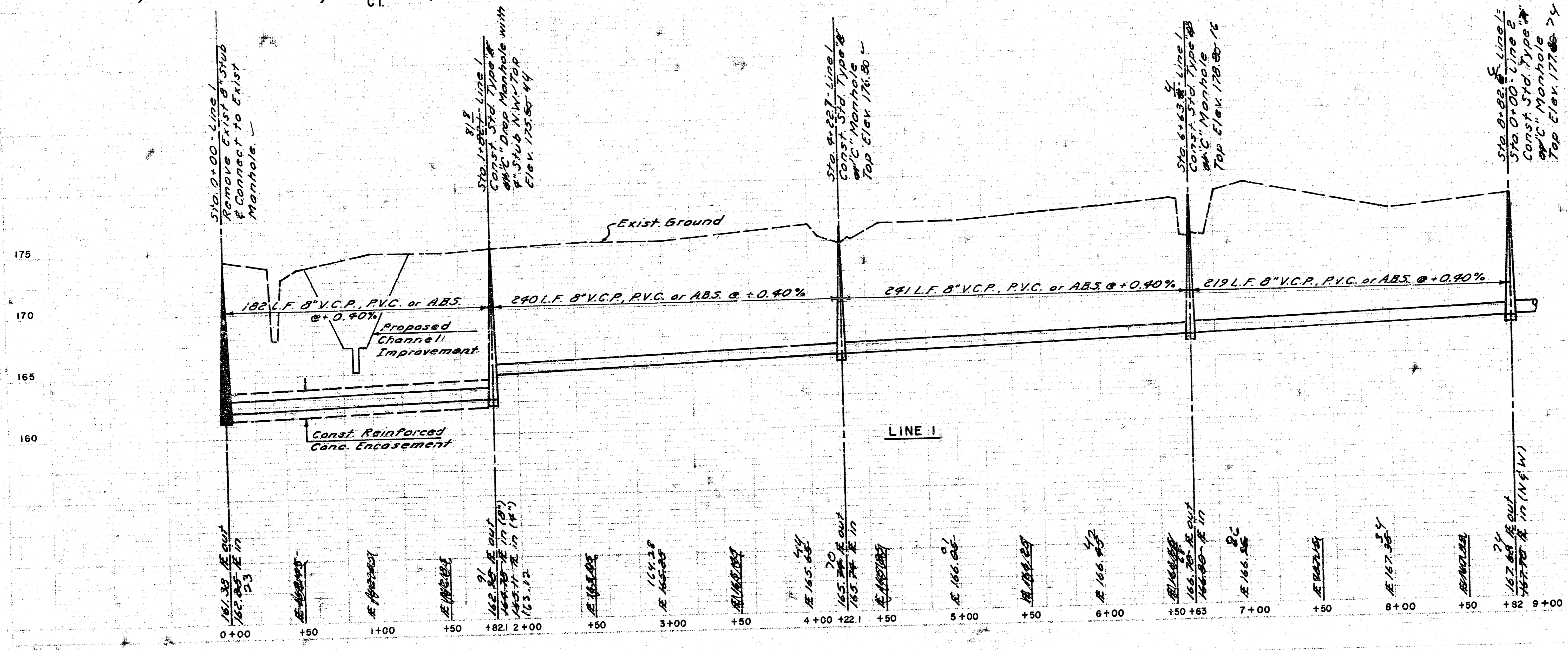
Scale: Hor. 1" = 40'
Ver. 1" = 5'

*As Built
J.L.L.
8-84*

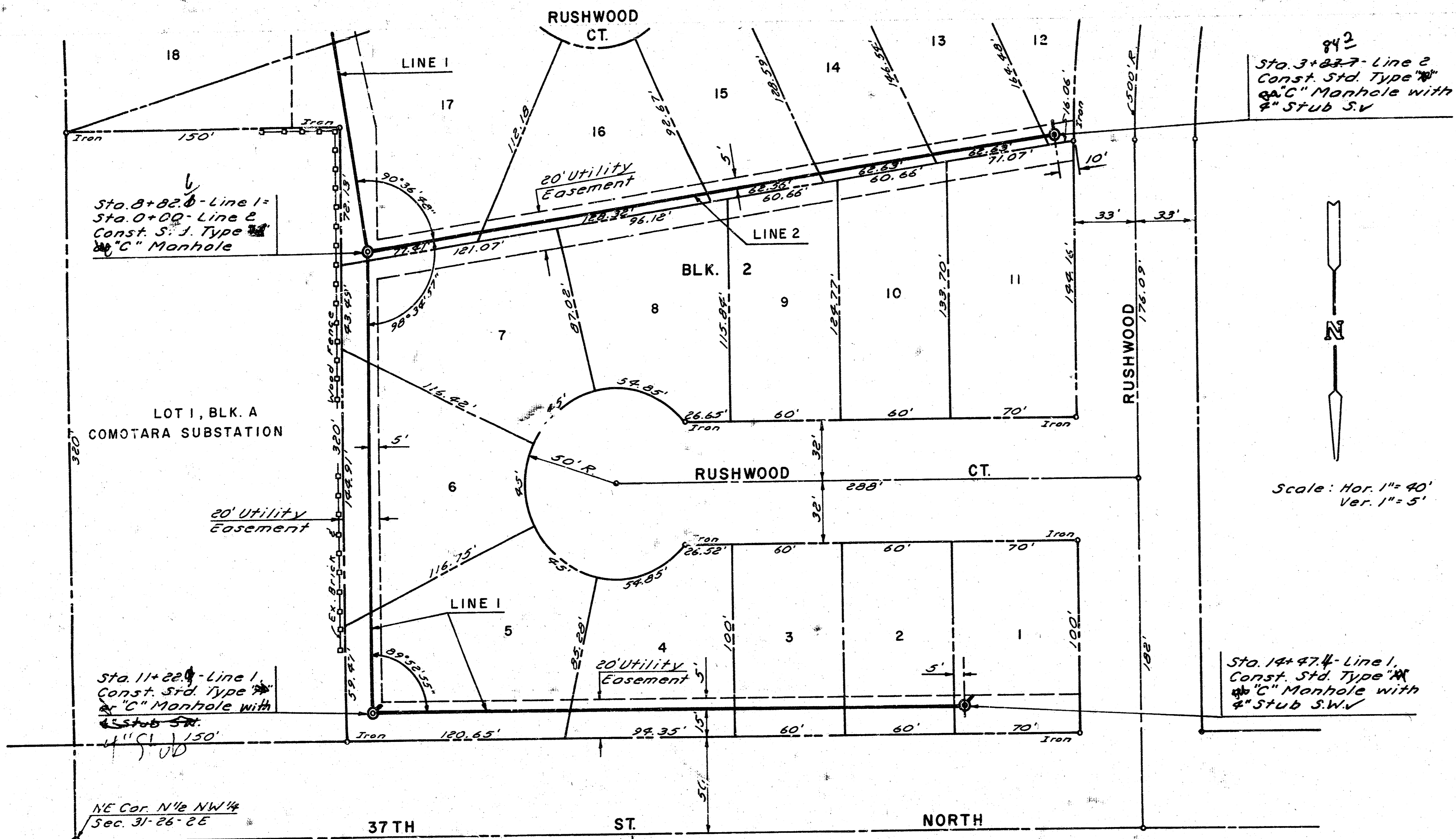


B.M. - No. Rim of Manhole
Sta. 0+00 - Line 1
El. 174.49 (City datum)

B.M. - City disc 70' W. & 39' N.
& 37th No. & Woodlawn
El. 186.17

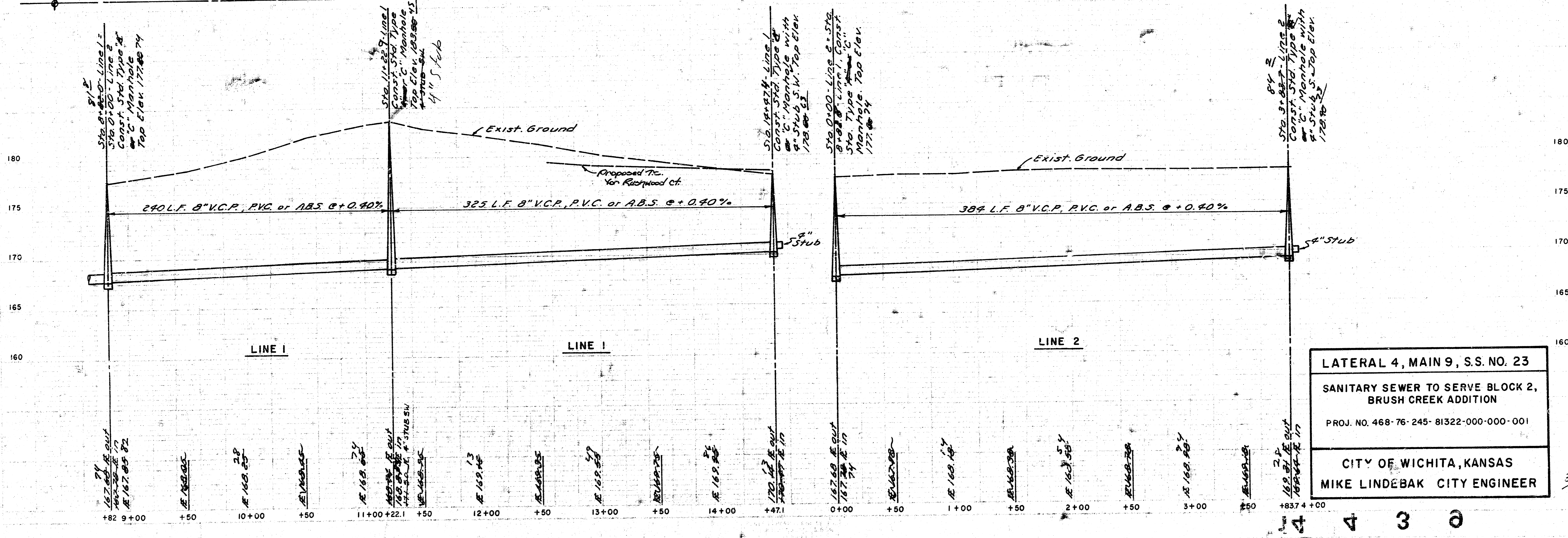


LATERAL 4, MAIN 9, S.S. NO. 23
SANITARY SEWER TO SERVE BLOCK 2,
BRUSH CREEK ADDITION
PROJ. NO. 468-76-245-81322-000-000-001
CITY OF WICHITA, KANSAS
MIKE LINDEBAK CITY ENGINEER



B.M. - RR Spk in Power Pole
 164.71' ± 29' S, E 37th
 † Rushwood - El. 181.28 (City datum)

As Built
 J.L.L.
 8/84



LATERAL 4, MAIN 9, S.S. NO. 23
 SANITARY SEWER TO SERVE BLOCK 2,
 BRUSH CREEK ADDITION
 PROJ. NO. 468-76-245-81322-000-000-001
 CITY OF WICHITA, KANSAS
 MIKE LINDEBAK CITY ENGINEER