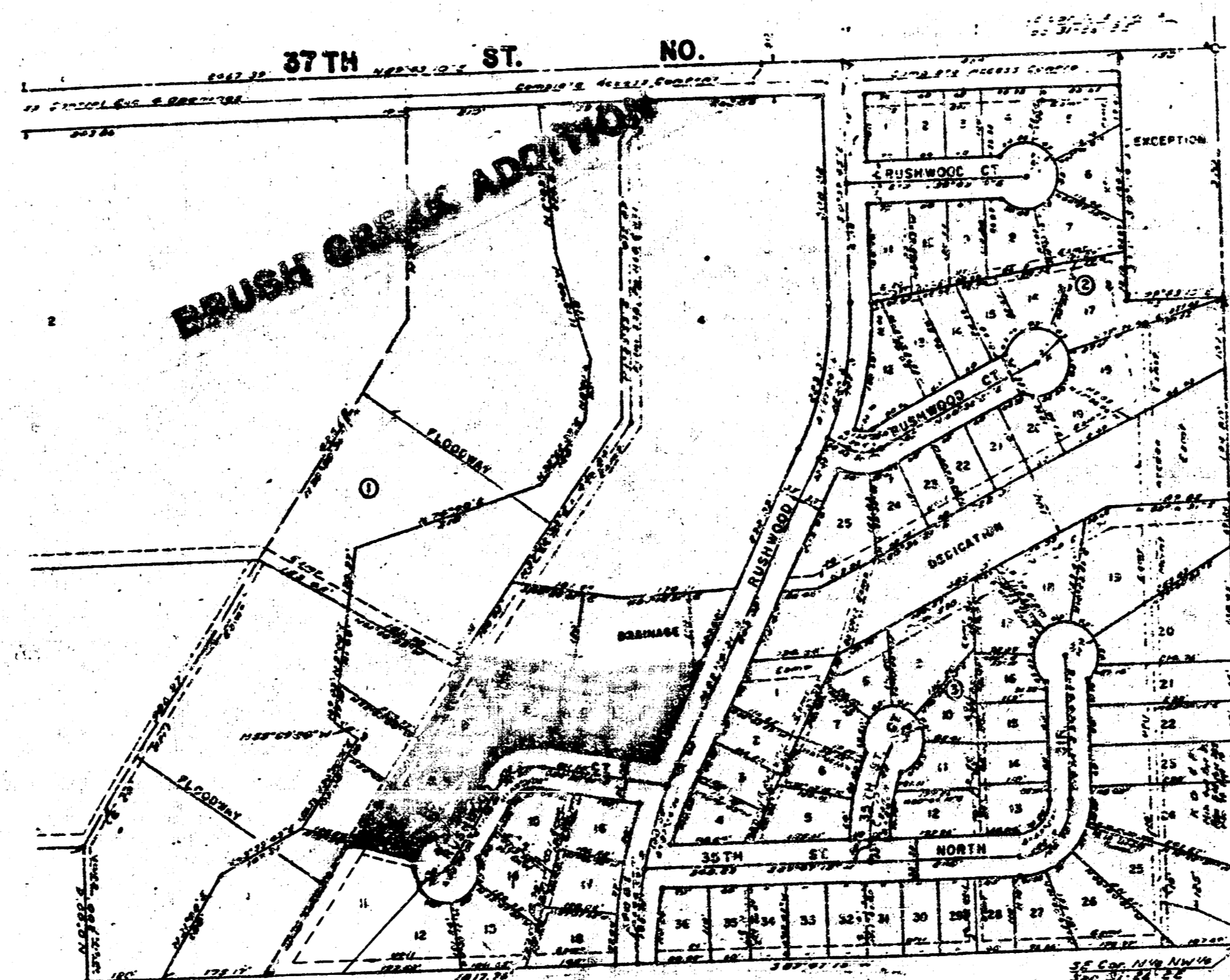


LATERAL 13, MAIN 9, SS-23

PROJECT NO.
468-76-245-81395 -000-000-001

*As Built
8-88
10-85*



BENEFIT DISTRICT

GENERAL NOTE

The contractor shall be responsible for preserving the property irons. The contractor shall be required to re-establish any property irons which are damaged or destroyed by his construction operations. Such irons shall be re-established in accordance with state laws.

Contractor shall co-ordinate the construction of the sanitary sewer with the construction of the water lines, the streets and the storm sewers scheduled for this location.

CITY OF WICHITA, KANSAS
MIKE E. LINDEBAK CITY ENGINEER

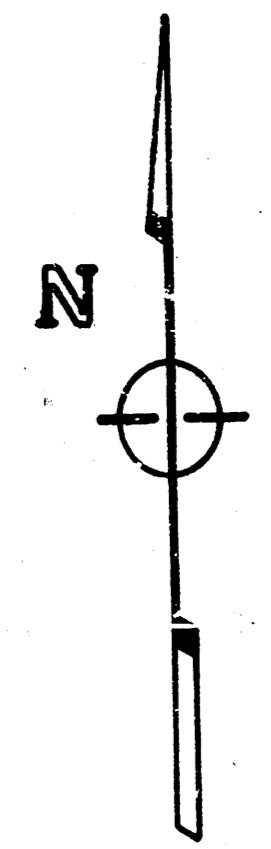
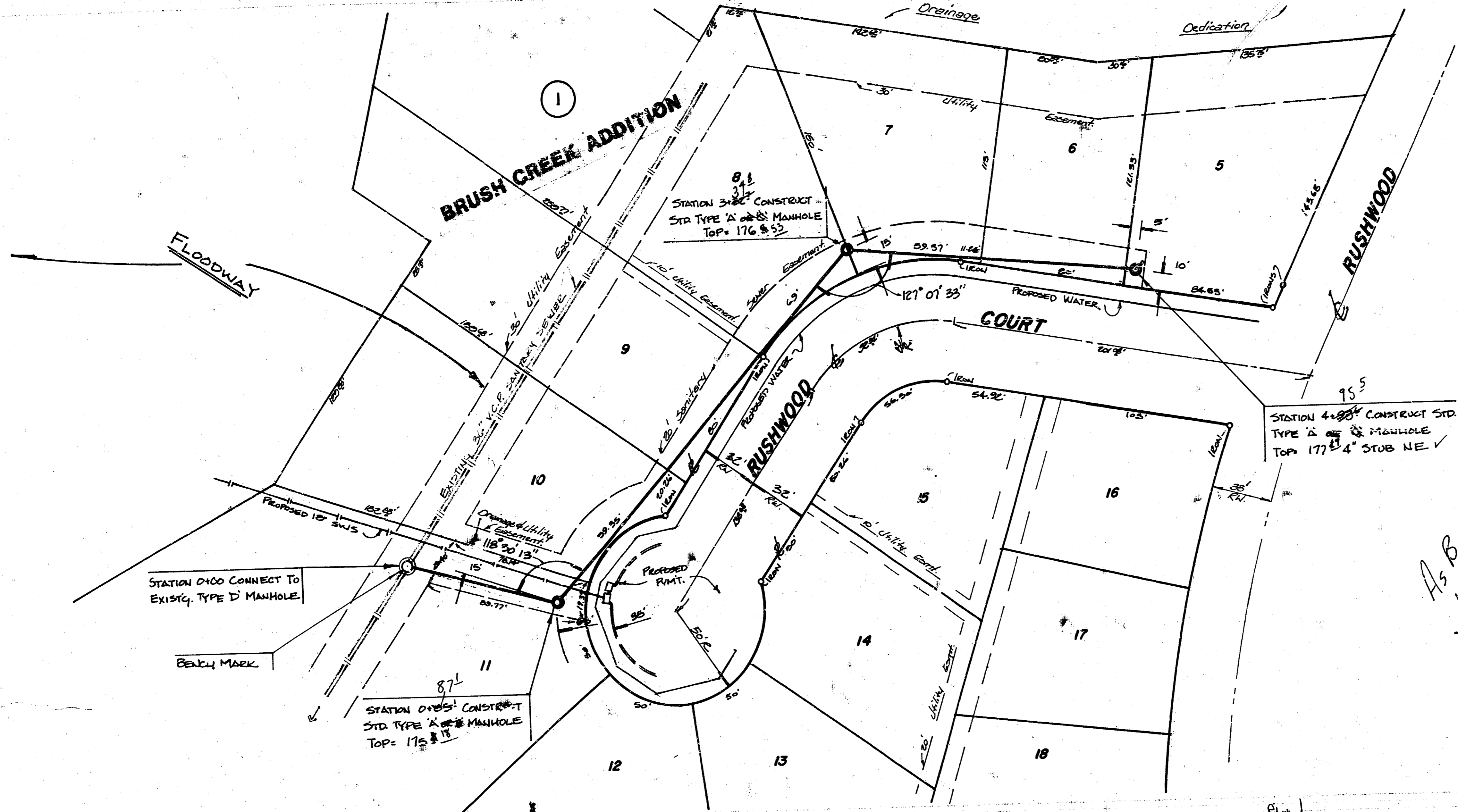


JANUARY 1985

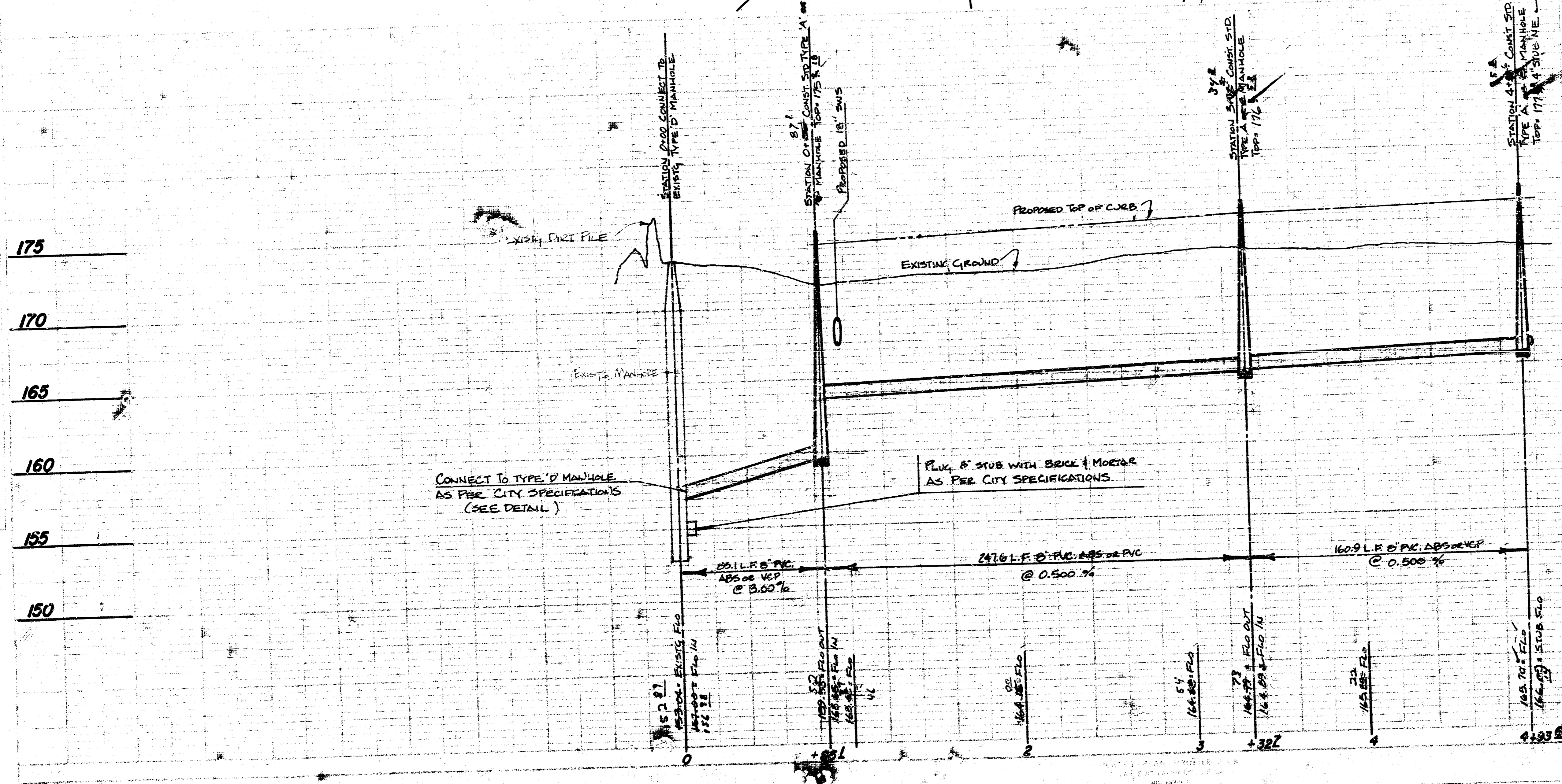
BAUGHMAN COMPANY, P.A.
SURVEYING & ENGINEERING
316/262-7271 • 330 LAURA • WICHITA, KANSAS 67211

FILMED FROM THE BEST

BENCH MARK: RIM OF MANHOLE @ STA. 0+00, LOT 11, BRUSH CREEK ADDITION
ELEV. = 175.50 CITY DATUM



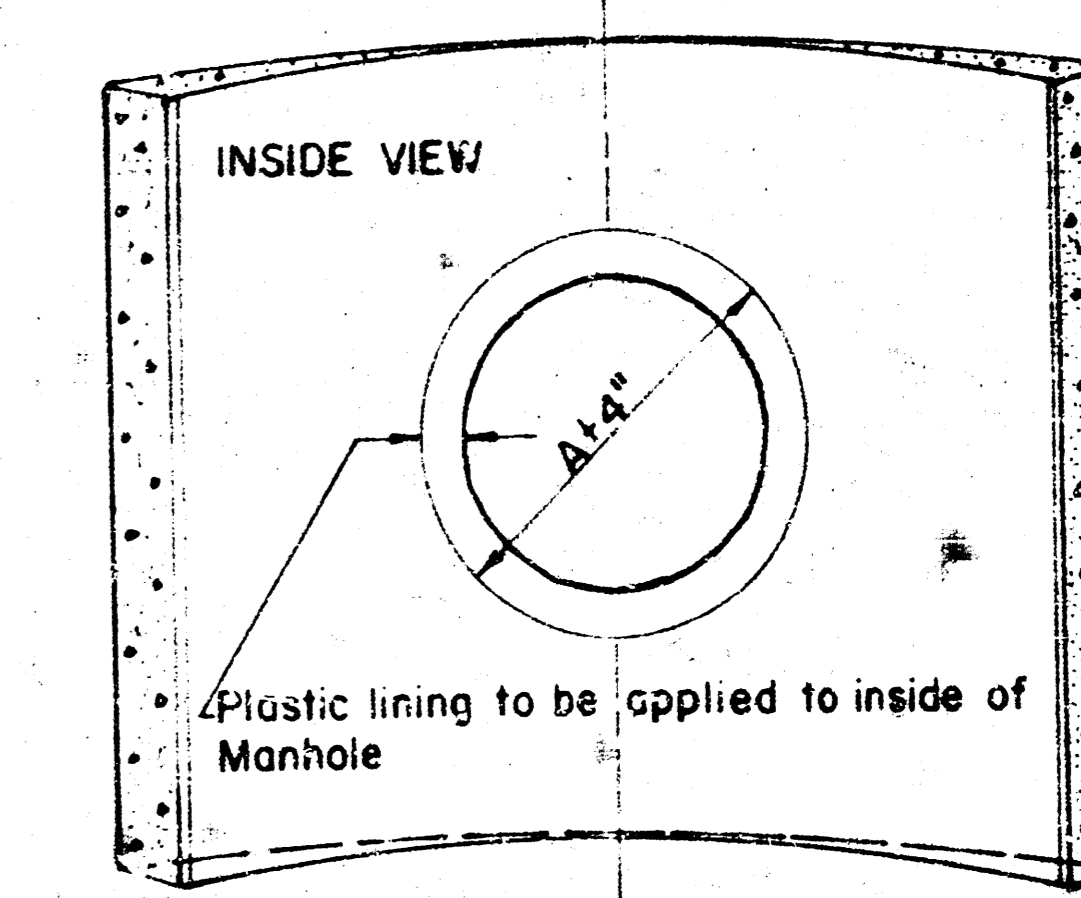
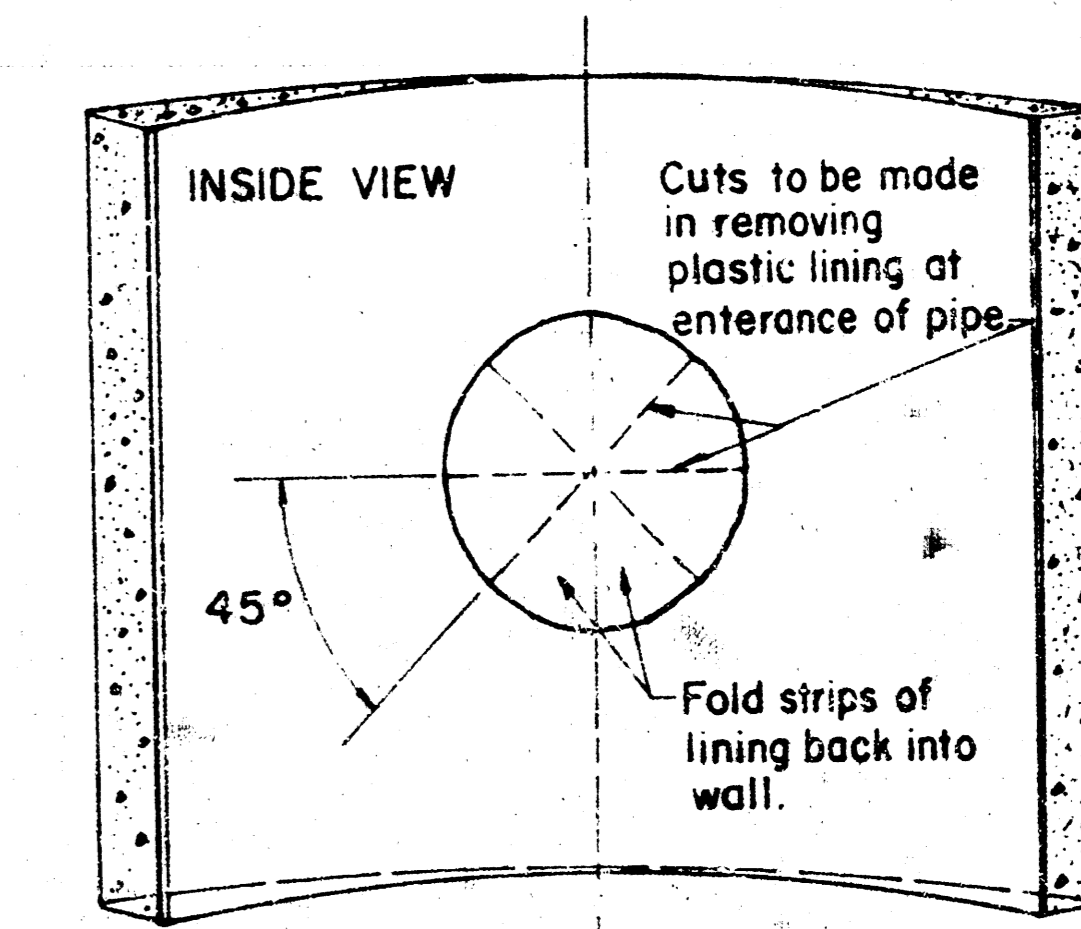
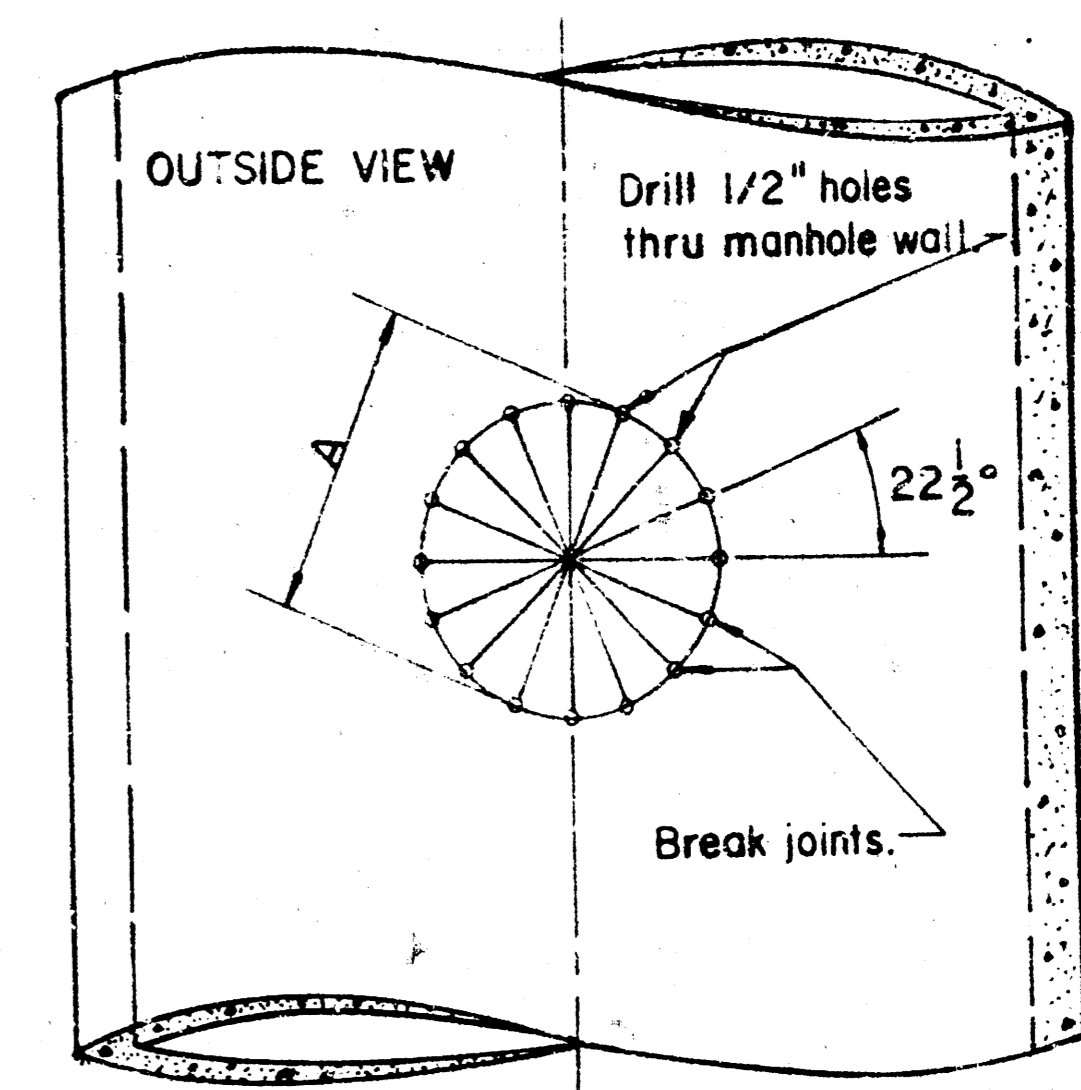
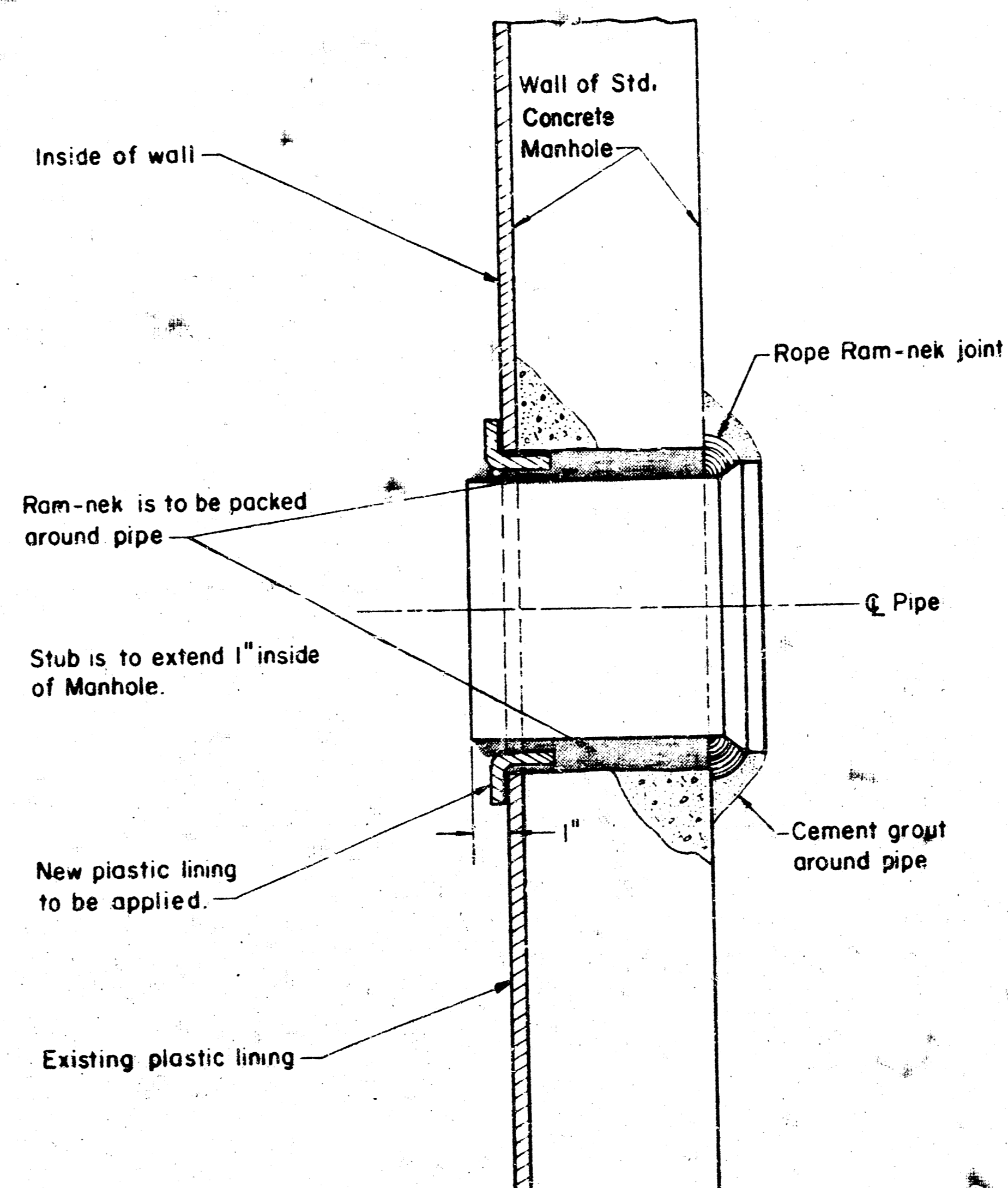
SCALE: 1" = 40' HORIZ.
1" = 5' VERT.



LATERAL 13, MAIN 9, SS 23
TO SERVE LOTS 5-11, BLOCK 1,
BRUSH CREEK ADDITION
CITY OF WICHITA, KS
PROJ. NO. 499-76-245-181345-000-001

BAUGHMAN COMPANY, P.A.
SURVEYING & ENGINEERING
314/263-7321 • 330 LAURA • WICHITA, KANSAS 67211

PRINTED FROM THE BEST



A = OUTSIDE DIAMETER OF PIPE + 2"

DRAWN: Oct. 1978
DETAIL
 PIPE CONNECTION TO
 TYPE D CONCRETE MANHOLE
 CITY OF WICHITA, KS
 PROJECT NO. 488-76-245-81395-000-000-001

FILMED FROM THE BEST COPY