

SANITARY SEWER TO SERVE Armstrong's Addition

Lots 122, 124, 126 & 128

Private Project Number: 1304 PPS (607861)

CITY OF WICHITA, KANSAS

Neil Cable, P.E. City Engineer

December 2002

Bench Marks:

B.M. #1- "□" in sidewalk approximately 1.9 feet West & 39.0 feet South of the Northwest corner of Lot 128, Armstrong's Addition.

Elevation = 109.24 (City Datum)

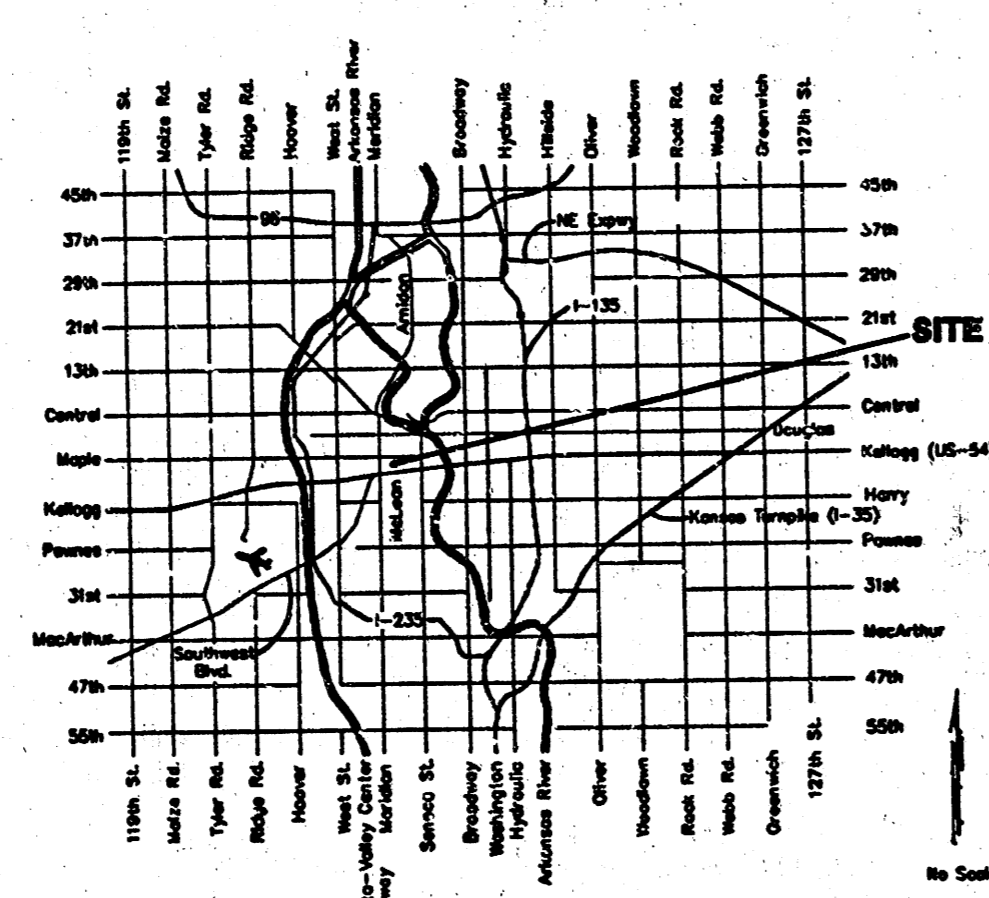
B.M. #2- Glenn & Maple: City of Wichita Bench Mark Brass rod in concrete post on Southwest corner of intersection. 28.00 feet West of South property line of Maple & center line of Glenn. 12.00 feet North of South property line of Maple & center line of Glenn. 23.00 feet South of center line of Maple. 3.30 feet North of North face of walk.

Elevation = 109.14 (City Datum)

Index

Cover/Plan/Profile Sheet	1
Manhole Detail	2
Ring & Cover Detail	3
BMP Erosion Detail	4
Copy Of Plat	5

Location Map



Legal Description

Lots 122, 124, 126 & 128 Armstrong's Addition, Wichita, Sedgewick County, Kansas

APPROVED AS NOTED BY CITY ENGINEER OF WICHITA

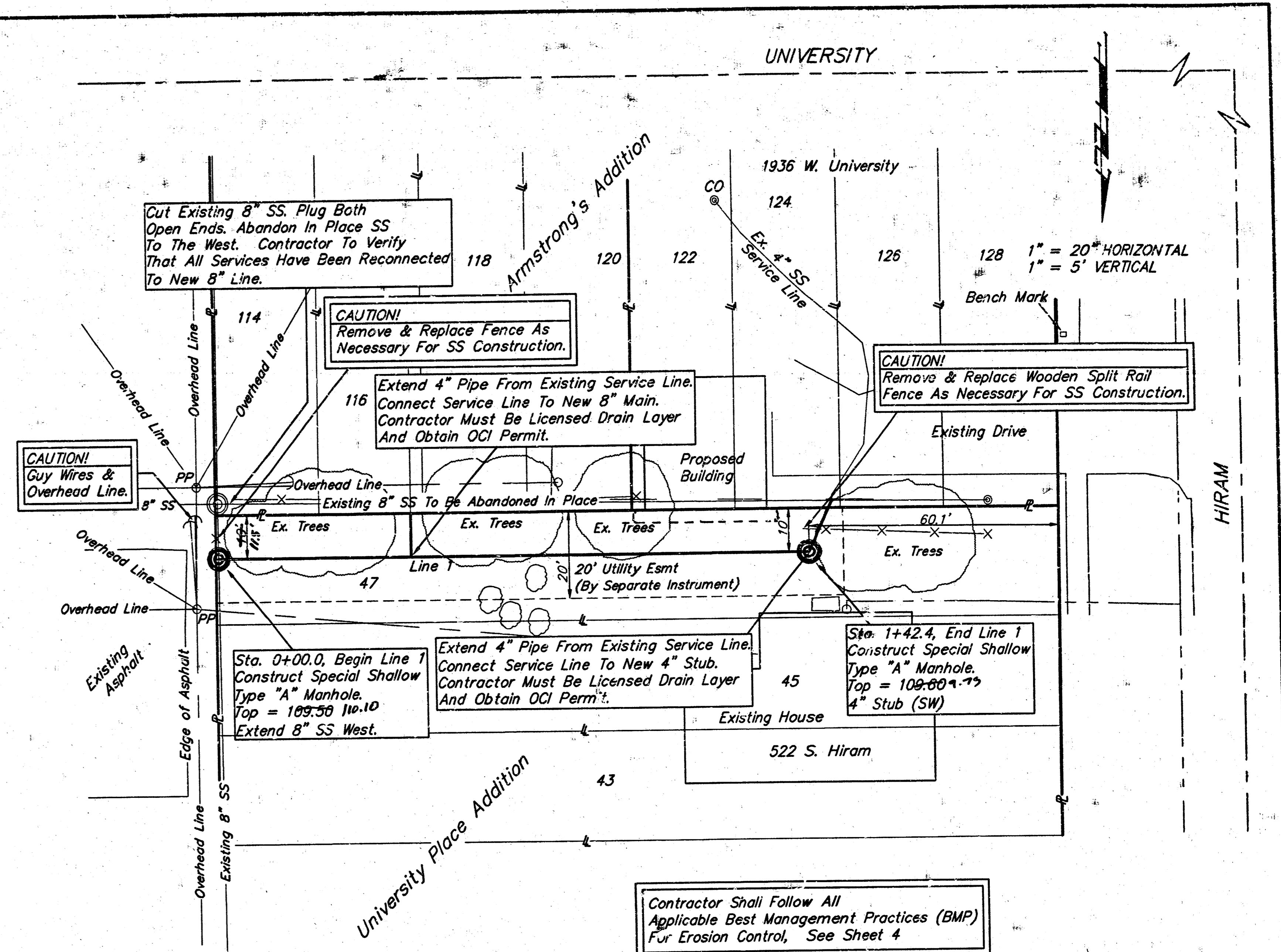
Sanitary Sewers *VRH 12/1/02*

NOTE TO CONTRACTORS

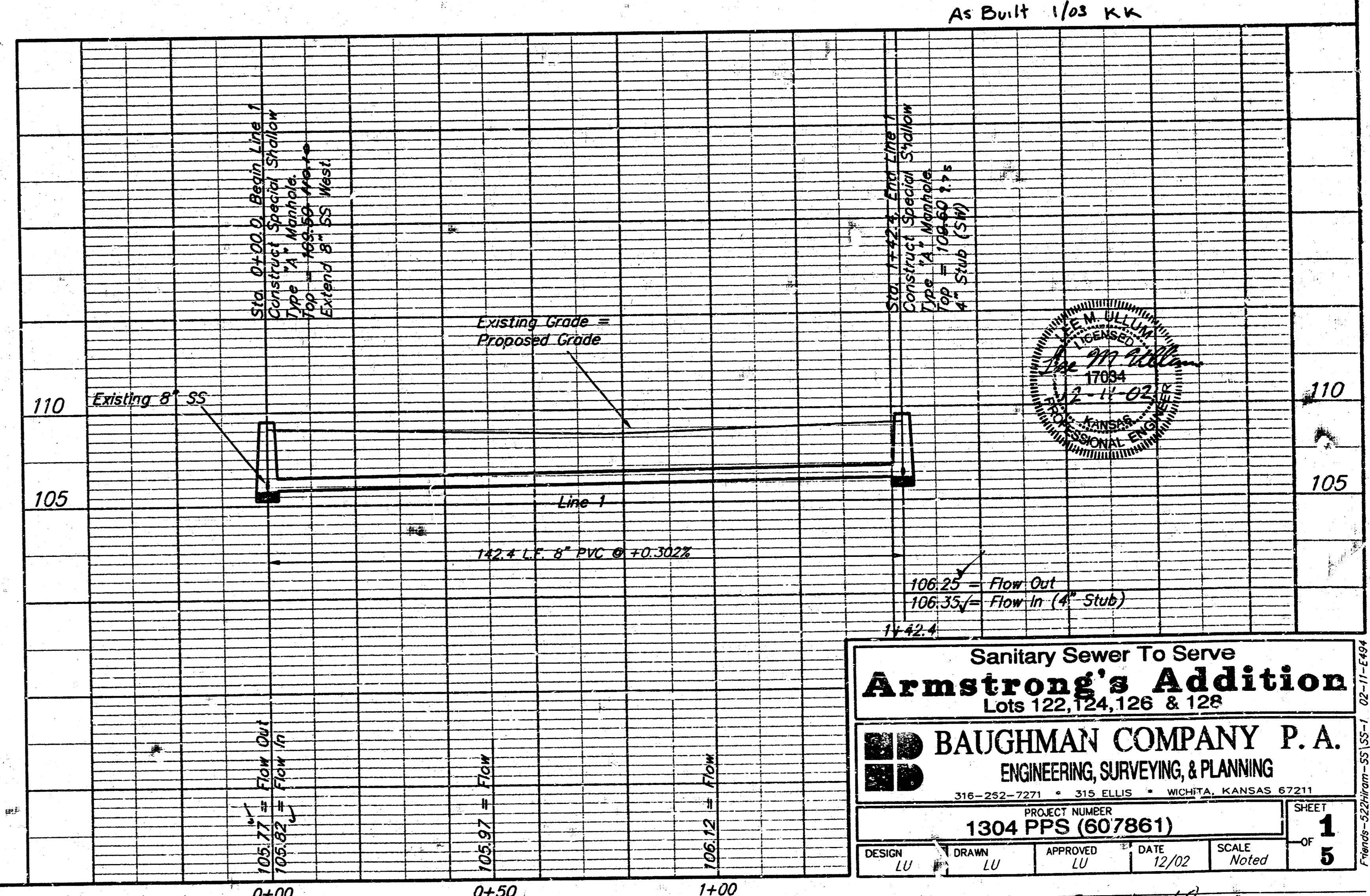
Installation, inspection and testing for this project is to be provided by a Licensed Consulting Engineering Firm under contract with the Owner/Developer. Said inspection to be in accordance with the City of Wichita standard construction engineering practices and certified by a Licensed Professional Engineer. No work shall be performed in dedicated easements or public right-of-way by the Contractor without such inspection nor shall any work be commenced without written authorization by the City Engineer. All Construction and Materials shall comply with the City of Wichita Specifications and Standards (on file and available in the City Engineer's Office).

General Notes

- Contractor will be required to provide notice to utility companies a minimum of forty-eight (48) hours prior to any excavation, as follows:
Kansas One-Call 6E7-2470
The Contractor must notify the following in case of an emergency:
Cox Communications 262-4270
Kansas Gas Service Company 1-208-492-4950
Westar Energy (Electric) 383-8650
Aquila Energy (Gas) 1-800-303-0357
Southwestern Bell Telephone Company 1-800-298-8313
City of Wichita Water Department 262-4908
City of Wichita Sewer Department 262-4024
- All disturbed R/W areas not intended for pavement or sidewalk construction shall be seeded with Kansas Premium Fescue Blend at a rate of 8 lb./1000 Sq. Ft., fertilized with a 16-20-6 ratio at a rate of 4 lb./1000 Sq. Ft., and mulched with Prairie Hay at a rate of 92 lb./1000 Sq. Ft. Mulch shall be "batted" with forks or punched into soil to reduce loss due to wind.
- Utility service lines, poles, valve boxes, meters, et cetera are to be adjusted as necessary by others prior to construction unless the plans specifically call for their adjustment by the Contractor or unless the plans specifically identify a utility to be adjusted by its owner during construction. Existing utilities and their location, as shown on the plans, represent the best information obtainable for design and shall be field verified. The contractor will be required to work around existing utilities within the right-of-way which do not conflict with proposed construction.
- The Contractor shall be responsible for maintaining continuous flow of sewage through construction. Contractor's proposed method for maintaining sewage flow shall be approved by the Engineer. Cost of maintaining flow of sewage through construction will not be paid for directly and this cost shall be considered as subsidiary to the other pay items of work.
- Rubble from the removal of miscellaneous structures and excess excavation which is to be wasted shall be disposed of on sites to be provided by the Contractor. These sites shall be approved by the Engineer as to suitability, appearance and site location. Locations that, in the opinion of the Engineer, will leave an unsightly appearance will not be approved. All disposal sites must be approved by the Kansas Department of Health and Environment. Material either stockpiled or disposed of in a flood plain would require a Kansas State Board of Agriculture permit. Any material dumped in waters of the United States or wetlands is subject to U.S. Corps. of Engineers permitting regulations. Any material buried or stockpiled beyond approved construction limits would require additional archaeological investigations unless buried in a previously approved borrow location.
- Properties within the project limits may have underground sprinkler systems which conflict with new construction. Contractor will be required to remove such improvements should they not be removed by their owner at the time of construction. The Contractor will be required to salvage all sprinkler heads and/or valves and give such material to their owner. Portions of underground sprinkler systems not in conflict with new construction shall be protected from damage and shall remain in place. All work in connection with underground sprinkler systems shall be considered as subsidiary to the contract pay items of work.
- Trees and shrubs which are in direct conflict with proposed new construction shall be removed by the Contractor with the Engineer's approval. Trees and shrubs which are not in direct conflict with proposed new construction shall be saved and protected from damage.



Contractor Shall Follow All Applicable Best Management Practices (BMP) For Erosion Control, See Sheet 4

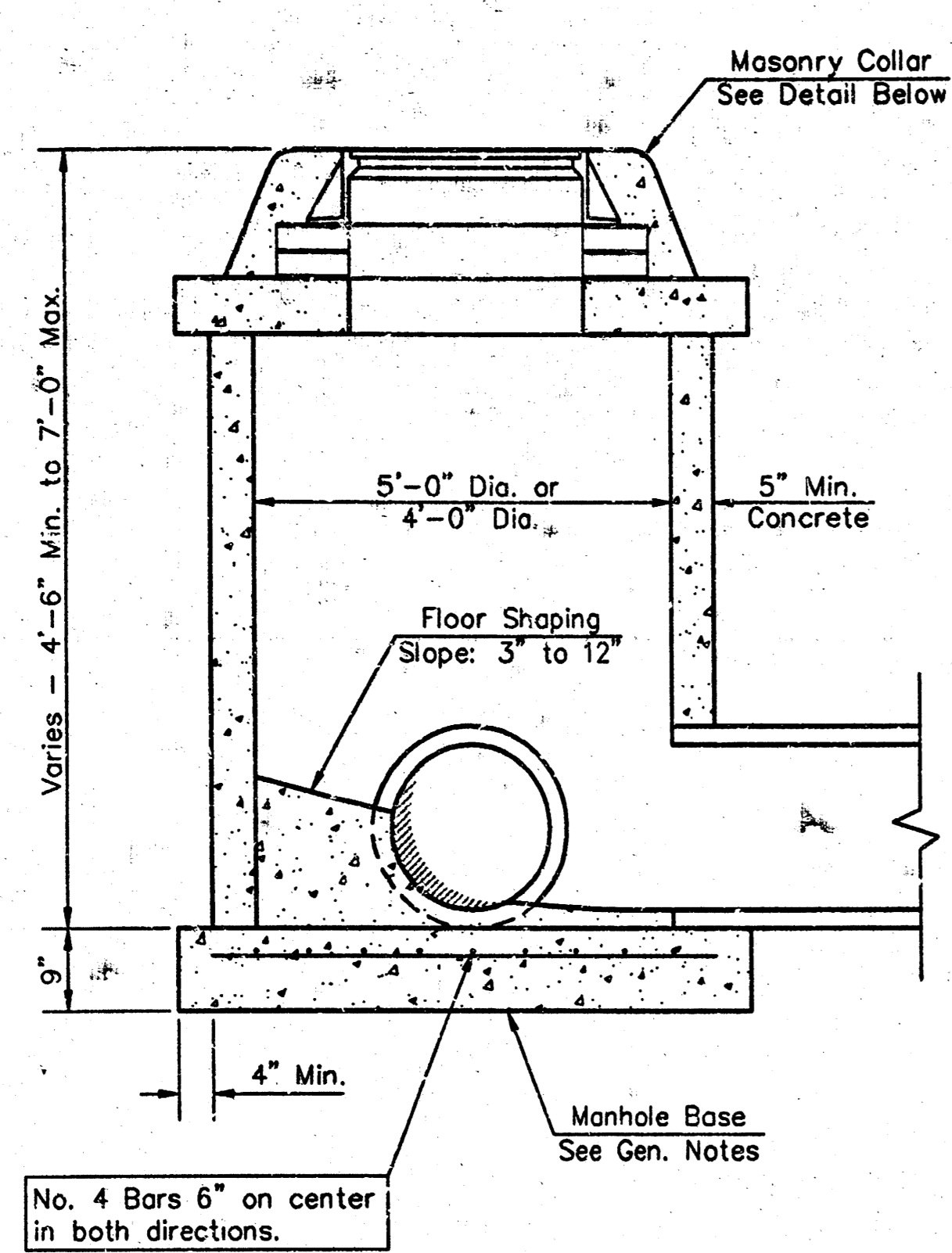


Sanitary Sewer To Serve
Armstrong's Addition
Lots 122, 124, 126 & 128

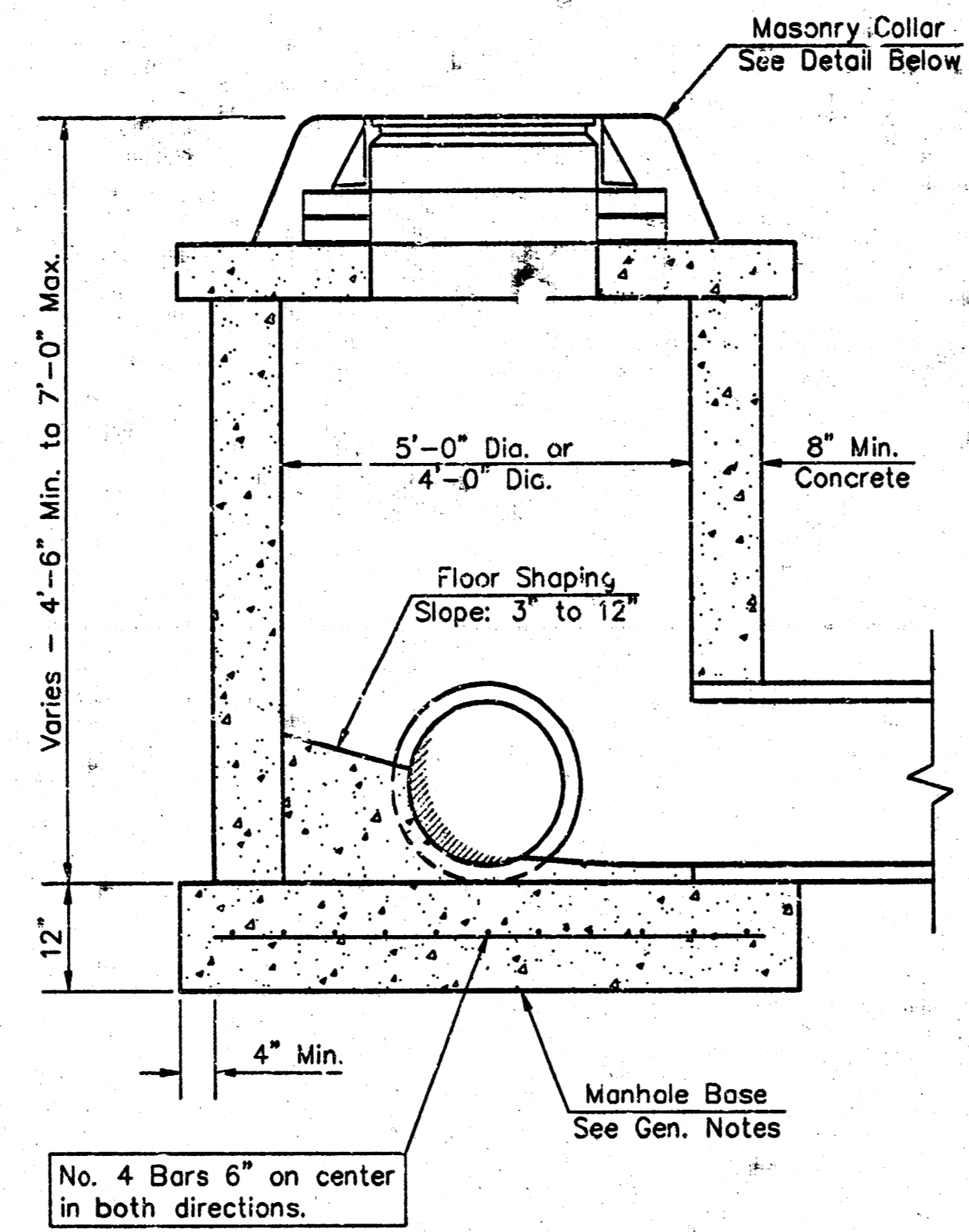
BAUGHMAN COMPANY P.A.
ENGINEERING, SURVEYING, & PLANNING
315-252-7271 • 315 ELLIS • WICHITA, KANSAS 67211

PROJECT NUMBER
1304 PPS (607861)

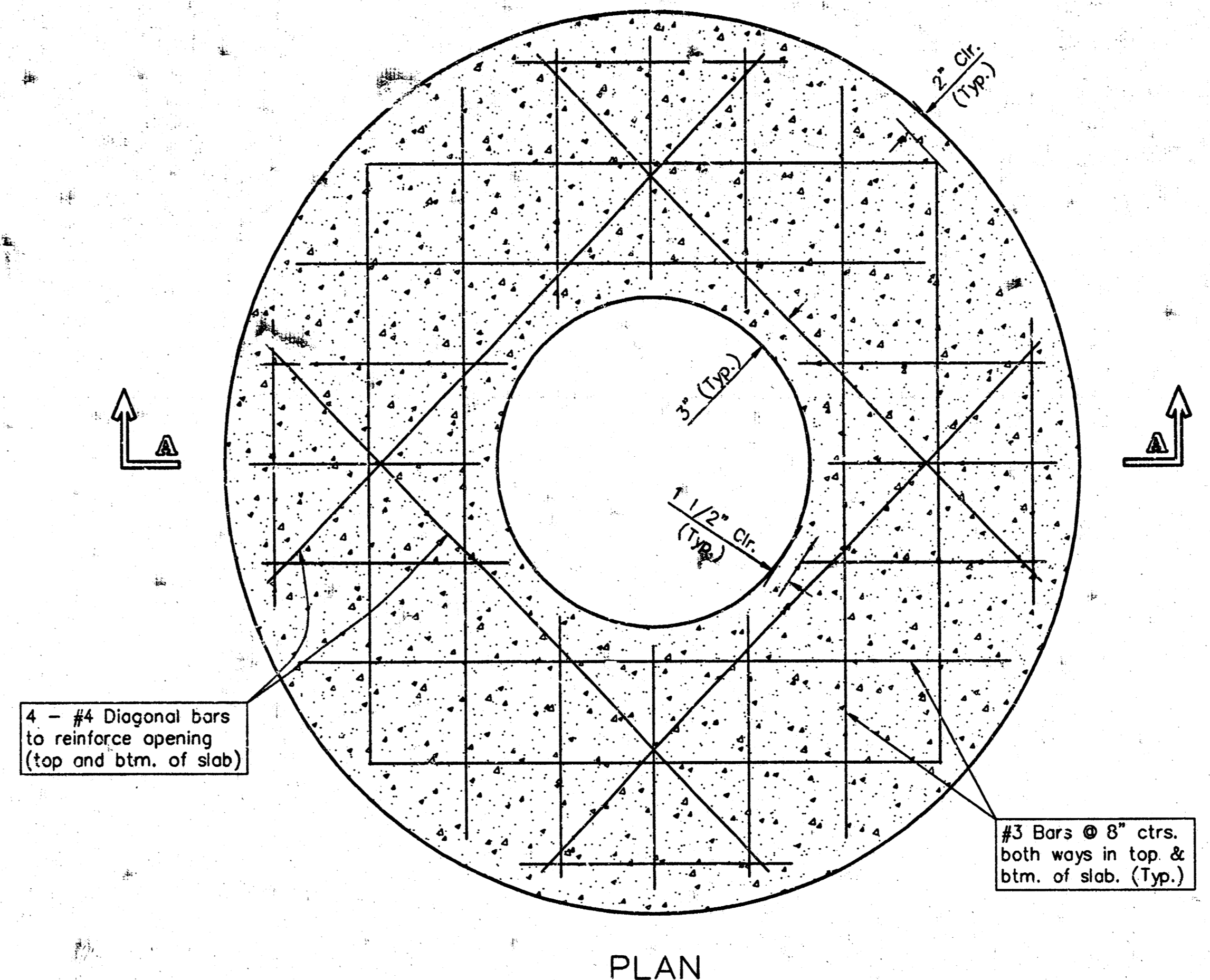
DESIGN LU DRAW LU APPROVED LU DATE 12/02 SCALE Noted SHEET 1 OF 5



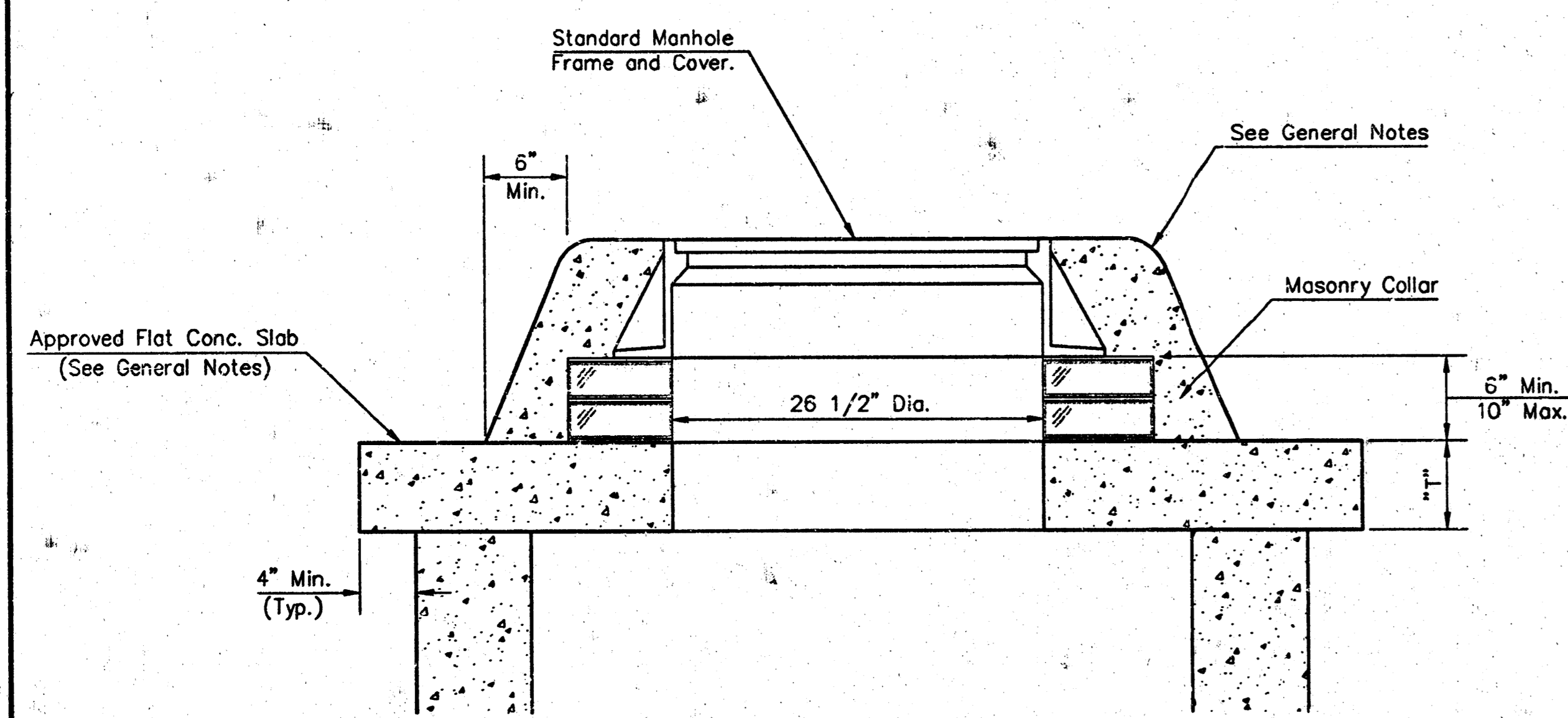
SHALLOW TYPE "P" MANHOLE



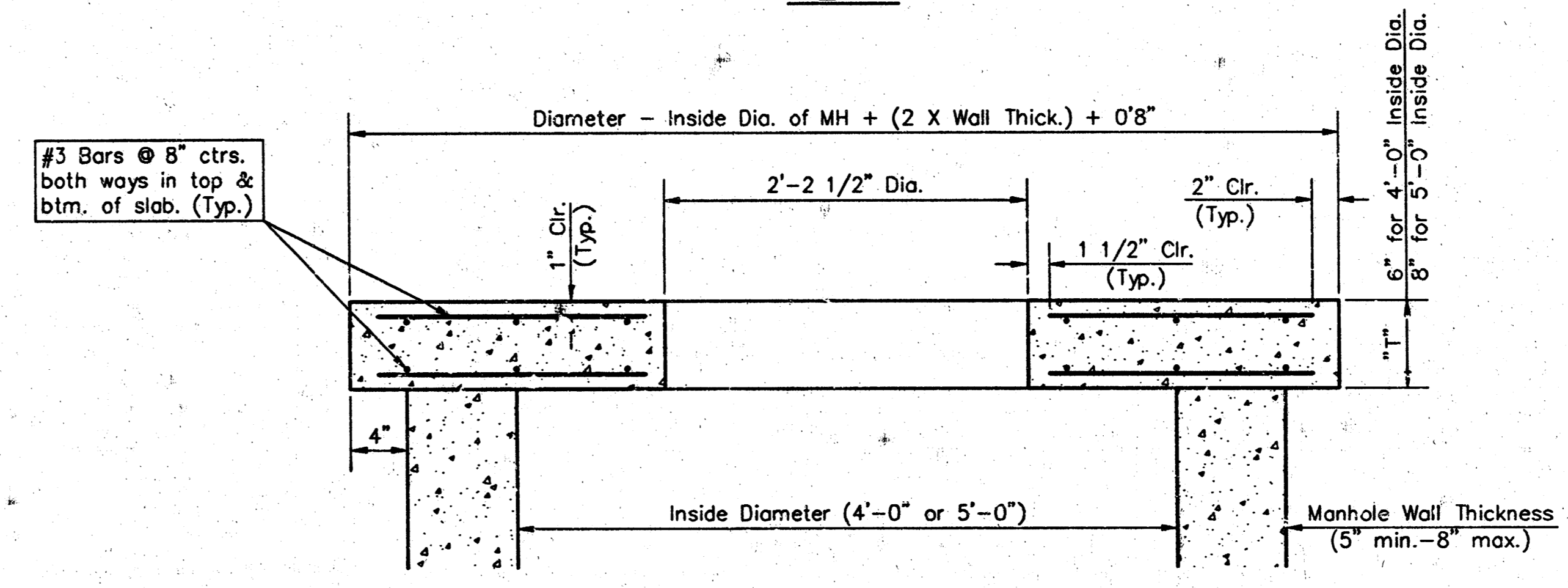
SHALLOW TYPE "C" MANHOLE



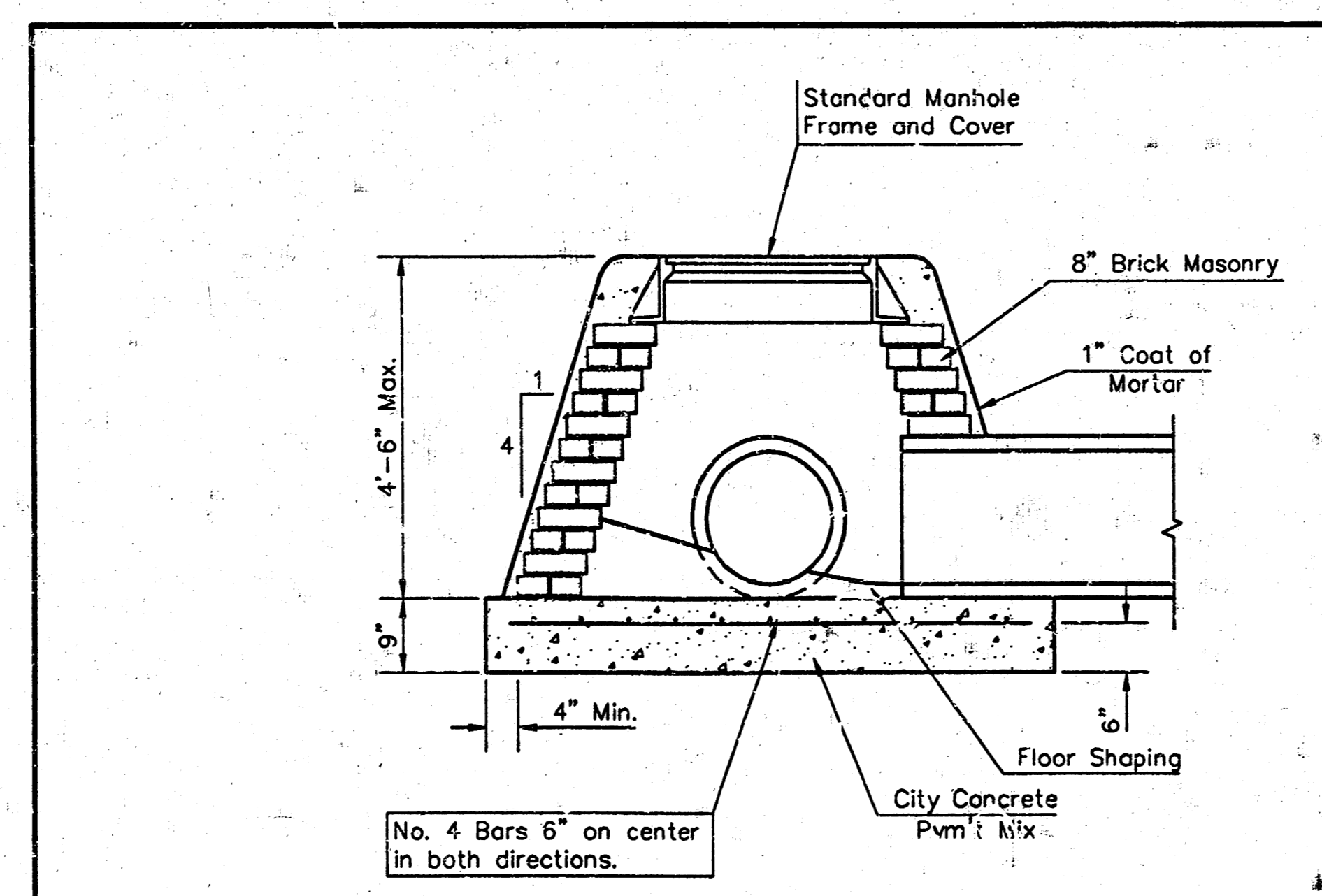
PLAN



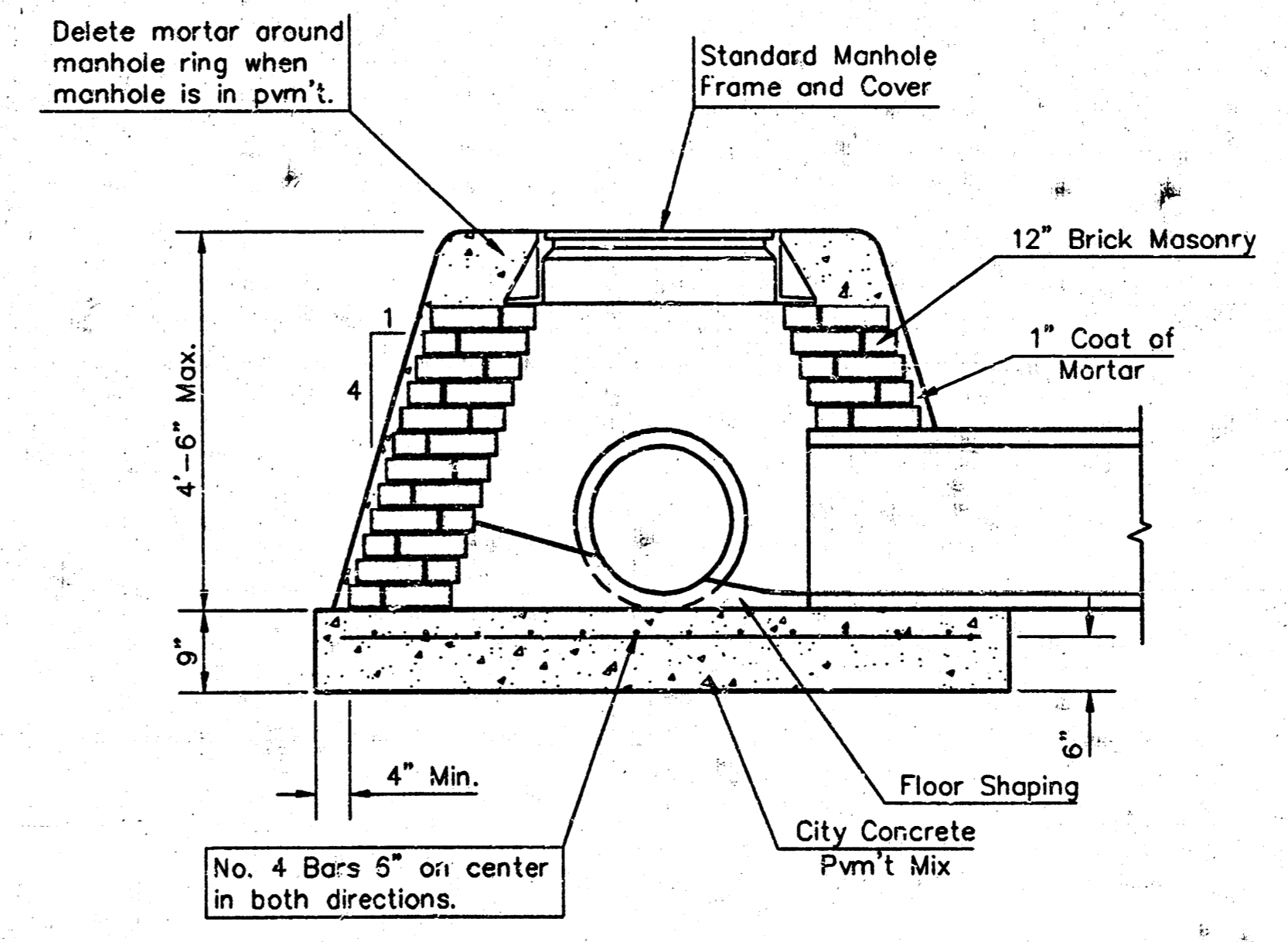
MASONRY COLLAR DETAIL



SECTION A-A
FLAT CONCRETE SLAB DETAILS



SPECIAL SHALLOW TYPE "A" MANHOLE



SPECIAL SHALLOW TYPE "B" MANHOLE

GENERAL NOTES

- Mortar used in masonry construction shall contain 8 sacks of cement per cubic yard. Concrete used in manhole bases shall conform to the requirements of concrete for concrete pavement construction as specified in the city standard paving specifications using city concrete cement mix without air entraining admixture. Mortar shall be placed around the manhole ring as shown on the drawings when manholes are constructed in unpaved areas. Manholes constructed where pipe sizes are smaller than 24" shall have an inside diameter of 4". Manholes constructed where pipe sizes are 24" or larger shall have an inside diameter of 5". Completed manhole shall be without leaks and water tight.
- Reinforcing steel shall be installed in the manhole bases and shall consist of no. 4 bars placed on 6" centers in both directions. The manhole base reinforcement shall be placed 6" above the bottom of the manhole base. All costs for furnishing and installing reinforcing steel shall be included in the unit price bid for the manhole.
- The floors of all manholes shall be shaped with flow channels such that the manholes will be self cleaning and free of areas where solids could be deposited as sewage flows through the manhole from all inlet pipes to the outlet pipe. Flow channels shall be formed to match the bottom halves of the inflowing pipes and the outflowing pipe as shown by the drawings. Manhole floors shall have slopes of 3 inches per foot in the areas outside of the flow channels sloped toward the flow channels. Pipes laid through manholes shall have the top half removed to neat lines for the full inside diameter of the manhole. Manhole floors shall then be shaped around the bottom half of the pipe which forms the flow channel.
- Pipes installed within the excavation made for the manhole shall be cradled with concrete to the limits of the manhole excavation. When clay pipe is used, the cradle shall extend to the first joint outside the manhole. The cradle shall be terminated at the clay pipe joint in a manner which will maintain the flexibility of the joint. Cost of cradle within manhole excavation or to clay pipe joints adjacent to manhole shall be included in the unit price bid for the manhole.
- Manhole cover castings and manhole frame castings shall conform to the requirements as indicated in the standard specifications and as shown in the standard detail drawings.
- The crowns of inflowing pipes shall never be set lower than the crown of the outflowing pipe.
- Standard shallow manholes type "P" and "C" shall be paid for at the unit price bid per each for the type and diameter indicated. All standard shallow manhole diameters will be 4' unless indicated otherwise.
- All brick used in manhole construction shall meet Grade SW of ASTM C652 or C62-87.

CITY OF WICHITA, KANSAS
STD. SHALLOW MANHOLES
TYPE "P" AND TYPE "C"

BAUGHMAN COMPANY P.A.
ENGINEERING, SURVEYING, & PLANNING
316-262-7271 • 316 E. FLINT • WICHITA, KANSAS 67211

PROJECT NUMBER
1304 PPS (607861)

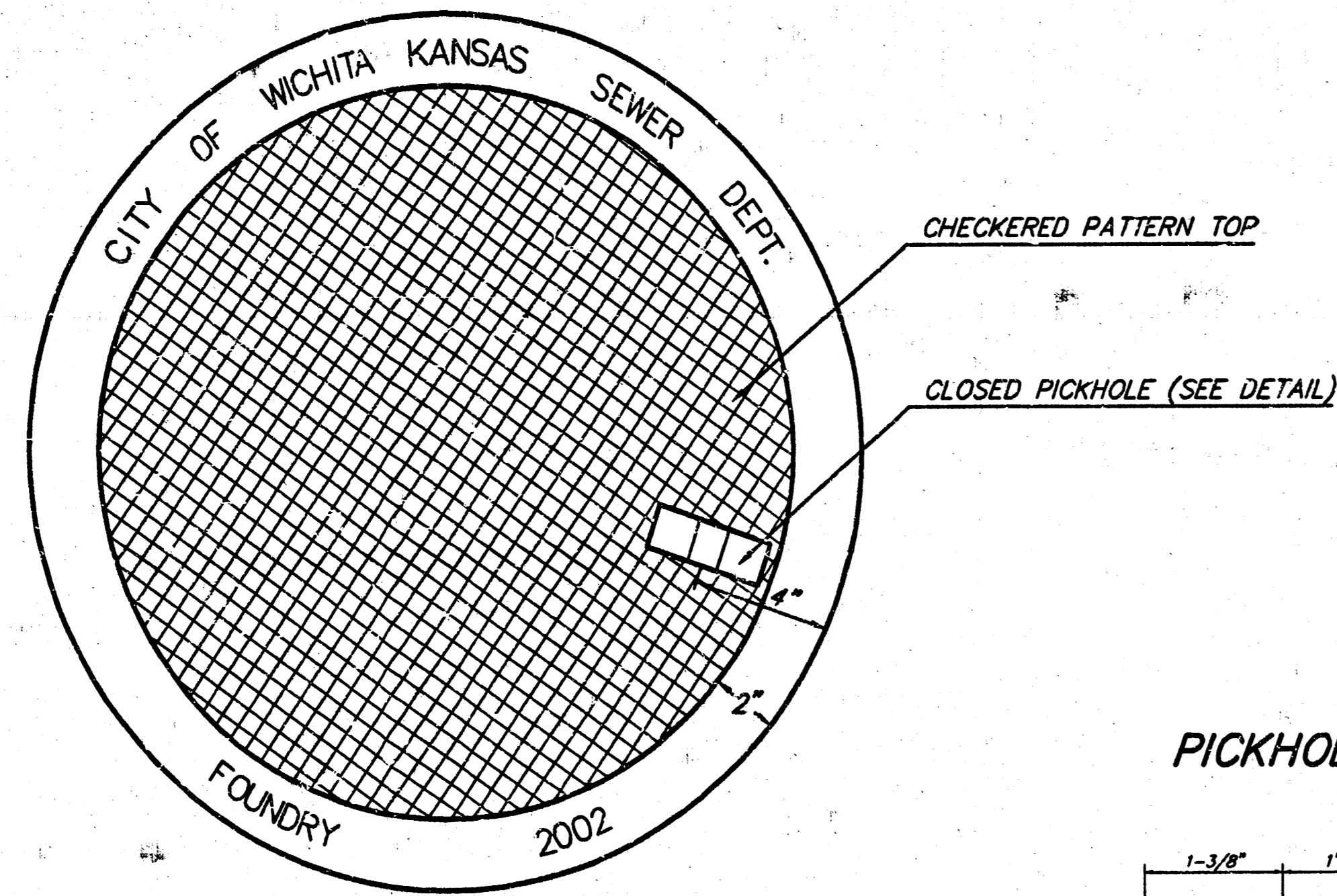
DESIGN STAFF: [] DRAWN STAFF: [] APPROVED STAFF: [] DATE: 12/02 SCALE: NONE

SHEET **2** OF **5**

MANHOLE COVER
Weight = 180 Lbs.

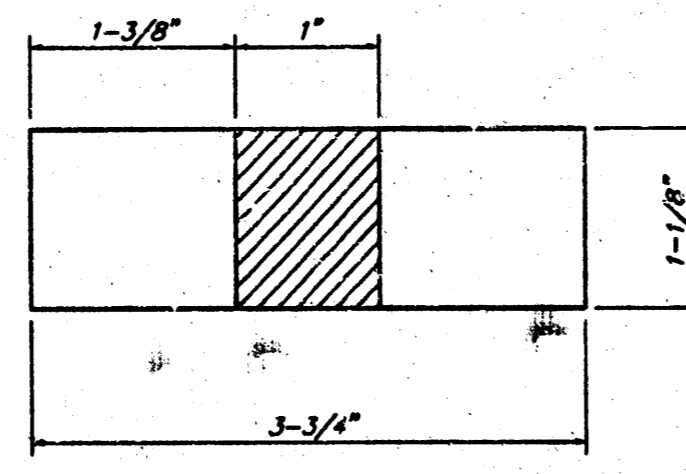
MANHOLE FRAME AND COVER DETAIL

ADOPTED AS STANDARD DESIGN BY
CITY OF WICHITA, KANSAS

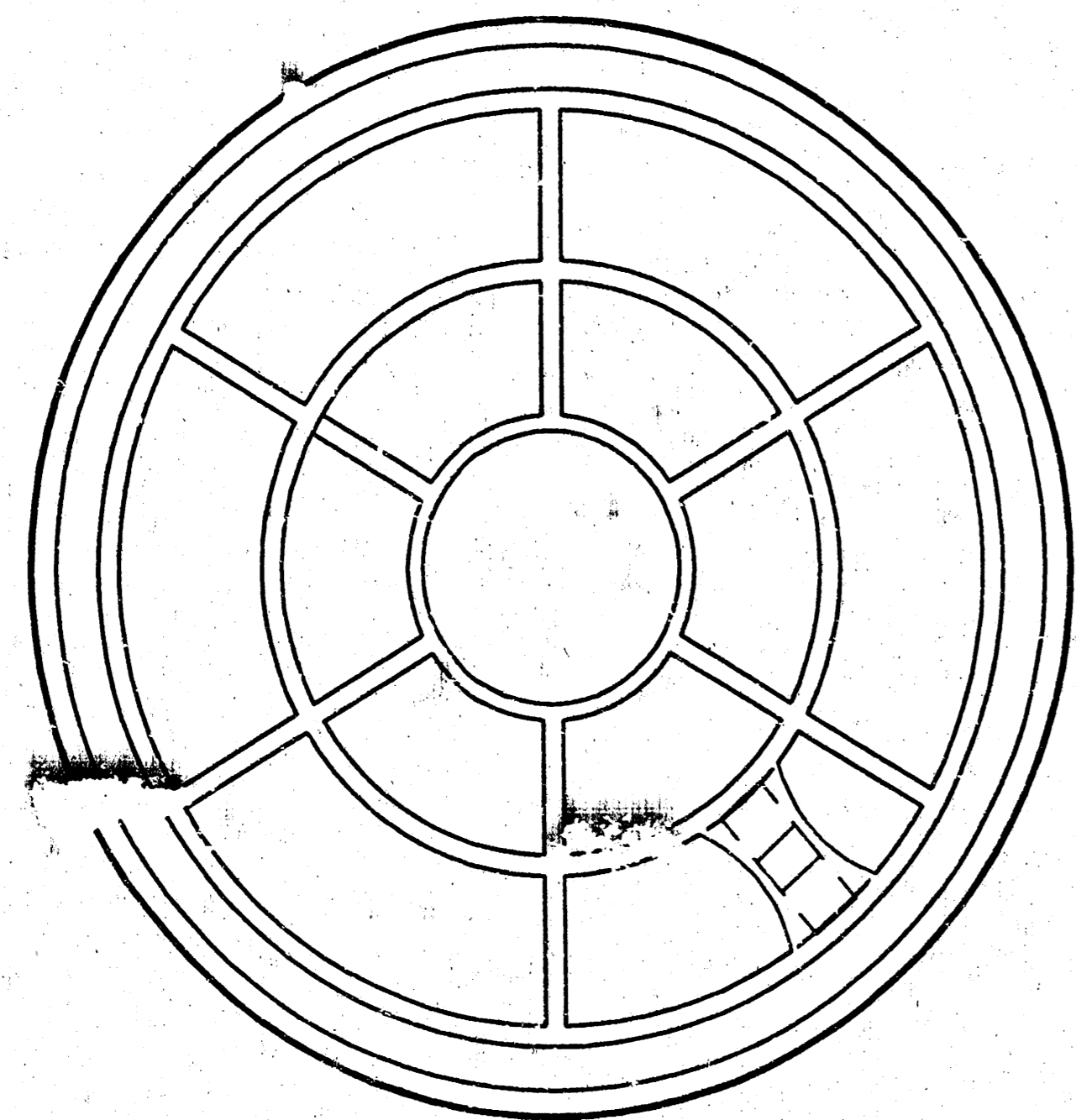


TOP VIEW

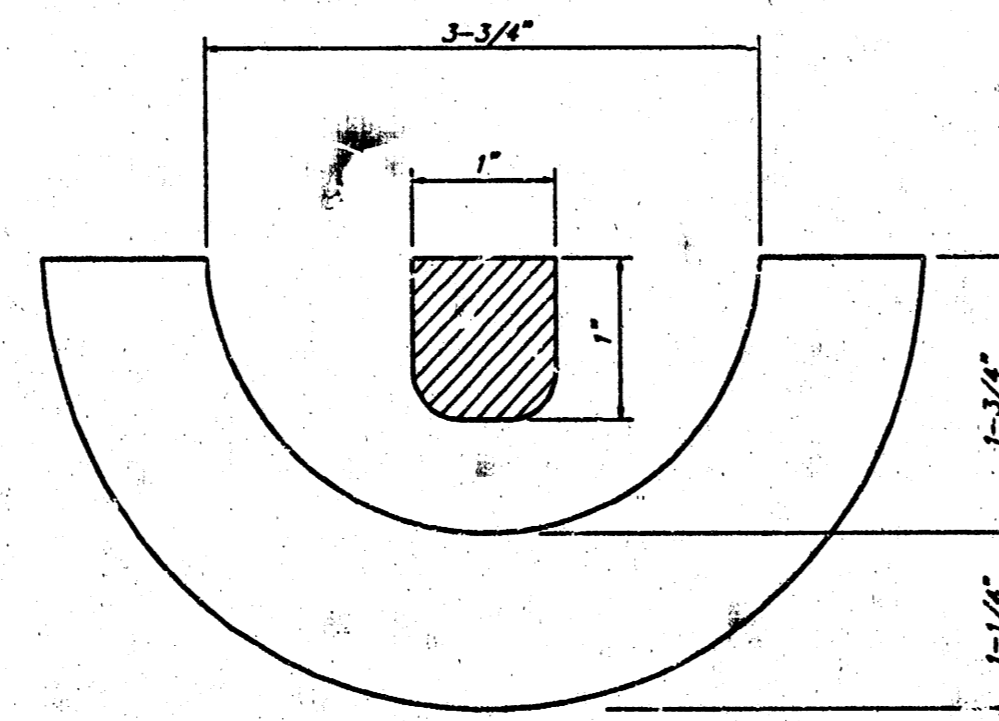
PICKHOLE DETAIL



TOP VIEW

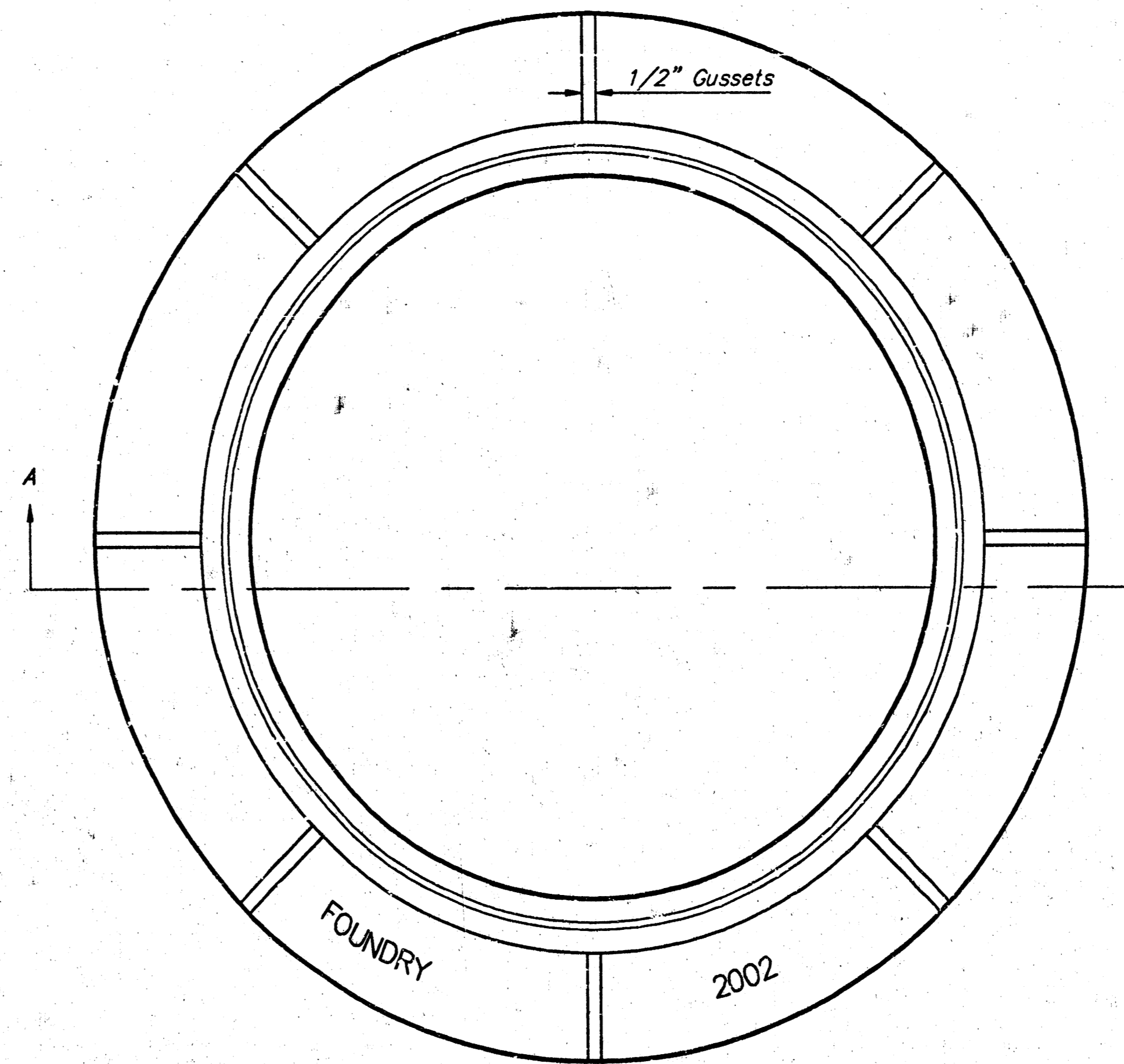


BOTTOM VIEW



SECTION VIEW

MANHOLE FRAME
Weight = 145 Lbs.



TOP VIEW

GENERAL NOTES

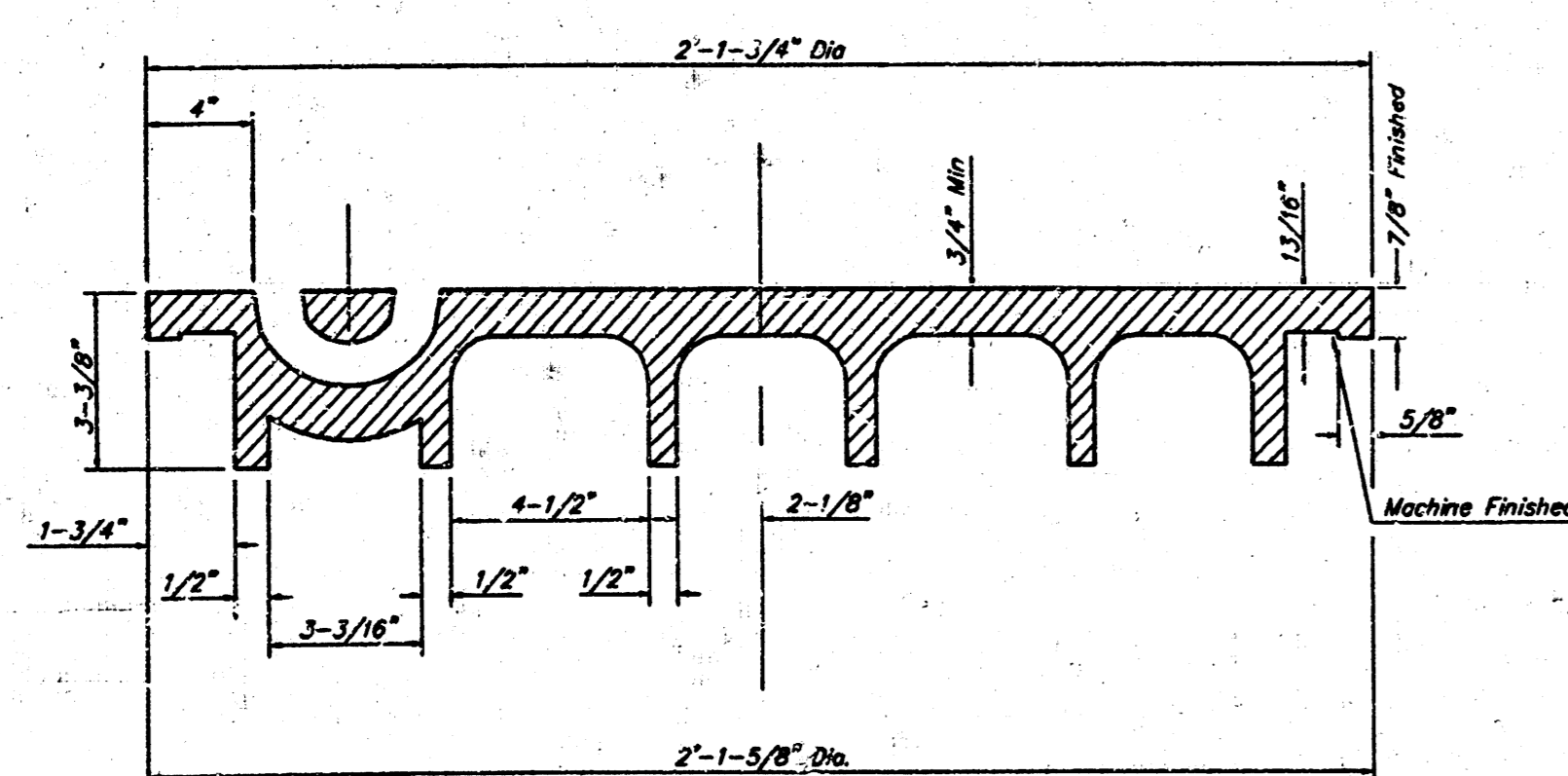
MANHOLE CASTINGS SHALL BE MANUFACTURED USING GOOD QUALITY GRAY IRON CONFORMING TO CLASS 30 OF A.S.T.M. DESIGNATION A-48. DIMENSIONS AND WEIGHTS SHOWN ON THE DETAILED DRAWINGS SHALL BE CONSIDERED AS MINIMUM REQUIREMENTS AND ANY DEVIATIONS FROM THE DIMENSIONS SHOWN MUST BE SPECIFICALLY APPROVED. THE FINISHED CASTINGS SHALL BE OF UNIFORM QUALITY, FREE FROM BLOWHOLES, POROSITY, HARD SPOTS, SHRINKAGE DISTORTIONS OR OTHER DEFECTS.

MANHOLE CASTINGS SHALL BE COATED WITH AN ASPHALT PAINT RESULTING IN A SMOOTH, TOUGH AND TENACIOUS COATING WHICH IS NOT BRITTLE OR TACKY.

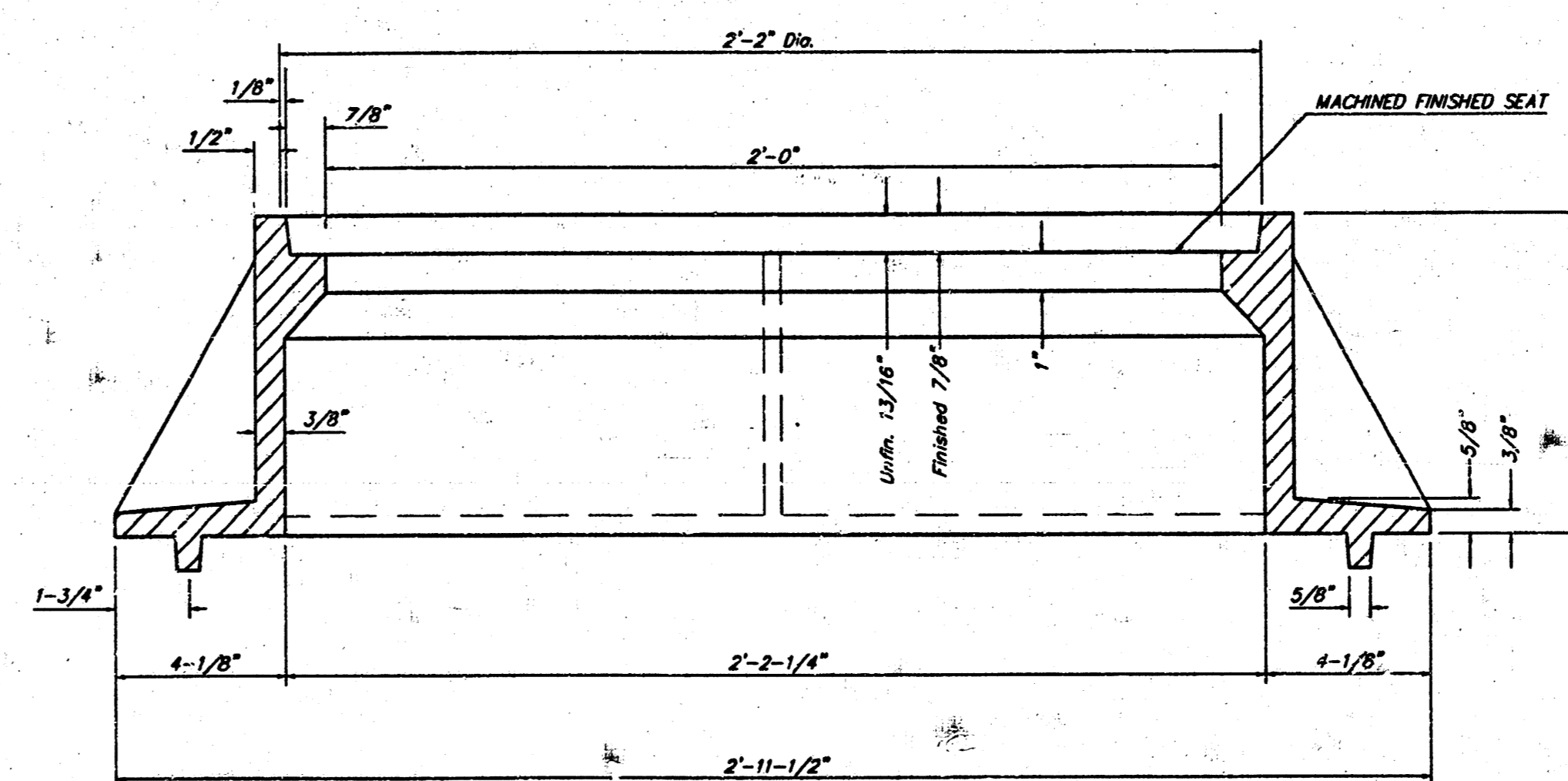
MANHOLE CASTINGS SHALL BE MANUFACTURED SUCH THAT A COVER MANUFACTURED BY ANY ONE FOUNDRY WILL FIT INTERCHANGEABLY INTO A FRAME MANUFACTURED BY ANOTHER FOUNDRY AND STILL MEET ALLOWABLE CLEARANCES AND NON-ROCKING REQUIREMENTS. THIS WILL REQUIRE MANUFACTURING OF THE MATCHING FACES ON THE COVER AND THE FRAME TO CLOSE TOLERANCES.

THE OUTSIDE CIRCUMFERENCE OF THE VERTICAL FACE OF THE COVER AND THE INSIDE CIRCUMFERENCE OF THE VERTICAL FACE IN THE FRAME RECESS SHALL BE MANUFACTURED TO TOLERANCES SUCH THAT THE CLEARANCE BETWEEN THE COVER AND FRAME WILL NOT EXCEED 1/8" AT ANY POINT AROUND THE CIRCUMFERENCE OF THE COVER. THE SEATING SURFACES BETWEEN THE COVER AND FRAME SHALL BE MACHINED SUCH AS THESE SURFACES SHALL MAKE FULL CONTACT FOR THEIR FULL CIRCUMFERENCE TO PRECLUDE THE COVER FROM ROCKING IN THE FRAME.

THE MANHOLE FRAME AND COVER SHALL BE MARKED WITH LETTERING INDICATING THE NAME OF THE MANUFACTURER AND THE YEAR WHEN THE COVER OR FRAME WAS CAST. THE COVER SHALL BE FURTHER IDENTIFIED WITH REGARDS TO OWNERSHIP USING LETTERS AT LEAST 1 INCH IN HEIGHT. THIS IDENTIFICATION SHALL BE "CITY OF WICHITA SEWER DEPARTMENT". THE WORD DEPARTMENT MAY BE ABBREVIATED. THE TEXTURE OF THE TOP SURFACE OF THE COVER SHALL BE MANUFACTURED IN A CHECKERED PATTERN DESIGN AS INDICATED ON THE DRAWINGS. SMOOTH BLOCKOUTS SHALL BE UTILIZED TO HIGHLIGHT THE LETTERING ON THE COVER SURFACE. THE TOTAL AREA OF SMOOTH SURFACE BLOCKOUT SHALL NOT EXCEED THE AREA AS INDICATED ON THE DRAWING. POSITIONING OF SMOOTH BLOCKOUTS AND LETTERING MAY VARY FROM THAT SHOWN ON THE DETAILED DRAWING.



SECTION VIEW



SECTION A-A

MANHOLE FRAME AND COVER DETAIL				
ADOPTED AS STANDARD DESIGN BY CITY OF WICHITA, KANSAS				
BAUGHMAN COMPANY P.A. ENGINEERING, SURVEYING, & PLANNING				
316-262-7271 • 315 ELLIS • WICHITA, KANSAS 67211				
PROJECT NUMBER 1304 PPS (807881)				SHEET 3
DESIGN STAFF	DRAWN STAFF	APPROVED	DATE 12/02	SCALE NONE

ALL INFORMATION CONTAINED HEREIN IS UNCLASSIFIED DATE 03-22-2011 BY 60322 UCBA

118-A-213

ARMSTRONG'S ADDITION

TO WICHITA KANSAS.

ENTERED ON TRANSFER RECORD July 27 1910. J.L. LEWIS COUNTY CLERK

I, *Pansom H. Brown*, a civil engineer in said county and state, do hereby certify that I have surveyed and plotted Armstrong's Addition to Wichita Kansas and that the accompanying plat is a correct exhibit of the property as surveyed, described as follows: Being Lots 49, 51, 53, 55, 57, 59, 61 Hiram Ave. University Place Addition to Wichita Kansas.

Know all men by these presents that we *M.H. Armstrong and Fannie B. Armstrong*, his wife, have caused the land described in the survey certificate to be surveyed and platted into lots to be known as Armstrong's Addition to Wichita Kansas.

M.H. Armstrong
F.B. Armstrong

Be it remembered that on this 18th day of October 1909, before me a Notary Public in and for said county and state came *M.H. Armstrong and Fannie B. Armstrong*, his wife, to me personally known to be the same persons who executed the foregoing instrument of writing and duly acknowledged the execution of the same as their voluntary acts and deeds.

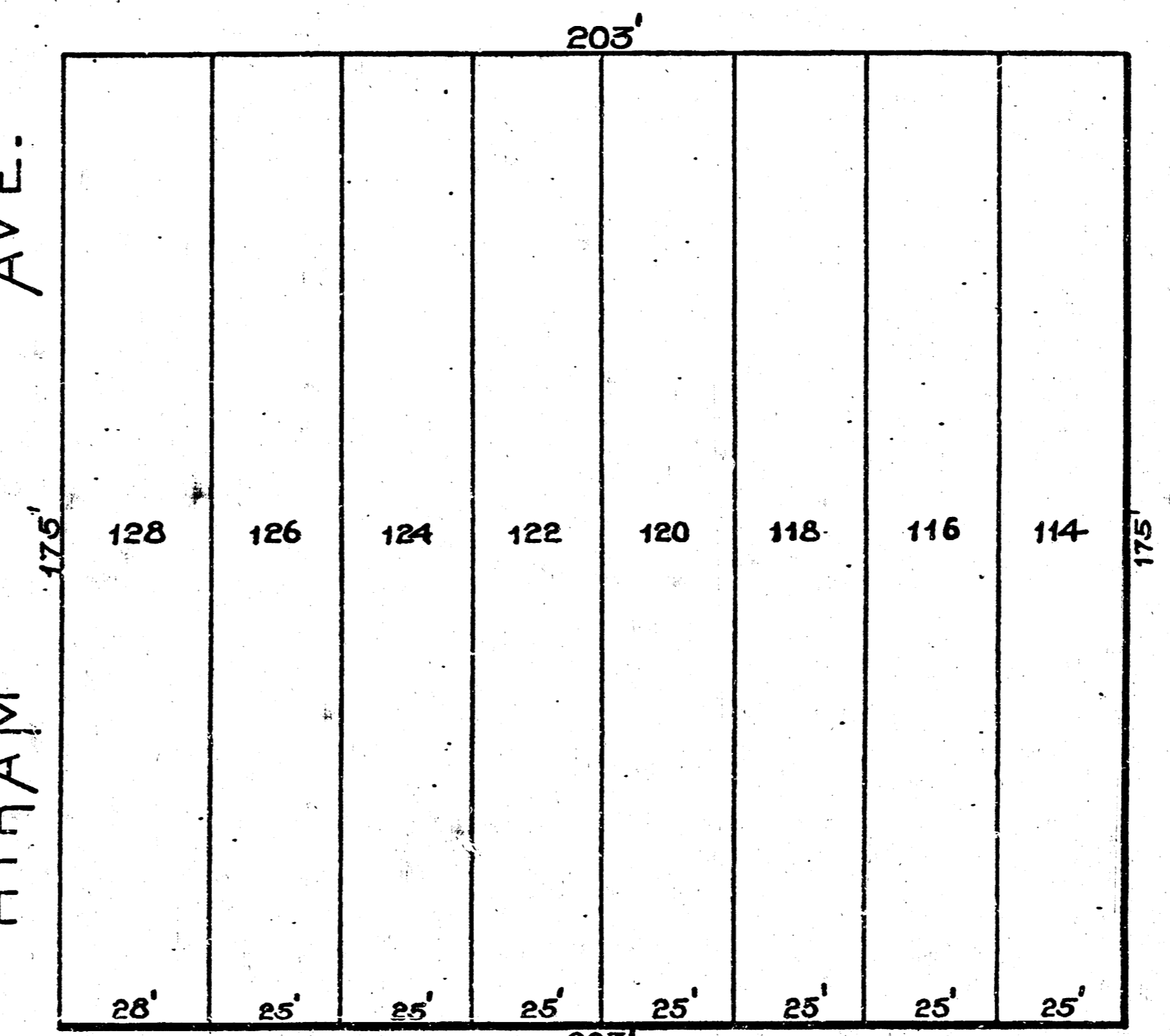
G.M. Dixon, Notary Public.
My Commission expires 27 May 1910.

This Plat was approved by the city commissioners Nov 8, 1909.
City Clerk

This is to certify that this instrument was filed for record in my office at 11th o'clock A.M. July 27, 1910 and is duly recorded in Book... Register of Deeds.
By *E.L. Mason*, Deputy.

Joseph Bowman, Register of Deeds of Sedgewick County, Kansas do hereby certify that the above is a true and correct copy of the plat of Armstrong's Addition to Wichita, Kansas; that the original of which the above is a copy, is in file in my office and that I have the legal custody thereof. Witness my hand and the seal of my office this 3rd day of November 1910.

Joseph Bowman
Register of Deeds.



UNIVERSITY AVE.

O.K. Bert C. Wells *O.K. H.J. Roetzal*
County Pub. Imp. Streets

0-5 212

10 12 01 14