

PLANS
FOR
SANITARY SEWER EXTENSION
ARTHUR HEIGHTS ADDITION
BEL AIRE, KANSAS

1988

SE0688

CITY OF WICHITA PROJECT NO. 468-75-245-80001-000-000-181

APPROVED AS NOTED
By CITY ENGINEER OF WICHITA
Sanitary Sewers 9/22/88
Storm Sewers _____
Driveway Approaches _____
Water Mains _____
Paving _____

NOTE TO CONTRACTOR
INSPECTION AND TESTING FOR THIS PROJECT IS TO BE PROVIDED BY A LICENSED CONSULTING ENGINEERING FIRM UNDER CONTRACT WITH THE OWNER/DEVELOPER. SAID INSPECTION TO BE IN ACCORDANCE WITH THE CITY OF WICHITA STANDARD CONSTRUCTION ENGINEERING PRACTICES AND CERTIFIED BY A LICENSED PROFESSIONAL ENGINEER. NO WORK SHALL BE PERFORMED IN DEDICATED EASEMENTS OR THE PUBLIC RIGHT-OF-WAY BY THE CONTRACTOR WITHOUT SUCH INSPECTION NOR SHALL ANY WORK BE COMMENCED IN DEDICATED EASEMENTS OR PUBLIC RIGHT-OF-WAY WITHOUT WRITTEN AUTHORIZATION BY THE CITY ENGINEER.

NOTE TO CONTRACTOR
INSPECTION AND TESTING FOR THIS PROJECT IS TO BE PROVIDED BY A LICENSED CONSULTING ENGINEERING FIRM UNDER CONTRACT WITH THE OWNER/DEVELOPER. SAID INSPECTION TO BE IN ACCORDANCE WITH THE CITY OF WICHITA STANDARD CONSTRUCTION ENGINEERING PRACTICES AND CERTIFIED BY A LICENSED PROFESSIONAL ENGINEER. NO WORK SHALL BE PERFORMED IN DEDICATED EASEMENTS OR THE PUBLIC RIGHT-OF-WAY BY THE CONTRACTOR WITHOUT SUCH INSPECTION NOR SHALL ANY WORK BE COMMENCED IN DEDICATED EASEMENTS OR PUBLIC RIGHT-OF-WAY WITHOUT WRITTEN AUTHORIZATION BY THE CITY ENGINEER.

AS BUILT



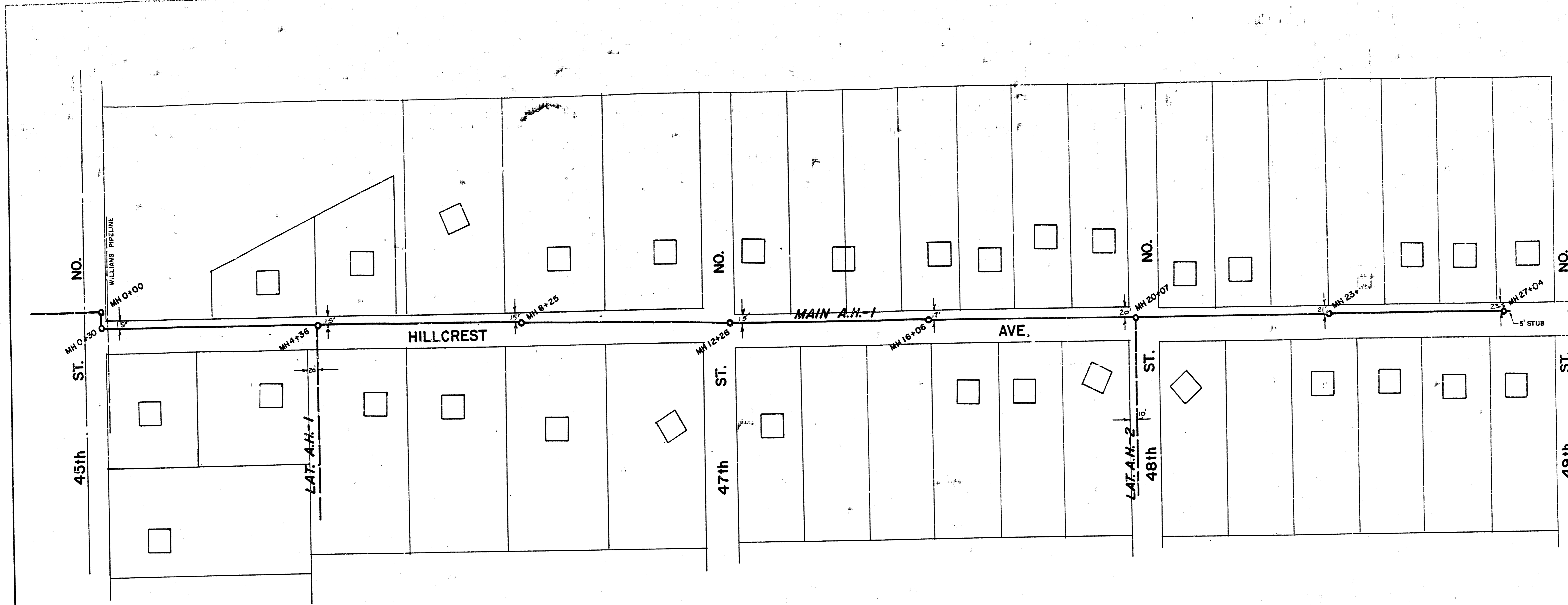
DEISS & GOODNESS ENGINEERS
2100 WEST 21ST STREET
WICHITA, KANSAS 67203
(316) 632-0250

REV. 9-23-88

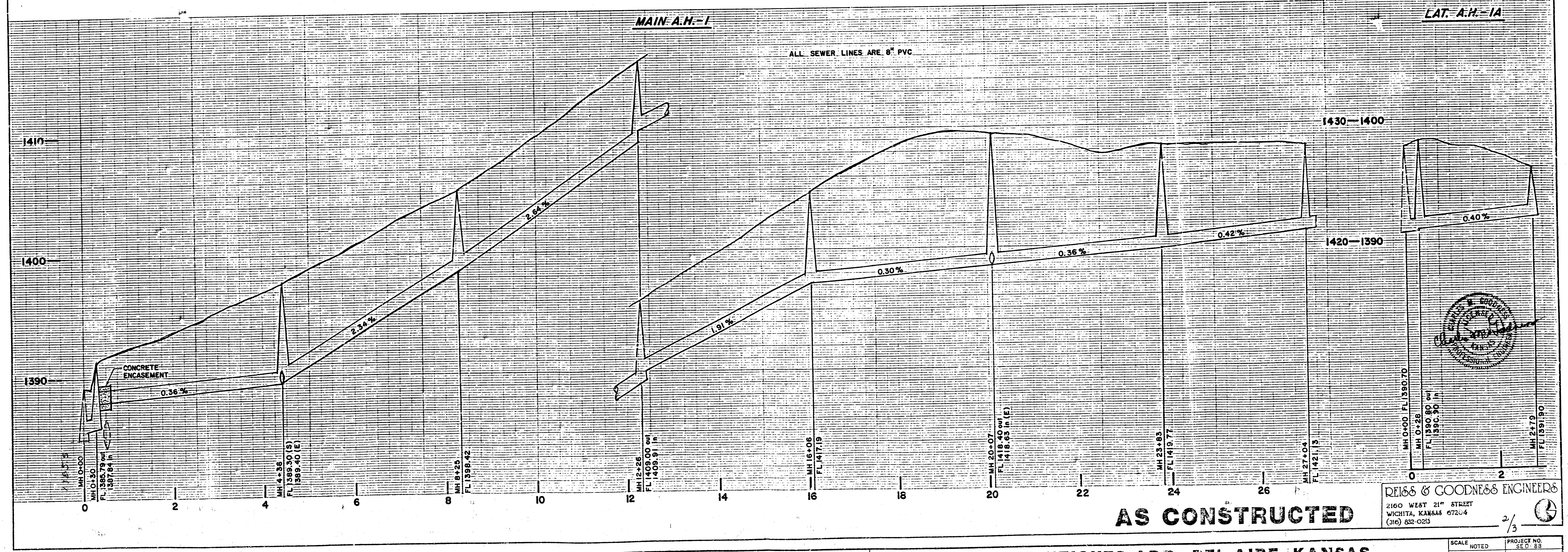
REVISION	DRAWN BY	CHECKED BY	DESIGNED BY

PROJECT NO. SE0688
DATE 8-18-88 SHEET 1 OF 7

FILMED FROM THE BEST AVAILABLE COPY



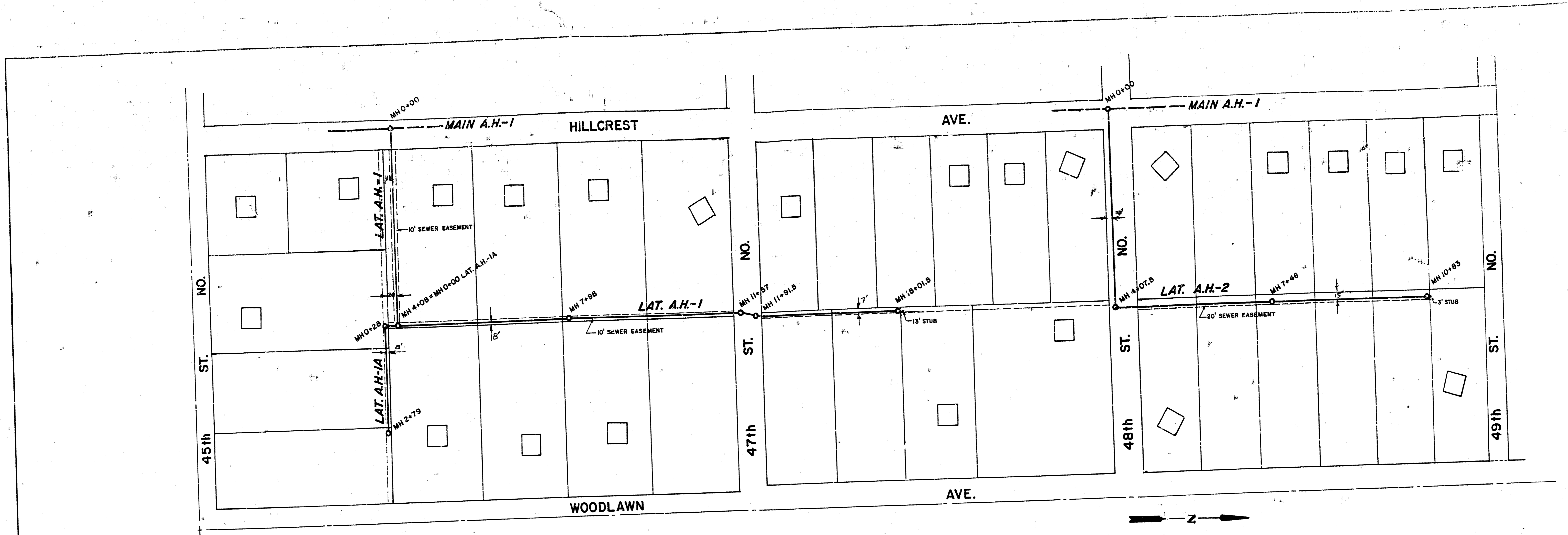
SCALE
 PLAN: 1" = 100'
 PROFILE: VERT. - 1" = 4'
 HORZ. - 1" = 100'



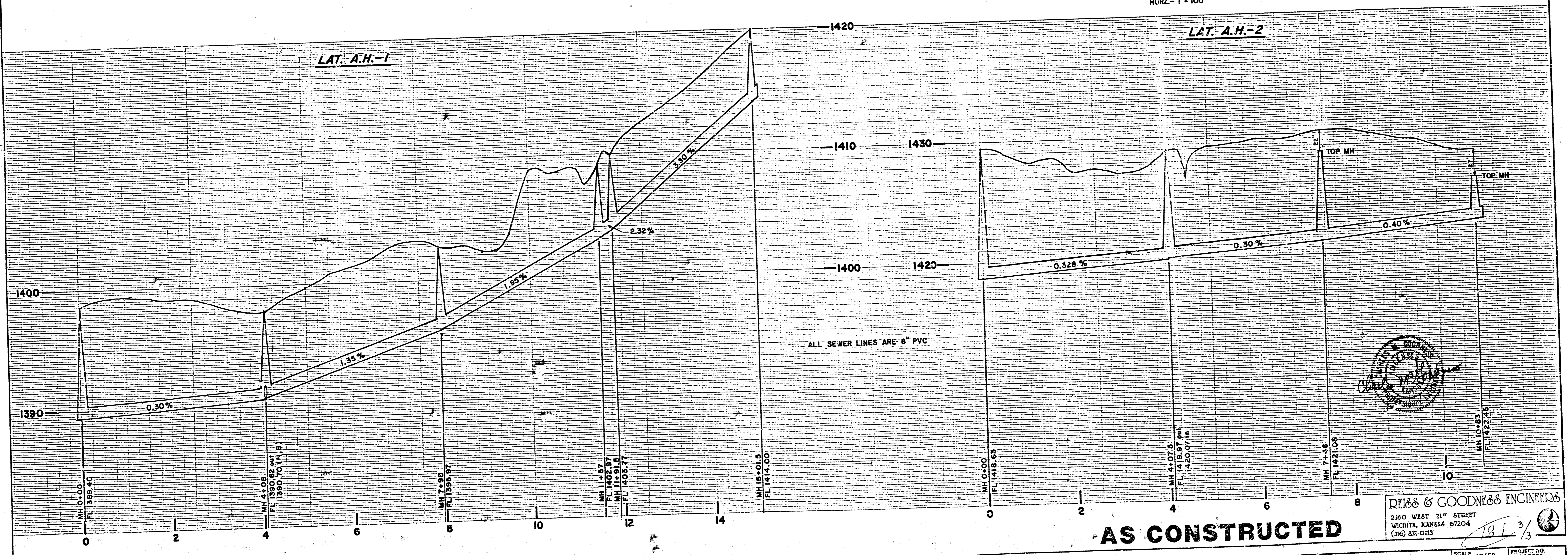
REVISION	DRAWN BY	CHECKED BY	DESIGNED BY	PROJECT	CUSTOMER	DATE	SCALE	NOTED	PROJECT NO.
	CG	CG	CG	SANITARY SEWER EXTENSION	ARTHUR HEIGHTS ADD.-BEL AIRE, KANSAS	1-3-89	1" = 4'		35 C. 23

REISS & GOODNESS ENGINEERS
 2160 WEST 21ST STREET
 WICHITA, KANSAS 67204
 (316) 832-0213

FILMED FROM THE BEST
 AVAILABLE COPY



SCALE
 PLAN: 1" = 100'
 PROFILE: VERT. - 1" = 4'
 HORZ. - 1" = 100'



REISS & GOODNESS ENGINEERS
 2100 WEST 21ST STREET
 WICHITA, KANSAS 67204
 (316) 832-0253

AS CONSTRUCTED

REVISION	DRAWN BY	CHECKED BY	DESIGNED BY	PROJECT
	C.G.	C.G.	C.G.	
	DEJ			

SANITARY SEWER EXTENSION

CUSTOMER ARTHUR HEIGHTS ADD.-BEL AIRE, KANSAS

SCALE NOTED	PROJECT NO.
DATE 1-3-89	18313
	SHEET 3 OF 3

FILMED FROM THE BEST AVAILABLE COPY.....