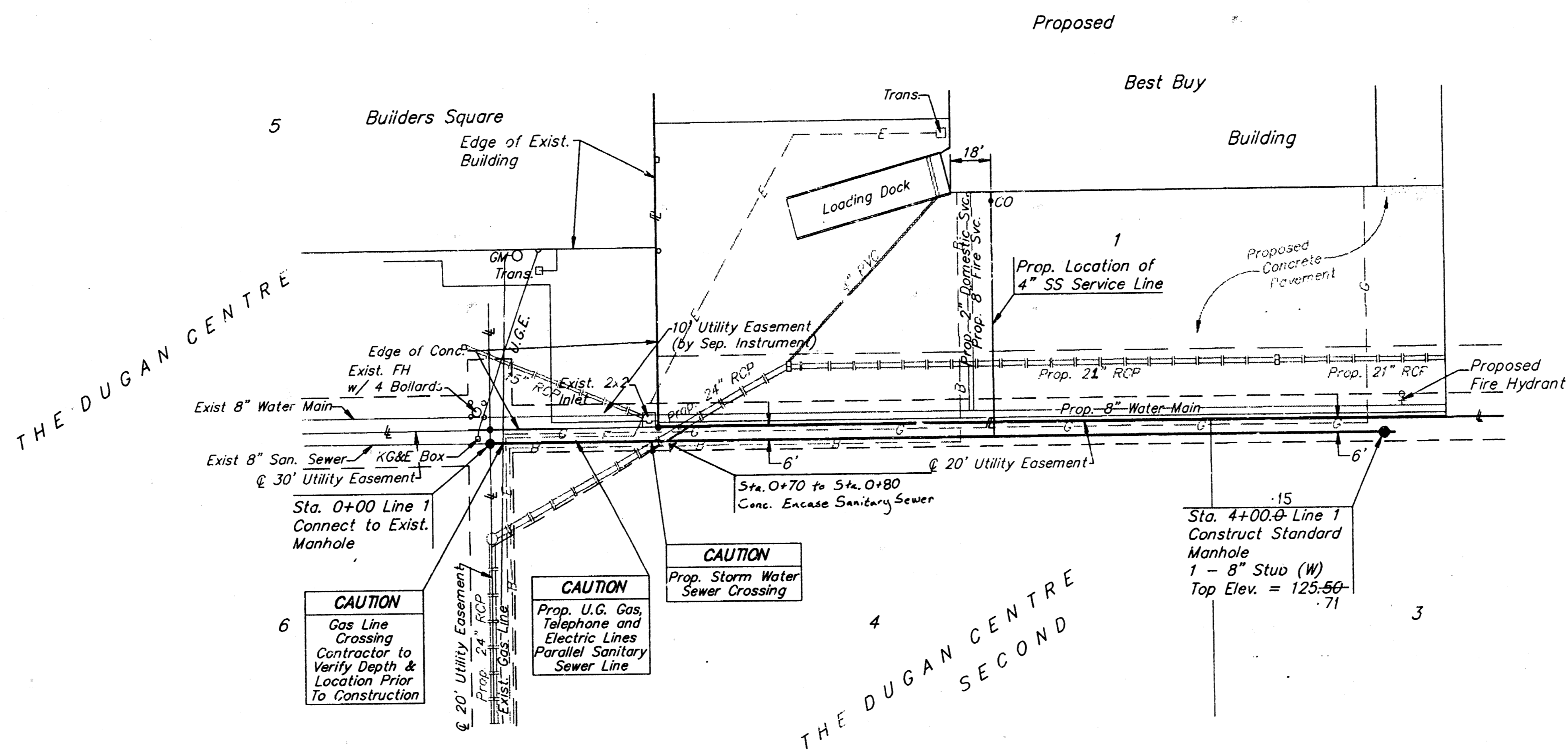


Benchmark

City of Wichita Benchmark Disc, Center of U.S. 54 Pavements and 44' West of Centerline of Dugan.  
Elev. = 121.65 (City Datum)

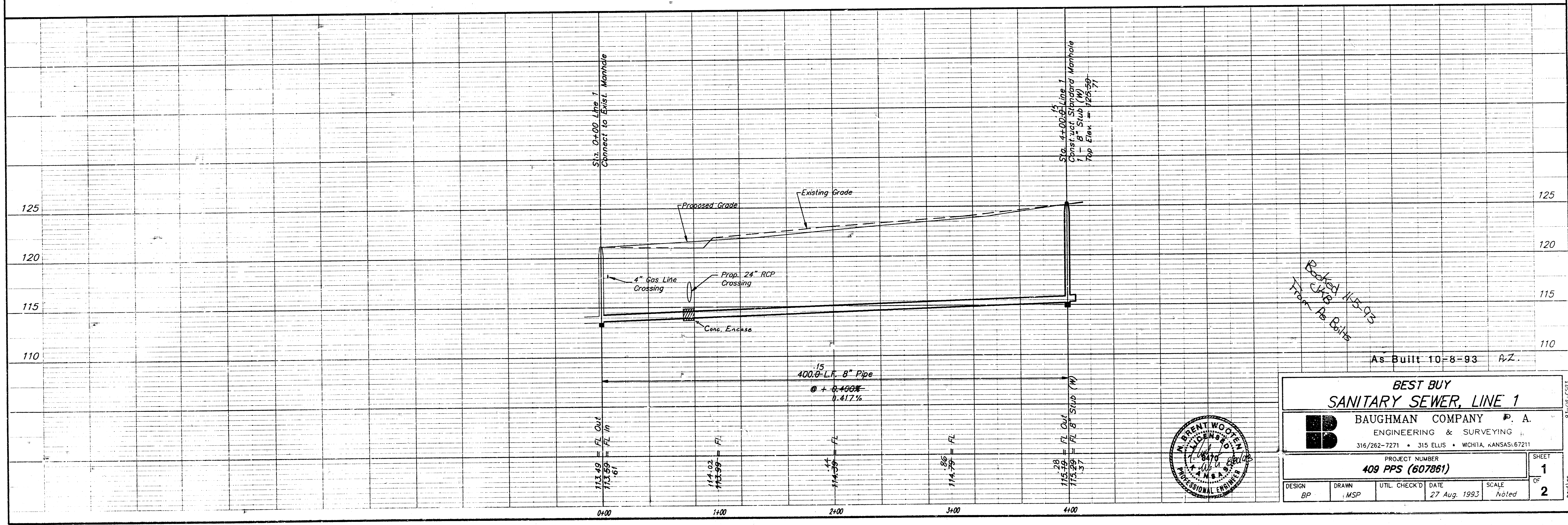
"□" Cut Top of Curb on the East End of the Return at the S.E. Corner of Dugan and Taft.  
Elev. = 118.61 (City Datum)



Scale: 1" = 40' Horizontal  
1" = 5' Vertical  
• = Iron

APPROVED AS NOTED  
BY CITY ENGINEER OF WICHITA  
Sanitary Sewers **VRH 8/30/93**  
Storm Sewers \_\_\_\_\_  
Driveway Approaches \_\_\_\_\_  
Water Mains \_\_\_\_\_  
Paving \_\_\_\_\_

NOTE TO CONTRACTORS  
Inspection and testing for this project is to be provided by a Licensed Consulting Engineering Firm under contract with the Owner/Developer. Said inspection to be in accordance with the City of Wichita standard construction engineering practices and certified by a Licensed Professional Engineer. No work shall be performed in dedicated easements or public right-of-way by the Contractor without such inspection nor shall any work be commenced without written authorization by the City Engineer.



Booked 11-5-93  
CRB  
T. As Built

As Built 10-8-93 A.Z.

**BEST BUY**  
**SANITARY SEWER, LINE 1**

**BAUGHMAN COMPANY P. A.**  
ENGINEERING & SURVEYING  
315/262-7271 • 315 ELLIS • WICHITA, KANSAS 67211

PROJECT NUMBER  
**409 PPS (607861)**

DESIGN: BP    DRAWN: MSP    UTIL CHECK'D: DATE: 27 Aug. 1993    SCALE: Noted

SHEET **1** OF **2**

