

SANITARY SEWER IMPROVEMENTS

to serve BLASI PARK

CITY OF WICHITA, KANSAS

Michael E. Lindelsak, P.E. City Engineer

Private Project Number

958 PPS (607861)

GENERAL NOTES:

- Contractor will be required to provide notice to utility companies a minimum of twenty-four (24) hours prior to any excavation, as follows:

Kansas One-Call 687-2470

The Contractor must notify the following in case of an emergency:

Multimedia Cablevision 262-0661
 K.P.L. Gas Service Company 383-8650
 Kansas Gas & Electric Company 383-8600
 Peoples Gas Company 942-8350
 Southwestern Bell Telephone Company 1-571-2611
 City of Wichita Water Dept. 268-4908
 City of Wichita Traffic Engineering 269-4446

- Underground utility service lines and overhead utility pole lines are to be adjusted as necessary by others prior to construction unless the plans specifically call for their adjustment by the Contractor or unless the plans specifically identify a utility to be adjusted by its owner during construction. Existing utilities and their location, as shown on the plans, represent the best information obtainable for design. The Contractor will be required to work around existing utilities within the right-of-way which do not conflict with proposed construction.

- Trees and shrubs in public right-of-way which are in direct conflict with proposed new construction shall be removed by the Contractor with the Engineer's approval. Trees and shrubs which are not in direct conflict with proposed new construction shall be saved and protected from damage.

- The Contractor shall give all property owners and/or tenants of developed property abutting the construction of this project a minimum of ten (10) days advance notice prior to start of construction.

- The Contractor shall be responsible for preserving property irons. The Contractor will be required to re-establish any property irons which are damaged or destroyed by his construction operations. Such irons shall be re-established by a licensed land surveyor in accordance with state laws.

- All areas disturbed by construction operations shall be seeded with rye grass at a rate of 300 lbs/acre immediately following construction in that area. Prior to seeding, area shall be prepared per City specs.

- The Contractor shall be responsible for maintaining continuous flow of sewage through construction. Contractor's proposed method for maintaining sewage flow shall be approved by the Engineer. Cost of maintaining flow of sewage through construction will not be paid for directly and this cost shall be considered as subsidiary to the other pay items of work.

APPROVED AS NOTED
BY CITY ENGINEER OF WICHITA

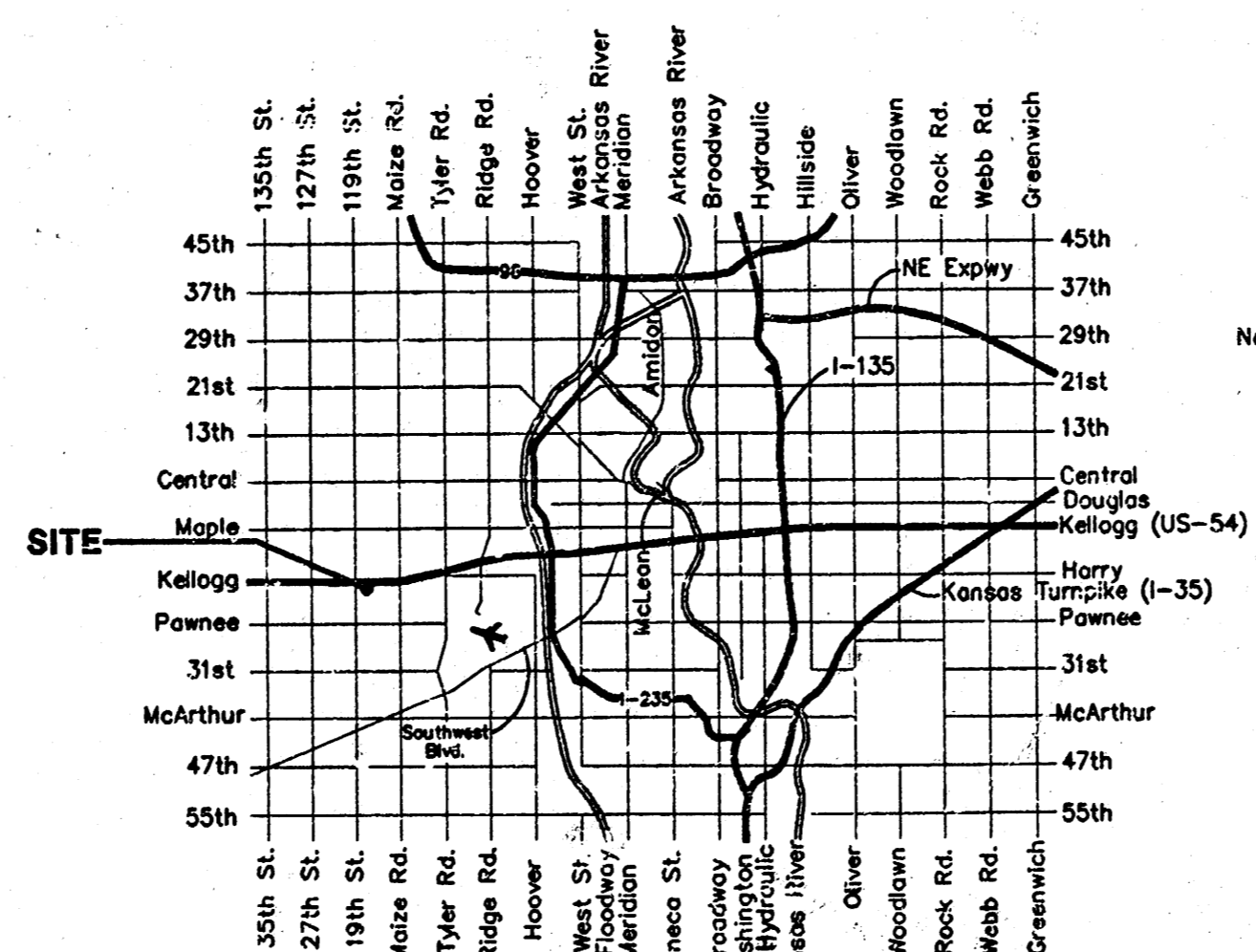
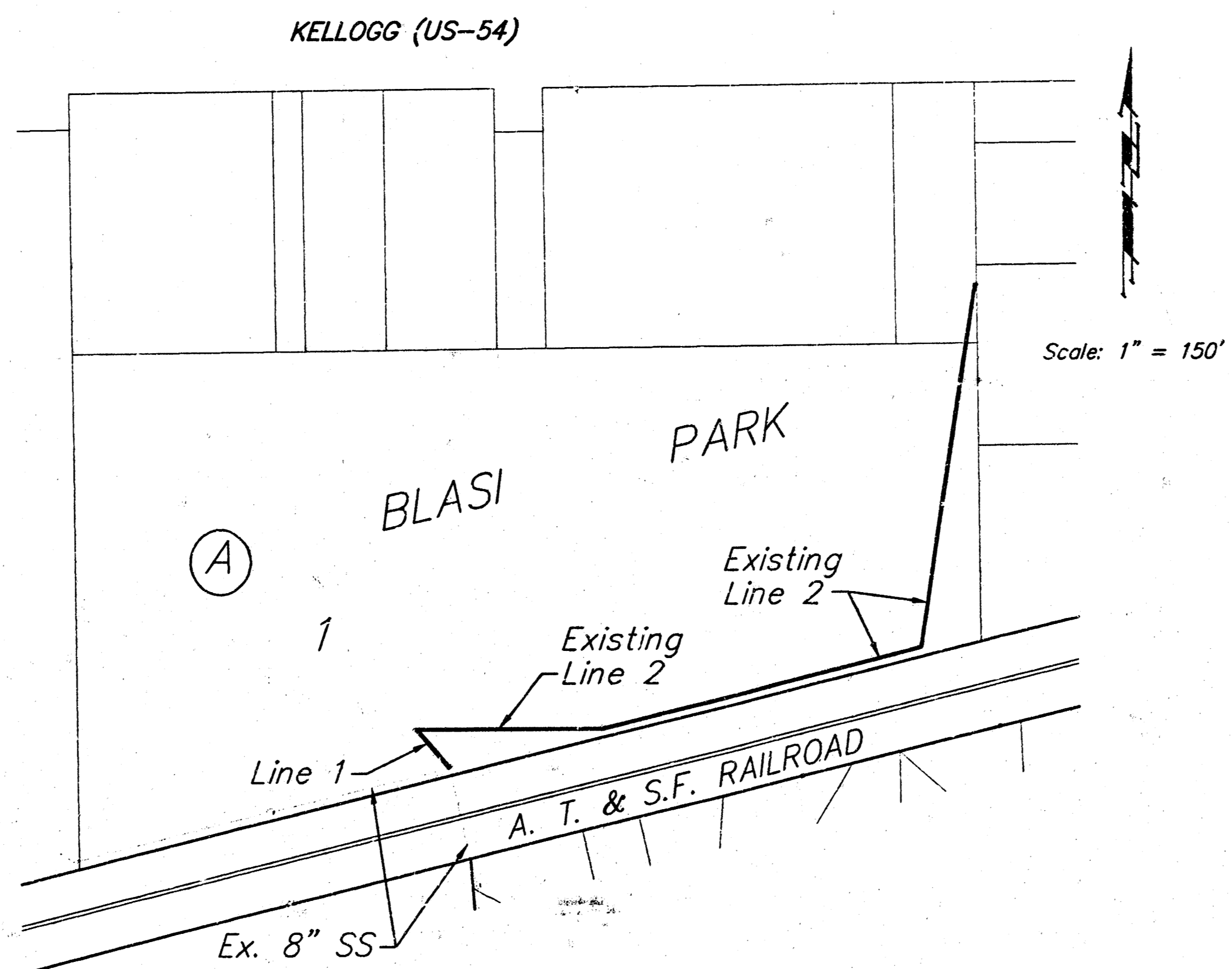
Sanitary Sewers

NOTE TO CONTRACTORS

Installation, inspection and testing for this project is to be provided by a Licensed Consulting Engineering Firm under contract with the Owner/Developer. Said inspection to be in accordance with the City of Wichita standard construction engineering practices and certified by a Licensed Professional Engineer. No work shall be performed in dedicated easements or public right-of-way by the Contractor without such inspection nor shall any work be commenced without written authorization by the City Engineer. All Construction and Materials shall comply with the City of Wichita Specifications and Standards (on file and available in the City Engineer's Office).

INDEX OF SHEETS

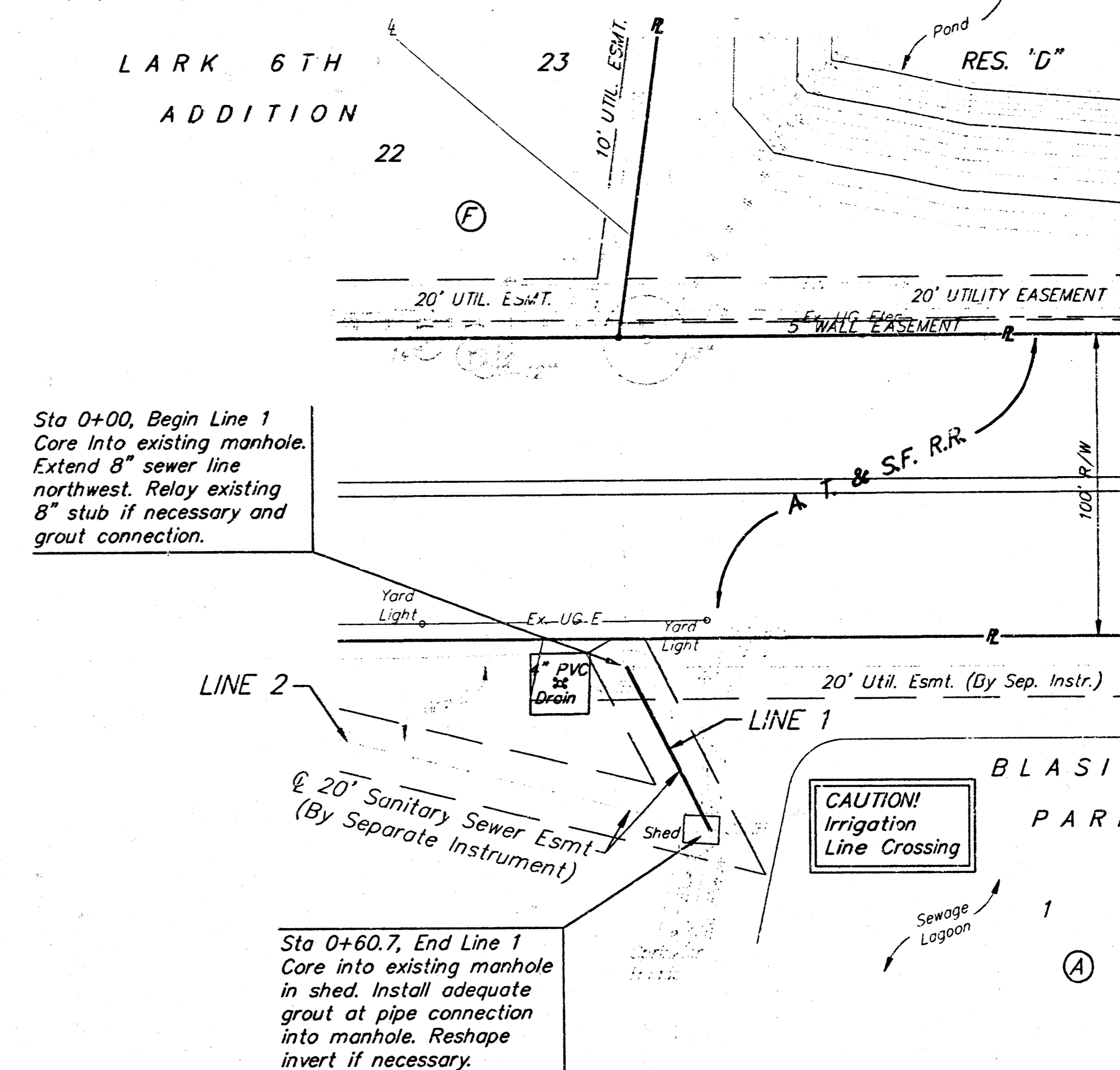
- LINE 1
- LINE 2
- RING & COVER DETAIL



Vicinity Map

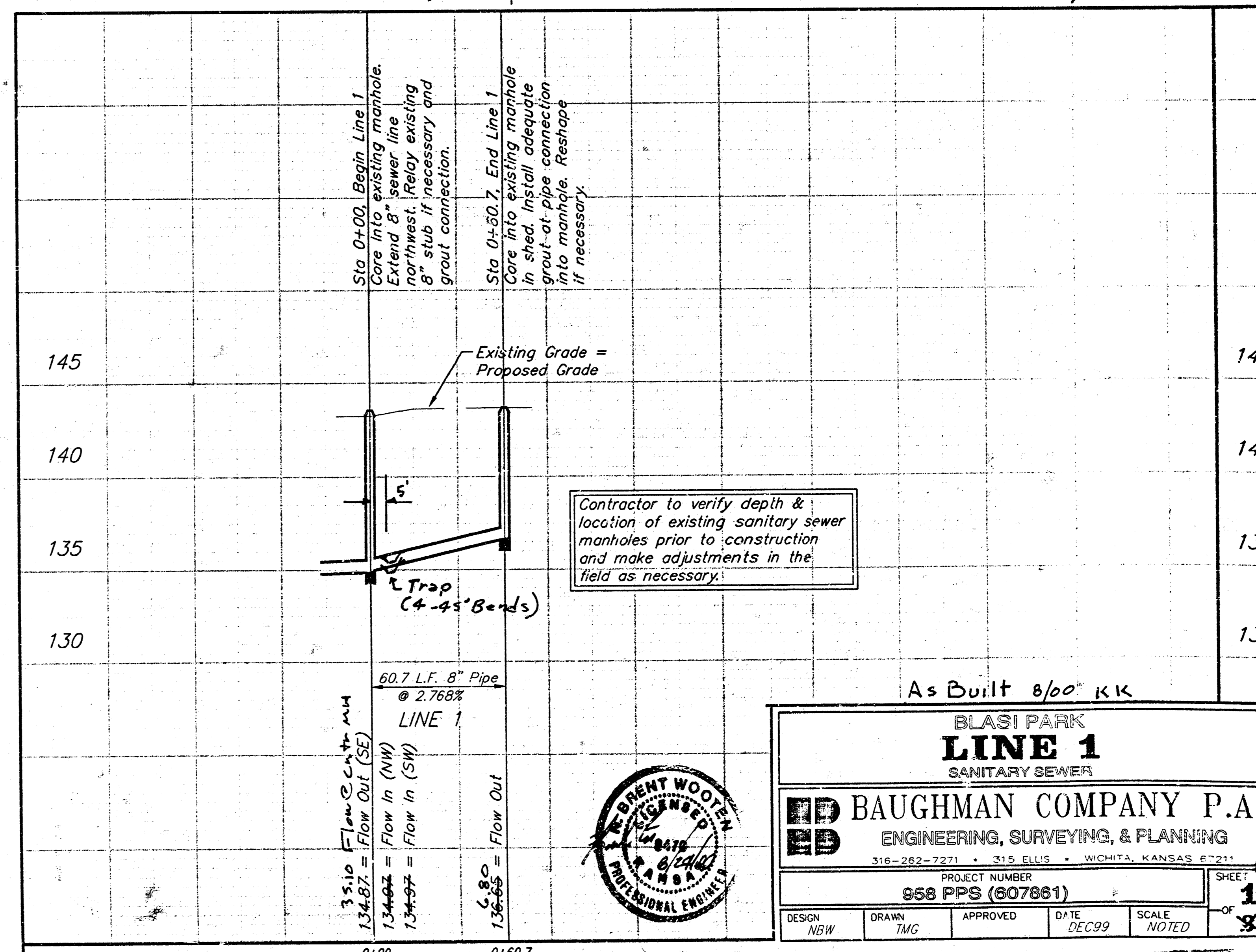
BENCHMARKS:
 "□" Cut on Top of Curb at East
 Line of Lot 18, Block A, Lark Add.
 Elev. = 144.89 (City Datum)

LARK 6TH
ADDITION



Sta 0+00, Begin Line 1
 Core into existing manhole.
 Extend 8" sewer line
 northwest. Relay existing
 8" stub if necessary and
 grout connection.

Sta 0+60.7, End Line 1
 Core into existing manhole
 in shed. Install adequate
 grout at pipe connection
 into manhole. Reshape
 invert if necessary.



As Built 8/00 KK

BLASI PARK
LINE 1
SANITARY SEWER

BAUGHMAN COMPANY P.A.
ENGINEERING, SURVEYING, & PLANNING

PROJECT NUMBER
958 PPS (607861)

DESIGN NGW DRAWN TMC APPROVED DATE DEC 99 SCALE NOTED SHEET 1 OF 1

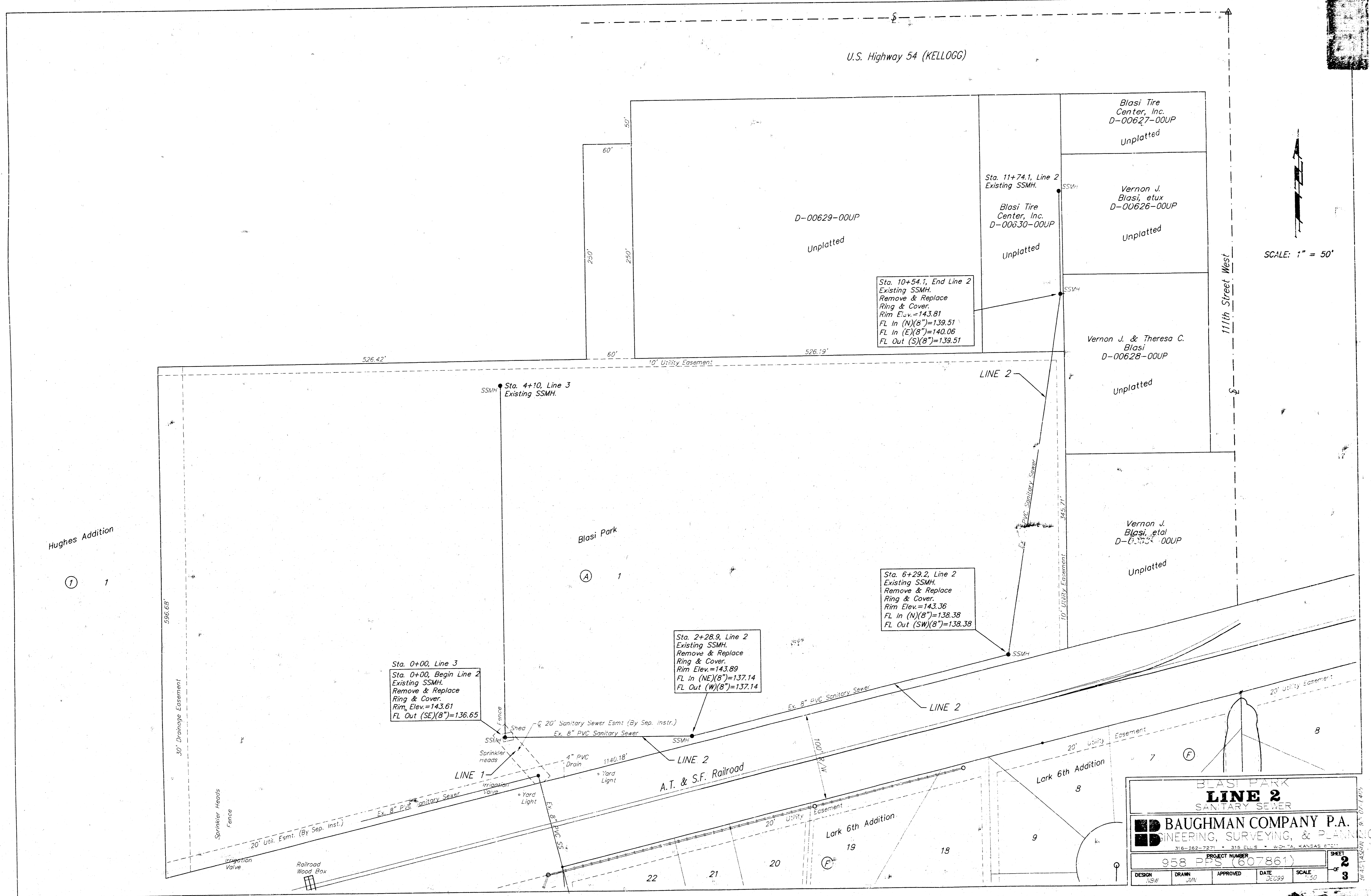
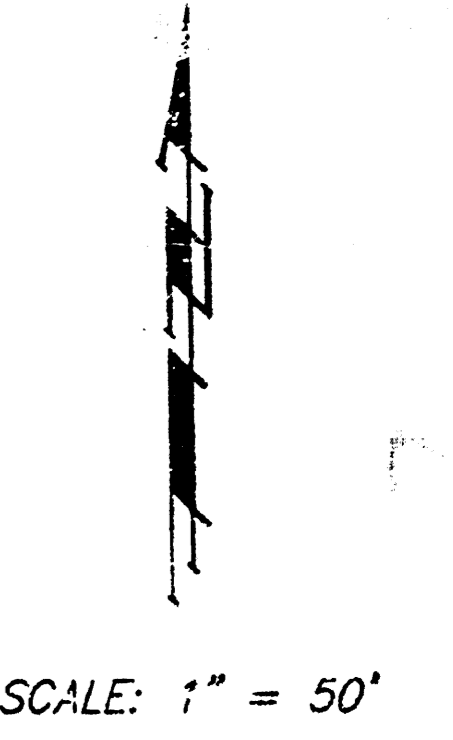


1-12-01
279822A
B121

Scale: 1" = 40' Horizontal
 1" = 5' Vertical
 - = Iron

Booked
P-16
12-15-00
R.A.L

U.S. Highway 54 (KELLOGG)



Sta. 0+00, Line 3
Sta. 0+00, Begin Line 2
Existing SSMH.
Remove & Replace
Ring & Cover.
Rim Elev.=143.61
FL Out (SE)(8")=136.65

Sta. 2+28.9, Line 2
Existing SSMH.
Remove & Replace
Ring & Cover.
Rim Elev.=143.89
FL in (NE)(8")=137.14
FL Out (W)(8")=137.14

Sta. 6+29.2, Line 2
Existing SSMH.
Remove & Replace
Ring & Cover.
Rim Elev.=143.36
FL in (N)(8")=138.38
FL Out (SW)(8")=138.38

Sta. 10+54.1, End Line 2
Existing SSMH.
Remove & Replace
Ring & Cover.
Rim Elev.=143.81
FL in (N)(8")=139.51
FL in (E)(8")=140.06
FL Out (S)(8")=139.51

Sta. 11+74.1, Line 2
Existing SSMH.
Blasi Tire Center, Inc.
D-00630-00UP
Unplatted

Blasi Tire Center, Inc.
D-00627-00UP
Unplatted

Vernon J. Blasi, et ux
D-00626-00UP
Unplatted

Vernon J. & Theresa C. Blasi
D-00628-00UP
Unplatted

Vernon J. Blasi, et ux
D-00633-00UP
Unplatted

BLASI PARK
LINE 2
SANITARY SEWER

BAUGHMAN COMPANY P.A.
ENGINEERING, SURVEYING, & PLANNING

316-282-7271 • 316 ELLIS • WICHITA, KANSAS 67211

PROJECT NUMBER
958 PPS (607861)

DESIGN	DRAWN	APPROVED	DATE	SCALE
JSW	JM		DEC 99	1"=50'

SHEET 2 OF 3