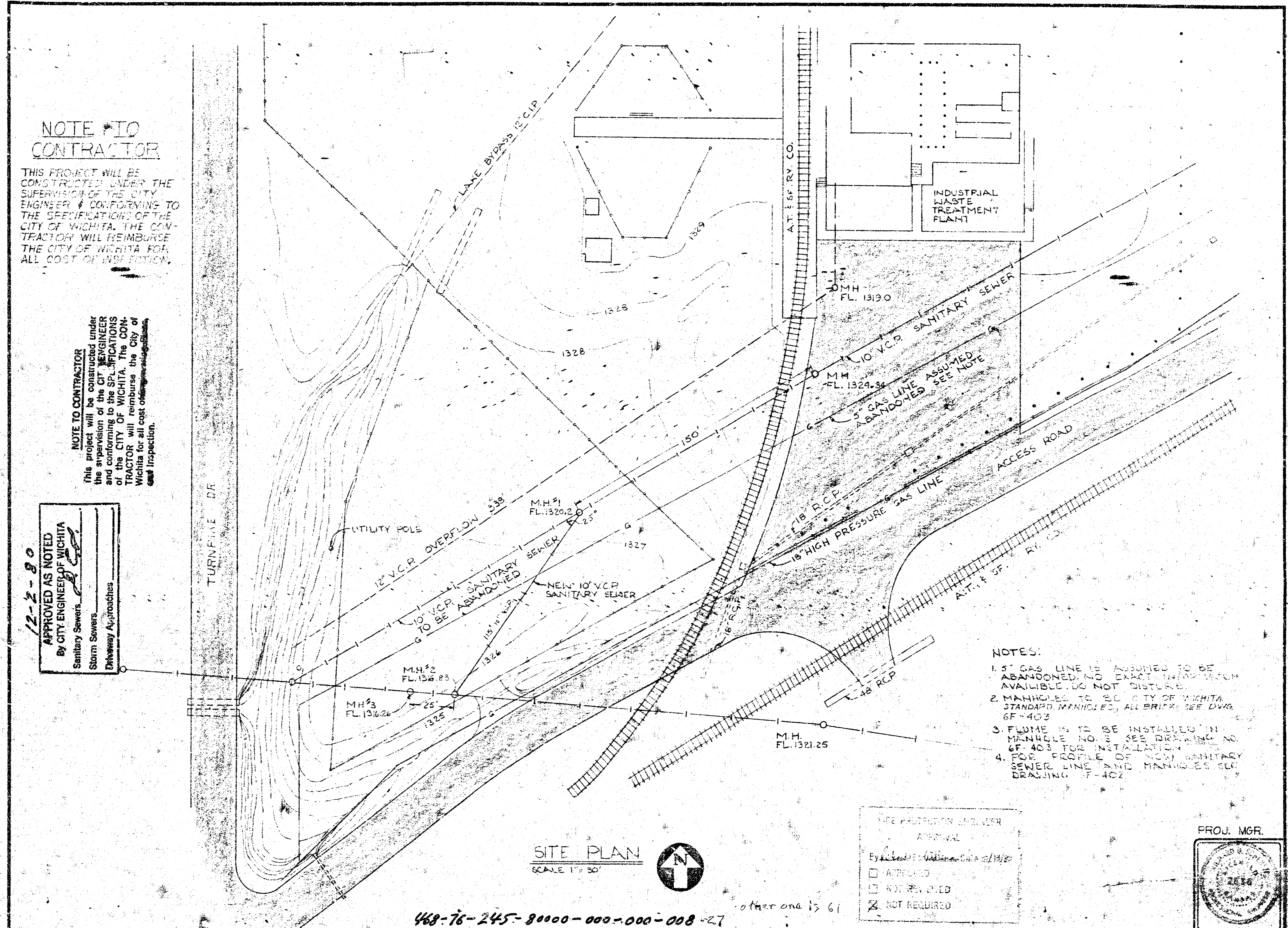


**NOTE TO CONTRACTOR**

THIS PROJECT WILL BE CONSTRUCTED UNDER THE SUPERVISION OF THE CITY ENGINEER & CONFORMING TO THE SPECIFICATIONS OF THE CITY OF WICHITA. THE CONTRACTOR WILL REIMBURSE THE CITY OF WICHITA FOR ALL COST OF INSPECTION.

**NOTE TO CONTRACTOR**  
 This project will be constructed under the supervision of the CITY ENGINEER conforming to the SPECIFICATIONS of the CITY OF WICHITA. The CONTRACTOR will reimburse the City of Wichita for all cost of inspection.

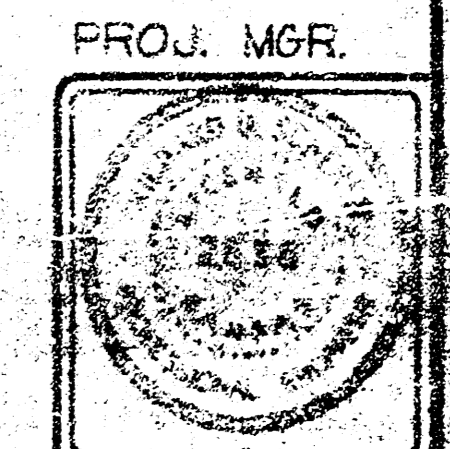
**12-2-80**  
 APPROVED AS NOTED  
 BY CITY ENGINEER OF WICHITA  
 Sanitary Sewers  
 Storm Sewers  
 Easement Approaches



- NOTES:**
1. 5" GAS LINE IS ASSUMED TO BE ABANDONED. NO EXACT INFO. CHECK AVAILABLE. DO NOT DISTURB.
  2. MANHOLES TO BE CITY OF WICHITA STANDARD MANHOLES. ALL BRICKS SEE DWG. GF-403.
  3. FLOWMETER IS TO BE INSTALLED IN MANHOLE NO. 3. SEE DRAWING NO. GF-403 FOR INSTALLATION.
  4. FOR PROFILE OF NEW SANITARY SEWER LINE AND MANHOLES SEE DRAWING GF-402.

**SITE PLAN**  
 SCALE 1" = 30'

TYPE PROTECTION AND USER APPROVAL  
 Eye checked by: [Signature] 12/2/80  
 APPROVED  
 NOT REVIEWED  
 NOT REQUIRED



468-76-245-80000-000-000-008-27 other one is 61

CITY PROJ. # 468-76-245-80000-000-000-008

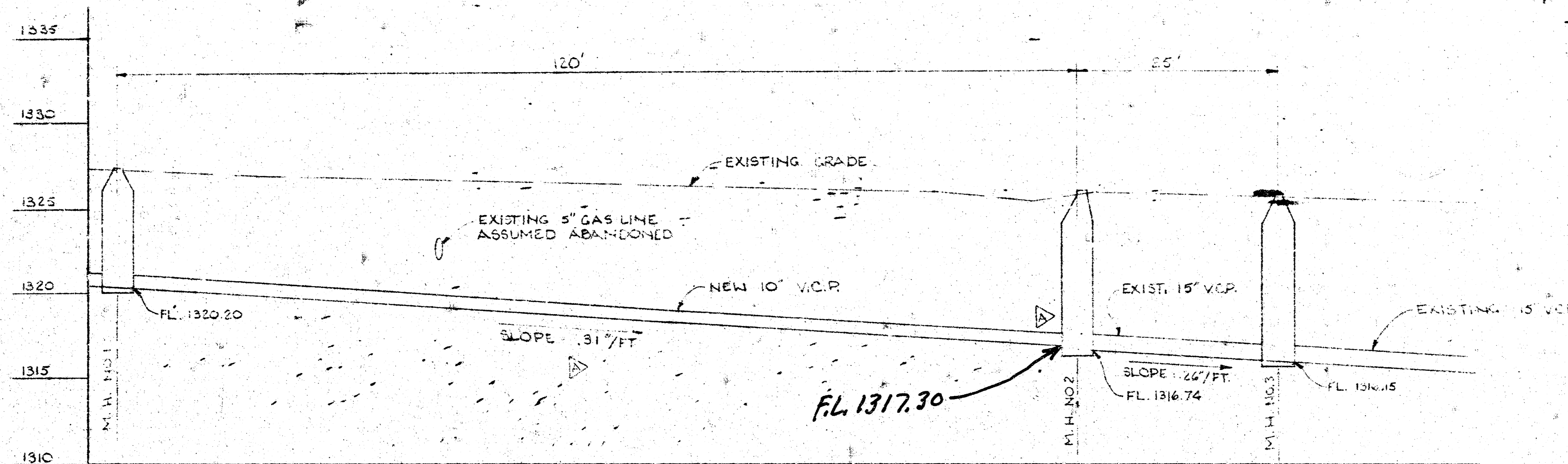
REV.	DATE	BY	DESCRIPTION
1	12-2-80	RSM/LEW	REVISION TO DWG# # 402 & 403. CHANGED PRE LAST MH# TO BRICK. CHANGED INV. @ MH# 2 ON NEW 10" VCP. ADDED NOTES.

**PROVIDE & INSTALL RECORDING WATER FLOW METER**

15 HOURS 10-0-80  
 17 HOURS 10-0-80

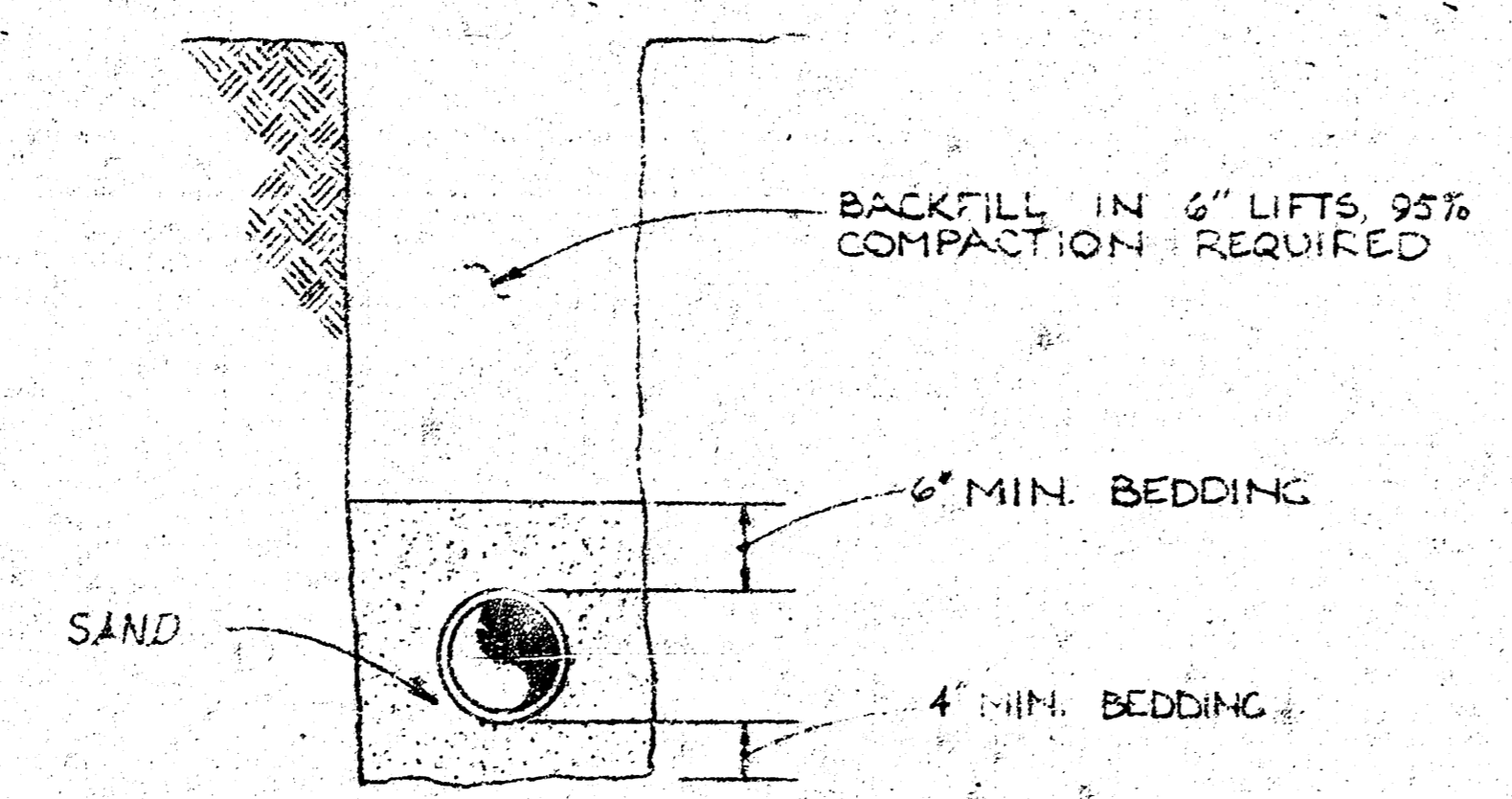
**FACILITIES ENGINEERING**

GF-401-402  
 GF-2934



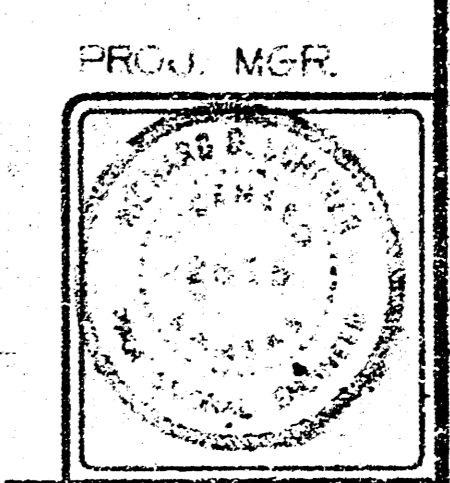
PROFILE - MANHOLE #1 THRU #3  
 HORIZ. SCALE 1" = 10'  
 VERT. SCALE 1" = 2'

- NOTES:
1. FOR LOCATION AND LAYOUT PLAN OF SANITARY SEWER AND MANHOLES SEE DWG. WF-401
  2. FOR MANHOLE DETAILS SEE DWG. WF-403
  3. NEW SANITARY SEWER BETWEEN MANHOLE NO. 1 AND MANHOLE NO. 2 IS TO BE 10" V.C.P.
  4. TOP OF NEW 10" V.C.P. TO MATCH TOP OF EXISTING 15" S.S. @ MH. NO. 2



TYPICAL TRENCH DETAIL  
 NO. SCALE

APPROVED BY: \_\_\_\_\_  
 DATE: \_\_\_\_\_  
 APPROVED  
 NOT REVIEWED  
 NOT REQUIRED

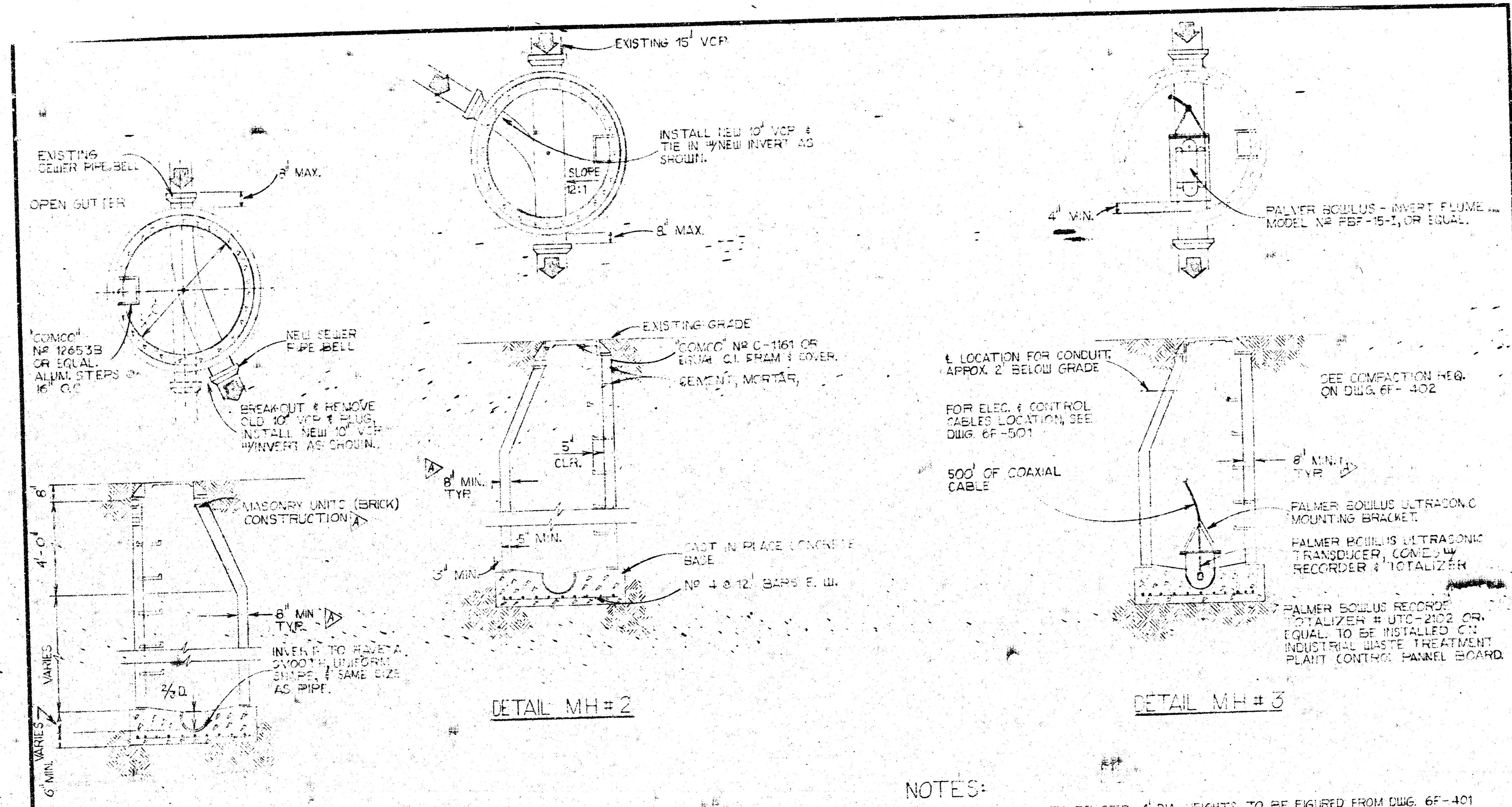


REV.	BY	DATE	DESCRIPTION
1	REM	11-13-00	REVERSED SLOPE OF NEW 10" V.C.P.

PROVIDE & INSTALL RECORDING WATER FLOW METER

APPROVED  
 NOT REVIEWED  
 NOT REQUIRED

S. HORTS  
 FACILITIES ENGINEERING  
 69-402-4  
 69-2331

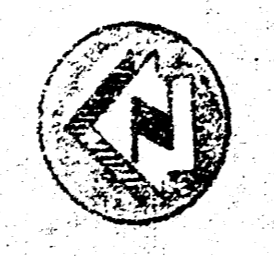


DETAIL MH#1

DETAIL MH#2

DETAIL MH#3

MANHOLE DETAILS



$\frac{3}{8}'' = 1'-0''$

NOTES:

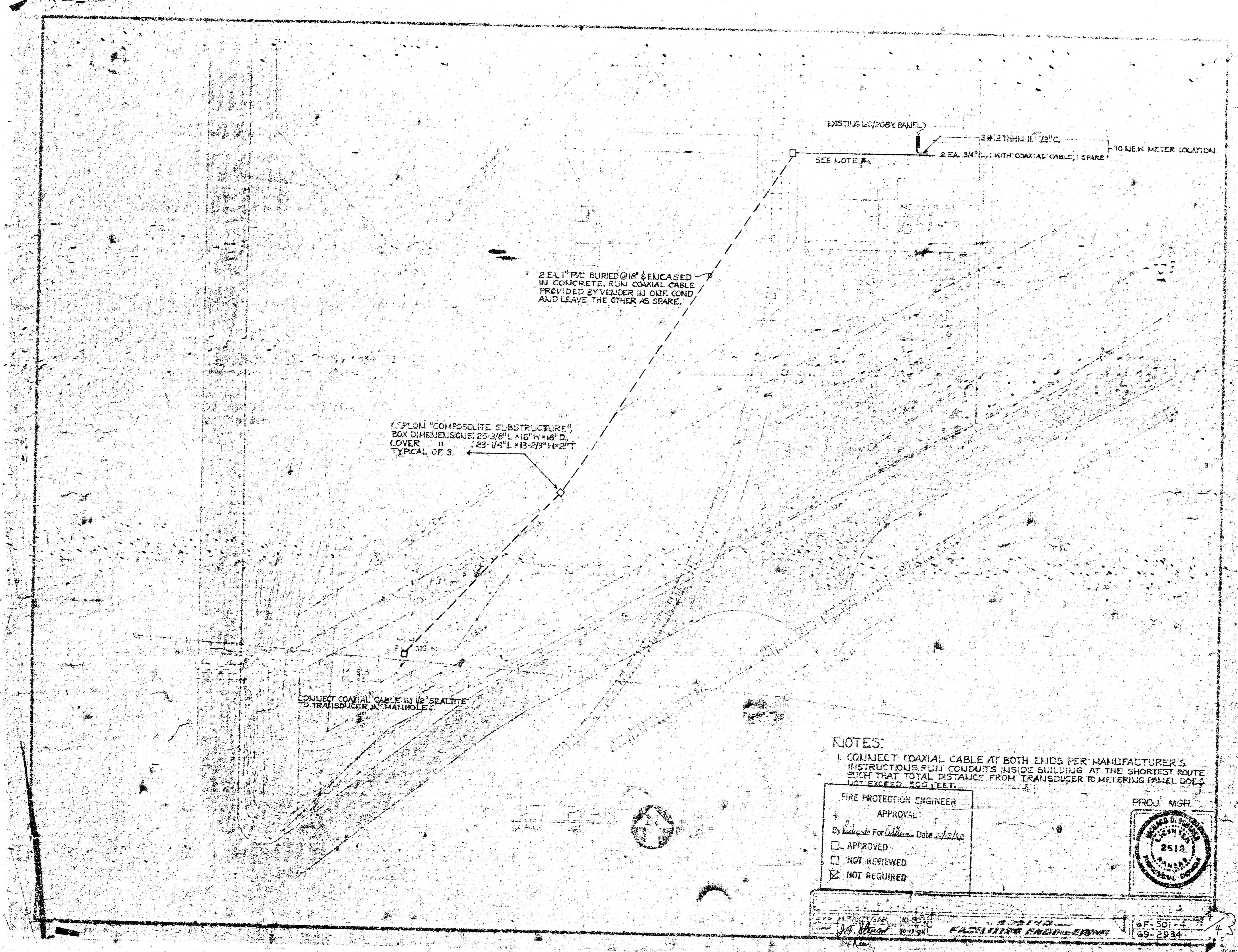
1. ALL MANHOLES TO BE STD. 4' DIA. HEIGHTS TO BE FIGURED FROM DWG. 6F-401
2. ALL MANHOLE TOPS TO BE FLUSH WITH FINISH GRADE
3. FOR LOCATION OF MANHOLES SEE DWG. 6F-401
4. ALL MANHOLES TYP. EXCEPT INVERTS & HEIGHTS
5. NEW LINE TO BE FILLED WITH WATER, FOR LEAKAGE TEST IN ACCORDANCE WITH M.F.C.
6. ALL MANHOLES TO BE CONSTRUCTED OF BRICK & MUST BE WATER TIGHT WITHOUT LEAKS.
7. NEW 10" LINE MUST BE AIR TESTED & TELEVIEWED BY CITY PERSONNEL.

REV.	DATE	BY	DESCRIPTION
A	11-80	LEW	Changed Pre-Cast MHS to BRICK & NOTES #6 & 7

PROVIDE & INSTALL A RECORDING WATER FLOW METER

LEWELSON  
QUARRS  
FACILITIES ENGINEERING

PROJ. MGR.  
7615  
6F-503-1  
69-0934



2 EA. 1" PVC BURIED @ 18" & ENCASED IN CONCRETE. RUN COAXIAL CABLE PROVIDED BY VENDOR IN ONE COND. AND LEAVE THE OTHER AS SPARE.

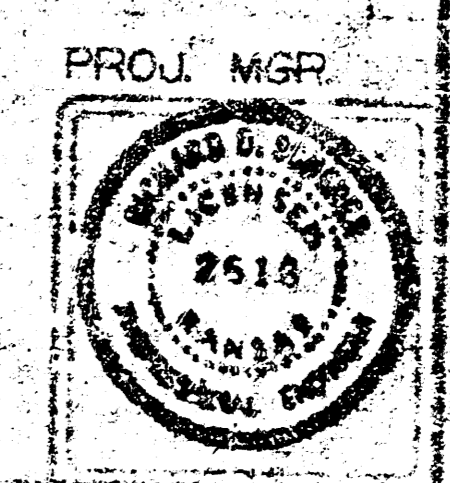
EXPLOR "COMPOSITE SUBSTRUCTURE"  
BOX DIMENSIONS: 23'-3/8" L x 16' W x 48" D.  
COVER " " : 23'-1/4" L x 13'-2 1/2" W x 21" T  
TYPICAL OF 3.

CONNECT COAXIAL CABLE IN 1/2" SEALTITE TO TRANSDUCER IN MANHOLE.

EXISTING 2" (208V) PANEL  
SEE NOTE #1  
3 # 1/2 THHN 110V AC  
2 EA. 3/4" C. WITH COAXIAL CABLE, 1 SPARE  
TO NEW METER LOCATION

NOTES:  
1. CONNECT COAXIAL CABLE AT BOTH ENDS PER MANUFACTURER'S INSTRUCTIONS. RUN CONDUITS INSIDE BUILDING AT THE SHORTEST ROUTE SUCH THAT TOTAL DISTANCE FROM TRANSDUCER TO METERING PANEL DOES NOT EXCEED 500 FEET.

FIRE PROTECTION ENGINEER  
APPROVAL  
By *[Signature]* For *[Signature]* Date *11/12/10*  
 APPROVED  
 NOT REVIEWED  
 NOT REQUIRED



DATE: 10-30-10  
*[Signature]*  
FACILITIES ENGINEER  
AF-501-4  
69-2934