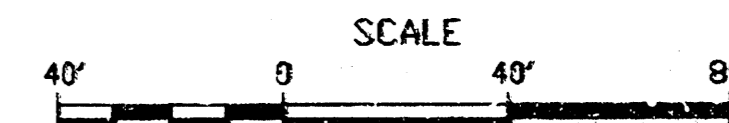
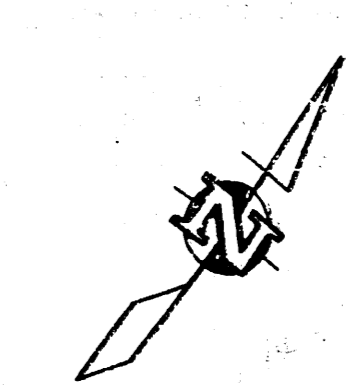


SANITARY SEWER IMPROVEMENTS TO SERVE Reserve B, Bradford North 2nd Addition

Project Number
1087 PPS (607861)

CITY OF WICHITA, KANSAS
Michael E. Lindebak, P. E., City Engineer



BENCHMARK
Cut "X" on sidewalk S.W.
cor. of Reserve B Elev= 167.47

GENERAL NOTES

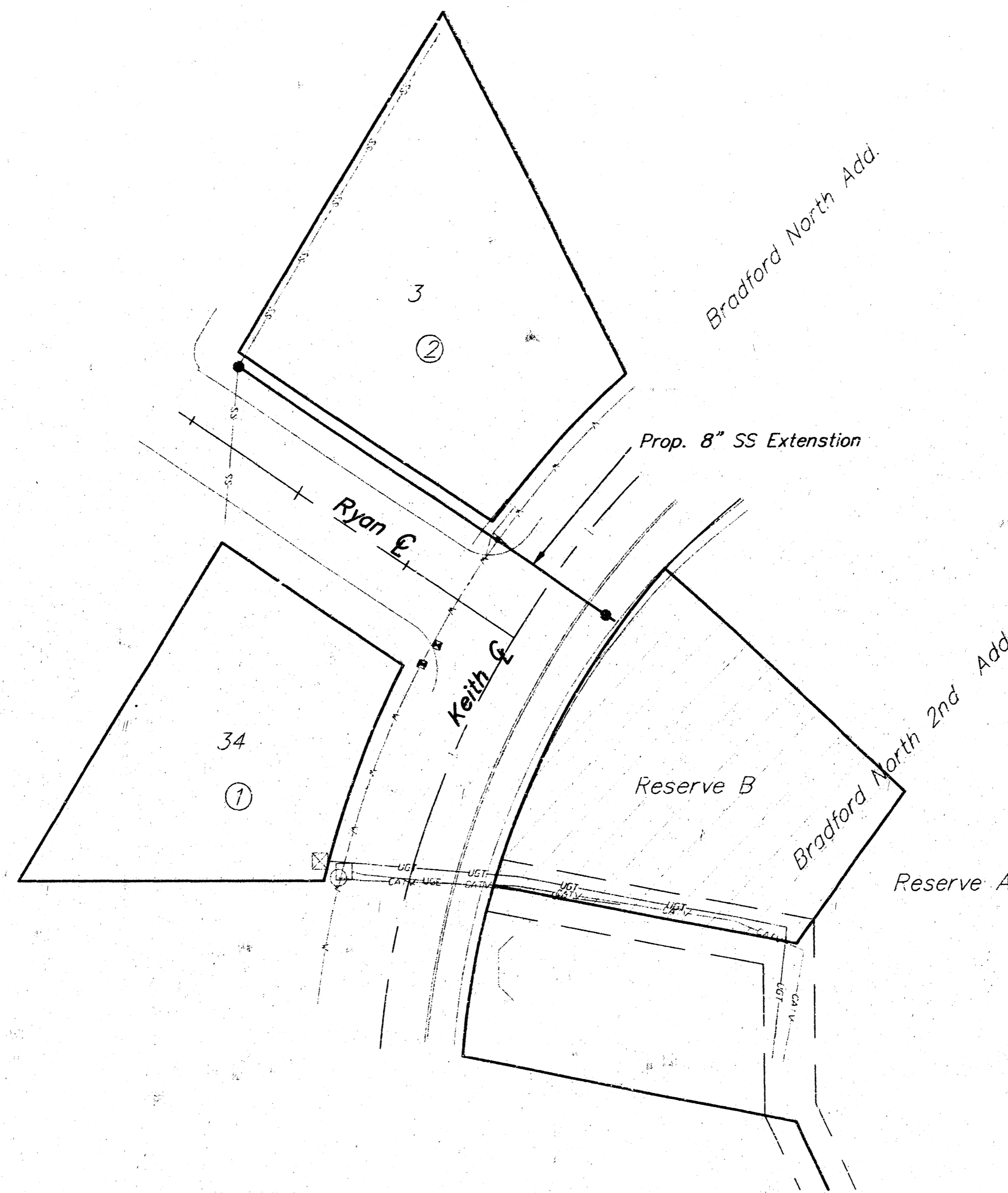
1. Contractor will be required to provide notice to utility companies a minimum of twenty-four (24) hours prior to any excavation, as follows:

Kansas One-Call	687-2470
-----------------	----------

The Contractor must notify the following in case of an emergency:

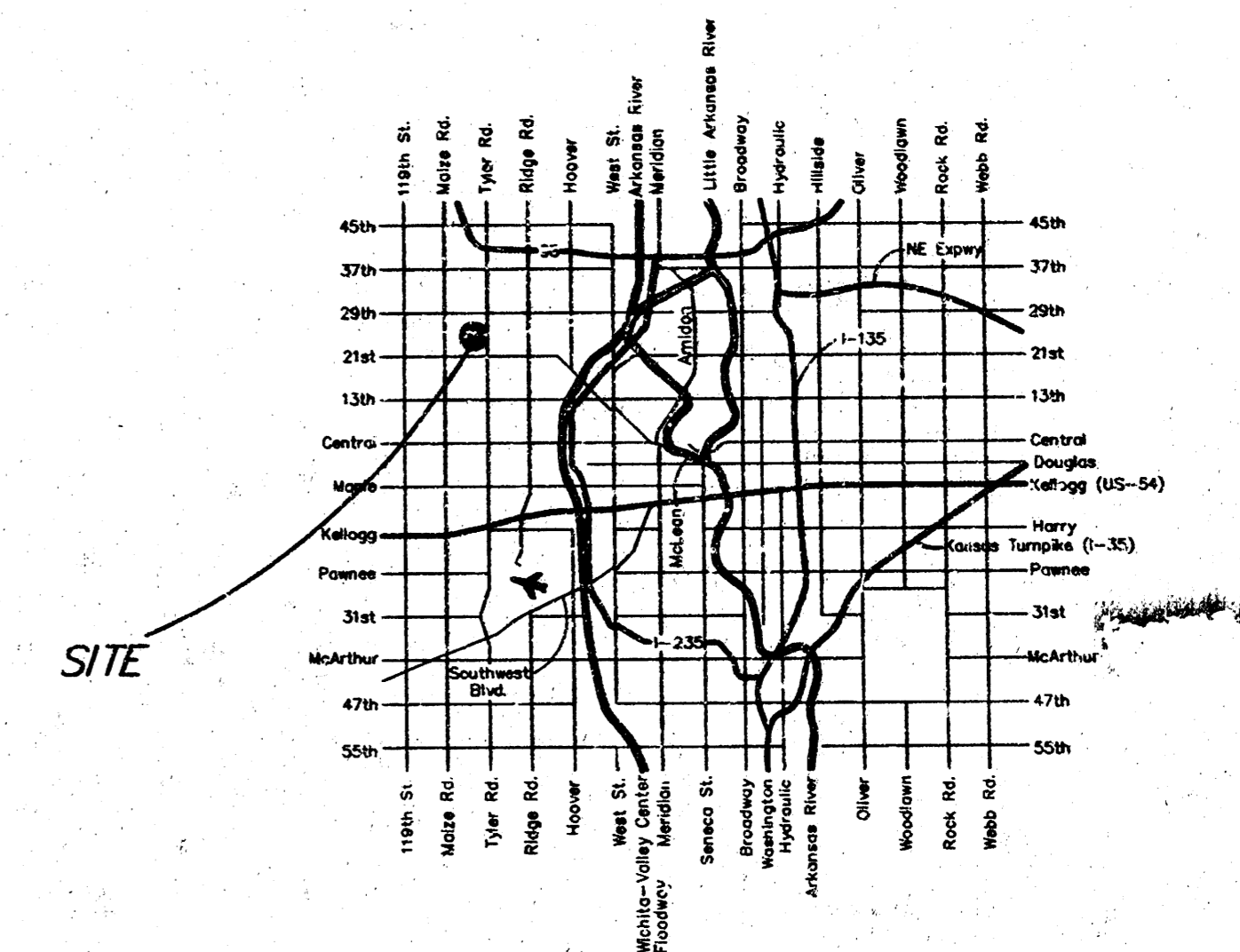
Cablevision	262-4270
or	263-2061
K.P.L. Gas Service Company	383-8650
Kansas Gas & Electric Company	383-8600
Peoples Natural Gas Gas	942-8811
or	1800-303-0357
Southwestern Bell Telephone Company	1-571-2611
City of Wichita Water Department	268-4908
City of Wichita Sewer Department	268-4071
Kansas Gas Service	832-3168
or	832-3167
2. Exist. utilities and their locations, as shown on the plans, represent the best information obtainable for design. Location information has been obtained from the various utility companies and is either from company record drawings or company-provided field locations. The Contractor will be required to work around existing utilities which do not conflict with proposed construction.
3. The Contractor to verify utility locations prior to construction of this project.
4. Utility service and installation shall be coordinated with the respective utility owners. Contacts are:

Kansas Gas Service	Jim Stoltz	832-3122
K.G.E.	Russ Chitwood	261-6251
Wichita Water	Paul Bryant	268-4555
	Joe Botinely	268-4908
Southwestern Bell	Jim Tabin	268-2759
5. Traffic affected by the construction of this project shall be handled in accordance with the latest edition of the Manual on Uniform Traffic Control Devices.
6. All lawn/turf areas disturbed by construction of proposed improvements shall be restored with the same grass/sod as existing. Restoration of disturbed areas shall include, but not be limited to, top soil preparation, seeding, mulch and/or reseeding. All seeding/sodding work shall be in accordance with the City of Wichita standard specifications and the City of Wichita administrative regulation No. AR78 which governs cleanup and replacement following construction. All costs for this work shall be subsidiary to the lump sum price bid for "Site Restoration."



INDEX

- 1 Cover
- 2 Pk. and Profile

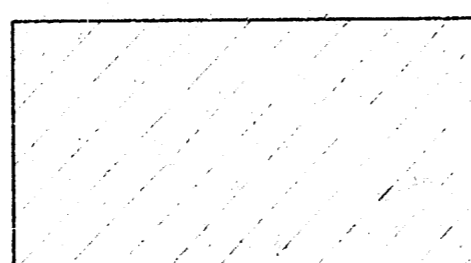


LOCATION MAP

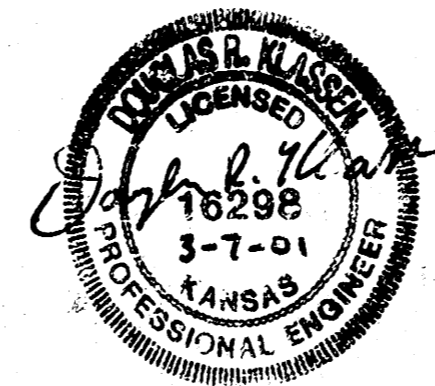
AS-BUILT

Date: 8/13/01
Signed: *[Signature]*

Booked
P-182
RDL
8/22/01



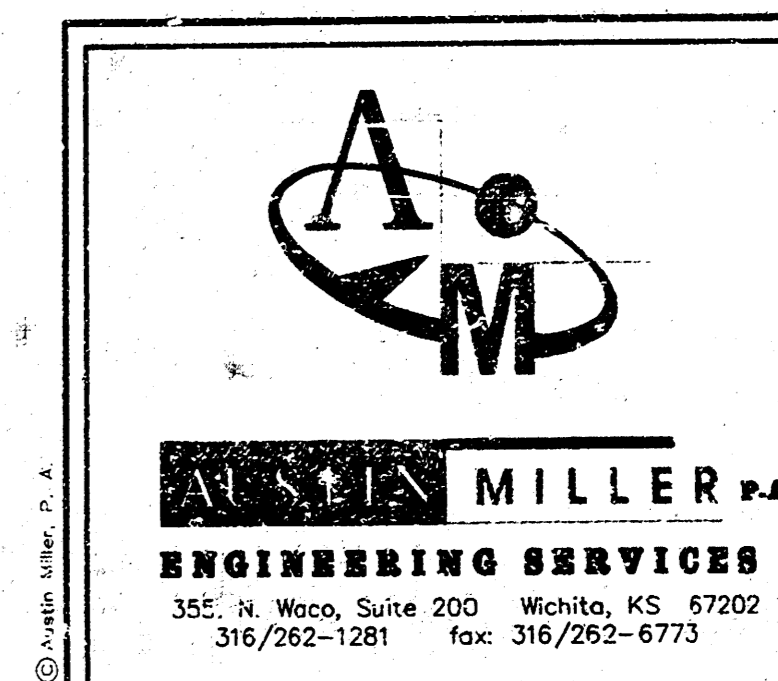
Benefit District

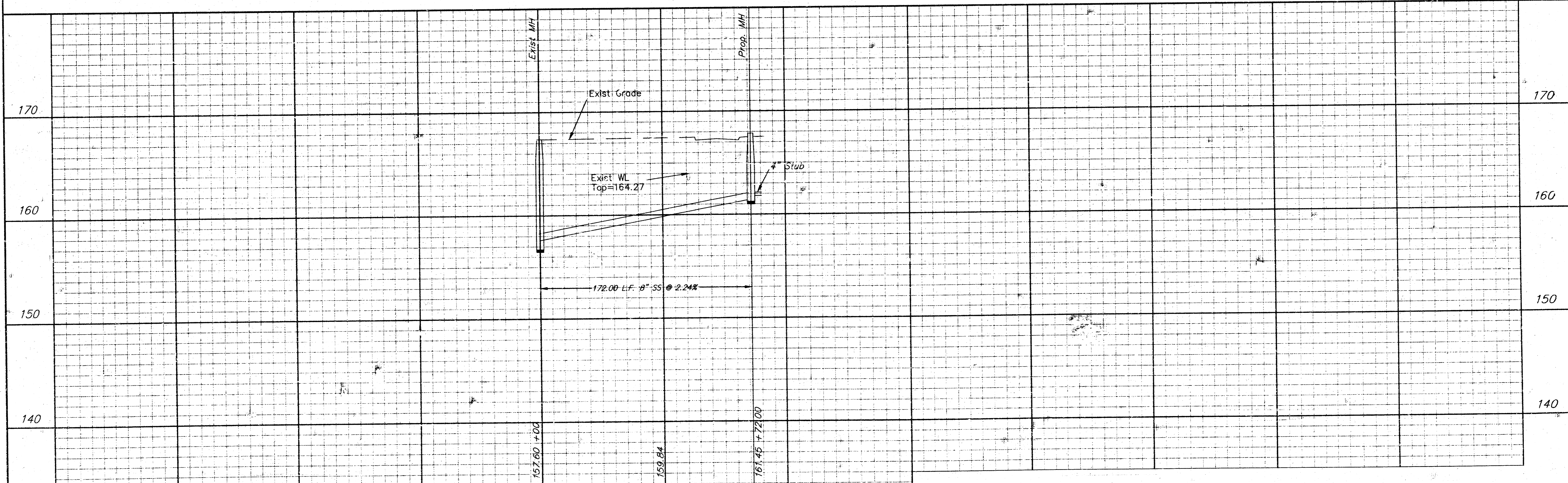
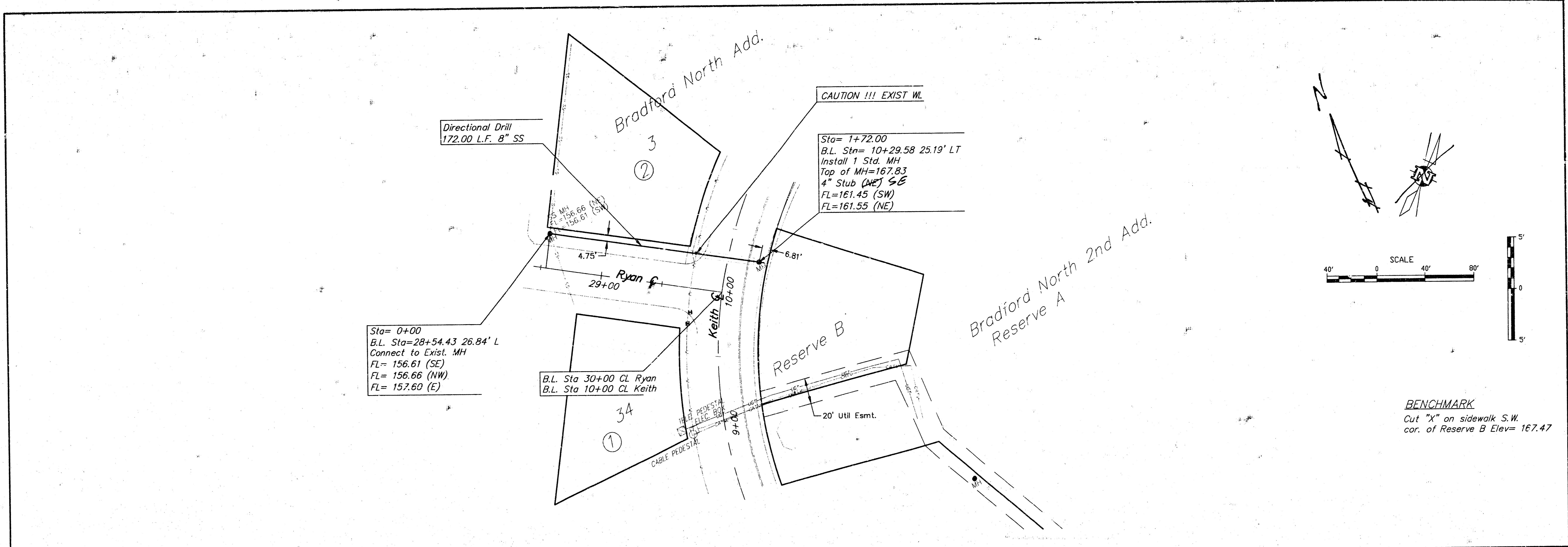


APPROVED AS NOTED BY CITY ENGINEER OF WICHITA

SANITARY SEWERS VRH 3/7/01

Inspection and testing for this project are to be provided by a Licensed Consulting Engineering Firm under contract with the Owner/Developer. Said inspection is to be in accordance with the City of Wichita standard construction engineering practices and certified by a Licensed Civil Engineer. No work shall be performed in dedicated easements or public right-of-way by the Contractor without such inspection nor shall work be commenced without written authorization by the City Engineer. All construction and materials shall comply with the City of Wichita Specifications and Standards (on file and available in the City Engineer's Office).





	DESIGN	DRAWN	FILE	DATE	SCALE	PROJECT NUMBER	AM. NO.	Bradford Homeowners Association S.S. Extension Wichita, Kansas	SHEET
	rr	db	ss1	2/6/01	1"=40'	1087 PFS (607861)	01026		2
								REVISED	2/15/01