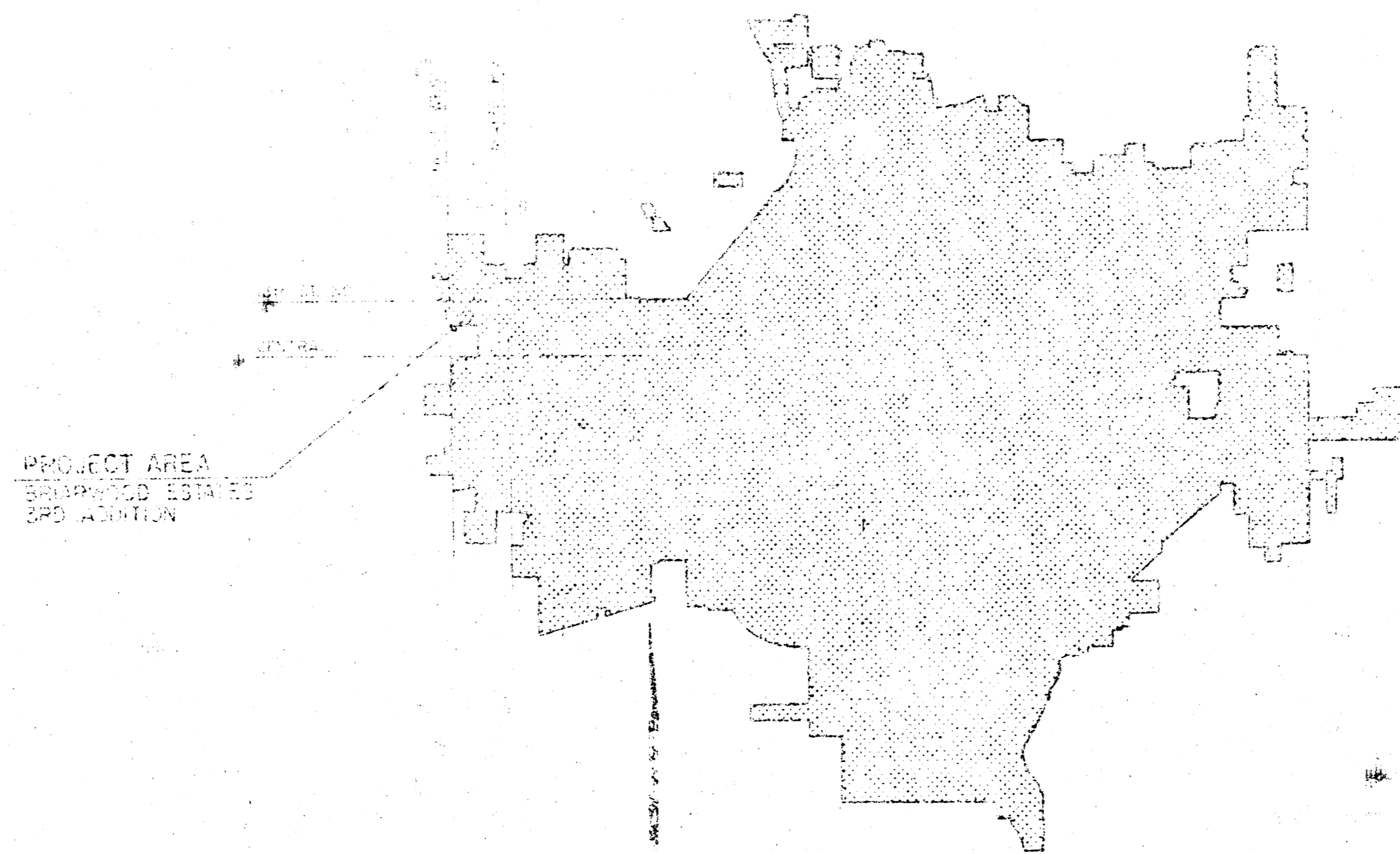


CONSTRUCTION PLANS FOR
SANITARY SEWER EXTENSION
TO SERVE

BRIARWOOD ESTATES 3RD ADDITION

THE CITY OF WICHITA,
SEDGWICK COUNTY, KANSAS

CHECK OF SHEETS
SHEET NO. 1 TITLE SHEET
SHEET NO. 2 SANITARY SEWER NOTES
SHEET NO. 3 SANITARY SEWER

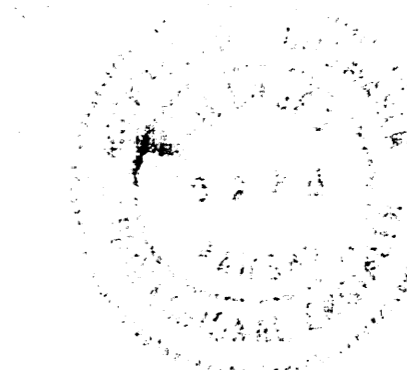


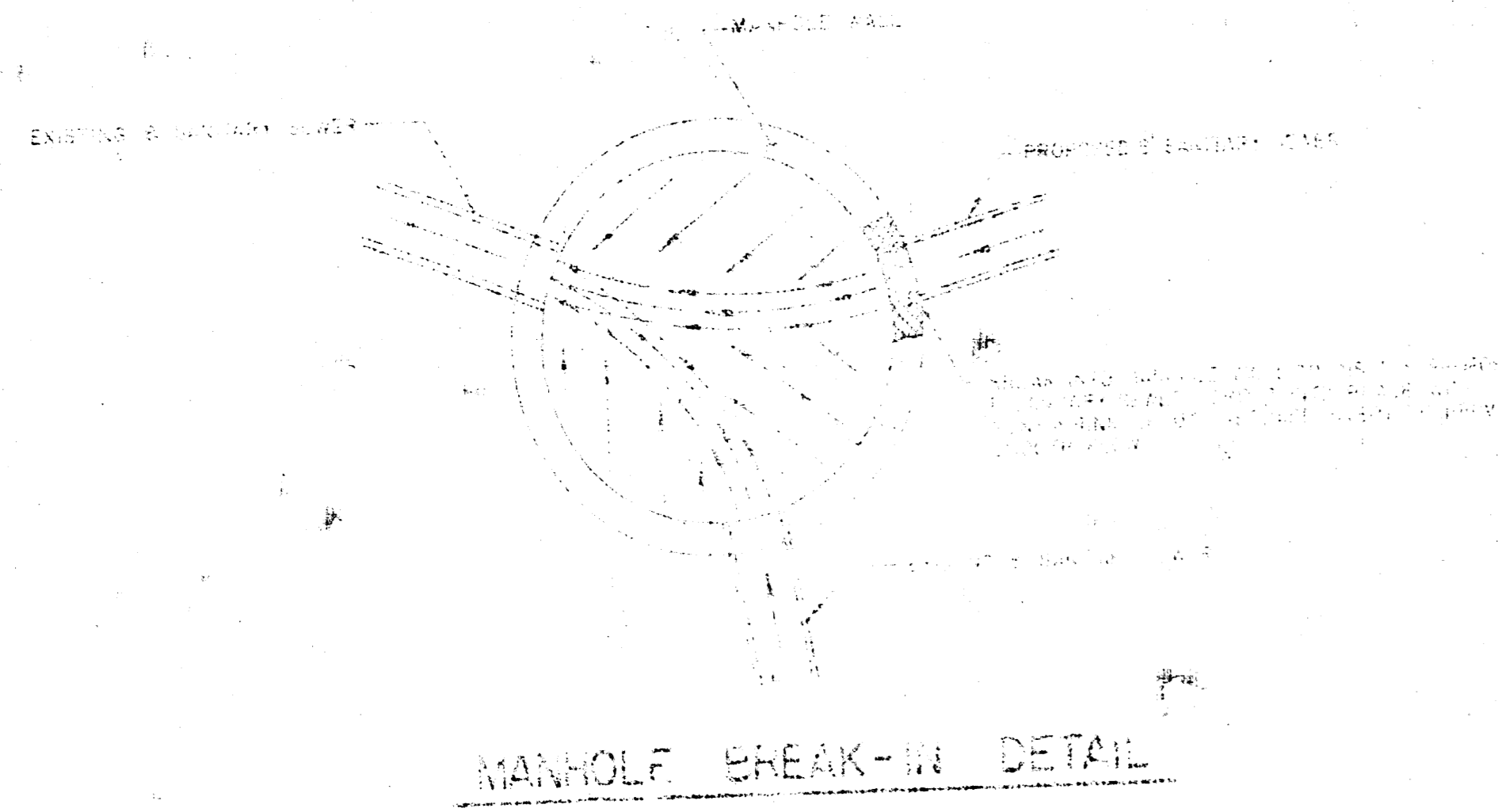
CITY OF WICHITA PROJECT NO. 468-76-245-80000-000-000-008

APRIL, 1984

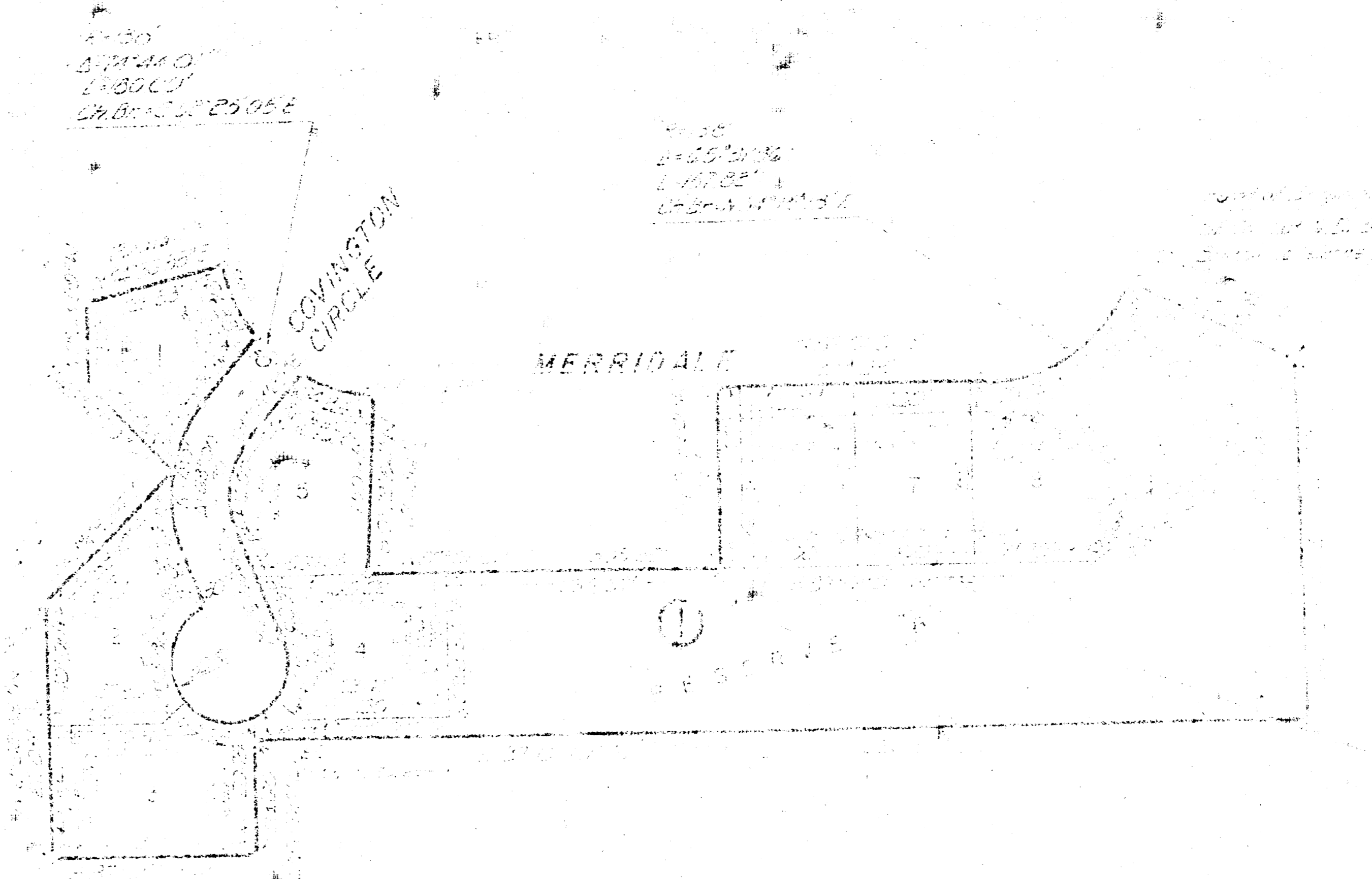
PLANS PREPARED BY

PROFESSIONAL ENGINEERING CONSULTANTS, P.A.
ENGINEERS
WICHITA, KANSAS

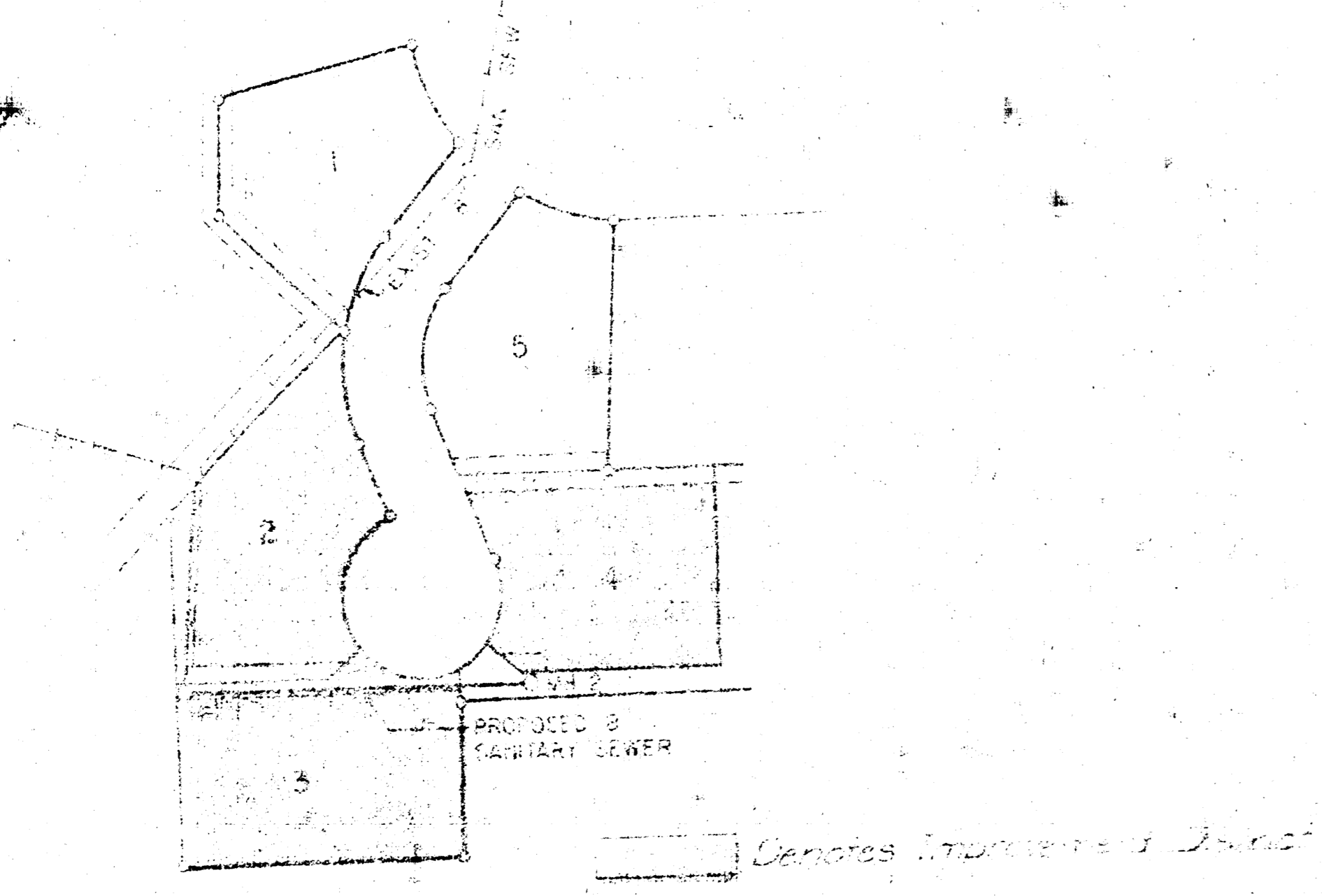




Scale 1"=100'
 December 8, 1983
 Oak Park - City 5th Brass
 Top in center, 25' north
 1.30' east of S 1/4 Cor.
 Sec 7, T29S, R11E
 Elev 1345.83 M.S.L.
 Lev. 5721



BRIARWOOD ESTATES 3RD ADDITION
 TO WICHITA, KANSAS

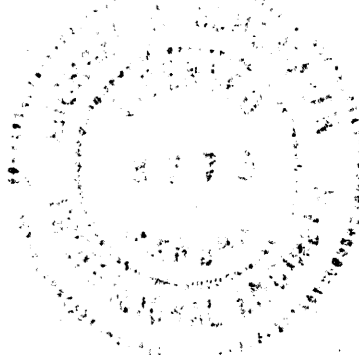
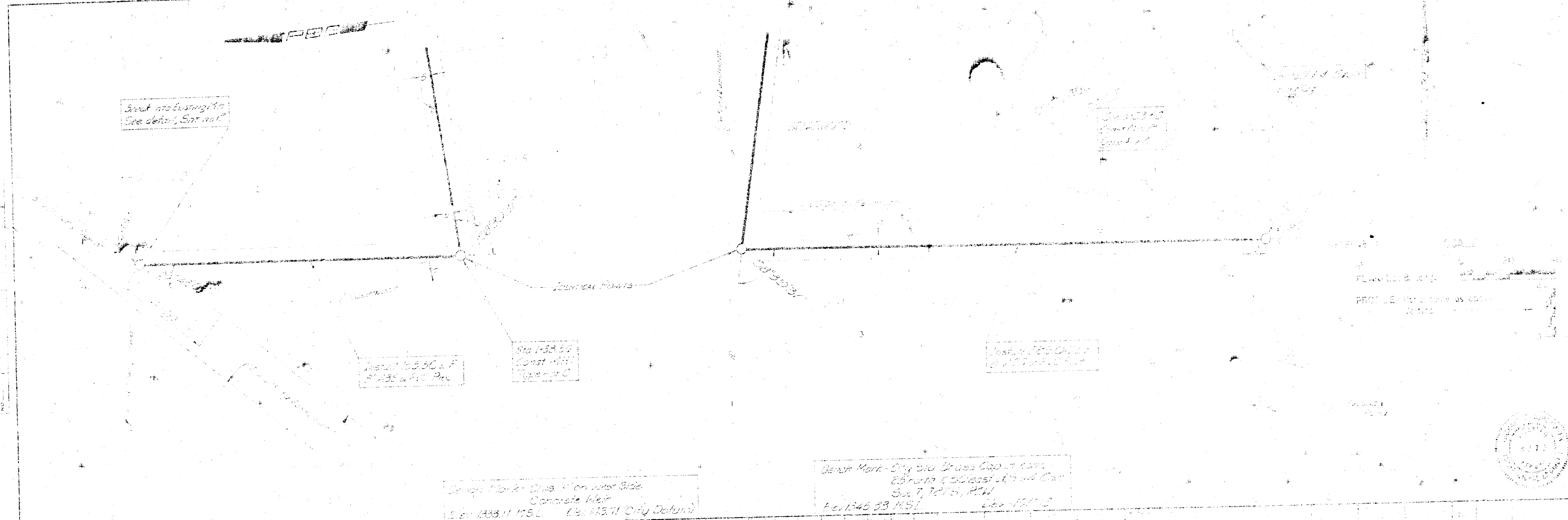


KEY MAP

GENERAL NOTES

1. THE SEWER SYSTEM IS TO BE INSTALLED IN ACCORDANCE WITH THE CITY OF WICHITA SEWER REGULATIONS AND THE KANSAS SANITARY SEWER CODE.
2. THE SEWER SYSTEM IS TO BE INSTALLED IN ACCORDANCE WITH THE CITY OF WICHITA SEWER REGULATIONS AND THE KANSAS SANITARY SEWER CODE.
3. THE SEWER SYSTEM IS TO BE INSTALLED IN ACCORDANCE WITH THE CITY OF WICHITA SEWER REGULATIONS AND THE KANSAS SANITARY SEWER CODE.
4. THE SEWER SYSTEM IS TO BE INSTALLED IN ACCORDANCE WITH THE CITY OF WICHITA SEWER REGULATIONS AND THE KANSAS SANITARY SEWER CODE.
5. THE SEWER SYSTEM IS TO BE INSTALLED IN ACCORDANCE WITH THE CITY OF WICHITA SEWER REGULATIONS AND THE KANSAS SANITARY SEWER CODE.

	CITY OF WICHITA, KANSAS BRIARWOOD ESTATES 3RD ADDITION
	KEY MAP & GENERAL NOTES JOHN L. LEEB, PE, CIVIL ENGINEER PROFESSIONAL ENGINEERING CONSULTANTS, P.A. WICHITA, KANSAS
	SHEET NO. 112 OF 112 DATE: APRIL 1983



LATERAL N, MAIN 12

PROFESSIONAL ENGINEER CONSULTANT
 STATE OF WISCONSIN
 No. 10,000
 JOHN A. LINDEN
 1000 W. WISCONSIN ST.
 MILWAUKEE, WIS. 53233

FILMED FROM THE BEST AVAILABLE COPY....