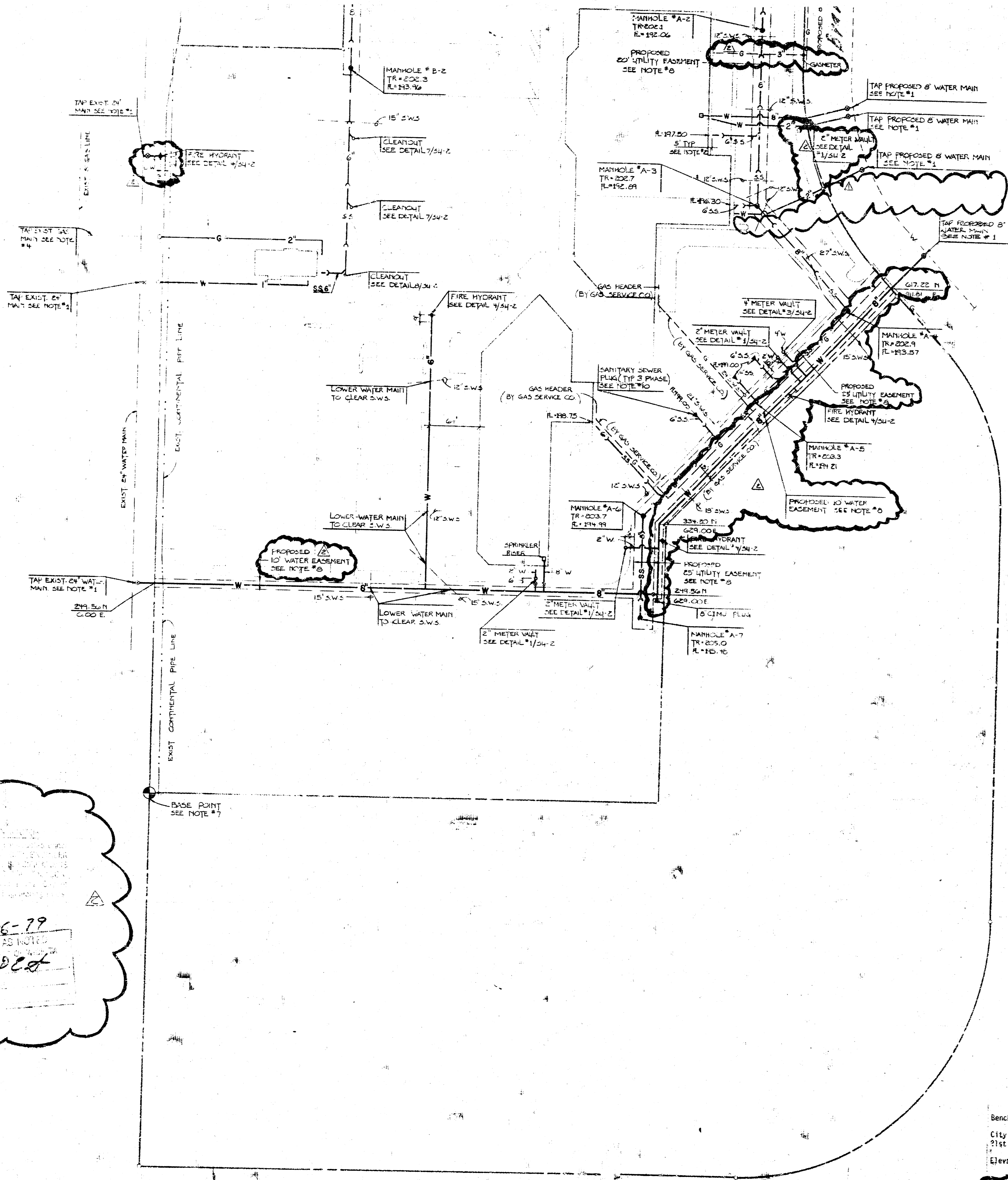
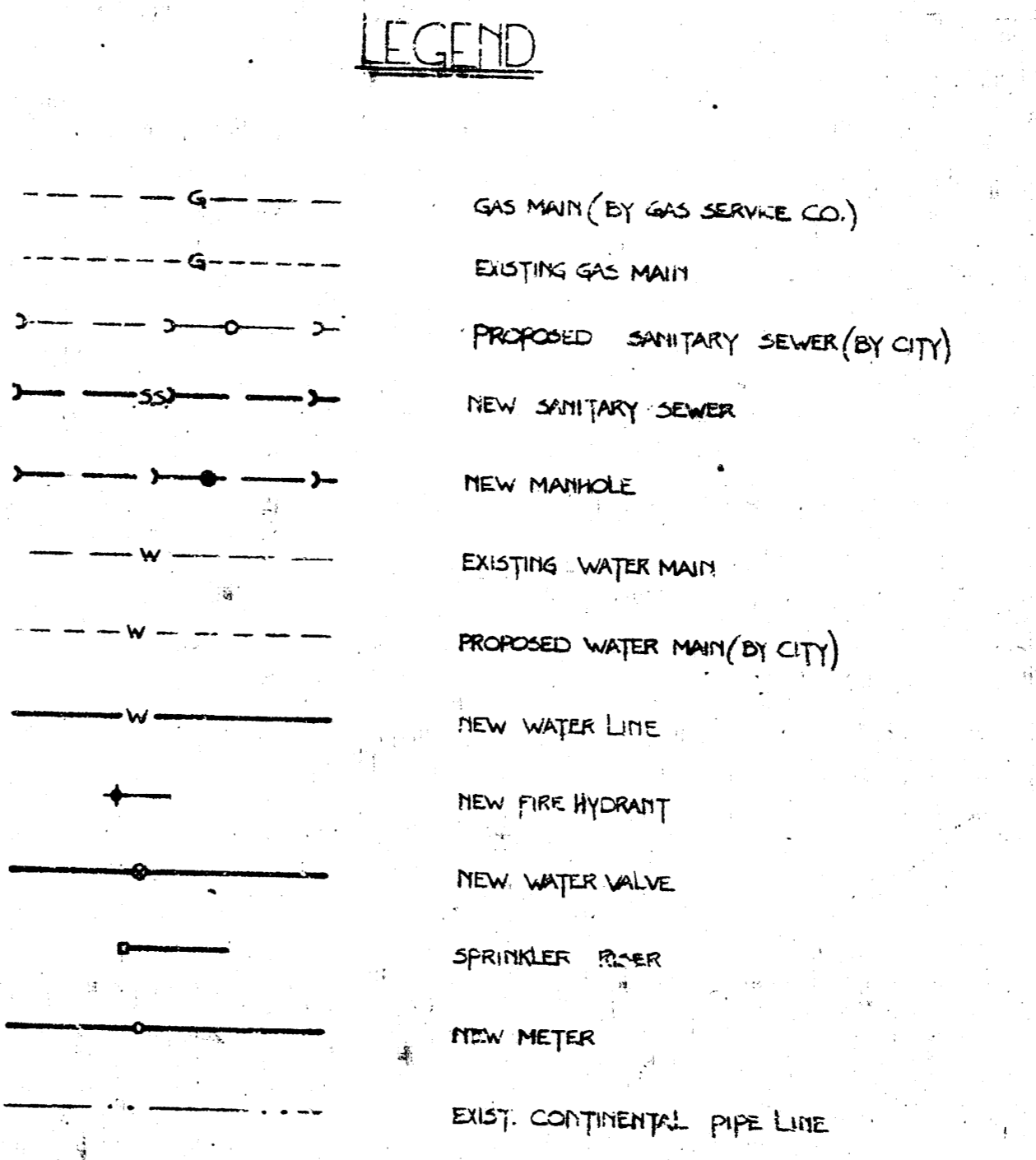


11-16-79
 REVISIONS AS NOTED
 BY [Signature]
 [Signature]

AVAILABLE FROM THE BEST
 COPY



- NOTES
- Contractor to make arrangements with the "City of Wichita Water Department" to tap existing and proposed water mains and extend service, including fees, inspections, engineering, materials, etc., provided by City.
 - Contractor to verify and coordinate exact extent, location and elevation of utilities with existing drawings.
 - Contractor to provide temporary plugs for all utilities.
 - Contractor to make arrangements with the "Gas Service Company" to tap gas main and extend service. Contractor to pay all expenses involved in providing tap and service, including fees, inspections, meter, regulator, and other materials.
 - Contractor to make arrangements with "City of Wichita" to construct manholes over proposed 8" sanitary sewer.
 - All manhole and meter covers to be bolted or locked (see Specifications Section 270, Part 1, Paragraph E-1).
 - Locate all sanitary sewer structures from "Base Point". Assume property line north from "Base Point" to be true north.
 - Contractor to make arrangements with City of Wichita Water Department to install 8" main line along south side of property and pay all cost charged by Water Department. Contractor to also hire surveyor to verify final locations of all utilities and prepare easements as shown or as required by the various utility companies.
 - Contractor to coordinate connections and elevations of proposed sanitary sewer with the City of Wichita.
 - Contractor to install plugs for sewer and water stubs provided for future building.
 - Flooding and setting of sand backfill will only be permitted if specially approved by soils engineer. Soils engineer to certify that compaction was completed as required by the specifications.
 - Provide guard posts around all fire hydrants. See Detail 9/SW-2.



SITE UTILITIES PLAN
 SCALE - 1"=60'

Bench Mark:
 City standard disc, 45.4' east and 49.4' north of the intersection of
 21st Street and Woodlawn Avenue
 Elevation = 200.65

CITY OF WICHITA PROJECT NUMBERS
 SANITARY SEWER - 405-76-215-00071-000-000-000
 WATER - 587-90-925-00703-000-000-001-001

Lot 2, Blk. 1, Northborough Addn.

FOR CONSTRUCTION: 1/2" P

REVISIONS		
DATE	ITEM	NO.
11/16/79	REVISIONS AS NOTED FOR CITY APPROVAL	1

LAW/KINGDON, P.A.
 210 S. MARKET STREET, WICHITA, KANSAS 67202
 ARCHITECTS & ENGINEERS

Copyright © 1978 Law/Kingdon, P.A.

DRAWN	CHECKED
JA/JRJ	KM, R.F.

RELATED DRAWINGS

SHELL	DETAILS	STRUCTURE	MECHANICAL	ELECTRICAL	OTHER

SEQUENCE NUMBER

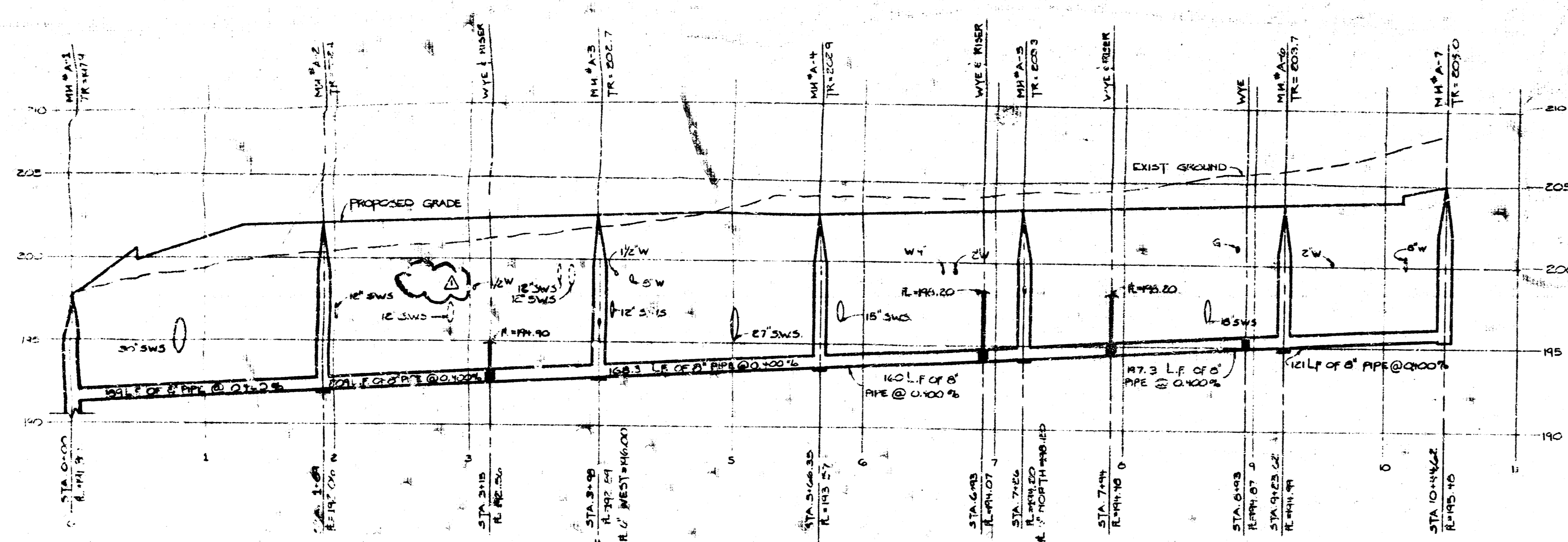
OF SHEETS

BRITTANY CENTER
 21st & Woodlawn
 WICHITA, KANSAS
 PROJECT NUMBER 7788

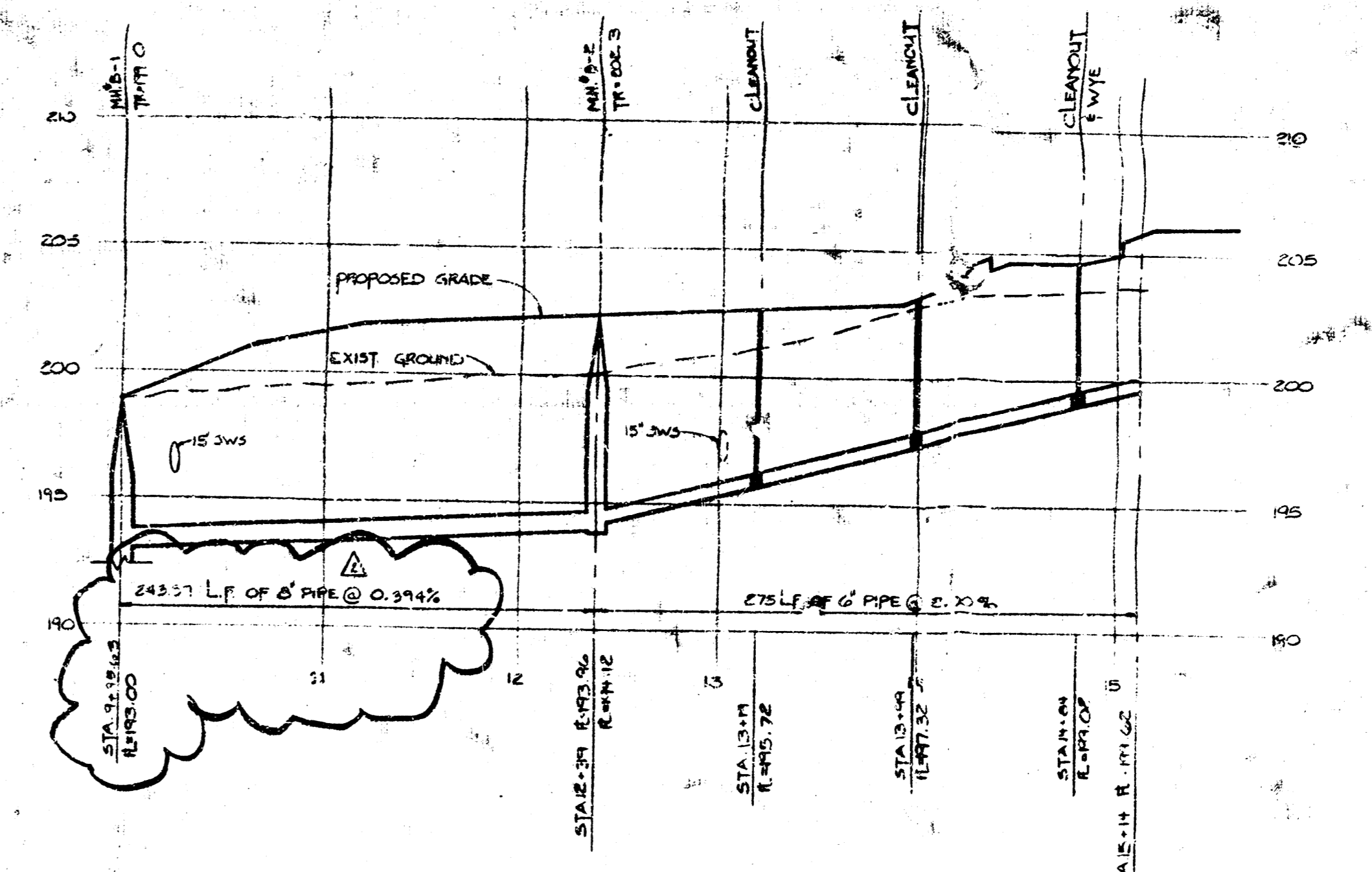
KEY PLAN

SITE	
TENANT	SHEET TITLE
	SITE UTILITIES PLAN
TENANT NUMBER	SHEET NUMBER
	1

SSU-1
 OF 2 SHEETS



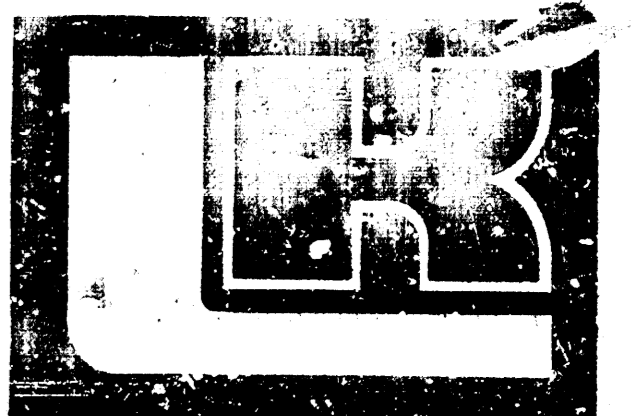
A SANITARY SEWER PROFILE



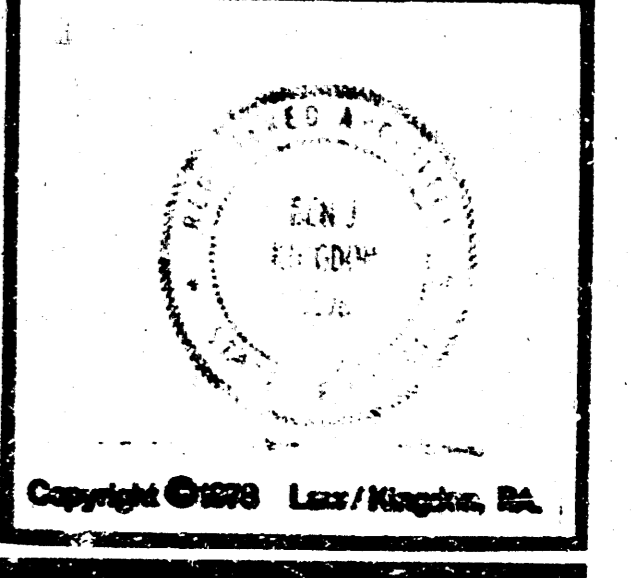
B SANITARY SEWER PROFILE

PRINTS ISSUED		
DATE	PURPOSE	NO.
12/17/19	FOR CONSTRUCTION	1
1/27/20	FOR CONSTRUCTION	2

REVISIONS		
DATE	ITEM	NO.
12/23/19	REMOVE SCHEDULED CHG.	1
1/16/20	FOR CITY APPROVAL	2



LAW/KINGDON, P.A.
 510 N. MARKET STREET, SUITE 200
 WICHITA, KANSAS 67202
 REGISTERED PROFESSIONAL ENGINEER



DATE	BY	CHECKED
1/27/20	JA	RM

RELATED DRAWINGS	
SHELL	
DETAILS	
STRUCTURE	
MECHANICAL	
ELECTRICAL	
OTHER	

BRITTANY CENTER
 21st & Woodlawn
 WICHITA, KANSAS

PROJECT NUMBER: 7782

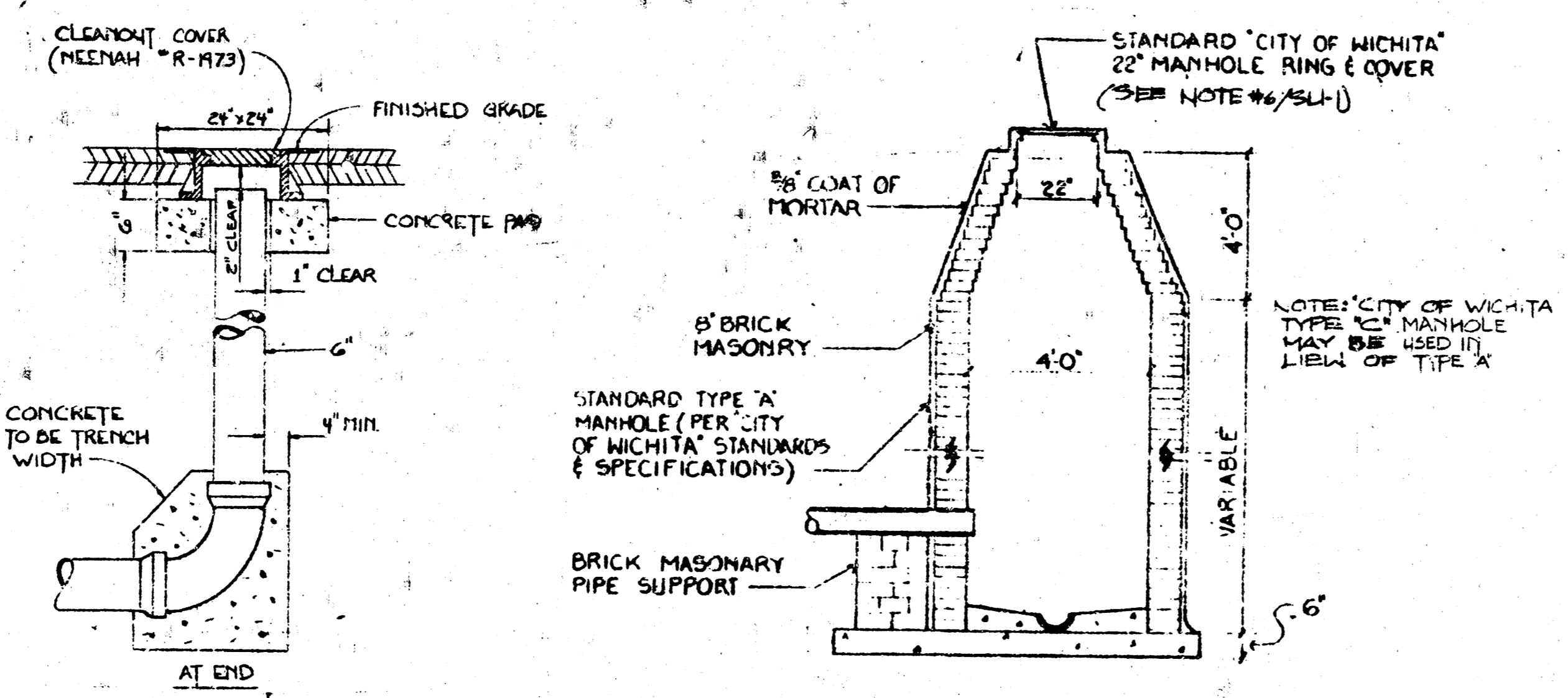
KEY PLAN

SITE

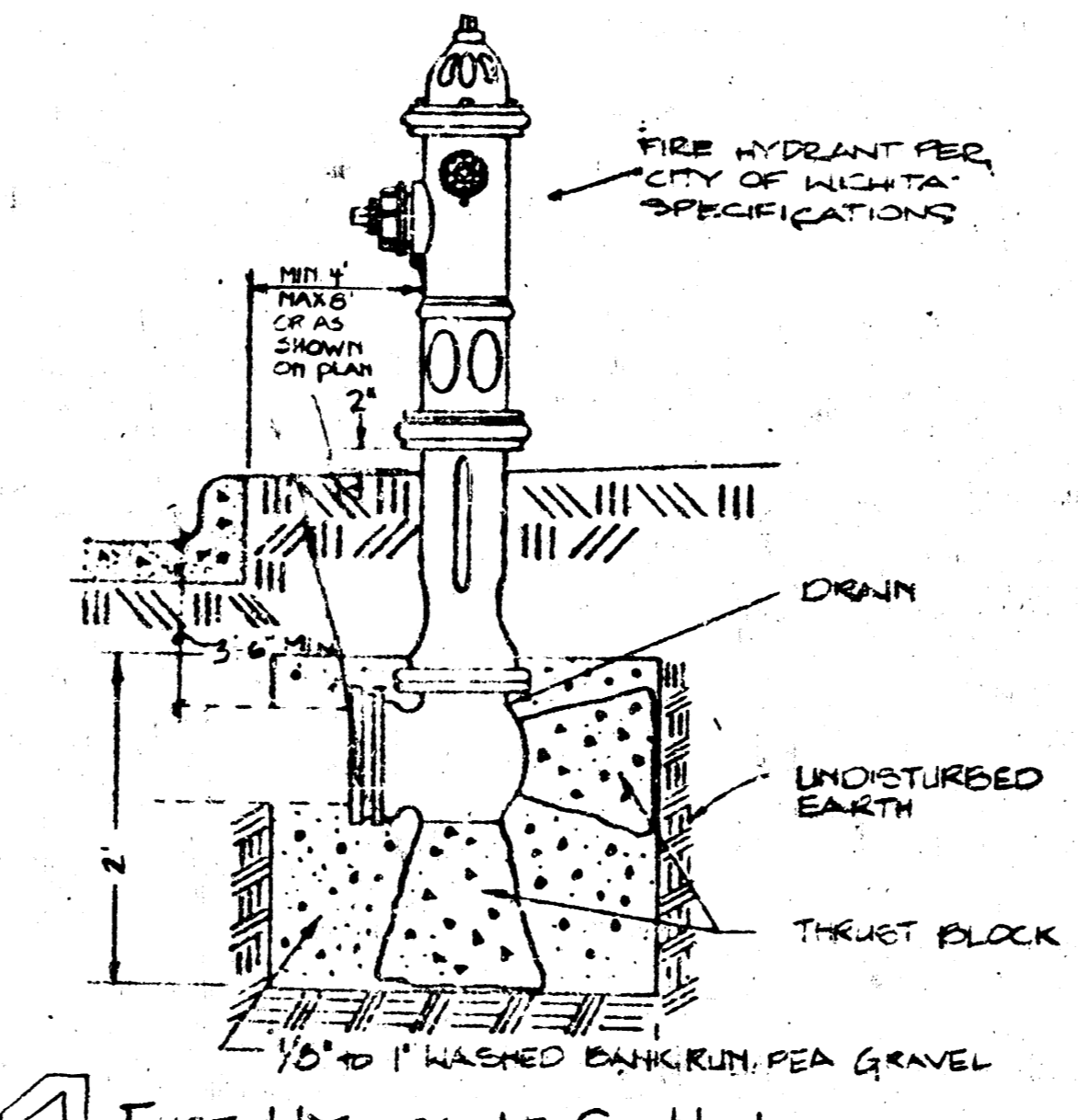
TENANT: SANITARY SEWER PROFILES
 UTILITIES DETAILS

SHEET TITLE: SANITARY SEWER PROFILES
 SHEET NUMBER: SU2

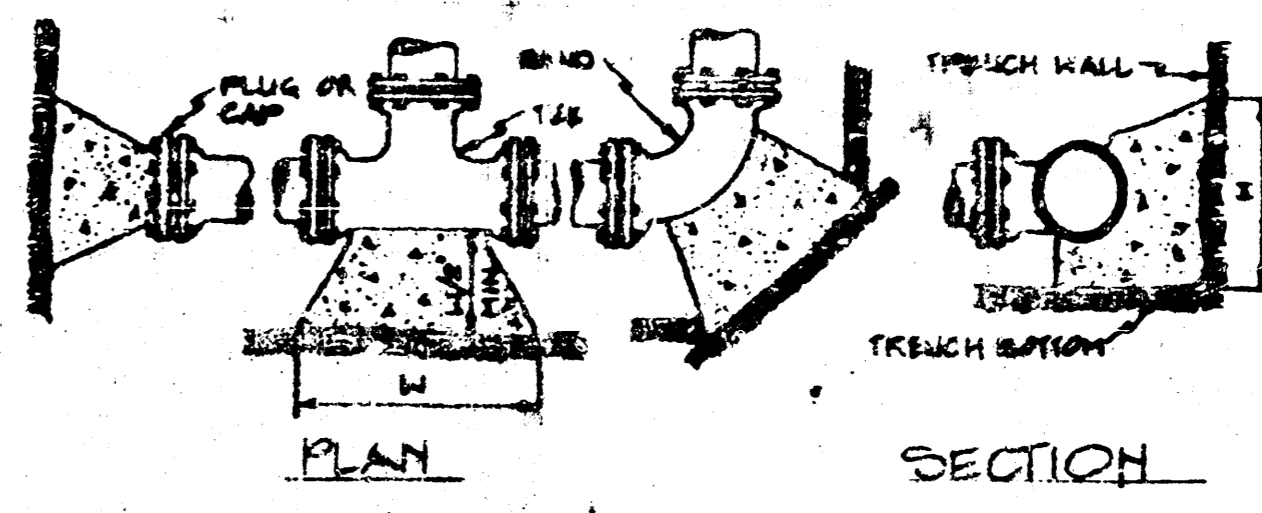
OF 2 SHEETS



6 STANDARD MANHOLE DETAIL



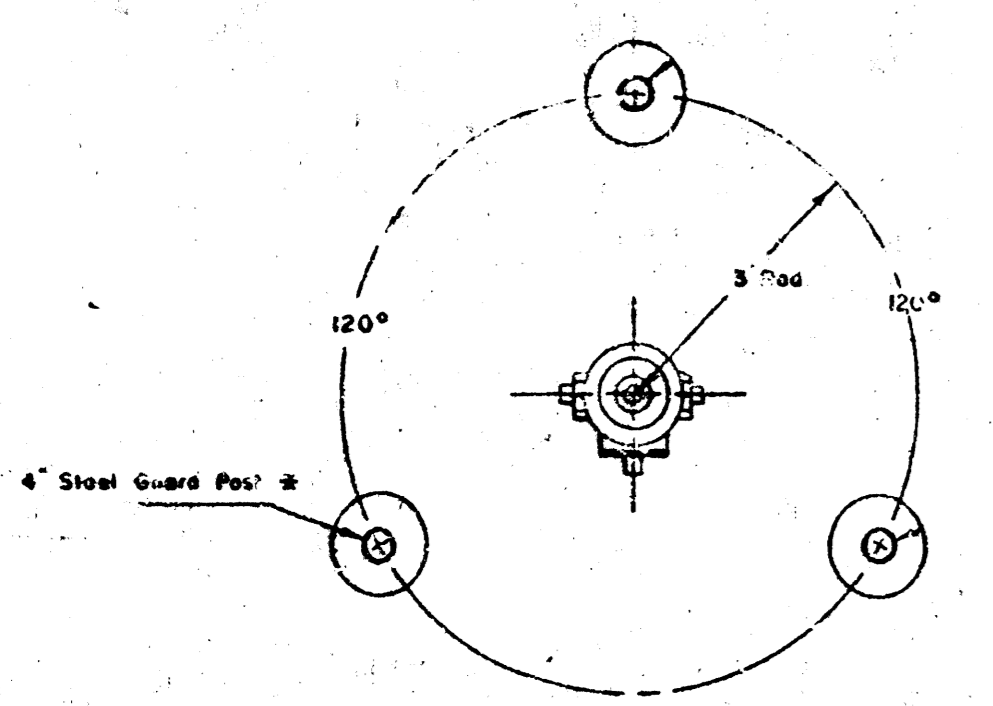
4 FIRE HYDRANT SETTING



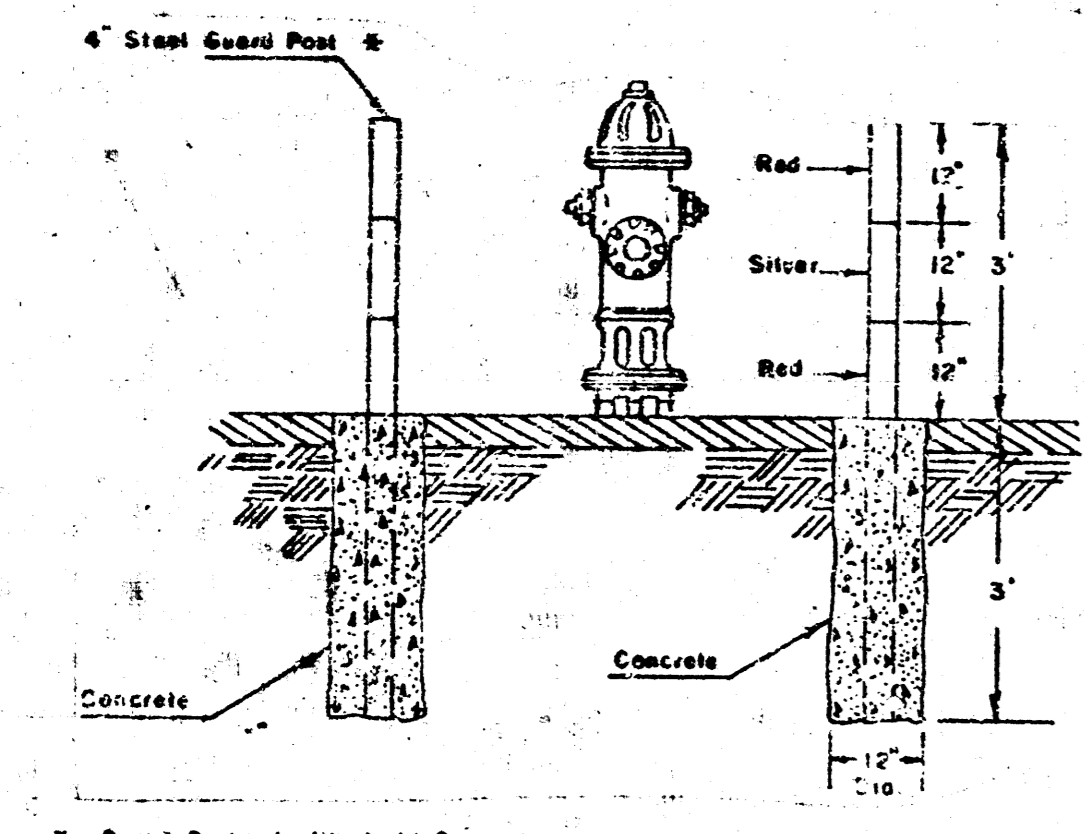
PIPE SIZE	PIPE	SPACING	ROAD	SPACING	SPACING
6"	1'-0"	2'-0"	1'-0"	1'-0"	1'-0"
8"	1'-0"	2'-0"	1'-0"	1'-0"	1'-0"
10"	1'-0"	2'-0"	1'-0"	1'-0"	1'-0"
12"	1'-0"	2'-0"	1'-0"	1'-0"	1'-0"
14"	1'-0"	2'-0"	1'-0"	1'-0"	1'-0"
16"	1'-0"	2'-0"	1'-0"	1'-0"	1'-0"
18"	1'-0"	2'-0"	1'-0"	1'-0"	1'-0"
20"	1'-0"	2'-0"	1'-0"	1'-0"	1'-0"
22"	1'-0"	2'-0"	1'-0"	1'-0"	1'-0"
24"	1'-0"	2'-0"	1'-0"	1'-0"	1'-0"
26"	1'-0"	2'-0"	1'-0"	1'-0"	1'-0"
28"	1'-0"	2'-0"	1'-0"	1'-0"	1'-0"
30"	1'-0"	2'-0"	1'-0"	1'-0"	1'-0"

BASED ON 150 PSI PRESSURE

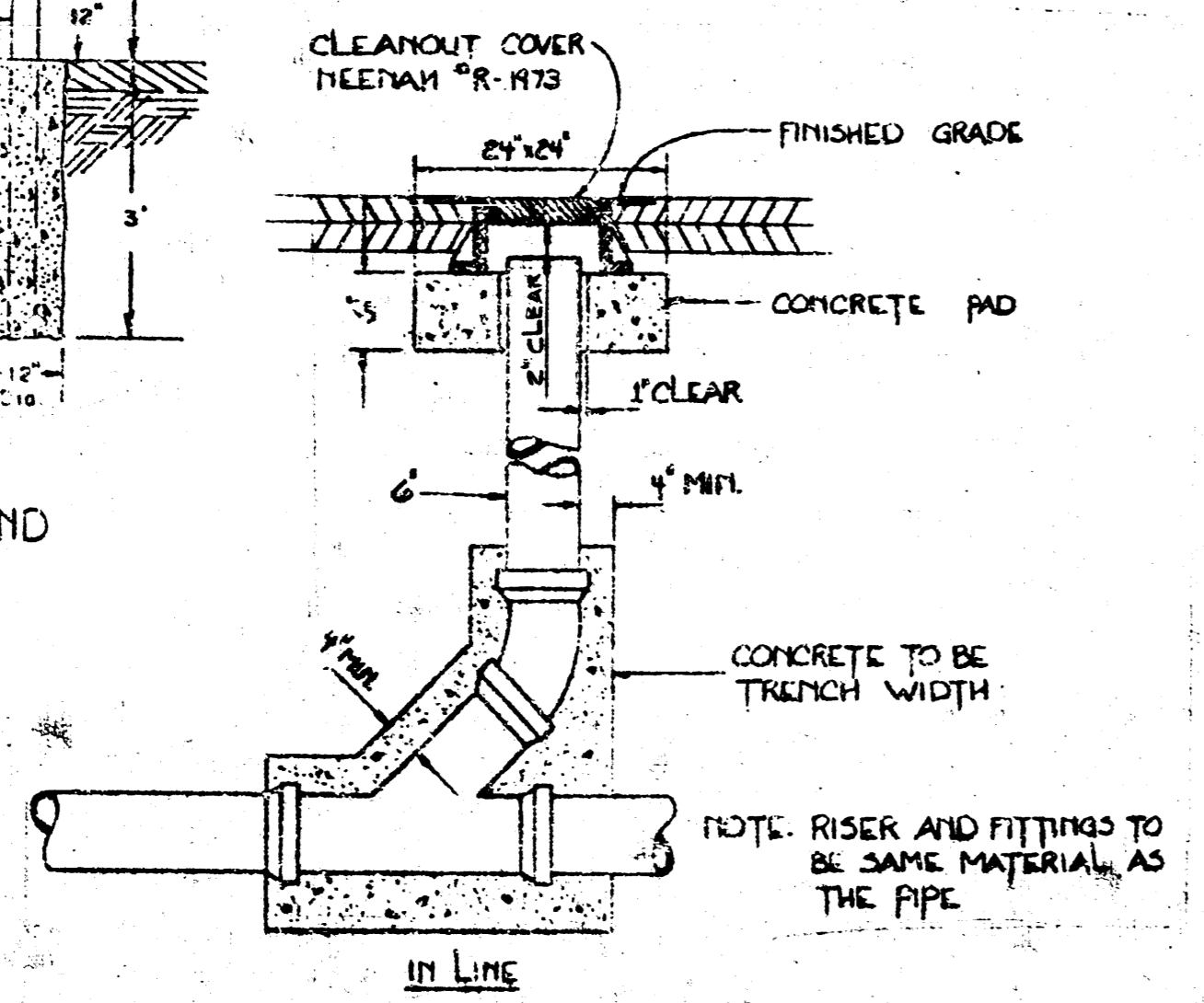
2 THRUST BLOCKS



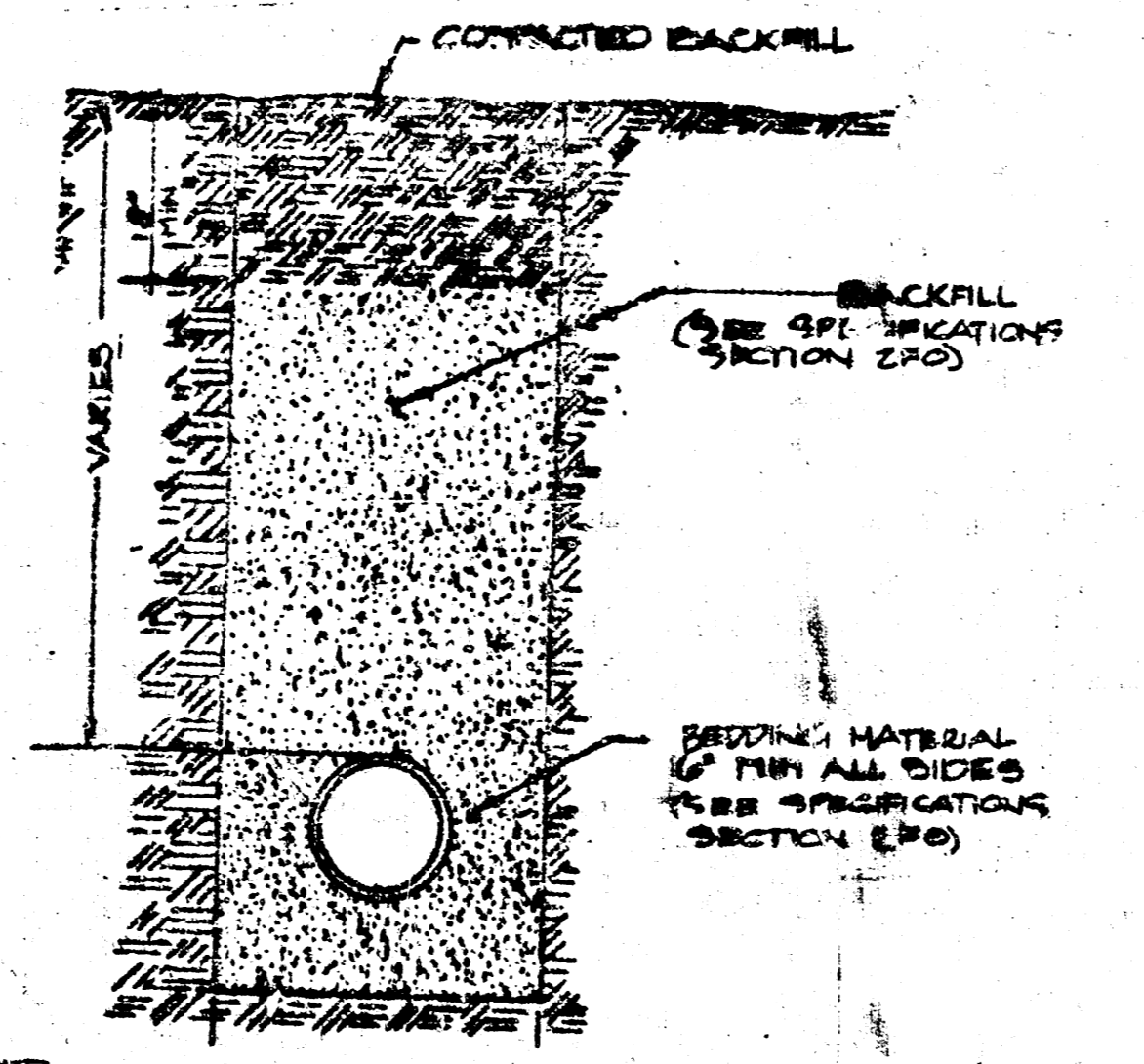
8 CLEAN OUT DETAIL



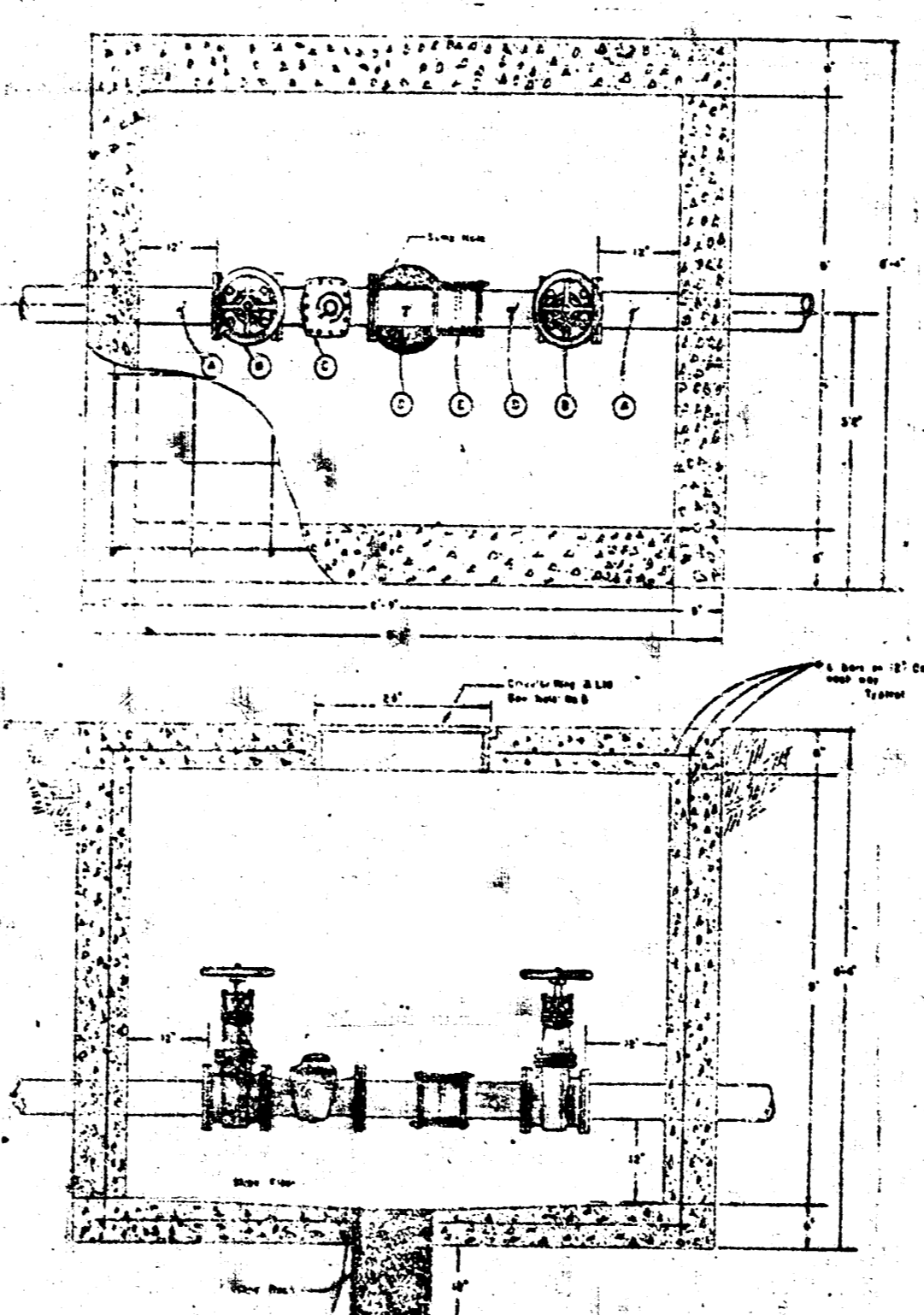
9 GUARD POST AROUND FIRE HYDRANTS



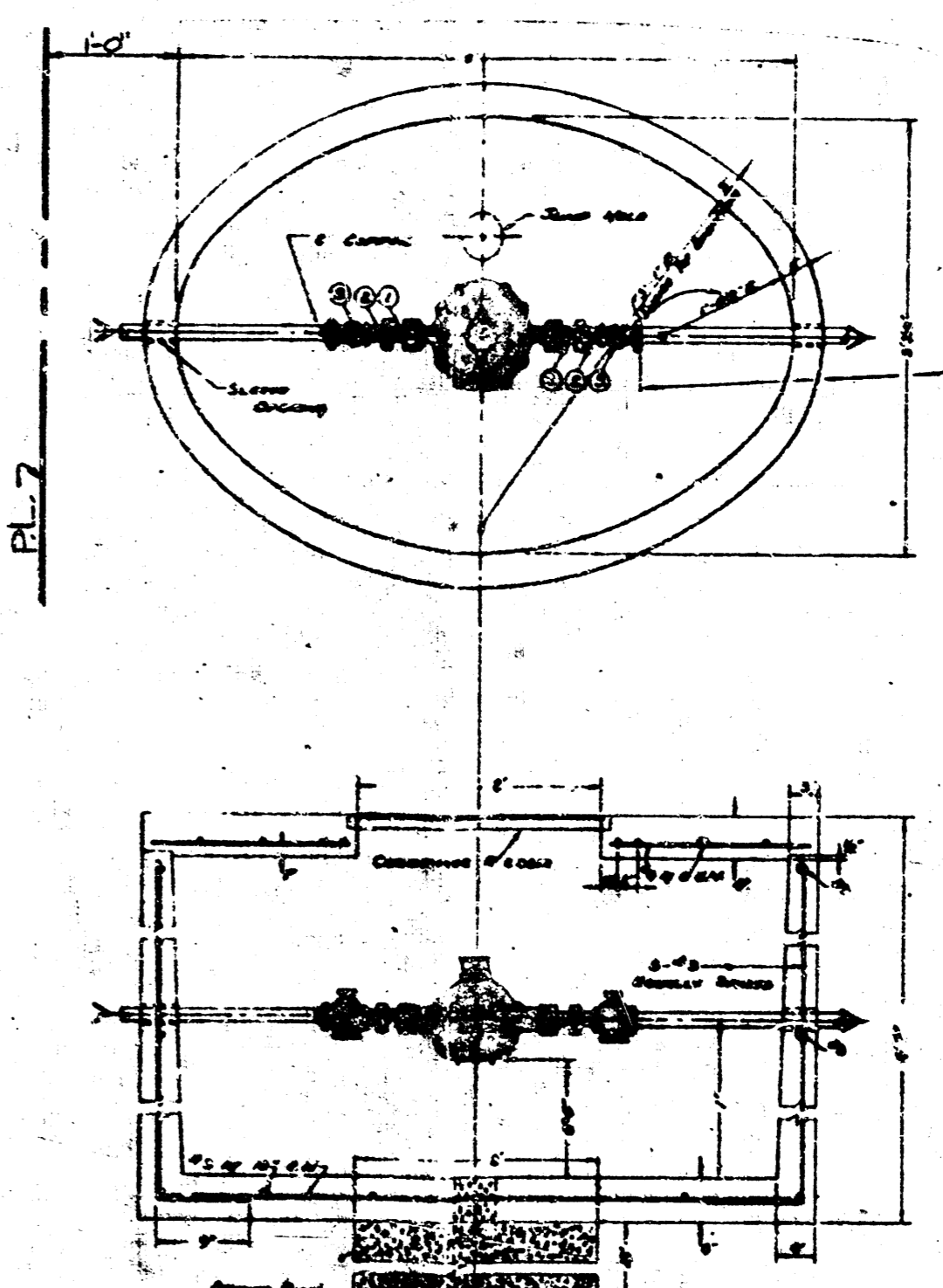
7 CLEAN OUT DETAIL



5 UTILITY TRENCH



3 4 METER VAULT



1 2 METER VAULT

CITY OF WICHITA PROJECT NUMBERS
 SANITARY SEWER: 158-70-215-20871-000-000-006
 WATER: 557-60-925-20703-000-000-004 PC#46