

**NOTE TO CONTRACTOR**

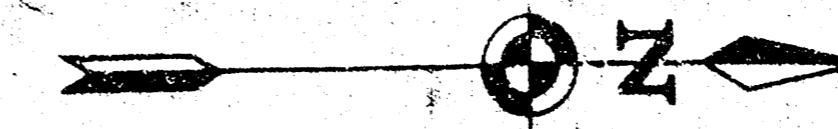
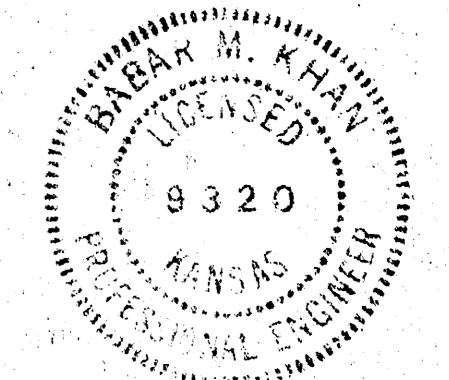
This project will be constructed under the supervision of the CITY ENGINEER and conforming to the SPECIFICATIONS of the CITY OF WICHITA. The CONTRACTOR will prepare the City of Wichita for all costs of inspection.

THE CONTRACTOR SHALL BE RESPONSIBLE FOR PRESERVING PROPERTY IRONS. THE CONTRACTOR SHALL BE REQUIRED TO RE-ESTABLISH ANY PROPERTY IRONS WHICH ARE DAMAGED OR DESTROYED BY HIS CONSTRUCTION OPERATIONS. SUCH IRONS SHALL BE RE-ESTABLISHED BY A LICENSED LAND SURVEYOR OR A LICENSED PROFESSIONAL ENGINEER IN ACCORDANCE WITH STATE LAWS.

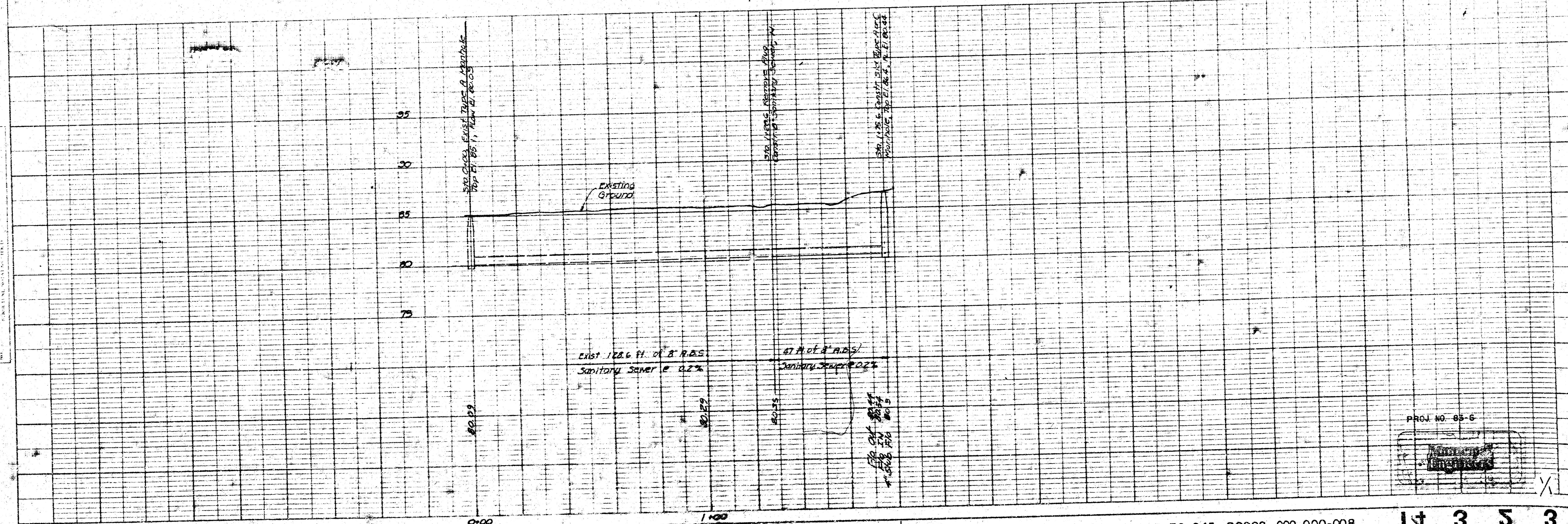
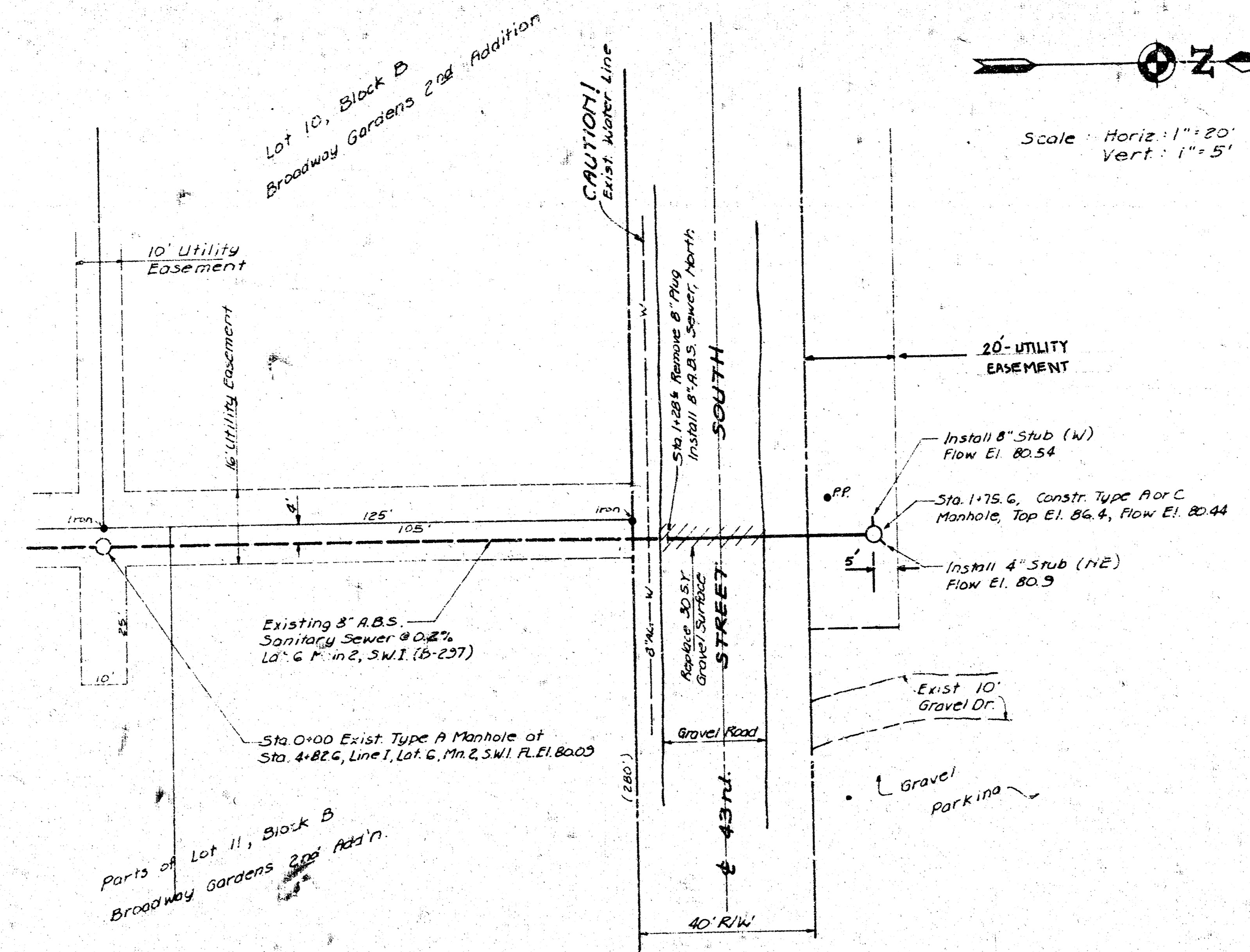
**Notes:**

- 1) B.M. 85.583 City B.M. Disc. 44 1/4" H and 40 1/4" E of Centerline of Broadway at 43rd St. South.
- 2) Survey per City of Wichita.
- 3) Contractor to Consult with all other Companies for Location and Depths of Existing Utilities Prior to Construction.
- 4) All Construction per City of Wichita, Kansas Specifications.

**APPROVED AS NOTED**  
By CITY ENGINEER OF WICHITA  
Sanitary Sewers 4-21-83  
Storm Sewers \_\_\_\_\_  
Driveway Approaches \_\_\_\_\_



Scale: Horiz: 1" = 20'  
Vert: 1" = 5'



PROJ. NO. 85-6