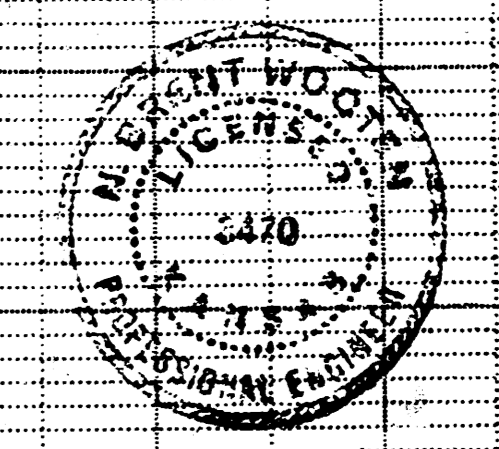
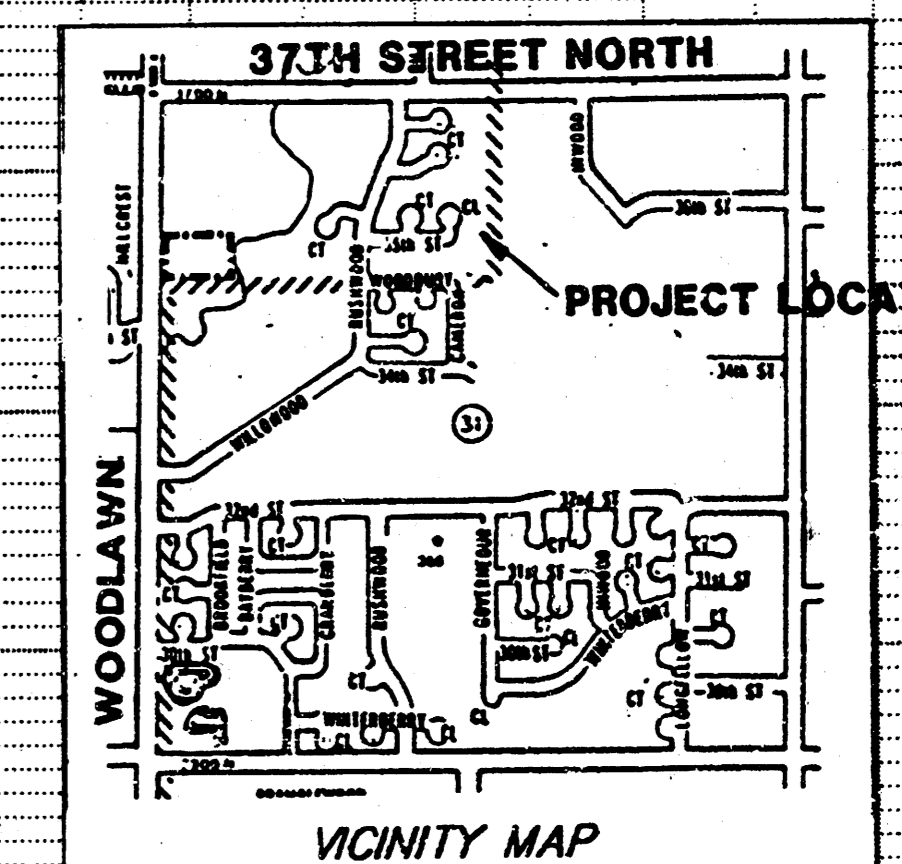
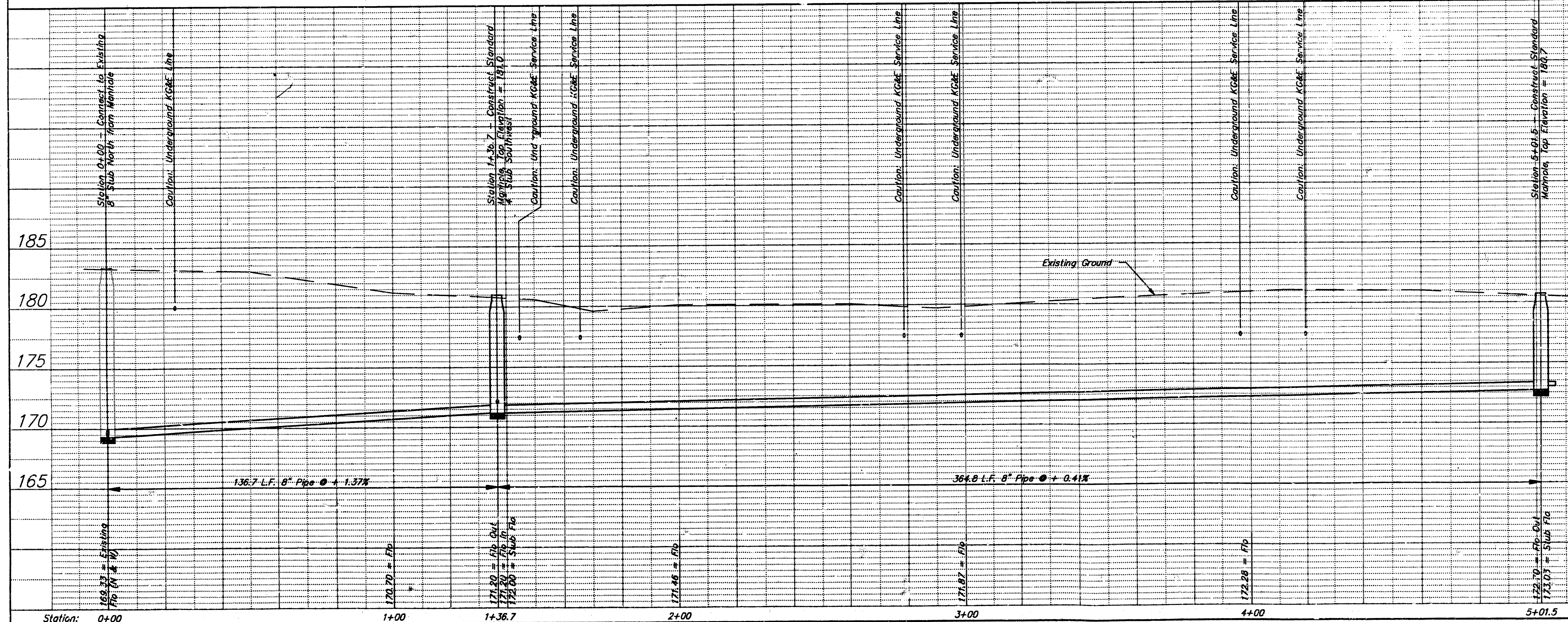
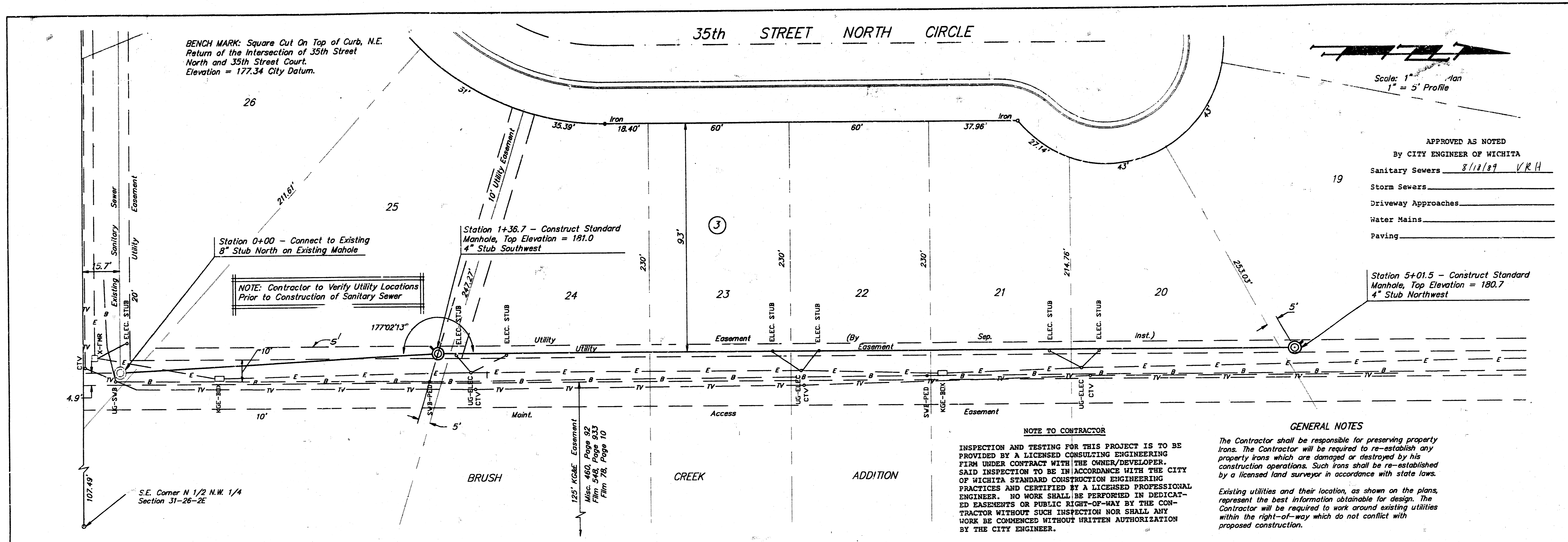


Revised as built 8-23-89
Review alignment 6-17-89

PRIVATE SANITARY SEWER TO SERVE LOTS 19 - 25, BLOCK 3, BRUSH CREEK ADDITION				
BAUGHMAN COMPANY P. A. SURVEYING & ENGINEERING 315/282-7271 • 315 ELLIS • WICHITA, KANSAS 67211				
PROJECT NUMBER 221 PPS				
DESIGN C. Bohm	DRAWN C. Bohm	APPROVED N.B.W.	DATE July 1989	SCALE Noted
SHEET 1				OF 1

FILMED FROM THE BEST AVAILABLE COPY

BOOKEN
RPL
2-90



Revised Alignment 6-17-89

PRIVATE SANITARY SEWER TO SERVE
LOTS 19 - 25, BLOCK 3, BRUSH CREEK ADDITION

BAUGHMAN COMPANY P. A. SURVEYING & ENGINEERING 316/262-7271 • 315 ELLIS • WICHITA, KANSAS 67211		REV.
PROJECT NUMBER 221 PPS		SHEET 1 OF 2
DESIGN C. Bohm	DRAWN C. Bohm	APPROVED M.B.W.
DATE July 1989		SCALE Noted

FILMED FROM THE BEST AVAILABLE COPY