

PRIVATE SANITARY SEWER EXTENSION
TO SERVE

LOT 1, BLOCK 1, BUCKLEY ADDITION,
Sedgwick County, Ks.

CITY OF WICHITA, KANSAS

M.E. LINDEBAK CITY ENGINEER

PROJECT NO. 468-76-245-80001-000-000-038

DATE: SEPTEMBER 1985

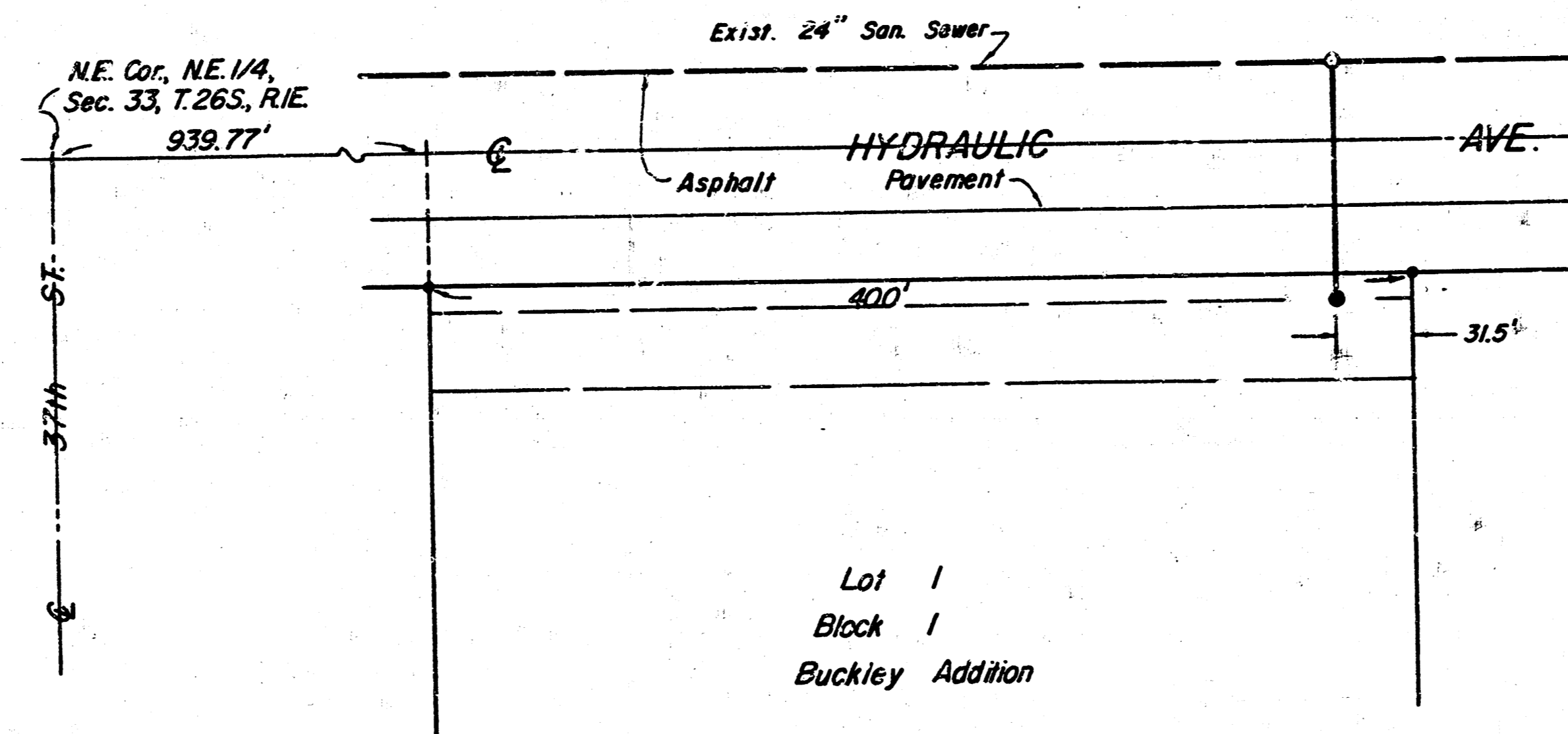
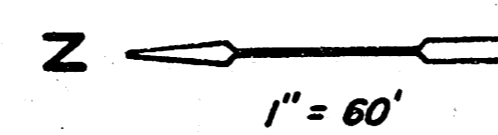
INDEX OF SHEETS

SHEET NO.	DESCRIPTION
1	TITLE SHEET
2	PLAN & PROFILE
3-5	STANDARDS

NOTIFY THE FOLLOWING COMPANIES PRIOR
TO ANY TRENCHING.

ARKLA GAS CO.	942-8350
BELL TELEPHONE	268-3087
CABLEVISION	266-6817
KPL GAS SERVICE	263-7511
KANSAS GAS & ELEC.	261-6248
KANSAS ONE-CALL	1-800-DIG-SAFE
CALL BEFORE YOU DIG	1-800-571-2115

THE CONTRACTOR SHALL BE RESPONSIBLE
FOR PRESERVING PROPERTY IRONS. THE
CONTRACTOR SHALL BE REQUIRED TO RE-
ESTABLISH ANY PROPERTY IRONS WHICH
ARE DAMAGED OR DESTROYED BY HIS CON-
STRUCTION OPERATIONS. SUCH IRONS
SHALL BE RE-ESTABLISHED BY A LIC-
ENSED LAND SURVEYOR OR A LICENSED
PROFESSIONAL ENGINEER IN ACCORD-
ANCE WITH STATE LAWS.



VICINITY MAP

Special Note -

Until Removal & Replacement of Pavement
is completed, the contractor shall maintain
at least 1 lane of traffic open in each
direction.

APPROVED AS NOTED
By CITY ENGINEER OF WICHITA
Sanitary Sewers *MLL 10/1/85*
Storm Sewers _____
Driveway Approaches _____
Water Mains _____
Paving _____

NOTE TO CONTRACTOR

This project will be constructed under the
supervision of the CITY ENGINEER and con-
forming to the SPECIFICATIONS of the CITY
OF WICHITA. The CONTRACTOR will pay the
City of Wichita for all costs of plan review,
inspection and booking per contract.



MOEHRING & ASSOCIATES
CONSULTING ENGINEERS
WICHITA

SANITARY SEWER EXTENSION
SERVING
Lot 1, Blk 1, Buckley Addition
To Sedgwick Co., Kansas

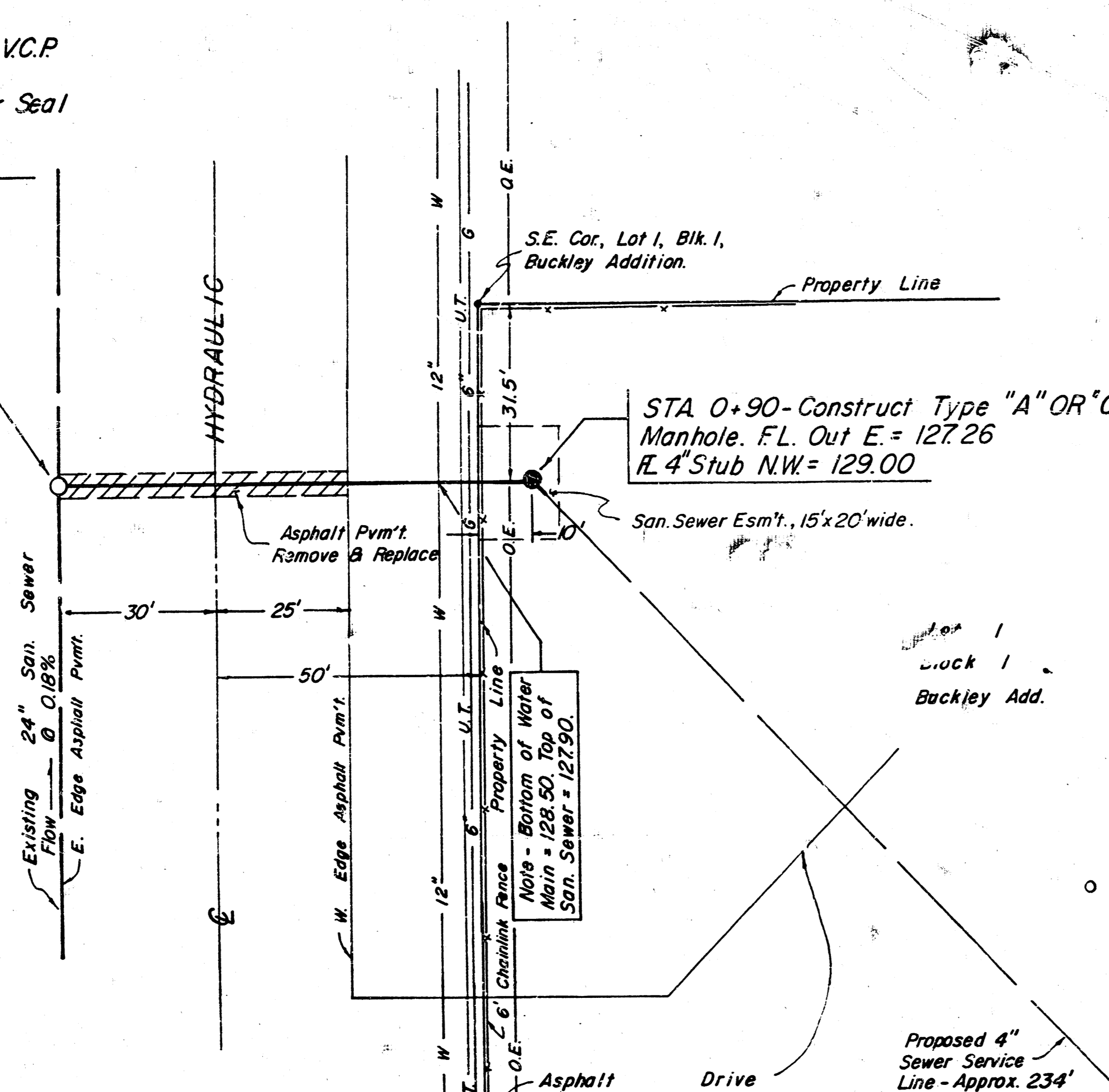
STA. 0+00 - Remove Exist. 8" V.C.P. Stub & Install 8" ABS. Pipe Complete with Manhole Water Seal
FL. Out - 125.66
FL. In - 126.99



1" = 20' Horiz.
1" = 5' Vert.

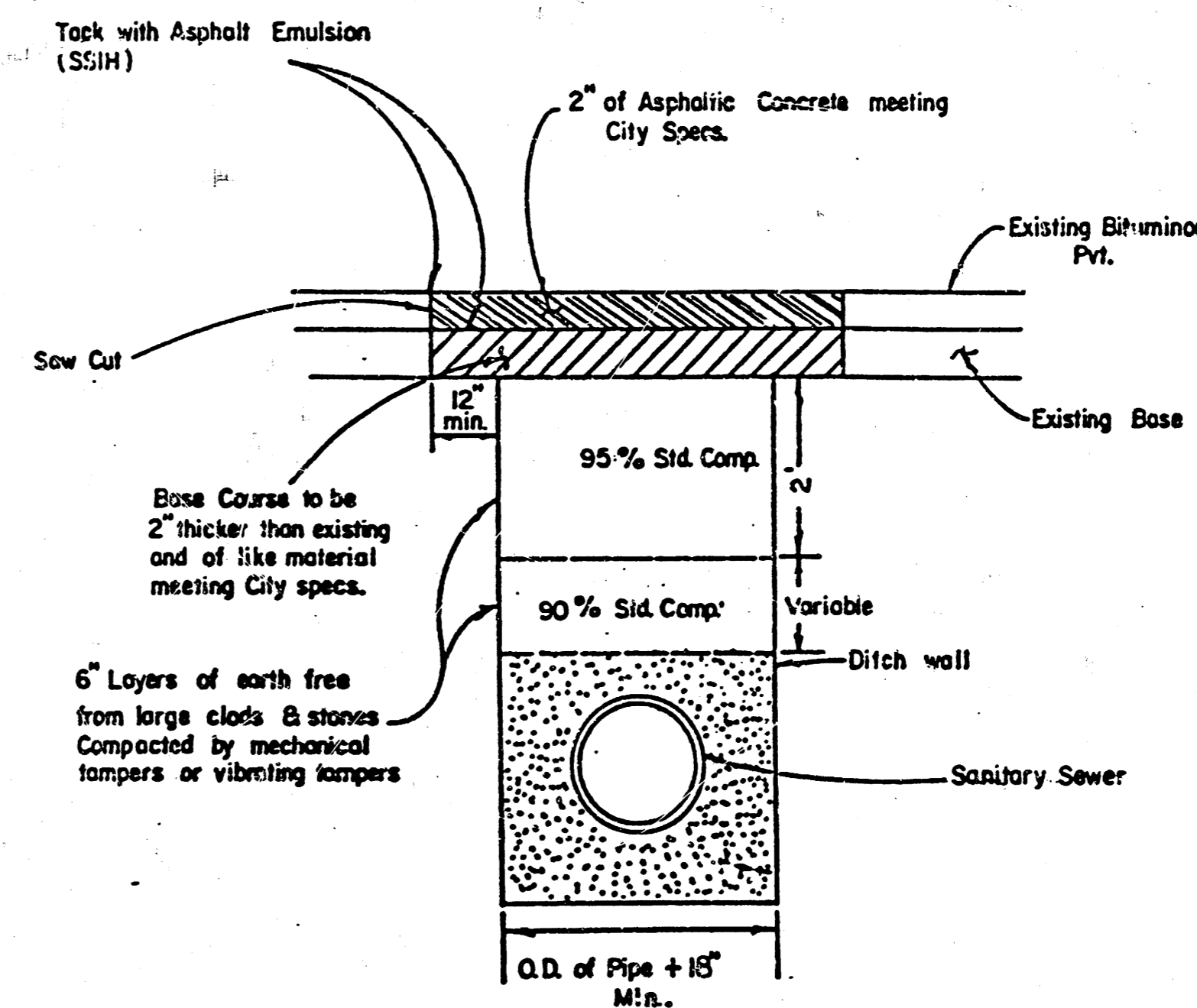
Legend -

- O.E. = Overhead Electric
- U.T. = Underground Telephone
- W = Water Main
- G = Gas Main



NOTE -
Confirm FL. Elevation of 4" Stub To Provide 2% Min Gradient To Point Of Connection With Existing Sewer Service Line.

BENCHMARK -
"D" in Daring on Fire Hydrant at N.E. Cor. Lot 1, Blk 1, Buckley Add. Elev. 137.56 City Datum.



Asphalt Removal & Replacement Detail

SPECIAL NOTE TO CONTRACTOR:
At each Street or Road Crossing, a minimum of one (1) Standard Density Test, as described in the latest addition of ASTM D 698, shall be performed to verify the above requirements to the Satisfaction of the Dept. of Engineering or the Dept. of Operations and Maintenance. All testing cost shall be included in the unit price bid for the pipe in place.

MOEHRING & ASSOCIATES
CONSULTING ENGINEERS
WICHITA
Sept. 25, 1985

PLAN
DRAWN BY: [Name]
CHECKED BY: [Name]
DATE: [Date]

PROFILE
DRAWN BY: [Name]
CHECKED BY: [Name]
DATE: [Date]

