

SANITARY SEWER TO SERVE

**LOT 1
R & L CARPENTER ADDITION &
UNPLATTED TRACT**

Private Project Number:

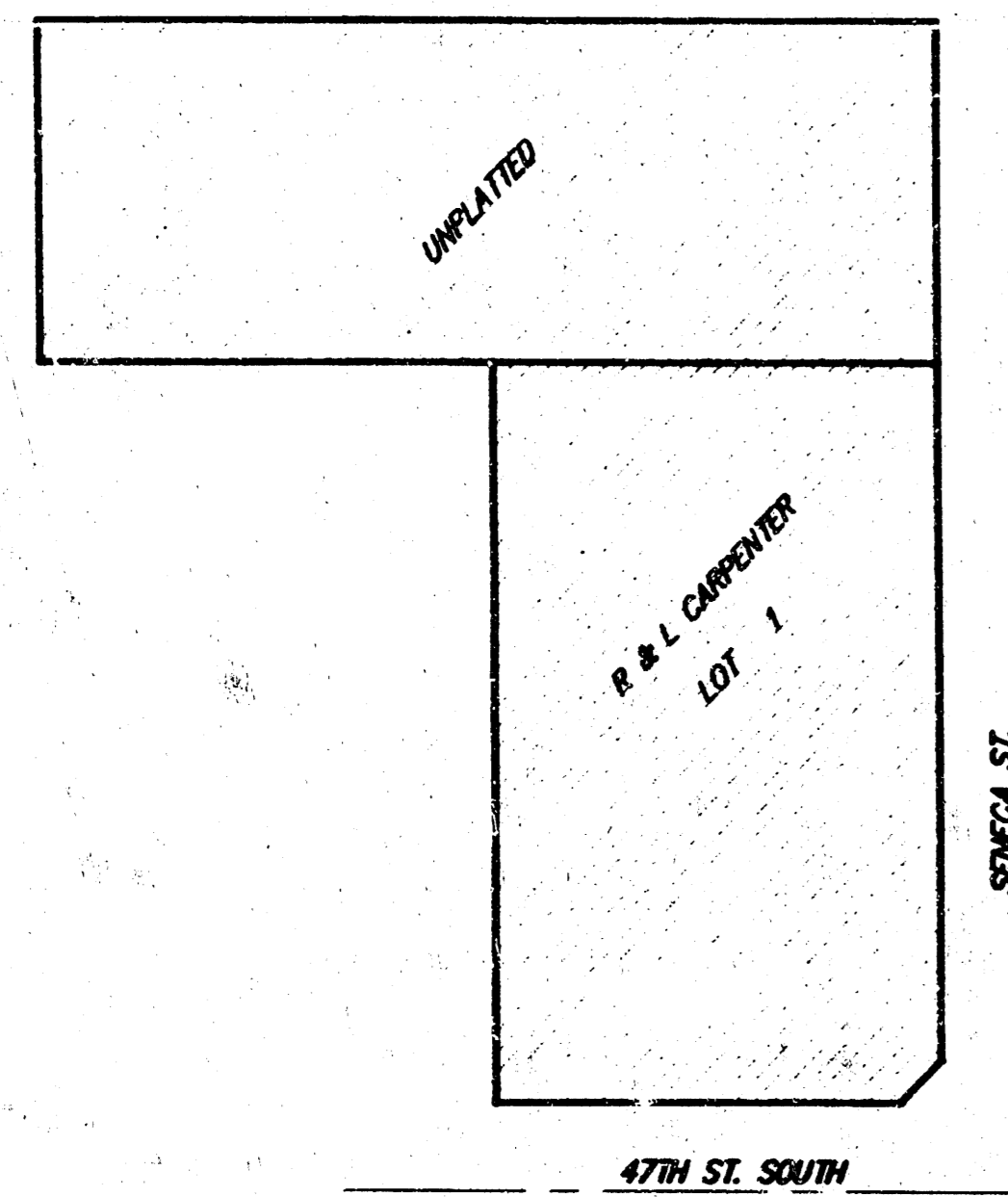
718PPS (607861)

CITY OF WICHITA, KANSAS

Michael E. Lindebak, P.E. City Engineer

APRIL, 1997

BENEFIT DISTRICT



General Notes

1. Contractor will be required to provide notice to utility companies a minimum of twenty-four (24) hours prior to any excavation, as follows:

Kansas One-Call 687-2470

The Contractor must notify the following in case of an emergency:

Cablevision 262-4270
or 263-2081
K.G.E. Gas Service Company 383-8600
Kansas Gas & Electric Company 383-8600
Peoples Natural Gas Company 942-7600
Southwestern Bell Telephone Company 1-571-2611
City of Wichita Water Department 268-4908
City of Wichita Sewer Maintenance 268-4071

2. Underground utility service lines and overhead utility pole lines are to be adjusted as necessary by others prior to construction, unless the plans specifically call for their adjustment by the Contractor. Existing utilities and their locations, as shown on the plans, represent the best information obtainable for design. Location information has been obtained from the various utility companies and is either from company record drawings or company-provided field locations. The Contractor will be required to work around existing utilities within the right-of-way which do not conflict with proposed construction.

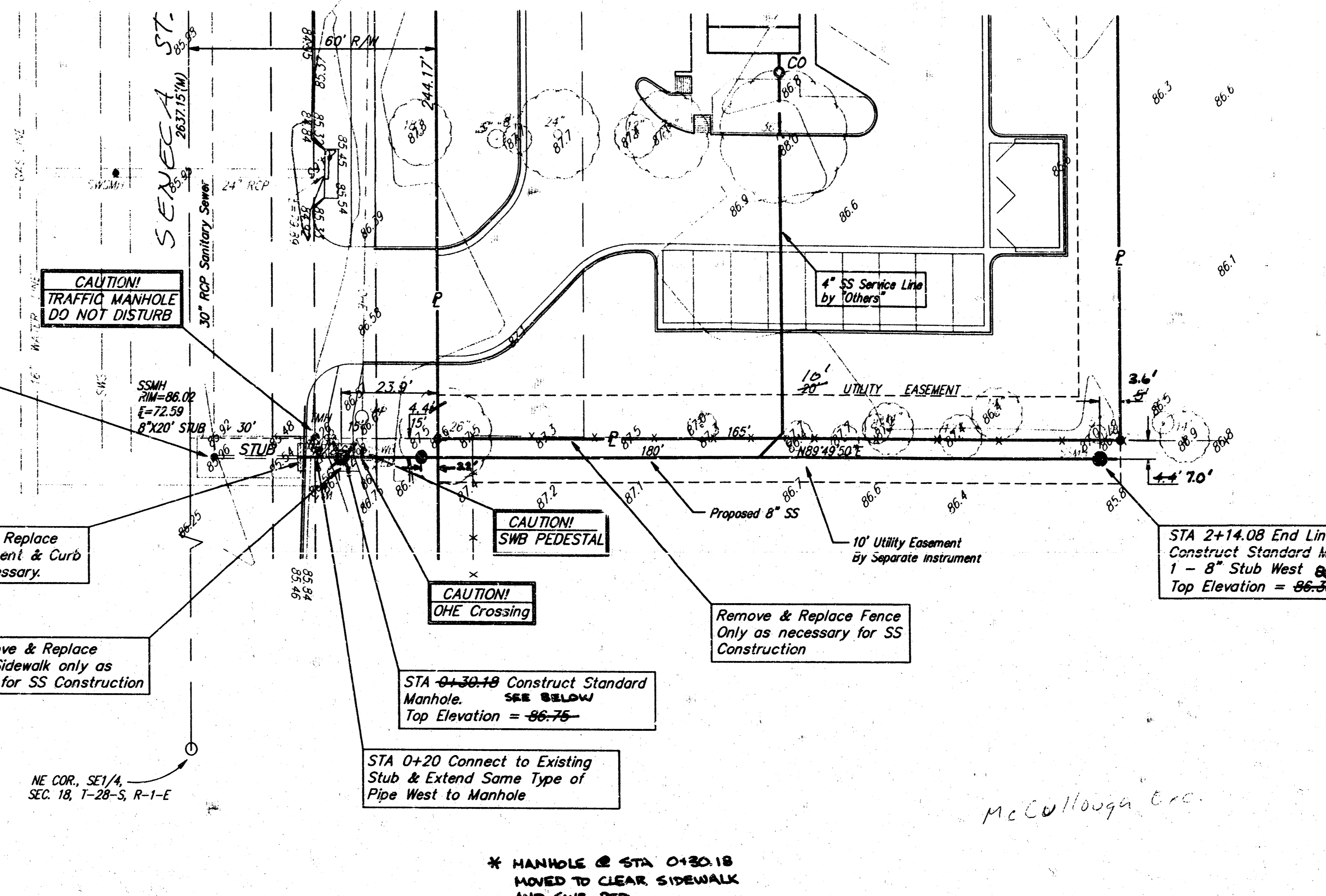
3. The Contractor shall be responsible for maintaining continuous flow of sewage through construction. Contractor's proposed method for maintaining sewage flow shall be approved by the Engineer. Cost of maintaining flow of sewage through construction will not be paid for directly and this cost shall be considered as subsidiary to the other pay items of work.

4. The Contractor shall be responsible for preserving property irons. The Contractor will be required to re-establish any property irons which are damaged or destroyed by his construction operations. Such irons shall be re-established by a licensed land surveyor in accordance with state laws.

5. All areas disturbed by construction operations shall be restored to pre-construction conditions including seeding, grading, and mulching if so required.

6. The Contractor shall erect and maintain traffic control devices in accordance with the Manual on Uniform Traffic Control Devices. Subject to Engineer's approval.

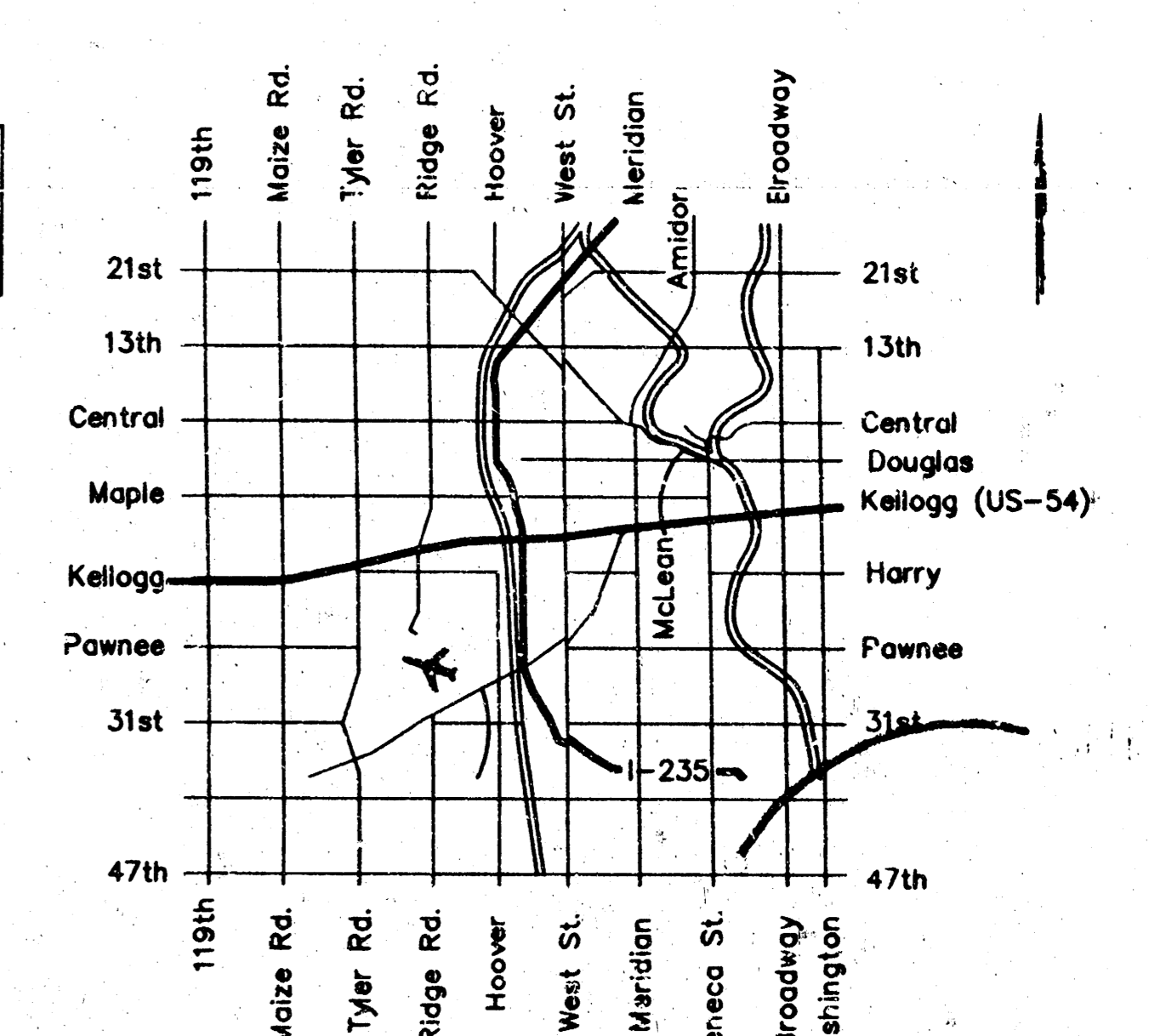
7. The Contractor shall contact Greg Sharpe with Southwestern Bell (268-2245) and work in conjunction with Southwestern Bell on the construction of the sanitary sewer line around the existing SWB pedestal.



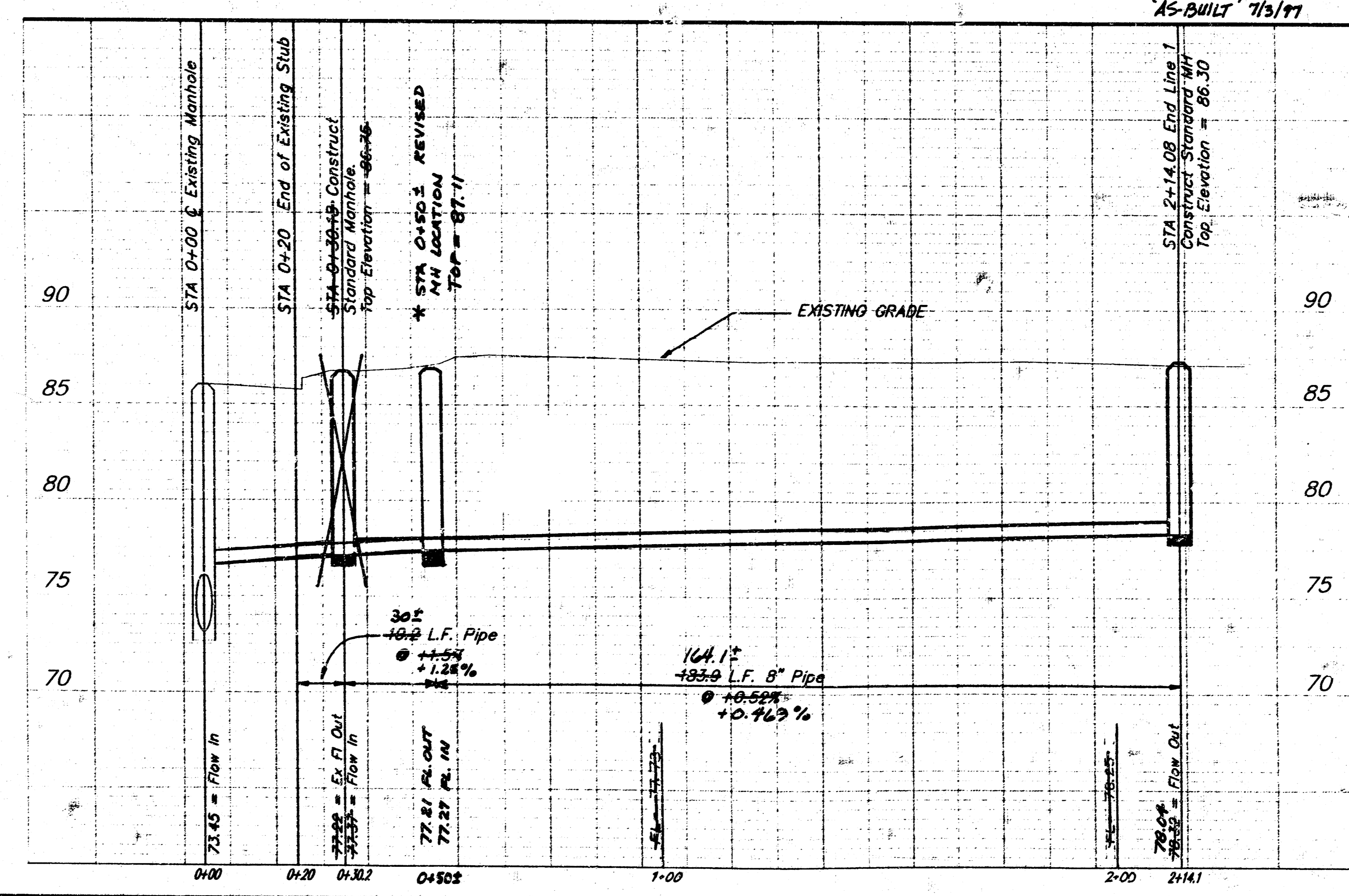
SCALE:
1" = 20' Horizontal
1" = 5' Vertical
= IRON

BENCHMARK

SENECA & 47TH ST. SQ. - CITY OF WICHITA BENCHMARK DISC
NE COR. OF INTERSECTION - 74' N. & 44' E. OF C. BOTH.
ELEV. = 87.431 CITY DATUM

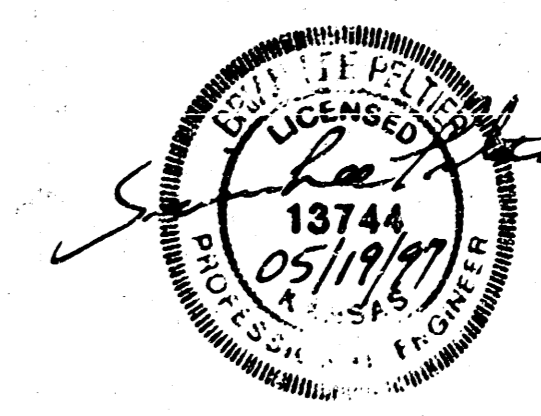


LOCATION MAP



APPROVED AS NOTED
BY CITY ENGINEER OF WICHITA
Sanitary Sewers VRH 5/22/97

NOTE TO CONTRACTORS
Inspection and testing for this project is to be provided by a Licensed Consulting Engineering Firm under contract with the Owner/Developer. Said inspection to be in accordance with the City of Wichita standard construction engineering practices and certified by a Licensed Professional Engineer. No work shall be performed in dedicated easements or public right-of-way by the Contractor without such inspection nor shall any work be commenced without written authorization by the City Engineer. All Construction and Materials shall comply with the City of Wichita Specifications and Standards (on file and available in the City Engineer's Office).



Booked
N-266
RDL
7/9/97

AS-BUILT 7/9/97 - BY BAUGHMAN CO.
BAUGHMAN COMPANY F.A.
ENGINEERING, SURVEYING, & PLANNING
516-262-7271 • 315 ELLIS • WICHITA, KANSAS 67211