

# SANITARY SEWER TO SERVE R & L Carpenter 3rd Addition

Lot 1  
Private Project Number: 1354 PPS (607861)

CITY OF WICHITA, KANSAS  
Neil Cable, P.E. City Engineer  
July 2003

### Bench Marks

B.M. #1- Top of "Kaw Valley" Rebar, Northwest corner of Lot 1 R & L Carpenter 3rd Addition

Elevation = 183.63 (City Datum)

B.M. #2- City of Wichita Bench Mark, Southeast corner of Woodlawn and 37th Street North, 75.70 feet East of centerline

Elevation = 183.04 (City Datum)

B.M. #3- "X" chiseled on face of sidewalk approximately 37.9 feet east & 5.1 feet south of SW corner of Lot 1, R & L Carpenter 3rd Addition.

Elevation = 184.27 (City Datum)

### Index

Cover/Plan/Profile Sheet	1
Manhole Detail	2
Ring & Cover Detail	3
BMP Erosion Detail	4
Copy Of Plot	5

### Legal Description

Lot 1 Except South 30', R & L Carpenter 3rd Addition, Wichita, Sedgwick County, Kansas

APPROVED AS NOTED  
BY CITY ENGINEER OF WICHITA

Sanitary Sewer DRH 7/5/03

### NOTE TO CONTRACTORS

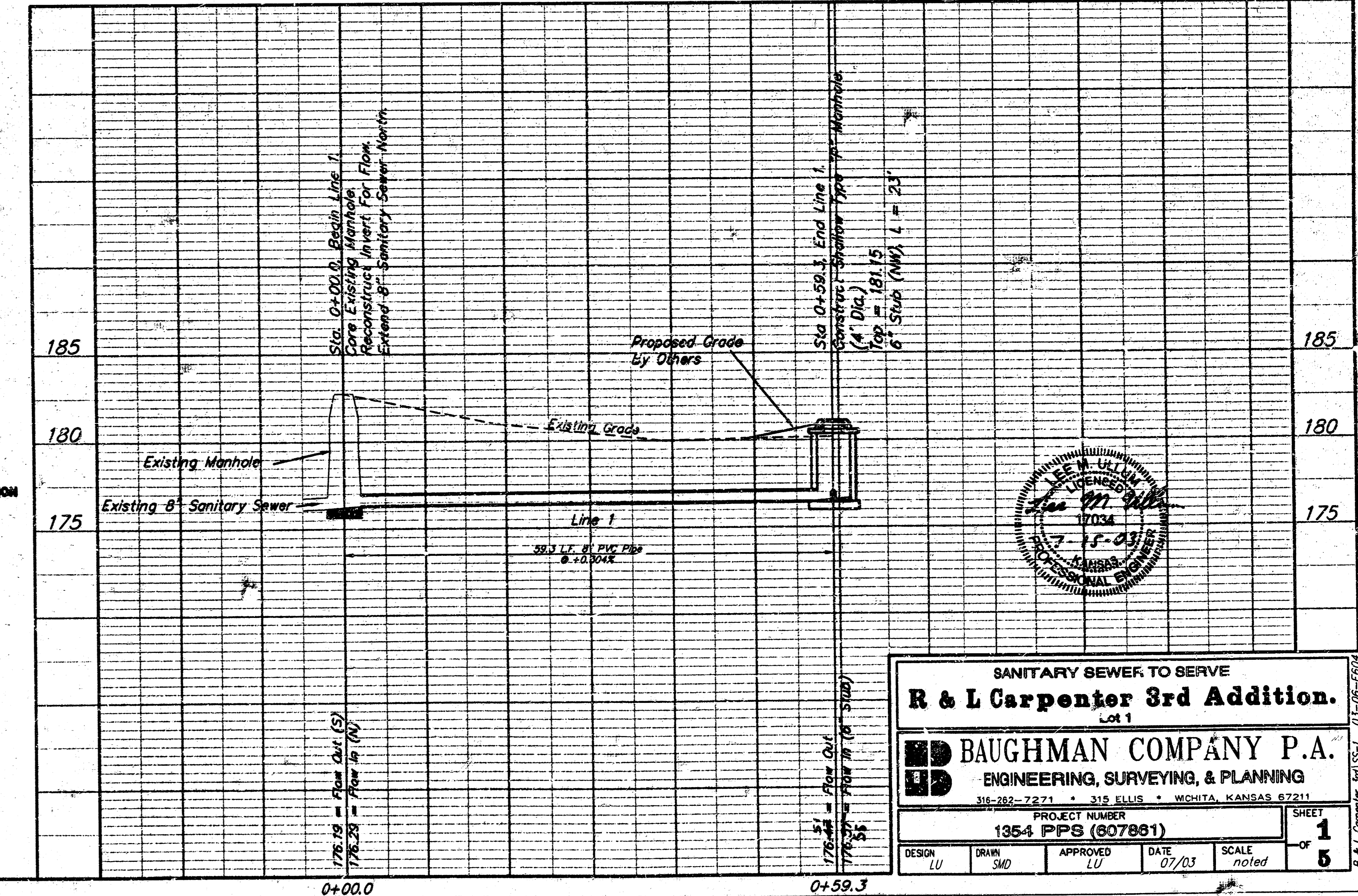
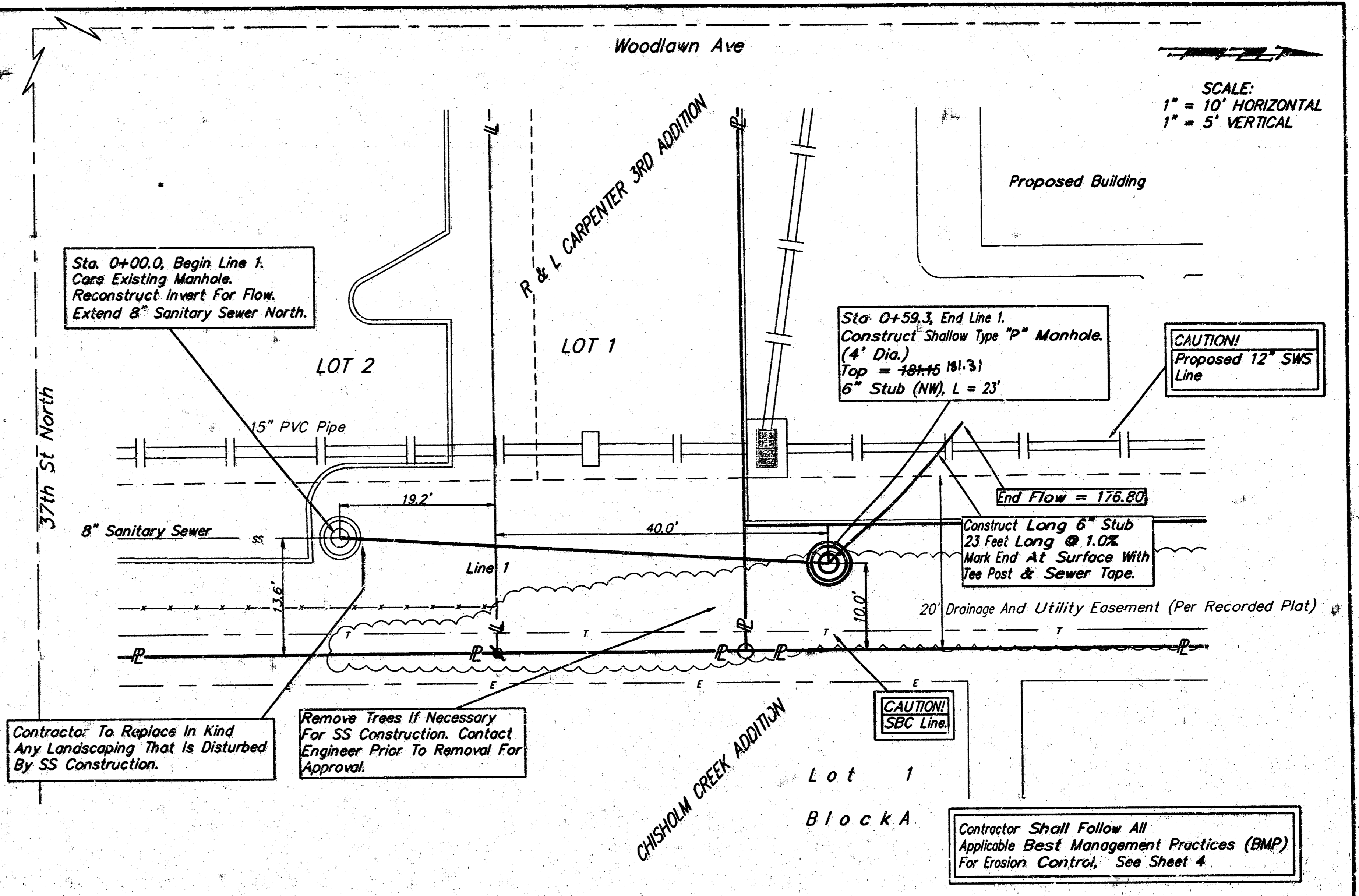
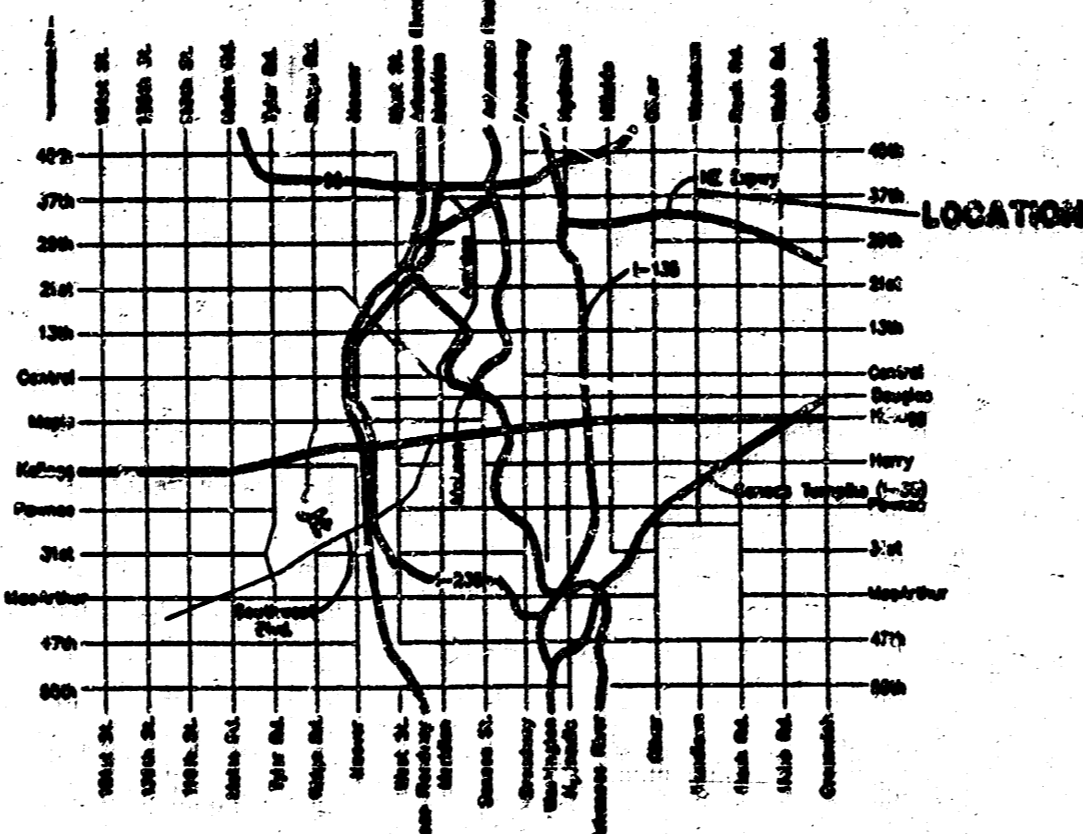
Installation, inspection and testing for this project is to be provided by a Licensed Consulting Engineering Firm under contract with the Owner/Developer. Inspection to be in accordance with the City of Wichita standard construction engineering practices and certified by a Licensed Professional Engineer. No work shall be performed in difficult situations or public right-of-way by the Contractor without such inspection nor shall any work be commenced without written authorization by the City Engineer. All Construction and Materials shall comply with the City of Wichita Specifications and Standards (on file and available in the City Engineer's Office).

### General Notes

- Contractor will be required to provide notice to utility companies a minimum of forty-eight (48) hours prior to any excavation, as follows:  
Kansas One-Call 687-2470  
The Contractor must notify the following in case of an emergency:  
Cox Communications 262-4270  
Kansas Gas Service Company 1-822-432-4950  
Westar Energy (Electric) 383-8650  
Aquila Energy (Gas) 1-800-303-0357  
SBC 1-800-296-4113  
City of Wichita Water Dept. (Water) 262-4908  
City of Wichita Sewer Maint. (SS) 268-4034  
City of Wichita Storm Sewer Maint. 268-4090  
City of Wichita Traffic Maint. 268-4034
- Utility service lines, poles, valve boxes, meters, et cetera are to be adjusted as necessary by others prior to construction unless the plans specifically call for their adjustment by the Contractor or unless the plans specifically identify a utility to be adjusted by its owner during construction. Existing utilities and their location, as shown on the plans represent the best information obtainable for design and shall be field verified. The contractor will be required to work around existing utilities within the right-of-way which do not conflict with proposed construction.
- Contractor shall not start work on the project until the project inspector is assigned to the project and is present on the site. Contractor shall not start on the project until all necessary bonds and permits have been obtained. Any work done without inspection will be required to be uncovered for inspection.
- The Contractor shall be responsible for maintaining continuous flow of sewage through construction. Contractor's proposed method for maintaining sewage flow shall be approved by the Engineer. Cost of maintaining flow of sewage through construction will not be paid for directly and this cost shall be considered as subsidiary to the other pay items of work.
- The Contractor shall give all property owners/tenants of developed property directly abutting the construction of this project a minimum of ten (10) days notice prior to start of construction.
- Rubble from the removal of miscellaneous structures and excess excavation which is to be wasted shall be disposed of on sites to be provided by the Contractor. These sites shall be approved by the Engineer as to suitability, appearance and site location. Locations that, in the opinion of the Engineer, will leave an unsightly appearance will not be approved. All disposal sites must be approved by the Kansas Department of Health and Environment. Material, either stockpiled or disposed of in a flood plain would require a Kansas State Board of Agriculture permit. Any material dumped in waters of the United States or wetlands is subject to U.S. Corps. of Engineers permitting regulations. Any material buried or stockpiled beyond approved construction limits would require additional archeological investigations unless buried in a previously approved borrow location.
- All sanitary sewers shall be installed in accordance with the most recent edition of City of Wichita, Kansas Standard Specifications for the Construction of City Projects.
- All disturbed R/W areas not intended for pavement or sidewalk construction shall be seeded with Kansas Premium Fescue Blend at a rate of 8 lb./1000 Sq. Ft., fertilized with a 16-20-6 ratio at a rate of 4 lb./1000 Sq. Ft., and mulched with Prairie Hay at a rate of 92 lb./1000 Sq. Ft. Mulch shall be "patted" with forks or punched into soil to reduce loss due to wind.
- Properties within the project limits may have underground sprinkler systems which conflict with new construction. Contractor will be required to remove such improvements should they not be removed by their owner at the time of construction. The Contractor will be required to salvage all sprinkler heads and/or valves and give such material to their owner. Portions of underground sprinkler systems not in conflict with new construction shall be protected from damage and shall remain in place. All work in connection with underground sprinkler systems shall be considered as subsidiary to the contract pay items of work.

AS-BUILT  
Date 7/5/03  
Signed [Signature]

### Location Map



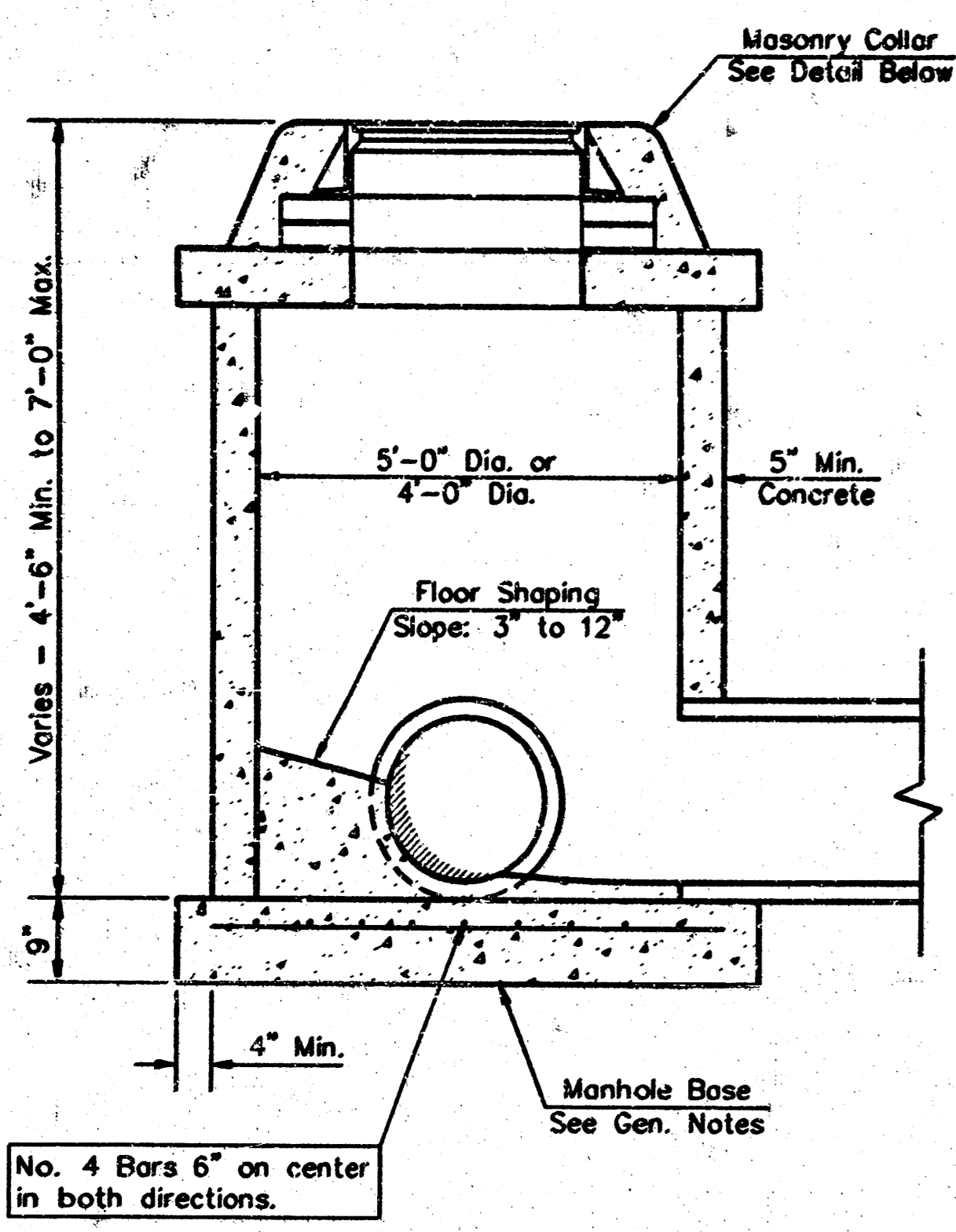
SANITARY SEWER TO SERVE  
**R & L Carpenter 3rd Addition.**  
Lot 1

**BAUGHMAN COMPANY P.A.**  
ENGINEERING, SURVEYING, & PLANNING  
316-282-7271 • 312 ELLIS • WICHITA, KANSAS 67211

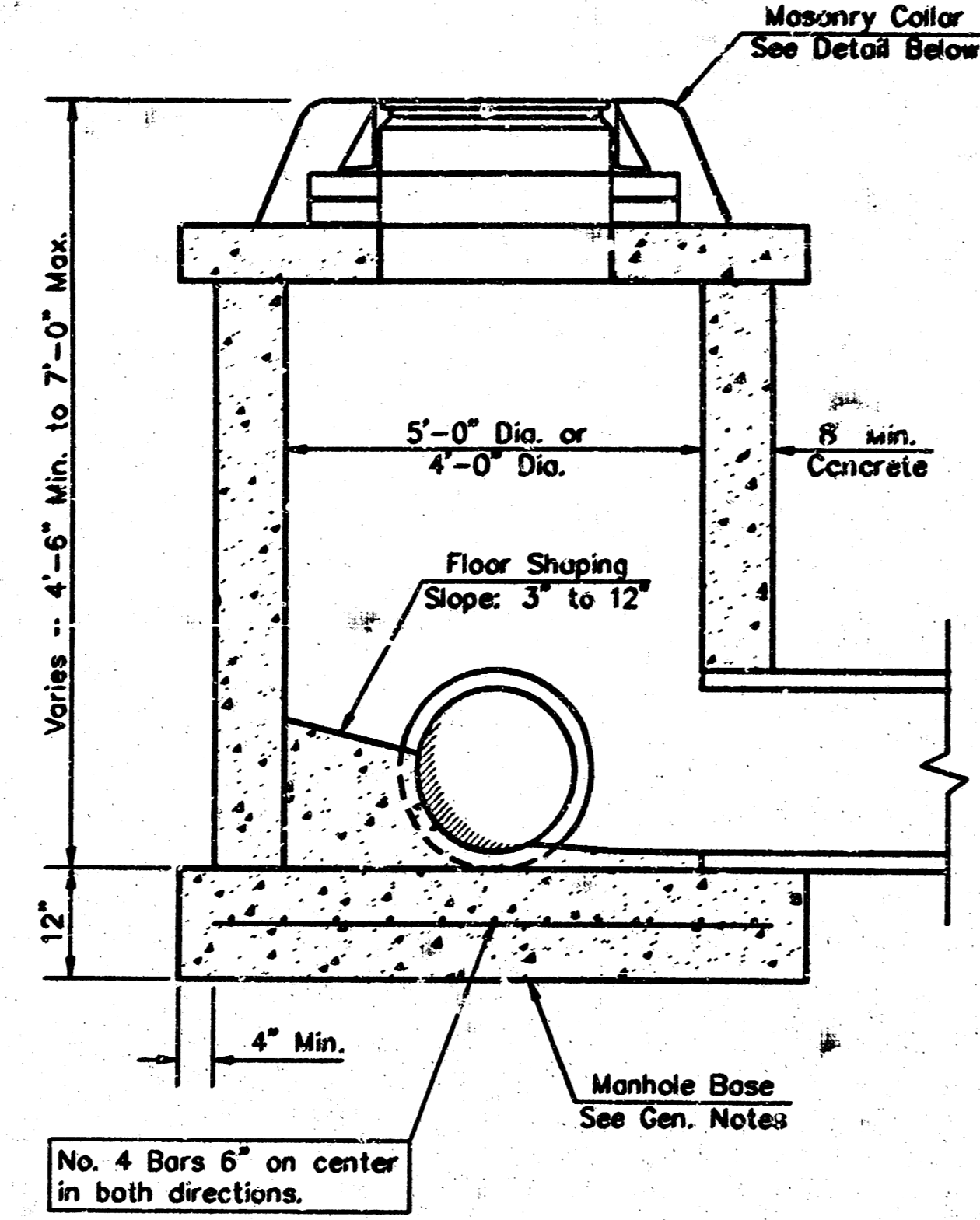
PROJECT NUMBER: 1354 PPS (607861) SHEET: 1 OF 5

DESIGN: LU DRAWN: SMD APPROVED: LU DATE: 07/03 SCALE: Noted

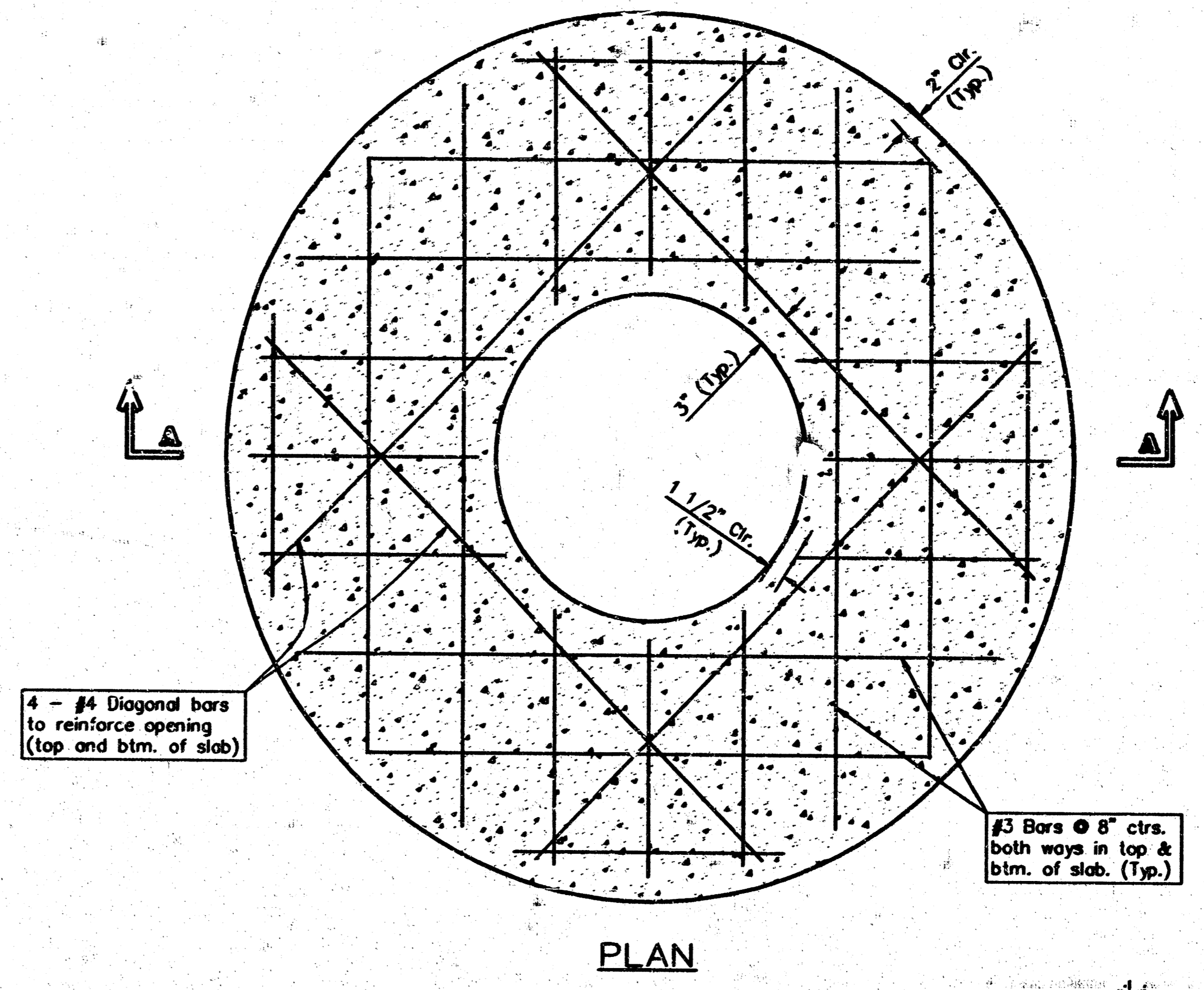
18 10 02 07



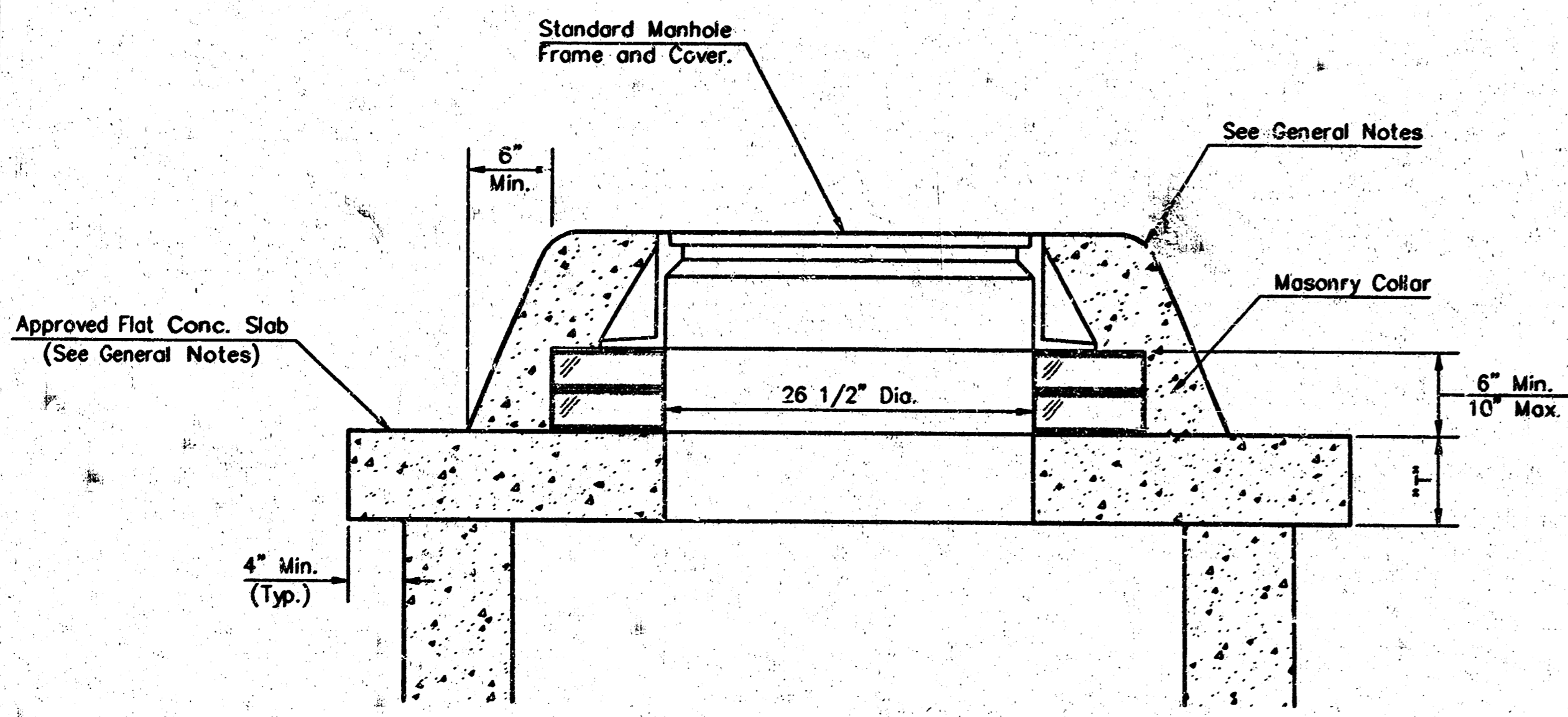
**SHALLOW TYPE "P" MANHOLE**



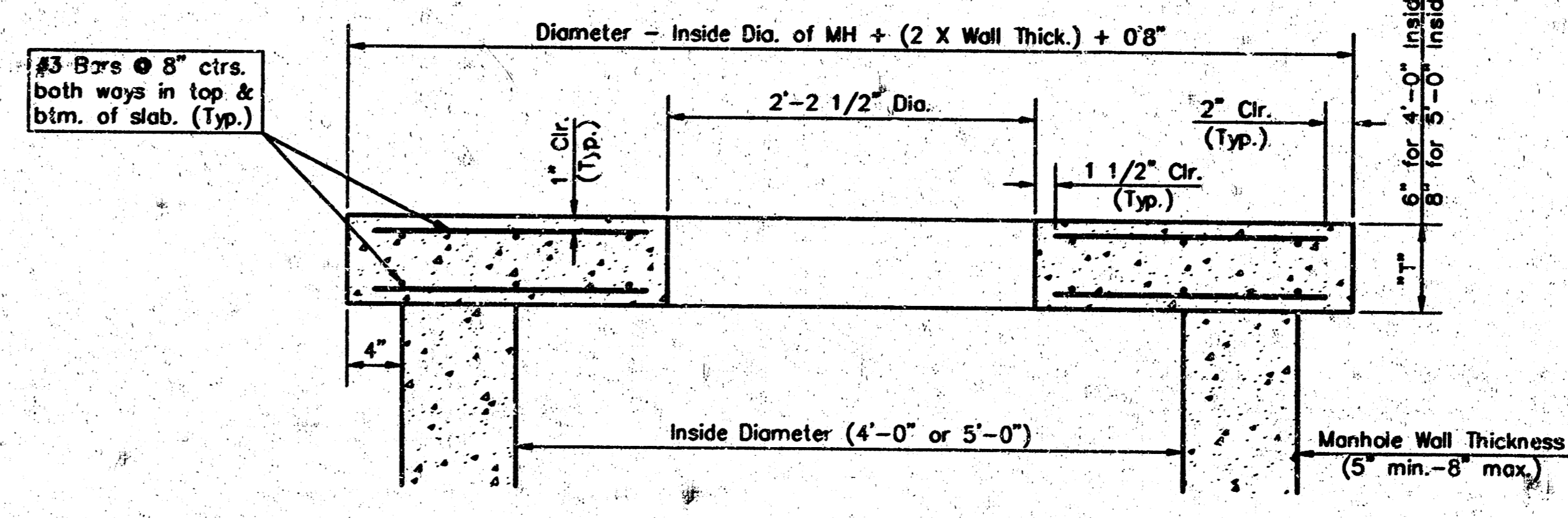
**SHALLOW TYPE "C" MANHOLE**



**PLAN**

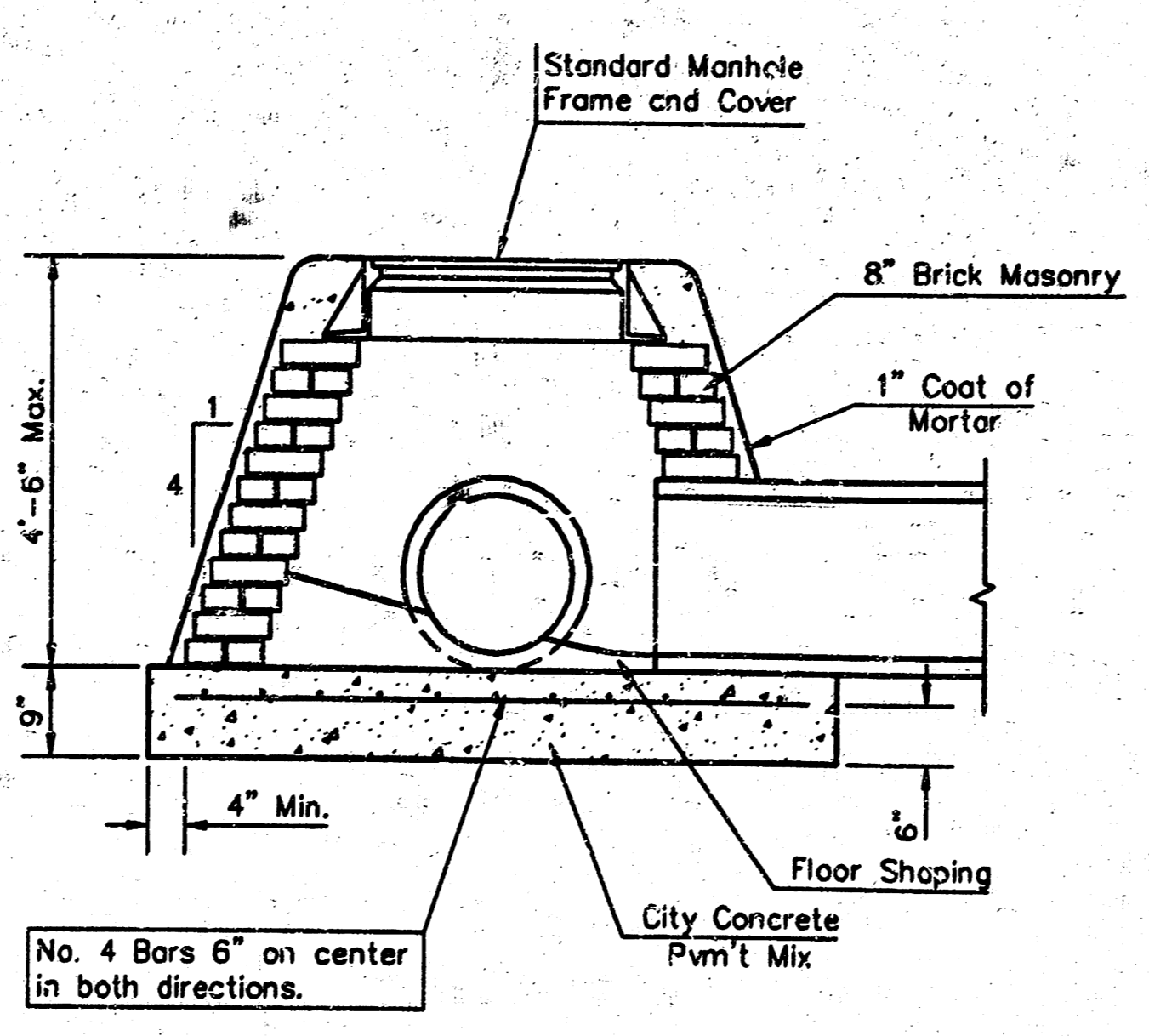


**MASONRY COLLAR DETAIL**

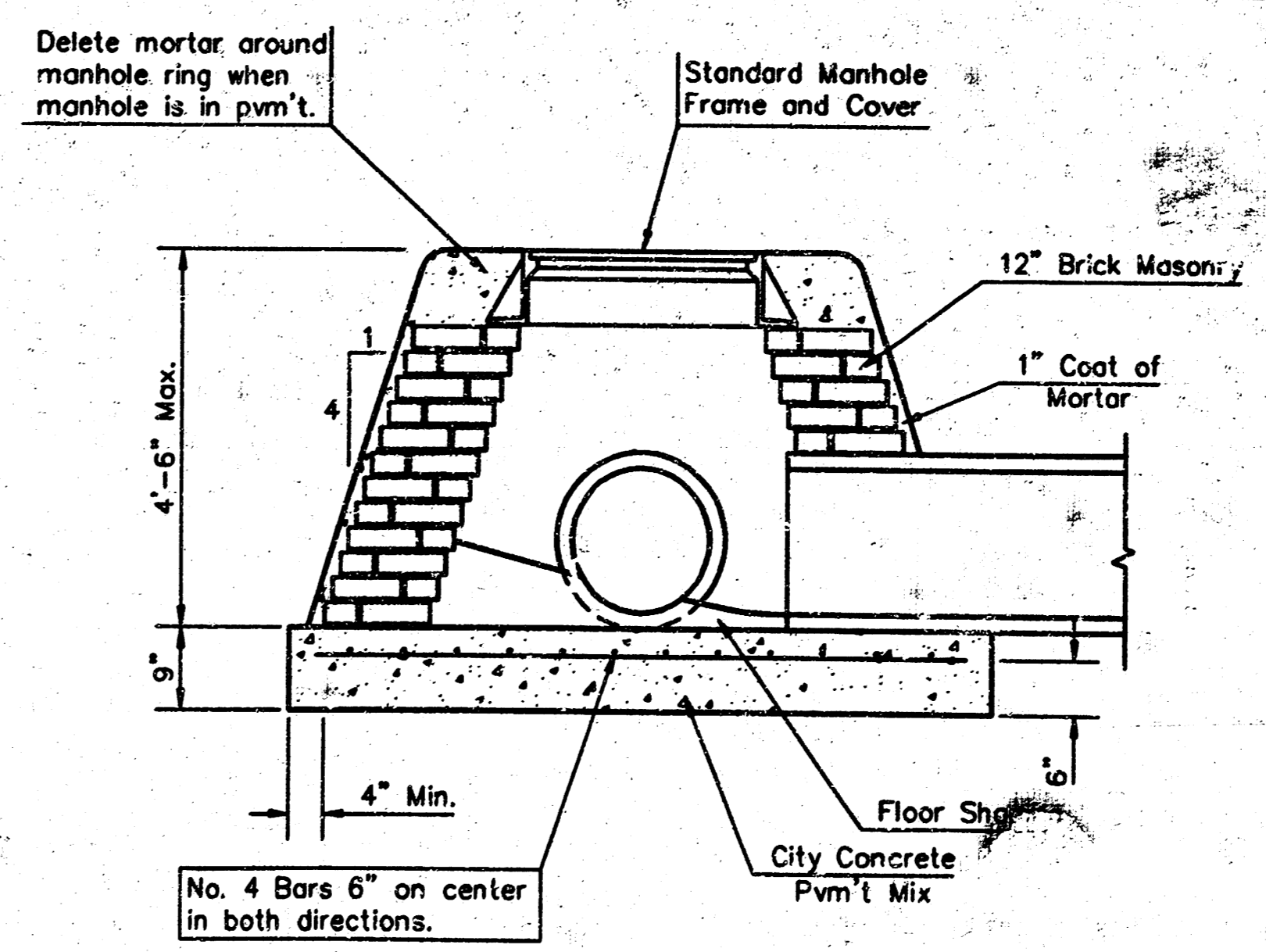


**SECTION A-A**

**FLAT CONCRETE SLAB DETAILS**



**SPECIAL SHALLOW TYPE "A" MANHOLE**



**SPECIAL SHALLOW TYPE "B" MANHOLE**

**GENERAL NOTES**

- Mortar used in masonry construction shall contain 8 sacks of cement per cubic yard. Concrete used in manhole bases shall conform to the requirements of concrete for concrete pavement construction as specified in the city standard paving specifications using city concrete cement mix without air entraining admixture. Mortar shall be placed around the manhole ring as shown on the drawings when manholes are constructed in unpaved areas. Manholes constructed where pipe sizes are smaller than 24" shall have an inside diameter of 4". Manholes constructed where pipe sizes are 24" or larger shall have an inside diameter of 5". Completed manhole shall be without leaks and water tight.
- Reinforcing steel shall be installed in the manhole bases and shall consist of no. 4 bars placed on 6" centers in both directions. The manhole base reinforcement shall be placed 6" above the bottom of the manhole base. All costs for furnishing and installing reinforcing steel shall be included in the unit price bid for the manhole.
- The floors of all manholes shall be sloped with flow channels such that the manholes will be self cleaning and free of areas where solids could be deposited as sewage flows through the manhole from all inlet pipes to the outlet pipe. Flow channels shall be formed to match the bottom halves of the inflowing pipes and the outflowing pipe as shown by the drawings. Manhole floors shall have slopes of 3 inches per foot in the areas outside of the flow channels sloped toward the flow channels. Pipes laid through manholes shall have the top half removed to neat lines for the full inside diameter of the manhole. Manhole floors shall then be sloped around the bottom half of the pipe which forms the flow channel.
- Pipes installed within the excavation made for the manhole shall be cradled with concrete to the limits of the manhole excavation. When clay pipe is used, the cradle shall extend to the first joint outside the manhole. The cradle shall be terminated at the clay pipe joint in a manner which will maintain the flexibility of the joint. Cost of cradle within manhole excavation or to clay pipe joints adjacent to manhole shall be included in the unit price bid for the manhole.
- Manhole cover castings and manhole frame castings shall conform to the requirements as indicated in the standard specifications and as shown in the standard detail drawings.
- The crowns of inflowing pipes shall never be set lower than the crown of the outflowing pipe.
- Standard shallow manholes type "P" and "C" shall be paid for at the unit price bid per each for the type and diameter indicated. All standard shallow manhole diameters will be 4' unless indicated otherwise.
- All brick used in manhole construction shall meet Grade SW of ASTM C652 or C62-87.

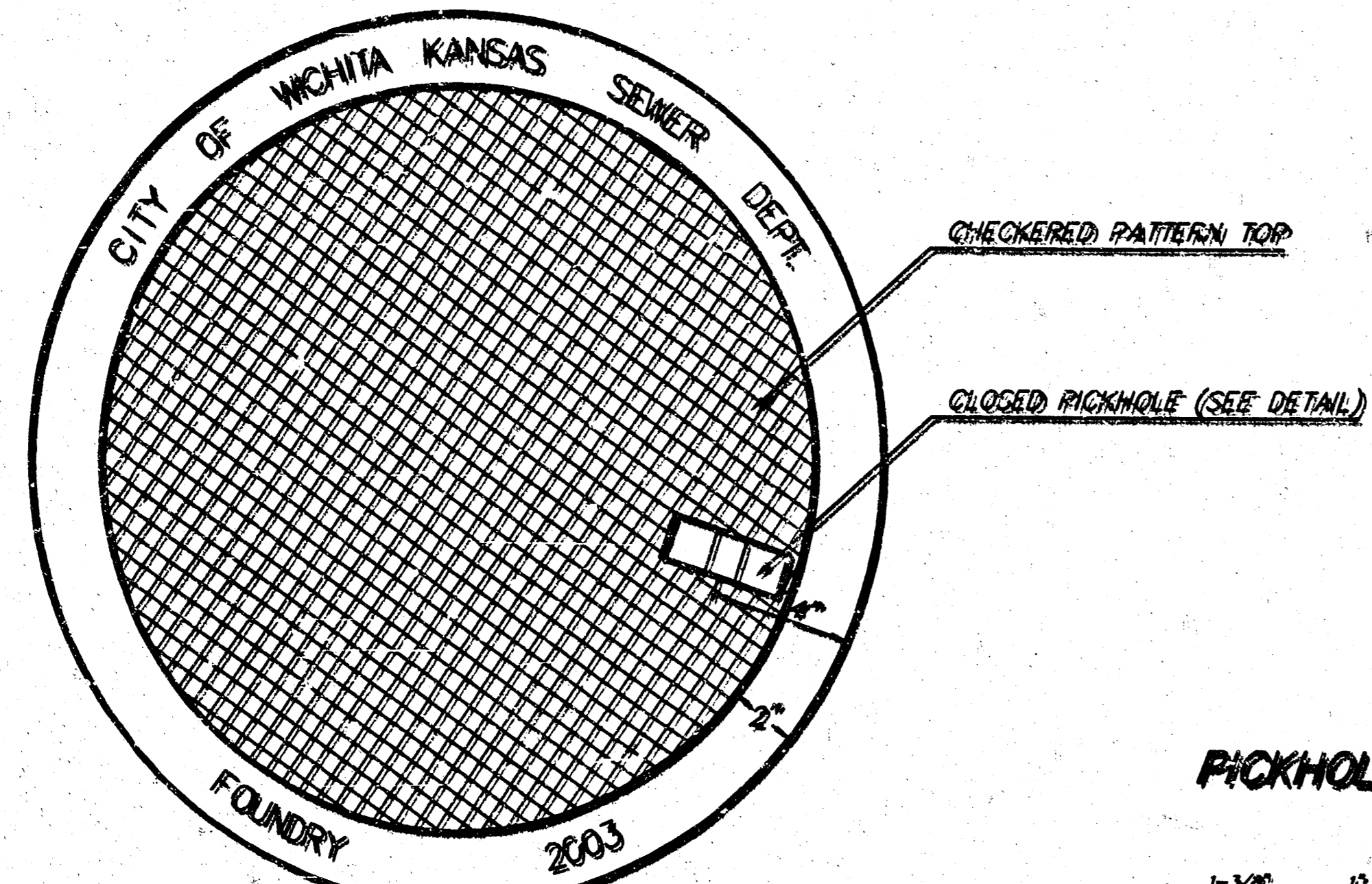
CITY OF WICHITA, KANSAS  
**STD. SHALLOW MANHOLES**  
 TYPES A, B, C & P

**BAUGHMAN COMPANY P.A.**  
 ENGINEERING, SURVEYING, & PLANNING  
 316-252-7211 • 315 E. LILY • WICHITA, KANSAS 67211

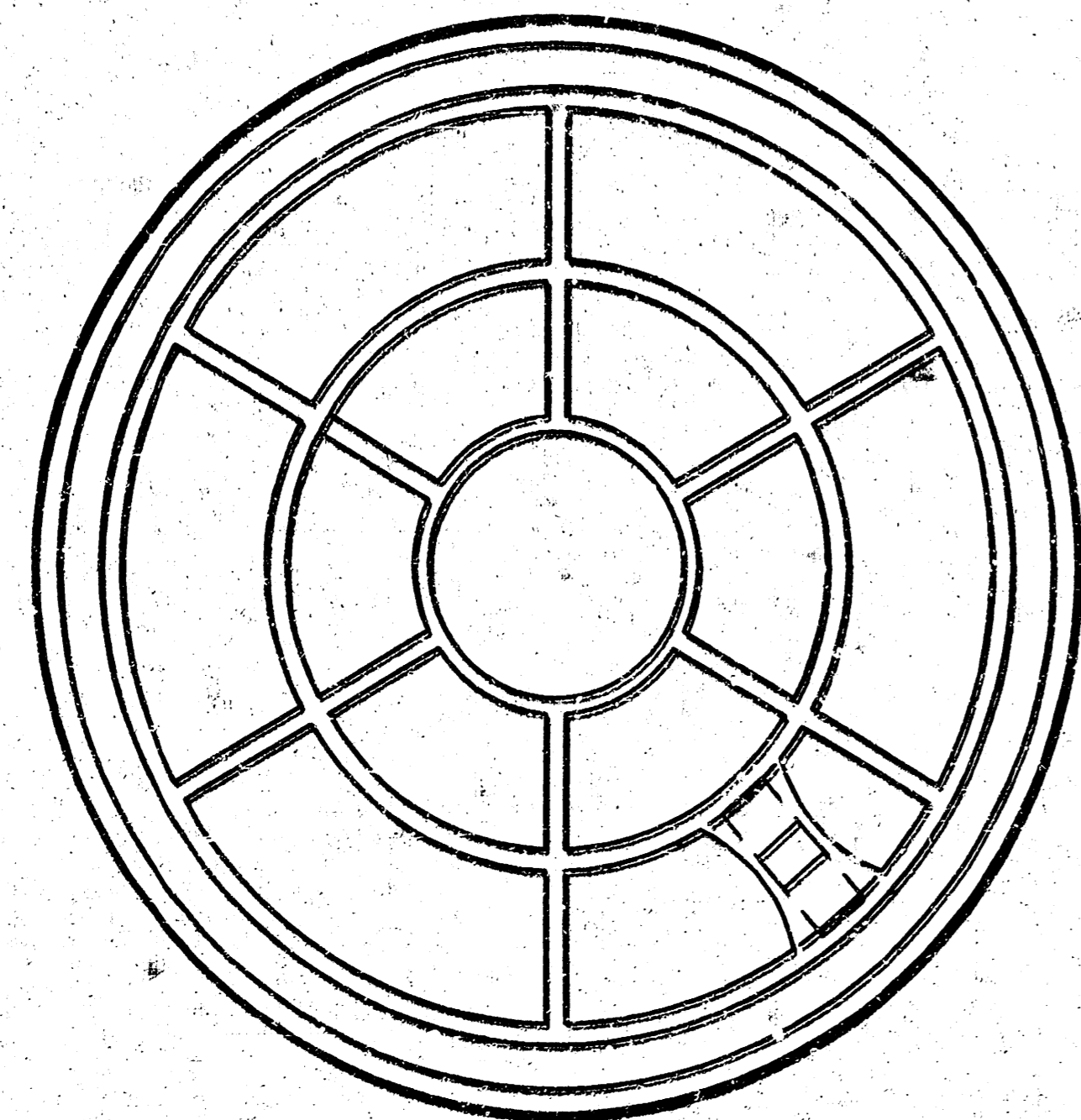
PROJECT NUMBER  
**1354 PPS (607861)**

DESIGN STAFF    DRAWN STAFF    APPROVED STAFF    DATE 6/03    SCALE NONE    SHEET 2 OF 5

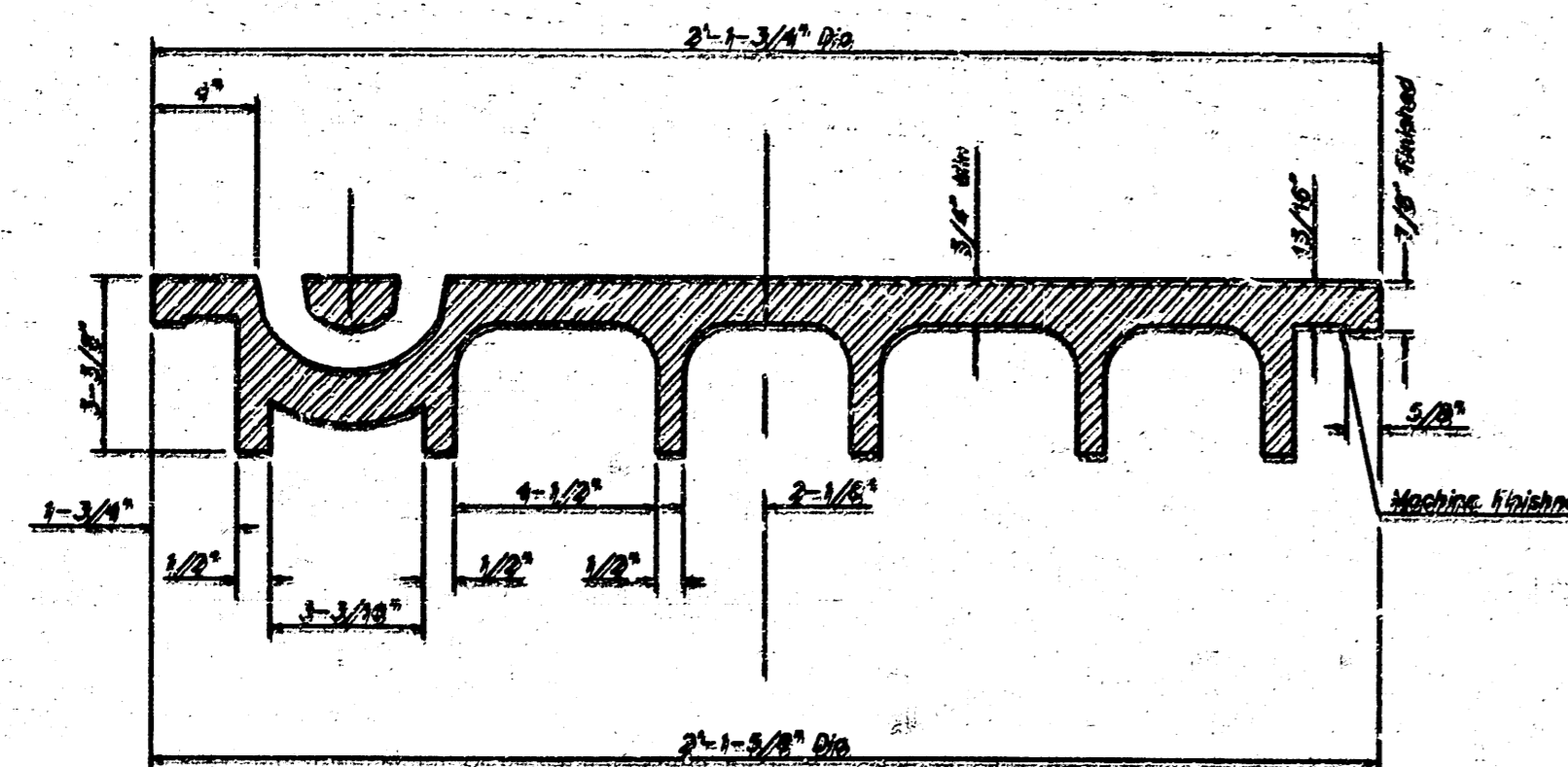
**MANHOLE COVER**  
Weight = 180 Lbs.



TOP VIEW



BOTTOM VIEW

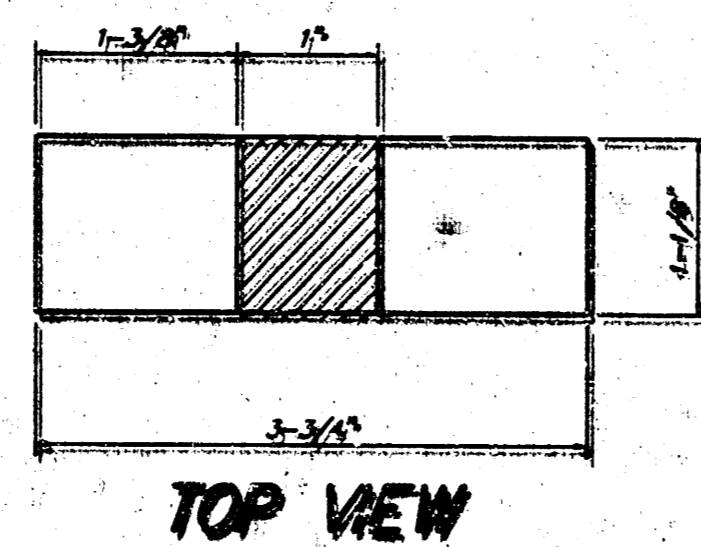


SECTION VIEW

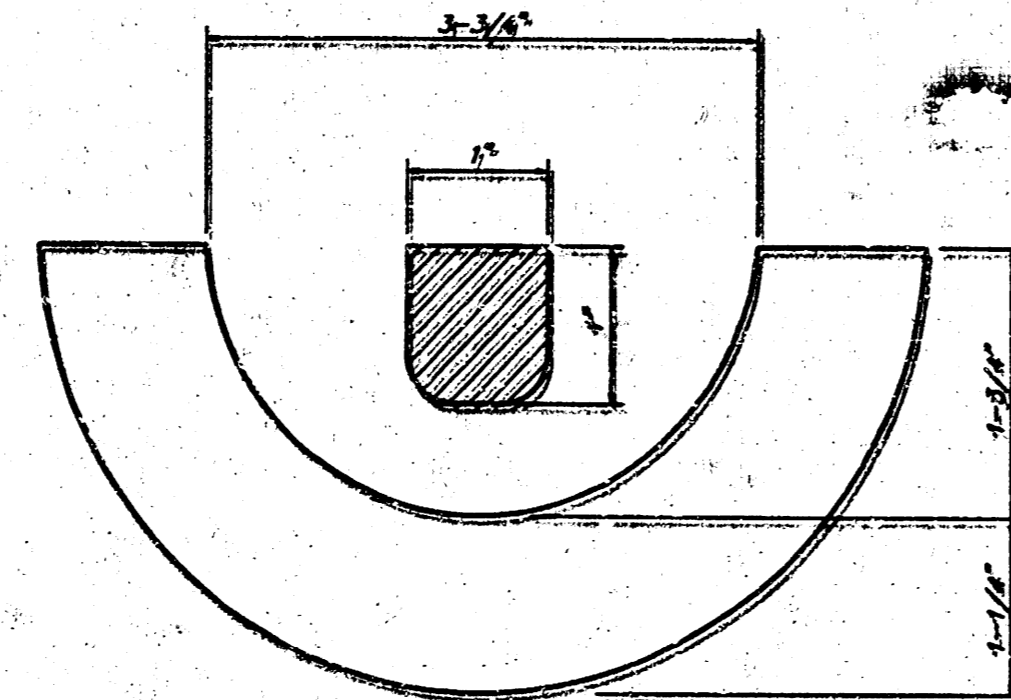
# MANHOLE FRAME AND COVER DETAIL

ADOPTED AS STANDARD DESIGN BY  
CITY OF WICHITA, KANSAS

PICKHOLE DETAIL

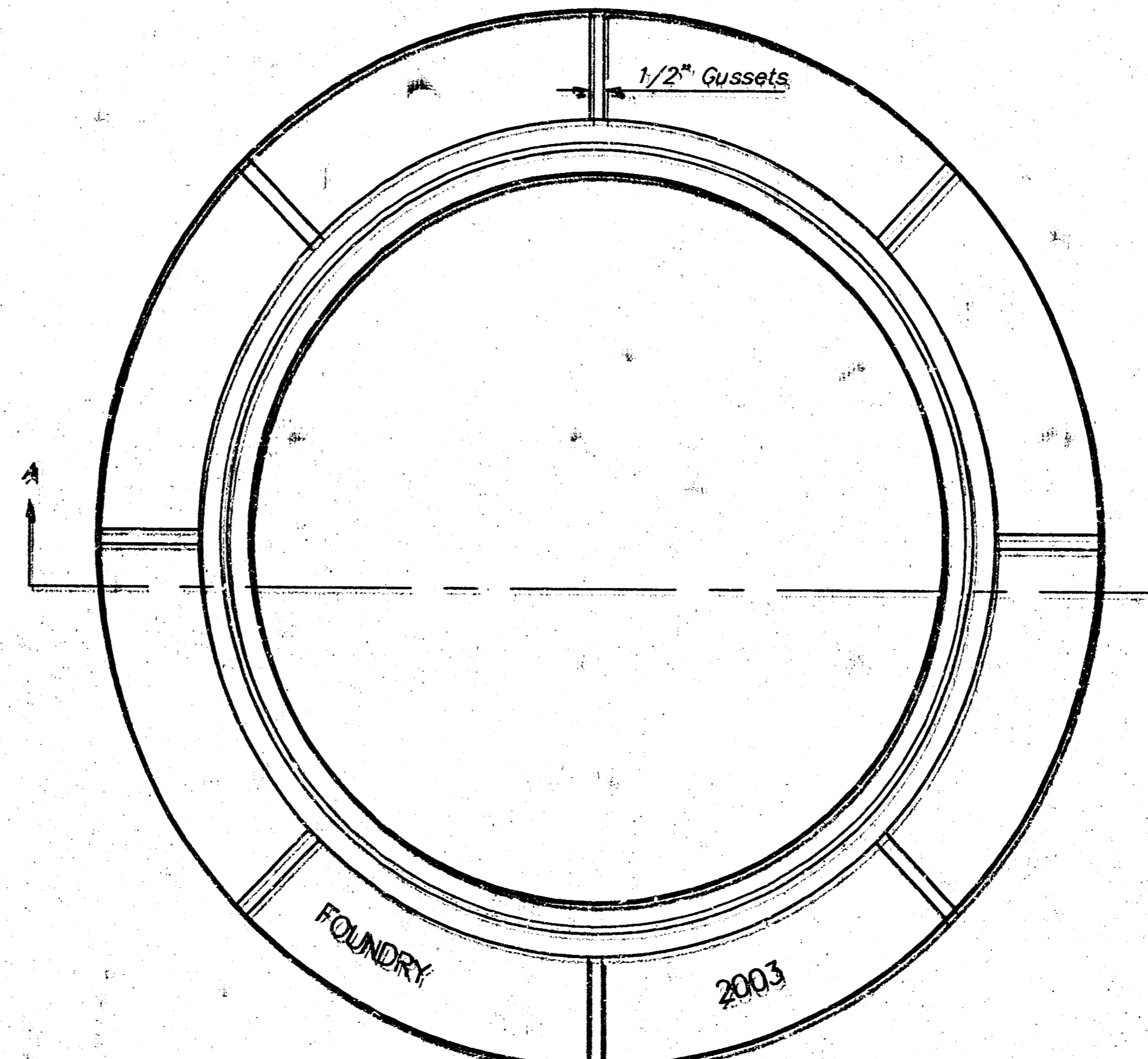


TOP VIEW

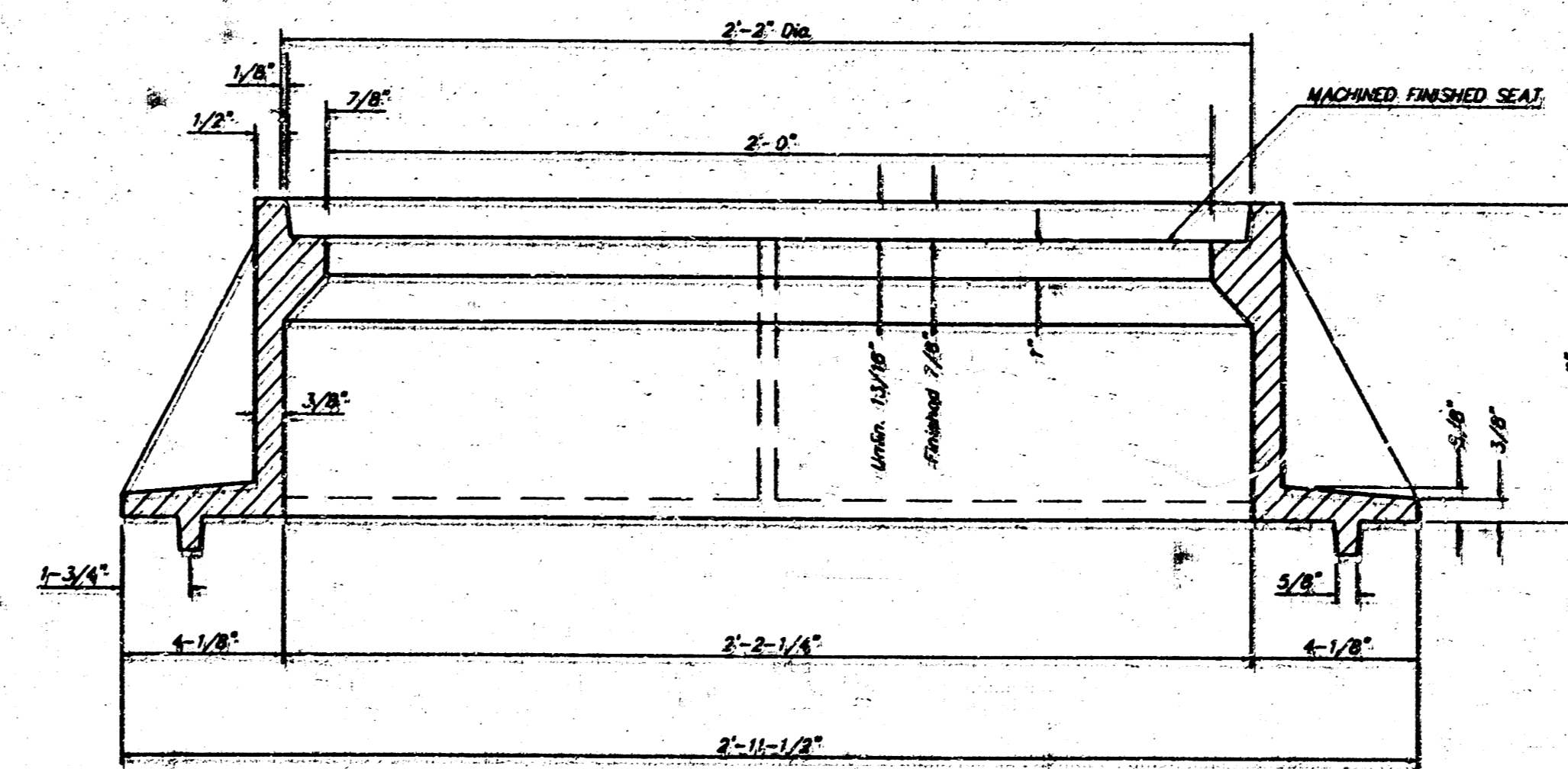


SECTION VIEW

**MANHOLE FRAME**  
Weight = 145 Lbs.



TOP VIEW



SECTION A-A

## GENERAL NOTES

MANHOLE CASTINGS SHALL BE MANUFACTURED USING GOOD QUALITY GRAY IRON CONFORMING TO CLASS 30 OF A.S.T.M. DESIGNATION, A-48. DIMENSIONS AND WEIGHTS SHOWN ON THE DETAILED DRAWINGS SHALL BE CONSIDERED AS MINIMUM REQUIREMENTS AND ANY DEVIATIONS FROM THE DIMENSIONS SHOWN MUST BE SPECIFICALLY APPROVED. THE FINISHED CASTINGS SHALL BE OF UNIFORM QUALITY, FREE FROM BLOWHOLES, POROSITY, HARD SPOTS, SHRINKAGE DISTORTIONS OR OTHER DEFECTS.

MANHOLE CASTINGS SHALL BE COATED WITH AN ASPHALT PAINT RESULTING IN A SMOOTH, TOUGH AND TENACIOUS COATING WHICH IS NOT BRITTLE OR TACKY.

MANHOLE CASTINGS SHALL BE MANUFACTURED SUCH THAT A COVER MANUFACTURED BY ANY ONE FOUNDRY WILL FIT INTERCHANGEABLY INTO A FRAME MANUFACTURED BY ANOTHER FOUNDRY AND STILL MEET ALLOWABLE CLEARANCES AND NON-ROCKING REQUIREMENTS. THIS WILL REQUIRE MANUFACTURING OF THE MATCHING FACES ON THE COVER AND THE FRAME TO CLOSE TOLERANCES.

THE OUTSIDE CIRCUMFERENCE OF THE VERTICAL FACE OF THE COVER AND THE INSIDE CIRCUMFERENCE OF THE VERTICAL FACE IN THE FRAME RECESS SHALL BE MANUFACTURED TO TOLERANCES SUCH THAT THE CLEARANCE BETWEEN THE COVER AND FRAME WILL NOT EXCEED 1/8" AT ANY POINT AROUND THE CIRCUMFERENCE OF THE COVER. THE SEATING SURFACES BETWEEN THE COVER AND FRAME SHALL BE MACHINED SUCH AS THESE SURFACES SHALL MAKE FULL CONTACT FOR THEIR FULL CIRCUMFERENCE TO PRECLUDE THE COVER FROM ROCKING IN THE FRAME.

THE MANHOLE FRAME AND COVER SHALL BE MARKED WITH LETTERING INDICATING THE NAME OF THE MANUFACTURER AND THE YEAR WHEN THE COVER OR FRAME WAS CAST. THE COVER SHALL BE FURTHER IDENTIFIED WITH REGARDS TO OWNERSHIP USING LETTERS AT LEAST 1 INCH IN HEIGHT. THIS IDENTIFICATION SHALL BE "CITY OF WICHITA SEWER DEPARTMENT". THE WORD DEPARTMENT MAY BE ABBREVIATED. THE TEXTURE OF THE TOP SURFACE OF THE COVER SHALL BE MANUFACTURED IN A CHECKERED PATTERN DESIGN AS INDICATED ON THE DRAWING. SMOOTH BLOCKOUTS SHALL BE UTILIZED TO HIGHLIGHT THE LETTERING ON THE COVER SURFACE. THE TOTAL AREA OF SMOOTH SURFACE BLOCKOUT SHALL NOT EXCEED THE AREA AS INDICATED ON THE DRAWING. POSITIONING OF SMOOTH BLOCKOUTS AND LETTERING MAY VARY FROM THAT SHOWN ON THE DETAILED DRAWING.

MANHOLE FRAME AND COVER DETAIL

ADOPTED AS STANDARD DESIGN BY  
CITY OF WICHITA, KANSAS

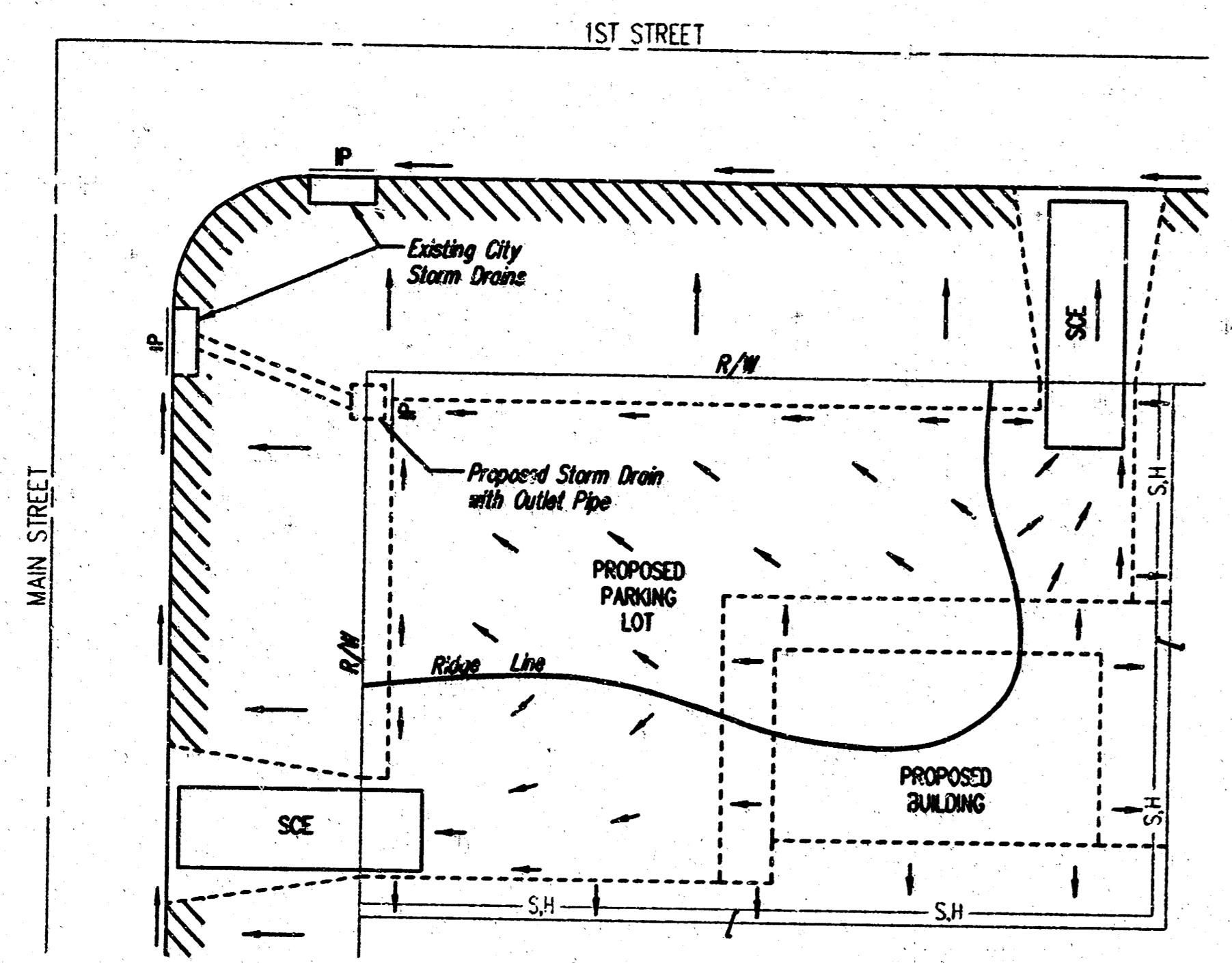
**BAUGHMAN COMPANY P.A.**  
ENGINEERING, SURVEYING, & PLANNING

315-282-7271 • 315 ELLIS • WICHITA, KANSAS 67211

PROJECT NUMBER  
**1254 PPS (607881)**

DESIGN STAFF    DRAWN STAFF    APPROVED Staff    DATE 7/03    SCALE NONE

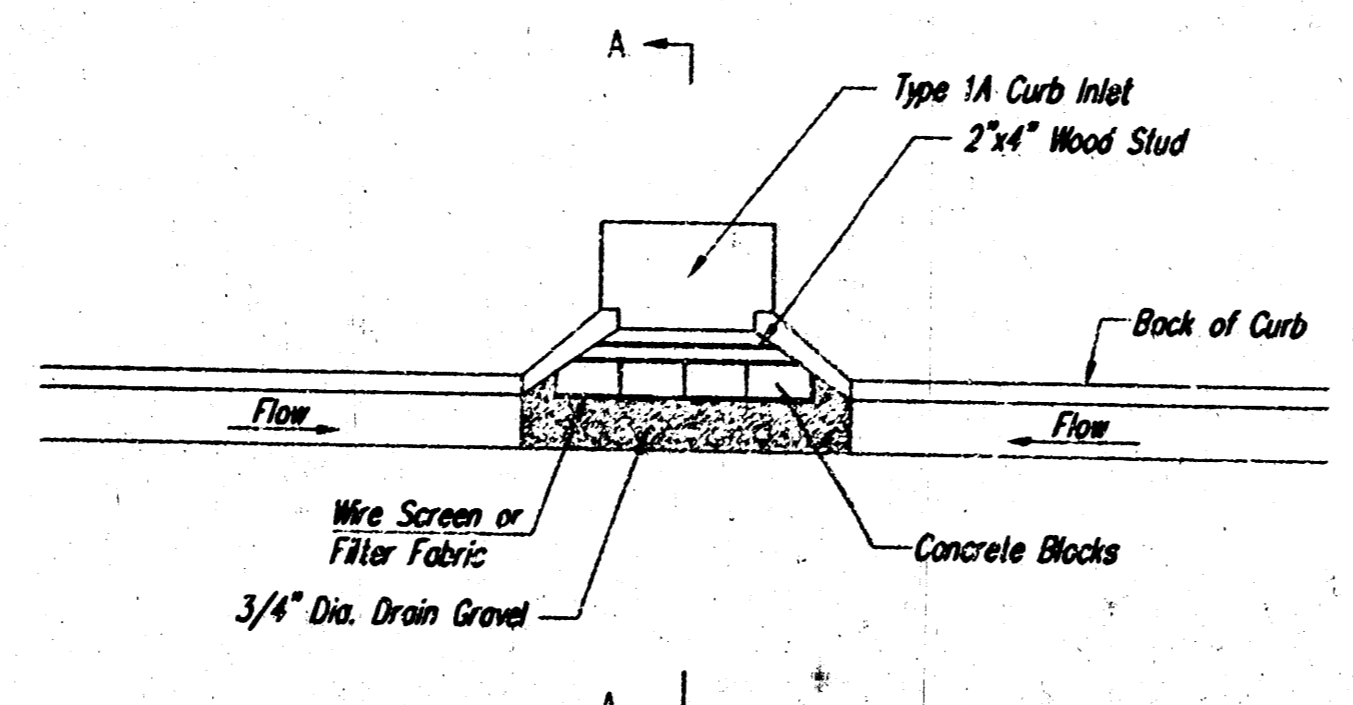
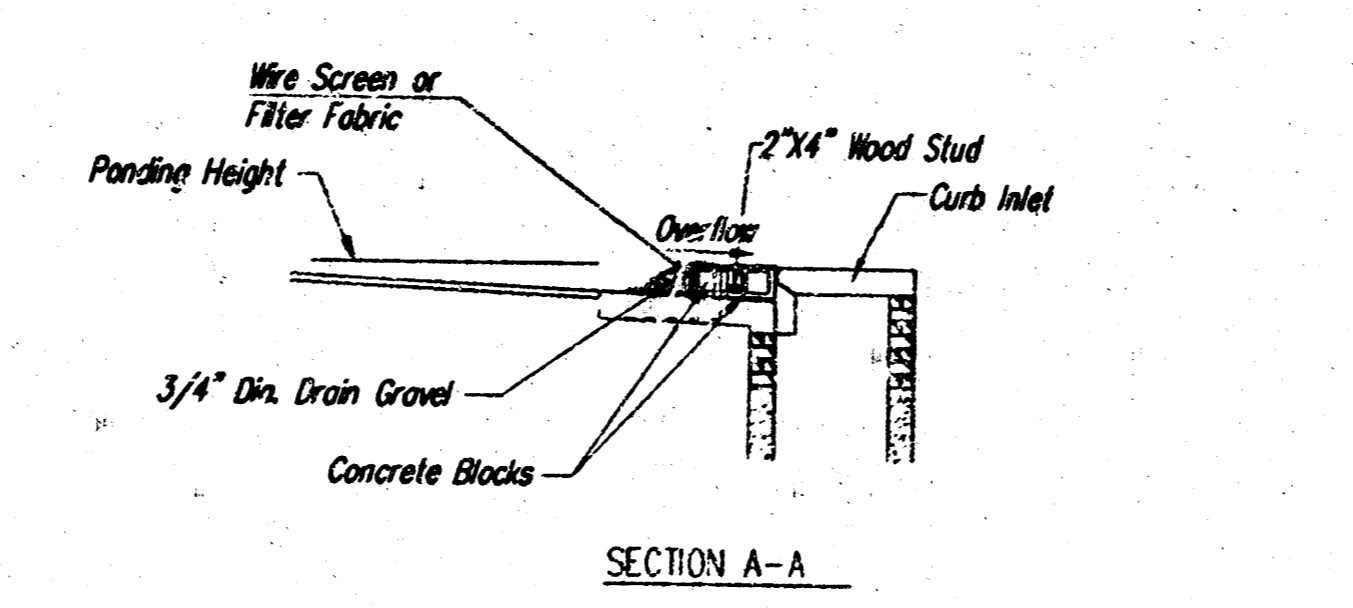
SHEET  
OF  
**3**



- LEGEND**
- Flow Direction
  - IP Inlet Protection - to be provided at all inlets subject to silt laden runoff.
  - S.H- Silt Fence or Hay Bale Barrier - to be installed along property lines where runoff from construction site can run onto other properties.
  - SCE Stabilized Construction Entrance - to be used at all locations where vehicles or equipment enter or exit property.
  - Back of Curb Protection - to be installed whenever curb is backfilled to less than 3 inches from top and disturbed earth exists adjacent thereto. (See City Standard Details).

**General Notes**

1. This standard detail sheet is a part of your building permit. The BMP's shown on this sheet are considered minimum standards. Whenever sediment enters the streets, storm sewers, ditches, or ponds, contractor will install additional BMP's, as needed, to correct the problem.
2. Follow these general principles on all commercial building sides.
3. The soil erosion BMP's shown herein must be in place at all times during construction until such time as the site is re-established with paving or grass.
4. Failure to install, protect, and maintain BMP's are violations of Section 16.32 of the City Code and will subject the contractor to the penalties provided therein. Included with your permit is an orange "notice" sign that must be posted on-site in a conspicuous place at all times during construction. This sign is provided to assist you in the maintenance of BMP's.
5. Back of Curb Protection: Can include hay bales, silt fence, or silt barrier, as shown on City BMP standard details. This BMP must remain in place until the area between the curb and right-of-way line has been permanently stabilized.
6. The General Contractor is responsible for the installation and maintenance of all BMP's.
7. Should the site obstruct a lake, BMP's will be installed to prevent sediment from entering the lake.
8. Any mud inadvertently tracked onto any street will be cleaned up by the general contractor at the end of each day's work.



**CURB INLET GRAVEL FILTERS**  
(INLET PROTECTION-RESIDENTIAL STREETS ONLY)  
NOTE: Other types of curb inlet protection may be approved by the city so long as equal protection is provided.

A gravel inlet filter shall be installed at sump locations on residential streets. This type of protection is not to be used on arterial or collector streets of any time that it would pose an undue traffic hazard.

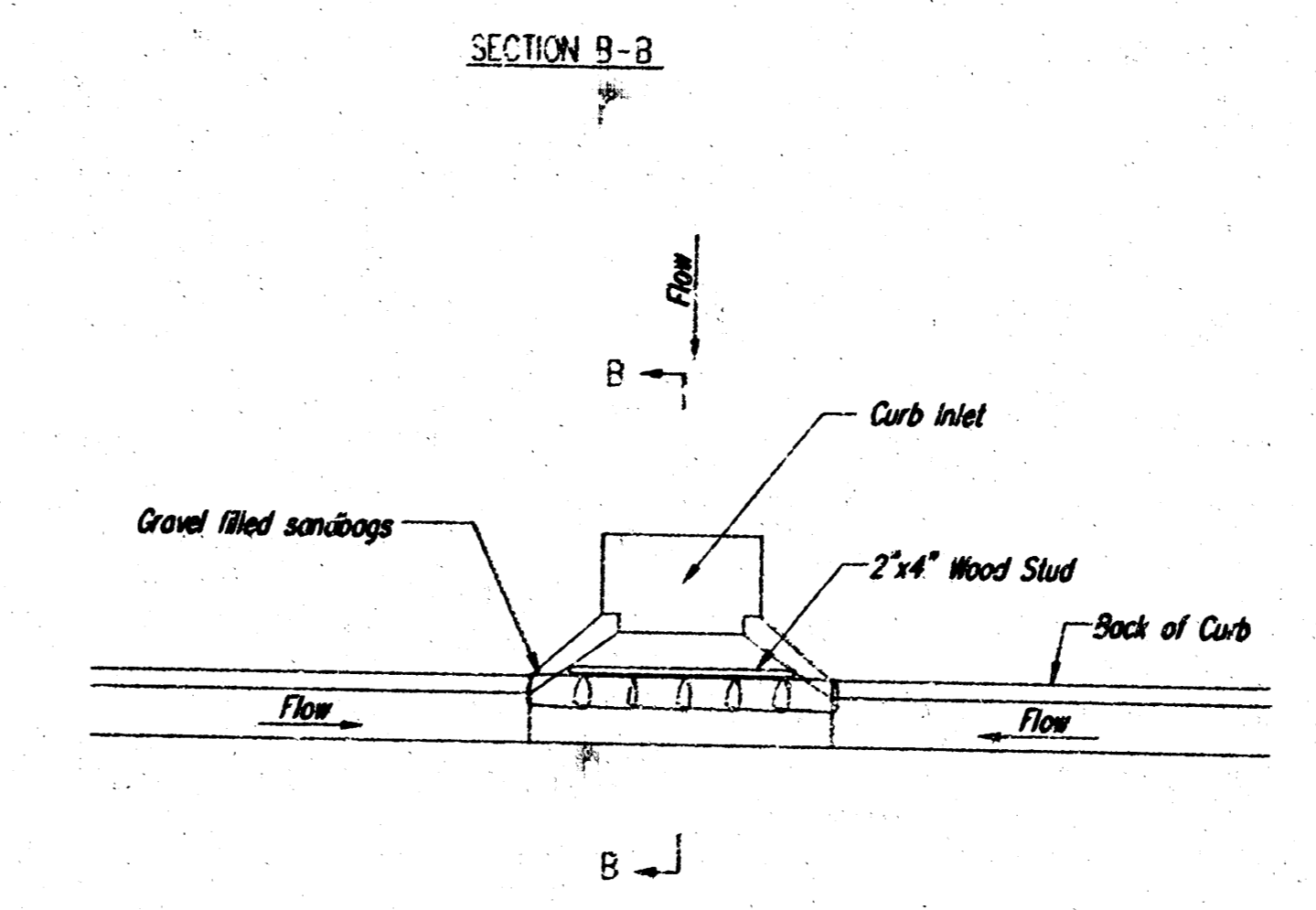
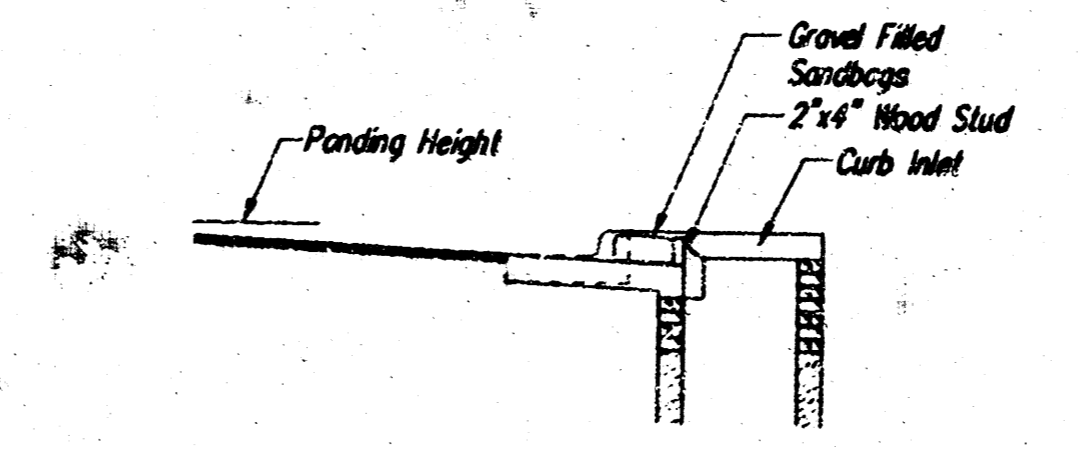
**Instructions for Installing:**

- STEP 1: Place concrete blocks around the inlet as shown on drawing. Insert 2x4 board as shown.
- STEP 2: Wrap 1/2" mesh wire screen around the concrete blocks.
- STEP 3: Place 1" to 1-1/2" diameter rock around the blocks and wire screen. Be sure the rock extends down from the top of the concrete block.
- STEP 4: To prevent damage to vehicles, signs warning drivers about the structures may be necessary. An alternative installation is the use of gravel bags supported by a 2"x4" board to prevent collapsing.

Use of rock with diameters smaller than 1" in the bag may result in clogging of pores and reduce the amount of water flowing into an inlet.

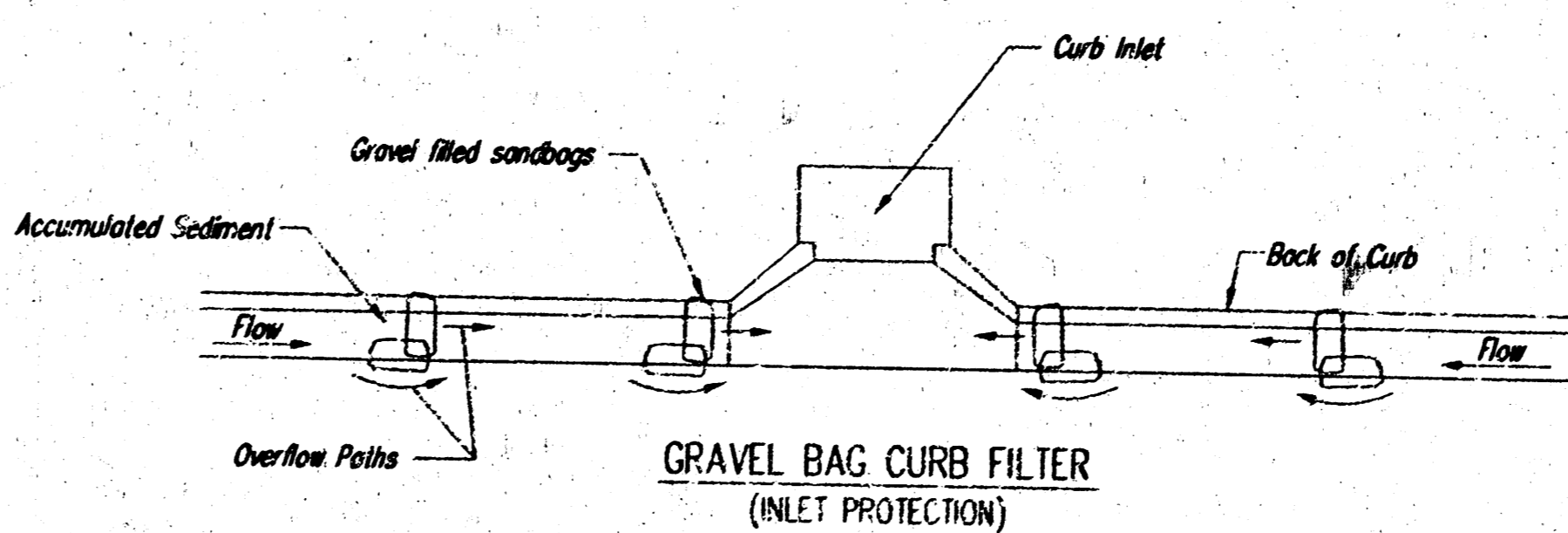
**Maintenance:**

All curb inlet gravel filters shall be inspected and repaired after each runoff event. Sediment deposits are to be removed once material is within 8 cm (3 inches) of the top of any block. Periodically, the gravel shall be raked to increase infiltration and filtering of runoff waters. Accumulated sediment is to be removed immediately from roads and streets.



**CURB INLET SANDBAG FILTERS**  
(INLET PROTECTION)

NOTE: Other types of curb inlet protection may be approved by the City so long as equal protection is provided.



**GRAVEL BAG CURB FILTER**  
(INLET PROTECTION)

NOTE: Place two or more sets of bags in a manner that results in maximum support. The flow line bag must be lower than top of curb.

**CURB SEDIMENT TRAPS**

When inlets are located on streets having a grade (i.e., sump conditions do not exist), installing gravel (or sand) bags in the gutter flow line to create small sediment traps can be considered. Gravel bags are recommended over sand bags to allow for drainage.

If the spacing between bags becomes too large, little sediment may be trapped. Spacing of bags should be completed using the table or graph that illustrates placement distances based upon street slope. When installed in the gutter, bag tops must be lower than the sidewalk.

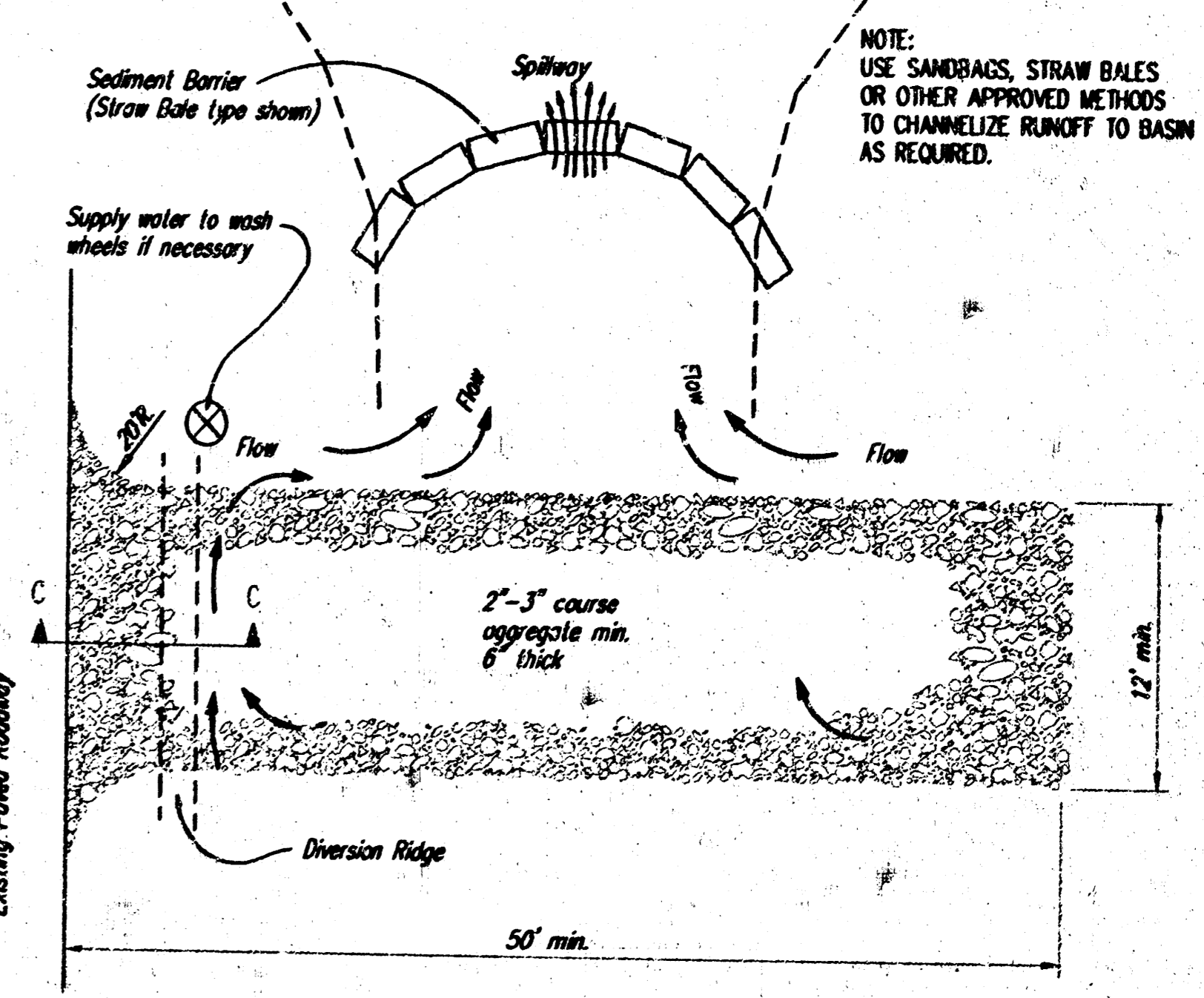
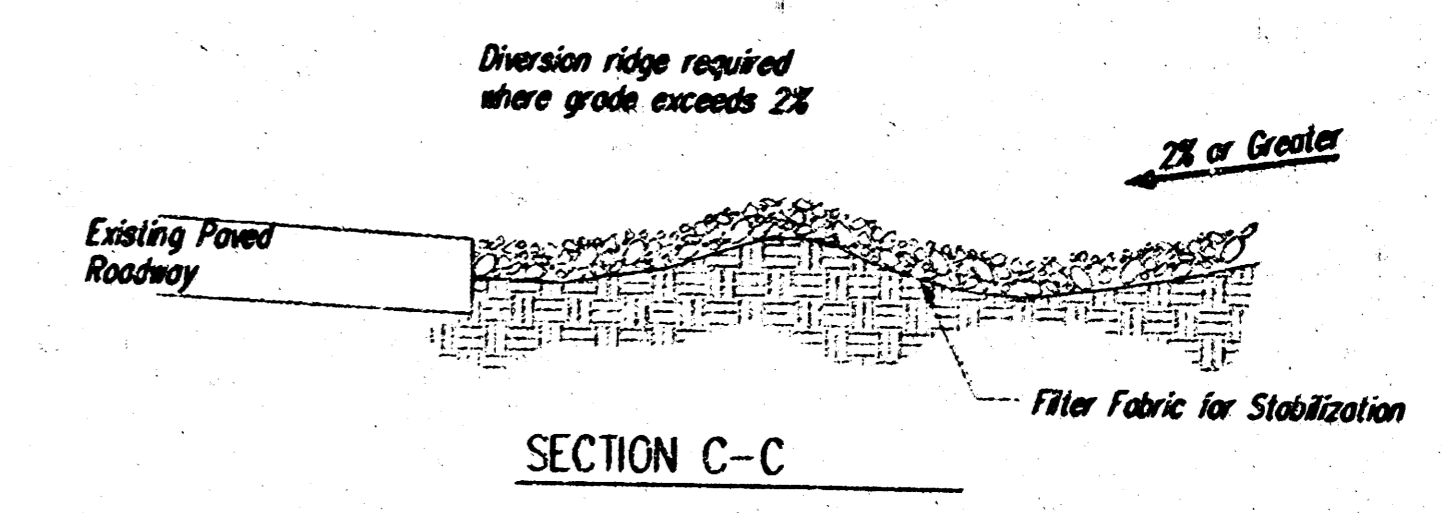
**Spacing:**

Gravel bags are to be placed according to street grades using the following table or graph that appears below.

GRADE (%)	SPACING (FEET)
0.5	75
1.0	45
2.0	18
3.0	12
4.0	9
5.0	6

**Maintenance:**

Collected sediment shall be removed after every runoff event. Bags that are destroyed by vehicular traffic or through natural deterioration are to be immediately replaced.



**STABILIZED CONSTRUCTION ENTRANCE**

**NOTES:**

1. THE ENTRANCE SHALL BE MAINTAINED IN A CONDITION THAT WILL PREVENT TRACKING OR FLOWING OF SEDIMENT ONTO PUBLIC RIGHTS-OF-WAY. THIS MAY REQUIRE TOP DRESSING, REPAIR AND/OR CLEANOUT OF ANY MEASURES USED TO TRAP SEDIMENT.
2. WHEN NECESSARY, WHEELS SHALL BE CLEANED PRIOR TO ENTRANCE ONTO PUBLIC RIGHTS-OF-WAY.
3. WHEN WASHING IS REQUIRED, IT SHALL BE DONE ON AN AREA STABILIZED WITH CRUSHED STONE THAT DRAINS INTO AN APPROVED SEDIMENT TRAP OR SEDIMENT BASIN, AS SHOWN ABOVE.
4. DRIVE ENTRANCES ONTO RESIDENTIAL LOTS WILL NOT BE REQUIRED TO HAVE THE SEDIMENT BARRIER SHOWN, BUT WHEEL WASHING MAY BE REQUIRED IF STABILIZED ENTRANCE IS NOT SUFFICIENT TO KEEP MUD FROM BEING TRACKED ONTO ADJACENT STREET. ENTRANCE SHALL EXTEND FROM BACK OF CURB TO DWELLING.

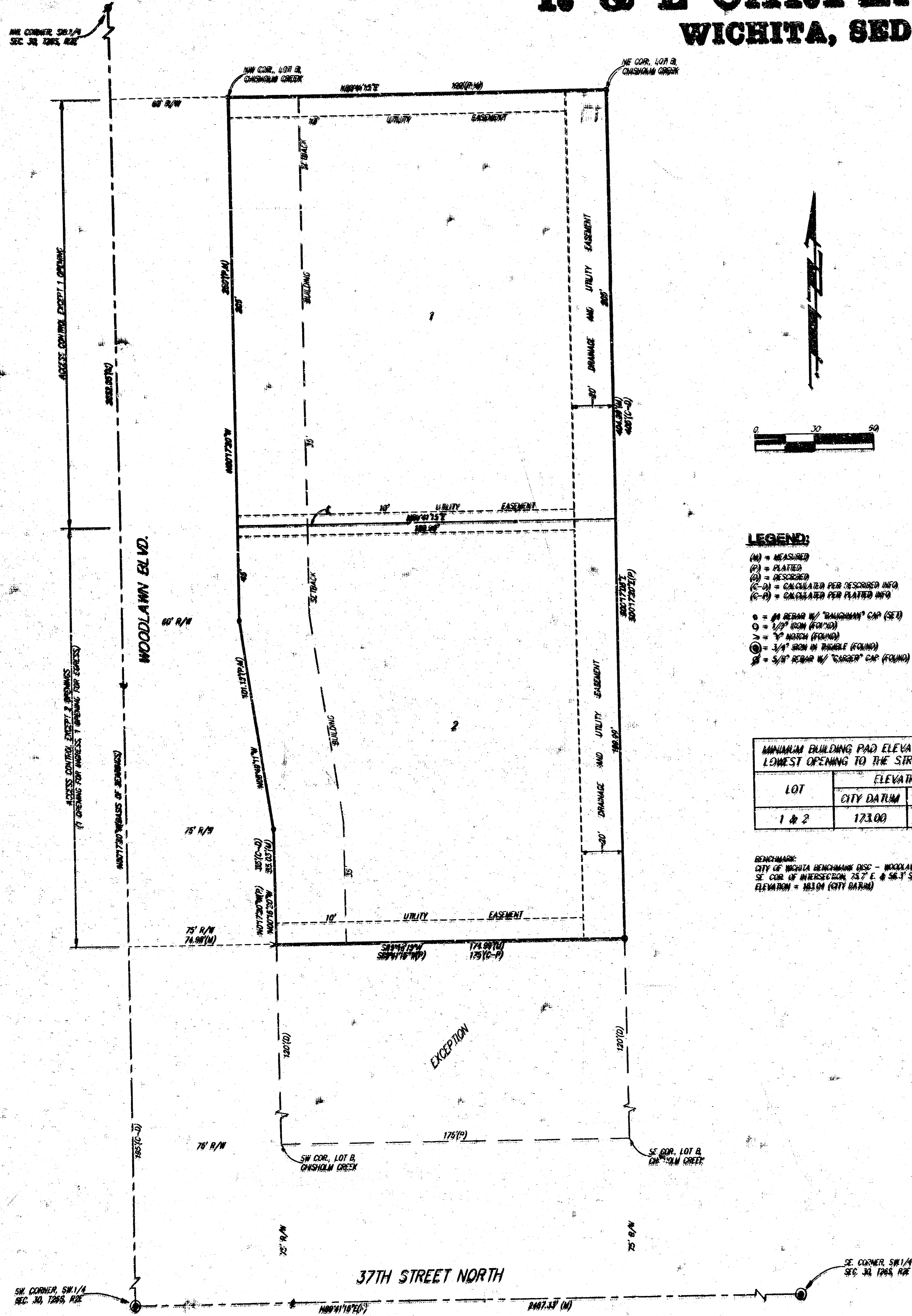


**SOIL EROSION  
BMP DETAILS**

CHRISTOPHER M. CARRIER, P.E.  
STORM WATER ENGINEER

PROJECT NUMBER 1354 PPS (607861)	DATE 07/03	DATE 07/03	DATE 07/03
DATE 07/03		DATE 07/03	

# R & L CARPENTER 3RD ADDITION WICHITA, SEDGWICK COUNTY, KANSAS



- LEGEND:**
- (M) = MEASURED
  - (P) = PLATED
  - (R) = RECORDED
  - (C-M) = CALCULATED PER DESCRIBED INFO
  - (C-P) = CALCULATED PER PLATED INFO
- = 1/4" REBAR W/ "BAINHAM" CAP (SET)
  - = 1/2" SON (FOUND)
  - = 1" SON (FOUND)
  - = 1 1/2" SON IN TRIPLE (FOUND)
  - = 5/8" REBAR W/ "CURRER" CAP (FOUND)

LOT	ELEVATION	
	CITY DATUM	M.S.L.
1 & 2	173.00	1360.40

BENCHMARK:  
CITY OF WICHITA BENCHMARK DISC - WOODLAWN AND 37TH ST NO.  
SE COR. OF INTERSECTION, 75.7' E & 56.3' S OF E. BORN  
ELEVATION = 1831.0 (CITY DATUM)

State of Kansas) SS We, Baughman Company P.A., Surveyors in aforesaid Sedgwick County and State do hereby certify that we have surveyed and platted "R & L CARPENTER 3RD ADDITION", Wichita, Sedgwick County, Kansas, and that the accompanying plat is a true and correct exhibit of the property surveyed, described as and being a replat of Lot 8, except the 50' x 120' feet thereof, Block 8, Chisholm Creek Addition to Sedgwick County, Kansas.

All being situated in the SW 1/4 of Sec. 30, Twp. 28-S, R-2-E of the 4th P.M., Sedgwick County, Kansas.

Existing public easements and dedications being vacated by virtue of K.S.A. 12-512(h).

Baughman Co., P.A.

Michael G. Conroy, Surveyor  
15-07182-97

Know all men by these presents that we, the undersigned, have caused the land in the surveyors certificate to be platted into lots to be known as "R & L CARPENTER 3RD ADDITION", Wichita, Sedgwick County, Kansas. The utility easements are hereby granted as indicated for the construction and maintenance of all public utilities. The drainage and utility easement is hereby granted as indicated for drainage purposes and for the construction and maintenance of all public utilities. All abutters rights of access to or from Woodlawn Blvd. over and across the west line of Lots 1 and 2 are hereby granted to the City of Wichita, Kansas provided, however, that Lot 1 shall have access to Woodlawn Blvd. at one location and Lot 2 shall have access to Woodlawn Blvd. at two locations, (one opening for ingress and one opening for egress), all as shall be determined by the City Engineer of the City of Wichita, Kansas. The Minimum Building Pad Elevation for the lowest opening to the structures for Lots 1 and 2 shall be 173.00 City Datum (1360.40 M.S.L.).

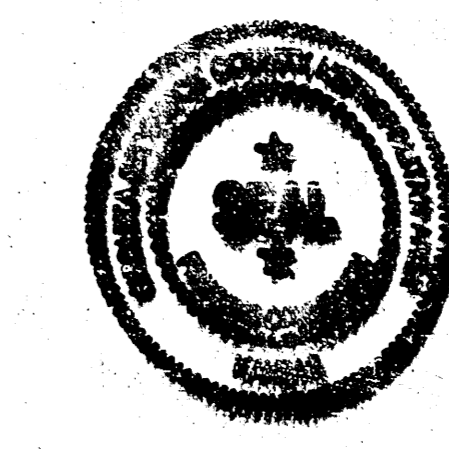
R & L Carpenter Enterprises, LLC

Roger L. Carpenter, Member

State of Kansas) SS The foregoing instrument acknowledged before me, this 24th day of August, 1997, by Roger L. Carpenter, Member of R & L Carpenter Enterprises, LLC, on behalf of the company.

My App. Exp. 10-13-97

This plat of R & L CARPENTER 3RD ADDITION, an Addition to Wichita, Sedgwick County, Kansas, has been submitted to and approved by the Wichita-Sedgwick County Metropolitan Area Planning Commission, Wichita, Kansas. Dated this 14th day of July, 1997. Wichita-Sedgwick County Metropolitan Area Planning Commission



John G. Foy, Chairman  
Marn S. Hunt, Secretary

This plat approved and all dedications shown hereon accepted by the City Council of the City of Wichita, Kansas, this 23rd day of September, 1997.

Bob Knight, Mayor  
Pat Burnett, City Clerk

Entered on transfer record this 15th day of October, 1997.



James Hurd, County Clerk

State of Kansas) SS This is to certify that this plat has been filed for record in the office of the Register of Deeds, this 15th day of October, 1997, at 4:11 a.m. and is duly recorded.

Register of Deeds

Michael D. Hunt, Deputy

#1639610

