

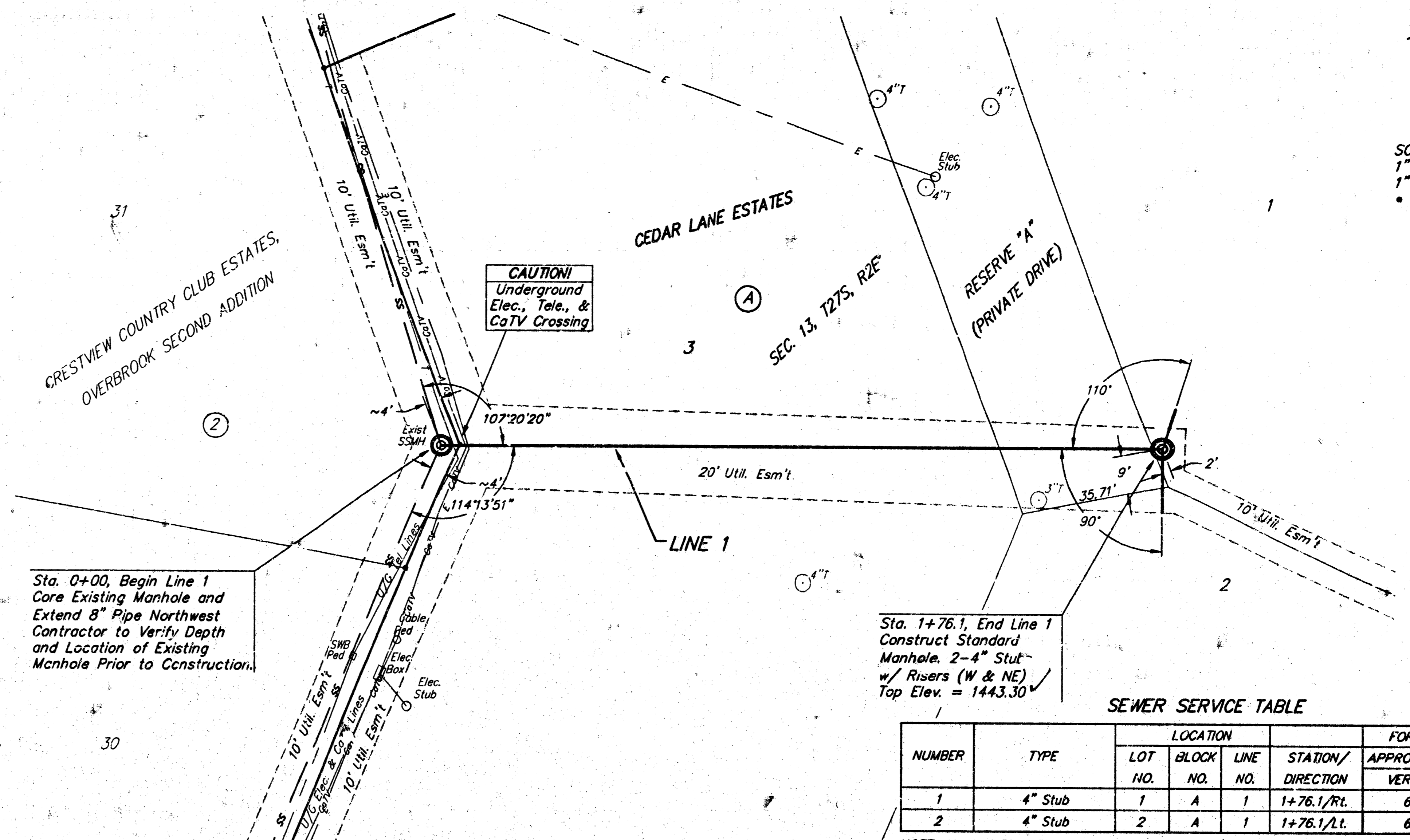
SANITARY SEWER IMPROVEMENTS
to Serve
LOTS 1,2, &3 BLOCK A
CEDAR LANE ESTATES
Private Project Number: 1540 PPS (607861)
CITY OF WICHITA, KANSAS
Jim Armour, P.E. Acting City Engineer
April 2005

Benchmark:	Legal Desc.	Index
"□" Cut Top of Curb Adjacent to Northwest Corner of Lot 33, Block 2, Crestview Country Club Estates, Overbrook Second Addition, Sedgwick County, Kansas. Elev. = 1338.98 MSL.	Lots 1,2, & 3 Block A, Cedar Lane Estates, Sedgwick County, Kansas.	Cover/Plan/Profile Sheet 1 Standard Manhole Detail 2 Ring & Cover Detail 3 Erosion Control BMP's 4 Copy of Plat 5

Nowak Construction Co, Inc. - Contractor
Baughman Co, Inc. - Inspector
Released 6/7/05
Per Plans - Stubs
.pdf by JDL 6/7/05

General Notes

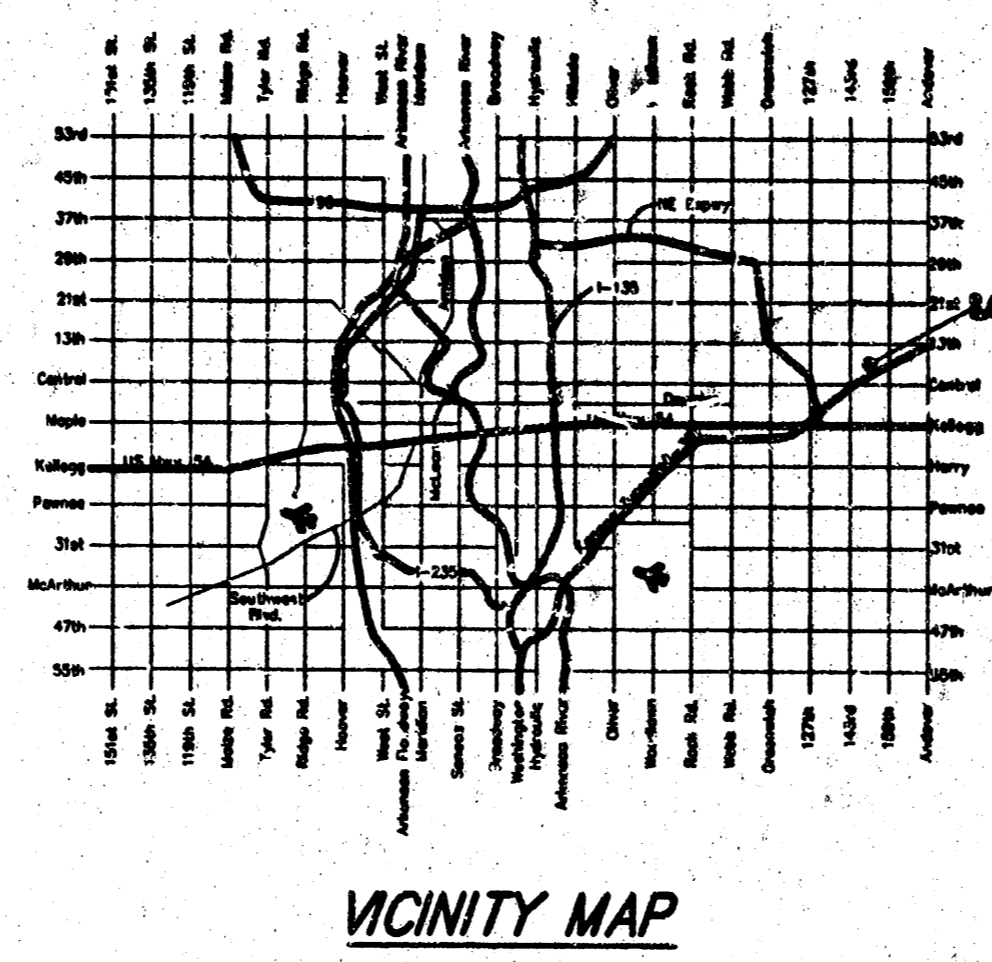
- Contractor will be required to provide notice to utility companies a minimum of forty-eight (48) hours prior to any excavation, as follows:
Kansas One-Call 687-2470
The Contractor must notify the following in case of an emergency:
Cox Communications 262-4270
Kansas Gas Service Company 1-888-482-4950
Westar Energy (Electric) 383-8650
Aquila Energy (Gas) 1-800-303-0357
SBC (Telephone) 1-800-286-8313
City of Wichita Water Dept. (Water) 262-6000
City of Wichita Sewer Maint. (SS) 262-6000
City of Wichita Storm Sewer Maint. 268-4090
City of Wichita Traffic Maint. 268-4034
- Utility service lines, poles, valve boxes, meters, et cetera are to be adjusted as necessary by others prior to construction unless the plans specifically call for their adjustment by the Contractor or unless the plans specifically identify utility to be adjusted by its owner during construction. Existing utilities are their location, as shown on the plans represent the best information obtainable for design and shall be field verified. The contractor will be required to work around existing utilities within the right-of-way which do not conflict with proposed construction.
- Contractor shall not start work on the project until the project inspector is assigned to the project and is present on the site. Contractor shall not start on the project until all necessary bonds and permits have been obtained. Bonds may include but are not limited to Statutory, Performance & Maintenance for areas in public right-of-way and easement. For projects within the City of Wichita contact Tom Mason (268-4574). Any work done without inspection will be required to be uncovered for inspection.
- Rubble from the removal of miscellaneous structures and excess excavation which is to be wasted shall be disposed of on sites to be provided by the Contractor. These sites shall be approved by the Engineer as to suitability, appearance and site location. Locations that, in the opinion of the Engineer, will leave an unsightly appearance will not be approved. All disposal sites must be approved by the Kansas Department of Health and Environment. Material either stockpiled or disposed of in a flood plain would require a Kansas State Board of Agriculture permit. Any material dumped in waters of the United States or wetlands is subject to U.S. Corps. of Engineers
- Trees and shrubs in public right-of-way which are in direct contact with proposed new construction shall be removed by the Contractor with the Engineer's approval. Trees and shrubs which are not in direct contact with proposed new construction shall be saved and protected from damage.
- The Contractor shall give all property owners and/or tenants of developed property abutting the construction of this project a minimum of ten (10) days advance notice prior to start of construction.
- The Contractor shall be responsible for preserving property irons. The Contractor will be required to re-establish any property irons which are damaged or destroyed by his construction operations. Such irons shall be reestablished by a licensed land surveyor in accordance with state laws.
- When connecting to existing manhole or stub, the contractor shall reshape manhole bottom or adjust the existing stub's alignment or elevation as necessary. Cost shall be subsidiary to project.
- The Contractor shall be responsible for maintaining a continuous flow of sewage through construction. Contractor's proposed method for maintaining sewage flow shall be approved by the Engineer. Cost of maintaining flow of sewage through construction will not be paid for directly and this cost shall be considered as subsidiary to the other pay items of work.
- All sanitary sewers shall be installed in accordance with the most recent edition of City of Wichita, Kansas Standard Specifications for the Construction of City Projects.
- Contractor shall replace existing grass in this area in kind as necessary to restore areas disturbed by construction to original condition. Cost to be Included in Bid Item "Site Clearing & Restoration"



SEWER SERVICE TABLE

NUMBER	TYPE	LOCATION			FOR INFORMATION ONLY		
		LOT NO.	BLOCK NO.	LINE NO.	STATION/DIRECTION	APPROXIMATE LENGTH	4" PIPE HORIZONTAL
1	4" Stub	1	A	1	1+76.1/RT.	6.5'	10'
2	4" Stub	2	A	1	1+76.1/L.	6.5'	15'

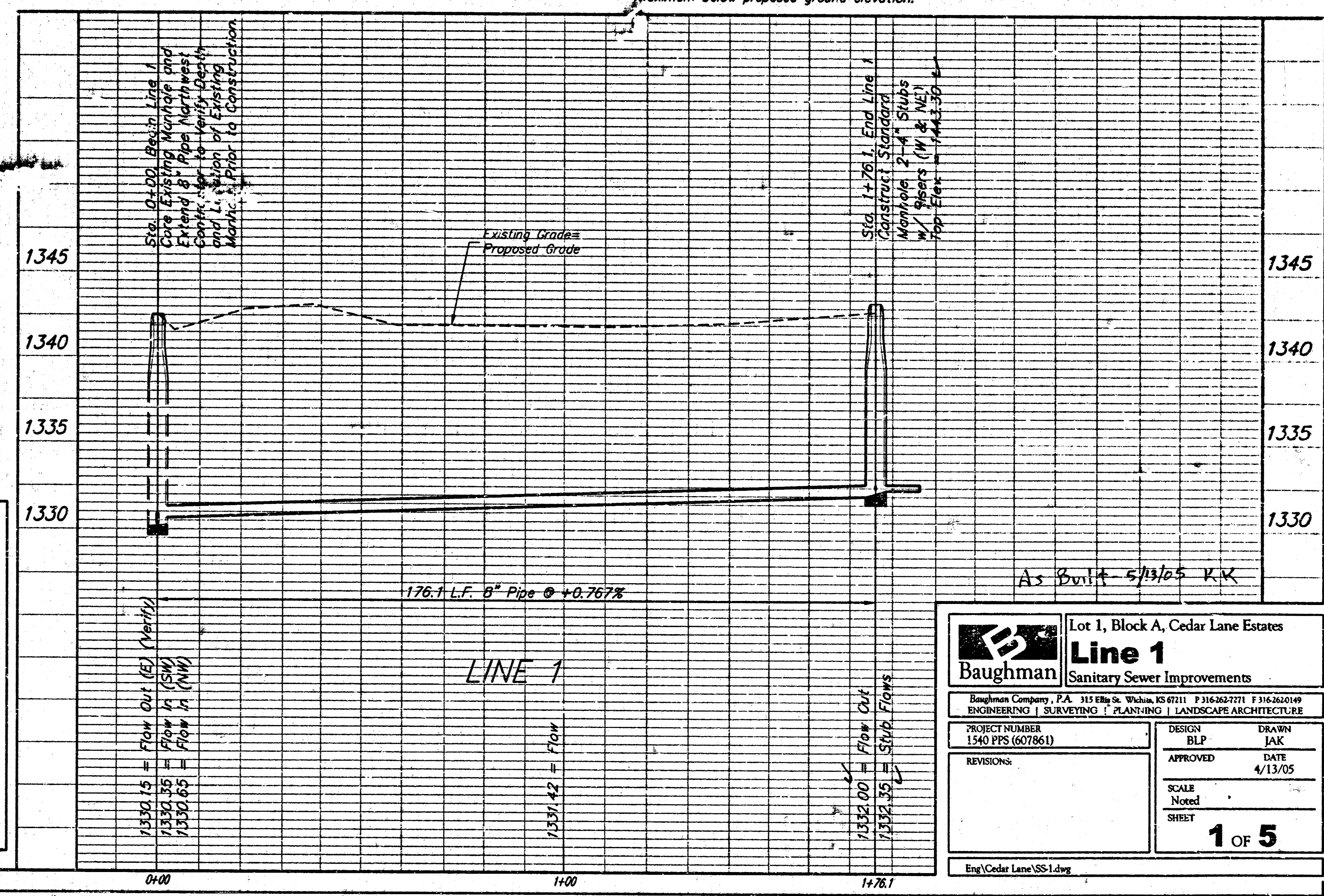
NOTE: Vertical Riser Pipe shall be extended to 2' minimum above ground water elevation and 4' maximum below proposed ground elevation.



APPROVED AS NOTED
BY CITY ENGINEER OF WICHITA
Sanitary Sewers URH 4/6/05

NOTE TO CONTRACTORS

Installation, inspection and testing for this project is to be provided by a Licensed Consulting Engineering Firm under contract with the Owner/Developer. Said inspection to be in accordance with the City of Wichita standard construction engineering practices and certified by a Licensed Professional Engineer. No work shall be performed in dedicated easements or public right-of-way by the Contractor without such inspection nor shall any work be commenced without written authorization by the City Engineer. All Construction and Materials shall comply with the City of Wichita Specifications and Standards (on file and available in the City Engineer's Office).



Line 1
Sanitary Sewer Improvements

Lot 1, Block A, Cedar Lane Estates

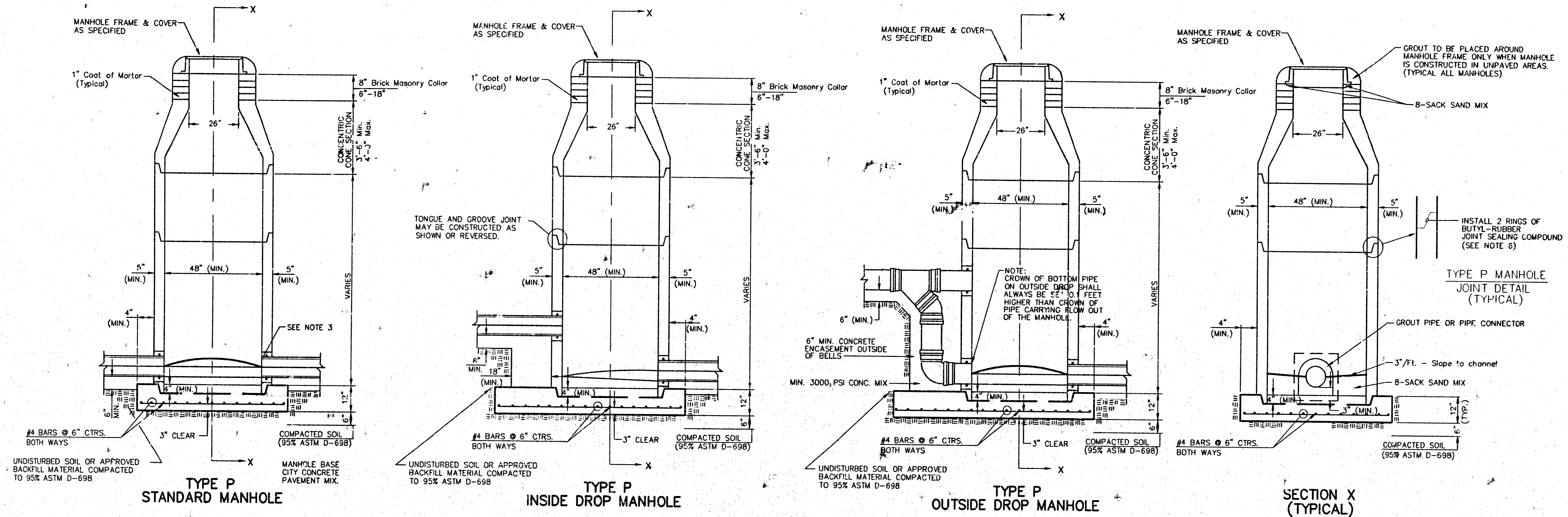
Baughman ENGINEERING, SURVEYING, PLANNING & LANDSCAPE ARCHITECTURE

Project Number: 1540 PPS (607861)
Design: BLP
Approved: JAK
Date: 4/13/05

Scale: Noted
Sheet: **1 OF 5**

Eng\Cedar Lane\SS-1.dwg

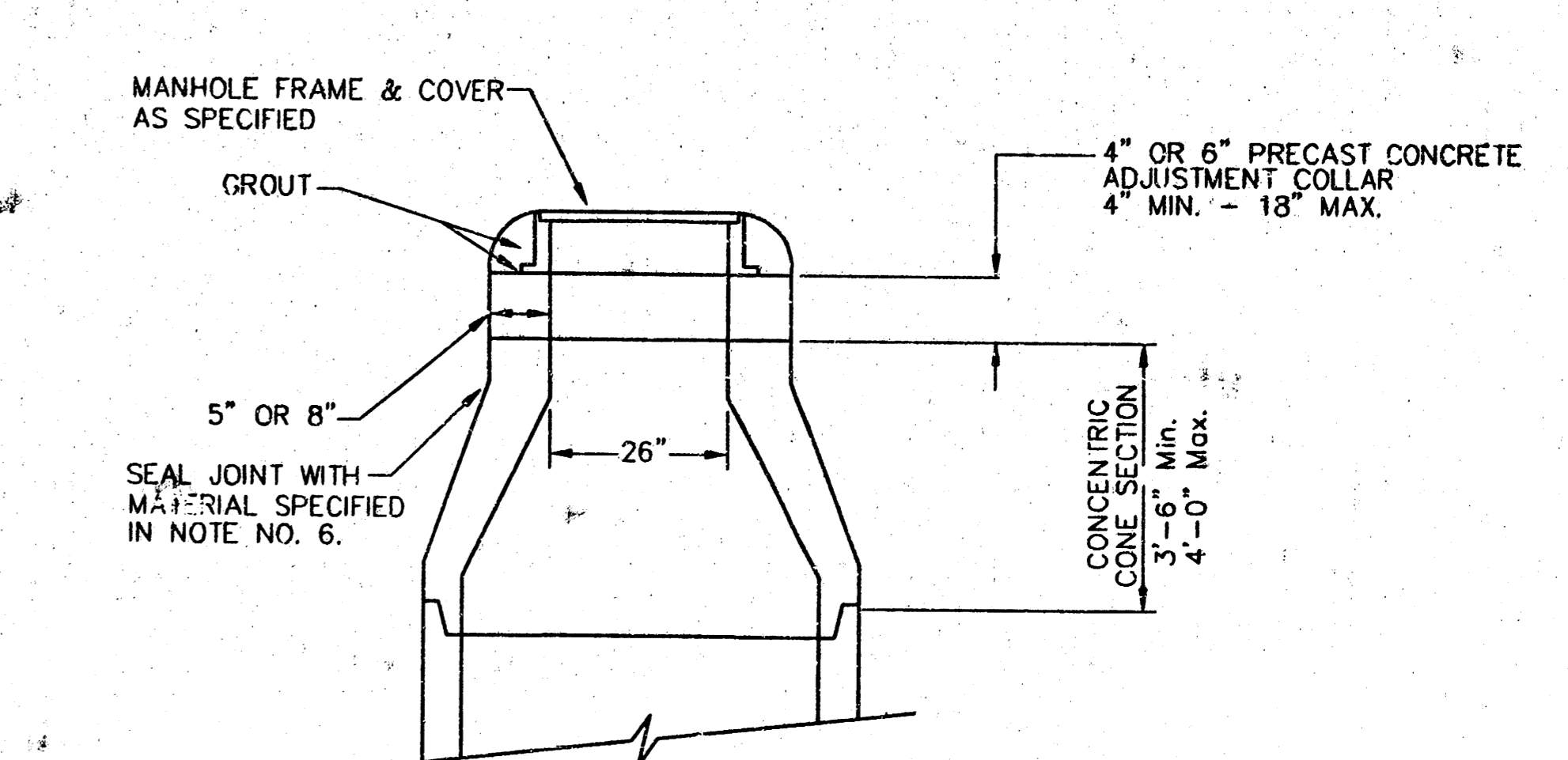
SEWER APPURTENANCES DETAILS



- GENERAL NOTES**
PRECAST MANHOLE NOTES
- ALL PRECAST CONCRETE MANHOLE SECTIONS SHALL CONFORM TO THE LATEST REVISIONS OF A.S.T.M. C478 AS MODIFIED BY THE SPECIFICATIONS.
 - NON-SHRINK GROUT SHALL BE NON-METALLIC TYPE.
 - APPROVED FLEXIBLE WATERSTOP GASKETS SHALL BE INSTALLED TO JOIN THE SEWER TO THE MANHOLE WALL WHEN A.B.S. COMPOSITE PIPE OR P.V.C. PIPE IS USED. FOR OTHER TYPES OF PIPE THE SEWER PIPE SHALL BE GROUTED IN PLACE WITH NON-SHRINK GROUT. THE SEWER PIPE SHALL BE SUPPORTED WITH CONCRETE ENCASEMENT A MINIMUM OF 3 FEET FROM THE MANHOLE WALL AND TO THE FIRST JOINT FOR V.C.P. SUCH THAT THE JOINT REMAINS FLEXIBLE.
 - ALL INSIDE SURFACES OF THE CONCRETE MANHOLE WHICH WOULD BE EXPOSED TO SEWER GAS SHALL BE COATED WITH 2 COATS TNE MEC SERIES 66 HI-BUILD EPOXYLINE, DRY THICKNESS OF 8 MILS (MIN.).
 - EXTERIOR MANHOLE WALLS SHALL BE COATED WITH 1 COAT MOBILARMA 633 BITUMINOUS COATING.
 - JOINT SEALING COMPOUND SHALL BE KENT SEAL NO. 2 OR APPROVED EQUAL.
 - PRECAST MANHOLES SHALL BE SET AT LEAST 4 INCHES INTO THE MANHOLE BASE.
 - TOP OF MANHOLE FLOOR SLAB SHALL BE AT LEAST 3 INCHES BELOW THE FLOW LINE OF THE OUTLET PIPE TO INSURE SUFFICIENT MINIMUM THICKNESS OF SHAPED INVERT.
 - LIFTING HOLES SHALL BE FILLED WITH NON-SHRINK GROUT AND THE INTERIOR SURFACE COATED AS SPECIFIED.
 - MORTAR USED IN MASONRY CONSTRUCTION SHALL CONTAIN 8 SACKS OF CEMENT PER CUBIC YARD. CONCRETE USED IN MANHOLE BASES SHALL CONFORM TO THE REQUIREMENTS OF CONCRETE FOR CONCRETE PAVEMENT CONSTRUCTION AS SPECIFIED IN THE CITY STANDARD PAVING SPECIFICATIONS USING CITY CONCRETE PAVEMENT MIX WITHOUT AIR ENTRAINING ADMIXTURE. MORTAR SHALL BE PLACED AROUND THE MANHOLE RING AS SHOWN ON THE DRAWINGS WHEN MANHOLES ARE CONSTRUCTED IN UNPAVED AREAS. MANHOLES CONSTRUCTED WHERE PIPE SIZES ARE SMALLER THAN 24" SHALL HAVE AN INSIDE DIAMETER OF 48" MANHOLES CONSTRUCTED WHERE PIPE SIZES ARE 24" OR LARGER SHALL HAVE AN INSIDE DIAMETER OF 5'. COMPLETED MANHOLE SHALL BE WITHOUT LEAKS AND WATER TIGHT.

- REINFORCING STEEL SHALL BE INSTALLED IN THE MANHOLE BASES AND SHALL CONSIST OF NO. 4 BARS PLACED ON 6" CENTERS IN BOTH DIRECTIONS. THE MANHOLE BASE REINFORCEMENT SHALL BE PLACED AT LEAST 3" ABOVE THE BOTTOM OF THE MANHOLE BASE. ALL COSTS FOR FURNISHING AND INSTALLING REINFORCING STEEL SHALL BE INCLUDED IN THE UNIT PRICE BID FOR THE MANHOLE.
- OPENINGS SHALL BE CUT INTO THE MANHOLE WALL WHEN OUTSIDE DROPS ARE CONSTRUCTED ON EXISTING MANHOLES. SUCH OPENINGS CUT INTO EXISTING MANHOLES SHALL BE AS SMALL AS PRACTICAL TO FACILITATE INSTALLING AND GROUTING THE NEW PIPE IN PLACE. WATERSTOP GASKETS SHALL BE USED WITH P.V.C. AND A.B.S. COMPOSITE PIPE. THE NEW PIPE SHALL BE GROUTED INTO THE OPENING USING AN APPROVED NON-SHRINK GROUT FOR THE FULL MANHOLE WALL THICKNESS. THE EXTERIOR OF THE COMPLETED CONNECTION SHALL BE SEALED WITH AN APPROVED BITUMINOUS COATING SUCH THAT THE CONNECTION WILL BE WATER TIGHT. FLOOR OF MANHOLE SHALL BE MODIFIED TO FORM NEW FLOW CHANNEL FOR THE NEW CONNECTION AS INDICATED BY THE DRAWING. THIS WORK, INCLUDING MODIFICATION OF MANHOLE FLOOR, SHALL BE PAID FOR AT THE UNIT PRICE BID FOR OUTSIDE DROP STACK CONSTRUCTED ON EXISTING MANHOLE.
- THE FLOORS OF ALL MANHOLES SHALL BE SHAPED WITH FLOW CHANNELS SUCH THAT THE MANHOLES WILL BE SELF CLEANING AND FREE OF AREAS WHERE SOLIDS COULD BE DEPOSITED AS SEWAGE FLOWS THROUGH THE MANHOLE FROM ALL INLET PIPES TO THE OUTLET PIPE. FLOW CHANNELS SHALL BE FORMED TO MATCH THE BOTTOM HALVES OF THE INFLOWING PIPES AND THE OUTFLOWING PIPE AS SHOWN BY THE DRAWINGS EXCEPT FOR INSIDE DROP MANHOLES. FLOW CHANNELS FOR INSIDE DROP MANHOLES SHALL BE CONSTRUCTED AS INDICATED BY THE DRAWING. MANHOLE FLOORS SHALL HAVE SLOPES OF 3 INCHES PER FOOT IN THE AREAS OUTSIDE OF THE FLOW CHANNELS SLOPED TOWARD THE FLOW CHANNELS. PIPES LAID THROUGH MANHOLES SHALL HAVE THE TOP HALF REMOVED TO NEAT LINES FOR THE FULL INSIDE DIAMETER OF THE MANHOLE. MANHOLE FLOORS SHALL THEN BE SHAPED AROUND THE BOTTOM HALF OF THE PIPE WHICH FORMS THE FLOW CHANNEL.
- PIPES INSTALLED WITHIN THE EXCAVATION MADE FOR THE MANHOLE SHALL BE CRADLED WITH CONCRETE TO THE LIMITS OF THE MANHOLE EXCAVATION. WHEN CLAY PIPE IS USED, THE CRADLE SHALL EXTEND TO THE FIRST JOINT OUTSIDE THE MANHOLE. THE CRADLE SHALL BE TERMINATED AT THE CLAY PIPE JOINT IN A MANNER WHICH WILL MAINTAIN THE FLEXIBILITY OF THE JOINT. COST OF CRADLE WITHIN MANHOLE EXCAVATION OR TO CLAY PIPE JOINTS ADJACENT TO MANHOLE SHALL BE INCLUDED IN THE UNIT PRICE BID FOR THE MANHOLE.

- MANHOLE COVER CASTINGS AND MANHOLE FRAME CASTINGS SHALL CONFORM TO THE REQUIREMENTS AS INDICATED IN THE STANDARD SPECIFICATIONS AND AS SHOWN IN THE STANDARD DETAIL DRAWING.
- THE VERTICAL DROP IN INSIDE DROP MANHOLES SHALL NOT EXCEED 2' FOR INFLOWING PIPES SIZED 12" OR SMALLER AND 2' FOR INFLOWING PIPES LARGER THAN 12". THE CROWNS OF INFLOWING PIPES SHALL NEVER BE SET LOWER THAN THE CROWN OF THE OUTFLOWING PIPE.
- STANDARD MANHOLES AND STANDARD INSIDE DROP MANHOLES SHALL BE BID AS STANDARD MANHOLES FOR THE TYPE AND DIAMETER INDICATED. OUTSIDE DROP MANHOLES SHALL BE BID AS STANDARD OUTSIDE DROP MANHOLES FOR THE TYPE AND DIAMETER INDICATED. ALL MANHOLE DIAMETERS WILL BE 4' UNLESS INDICATED OTHERWISE.
- A BRICK MASONRY COLLAR SHALL BE INSTALLED BETWEEN THE CAST IRON FRAME AND THE CONCENTRIC CONE. THE COLLAR WILL HAVE 8" WALLS AND A VERTICAL HEIGHT OF 6" MINIMUM AND 18" MAXIMUM. A 1" COAT OF MORTAR WILL BE PLASTERED ON THE OUTSIDE OF THE COLLAR. THE USE OF PRE-CAST CONCRETE SPACERS FOR MANHOLE TOP ADJUSTMENT IS ALSO ALLOWED.

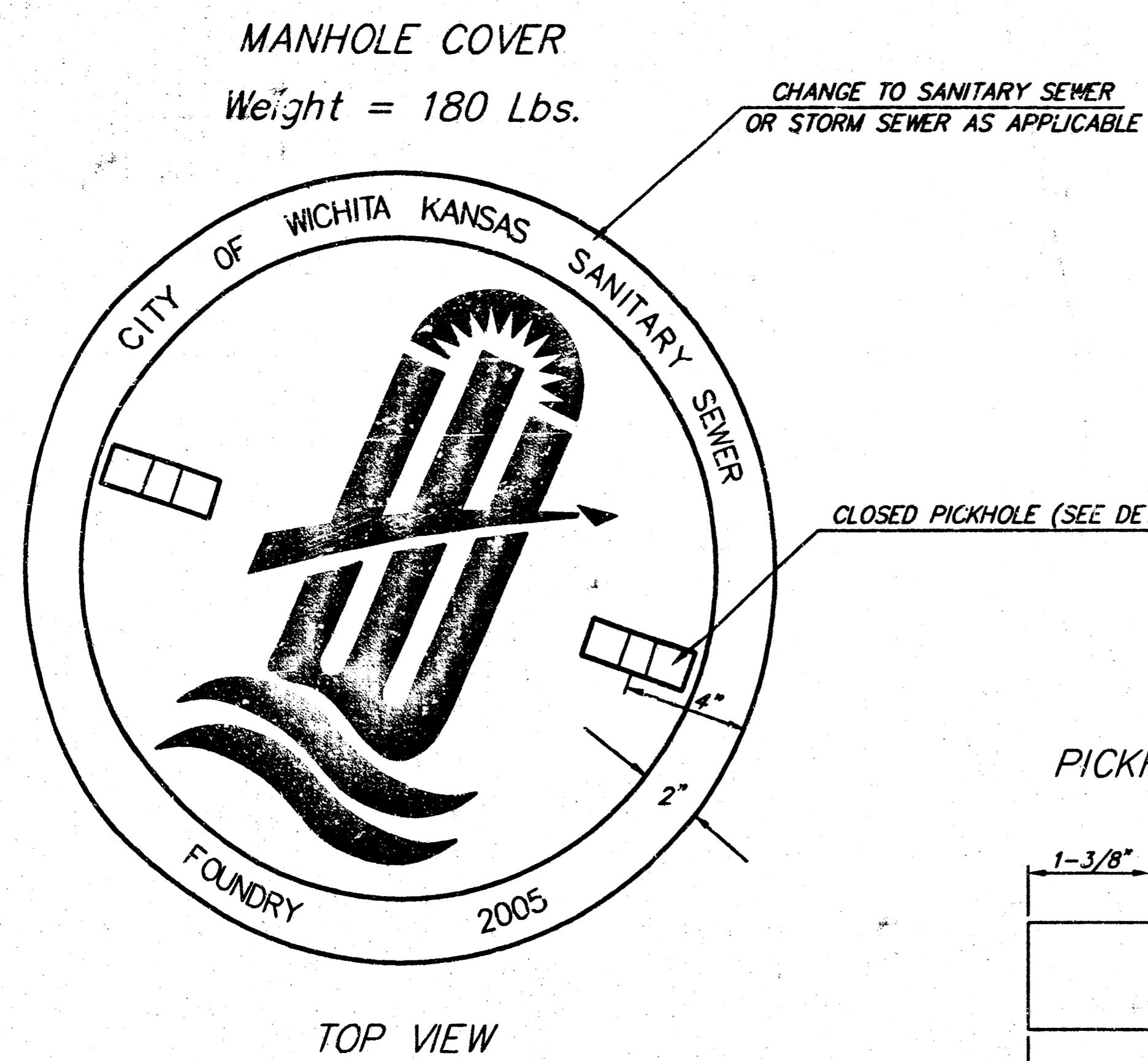


ALTERNATE CONSTRUCTION IN UNPAVED AREAS

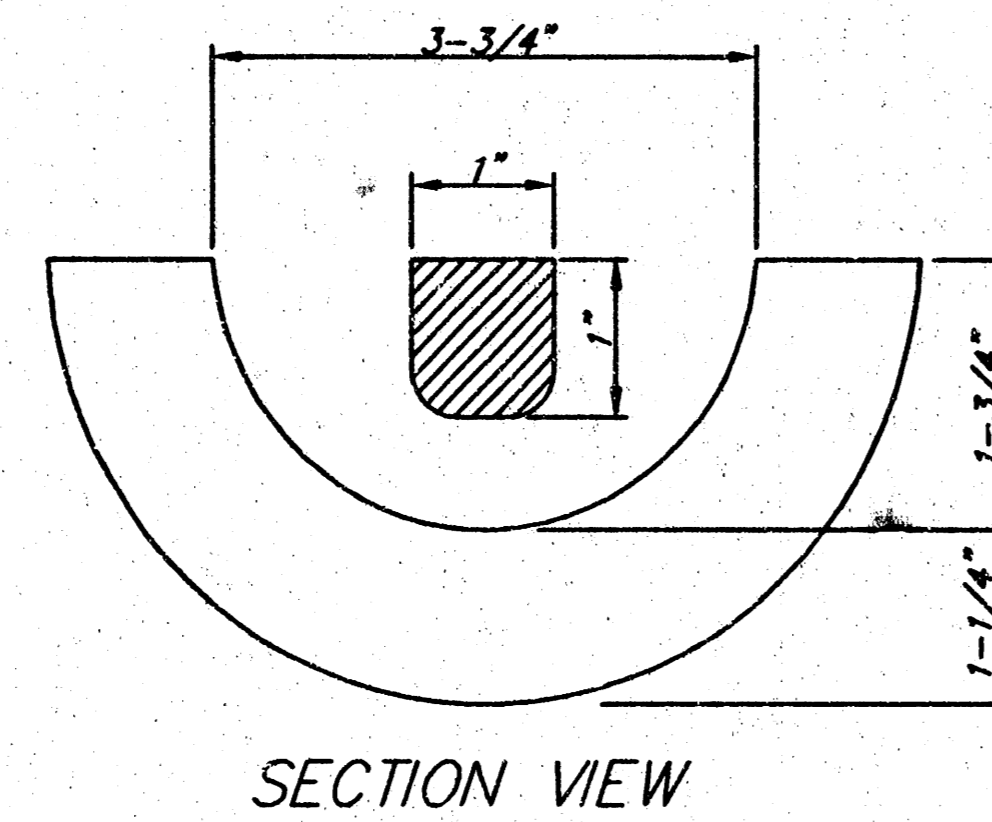
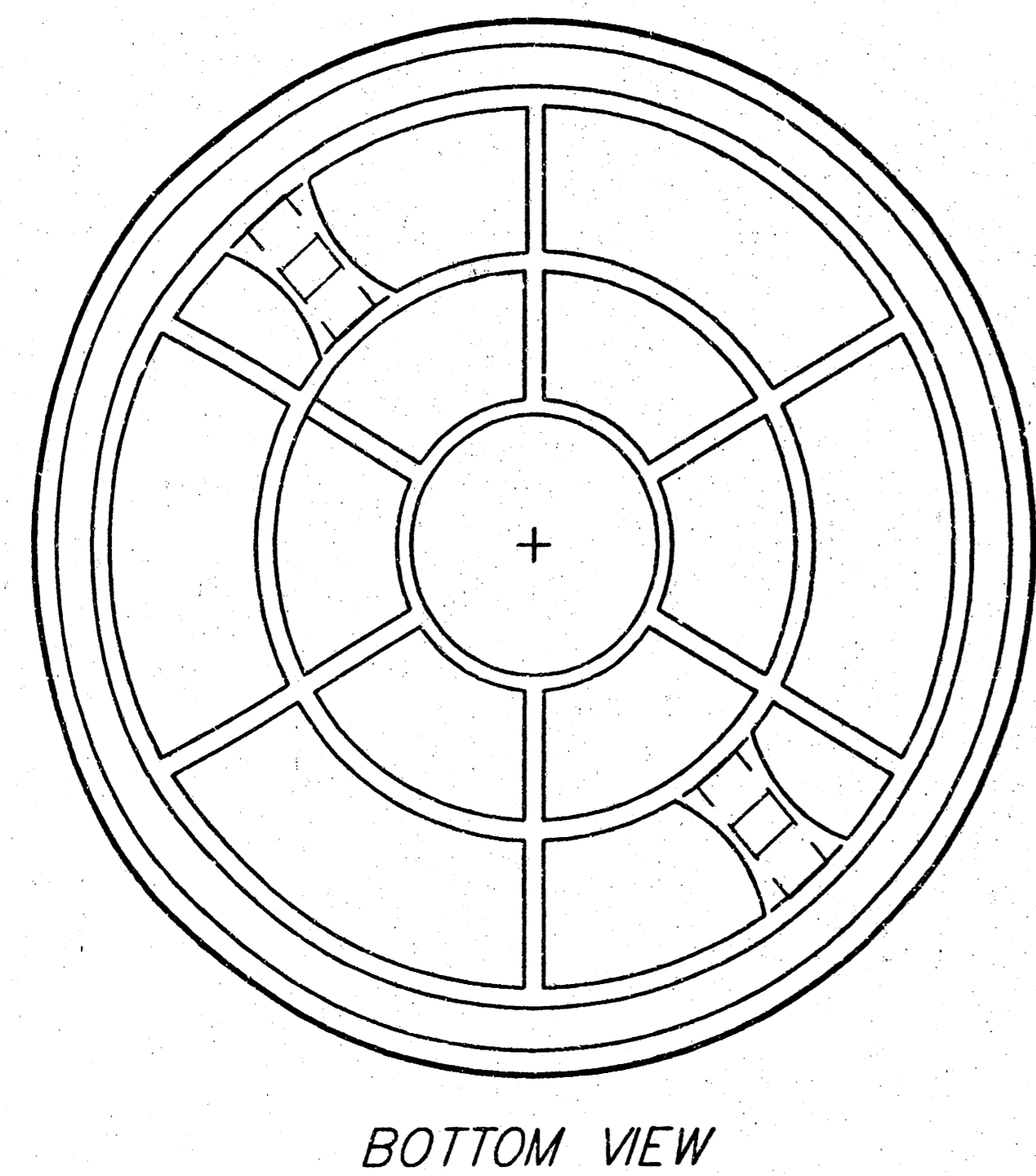
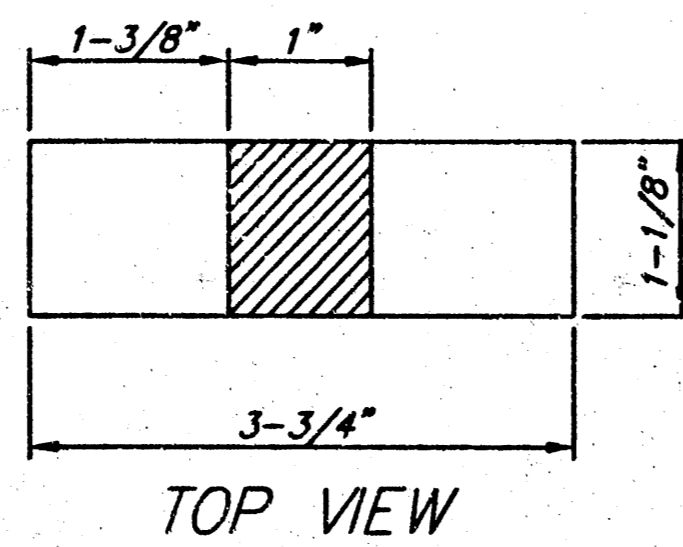
		CITY OF WICHITA, KANSAS	
		STANDARD MANHOLE DETAILS SEWER APPURTENANCES DETAILS	
Baughman Company, P.A. 315 Ellis St., Wichita, KS 67211 P.316.262.7271 F.316.262.0149 ENGINEERING SURVEYING PLANNING LANDSCAPE ARCHITECTURE		DESIGN STAFF	DRAWN STAFF
PROJECT NUMBER 1540 PFS (607861)		APPROVED	DATE 4/13/05
REVISIONS		SCALE NONE	SHEET
		2 OF 5	
L:\Details\Sewer\Push.dwg			

STANDARD AND LIGHT WEIGHT MANHOLE FRAME AND COVER DETAIL

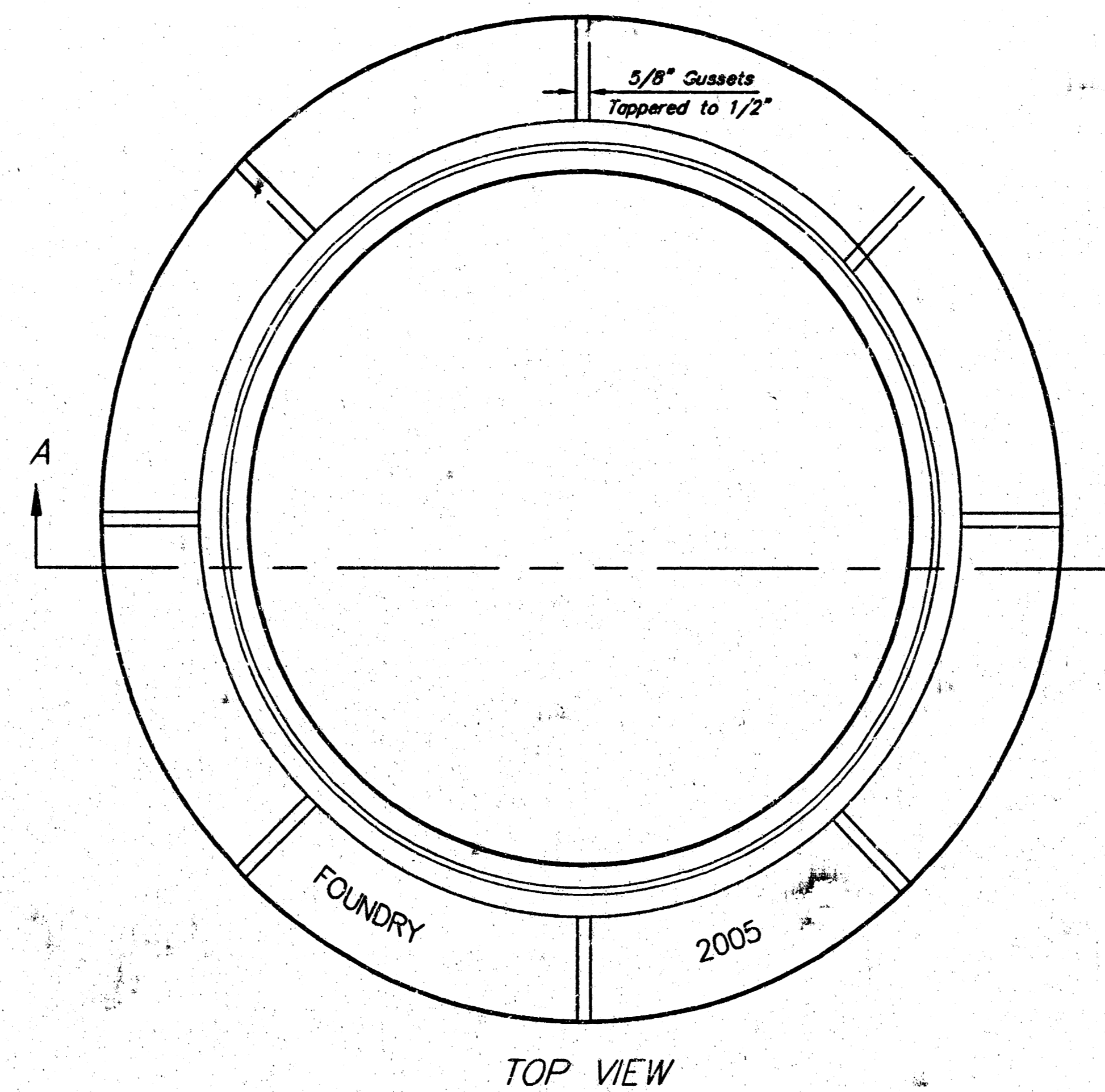
ADOPTED AS STANDARD DESIGN BY
CITY OF WICHITA, KANSAS



PICKHOLE DETAIL

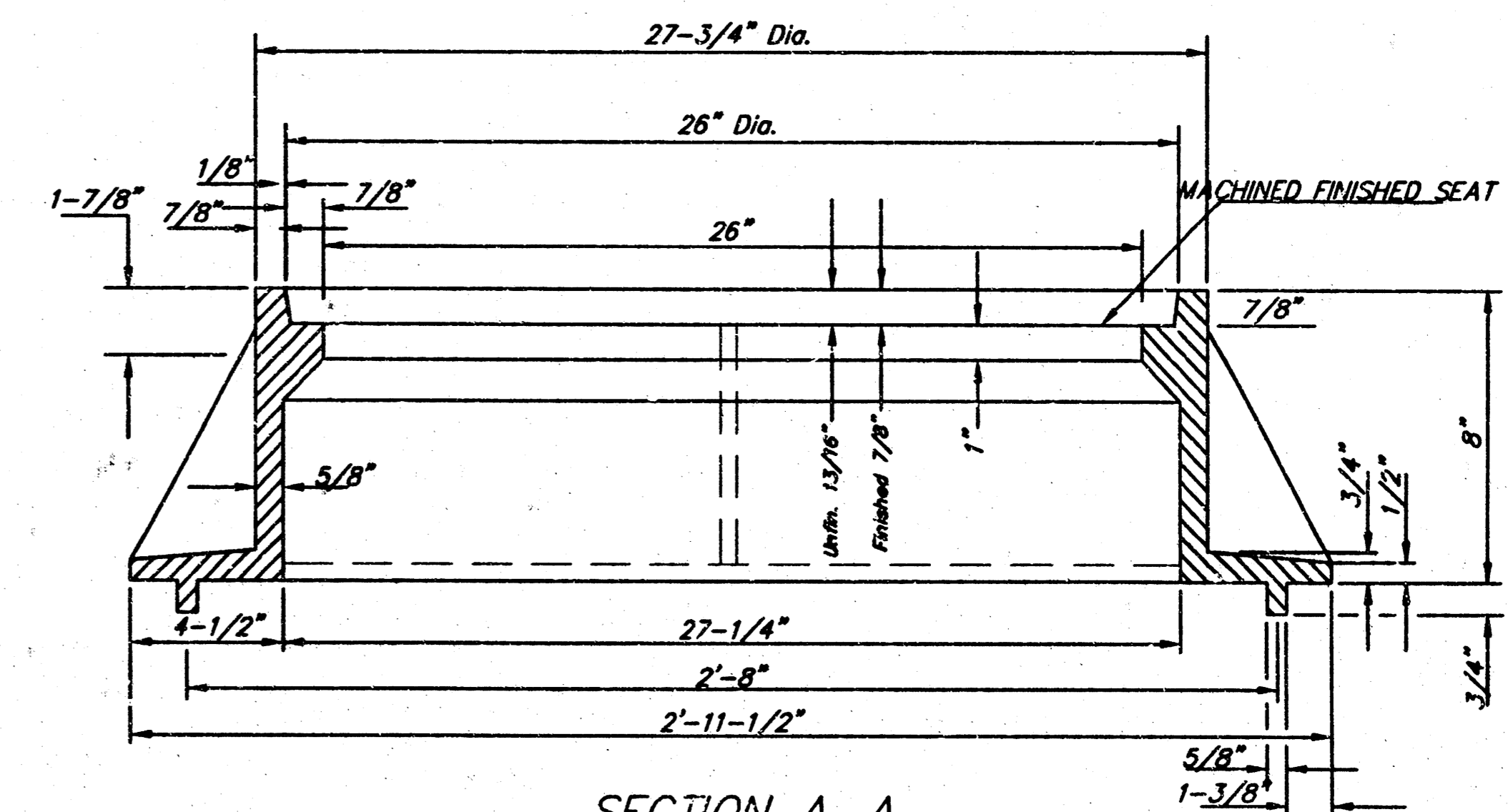
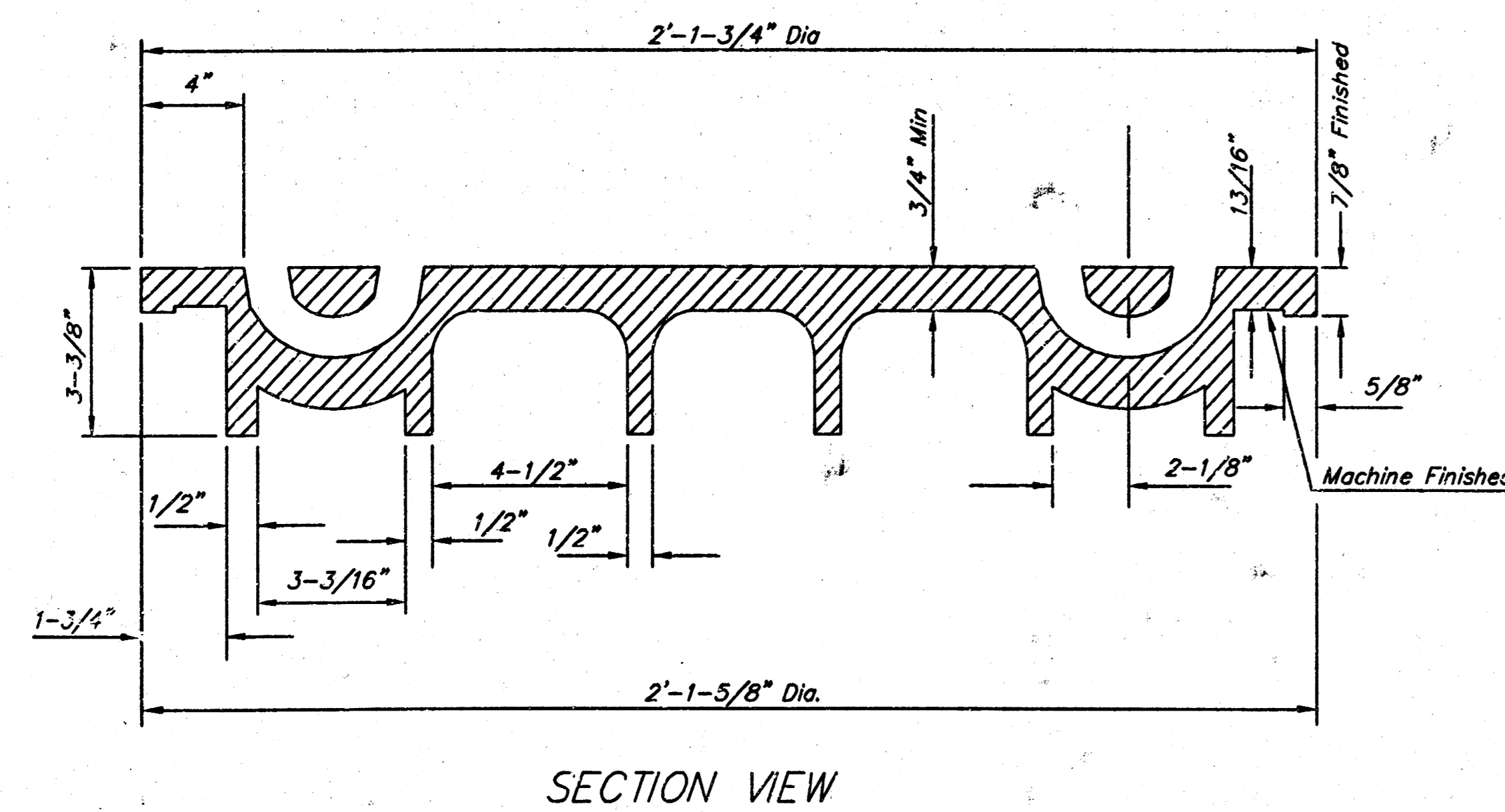


LIGHT WEIGHT
MANHOLE FRAME
Weight = 161 Lbs.

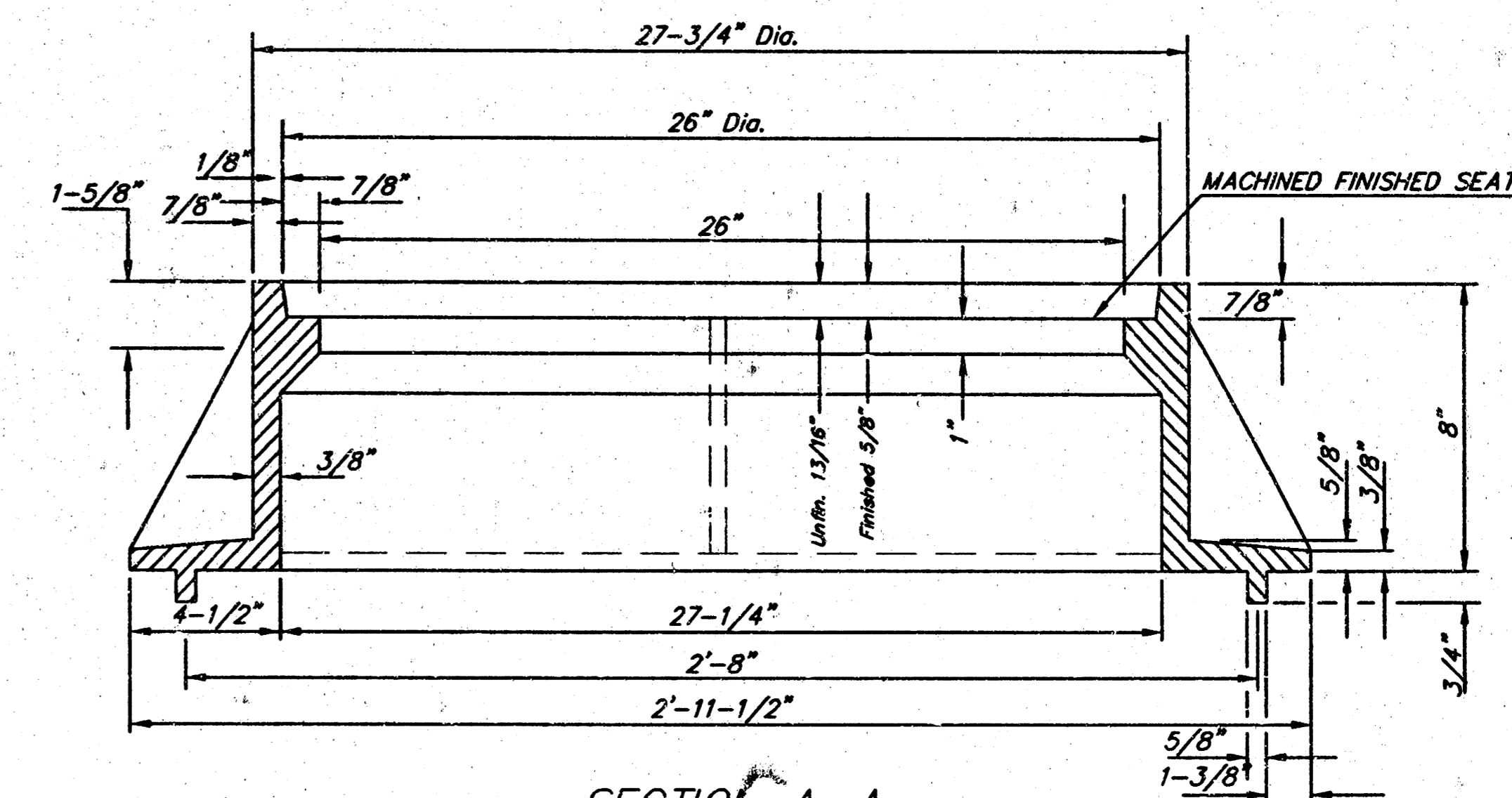


GENERAL NOTES

- MANHOLE CASTINGS SHALL BE MANUFACTURED USING GOOD QUALITY GRAY IRON CONFORMING TO CLASS 30 2F A.S.T.M. DESIGNATION A-48. DIMENSIONS AND WEIGHTS SHOWN ON THE DETAILED DRAWINGS SHALL BE CONSIDERED AS MINIMUM REQUIREMENTS AND ANY DEVIATIONS FROM THE DIMENSIONS SHOWN MUST BE SPECIFICALLY APPROVED. THE FINISHED CASTINGS SHALL BE OF UNIFORM QUALITY, FREE FROM BLOWHOLES, POROSITY, HARD SPOTS, SHRINKAGE DISTORTIONS OR OTHER DEFECTS.
- LIGHT WEIGHT MANHOLE CASTINGS SHALL WEIGH A MINIMUM OF 160 POUNDS ON THE SOLID COVER AND 161 POUNDS ON THE MANHOLE RING. THIS IS A TOTAL OF 341 POUNDS ON A RING AND COVER SET. CASTINGS WEIGHING LESS THAN THE MINIMUM SPECIFICATIONS WILL NOT BE ACCEPTED.
- STANDARD MANHOLE CASTINGS SHALL WEIGH A MINIMUM OF 180 POUNDS ON THE SOLID COVER AND 430 POUNDS ON THE MANHOLE RING. THIS IS A TOTAL OF 430 POUNDS ON A RING AND COVER SET. CASTINGS WEIGHING LESS THAN THE MINIMUM SPECIFICATIONS WILL NOT BE ACCEPTED.
- MANHOLE CASTINGS SHALL BE MANUFACTURED SUCH THAT A COVER MANUFACTURED BY ANY ONE FOUNDRY WILL FIT INTERCHANGEABLY INTO A FRAME MANUFACTURED BY ANOTHER FOUNDRY AND STILL MEET ALLOWABLE CLEARANCES AND NON-ROCKING REQUIREMENTS. THIS WILL REQUIRE MANUFACTURING OF THE MATCHING FACES ON THE COVER AND THE FRAME TO CLOSE TOLERANCES.
- THE OUTSIDE CIRCUMFERENCE OF THE VERTICAL FACE OF THE COVER AND THE INSIDE CIRCUMFERENCE OF THE VERTICAL FACE IN THE FRAME RECESS SHALL BE MANUFACTURED TO TOLERANCES SUCH THAT THE CLEARANCE BETWEEN THE COVER AND FRAME WILL NOT EXCEED 1/8" AT ANY POINT AROUND THE CIRCUMFERENCE OF THE COVER. THE SEATING SURFACES BETWEEN THE COVER AND FRAME SHALL BE MACHINED SUCH THAT THESE SEATING SURFACES SHALL MAKE FULL CONTACT FOR THEIR FULL CIRCUMFERENCE TO PRECLUDE THE COVER FROM ROCKING IN THE FRAME.
- THE MANHOLE FRAME AND COVER SHALL BE MARKED WITH LETTERING INDICATING THE NAME OF THE MANUFACTURER AND THE YEAR WHEN THE COVER OR FRAME WAS CAST. THE COVER SHALL BE FURTHER IDENTIFIED WITH REGARDS TO OWNERSHIP USING LETTERS AT LEAST 1 INCH IN HEIGHT. THIS IDENTIFICATION SHALL BE "CITY OF WICHITA SANITARY SEWER" OR "CITY OF WICHITA STORM SEWER". THE TEXTURE OF THE TOP SURFACE OF THE COVER SHALL BE MANUFACTURED IN A CHECKERED PATTERN DESIGN AS INDICATED ON THE DRAWINGS. SMOOTH BLOCKOUTS SHALL BE UTILIZED TO HIGHLIGHT THE LETTERING ON THE COVER SURFACE. THE TOTAL AREA OF SMOOTH SURFACE BLOCKOUT SHALL NOT EXCEED THE AREA AS INDICATED ON THE DRAWING. POSITIONING OF SMOOTH BLOCKOUTS AND LETTERING MAY VARY FROM THAT SHOWN ON THE DETAILED DRAWING.
- MANHOLE FRAME WITHOUT MUDRING TO BE USED ONLY ON RECONSTRUCTION PROJECTS WHERE ADDITIONAL CLEARANCE IS NEEDED.



SECTION A-A
STANDARD
MANHOLE FRAME
Weight = 250 Lbs.

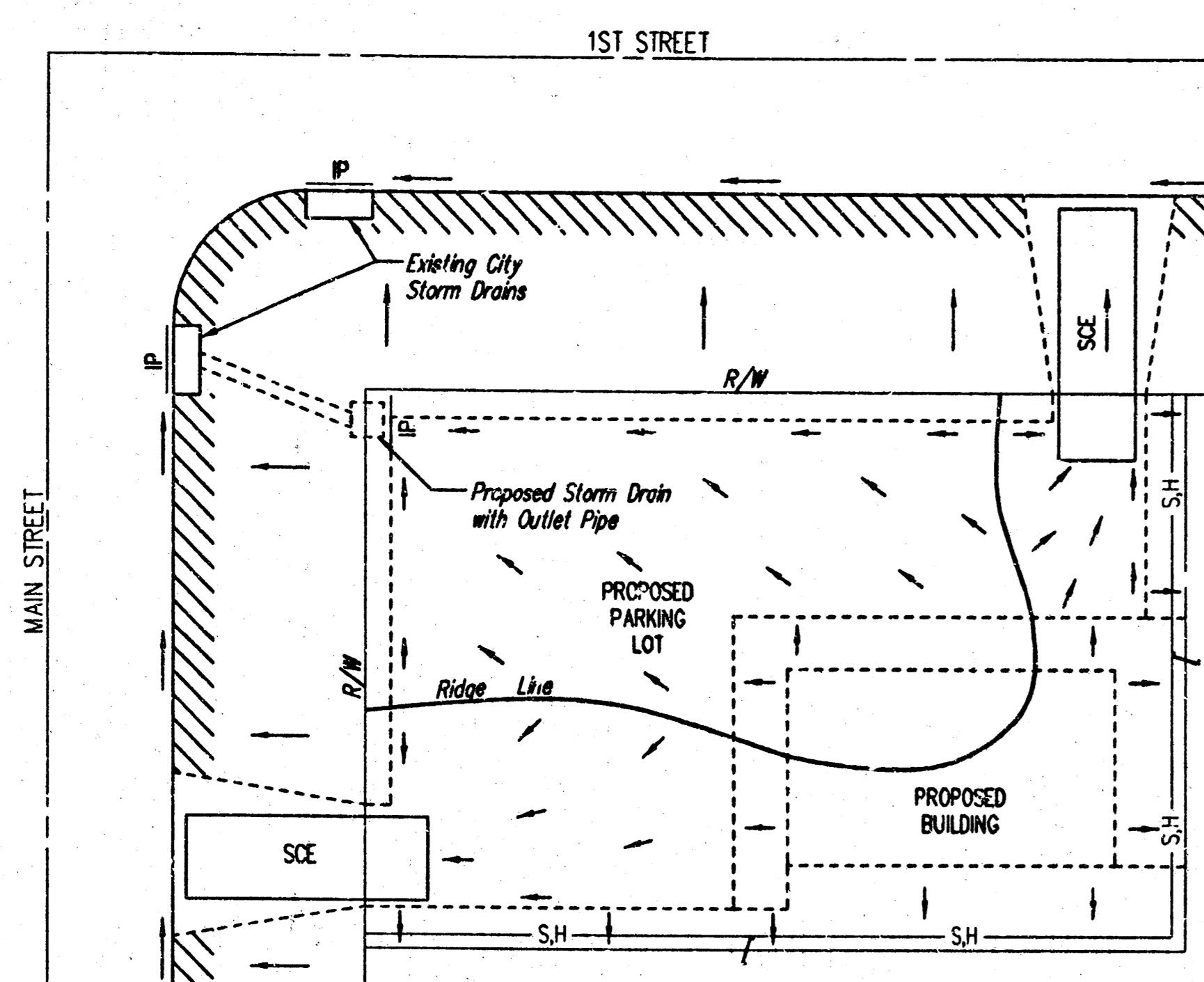


SECTION A-A
LIGHT WEIGHT
MANHOLE FRAME
Weight = 161 Lbs.



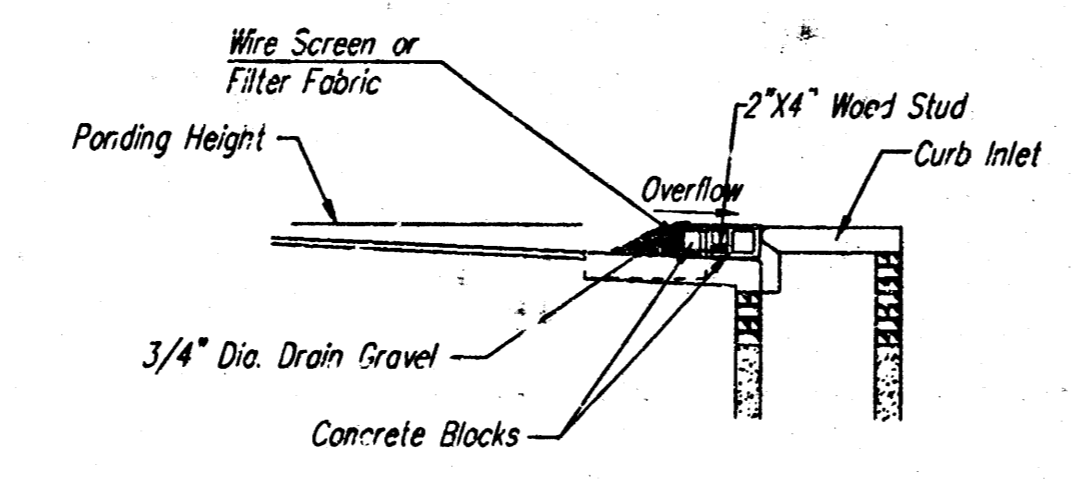
STANDARD & LIGHT WEIGHT MANHOLE FRAME AND COVER	
<small>CITY ENGINEER</small>	
JAMES L. ARMOUR, P.E. ACTING CITY ENGINEER	
PROJECT NUMBER 1540 PPS (607861)	DATE 4/15/05
CITY ENGINEER'S OFFICE CITY HALL - SEVENTH FLOOR 435 NORTH MAIN STREET WICHITA, KANSAS 67202-1620 (316) 268-4567 (316) 268-4114 FAX	DESIGN COW
	DRAWN COW
	SHEET 3 OF 5

REV. 3-13-02, MCG

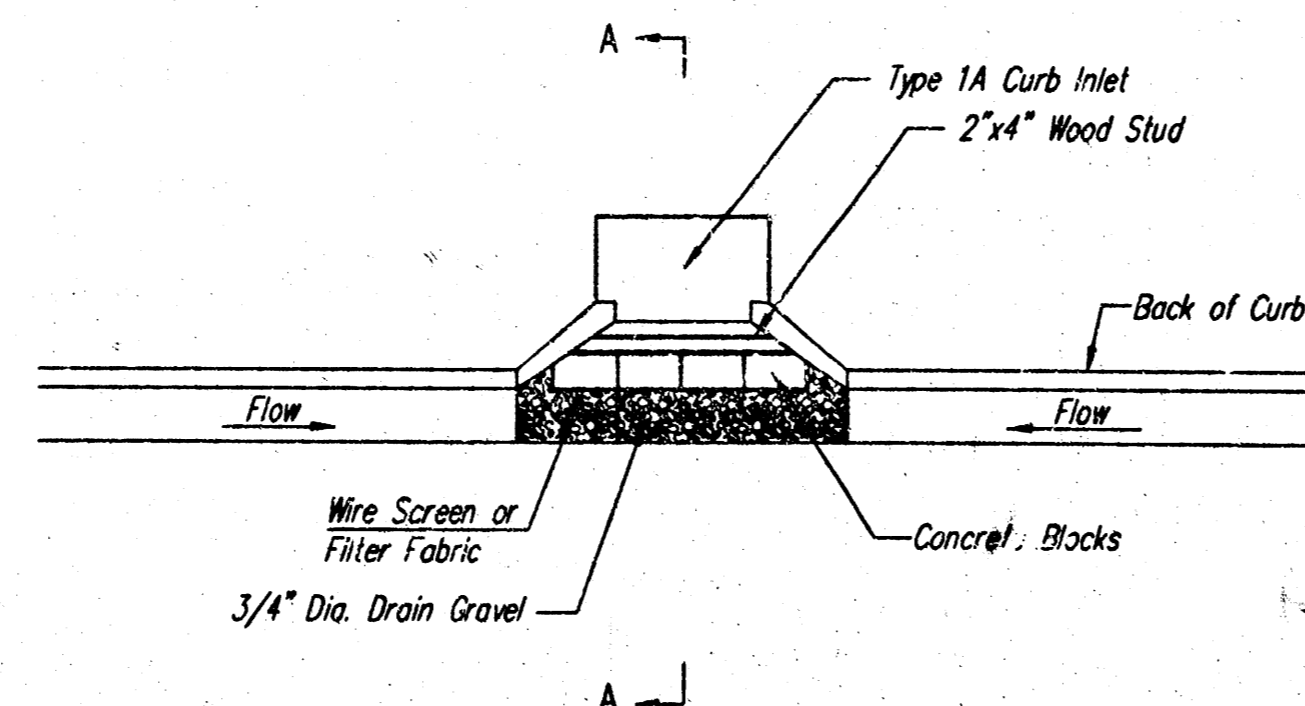


- LEGEND**
- Flow Direction
 - IP Inlet Protection - to be provided at all inlets subject to silt laden runoff.
 - S.H- Silt Fence or Hay Bale Barrier - to be installed along property lines where runoff from construction site can run onto other properties.
 - SCE Stabilized Construction Entrance - to be used at all locations where vehicles or equipment enter or exit property.
 - Back of Curb Protection - to be installed whenever curb is backfilled to less than 3 inches from top and disturbed earth exists adjacent thereto. (See City Standard Details).

- General Notes**
1. This standard detail sheet is a part of your building permit. The BMP's shown on this sheet are considered minimum standards. Whenever sediment enters the streets, storm sewers, ditches, or ponds, contractor will install additional BMP's, as needed, to correct the problem.
 2. Follow these general principles on all commercial building sides.
 3. The soil erosion BMP's shown herein must be in place at all times during construction until such time as the site is re-established with paving or grass.
 4. Failure to install, protect, and maintain BMP's are violations of Section 16.32 of the City Code and will subject the contractor to the penalties provided therein. Included with your permit is an orange "notice" sign that must be posted on-site in a conspicuous place at all times during construction. This sign is provided to assist you in the maintenance of BMP's.
 5. Back of Curb Protection: Can include hay bale, silt fence, or Curbex barrier, as shown on City BMP standard details. This BMP must remain in place until the area between the curb and right-of-way line has been permanently stabilized.
 6. The General Contractor is responsible for the installation and maintenance of all BMP's.
 7. Should the site abut a lake, BMP's will be installed to prevent sediment from entering the lake.
 8. Any mud inadvertently tracked onto any street will be cleaned up by the general contractor at the end of each day's work.



SECTION A-A



SECTION B-B

CURB INLET GRAVEL FILTERS
(INLET PROTECTION-RESIDENTIAL STREETS ONLY)

NOTE: Other types of curb inlet protection may be approved by the city so long as equal protection is provided.

A gravel inlet filter shall be installed at sump locations on residential streets. This type of protection is not to be used on arterial or collector streets at any time that it would pose an undue traffic hazard.

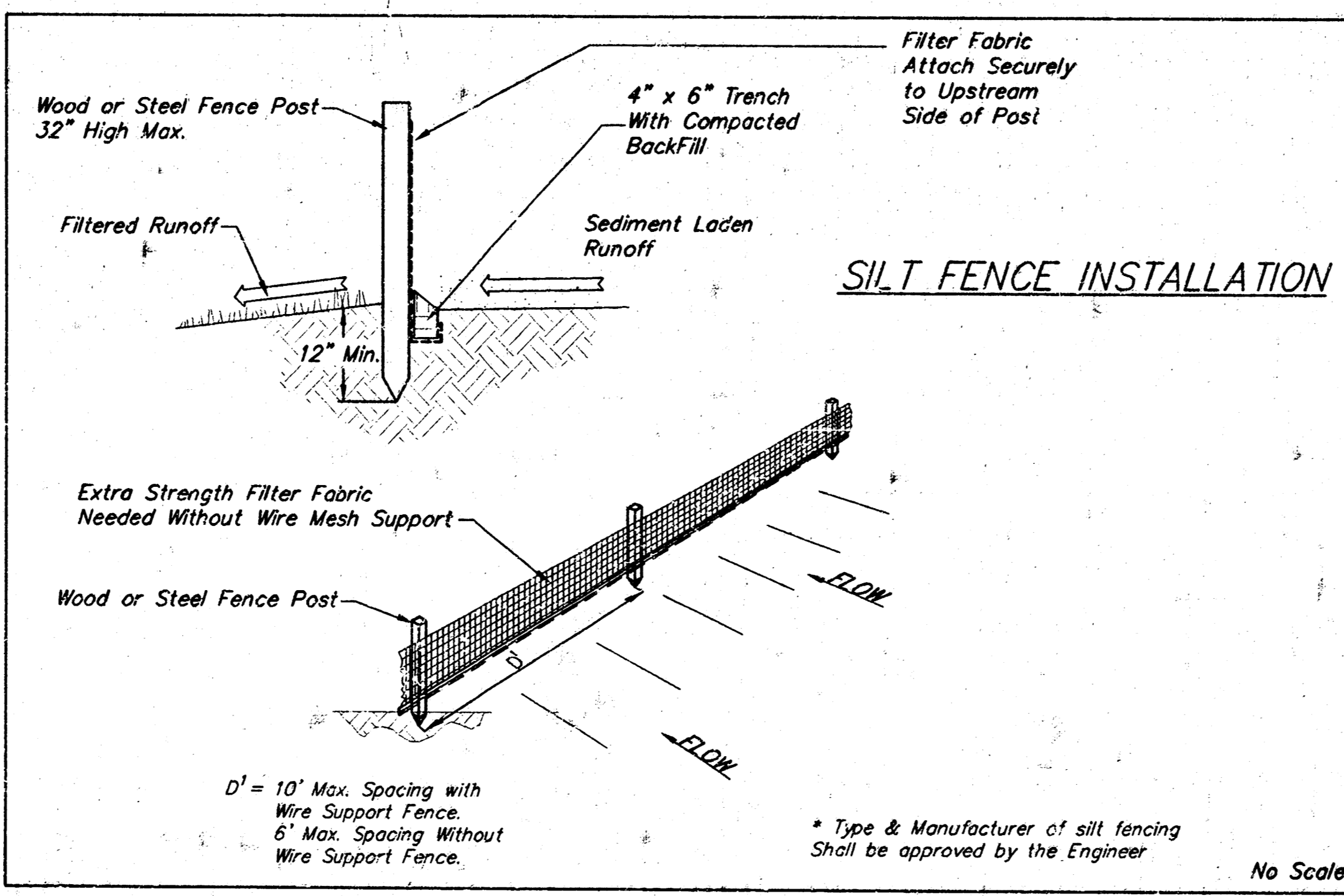
Instructions for Installing:

- STEP 1: Place concrete blocks around the inlet as shown on drawing. Insert 2x4 board as shown.
- STEP 2: Wrap 1/2" mesh wire screen around the concrete blocks.
- STEP 3: Place 1" to 1-1/2" diameter rock around the blocks and wire screen. Be sure the rock extends down from the top of the concrete block.
- STEP 4: To prevent damage to vehicles, signs warning drivers about the structures may be necessary. An alternative installation is the use of gravel bags supported by a 2"x4" board to prevent collapsing.

Use of rock with diameters smaller than 1" in the bag may result in clogging of pores and reduce the amount of water flowing into an inlet.

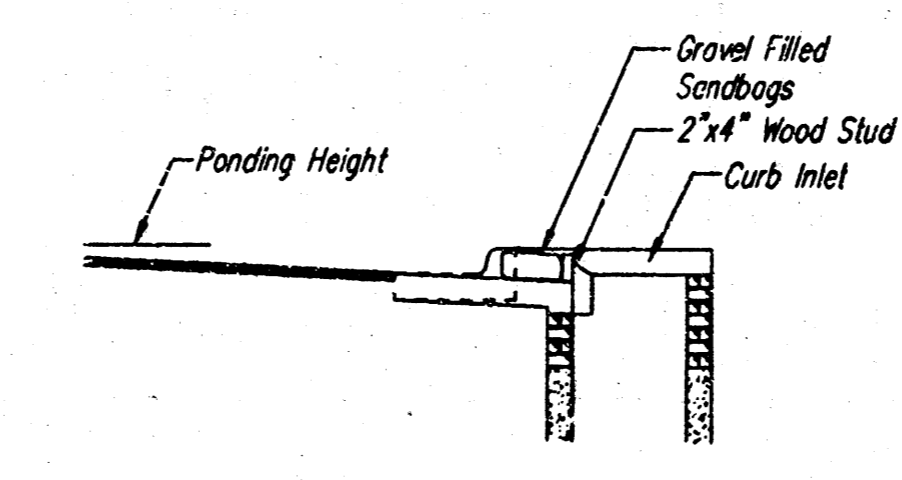
Maintenance:

All curb inlet gravel filters shall be inspected and repaired after each runoff event. Sediment deposits are to be removed once material is within 8 cm (3 inches) of the top of any block. Periodically, the gravel shall be raked to increase infiltration and filtering of runoff waters. Accumulated sediment is to be removed immediately from roads and streets.



SILT FENCE INSTALLATION

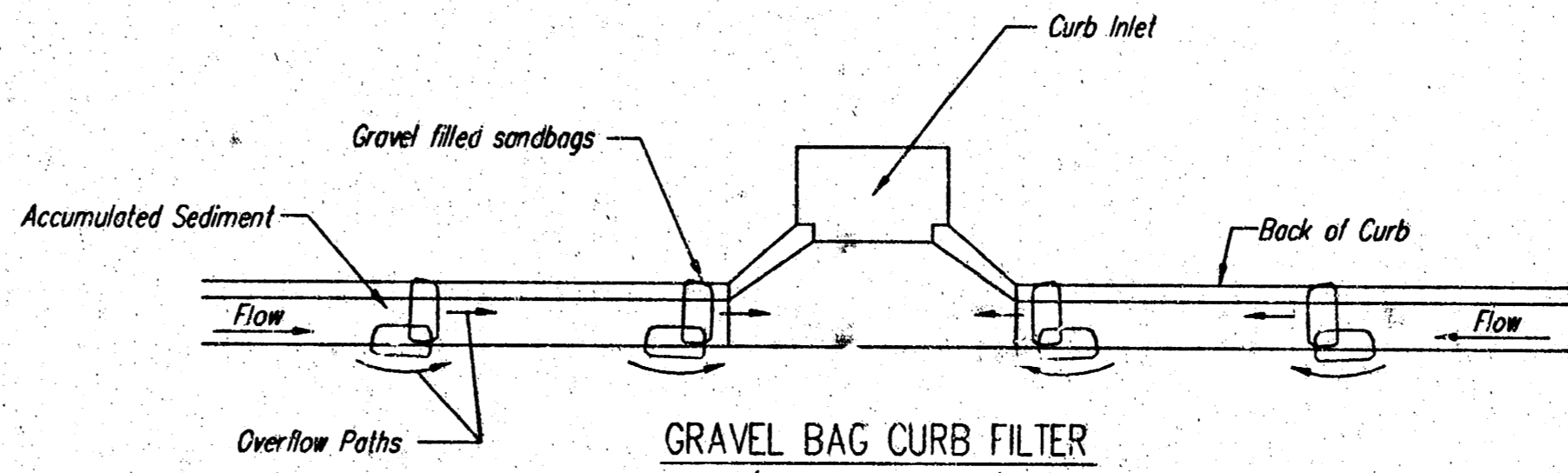
D¹ = 10' Max. Spacing with Wire Support Fence.
6' Max. Spacing Without Wire Support Fence.
* Type & Manufacturer of silt fencing shall be approved by the Engineer.
No Scale



SECTION C-C

CURB INLET SANDBAG FILTERS
(INLET PROTECTION)

NOTE: Other types of curb inlet protection may be approved by the City so long as equal protection is provided.



GRAVEL BAG CURB FILTER
(INLET PROTECTION)

NOTE: Place two or more sets of bags in a manner that results in maximum support. The flow line bag must be lower than top of curb.

CURB SEDIMENT TRAPS

When inlets are located on streets having a grade (i.e., sump conditions do not exist), installing gravel (or sand) bags in the gutter flow line to create small sediment traps can be considered. Gravel bags are recommended over sand bags to allow for drainage.

If the spacing between bags becomes too large, little sediment may be trapped. Spacing of bags should be completed using the table or graph that illustrates placement distances based upon street slope. When installed in the gutter, bag tops must be lower than the sidewalk.

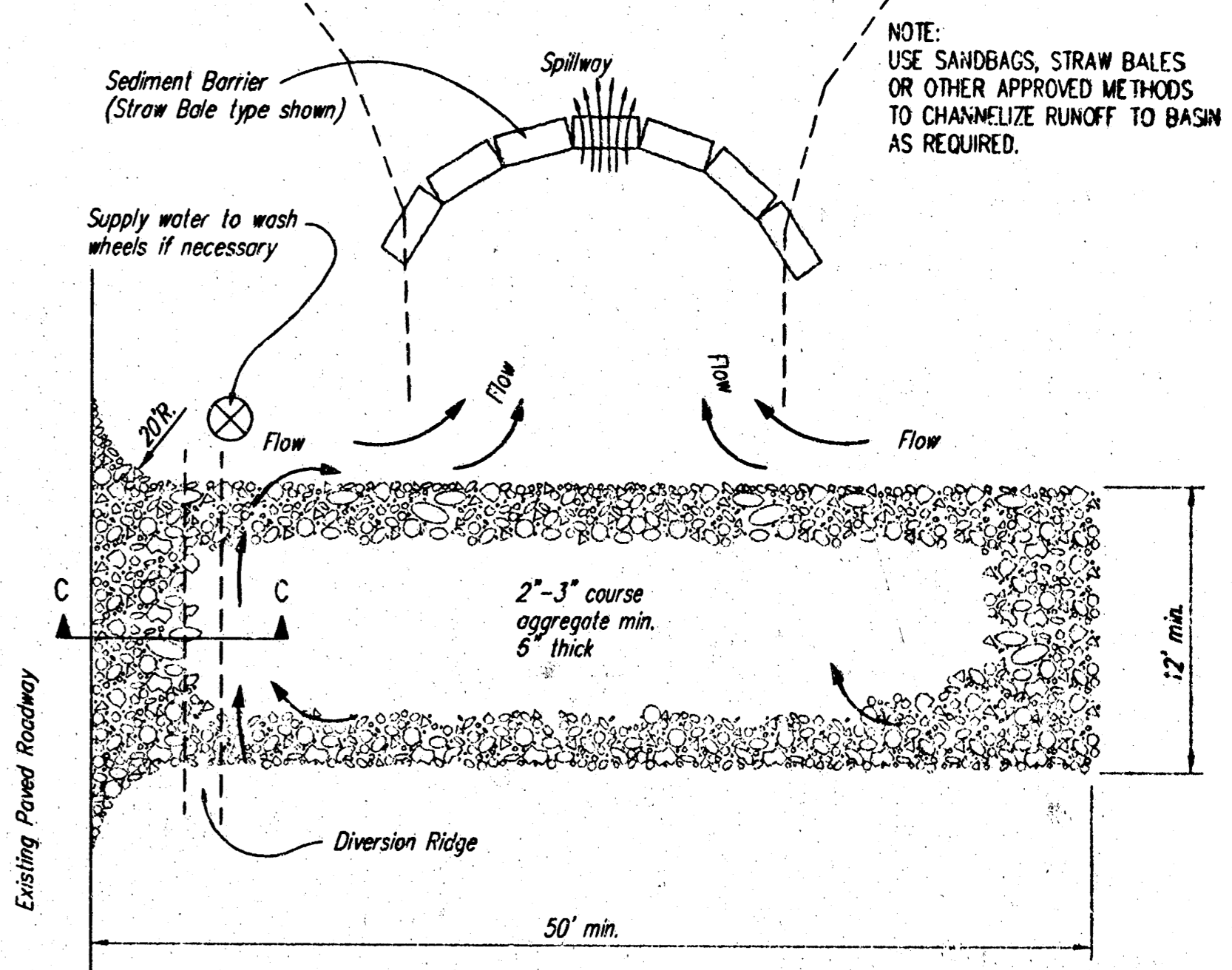
Spacing:

Gravel bags are to be placed according to street grades using the following table or graph that appears below.

GRADE (%)	SPACING (FEET)
0.5	75
1.0	45
2.0	18
3.0	12
4.0	9
5.0	6

Maintenance:

Collected sediment shall be removed after every runoff event. Bags that are destroyed by vehicular traffic or through natural deterioration are to be immediately replaced.



STABILIZED CONSTRUCTION ENTRANCE

NOTES:

1. THE ENTRANCE SHALL BE MAINTAINED IN A CONDITION THAT WILL PREVENT TRACKING OR FLOWING OF SEDIMENT ONTO PUBLIC RIGHTS-OF-WAY. THIS MAY REQUIRE TOP DRESSING, REPAIR AND/OR CLEANOUT OF ANY MEASURES USED TO TRAP SEDIMENT.
2. WHEN NECESSARY, WHEELS SHALL BE CLEANED PRIOR TO ENTRANCE TO PUBLIC RIGHT-OF-WAY.
3. WHEN WASHING IS REQUIRED, IT SHALL BE DONE ON AN AREA STABILIZED WITH CRUSHED STONE THAT DRAINS INTO AN APPROVED SEDIMENT TRAP OR SEDIMENT BASIN, AS SHOWN ABOVE.
4. DRIVE ENTRANCES ONTO RESIDENTIAL LOTS WILL NOT BE REQUIRED TO HAVE THE SEDIMENT BARRIER SHOWN, BUT WHEEL WASHING MAY BE REQUIRED IF STABILIZED ENTRANCE IS NOT SUFFICIENT TO KEEP MUD FROM BEING TRACKED ONTO ADJACENT STREET. ENTRANCE SHALL EXTEND FROM BACK OF CURB TO DWELLING.

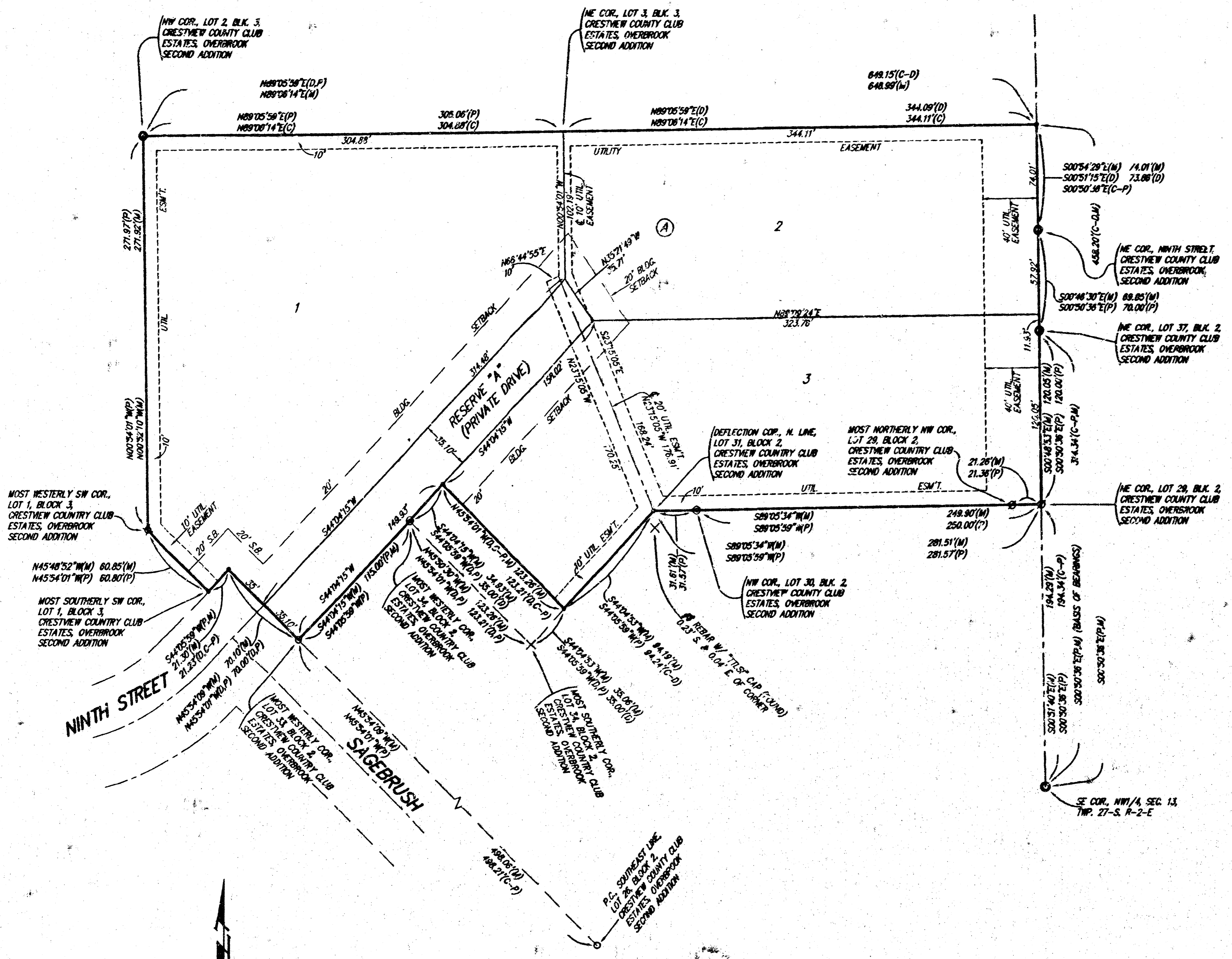


SOIL EROSION BMP DETAILS

CHRISTOPHER M. CARRIER, P.E.
STORM WATER ENGINEER

PROJECT NUMBER 1540 PPS (607861)	DCA NO. NA
DATE 4/05	SHEET 4 OF 5

CEDAR LANE ESTATES SEDGWICK COUNTY, KANSAS



- = #4 REBAR W/ "BAUGHMAN" CAP (SET)
- ⊙ = #4 REBAR W/ "SRT" CAP (FOUND)
- ⊗ = #4 REBAR W/ "WICK" CAP (FOUND)
- = #4 REBAR (FOUND)
- ⊗ = #4 REBAR W/ "TILES" CAP (FOUND)
- ⊗ = #5 REBAR W/ "WAINWRIGHT" CAP (FOUND)
- ⊗ = #5 REBAR (FOUND)

- (M) = MEASURED
- (D) = DESCRIBED
- (P) = PLATTED
- (C-P) = CALCULATED PER PLATTED INFO.
- (C-D) = CALCULATED PER DESCRIBED INFO.

NOTE:
A master grading plan for drainage has been developed for this subdivision and is on file with the City of Wichita, Kansas. All drainage easements, right-of-way, or reserves shall remain at established grades or as modified with the approval of the City Engineer of the City of Wichita, Kansas. No obstructions which impede the flow of this drainage system be allowed.

We, the undersigned owners of Lot 33, Block 2, Crestview Country Club Estates, OVERBROOK SECOND ADDITION, an Addition to Sedgwick County, Kansas, do hereby consent to the vacation of that part of Ninth Street as proposed by the platting of Cedar Lane Estates, Sedgwick County, Kansas.

We hereby agree that Reserve "A" shall be reserved for a private drive, open space, landscaping, drainage purposes, and utilities.

Derren R. Schmidt Denise D. Schmidt
Derren R. Schmidt Denise D. Schmidt

State of Kansas)
County of Sedgwick) SS The foregoing instrument acknowledged before me this 4th day of November, 2004, by Derren R. Schmidt and Denise D. Schmidt, husband and wife.

Susan K. Monette
Notary Public - State of Kansas
My App'l. Exp. 11-9-07

State of Kansas,)
Sedgwick County) SS We, Baughman Company, P.A., Surveyors in aforesaid county and state do hereby certify that we have surveyed and platted "CEDAR LANE ESTATES", Sedgwick County, Kansas and that the accompanying plat is a true and correct exhibit of the property surveyed, described as and being a replat of Lot 34, Block 2, Crestview Country Club Estates, OVERBROOK SECOND ADDITION, an Addition to Sedgwick County, Kansas, except that part of said Lot 34 described as follows: Beginning at the most westerly corner of said Lot 34; thence N44°05'59"E along the northwest line of said Lot 34, 35.00 feet; thence S45°54'01"E parallel with the southwest line of said Lot 34, 123.21 feet to a point on the southeast line of said Lot 34; thence S44°05'59"W along the southeast line of said Lot 34, 35.00 feet to the most southerly corner of said Lot 34; thence N45°54'01"W along the southwest line of said Lot 34, 123.21 feet to the point of beginning, together with all of Lots 26, 36, and 37, Block 2, together with all of Lots 1, 2, and 3, Block 3, all in said Crestview Country Club Estates, OVERBROOK SECOND ADDITION, together with that part of Ninth Street as dedicated in said Crestview Country Club Estates, OVERBROOK SECOND ADDITION lying northeasterly and easterly of the following described line: Beginning at the most westerly corner of Lot 33 in said Block 2; thence N45°54'01"W along the northwesterly extension of the southwest line of said Lot 33, 70.00 feet to a point on the southeast line of Lot 1 in said Block 3, said point being 21.23 feet northeast of the most southerly corner of Lot 1 in said Lot 3, and there ending, and together with a tract of land lying in the NW1/4 of Sec. 13, Twp. 27-S, R-2-E of the 6th P.M., Sedgwick County, Kansas, more particularly described as follows: Beginning at a point on the east line of said NW1/4 and the north line of Ninth Street; North as platted in Crestview Country Club Estates, OVERBROOK SECOND ADDITION, an Addition to Sedgwick County, Kansas; thence following along the north line of said Ninth Street S89°05'59"W, 254.03 feet to a point on a curve to the left; thence along said curve, 91.79 feet, said curve having a central angle of 19°37'49", a radius of 267.90 feet and a long chord of 91.34 feet, bearing S78°17'04"W, to the SE corner of Lot 3, Block 3, in said OVERBROOK SECOND ADDITION; thence N00°54'01"W, 89.43 feet to the NE corner of said Lot 3; thence N89°05'59"E, 344.09 feet to the east line of said NW1/4; thence S00°51'15"E, 73.86 feet to the point of beginning.

Existing public easements and dedications being vacated by virtue of K.S.A. 12-512(b).
All being situated in the NW1/4 of Sec. 13, Twp. 27-S, R-2-E of the 6th P.M., Sedgwick County, Kansas.
Baughman Company, P.A.

Michael A. Conroy
Michael A. Conroy, Surveyor
12-07-2004

Know all men by these presents that we, the undersigned, have caused the land in the surveyors certificate to be platted into Lots, a Block, and a Reserve, to be known as "CEDAR LANE ESTATES", Sedgwick County, Kansas. The utility easements are hereby granted as indicated for the construction and maintenance of all public utilities. Reserve "A" is hereby reserved for a private drive, open space, landscaping, drainage purposes, and utilities. Lots 1, 2, and 3, Block A, shall have rights of access to or from Ninth Street over and across said Reserve "A". Reserve "A" shall be owned and maintained by the owner of Lot 1, Block A.

James P. Reilly
James P. Reilly, Partner
Cedar Lane Farms, LLP

State of Kansas)
Sedgwick County) SS The foregoing instrument acknowledged before me this 3rd day of December, 2004, by James P. Reilly, Partner of Cedar Lane Farms, LLP, on behalf of the limited liability partnership.

Susan K. Monette
Notary Public - State of Kansas
My App'l. Exp. 11-9-07

This plat of "CEDAR LANE ESTATES", Sedgwick County, Kansas has been submitted to and approved by the Wichita-Sedgwick County Metropolitan Area Planning Commission, Wichita, Kansas.
Dated this 23rd day of January, 2004.
Wichita-Sedgwick County Metropolitan Area Planning Commission

Ronald L. Marnell, Chairman
John L. Schlegel, Secretary

This plat approved and all dedications shown hereon accepted by the Board of Commissioners of Sedgwick County, Kansas, this 18th day of January, 2005.

David M. Uhrh, Chairman
Don Brace, County Clerk

This plat approved and all dedications shown hereon accepted by the City Council of the City of Wichita, Kansas, this 4th day of JANUARY, 2004.

Carlos Moyano, Mayor
Karen Sublett, City Clerk

Reviewed in accordance with K.S.A. 58-2005 on this 17th day of November, 2004.

Tricia L. Robello, L.S. #1246
Deputy County Surveyor
Sedgwick County, Kansas

Entered on transfer record this 13th day of January, 2005.

Don Brace, County Clerk

State of Kansas)
Sedgwick County) SS This is to certify that this plat has been filed for record in the office of the Register of Deeds, this 26th day of January, 2005 at 9:18 o'clock P.M.; and is duly recorded.

Bill Week, Register of Deeds
Linda Rizziere, Deputy

Baughman Company, P.A.
315 Ellis St. Wichita, KS 67211 P 316-262-7271 F 316-262-0149
REGISTERED PROFESSIONAL ENGINEERS | SURVEYORS | PLANNERS | LANDSCAPE ARCHITECTS