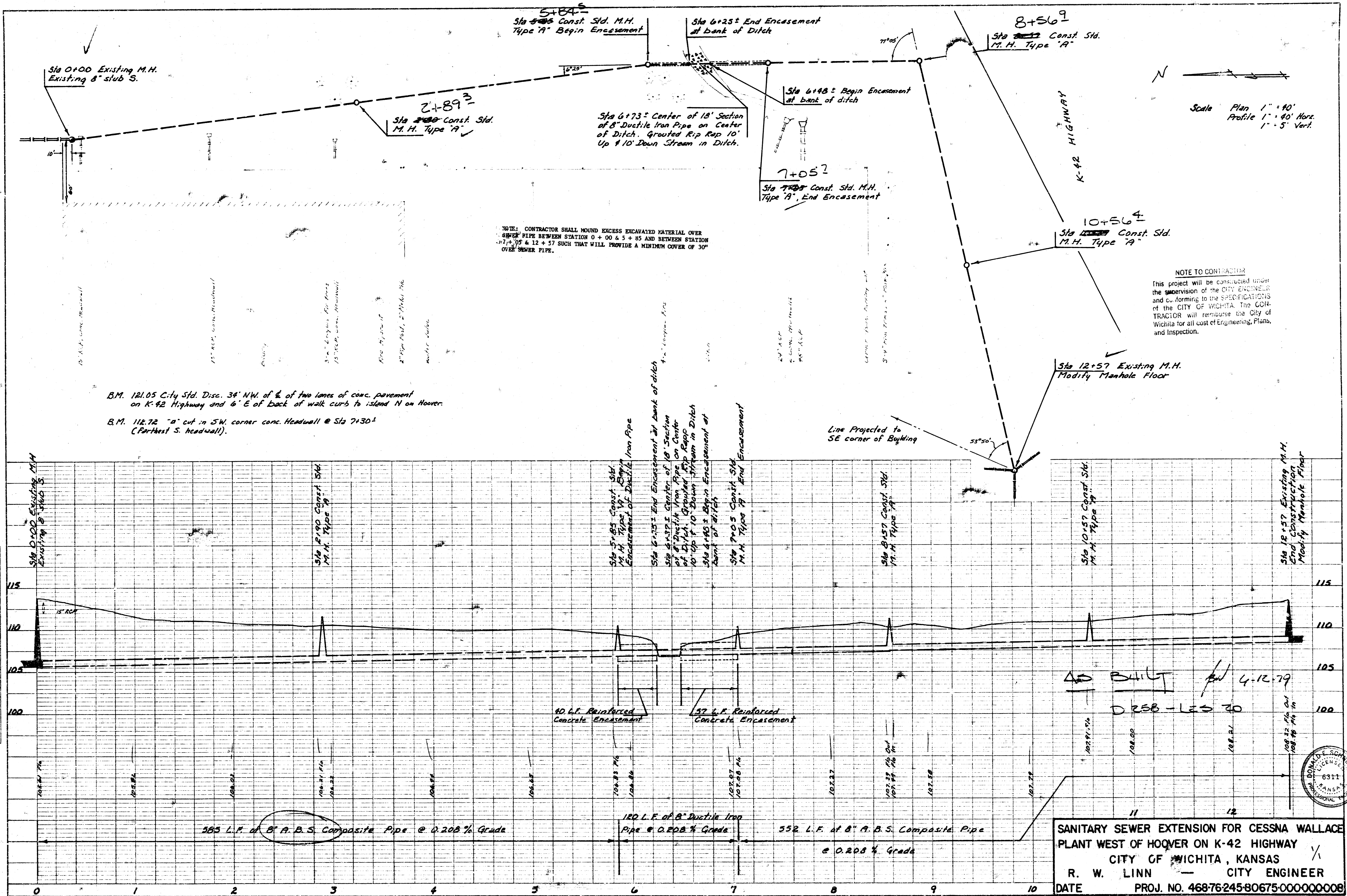


PLAN
 DATE: 4-12-79
 BY: R. W. LINN
 CHECKED: R. W. LINN
 TITLE: SANITARY SEWER EXTENSION FOR CESSNA WALLACE PLANT WEST OF HOOPER ON K-42 HIGHWAY

PROFILE
 DATE: 4-12-79
 BY: R. W. LINN
 CHECKED: R. W. LINN
 TITLE: SANITARY SEWER EXTENSION FOR CESSNA WALLACE PLANT WEST OF HOOPER ON K-42 HIGHWAY



NOTE: CONTRACTOR SHALL MOUND EXCESS EXCAVATED MATERIAL OVER 8\"/>

NOTE TO CONTRACTOR
 This project will be constructed under the supervision of the CITY ENGINEER and conforming to the SPECIFICATIONS of the CITY OF WICHITA. The CONTRACTOR will reimburse the City of Wichita for all cost of Engineering, Plans, and Inspection.

B.M. 121.05 City Std. Disc. 34' NW. of E. of two lanes of conc. pavement on K-42 Highway and 6' E of back of walk curb to island N on Hoover.
 B.M. 112.72 "a" cut in SW corner conc. Headwall @ Sta 7+30[±] (Farthest S. headwall).

SANITARY SEWER EXTENSION FOR CESSNA WALLACE PLANT WEST OF HOOPER ON K-42 HIGHWAY
 CITY OF WICHITA, KANSAS
 R. W. LINN CITY ENGINEER
 DATE PROJ. NO. 468-76245-80675-00000008

14 - e - 1 - 10