

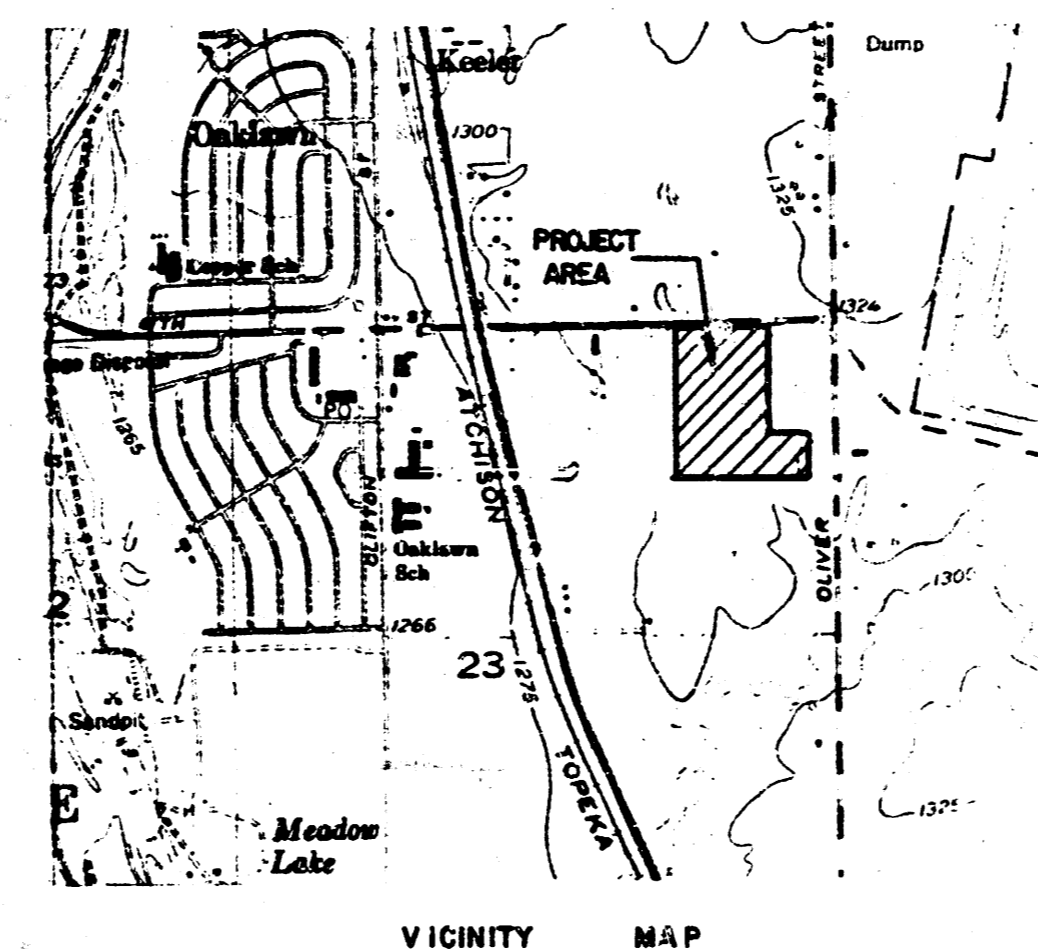
"AS CONSTRUCTED"

PLANS FOR

SANITARY SEWER EXTENSIONS
LOT 1, BLK. A CHELSEA INDUSTRIAL PARK
SEDGWICK CO., KS.

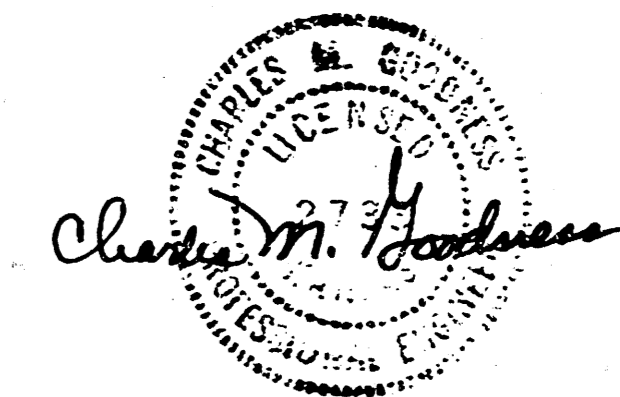
City of Wichita Proj. No. 468-76-245-80001-000-000-049

1985



APPROVED AS NOTED
By CITY ENGINEER OF WICHITA
Sanitary Sewers *EB 1/16/85*
Storm Sewers _____
Driveway Approaches _____
Water Mains _____

NOTE TO CONTRACTOR
This project will be constructed under the supervision of the CITY ENGINEER and conforming to the SPECIFICATIONS of the CITY OF WICHITA. The CONTRACTOR will pay the City of Wichita for all costs of plan review, inspection and booking per contract.

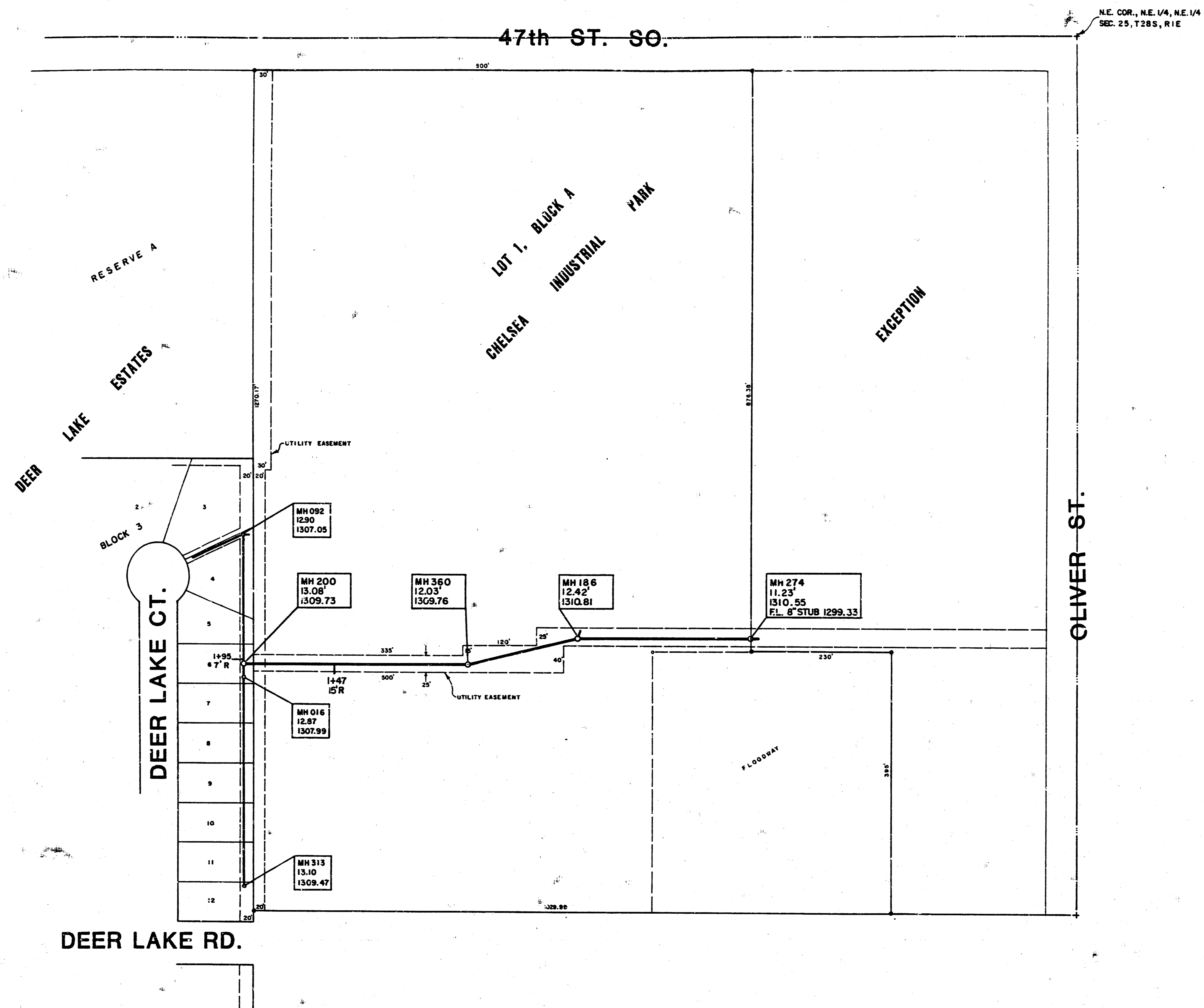


DEISS & GOODNESS ENGINEERS
2100 WEST 21ST STREET
WICHITA, KANSAS 67203
(316) 622-0223

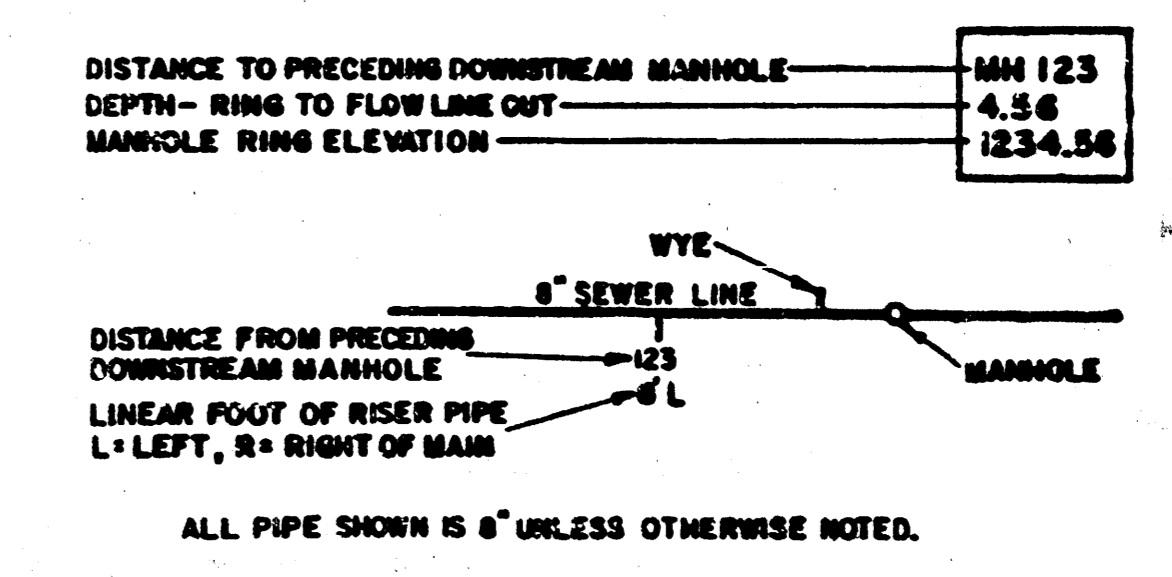
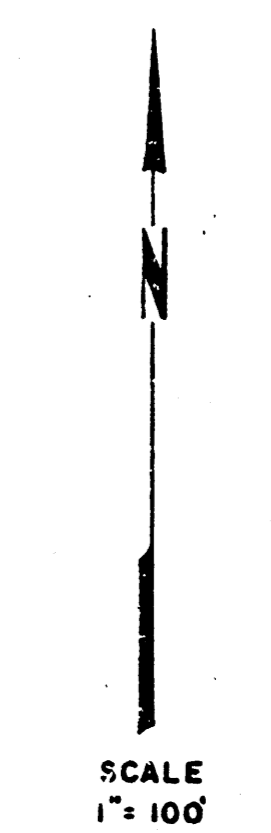
REVISION	DRAWN BY	CHECKED BY	DESIGNED BY	PROJECT	CUSTOMER

SCALE _____ PROJECT NO. **SE 1055**
DATE 12/23/85 SHEET 1 OF 4

FILMED FROM THE BEST AVAILABLE COPY



N.E. COR., N.E. 1/4, N.E. 1/4
SEC. 25, T28S, R1E



REISS & GOODNESS ENGINEERS
 2160 WEST 21ST STREET
 WICHITA, KANSAS 67203
 (316) 632-0225

REVISION	DRAWN BY	CHECKED BY	DESIGNED BY	PROJECT	"AS CONSTRUCTED" SANITARY SEWER SYSTEM	CUSTOMER	CHELSEA IND. PARK, SEDGWICK CO., KS.	SCALE	PROJECT NO.
								DATE	SHEET 2/3

FILMED FROM THE BEST AVAILABLE COPY

