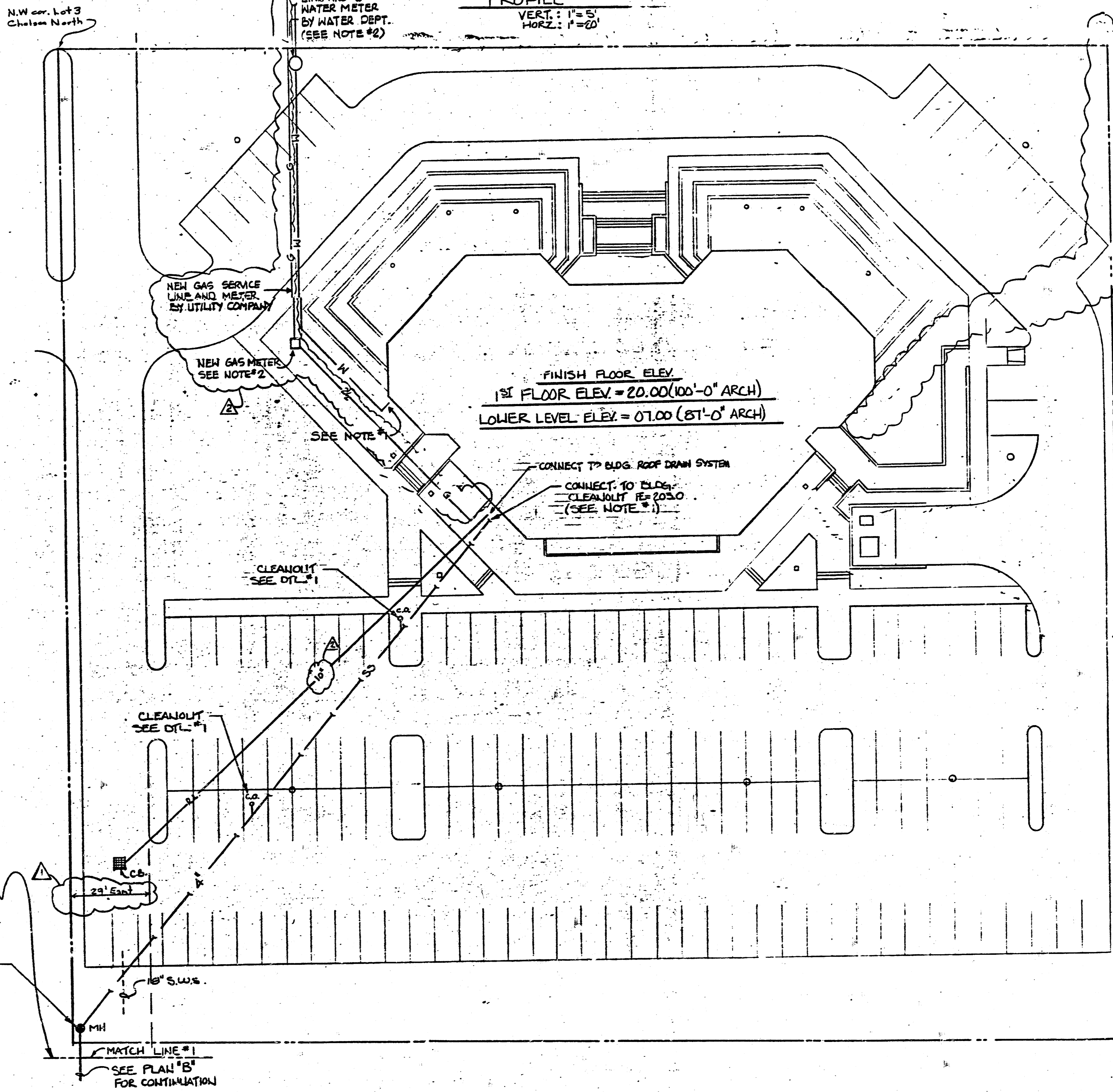
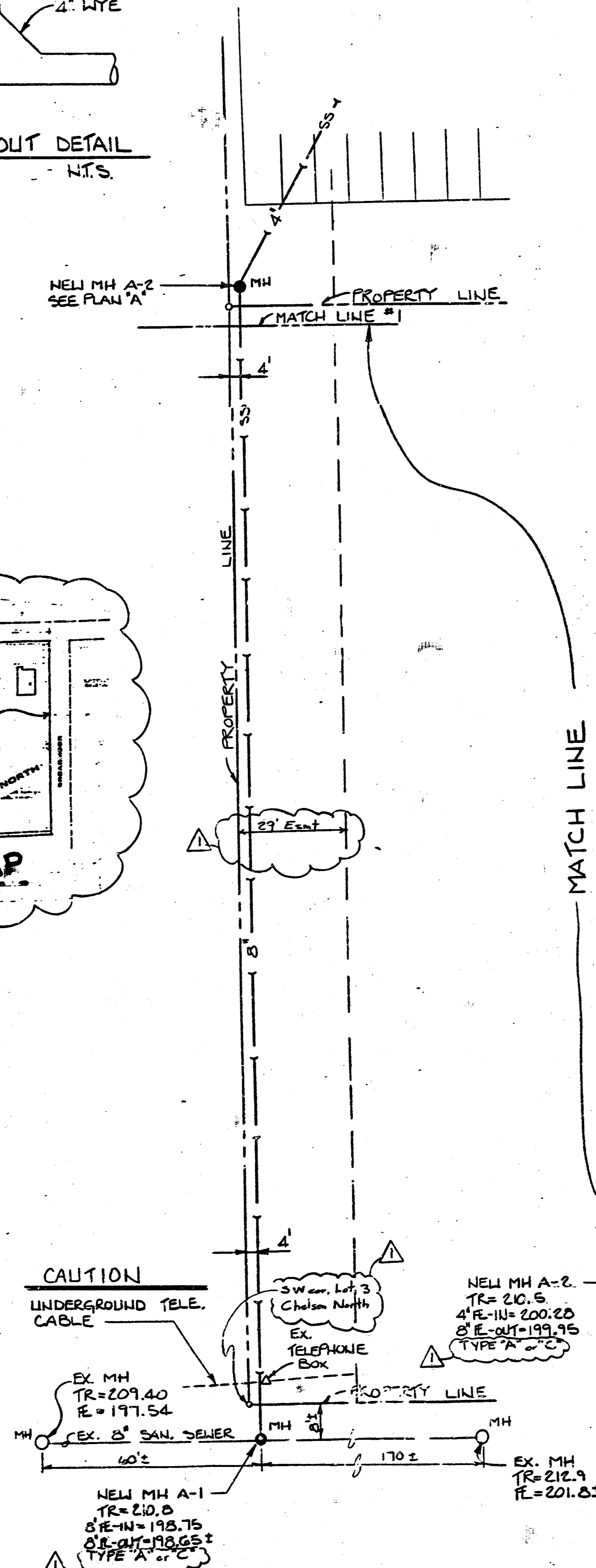
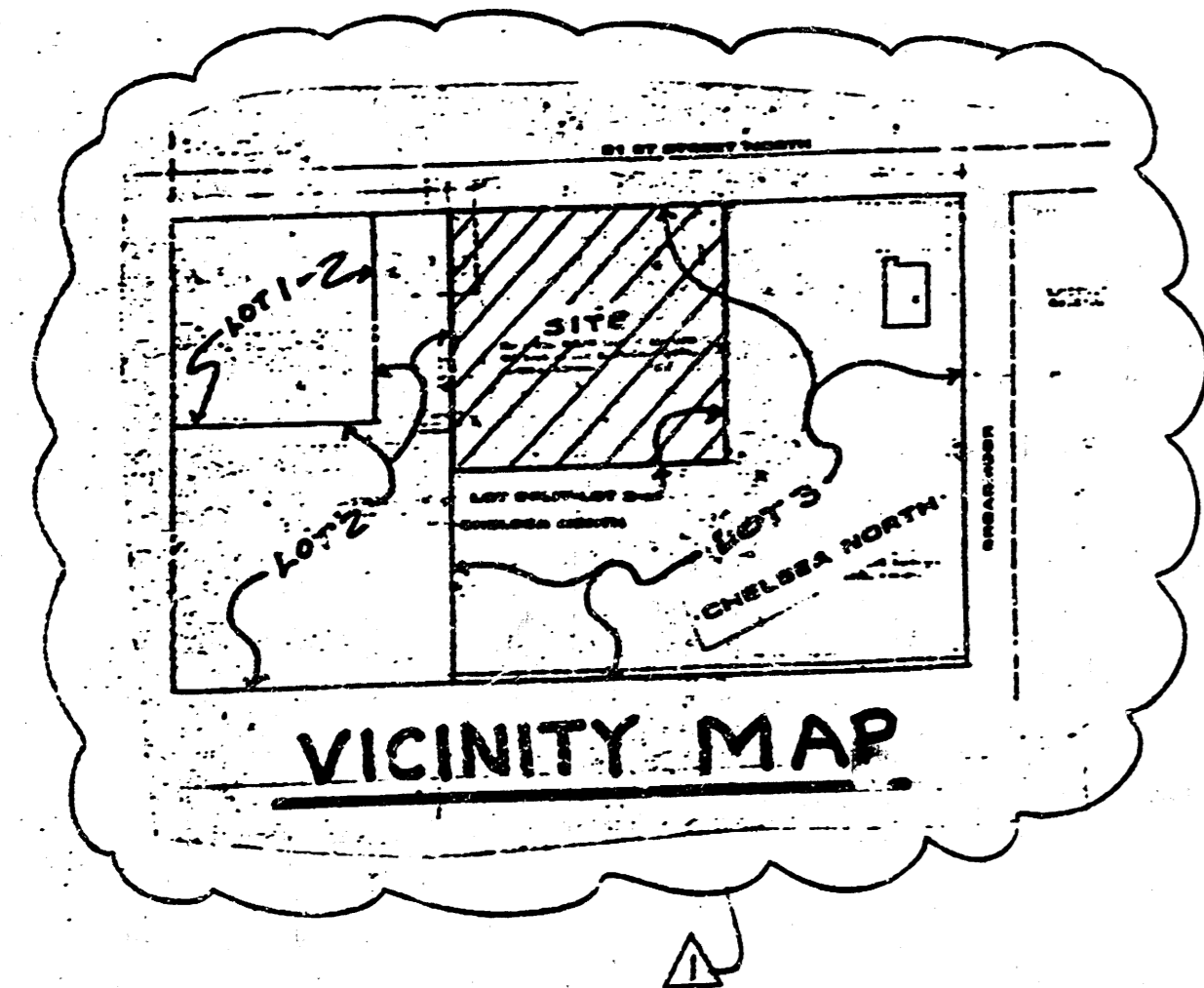
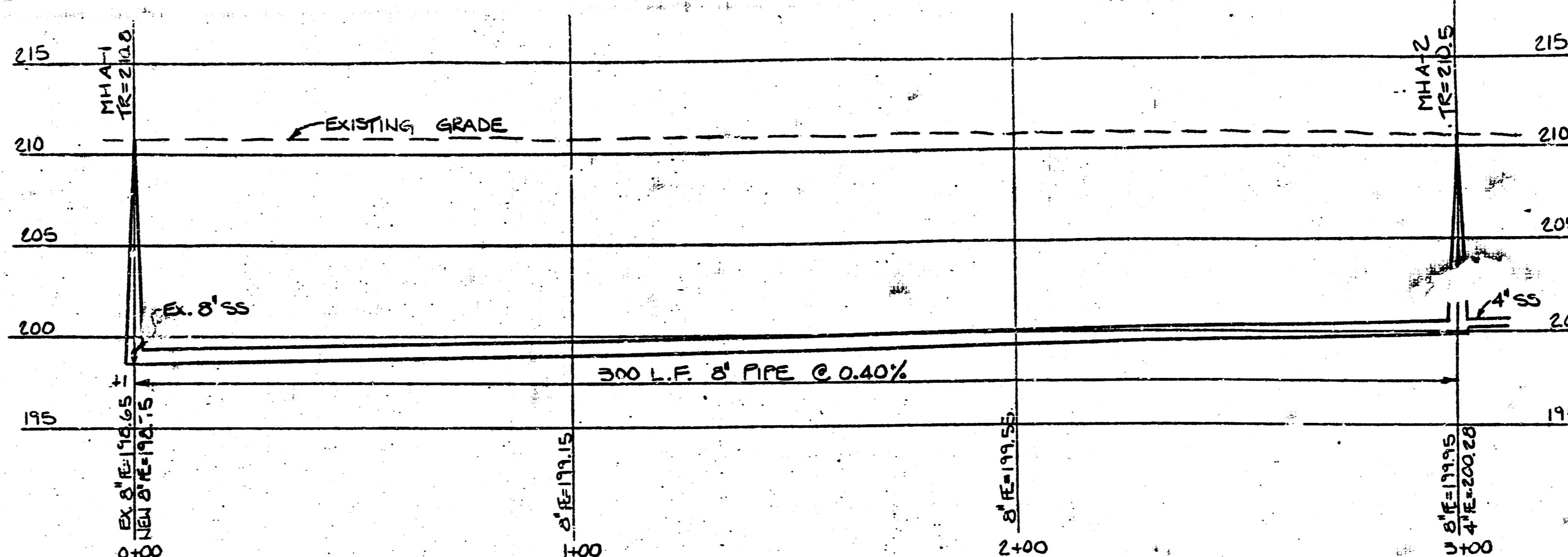


SANITARY SEWER NOTES:

1. ALL WELL & SANITARY SEWER LINE AND NEW MANHOLES TO BE CONSTRUCTED IN ACCORDANCE WITH CITY OF WICHITA STANDARDS AND SPECIFICATIONS.
2. RIM ELEVATIONS OF MH # A-1 & A-2 MAY BE ADJUSTED FROM THE TOP OF RIM (TR) ELEVATIONS SHOWN TO MATCH THE EXISTING GROUND ELEV.



PROFILE
VERT.: 1"=5'
HORIZ.: 1"=20'

LEGEND

	MANHOLE
	CLEANOUT
	NEW SAN. SEWER
	NEW WATER LINE
	NEW GAS LINE
	GAS METER

- NOTES:**
1. REFER TO PLUMBING PLANS FOR EXACT LOCATION AND ELEVATION OF UTILITIES AT THE BUILDING.
 2. CONTRACTOR TO COORDINATE WITH UTILITY COMPANIES TO INSTALL NEW GAS AND NEW WATER METERS. CONTRACTOR TO PROVIDE METER VAULT, PAD CONNECTIONS, ETC. AS REQUIRED BY UTILITY COMPANY.

PRINTS ISSUED		
DATE	PURPOSE	NO.
7/16/04	FOR BLDG PERMIT	5
8/14/04	FOR CONSTRUCTION	10

FOR CONSTRUCTION: 0/1/04

REVISIONS		
DATE	ITEM	NO.
2/21/04	PER CITY REVIEW	1
8/29/04	RELAYED GAS METER	2

LAW/KINGDON, INC.
ARCHITECTS & ENGINEERS
348 WINTERVIEW, WICHITA, KANSAS 67203
PHONE 316-268-0880 Copyright © 2004

DESIGN	CHECKED

RELATED DRAWINGS

SHEET	DETAILS	STRUCTURE	Mechanical	Electrical	Other

SEQUENCE NUMBER OF SHEETS

ALLIANCE LIFE INSURANCE COMPANY OFFICE BUILDING
WICHITA KANSAS
PROJECT NUMBER 7442

KEY PLAN

SITE UTILITY PLAN
SHEET NUMBER
SU-1
1/2 OF SHEETS

WICHITA D. FRIDGEN
LICENSED PROFESSIONAL ENGINEER
KANSAS
0719

SANITARY SEWER AND STORM SEWER EXTENSION TO SERVE PART OF LOT 3, CHELSEA NORTH ADDITION
City of Wichita
Project # 448-76-245-20000-000-070-000

FILMED FROM THE BEST AVAILABLE COPY

