

# SANITARY SEWER EXTENSION TO SERVE LOT B , BLOCK 1

## CHISHOLM CREEK

PROJECT NO.

468-76-245-80001-000-000-139

CITY OF WICHITA , KANSAS  
MICHAEL E. LINDEBAK, CITY ENGINEER  
OCTOBER , 1987

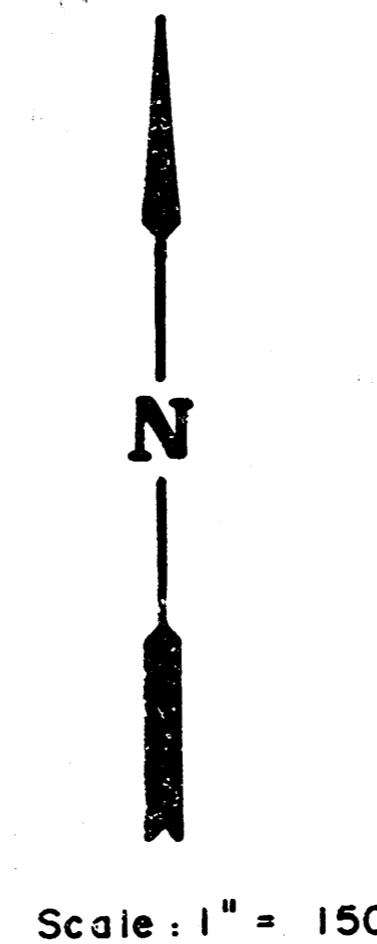
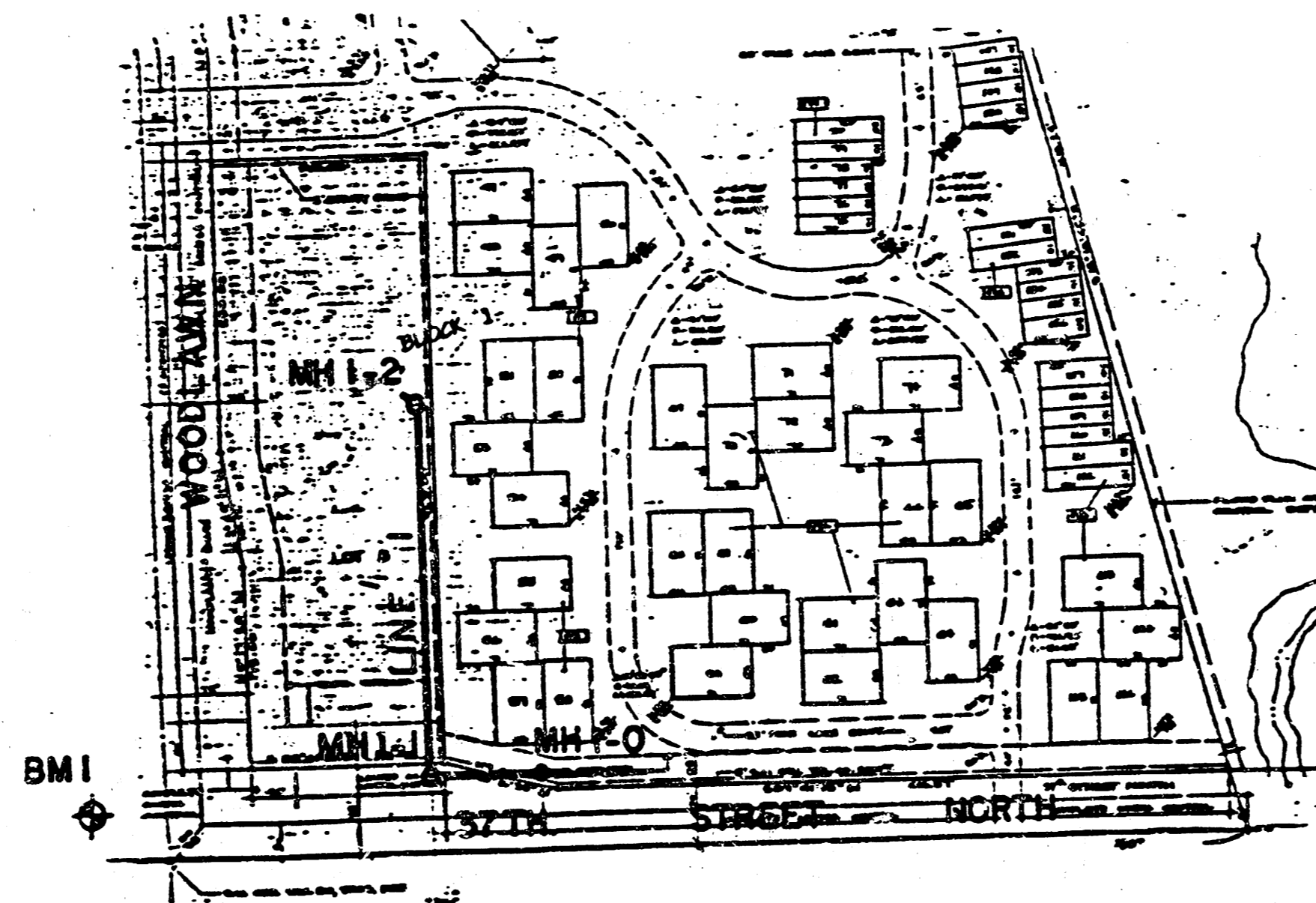
### GENERAL NOTES

1. THE CONTRACTOR SHALL BE RESPONSIBLE FOR PRESERVING PROPERTY IRONS. THE CONTRACTOR SHALL BE REQUIRED TO RE-ESTABLISH ANY PROPERTY IRONS WHICH ARE DAMAGED OR DESTROYED BY HIS CONSTRUCTION OPERATIONS. SUCH IRONS SHALL BE RE-ESTABLISHED BY A LICENSED LAND SURVEYOR OR A LICENSED PROFESSIONAL ENGINEER IN ACCORDANCE WITH STATE LAWS.
2. EXISTING UTILITIES AND THEIR LOCATIONS, AS SHOWN ON THE PLANS, REPRESENT THE BEST INFORMATION OBTAINABLE FOR DESIGN. LOCATION INFORMATION HAS BEEN OBTAINED FROM THE VARIOUS UTILITY COMPANIES AND IS EITHER FROM COMPANY RECORD DRAWINGS OR COMPANY PROVIDED FIELD LOCATIONS. THE PLAN LOCATIONS SHOWN ARE NOT GUARANTEED. ADDITIONAL EXISTING UTILITIES MAY ALSO BE ENCOUNTERED.
3. ALL STUBS AND PLUGGED PIPES SHALL BE LOCATED WITH GREEN PLASTIC TAPE IN THE SAME MANNER AS RISERS.
4. COST OF EXCAVATION, HAULING, AND DUMPING OF EXCESS EXCAVATION SHALL BE SUBSIDIARY TO THE PROJECT.
5. PRIOR TO LAYING SEWER LINES USING EXISTING STUBS IN EXISTING MANHOLES, THE CONTRACTOR SHALL EXPOSE AND VERIFY THE ELEVATION, GRADE AND ALIGNMENT OF EXISTING STUBS AND NOTIFY THE ENGINEER OF ANY DEVIATION FROM THE PLAN. WHERE CONNECTING TO AN EXISTING MANHOLE THAT DOES NOT HAVE AN EXISTING STUB OR THE STUB IS UNUSABLE DUE TO ELEVATION GRADE OR ALIGNMENT, THE CONTRACTOR SHALL RESHAPE THE EXISTING MANHOLE INVERT TO PROVIDE SMOOTH FLOW. THE COST OF RESHAPING EXISTING MANHOLE INVERTS IS INCIDENTAL TO THE PROJECT.
6. CONTRACTOR SHALL NOTIFY THE FOLLOWING COMPANIES PRIOR TO ANY EXCAVATION:

ARKLA GAS COMPANY	942-8350
BELL TELEPHONE	1-316-571-2115
CABLEVISION	262-0661
GAS SERVICE COMPANY	263-7511
KANSAS GAS & ELECTRIC	
KANSAS ONE-CALL	1-800-344-7233
CITIES SERVICE	524-0491
KANSAS GAS SUPPLY	1-316-254-7243
CONTINENTAL PIPELINE COMPANY	1-316-681-2081

### BENCH MARKS

B.M. 1 CITY DISC: 70' WEST, 38' NORTH E.  
WOODLAWN @ 37th STREET NORTH.  
ELEV. = 186.17 CITY DATUM

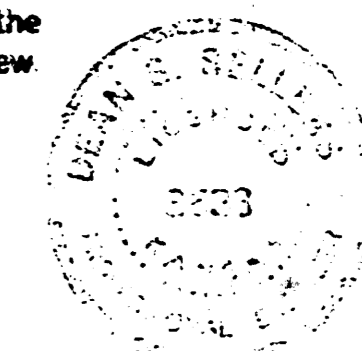


INDEX TO DRAWINGS	
SHEET NO.	DESCRIPTION
1	TITLE SHEET
2	LINE 1

APPROVED AS NOTED  
By CITY ENGINEER OF WICHITA  
Sanitary Sewers *MEL Lindebak*  
Storm Sewers \_\_\_\_\_  
Driveway Approaches \_\_\_\_\_  
Water Mains \_\_\_\_\_  
Paving \_\_\_\_\_

### NOTE TO CONTRACTOR

This project will be constructed under the supervision of the CITY ENGINEER and conforming to the SPECIFICATIONS of the CITY OF WICHITA. The CONTRACTOR will pay the City of Wichita for all costs of plan review inspection and booking per contract.

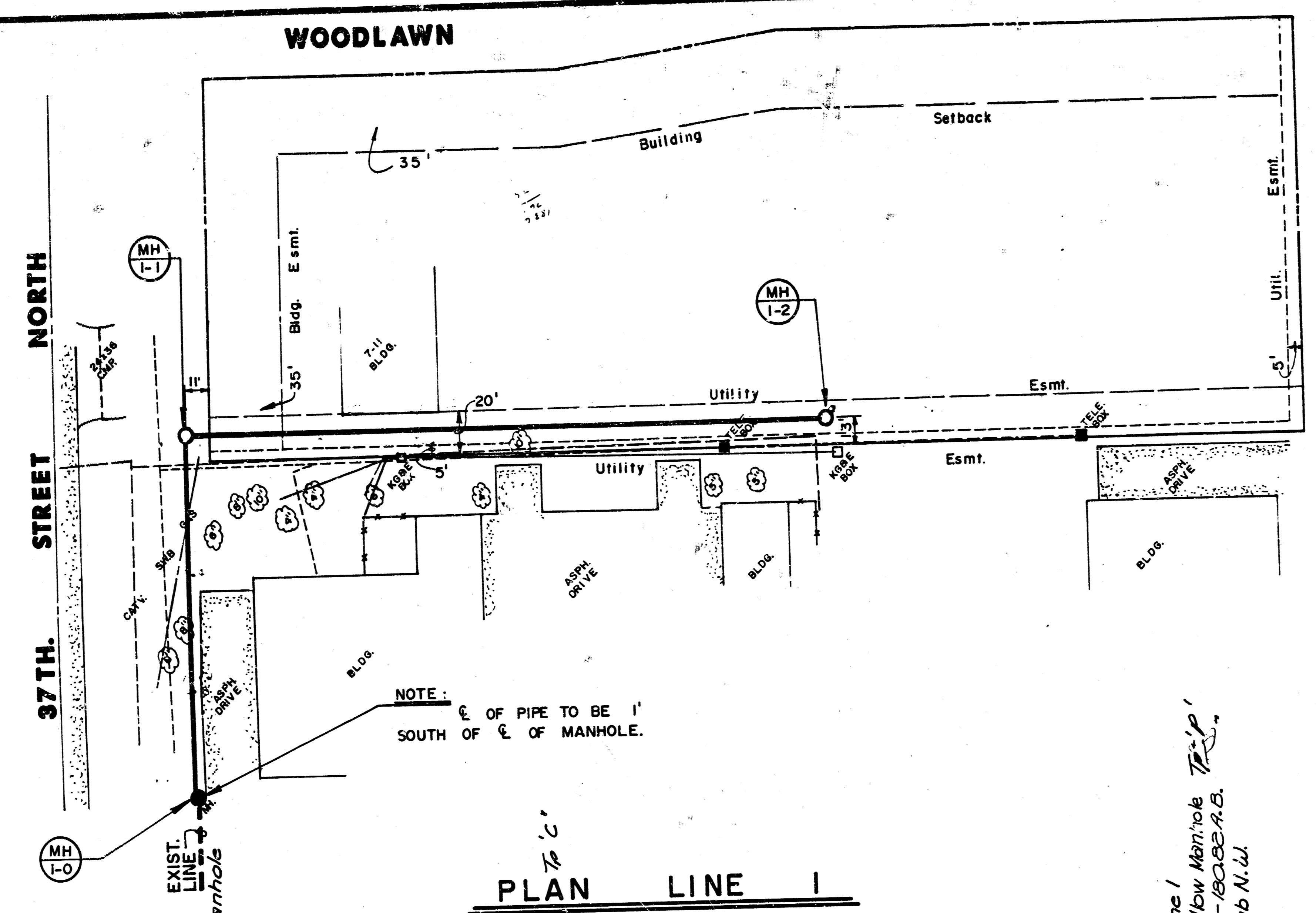


AS BUILT DEC., 1987

	<b>CHISHOLM CREEK SANITARY SEWER EXTENSION</b>	Design: DSS Drawn by: DLM Checked by: DSS Date: Oct., 1987 Job no.:
	MID-KANSAS ENGINEERING CONSULTANTS PA 3500 NORTH ROCK ROAD BUILDING #800 WICHITA, KANSAS 67226	682-6561

FILMED FROM THE BEST AVAILABLE COPY

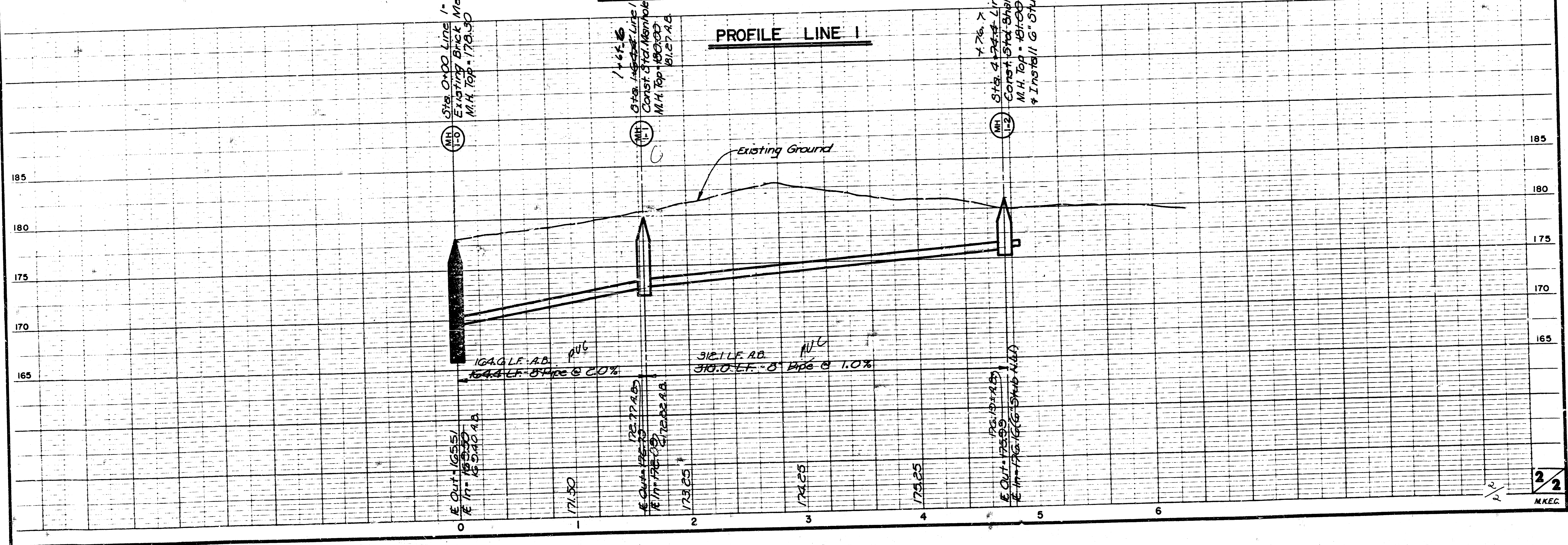
Scale: 1" = 40' Horiz.  
 1" = 5' Vert.



AS BUILT DEC., 1987

PLAN LINE 1

PROFILE LINE 1



FILMED FROM THE BEST  
 AVAILABLE COPY .....