

SANITARY SEWER IMPROVEMENTS TO SERVE

Block 1 Conway Addition

Project Number
1080 PPS (607861)

CITY OF WICHITA, KANSAS
Michael E. Lindebak, P. E., City Engineer

BENCHMARK

"a" Cut on East curb
west of the NW Corner,
Lot 1, Block 1 Power CDC
Addition.
ELEV.=123.66' (City Datum)

Piatt Street

GENERAL NOTES

1. Contractor will be required to provide notice to utility companies a minimum of twenty-four (24) hours prior to any excavation, as follows:

Kansas One-Call 687-2470

The Contractor must notify the following in case of an emergency:

Cablevision 262-4270
or 263-2061
K.P.L. Gas Service Company 383-8650
Kansas Gas & Electric Company 383-8600
Peoples Natural Gas Gas 942-8811
or 1800-303-0357
Southwestern Bell Telephone Company 1-571-2611
City of Wichita Water Department 268-4908
City of Wichita Sewer Department 268-4071
Kansas Gas Service 832-3168
or 832-3167

2. Exist. utilities and their locations, as shown on the plans, represent the best information obtainable for design. Location information has been obtained from the various utility companies and is either from company record drawings or company-provided field locations. The Contractor will be required to work around existing utilities which do not conflict with proposed construction.

3. The Contractor to verify utility locations prior to construction of this project.

4. Utility service and installation shall be coordinated with the respective utility owners. Contacts are:

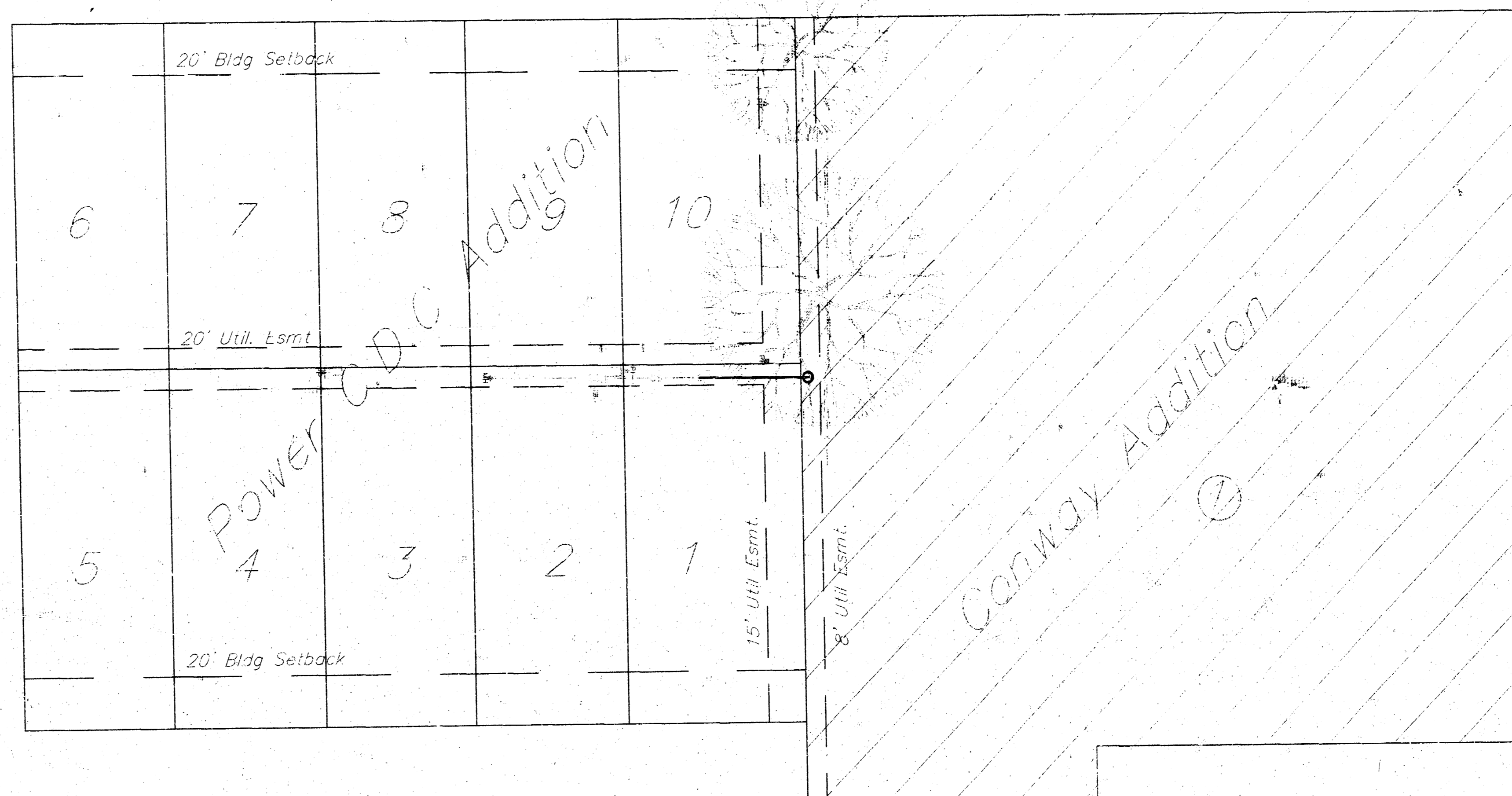
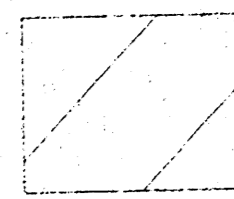
Kansas Gas Service Jim Stoltz 832-3122
K.G.E. Russ Chitwood 261-6251
Wichita Water Bill Perkins 268-4555
Paul Bryant 268-4355
Southwestern Bell Jim Tobin 268-2759

5. All areas disturbed by construction shall be seeded with rye Rebel II Fescure grass at a rate of 350 lbs./acre immediately following construction in that area.

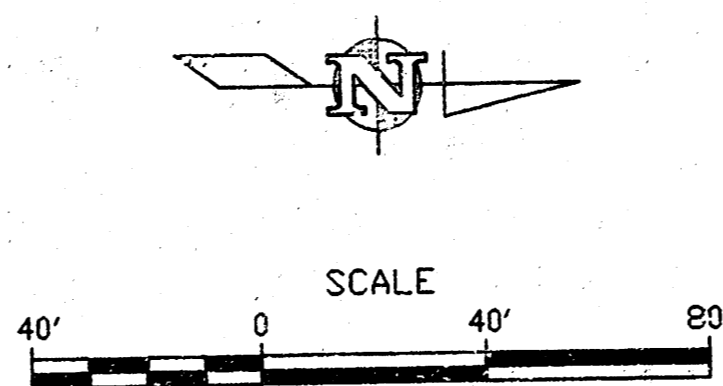
6. Traffic affected by the construction of this project shall be handled in accordance with the latest edition of the Manual on Uniform Traffic Control Devices.

7. All lawn/turf areas disturbed by construction of proposed improvements shall be restored with the same grass/sod as existing. Restoration of disturbed areas shall include, but not be limited to, top soil preparation, seeding, mulch and/or reseeding. All seeding/sodding work shall be in accordance with the City of Wichita standard specifications and the City of Wichita administrative regulation No. AR78 which governs cleanup and replacement following construction. All costs for this work shall be subsidiary to the lump sum price bid for "Site Restoration."

7. Benefit District



AS-BUILT
Date: 1-9-01
Signed: [Signature]

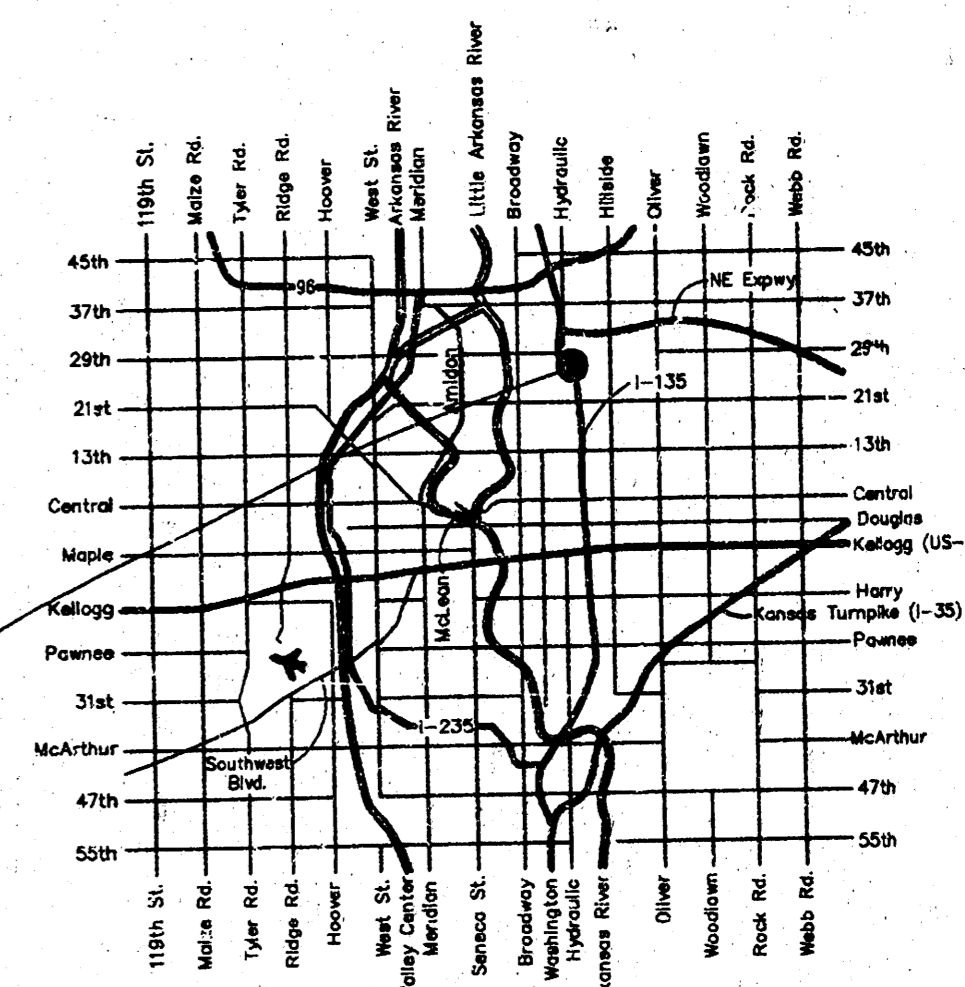


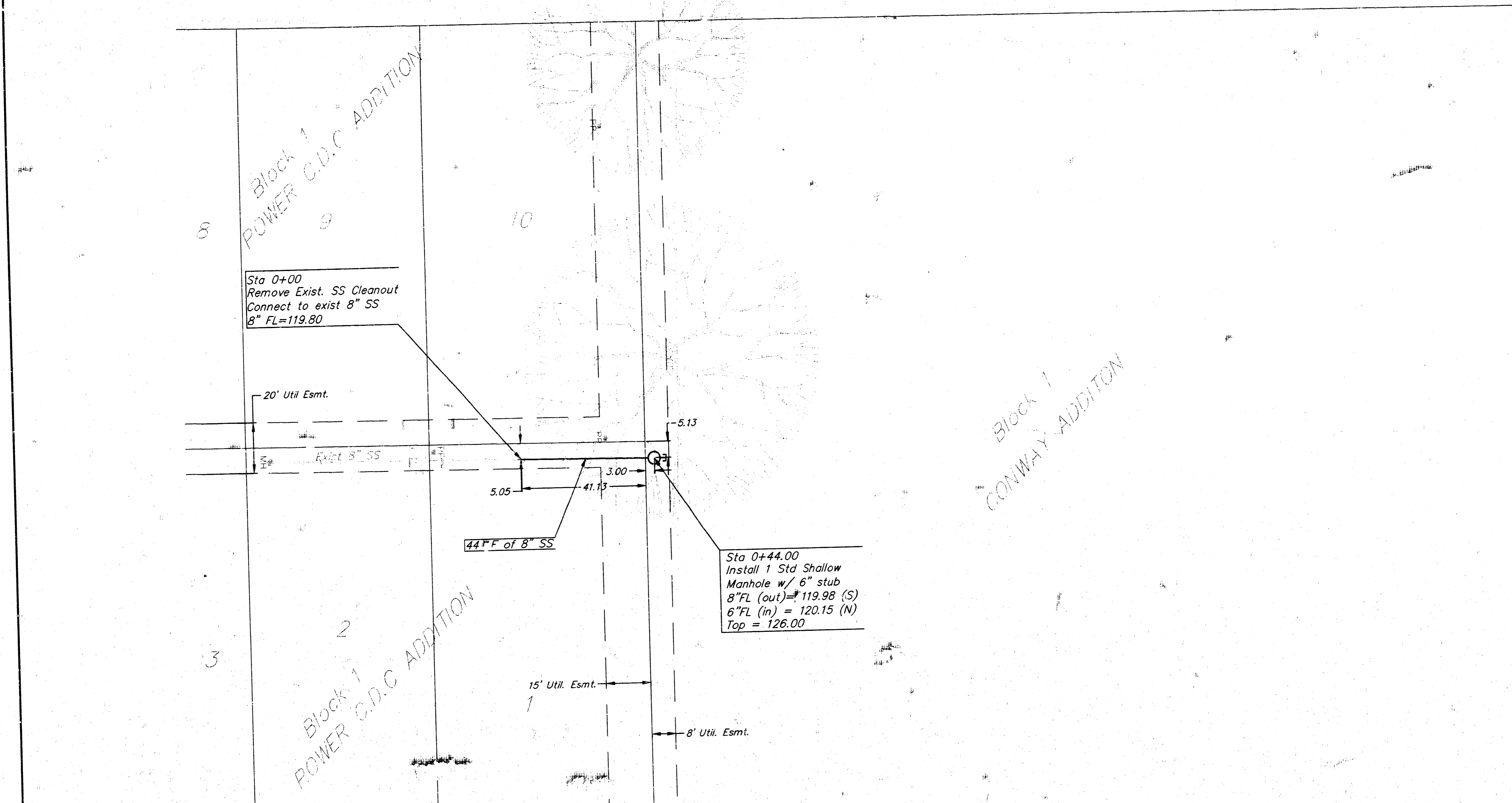
INDEX

- 1 Cover
- 2 Plan and Profile
- 3 Detail

21st St N.

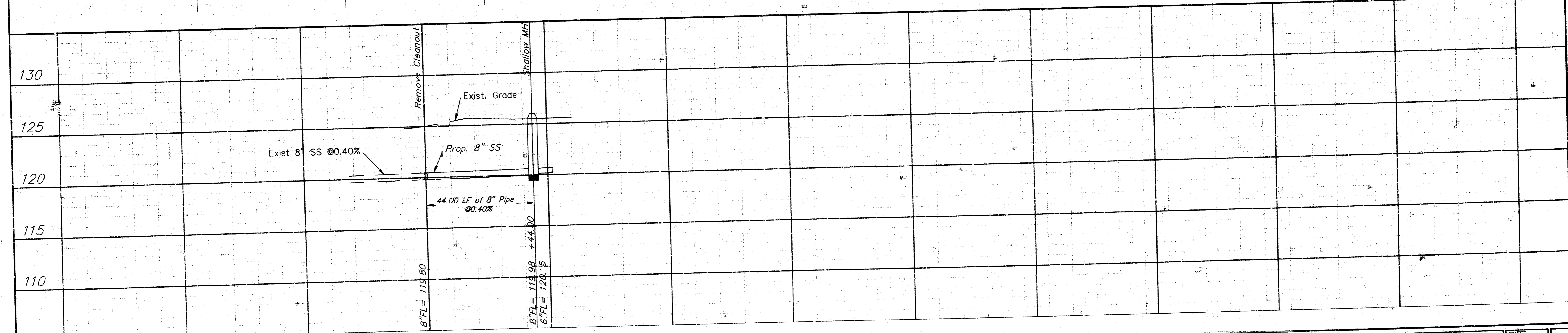
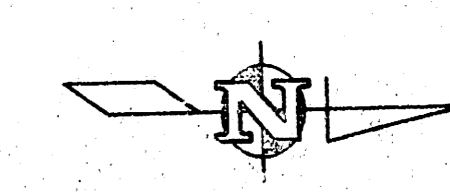
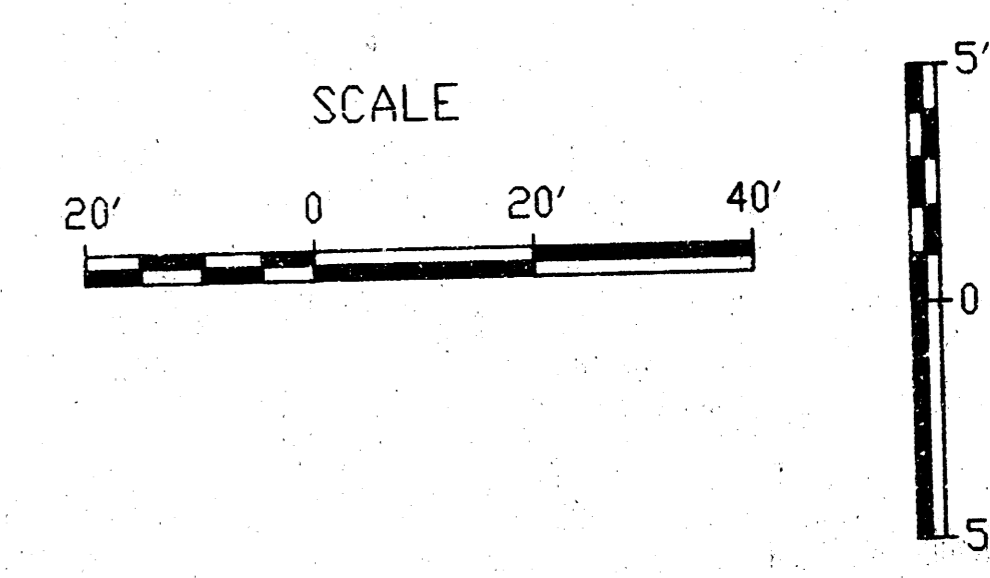
SITE





BENCHMARK

□ Cut on First curb
west of the NW Corner,
Lot 1, Block 1 Power CDC
Addition.
ELEV.=123.66' (City Datum)



	PROJECT NUMBER 1060 FPS (607861)		AW NO 00427	Corway Addition Sewer Extension Wichita Kansas	SHEET 2 OF 2 REV 1/13/00
	DESIGN pb	DRAWN bd	FILE ss1		