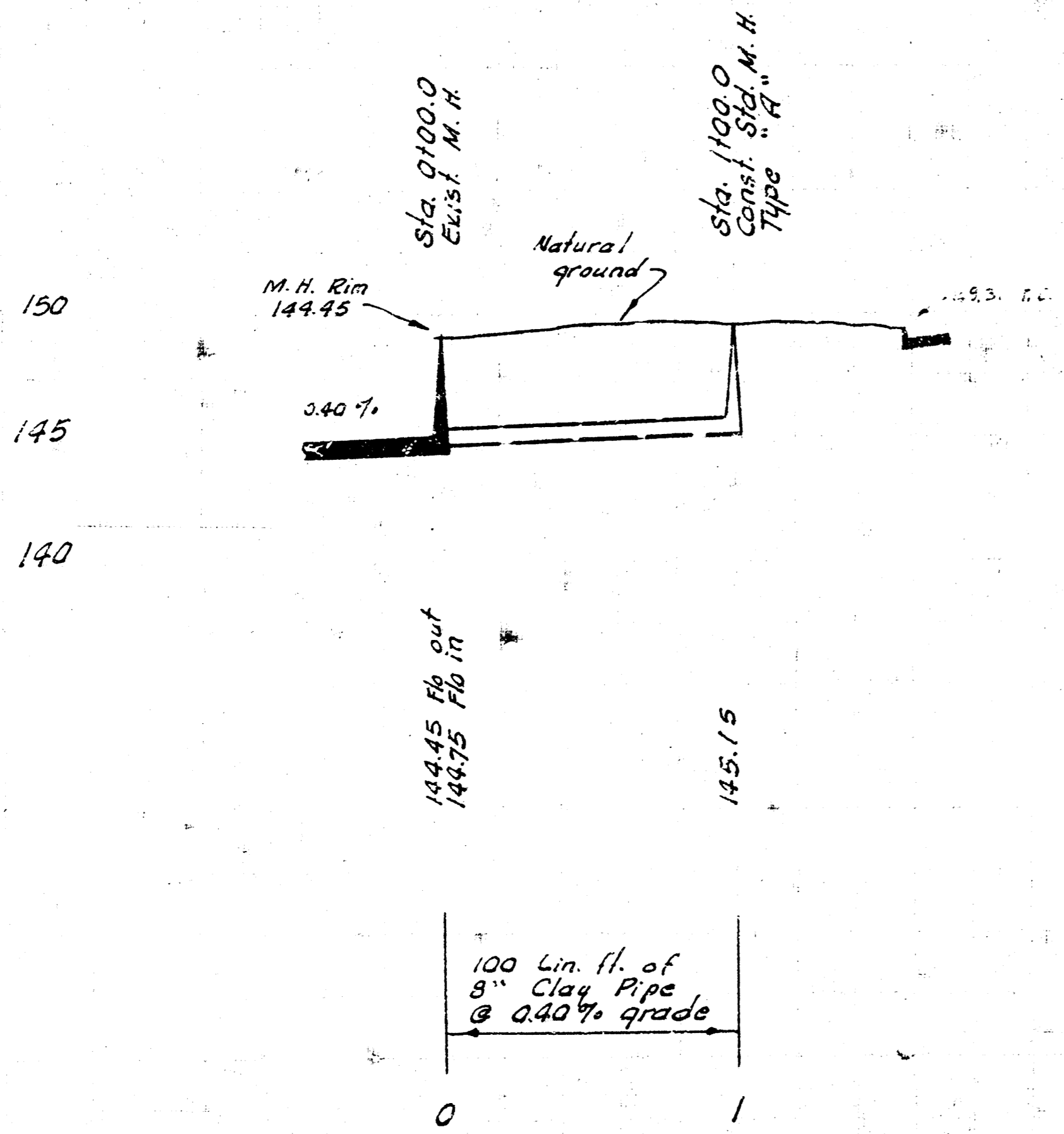


Plan Scale 1" = 40' Horiz.
 Profile Scale 1" = 5' Vert.

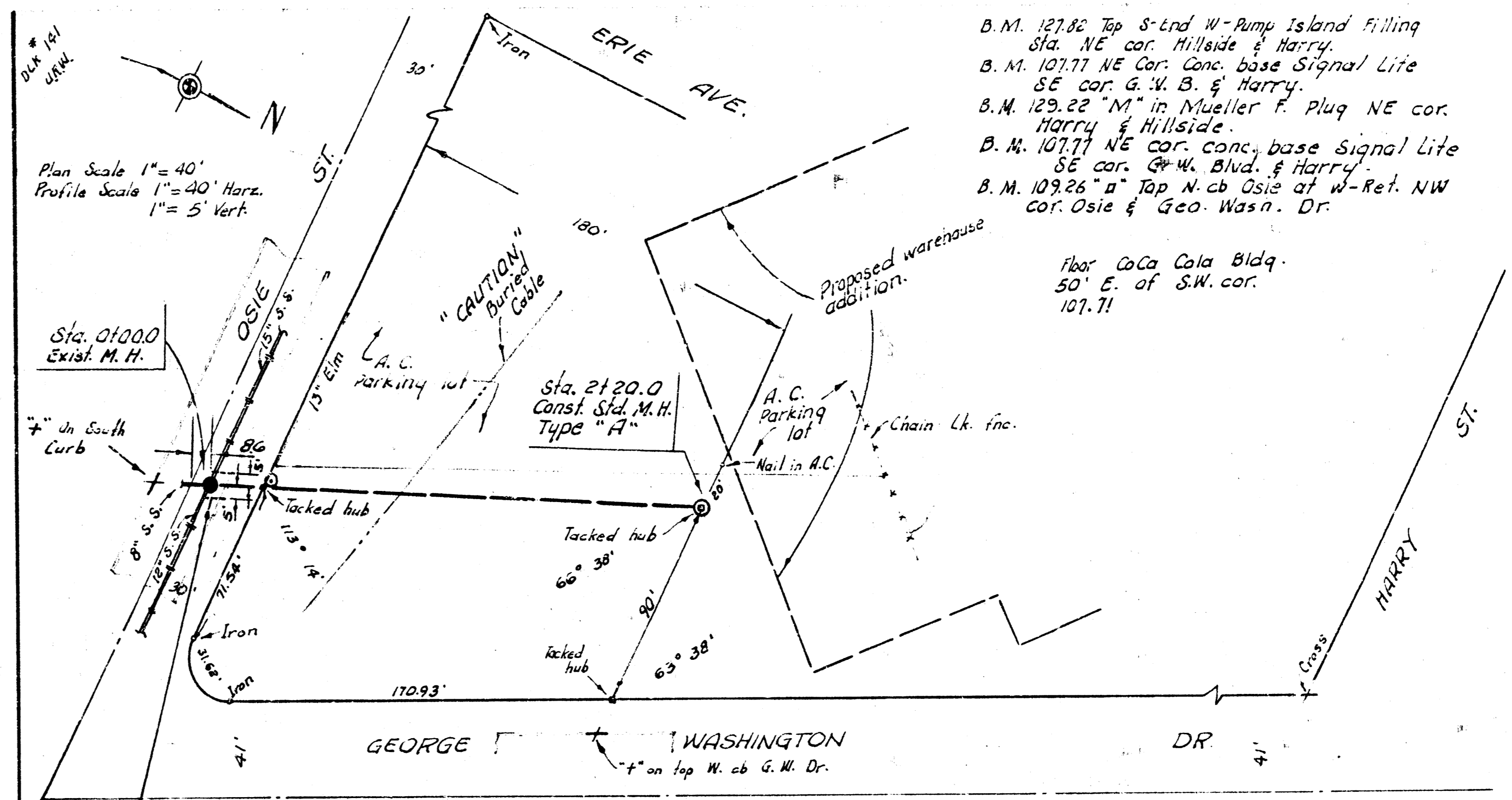
B. M. 151.47 SE cor. conc. porch
 No. # 1266 Cramer

NOTE TO CONTRACTOR
 This project will be constructed under the supervision of the CITY ENGINEER and conforming to the SPECIFICATIONS of the CITY OF WICHITA. The CONTRACTOR will reimburse the City of Wichita for all cost of Engineering, Plans, and Inspection.



100 Lin. ft. of
 8" Clay Pipe
 @ 0.40% grade

EXTENSION TO LAT. C-1-D
 COUNTY ACRES IMPROVEMENT DIST.
 CITY OF WICHITA, KANSAS
 R. W. LINN - CITY ENGINEER
 MARCH 1973, PROJECT NO. BHKBS0314

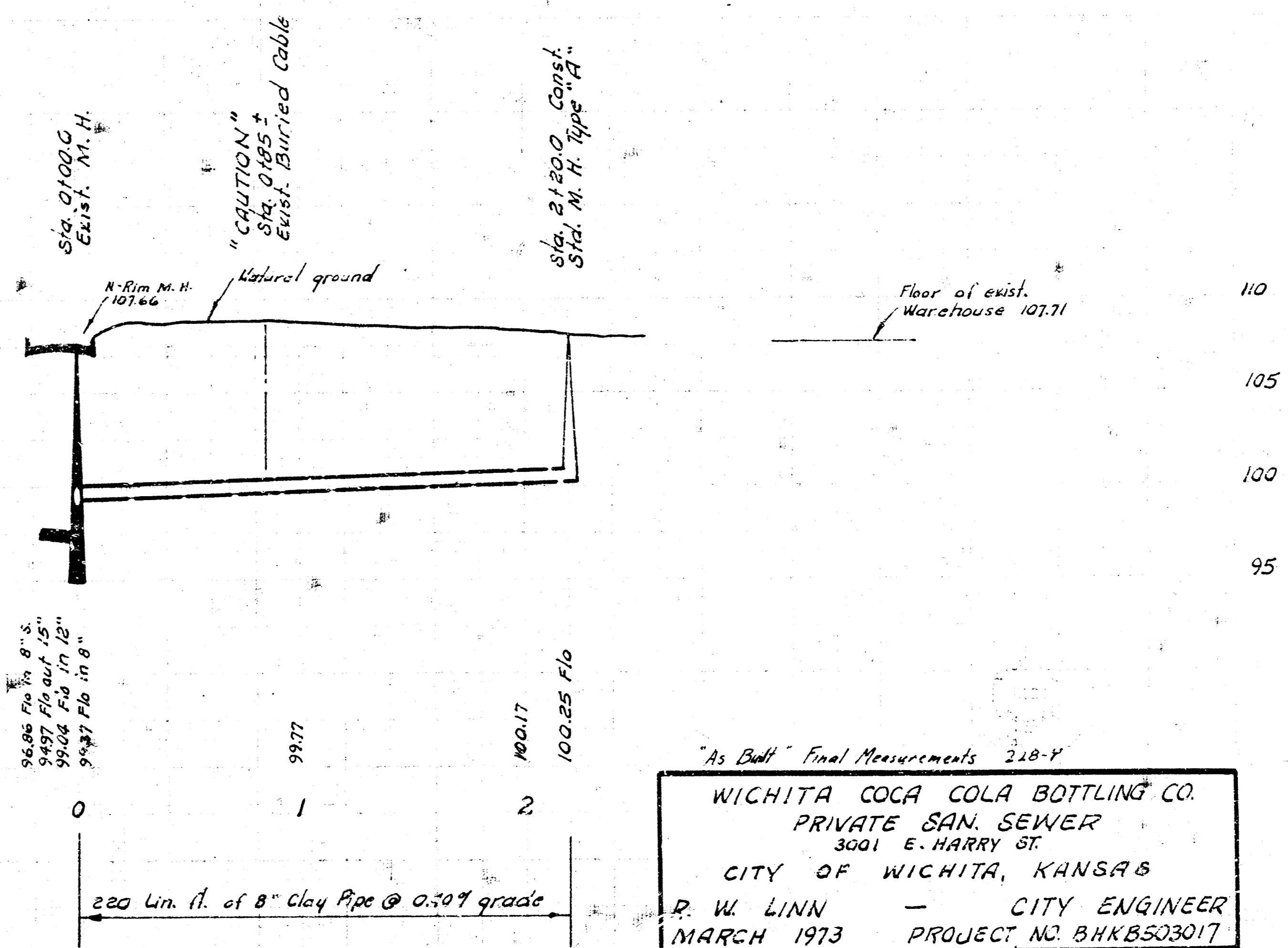


Plan Scale 1" = 40' Horiz.
 Profile Scale 1" = 5' Vert.

B. M. 127.86 Top S-end W-Ramp Island Filling
 Sta. NE cor. Hillside & Harry
 B. M. 107.77 NE Cor. Conc. base Signal Life
 SE cor. G. W. B. & Harry.
 B. M. 129.22 "M" in Mueller P. Plug NE cor.
 Harry & Hillside.
 B. M. 107.77 NE cor. conc. base Signal Life
 SE cor. G. W. Blvd. & Harry
 B. M. 109.26 "M" Top W. ab. Osie of W-Ret. NW
 cor. Osie & Geo. Wash. Dr.

NOTE TO CONTRACTOR
 This project will be constructed under the supervision of the CITY ENGINEER and conforming to the SPECIFICATIONS of the CITY OF WICHITA. The CONTRACTOR will reimburse the City of Wichita for all cost of Engineering, Plans, and Inspection.

NOTE:
 Saw joint
 Replace pavement to
 City of Wichita specifications.



220 Lin. ft. of 8" clay Pipe @ 0.20% grade

"As Built" Final Measurements 218-V
 WICHITA COCA COLA BOTTLING CO.
 PRIVATE SAN. SEWER
 3001 E. HARRY ST.
 CITY OF WICHITA, KANSAS
 R. W. LINN - CITY ENGINEER
 MARCH 1973 PROJECT NO. BHKBS03017