

42877

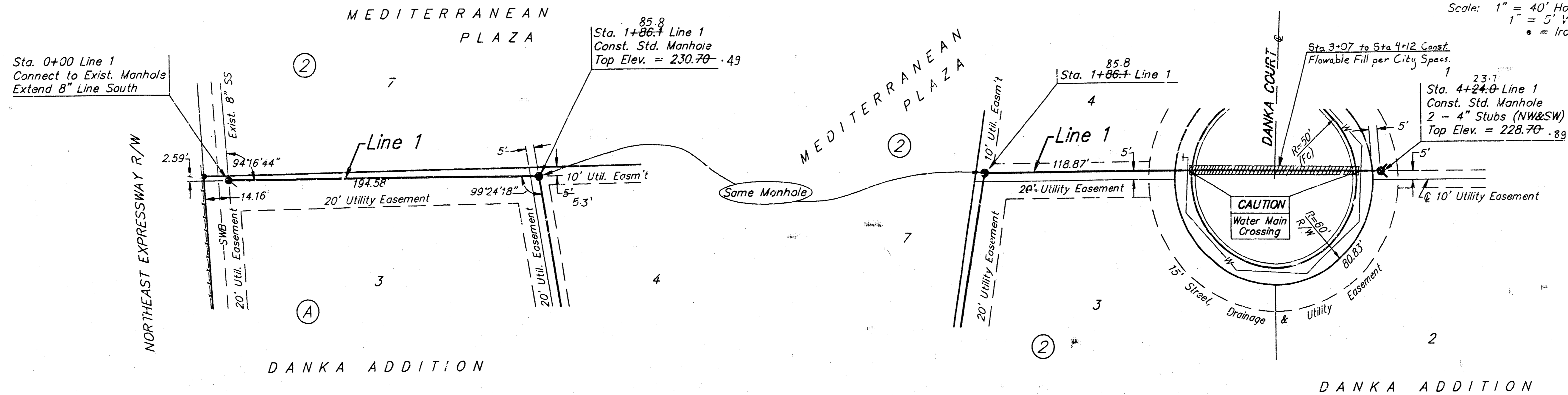
BENCHMARKS

"□" Cut Top of Curb Located 1' West of Curb Inlet and 15' North of N.E. Corner, Lot 5, Block 1 Mediterranean Plaza.
Elevation = 225.94 (City Datum)

"□" Cut Top of North Curb On 32nd Street North, Between Lots 4 & 5, Block 2, Mediterranean Plaza.
Elevation = 229.75 (City Datum)

Scale: 1" = 40' Horizontal
1" = 5' Vertical
• = Iron

Scale: 1" = 40' Horizontal
1" = 5' Vertical
• = Iron



APPROVED AS NOTED
BY CITY ENGINEER OF WICHITA

Sanitary Sewers 12/16/93 VRH

Storm Sewers _____

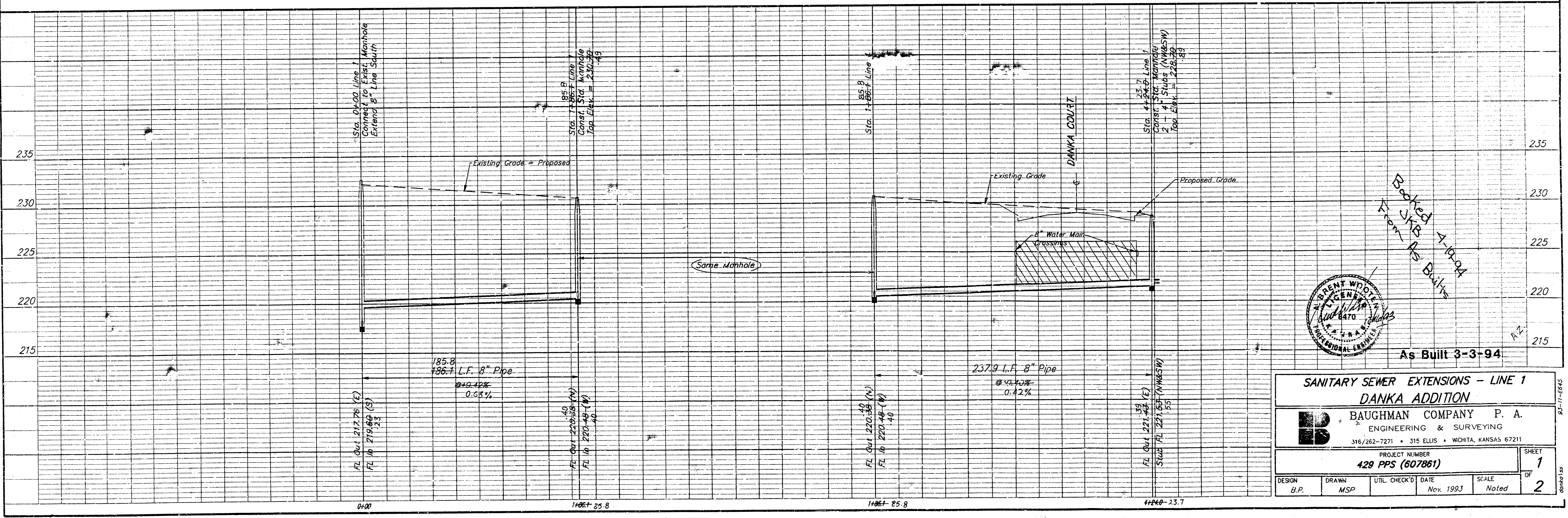
Driveway Approaches _____

Water Mains _____

Paving _____

NOTE TO CONTRACTORS

Inspection and testing for this project is to be provided by a Licensed Consulting Engineering Firm under contract with the Owner/Developer. Said inspection to be in accordance with the City of Wichita standard construction engineering practices and certified by a Licensed Professional Engineer. No work shall be performed in dedicated easements or public right-of-way by the Contractor without such inspection nor shall any work be commenced without written authorization by the City Engineer.



Booked 4-10-94
From AS Bults

As Built 3-3-94

**SANITARY SEWER EXTENSIONS - LINE 1
DANKA ADDITION**

BAUGHMAN COMPANY P. A.
ENGINEERING & SURVEYING
316/262-7271 • 315 ELLIS • WICHITA, KANSAS 67211

PROJECT NUMBER
428 PPS (607861)

DESIGN: B.P. DRAWN: MSP UTIL CHECK'D: DATE: Nov. 1993 SCALE: Noted

SHEET 1 OF 2

607