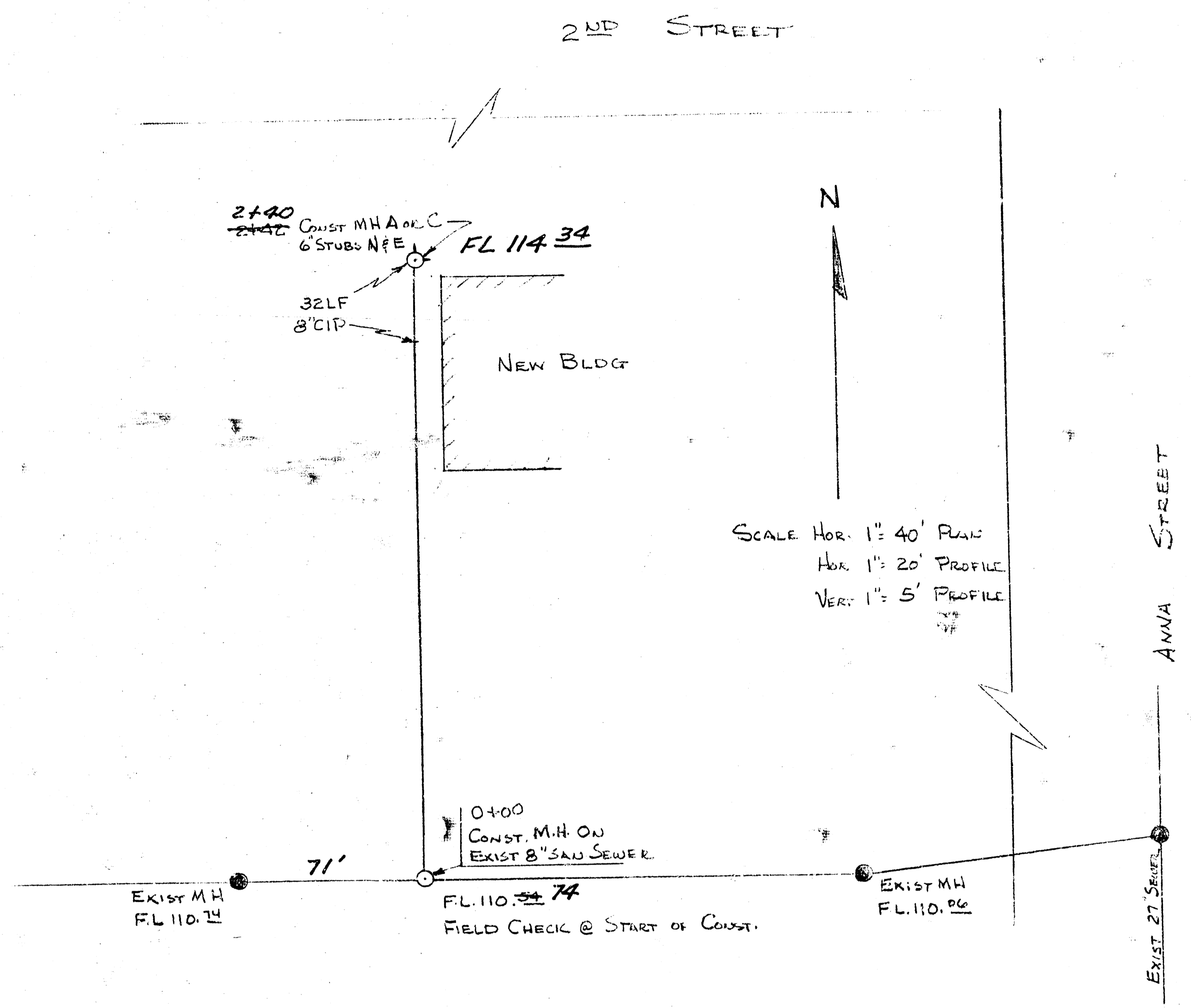


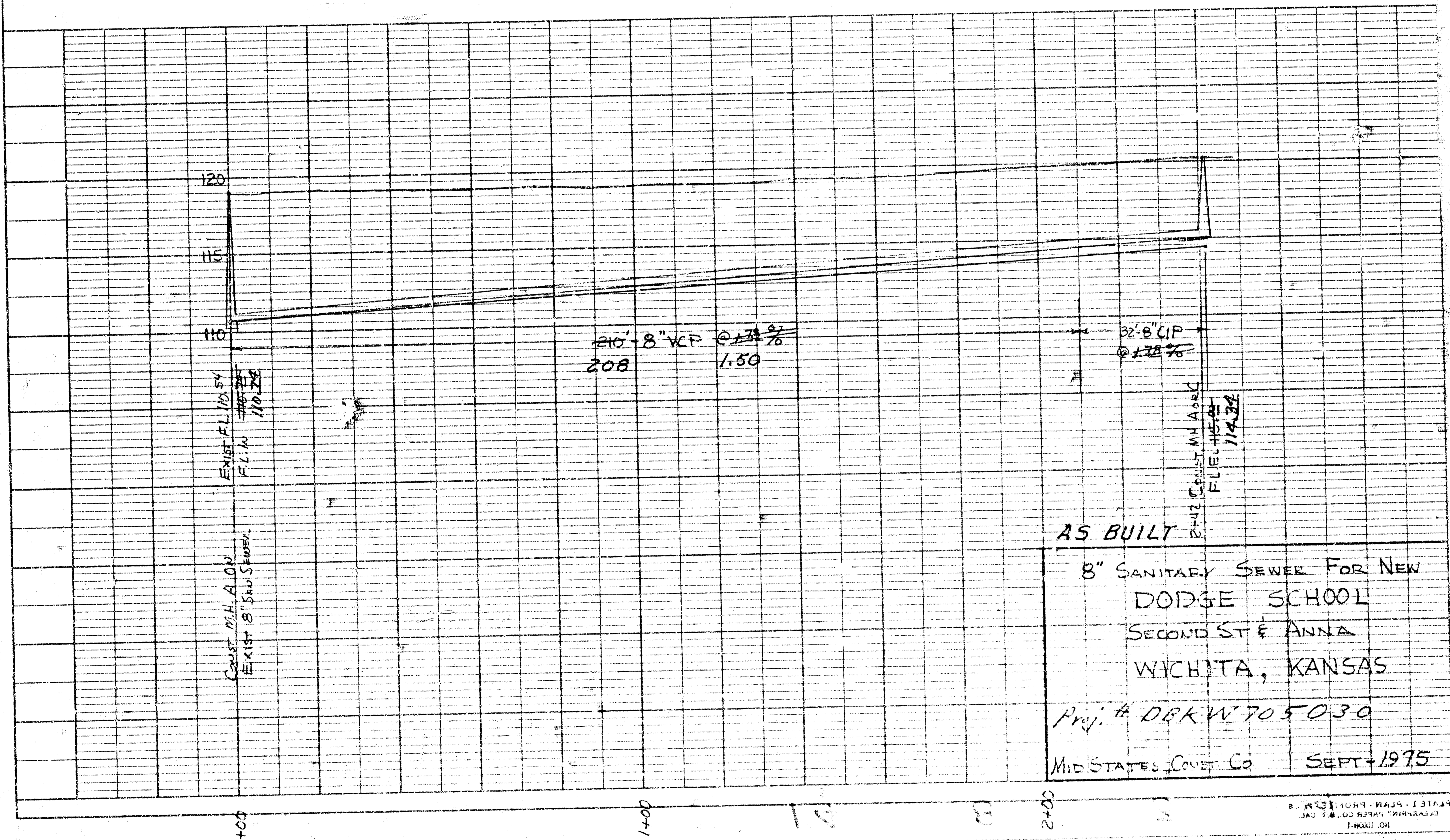
9-22-75  
 APPROVED AS NOTED  
 By CITY ENGINEER OF WICHITA  
 Sanitary Sewers: D.E.S.  
 Storm Sewers: \_\_\_\_\_  
 Driveway Approaches: \_\_\_\_\_

**NOTE TO CONTRACTOR**  
 This project will be constructed under the supervision of the CITY ENGINEER and conforming to the SPECIFICATIONS of the CITY OF WICHITA. The CONTRACTOR will reimburse the City of Wichita for all costs of Engineering, Plans, and Inspection.

**WYES**  
 0+59 E 6"  
 1+10 W 4"  
 1+67 E 6"  
 2+05 W 6"



SCALE HOR. 1" = 40' PLAN  
 HOR. 1" = 20' PROFILE  
 VERT. 1" = 5' PROFILE



**AS BUILT**  
 8" SANITARY SEWER FOR NEW  
 DODGE SCHOOL  
 SECOND ST & ANNA  
 WICHITA, KANSAS  
 Proj. # DBK W 705030  
 MID STATES CONST CO SEPT 1975

ENGINEER: D. E. S. JUN 19 1975