

# SANITARY SEWER

TO SERVE

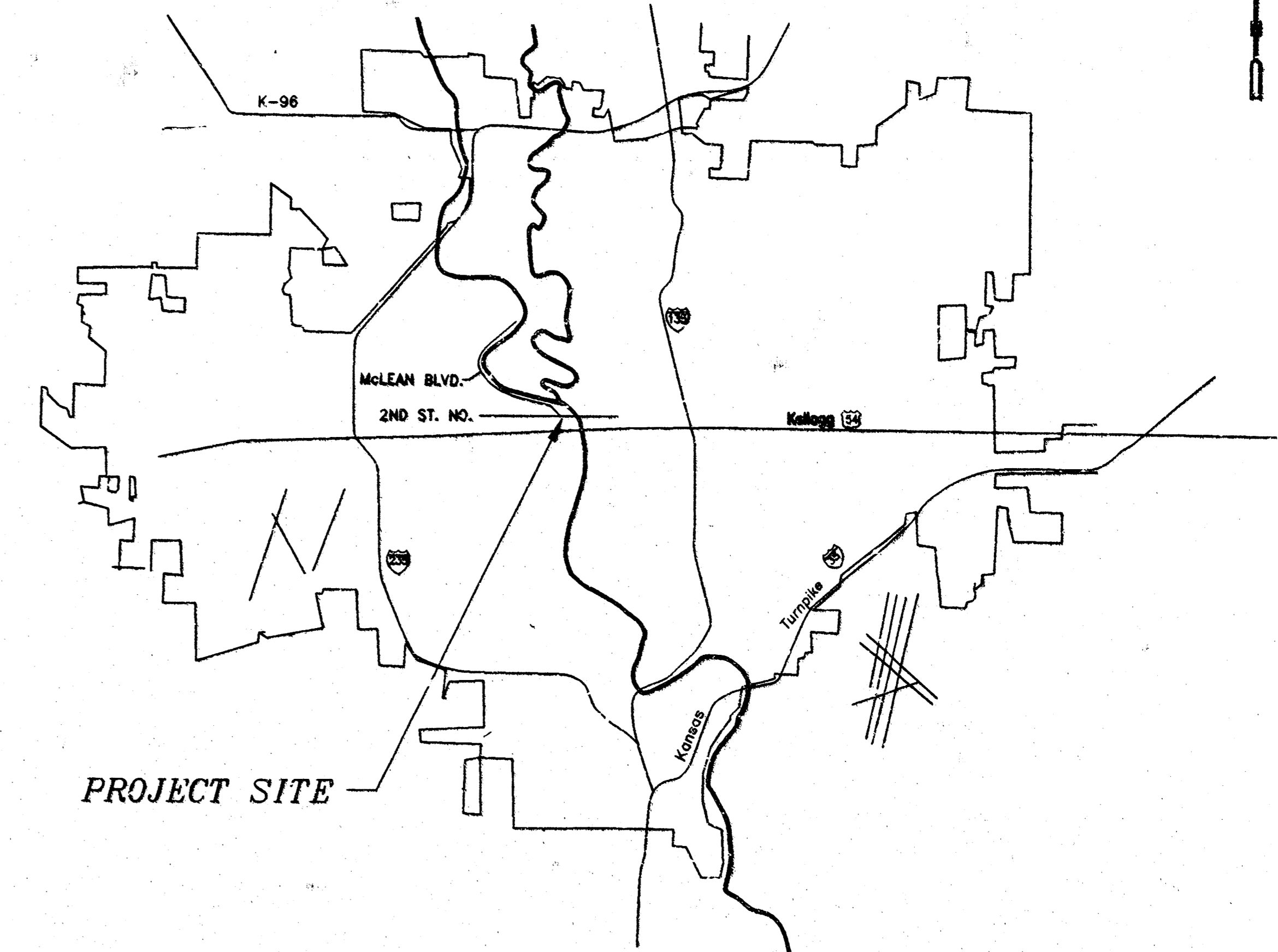
LOT 1, BLOCK 1,  
EXPLORATION PLACE  
WICHITA, KANSAS

CITY OF WICHITA, KANSAS  
M.E. LINDEBAK CITY ENGINEER

PRIVATE PROJECT NO. 746PPS  
INDEX NO. 607861

Oct. 1997

AS BUILT: 5/7/99



APPROVED AS NOTED  
BY CITY ENGINEER OF WICHITA

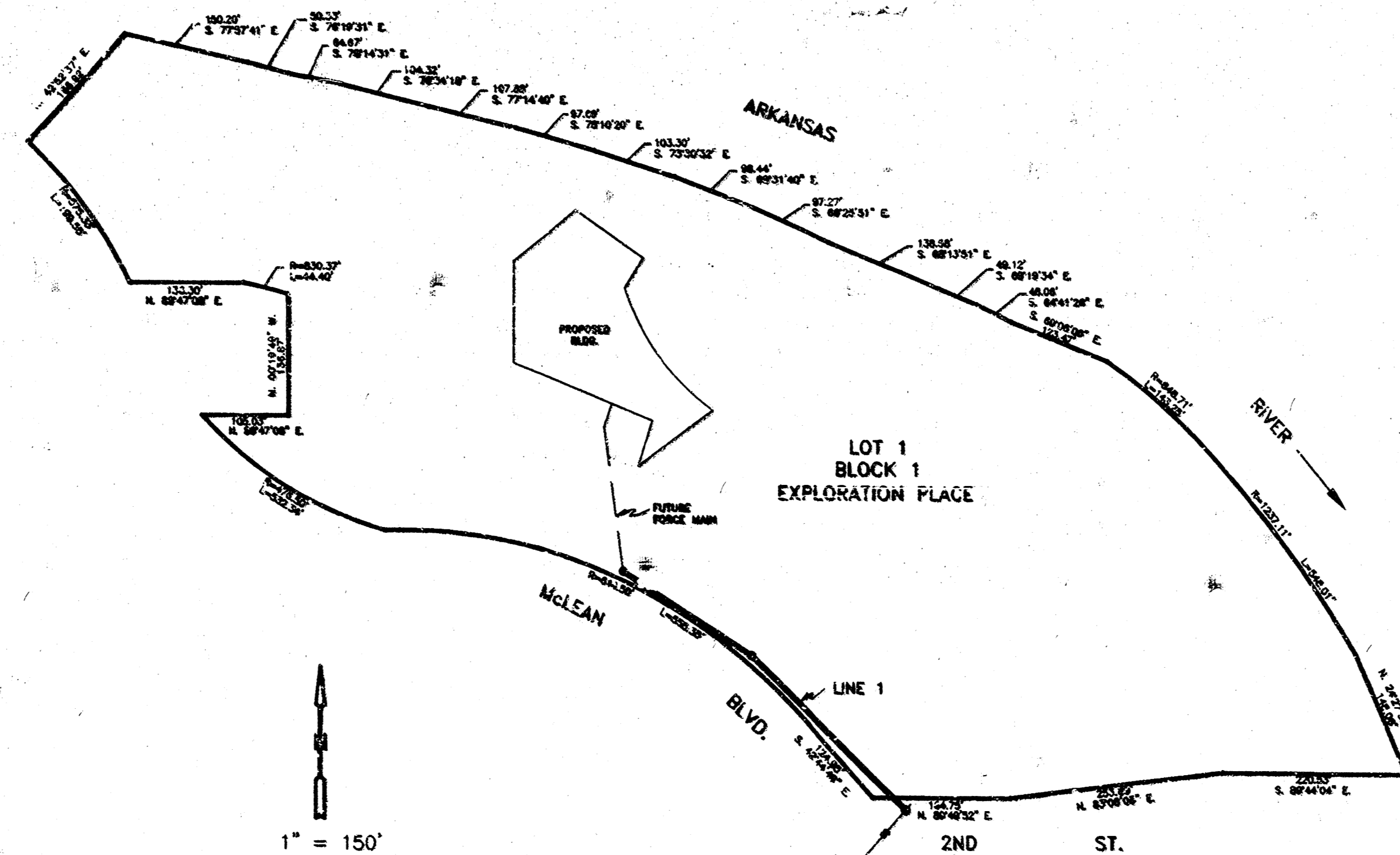
Sanitary Sewer \_\_\_\_\_  
Storm Sewers \_\_\_\_\_  
Driveway Approaches \_\_\_\_\_  
Water Mains \_\_\_\_\_  
Paving \_\_\_\_\_

**NOTE TO CONTRACTOR**

INSPECTION AND TESTING FOR THIS PROJECT IS TO BE PROVIDED BY A LICENSED CONSULTING ENGINEERING FIRM UNDER CONTRACT WITH THE OWNER/DEVELOPER. SAID INSPECTION IS TO BE IN ACCORDANCE WITH THE CITY OF WICHITA STANDARD CONSTRUCTION ENGINEERING PRACTICES AND CERTIFIED BY A LICENSED PROFESSIONAL ENGINEER. NO WORK SHALL BE PERFORMED IN DEDICATED EASEMENTS OR THE PUBLIC RIGHT-OF-WAY BY THE CONTRACTOR WITHOUT SUCH INSPECTION NOR SHALL ANY WORK BE COMPLETED IN DEDICATED EASEMENTS OR PUBLIC RIGHT-OF-WAY WITHOUT WRITTEN AUTHORIZATION BY THE CITY ENGINEER.

**NOTES**

- THE CONTRACTOR WILL BE REQUIRED TO PROVIDE ADVANCE NOTICE OF TWENTY-FOUR (24) HOURS TO UTILITY COMPANIES PRIOR TO STARTING ANY EXCAVATION AS FOLLOWS:  
KANSAS ONE-CALL 687-2470  
THE CONTRACTOR MUST NOTIFY THE FOLLOWING IN CASE OF EMERGENCY:  
CABLEVISION 262-4270 OR 263-2061  
KPL GAS SERVICE COMPANY 263-7511  
KANSAS GAS & ELECTRIC 264-1141  
PEOPLES NATURAL GAS 942-8350 OR 263-8161  
SOUTHWESTERN BELL TELEPHONE 1-571-2611  
CITY OF WICHITA WATER DEPT. 269-4908  
CITY OF WICHITA SEWER MAINTENANCE 268-4071
- THE CONTRACTOR SHALL BE RESPONSIBLE FOR PROPERTY IRONS. THE CONTRACTOR WILL BE REQUIRED TO RE-ESTABLISH ANY PROPERTY IRONS WHICH ARE DAMAGED OR DESTROYED BY HIS CONSTRUCTION OPERATIONS. SUCH IRONS SHALL BE RE-ESTABLISHED BY A LICENSED LAND SURVEYOR IN ACCORDANCE WITH STATE LAWS.
- UNLESS OTHERWISE SPECIFIED ON THE PLANS, MANHOLES MAY BE TYPE "P", "C", OR "D" MANHOLES. MANHOLES SHALL BE CONSTRUCTED IN ACCORDANCE WITH THE STANDARD SPECIFICATIONS AND THE STANDARD DETAIL DRAWINGS.
- TRAFFIC WILL NOT BE AFFECTED IN THIS AREA OF CONSTRUCTION.
- CONTRACTOR SHALL PROVIDE POSITIVE DRAINAGE AWAY FROM ALL MANHOLE COVERS.
- CONTRACTOR SHALL GRADE THE SANITARY SEWER ALIGNMENT TO THE PROFILE AND ELEVATION SHOWN ON THE EASEMENT GRADING PLAN.
- ALL DISTURBED AREAS TO BE RESEEDING USING TEMPORARY RYE GRASS AT A RATE OF 4 LBS. PER 1000 SQ. FT. WITHIN 14 DAYS UPON PROJECT COMPLETION. CONTRACTOR SHALL PREPARE GROUND PER CITY SPECIFICATIONS.
- EXISTING UTILITIES AND THEIR LOCATION, AS SHOWN ON THE PLANS, REPRESENT THE BEST INFORMATION OBTAINABLE FOR DESIGN. THE CONTRACTOR WILL BE REQUIRED TO WORK AROUND EXISTING UTILITIES WITHIN THE RIGHT-OF-WAY WHICH DO NOT CONFLICT WITH PROPOSED CONSTRUCTION.



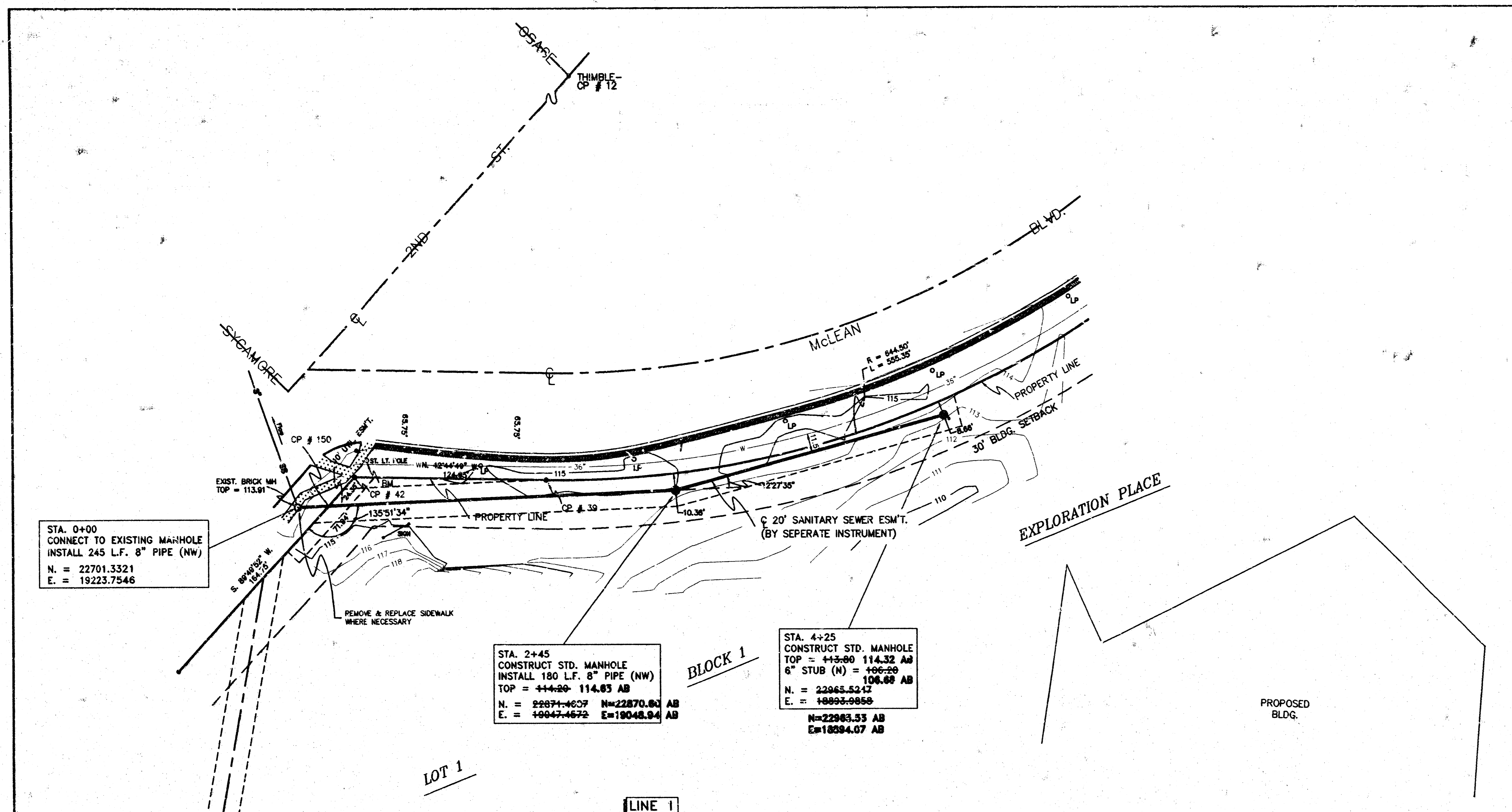
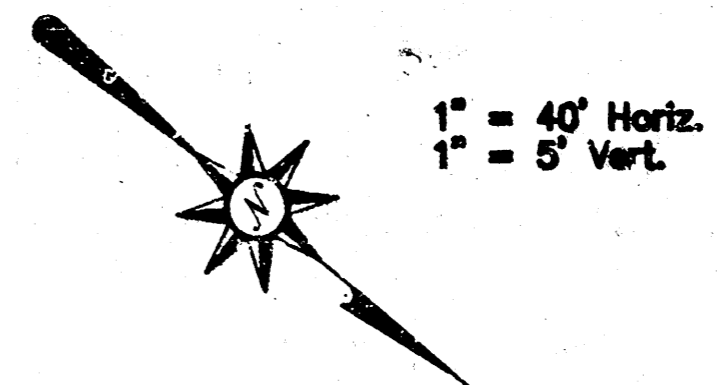
- INDEX**
- Cover Sheet
  - Manhole Standards
  - Plat
  - Plan & Profile

Booked  
7-20-00  
P-135  
RDL

IMPROVEMENT DISTRICT

MOEHRING & ASSOCIATES  
CONSULTING ENGINEERS  
WICHITA

MAY 07 08 00:13 1999



STA. 0+00  
CONNECT TO EXISTING MANHOLE  
INSTALL 245 L.F. 8" PIPE (NW)  
N. = 22701.3321  
E. = 19223.7546

STA. 2+45  
CONSTRUCT STD. MANHOLE  
INSTALL 180 L.F. 8" PIPE (NW)  
TOP = 114.32 AB  
N. = 22871.4607 E. = 19047.4672  
N = 22870.80 AB E = 19048.94 AB

STA. 4+25  
CONSTRUCT STD. MANHOLE  
TOP = 114.32 AB  
6" STUB (N) = 106.88 AB  
N. = 22965.5242 E. = 18992.9856  
N = 22965.53 AB E = 18994.07 AB

CONTROL POINT COORDINATES

PT #	N. COORD.	E. COORD.	ELEV.
12 (THIMBLE)	22846.2070	18461.1850	---
39 (CAPPED IRON)	22806.9570	19100.2390	---
42 (CAPPED IRON)	22715.2000	19185.0490	114.17
150	22715.2718	19209.3989	---

CONFORMS TO M.K.E.C. SITE CONTROL COORDINATES, AS REFERENCED ON SHEET C1.0 OF EXPLORATION PLACE CONSTRUCTION PLANS.

BENCHMARK

CHISELED SQUARE ON N.E. COR. OF SIGNAL POLE  
BASE AT THE N.E. COR. OF 2ND & McLEAN.  
ELEV. = 114.10 CITY DATUM.

AS BUILT: 5/7/99

