

BENCH MARK

R.R. epke in e. side power pole,
2.6' S. of S.E. cor. Graham-Casado
Addition; elev. 138.57

GENERAL NOTES

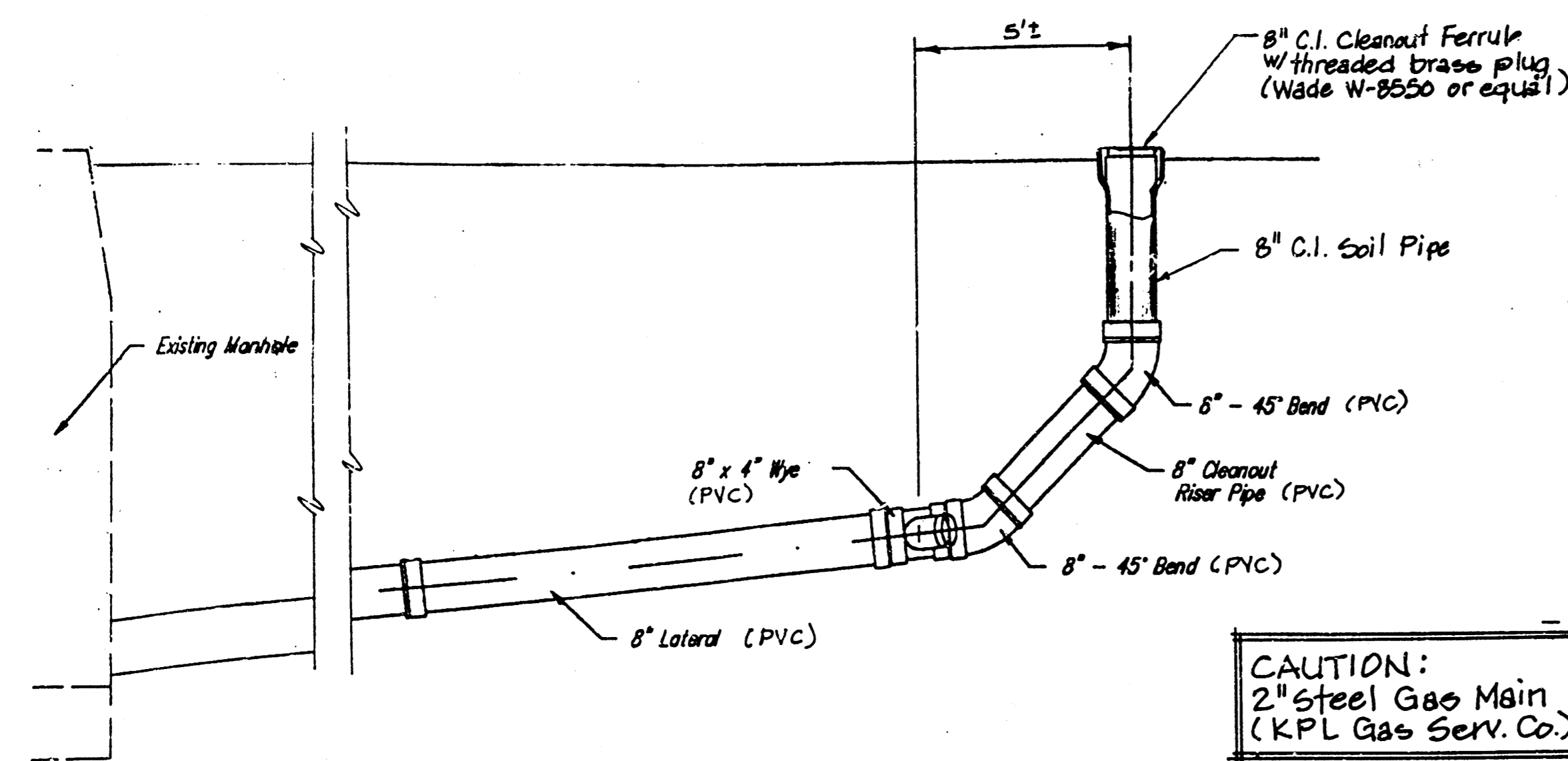
1. The Contractor shall be responsible for preserving property corner irons. The Contractor will be required to re-establish any property irons which are disturbed by his construction operations. Such irons shall be re-established by a licensed land surveyor in accordance with state laws.
2. The Contractor shall verify the locations of underground utilities by contacting One-Call at 687-2470 a minimum of 48 hours prior to any excavation.
3. The Contractor shall make arrangements with the Wichita Water Department for relocating the water meter and service line as indicated on the plan, prior to beginning work.
4. Traffic will not be affected by construction of this project.
5. Construction of this project shall comply with the latest revision of the City of Wichita PROCEDURE FOR CONSTRUCTION OF PUBLIC WORKS PROJECTS BY PRIVATE CONTRACT.

APPROVED AS NOTED

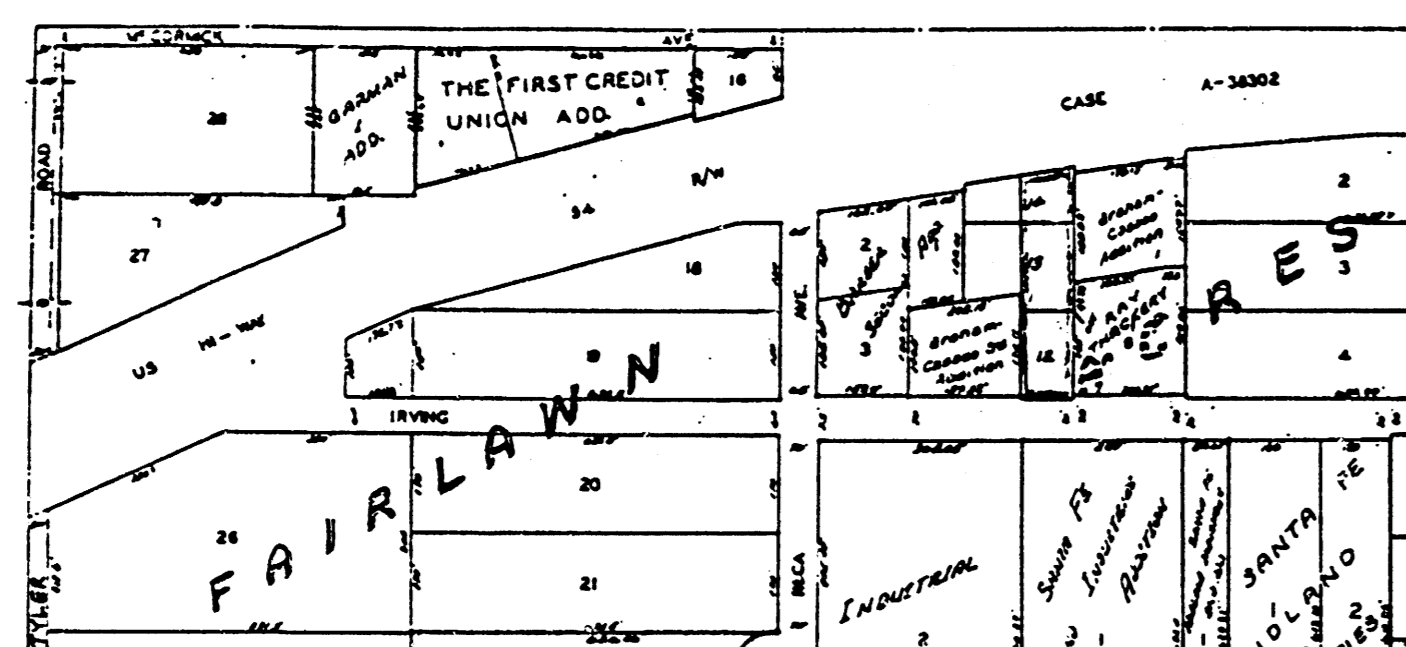
By CITY ENGINEER OF WICHITA
Sanitary Sewers VRH 1/30/90
Storm Sewers _____
Driveway Approaches _____
Water Mains _____
Paving _____

NOTE TO CONTRACTOR

INSPECTION AND TESTING FOR THIS PROJECT IS TO BE PROVIDED BY A LICENSED CONSULTING ENGINEERING FIRM UNDER CONTRACT WITH THE OWNER/DEVELOPER. SAID INSPECTION TO BE IN ACCORDANCE WITH THE CITY OF WICHITA STANDARD CONSTRUCTION ENGINEERING PRACTICES AND CERTIFIED BY A LICENSED PROFESSIONAL ENGINEER. NO WORK SHALL BE PERFORMED IN DEDICATED EASEMENTS OR PUBLIC RIGHT-OF-WAY BY THE CONTRACTOR WITHOUT SUCH INSPECTION NOR SHALL ANY WORK BE COMMENCED WITHOUT WRITTEN AUTHORIZATION BY THE CITY ENGINEER.



CLEANOUT RISER DETAIL



LOCATION MAP

CAUTION:
2" steel Gas Main
(K.P.L. Gas Serv. Co.)

Sta. 0+00 Connect to existing brick manhole. Reshape invert as necessary. Top elev. 138.23

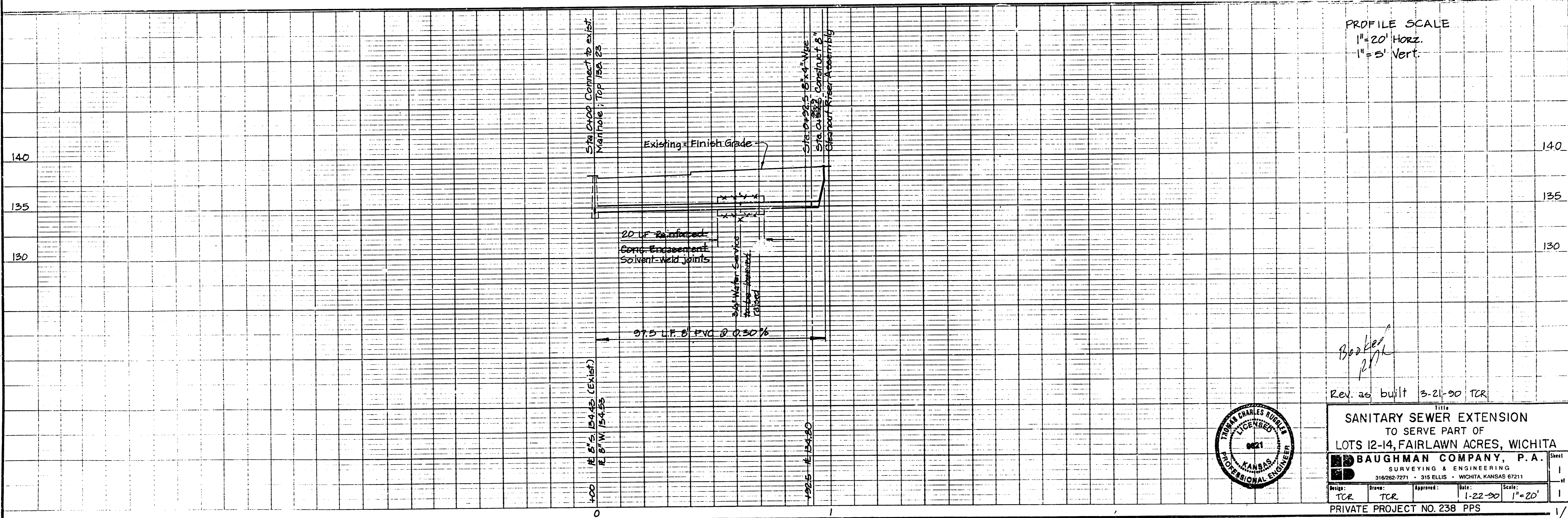
Water meter to be re-located and service line raised ~~removed~~ by Water Dept. to clear sewer construction. Contractor shall contact Bruce Cluck @ 268-4908 to make arrangements.

RAY THACKERY ADDITION

Sta. 0+22.5 Construct 8" Cleanout Riser Assembly. Top elev. 139.2 (See detail) 139.2

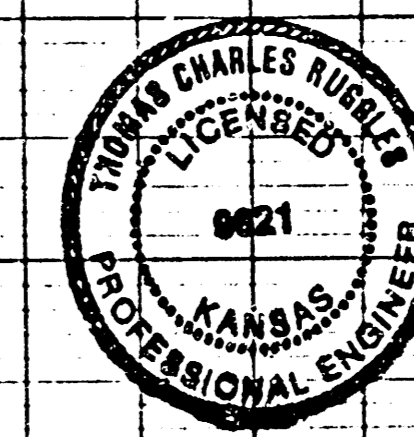
Construct reinf. concrete encasement 10' min. each way from water line.

PART OF LOT 12 FAIRLAWN ACRES



PROFILE SCALE
1" = 20' Horiz.
1" = 5' Vert.

PROFILE
NOTE BOOK GRAVIS CHECKED
NO. BA46
EXCAVATION MODIFICATIONS CHECKED



Rev. as built 3-21-90 TCR

SANITARY SEWER EXTENSION
TO SERVE PART OF
LOTS 12-14, FAIRLAWN ACRES, WICHITA

BAUGHMAN COMPANY, P.A.
SURVEYING & ENGINEERING
316262-7271 • 315 ELLIS • WICHITA, KANSAS 67211

Design: TCR Drawn: TCR Approved: [Signature] Date: 1-22-90 Scale: 1" = 20'

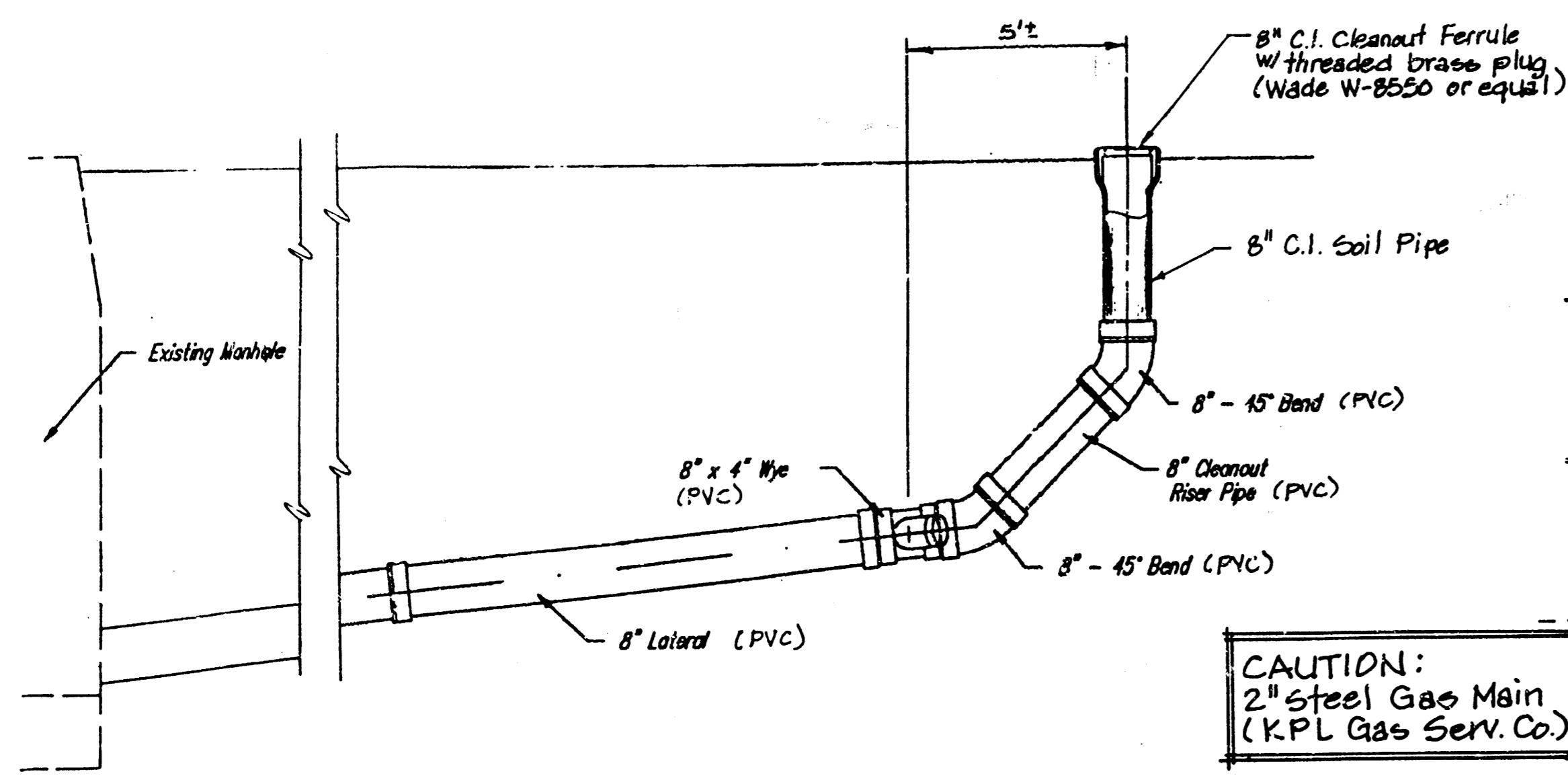
PRIVATE PROJECT NO. 238 PPS

BENCH MARK

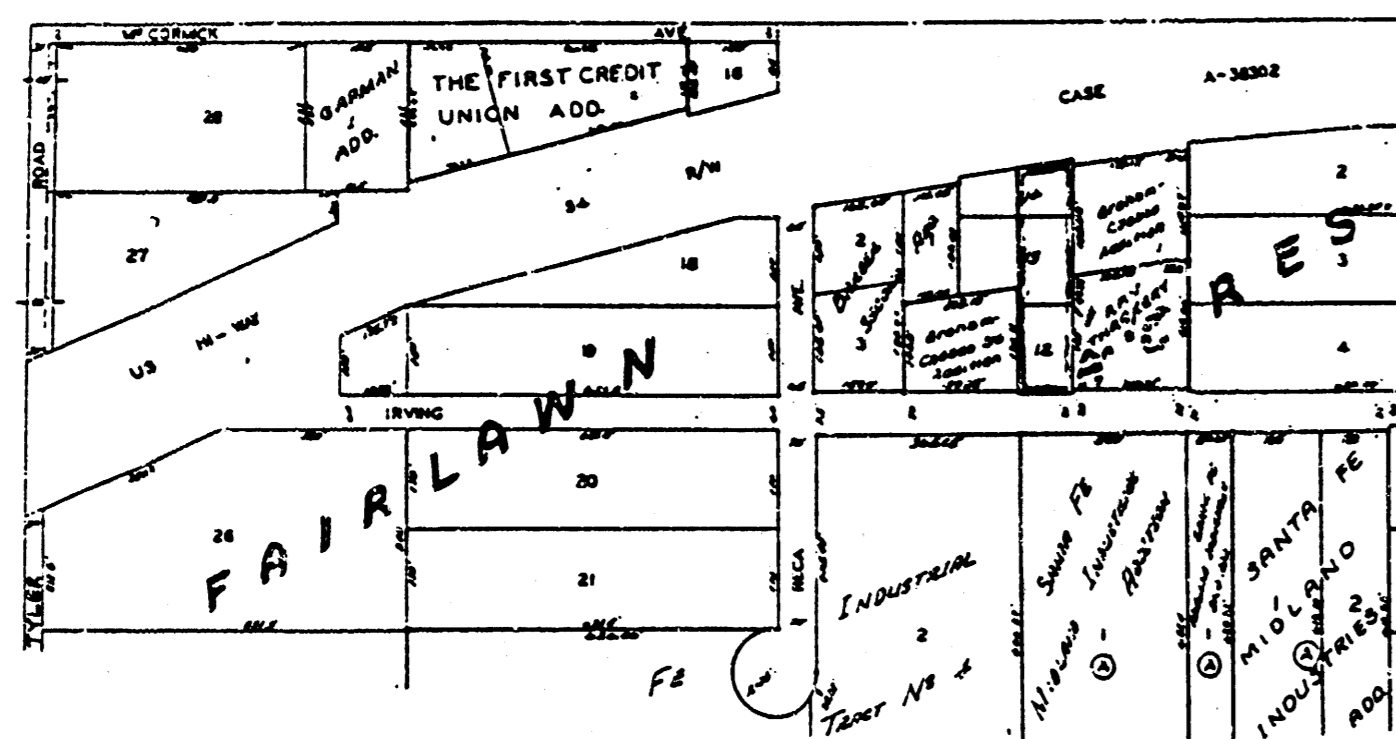
R.R. epike in e. side power pole,
3.6' S. of S.E. cor. Graham-Casado
Addition; elev. 136.57

GENERAL NOTES

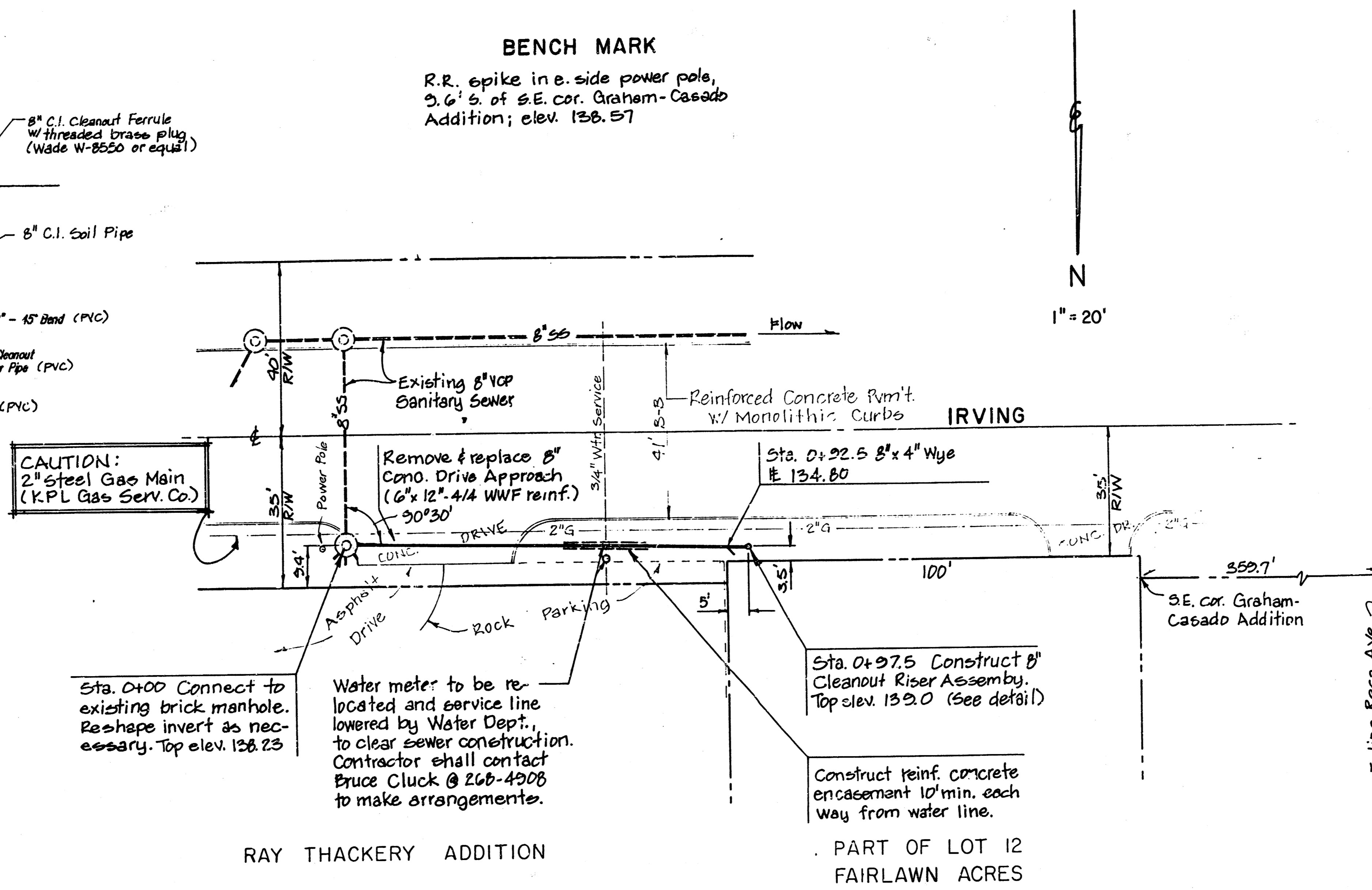
1. The Contractor shall be responsible for preserving property corner irons. The Contractor will be required to re-establish any property irons which are disturbed by his construction operations. Such irons shall be re-established by a licensed land surveyor in accordance with state laws.
2. The Contractor shall verify the locations of underground utilities by contacting One-Call at 687-2470 a minimum of 48 hours prior to any excavation.
3. The Contractor shall make arrangements with the Wichita Water Department for relocating the water meter and service line as indicated on the plan, prior to beginning work.
4. Traffic will not be affected by construction of this project.
5. Construction of this project shall comply with the latest revision of the City of Wichita PROCEDURE FOR CONSTRUCTION OF PUBLIC WORKS PROJECTS BY PRIVATE CONTRACT.



CLEANOUT RISER DETAIL



LOCATION MAP



RAY THACKERY ADDITION

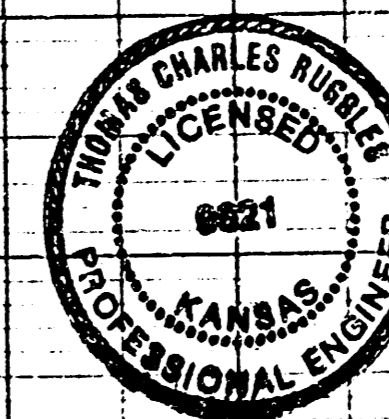
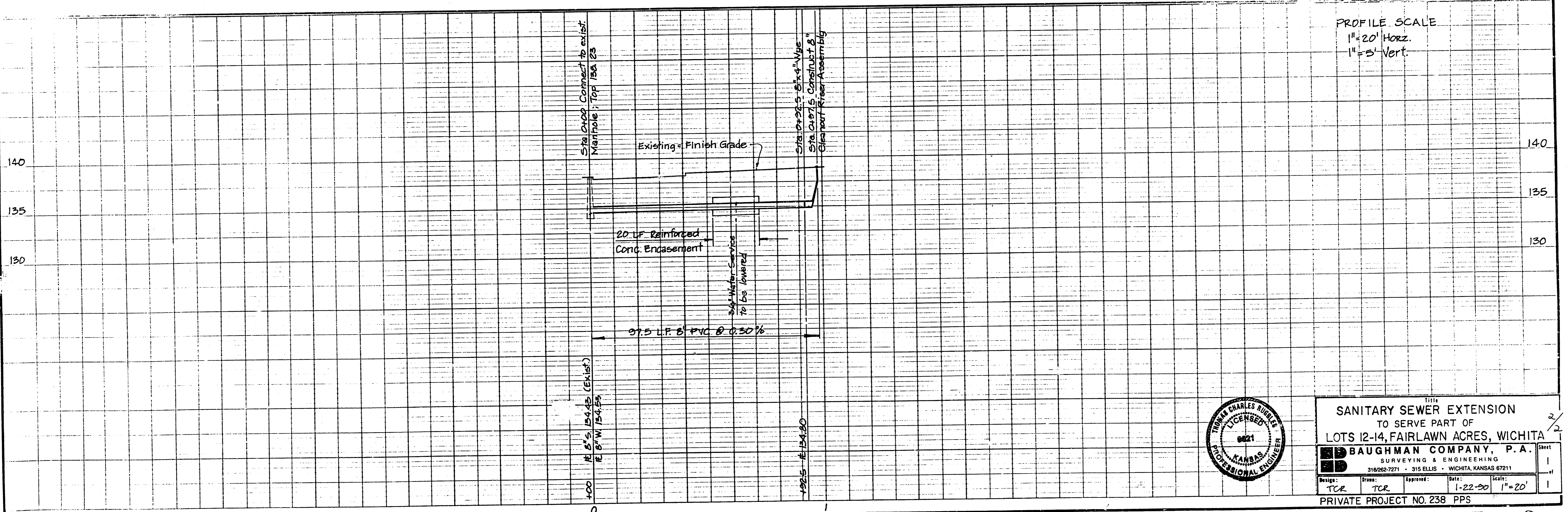
PART OF LOT 12 FAIRLAWN ACRES

APPROVED AS NOTED
By CITY ENGINEER OF WICHITA
Sanitary Sewers VRH 1/30/90
Storm Sewers _____
Driveway Approaches _____
Water Mains _____
Paving _____

NOTE TO CONTRACTOR

INSPECTION AND TESTING FOR THIS PROJECT IS TO BE PROVIDED BY A LICENSED CONSULTING ENGINEERING FIRM UNDER CONTRACT WITH THE OWNER/DEVELOPER. SAID INSPECTION TO BE IN ACCORDANCE WITH THE CITY OF WICHITA STANDARD CONSTRUCTION ENGINEERING PRACTICES AND CERTIFIED BY A LICENSED PROFESSIONAL ENGINEER. NO WORK SHALL BE PERFORMED IN DEDICATED EASEMENTS OR PUBLIC RIGHT-OF-WAY BY THE CONTRACTOR WITHOUT SUCH INSPECTION NOR SHALL ANY WORK BE COMMENCED WITHOUT WRITTEN AUTHORIZATION BY THE CITY ENGINEER.

PROFILE SCALE
1"=20' Horiz.
1"=5' Vert.



SANITARY SEWER EXTENSION
TO SERVE PART OF
LOTS 12-14, FAIRLAWN ACRES, WICHITA

BAUGHMAN COMPANY, P.A.
SURVEYING & ENGINEERING
316/262-7271 • 315 ELLIS • WICHITA, KANSAS 67211

Drawn: TCR Date: 1-22-90 Scale: 1"=20'
Checked: TCR Approved: _____
PRIVATE PROJECT NO. 238 PPS