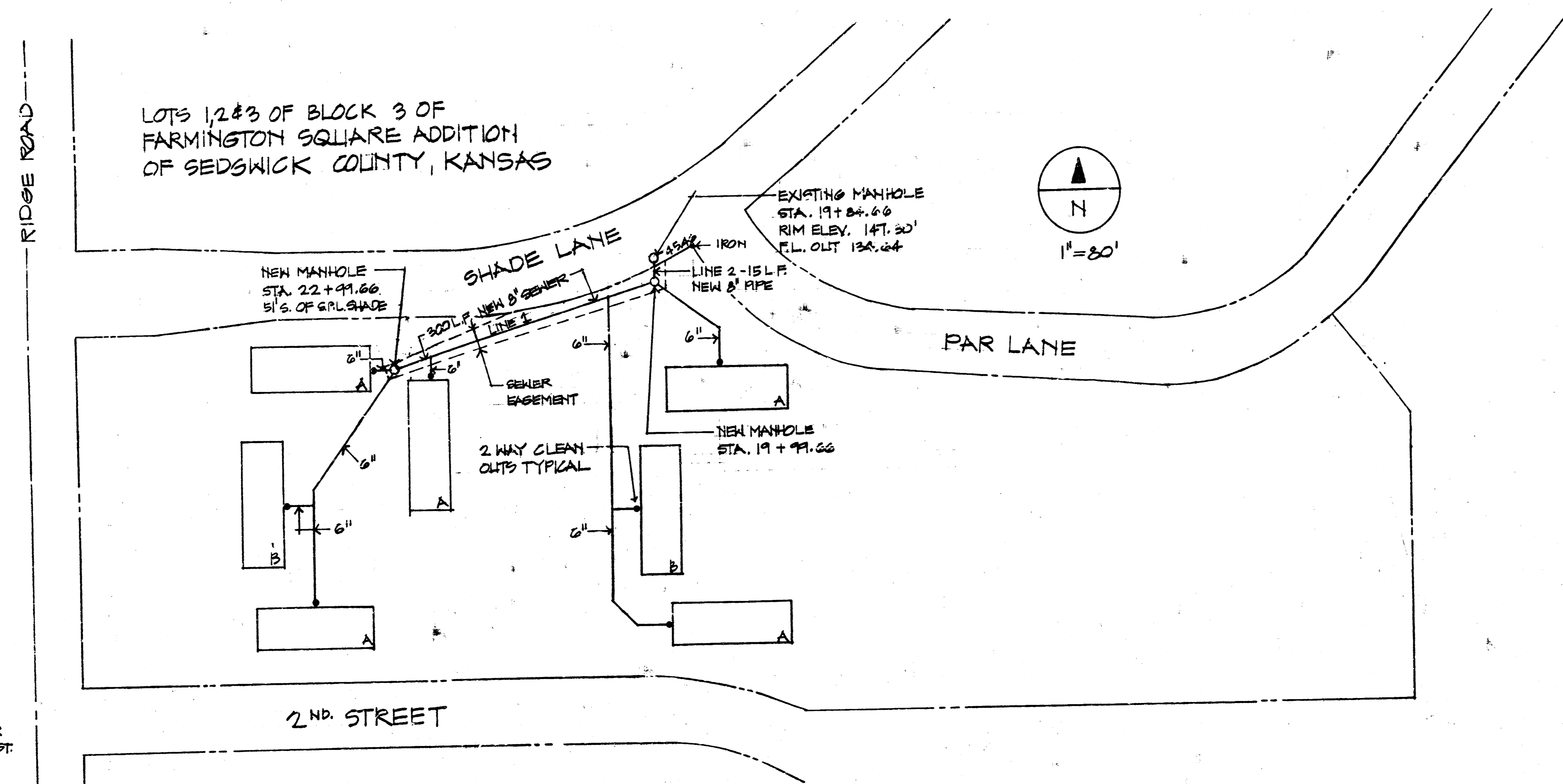
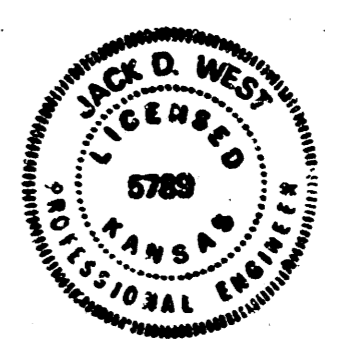


LOTS 1,2 & 3 OF BLOCK 3 OF
FARMINGTON SQUARE ADDITION
OF SEDGWICK COUNTY, KANSAS

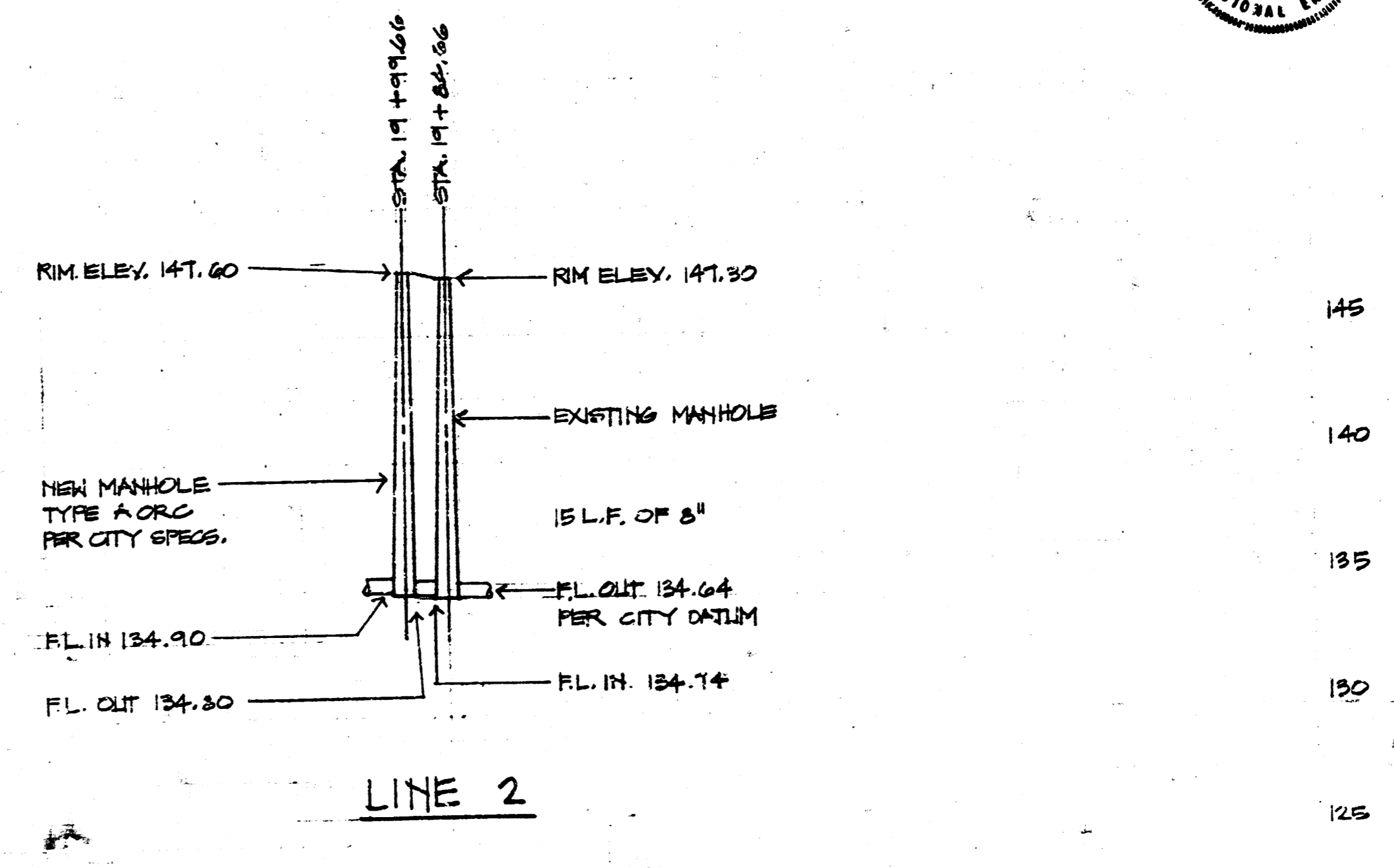
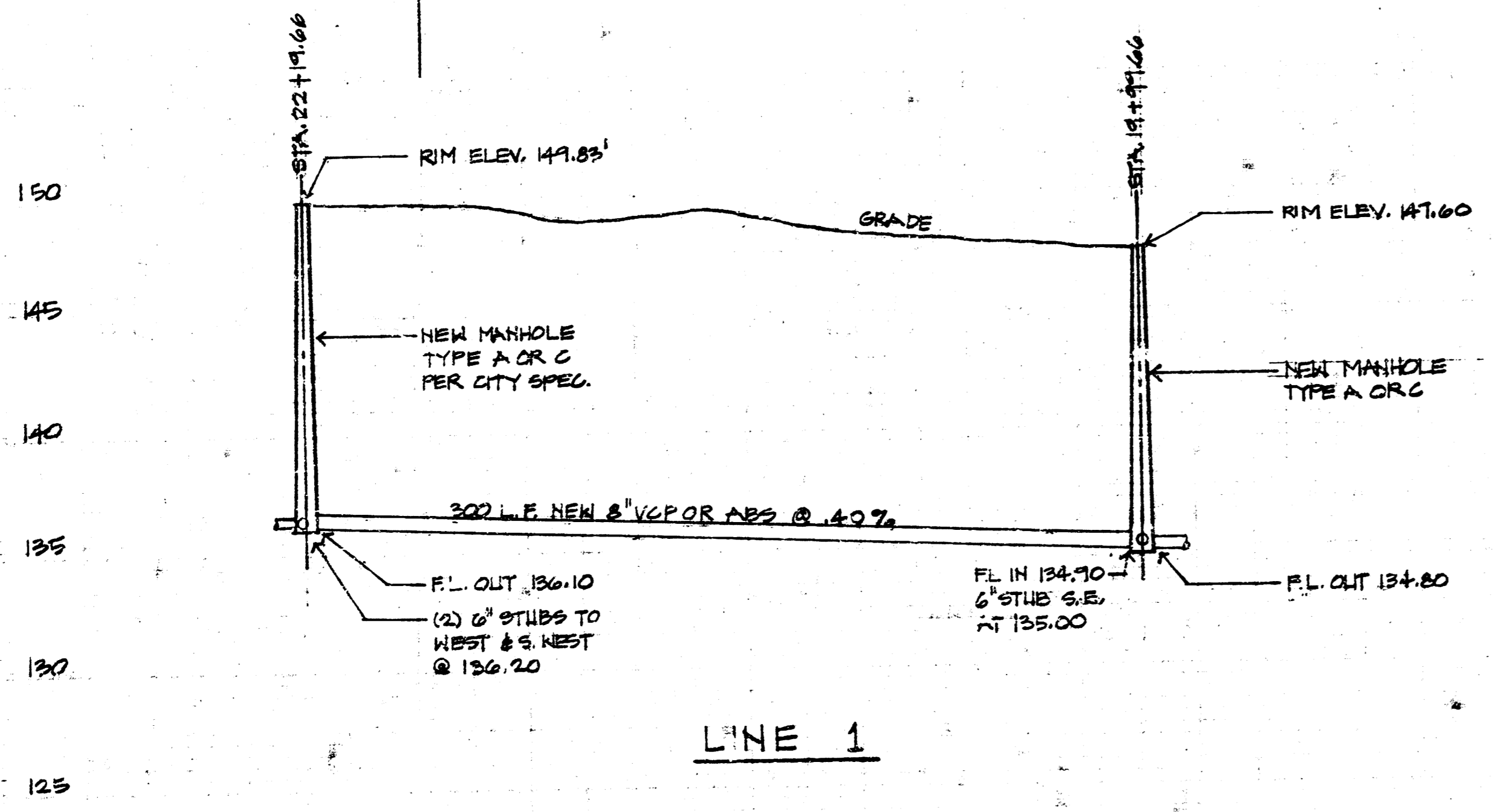


4-24-77
APPROVED AS NOTED
By CITY ENGINEER OF WICHITA
Sanitary Sewers *PCD*
Storm Sewers _____
Driveway Approaches _____

NOTE TO CONTRACTOR
This project will be constructed under the supervision of the CITY ENGINEER and conforming to the SPECIFICATIONS of the CITY OF WICHITA. The CONTRACTOR will reimburse the City of Wichita for all cost of ~~_____~~ and Inspection.



B.M. 144.96
CITY STD. N.W. CORNER
OF RIDGE RD. & 2ND ST.
34.5' N & 48.0' W



PROFILE SCALES
VERT. - 1" = 5'
HORIZ. - 1" = 40'

Lot 1, 2 & 3 Farmington Square Addn.
448-76-245-80746-000-000-008

FILMED FROM THE BEST
AVAILABLE COPY