

**SANITARY SEWER IMPROVEMENTS
TO SERVE**

**Lot 1, Block A
GATES LEARJET ADDITION
Private Project No. 643 PPS (607861)**

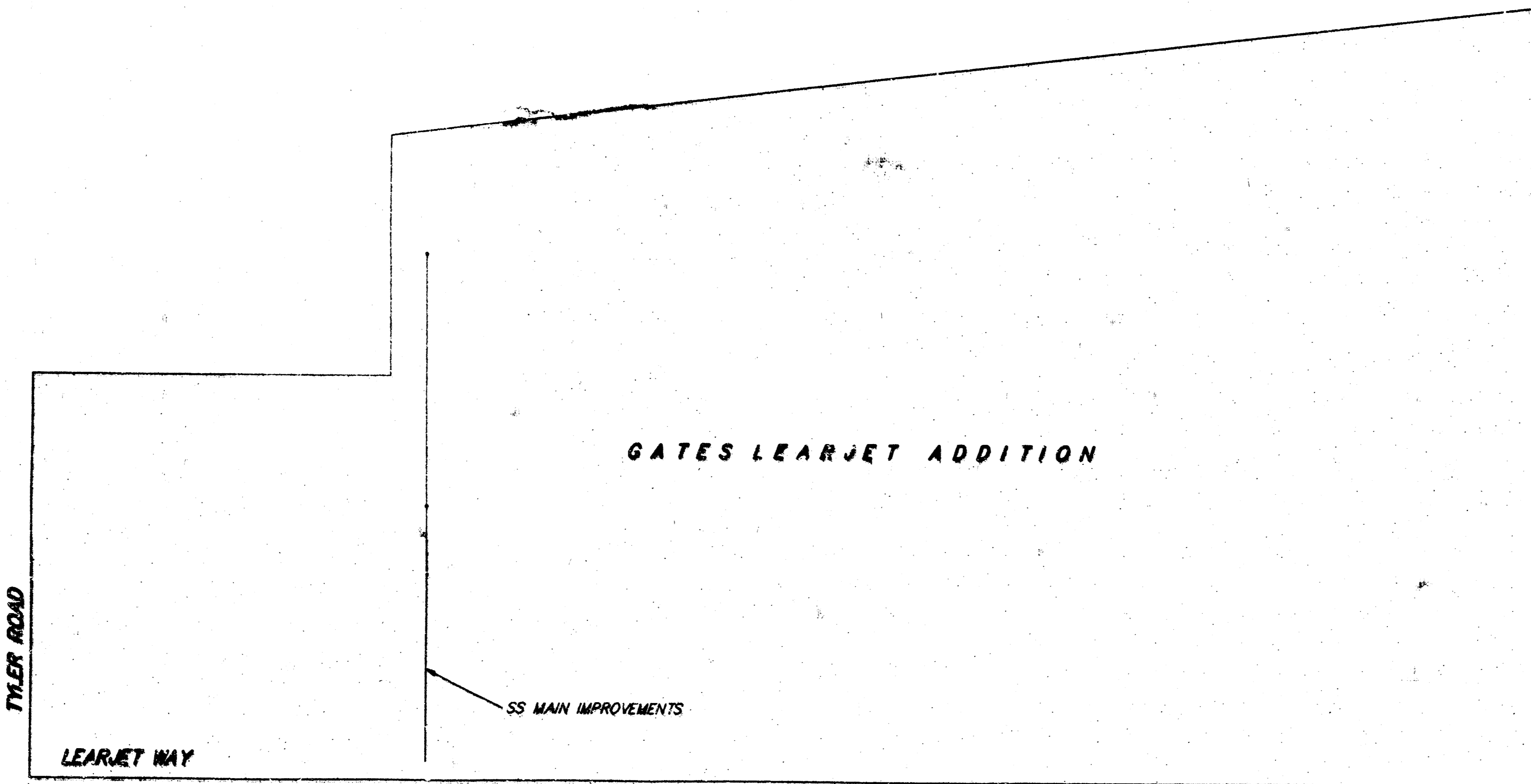
Michael E. Lindeback, P.E. City Engineer

Benchmark:

City of Wichita Disc.
SW Cor. Harry & Tyler
Elev. = 141.55 (city datum)

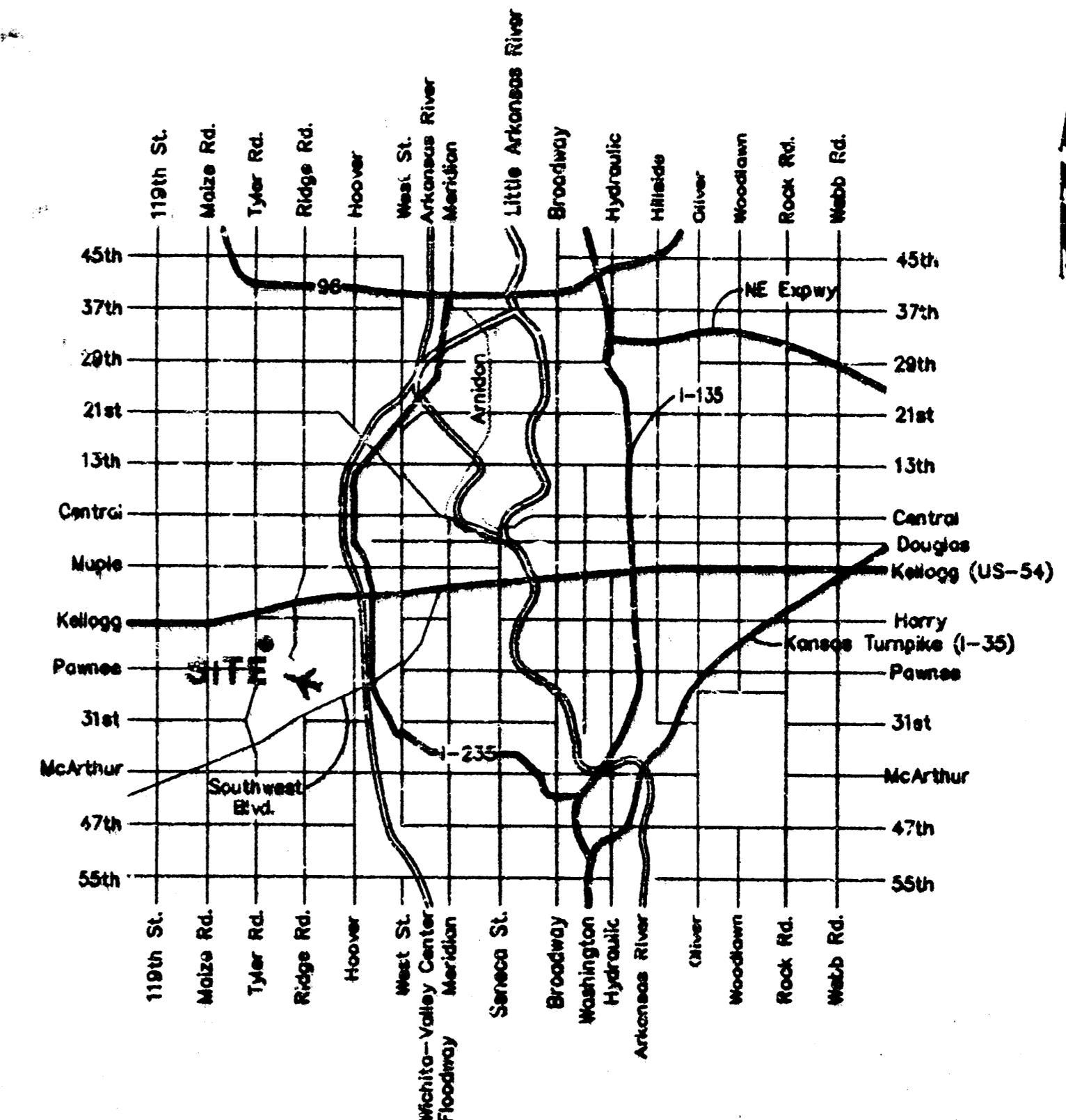
General Notes

1. Underground utility service lines and overhead utility pole lines are to be adjusted as necessary by others prior to construction unless the plans specifically call for their adjustment by the Contractor or unless the plans specifically identify a utility to be adjusted by its owner during construction. Existing utilities and their location, as shown on the plans, represent the best information obtainable for design. The Contractor will be required to mark around existing utilities within the right-of-way which do not conflict with proposed construction.
2. The Contractor shall give all property owners and/or tenants of developed property abutting the construction of this project a minimum of five (5) days advance notice prior to start of construction.
3. The Contractor shall be responsible for preserving property irons. The Contractor will be required to re-establish any property irons which are damaged or destroyed by his construction operations. Such irons shall be re-established by a licensed land surveyor in accordance with state laws.
4. Contractor will be required to provide notice to utility companies a minimum of twenty-four (24) hours prior to any excavation, as follows:
 Kansas One-Call 687-2470
 The Contractor must notify the following in case of an emergency:
 K.P.L. Gas Service Company 383-8650
 Kansas Gas & Electric Company 383-8600
 Cablevision 282-4270
 or
 Southwestern Bell Telephone Company 283-2087
 City of Wichita Water Dept. 268-6909
 City of Wichita Sewer Maintenance 288-4071
5. Existing utilities and their locations, as shown on the plans, represent the best information obtainable for design. Location information has been obtained from the various utility companies and is either from company record drawings or company-provided field locations. The Contractor will be required to work around existing utilities which do not conflict with proposed construction. The Contractor shall verify all utility locations prior to construction of this project.
6. Contractor shall verify depth & location of existing utilities prior to construction.
7. The Contractor shall be responsible for maintaining continuous flow of sewage through construction. Contractor's proposed method for maintaining sewage flow shall be approved by the Engineer. Cost of maintaining flow of sewage through construction will not be paid for directly and this cost shall be considered subsidiary to the other pay items of work.
8. Disturbed areas within the street right-of-way are to be restored to the conditions existing prior to construction.



SW COR 26-275+78

*Booked
1/28/97
ROR*



Location Map

Index of Sheets:

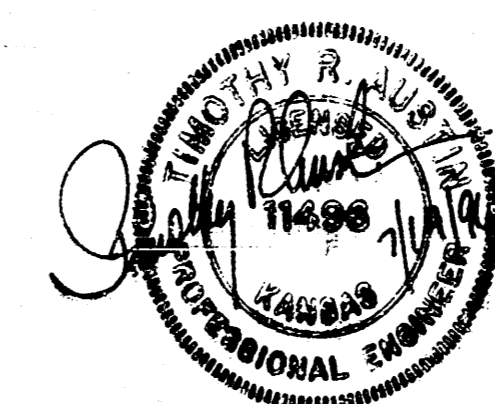
Title Sheet	1
Plan/Profile	2
Plan/Profile	3
Manhole Detail	4
Manhole Detail	5

**APPROVED AS NOTED
BY CITY ENGINEER OF WICHITA**

Sanitary Sewer VRH 7/19/96

NOTE TO CONTRACTORS

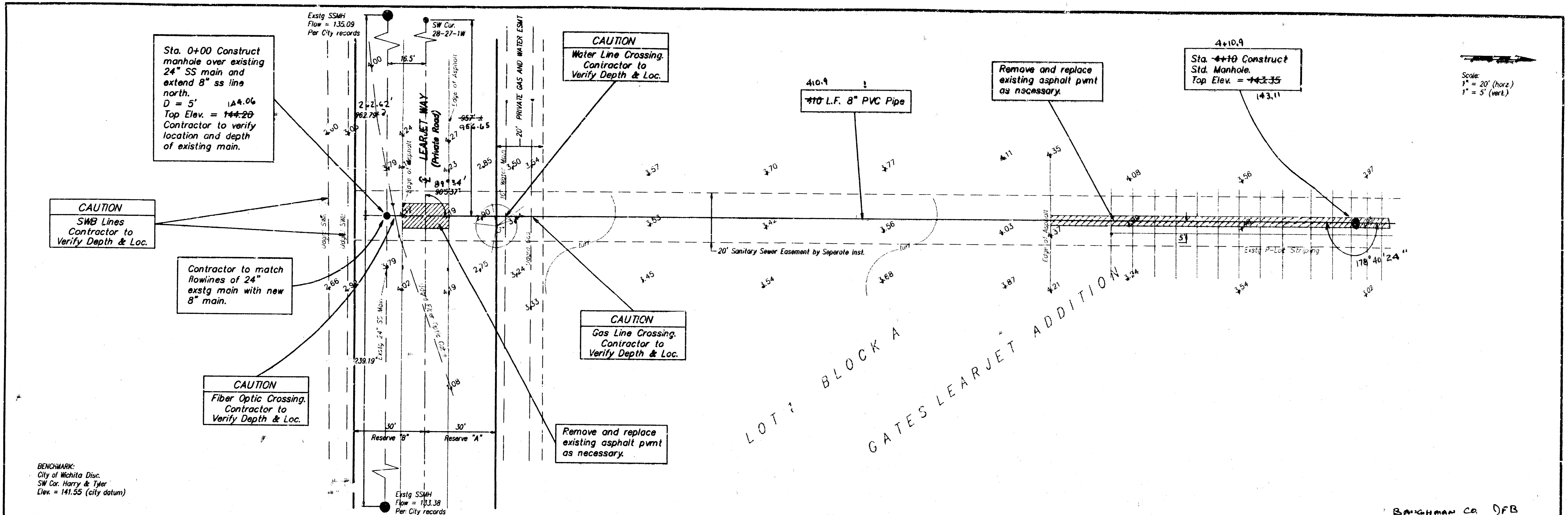
Inspection and testing for this project is to be provided by a Licensed Consulting Engineering Firm under contract with the Owner/Developer. Soil inspection to be in accordance with the City of Wichita standard construction engineering practices and certified by a Licensed Professional Engineer. It will not be performed in districts, easements or public right-of-way by the Contractor unless such inspection has been specifically authorized in writing by the City Engineer. All Construction and Materials shall comply with the City of Wichita Specifications and Standards (as they are available in the City Engineer's Office).



ASBUILT 10/22/96
BAUGHMAN CO. JFR

BAUGHMAN COMPANY P.A.
ENGINEERING, SURVEYING, & PLANNING
318-262-7271 • 315 ELLIS • WICHITA, KANSAS 67211

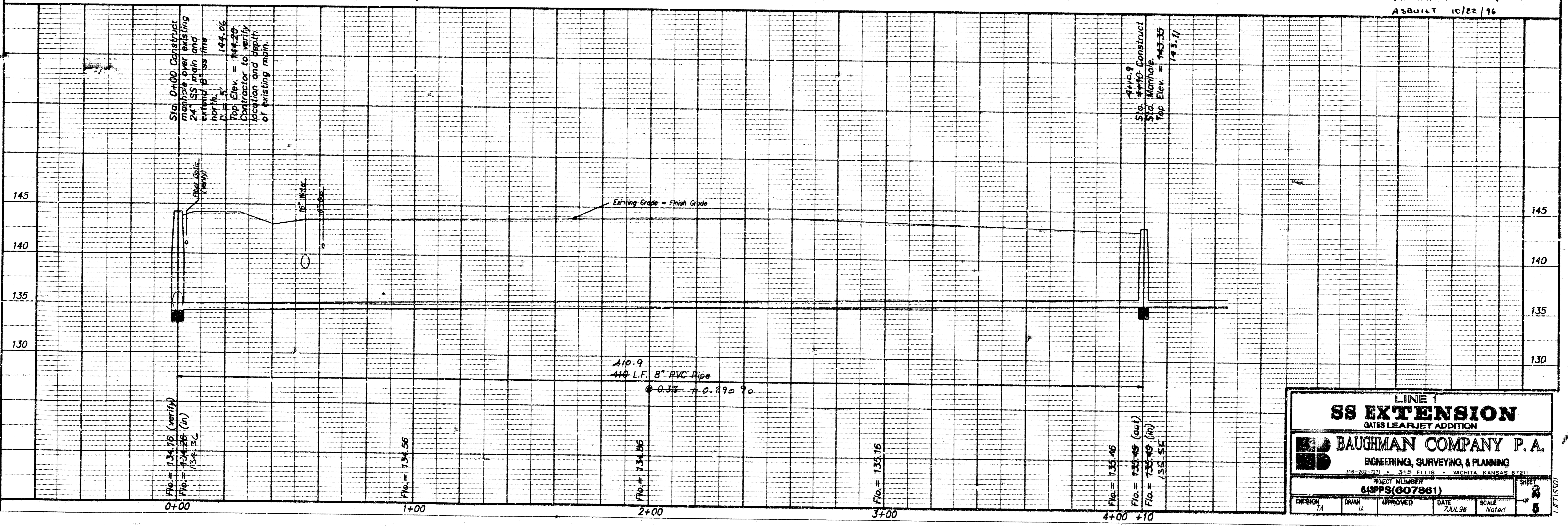
645 PPS

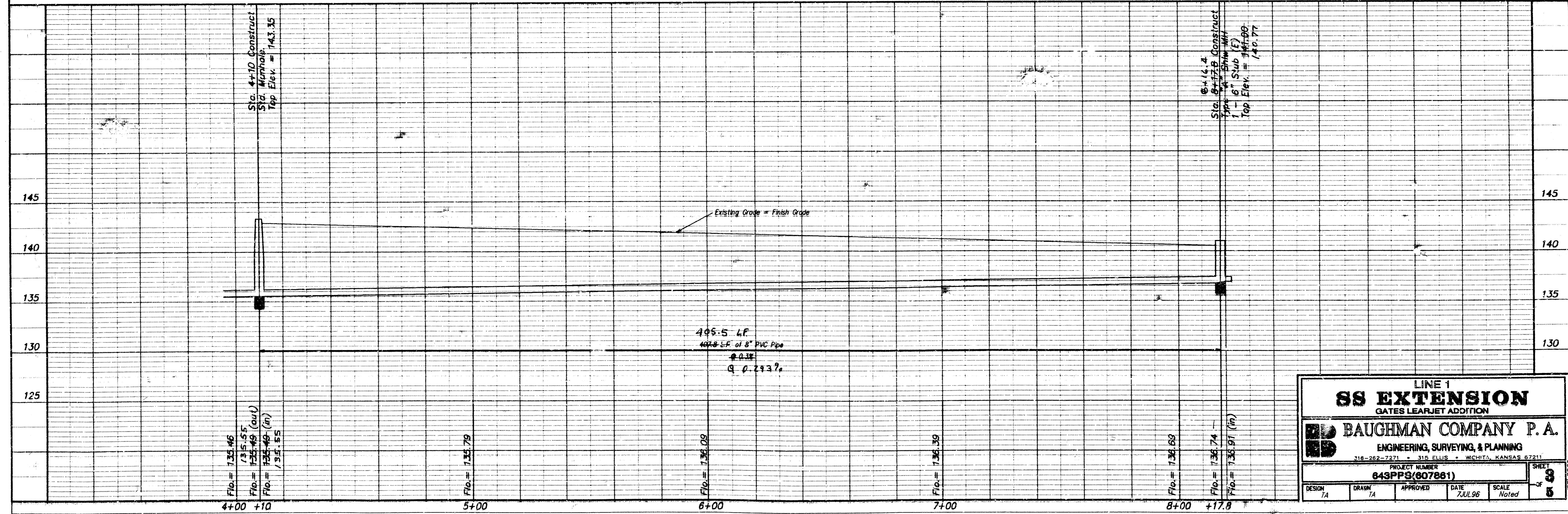
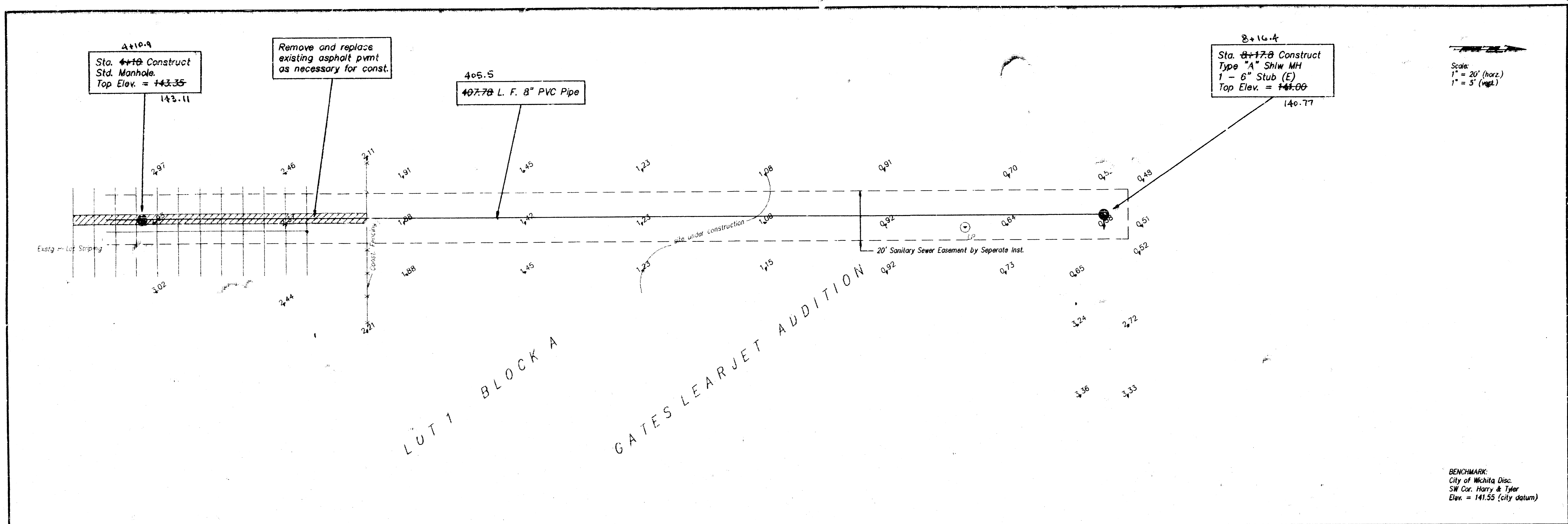


BENCHMARK:
 City of Wichita Disc.
 SW Cor. Harry & Tyler
 Elev. = 141.55 (city datum)

Scale:
 1" = 20' (horiz)
 1" = 5' (vert.)

BAUGHMAN Co. DFB
 ASBUILT 10/22/96





LINE 1				
SS EXTENSION				
GATES LEARJET ADDITION				
BAUGHMAN COMPANY P.A.				
ENGINEERING, SURVEYING, & PLANNING				
316-262-7271 • 316 ELLIS • WICHITA, KANSAS 67211				
PROJECT NUMBER				
64SPS(907881)				
DESIGN	DRAW	APPROVED	DATE	SCALE
TA	TA		7/JUL/96	Noted
				SHEET
				3
				5

