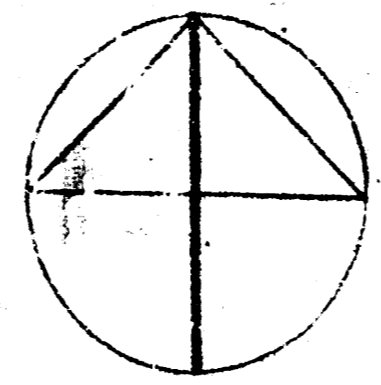


APPROVED AS SHOWN  
 by CITY ENGINEER OF WICHITA  
 Storm Sewers  
 Driveway Approaches

NOTE TO CONTRACTOR  
 This project will be constructed under the supervision of the CITY ENGINEER and conforming to the SPECIFICATIONS of the CITY OF WICHITA. The CONTRACTOR will prepay the City of Wichita for all costs of inspection.

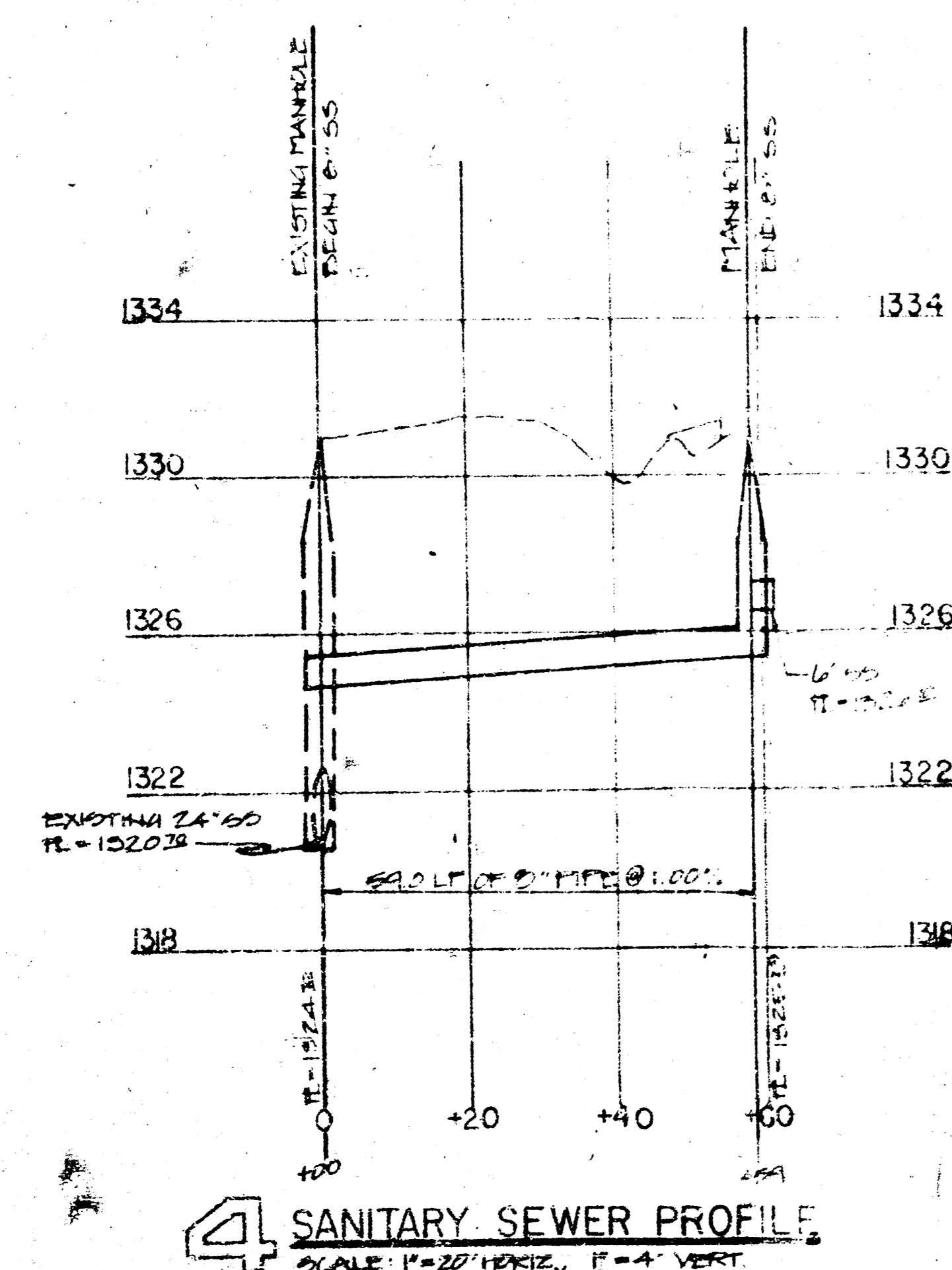
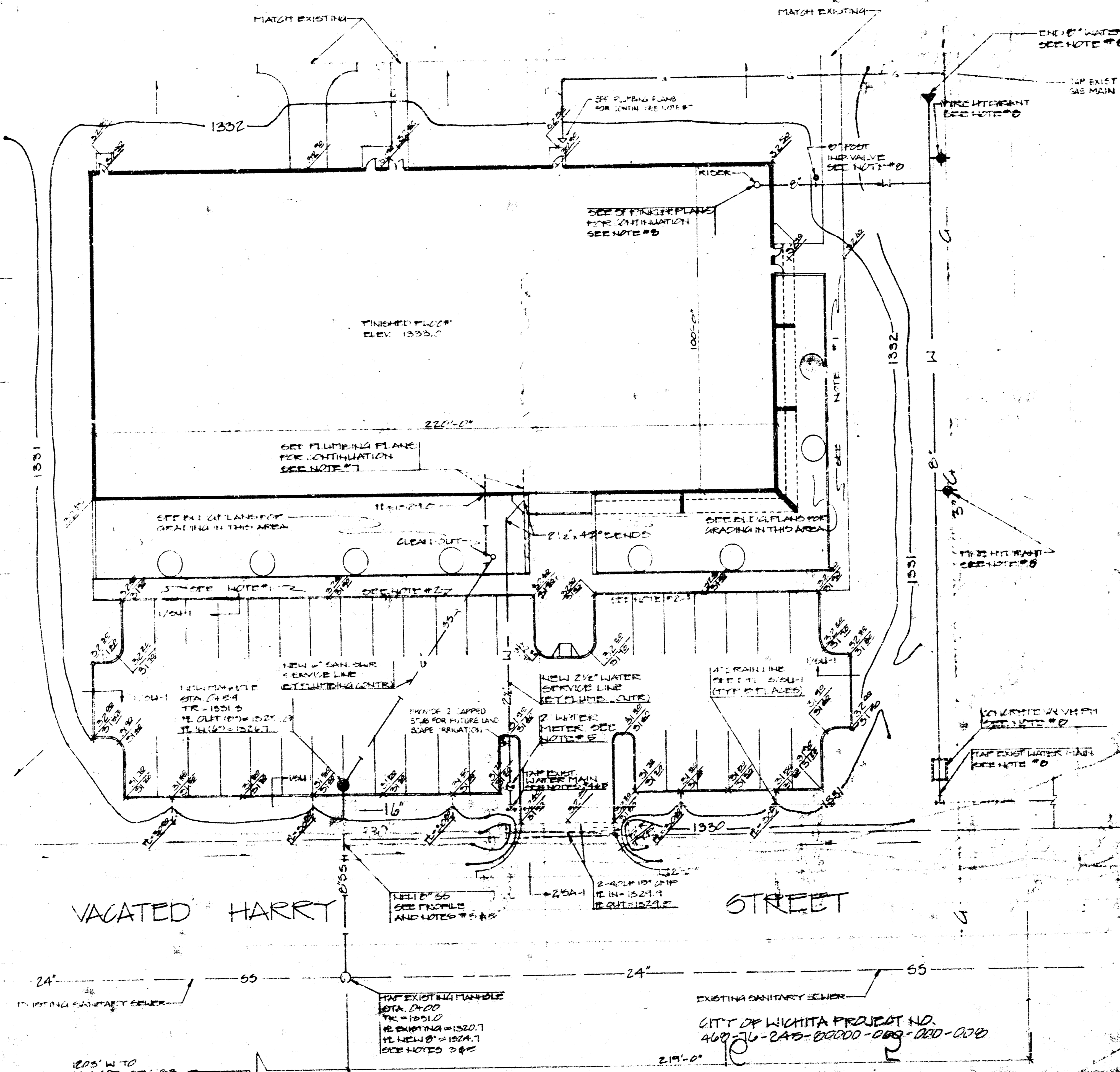


SCALE: 1" = 20'-0"

THESE NOTES ARE TO BE READ IN CONNECTION WITH THE DRAWINGS AND SPECIFICATIONS. THE CONTRACTOR SHALL BE RESPONSIBLE FOR OBTAINING ALL NECESSARY PERMITS AND APPROVALS FROM THE CITY OF WICHITA. THE CONTRACTOR SHALL MAINTAIN ACCESS TO ALL ADJACENT PROPERTIES AT ALL TIMES. THE CONTRACTOR SHALL BE RESPONSIBLE FOR PROTECTING ALL EXISTING UTILITIES AND STRUCTURES. THE CONTRACTOR SHALL MAINTAIN ALL NECESSARY RECORDS AND AS-BUILT DRAWINGS.

NOTES

1. ALL SEWER LINES TO HAVE 1/4" PER FOOT CROSS SLOPE.
2. PROVIDE REVERSE SLOPE ON CURB AND WALKER SECTION WHERE DRAINAGE IS AWAY FROM CURB.
3. CONTRACTOR TO VERIFY EXACT LOCATION OF EXISTING SANITARY SEWER MAINS. CONTRACTOR TO MAKE ARRANGEMENTS WITH "CITY OF WICHITA" TO USE EXISTING SANITARY SEWER MAINS AND EXTEND SERVICE. CONTRACTOR TO PAY ALL EXPENSES INVOLVED IN PROVIDING TAP AND SERVICE, INCLUDING FEES, INSPECTIONS, ENGINEERING, MATERIALS, ETC. PROVIDED BY CITY.
4. CONTRACTOR TO VERIFY EXACT LOCATION OF EXISTING WATER MAIN. CONTRACTOR TO MAKE ARRANGEMENTS WITH "CITY OF WICHITA" TO TAP EXISTING WATER MAIN AND EXTEND SERVICE. CONTRACTOR TO PAY ALL EXPENSES INVOLVED IN PROVIDING TAP AND SERVICE, INCLUDING FEES, INSPECTIONS, ENGINEERING, MATERIALS, ETC. PROVIDED BY CITY.
5. WATER LINES, SANITARY SEWER LINES, AND APPURTENANCES TO BE CONSTRUCTED IN ACCORDANCE WITH "CITY OF WICHITA" STANDARDS AND SPECIFICATIONS.
6. ALL MANHOLE AND METER COVERS TO BE BOLTED OR SELF-LOCKING.
7. CONTRACTOR TO VERIFY AND COORDINATE EXACT EXISTENT LOCATION AND ELEVATION OF UTILITIES WITH PLUMBING PLANS.
8. SEE SPRINKLER DRAWINGS FOR CONSTRUCTION DETAILS ON FIRE PROTECTION SYSTEM.

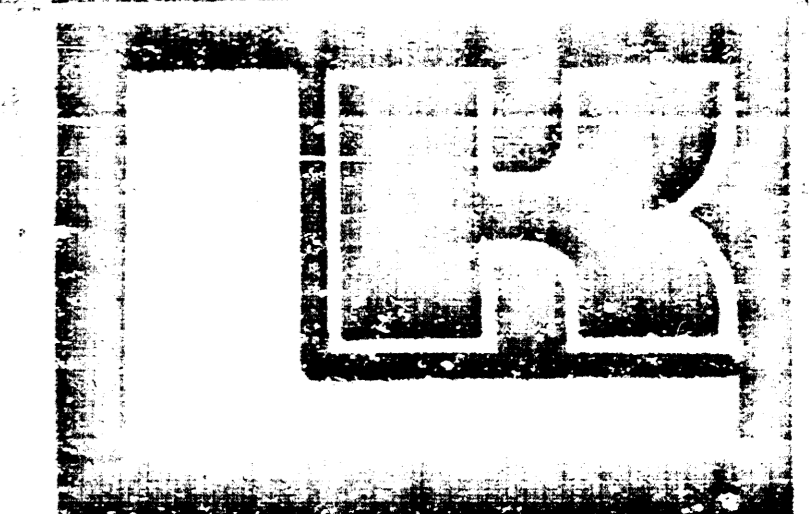


4 SANITARY SEWER PROFILE  
 SCALE: 1" = 20' HORIZ., 1" = 4' VERT.

PURPOSE	
DATE	DESCRIPTION

FOR CONSTRUCTION:

REVISIONS		
DATE	ITEM	NO.



LAW/KINGDON, P.A.  
 315 S. HARVEY STREET, SUITE 200  
 WICHITA, KANSAS 67202  
 PHONE (316) 268-0884  
 ARCHITECTS & ENGINEERS

Copyright © 1981 Law/Kingdon, P.A.

DRAWN	CHECKED
RAU	
RELATED DRAWINGS	
SHELL	
DETAILS	
STRUCTURE	
MECHANICAL	
ELECTRICAL	
OTHER	

BUSINESS SERVICES FACILITY  
 for  
**GatesLearjet**  
 WICHITA, KANSAS  
 PROJECT NUMBER 2269

GatesLearjet Corporation  
 SANITARY SEWER PLAN  
 SHEET TITLE SHEET NUMBER  
 TENANT NUMBER SHEET NUMBER  
**SUP**

FILMED FROM THE BEST AVAILABLE COPY