

SANITARY SEWER EXTENSION AND PRIVATE STORM SEWER

TO SERVE LOT 11, BLOCK 1, EXCEPT S. 40 FEET
 GREAT PLAINS BUSINESS PARK 2ND ADDITION
 PRIVATE PROJECT NUMBER 1333 PPS (607861)

INDEX OF SHEETS

1. INDEX SHEET
2. SANITARY SEWER PLAN/PROFILE
3. SANITARY MANHOLE DETAILS
4. SITE GRADING PLAN
5. STORM SEWER PLAN/PROFILE
6. DROP INLET DETAIL

BENCHMARKS

COW BM (RSC) OLIVER & 37TH N.
 SW COR 1/4 BOUND 100' ± E. OF OLIVER
 ON 37TH ST. N. ELEV. 1374.24

* T.C. E. OF NE COR LOT 11, BLK 1
 GREAT PLAINS BUS. PARK, 2ND ADDITION
 ELEV. 1300.50

GENERAL NOTES

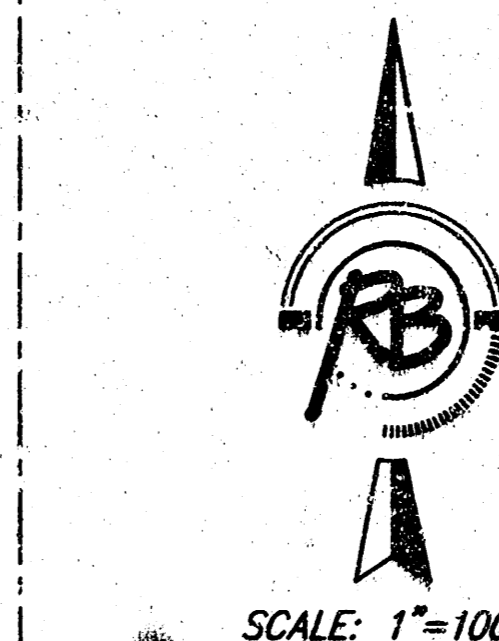
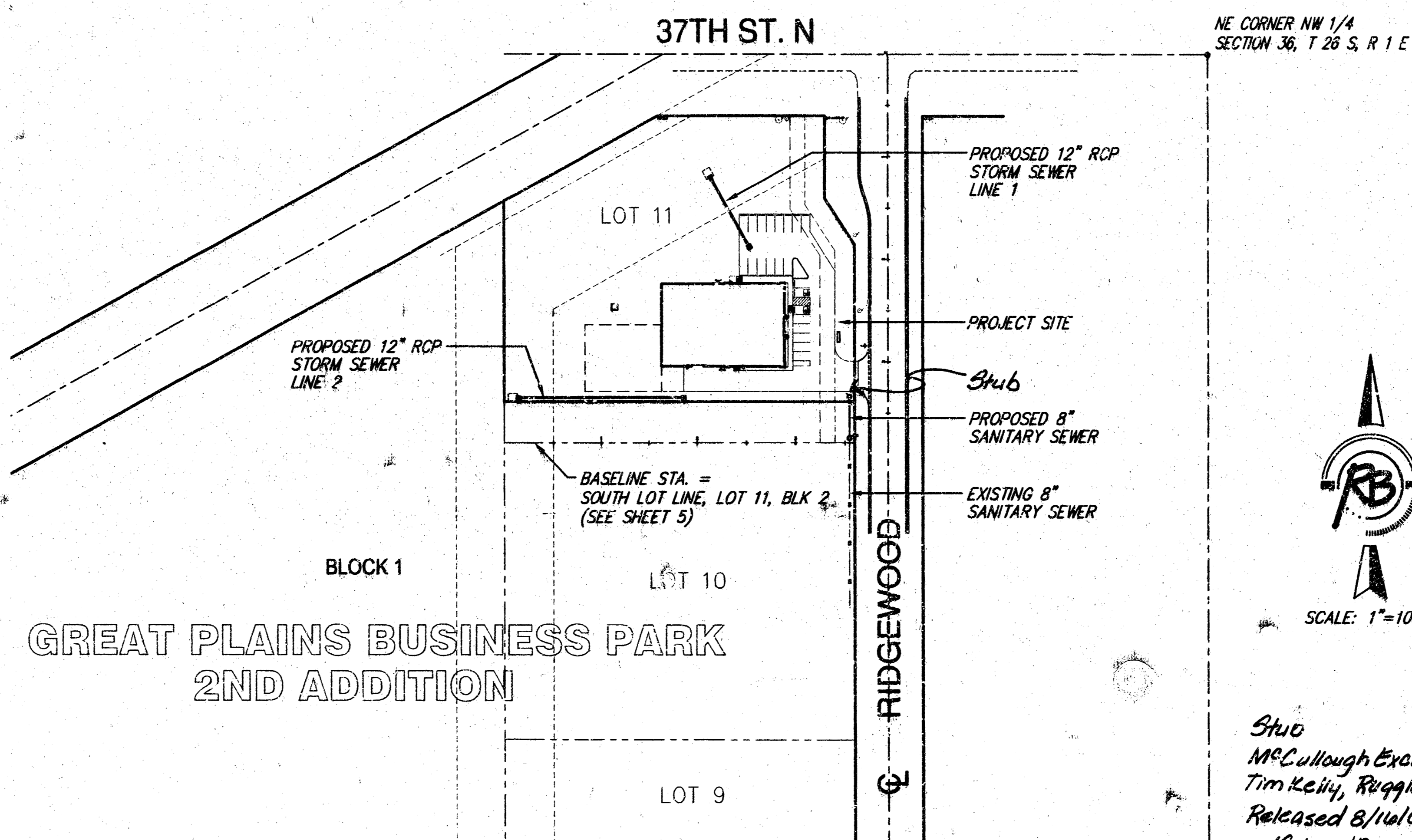
1. Contractor will be required to provide a minimum advance notice of forty-eight (48) hours to utility companies prior to starting any excavation as follows:

Kansas One-Call 687-2470

The Contractor must notify the following in case of an emergency:

Cox Communications	262-0661
Kansas Gas Service	383-8600
Westar	383-8600
Aquila Energy	1-800-303-0357
Southwestern Bell Telephone Company	1-800-286-8313
City of Wichita Water Department	262-6000
City of Wichita Sewer Maintenance	262-6000

2. Existing utilities and their location, as shown on the plans, represent the best information obtainable for design. Location information has been obtained from the various utility companies and is either from company record drawings or company-provided field locations. The Contractor will be required to work around existing utilities within the right-of-way which do not conflict with proposed construction.
3. This project is located within the limits of a larger project which will include building construction. The General Contractor for the project will submit a Storm Water Pollution Prevention Plan for the entire project prior to beginning any work on this project.
4. This project is to be constructed in accordance with City of Wichita Standard Specifications for the Construction of City Projects, and Policy of Construction of Public Works Improvements by Private Contract.
5. No work shall begin on this project before required bonds are submitted to the City of Wichita, and the project inspector has been notified.
6. All areas of public R/W disturbed by construction of this project are to be restored in accordance with Administrative Regulation AR 78 of the City of Wichita.
7. Traffic will not be affected by this project.



Stuo
 McCullough Excavation- Contractor
 Tim Kelly, Ruggles & Bohm - Inspector
 Released 8/16/04
 pdf by JDL

APPROVED AS NOTED
 BY CITY ENGINEER OF WICHITA

Sanitary Sewers VRH 4/17/03

Storm Sewers VRH 4/17/03

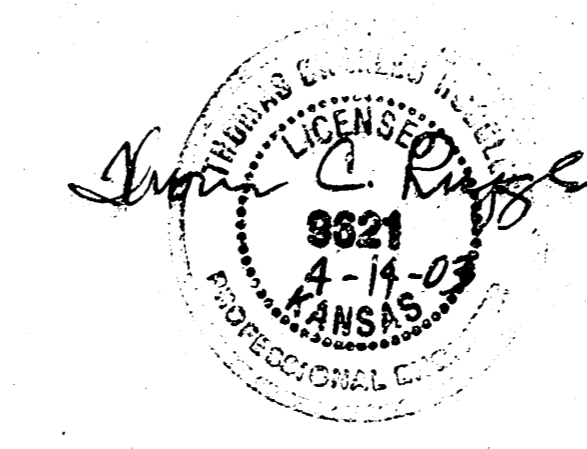
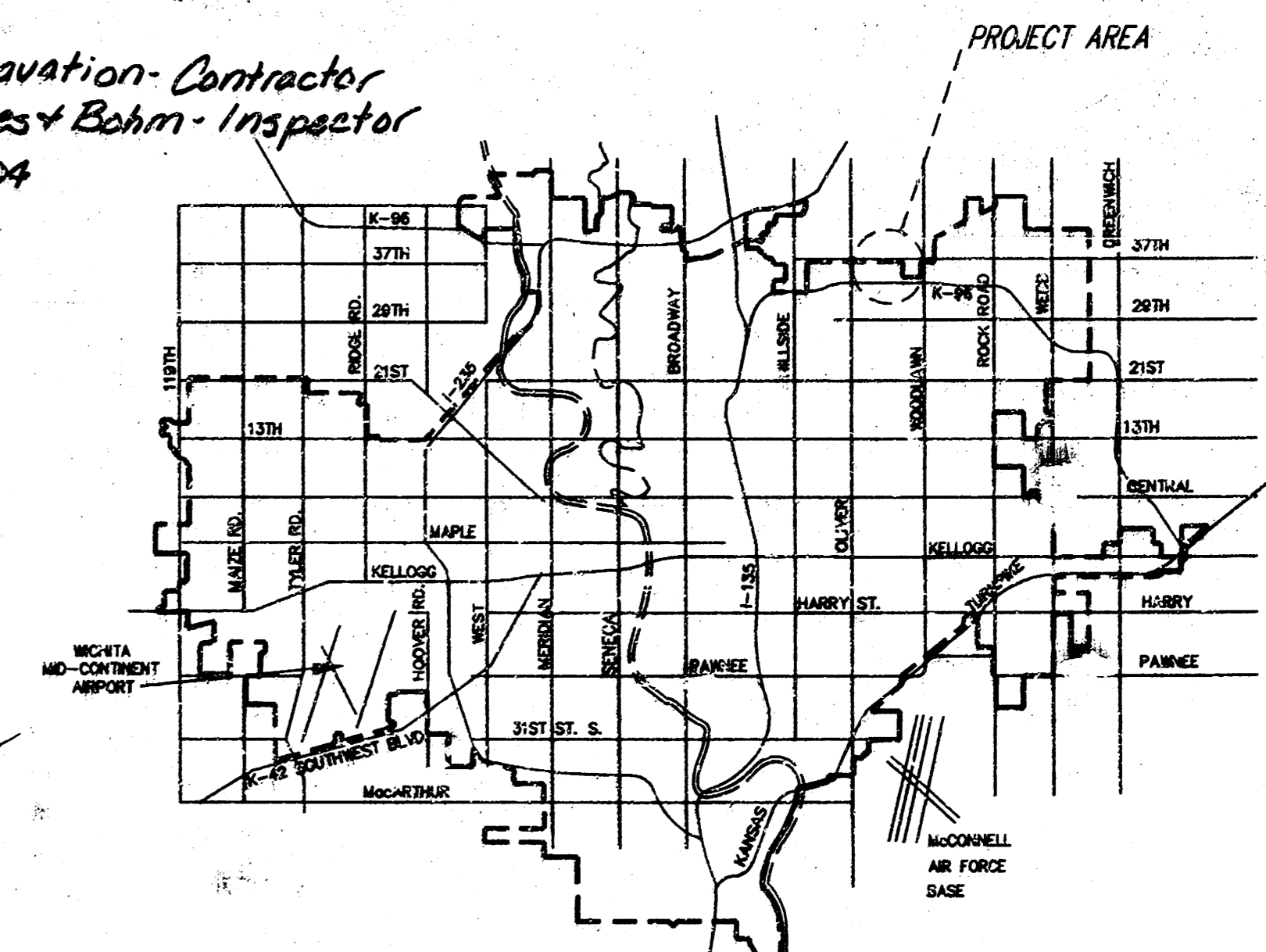
Driveway Approaches _____

Water Mains _____

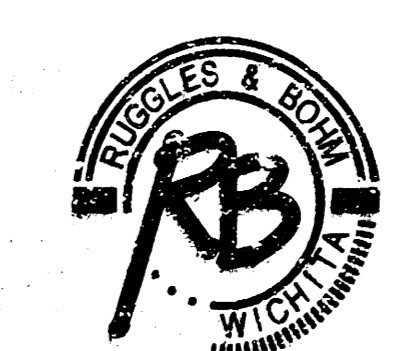
Paving _____

NOTE TO CONTRACTORS

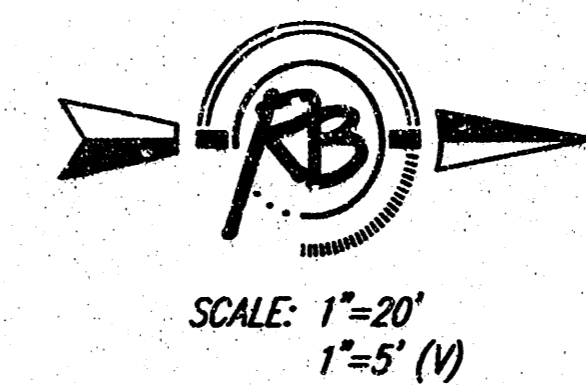
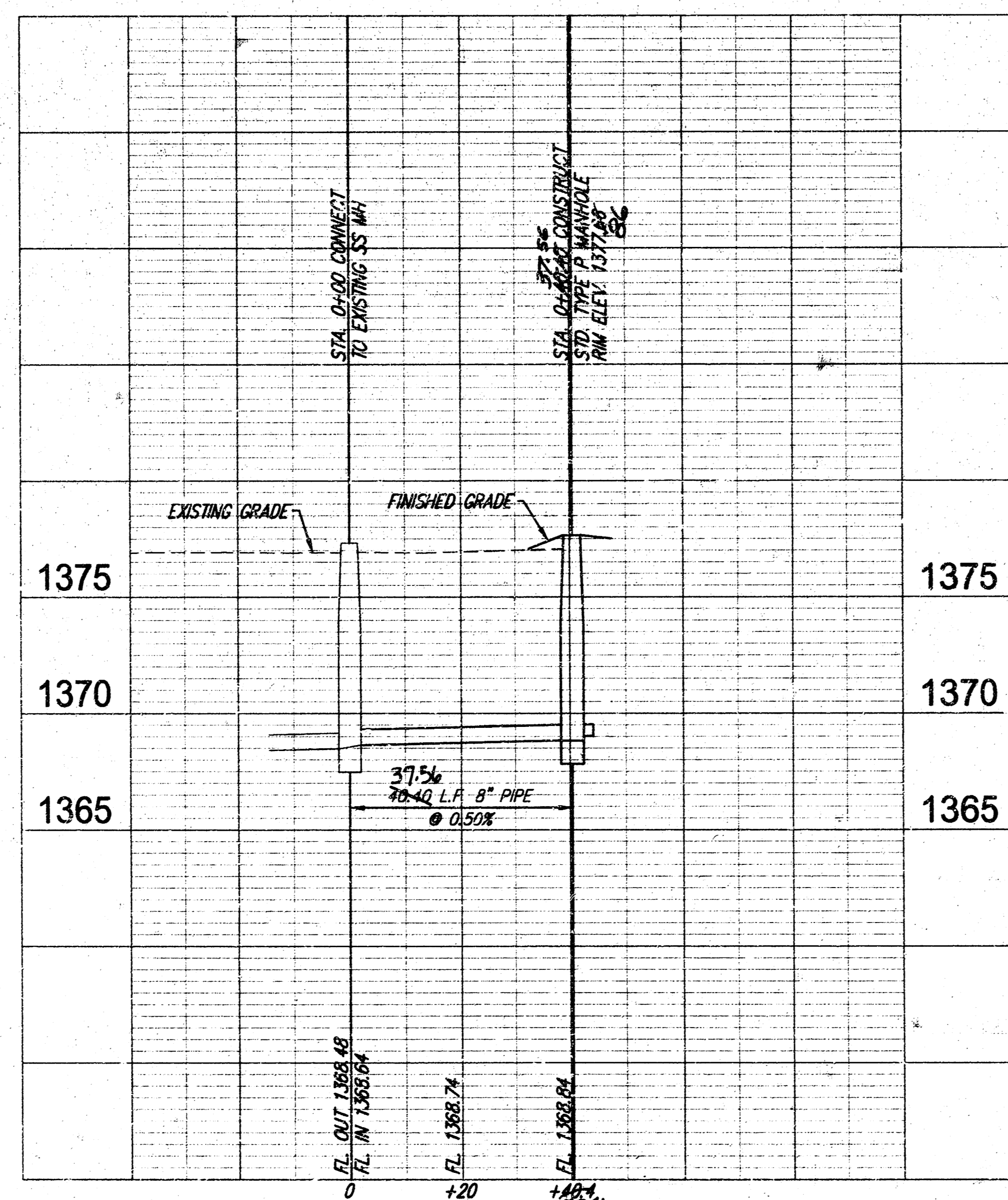
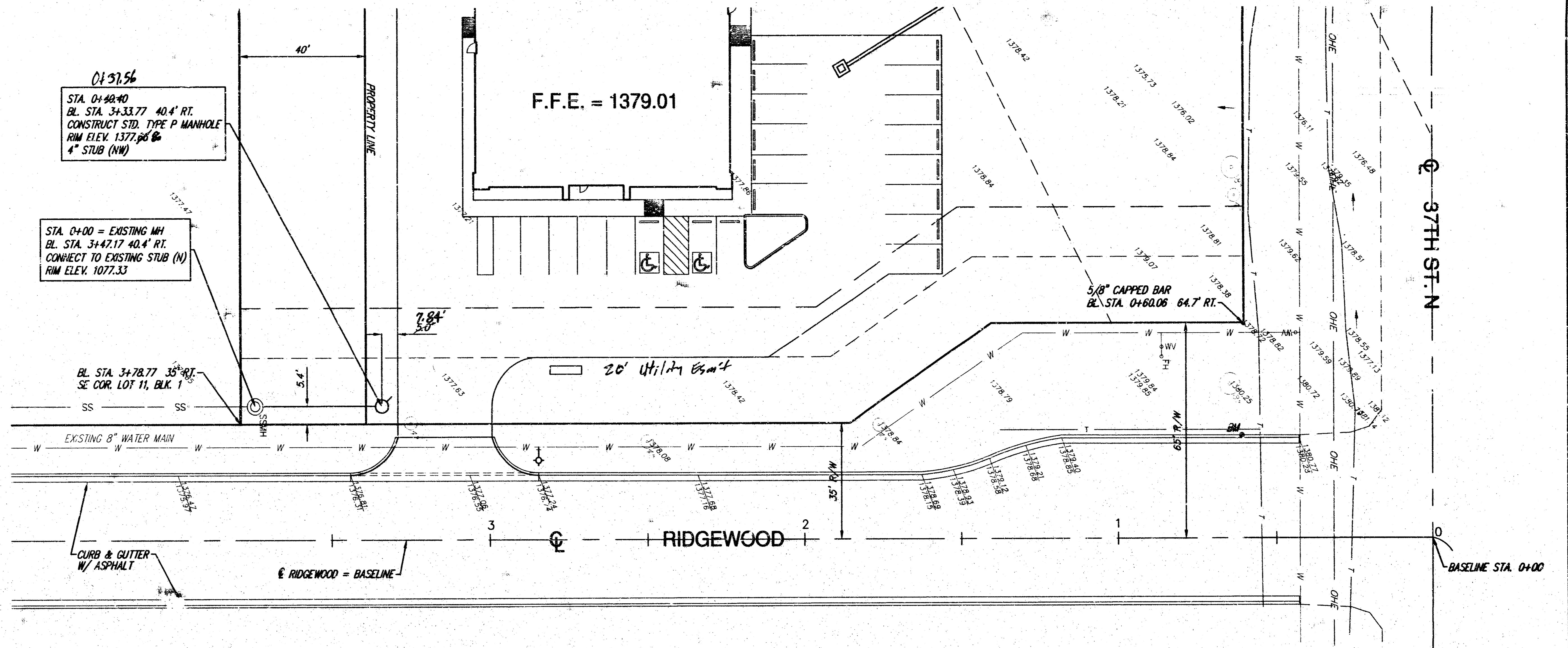
Inspection and testing for this project are to be provided by a Licensed Consulting Engineering Firm under contract with the Owner/Developer. Said inspection to be in accordance with the City of Wichita standard construction engineering practices and certified by a Licensed Professional Engineer. No work shall be performed in dedicated easements or public right-of-way by Contractor without such inspection, nor shall any work be commenced without written authorization by the City Engineer.



CITY OF WICHITA, KANSAS
 NEIL D. CABLE, P.E., CITY ENGINEER



Revised as-built 8-6-04
 Ruggles & Bohm, P.A.
 Engineering, Surveying, Land Planning
 924 North Main (316) 264-8008
 Wichita, Kansas 67203 (316) 264-4621 fax
 www.rbkansas.com E-mail: info@rbkansas.com



BENCHMARKS
 COW BM (DISC) OLIVER & 37TH N.
 SW COR HUBGUARD 100' ± E. OF OLIVER
 ON 37TH ST. N. ELEV. 1374.24
 * □ T.C. E. OF NE COR LOT 11, BLK 1
 GREAT PLAINS BUS. PARK, 2ND ADDITION
 ELEV. 1380.50

NE CORNER NW 1/4
 SECTION 36, T 26 S, R 1 E

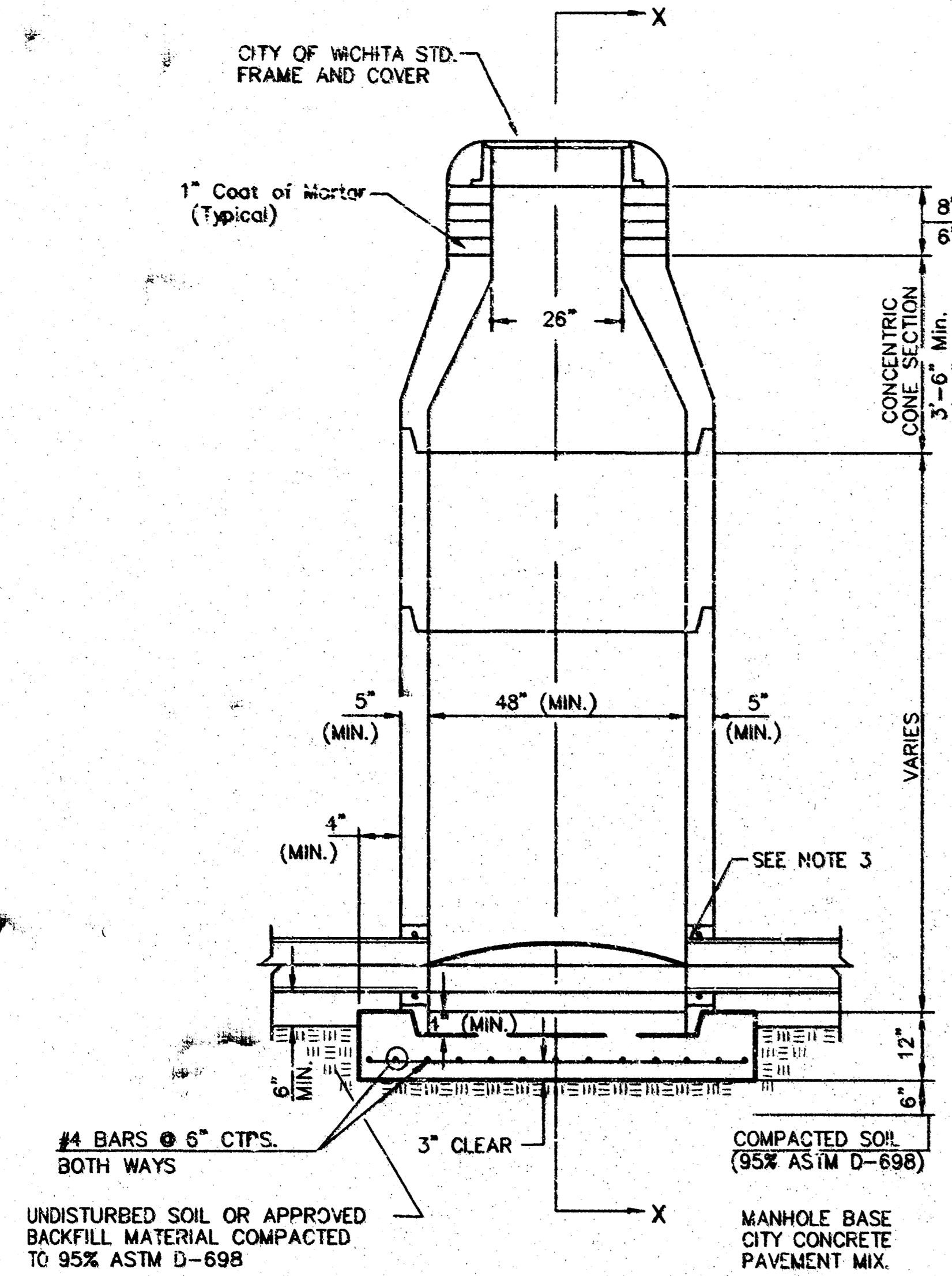
Rev as-built 8-6-04

**LOT 11, BLK 1, GREAT PLAINS BUSINESS PARK 2ND ADD.
 SANITARY SEWER PLAN & PROFILE
 WICHITA, KANSAS**

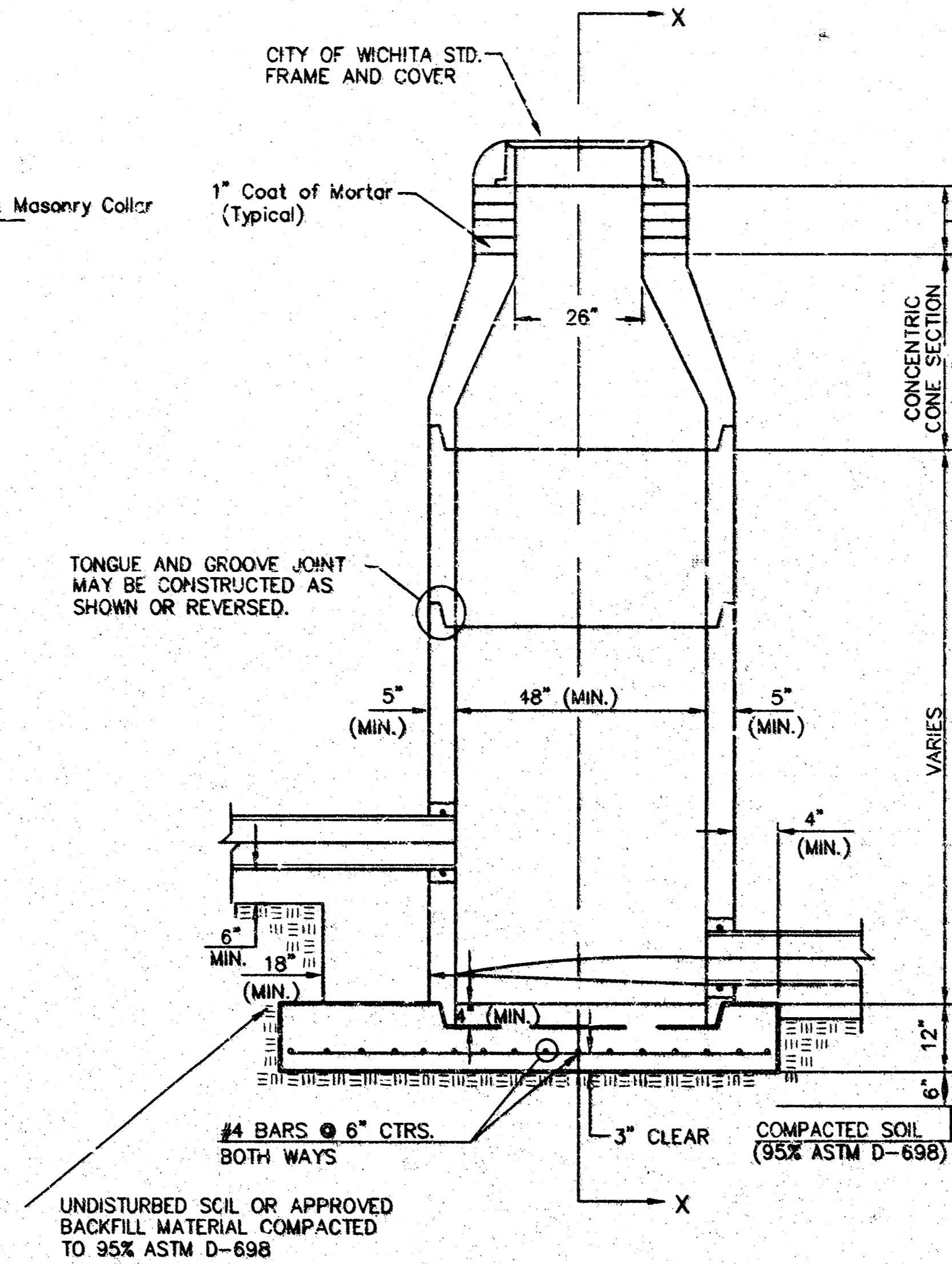
	Rugeles & Bohm, P.A. Engineering, Surveying, Land Planning	DESIGN: TCR DRAWN: EJB REVIEW:	SHEET 2 OF 6
	824 North Main Wichita, Kansas 67203 www.rbkansas.com (316) 264-8008 (316) 264-4621 fax E-mail: info@rbkansas.com	PROJECT NUMBER 1333 PPS 607861	

DRAWING FILE: Base [Sanitary]

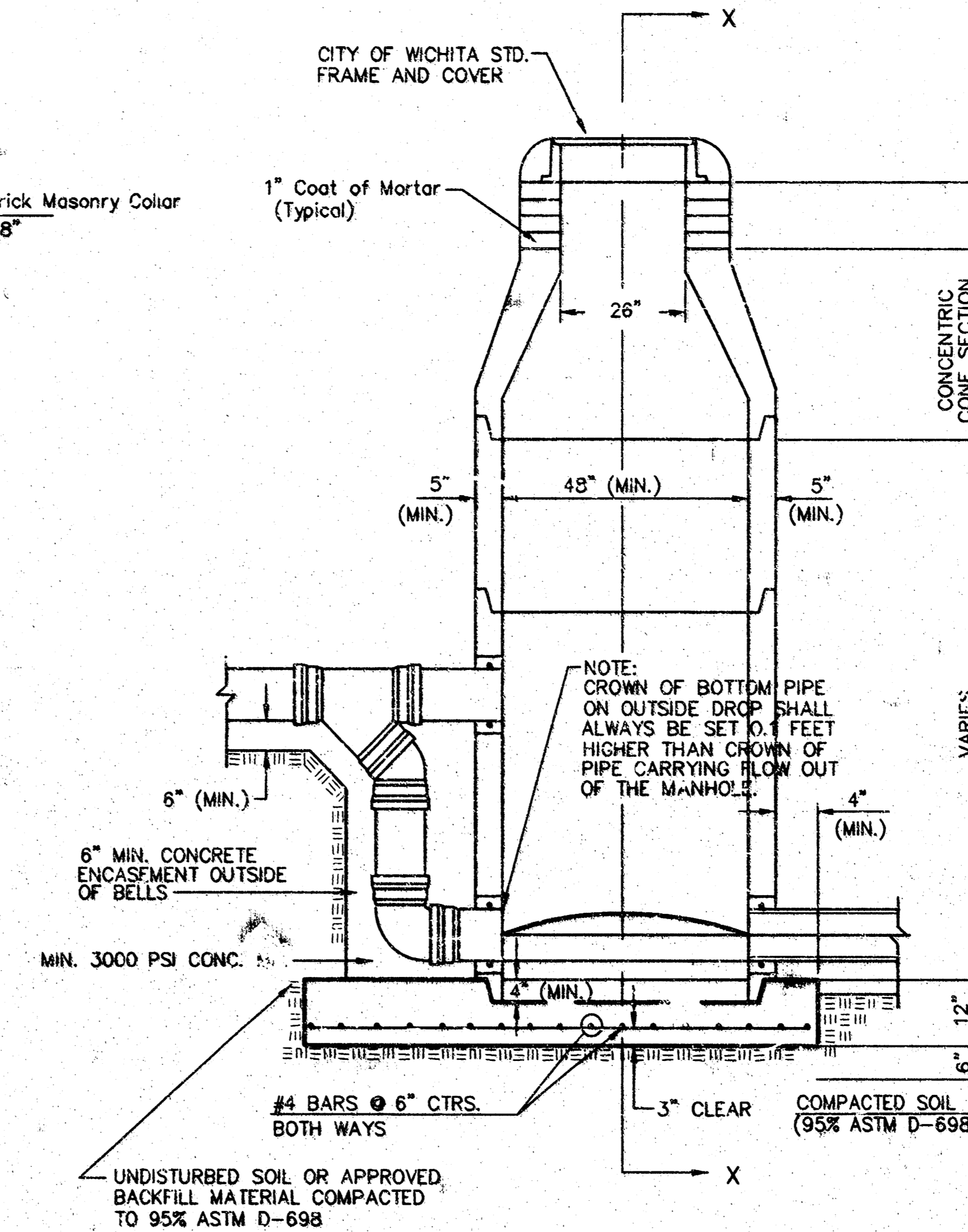
SEWER APPURTENANCES DETAILS



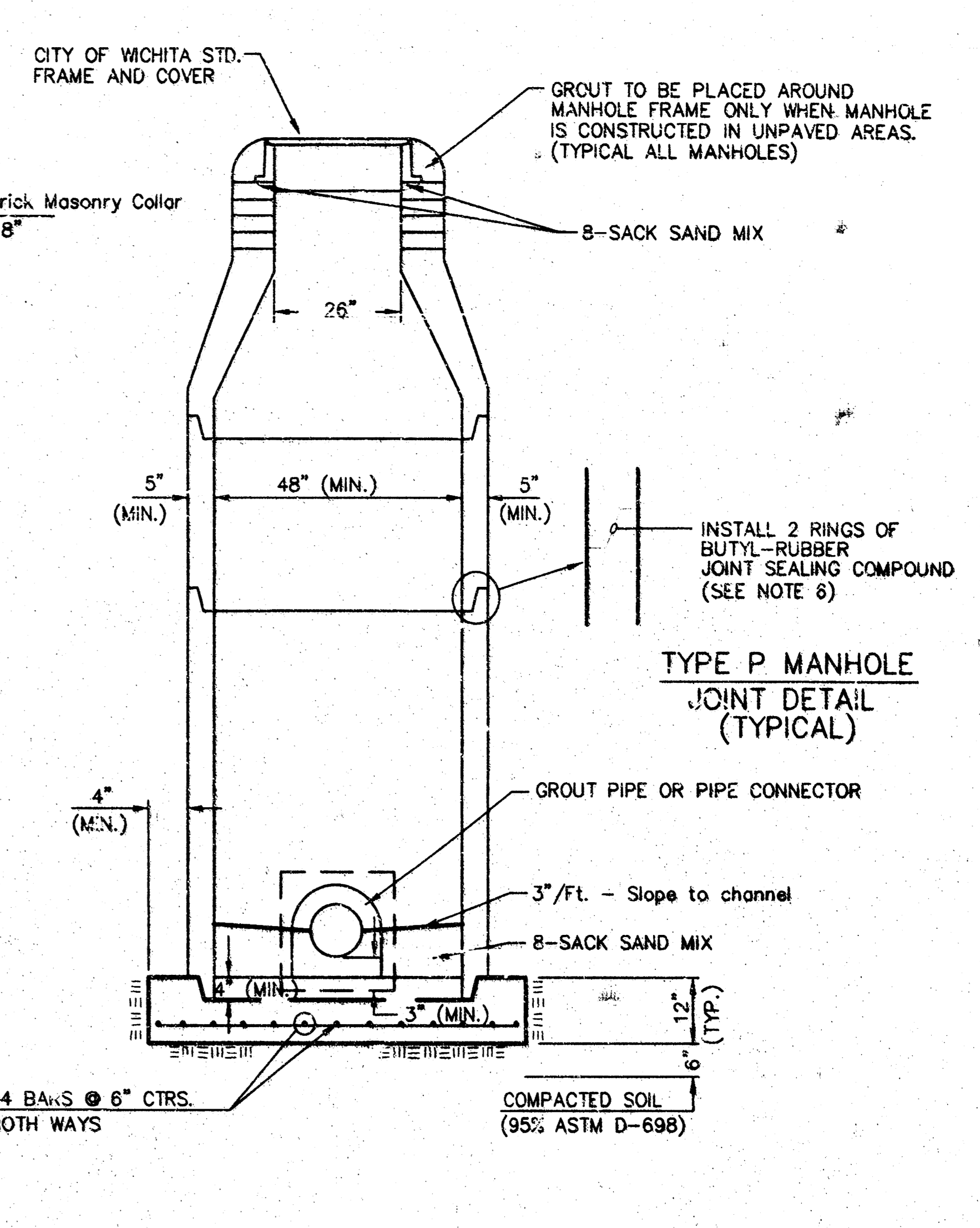
TYPE P STANDARD MANHOLE



TYPE P INSIDE DROP MANHOLE



TYPE P OUTSIDE DROP MANHOLE



SECTION X (TYPICAL)

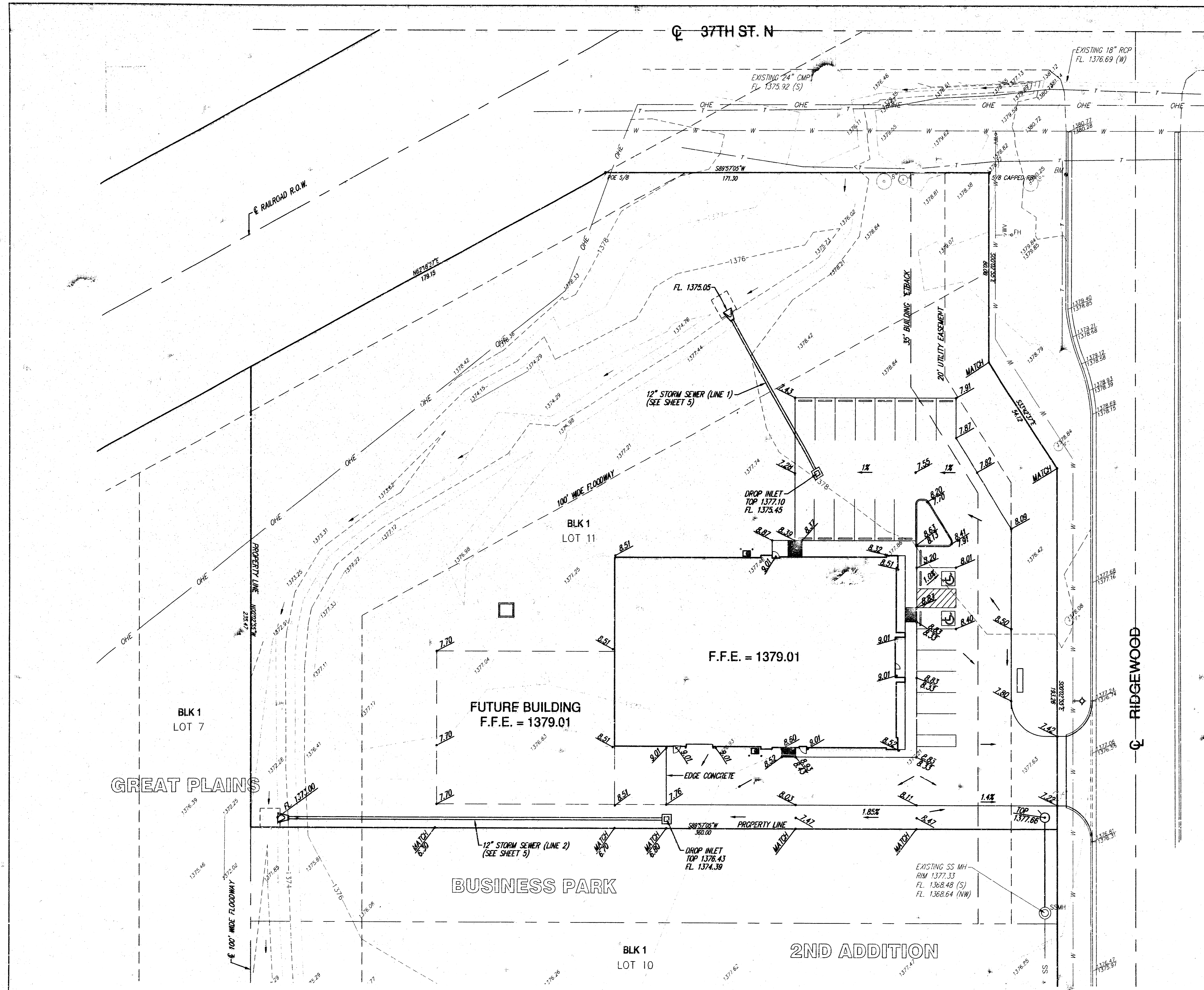
GENERAL NOTES
PRECAST MANHOLE NOTES

- ALL PRECAST CONCRETE MANHOLE SECTIONS SHALL CONFORM TO THE LATEST REVISIONS OF A.S.T.M. C478 AS MODIFIED BY THE SPECIFICATIONS.
- NON-SHRINK GROUT SHALL BE NON-METALLIC TYPE.
- APPROVED FLEXIBLE WATERSTOP GASKETS SHALL BE INSTALLED TO JOIN THE SEWER TO THE MANHOLE WALL WHEN A.B.S. COMPOSITE PIPE OR P.V.C. PIPE IS USED. FOR OTHER TYPES OF PIPE THE SEWER SHALL BE GROUTED IN PLACE WITH NON-SHRINK GROUT. THE SEWER PIPE SHALL BE SUPPORTED WITH CONCRETE ENCASEMENT A MINIMUM OF 3 FEET FROM THE MANHOLE WALL AND TO THE FIRST JOINT FOR V.C.P. SUCH THAT THE JOINT REMAINS FLEXIBLE.
- ALL INSIDE SURFACES OF THE CONCRETE MANHOLE WHICH WOULD BE EXPOSED TO SEWER GAS SHALL BE COATED WITH 2 COATS INEMEC SERIES 66 HI-BUILD EPOXYLINE, DRY THICKNESS OF 8 MILS. (MIN.)
- EXTERIOR MANHOLE WALLS SHALL BE COATED WITH 1 COAT MOBILARMA 633 BITUMINOUS COATING.
- JOINT SEALING COMPOUND SHALL BE KENT SEAL NO. 2 OR APPROVED EQUAL.
- PRECAST MANHOLES SHALL BE SET AT LEAST 4 INCHES INTO THE MANHOLE BASE.
- TOP OF MANHOLE FLOOR SLAB SHALL BE AT LEAST 3 INCHES BELOW THE FLOW LINE OF THE OUTLET PIPE TO INSURE SUFFICIENT MINIMUM THICKNESS OF SHAPED INVERT.
- LIFTING HOLES SHALL BE FILLED WITH NON-SHRINK GROUT AND THE INTERIOR SURFACE COATED AS SPECIFIED.
- MORTAR USED IN MASONRY CONSTRUCTION SHALL CONTAIN 8 SACKS OF CEMENT PER CUBIC YARD. CONCRETE USED IN MANHOLE BASES SHALL CONFORM TO THE REQUIREMENTS OF CONCRETE FOR CONCRETE PAVEMENT CONSTRUCTION AS SPECIFIED IN THE CITY STANDARD PAVING SPECIFICATIONS USING CITY CONCRETE PAVEMENT MIX WITHOUT AIR ENTRAINING ADMIXTURE. MORTAR SHALL BE PLACED AROUND THE MANHOLE RING AS SHOWN ON THE DRAWINGS WHEN MANHOLES ARE CONSTRUCTED IN UNPAVED AREAS. MANHOLES CONSTRUCTED WHERE PIPE SIZES ARE SMALLER THAN 24" SHALL HAVE AN INSIDE DIAMETER OF 4". MANHOLES CONSTRUCTED WHERE PIPE SIZES ARE 24" OR LARGER SHALL HAVE AN INSIDE DIAMETER OF 5". COMPLETED MANHOLE SHALL BE WITHOUT LEAKS AND WATER TIGHT.

- REINFORCING STEEL SHALL BE INSTALLED IN THE MANHOLE BASES AND SHALL CONSIST OF NO. 4 BARS PLACED ON 6" CENTERS IN BOTH DIRECTIONS. THE MANHOLE BASE REINFORCEMENT SHALL BE PLACED AT LEAST 3" ABOVE THE BOTTOM OF THE MANHOLE BASE. ALL COSTS FOR FURNISHING AND INSTALLING REINFORCING STEEL SHALL BE INCLUDED IN THE UNIT PRICE BID FOR THE MANHOLE.
- OPENINGS SHALL BE CUT INTO THE MANHOLE WALL WHEN OUTSIDE DROPS ARE CONSTRUCTED ON EXISTING MANHOLES. SUCH OPENINGS CUT INTO EXISTING MANHOLES SHALL BE AS SMALL AS PRACTICAL TO FACILITATE INSTALLING AND GROUTING THE NEW PIPE IN PLACE. WATERSTOP GASKETS SHALL BE USED WITH P.V.C. AND A.B.S. COMPOSITE PIPE. THE NEW PIPE SHALL BE GROUTED INTO THE OPENING USING AN APPROVED NONSHRINK GROUT FOR THE FULL MANHOLE WALL THICKNESS. THE EXTERIOR OF THE COMPLETED CONNECTION SHALL BE SEALED WITH AN APPROVED BITUMINOUS COATING SUCH THAT THE CONNECTION WILL BE WATER TIGHT. FLOOR OF MANHOLE SHALL BE MODIFIED TO FORM NEW FLOW CHANNEL FOR THE NEW CONNECTION AS INDICATED BY THE DRAWING. THIS WORK, INCLUDING MODIFICATION OF MANHOLE FLOOR, SHALL BE PAID FOR AT THE UNIT PRICE BID FOR OUTSIDE DROP STACK CONSTRUCTED ON EXISTING MANHOLE.
- THE FLOORS OF ALL MANHOLES SHALL BE SHAPED WITH FLOW CHANNELS SUCH THAT THE MANHOLES WILL BE SELF-CLEANING AND FREE OF AREAS WHERE SOLIDS COULD BE DEPOSITED AS SEWAGE FLOWS THROUGH THE MANHOLE FROM ALL INLET PIPES TO THE OUTLET PIPE. FLOW CHANNELS SHALL BE FORMED TO MATCH THE BOTTOM HALVES OF THE INFLOWING PIPES AND THE OUTFLOWING PIPE AS SHOWN BY THE DRAWINGS EXCEPT FOR INSIDE DROP MANHOLES. FLOW CHANNELS FOR INSIDE DROP MANHOLES SHALL BE CONSTRUCTED AS INDICATED BY THE DRAWING. MANHOLE FLOORS SHALL HAVE SLOPES OF 3 INCHES PER FOOT IN THE AREAS OUTSIDE OF THE FLOW CHANNELS SLOPED TOWARD THE FLOW CHANNELS. PIPES LAID THROUGH MANHOLES SHALL HAVE THE TOP HALF REMOVED TO NEAT LINES FOR THE FULL INSIDE DIAMETER OF THE MANHOLE. MANHOLE FLOORS SHALL THEN BE SHAPED AROUND THE BOTTOM HALF OF THE PIPE WHICH FORMS THE FLOW CHANNEL.
- PIPES INSTALLED WITHIN THE EXCAVATION MADE FOR THE MANHOLE SHALL BE CRADLED WITH CONCRETE TO THE LIMITS OF THE MANHOLE EXCAVATION. WHEN CLAY PIPE IS USED, THE CRADLE SHALL EXTEND TO THE FIRST JOINT OUTSIDE THE MANHOLE. THE CRADLE SHALL BE TERMINATED AT THE CLAY PIPE JOINT IN A MANNER WHICH WILL MAINTAIN THE FLEXIBILITY OF THE JOINT. COST OF CRADLE WITHIN MANHOLE EXCAVATION OR TO CLAY PIPE JOINTS ADJACENT TO MANHOLE SHALL BE INCLUDED IN THE UNIT PRICE BID FOR THE MANHOLE.

- MANHOLE COVER CASTINGS AND MANHOLE FRAME CASTINGS SHALL CONFORM TO THE REQUIREMENTS AS INDICATED IN THE STANDARD SPECIFICATIONS AND AS SHOWN IN THE STANDARD DETAIL DRAWING.
- THE VERTICAL DROP IN INSIDE DROP MANHOLES SHALL NOT EXCEED 2' FOR INFLOWING PIPES SIZED 12" OR SMALLER AND 2' FOR INFLOWING PIPES LARGER THAN 12". THE CROWNS OF INFLOWING PIPES SHALL NEVER BE SET LOWER THAN THE CROWN OF THE OUTFLOWING PIPE.
- STANDARD MANHOLES AND STANDARD INSIDE DROP MANHOLES SHALL BE BID AS STANDARD MANHOLES FOR THE TYPE AND DIAMETER INDICATED. OUTSIDE DROP MANHOLES SHALL BE BID AS STANDARD OUTSIDE DROP MANHOLES FOR THE TYPE AND DIAMETER INDICATED. ALL MANHOLE DIAMETERS WILL BE 4' UNLESS INDICATED OTHERWISE.
- A BRICK MASONRY COLLAR SHALL BE INSTALLED BETWEEN THE CAST IRON FRAME AND THE CONCENTRIC CONE. THE COLLAR WILL HAVE 8" WALLS AND A VERTICAL HEIGHT OF 6" MINIMUM AND 18" MAXIMUM. A 1" COAT OF MORTAR WILL BE PLASTERED ON THE OUTSIDE OF THE COLLAR. THE USE OF PRE-CAST CONCRETE SPACERS FOR MANHOLE TOP ADJUSTMENT IS ALSO ALLOWED.

<p>THE CITY OF WICHITA</p> <p>CITY ENGINEER'S OFFICE CITY HALL - SEVENTH FLOOR 433 NORTH MAIN STREET WICHITA, KANSAS 67202 (316) 268-4001 (316) 268-4114 FAX</p>	<p>STANDARD TYPE 'P' MANHOLES</p>	
	<p>M. E. LINDEBAK P.E. - CITY ENGINEER</p>	
<p>PROJECT NUMBER 1333 PPS</p>	<p>DATE MAR 96</p>	
<p>CITY # 607861</p>	<p>SHEET 3 OF 6</p>	



BENCHMARKS

COW BM (DISC) OLIVER & 37TH N.
 SW COR HUBGLIARD 100' ± E. OF OLIVER
 ON 37TH ST. N. ELEV. 1374.24
 * □ T.C. E. OF NE COR LOT 11, BLK 1
 GREAT PLAINS BUS. PARK, 2ND ADDITION
 ELEV. 1380.50


LEGAL DESCRIPTION

LOT 11, BLOCK 1, GREAT PLAINS BUSINESS PARK
 2nd ADDITION, EXCEPT THE SOUTH 40 FEET
 THEREOF, WICHITA, SEDGWICK COUNTY, KANSAS.



SCALE: 1"=20'

LOT 11, BLK 1, GREAT PLAINS BUSINESS PARK 2ND ADD.
 SITE GRADING PLAN
 WICHITA, KANSAS

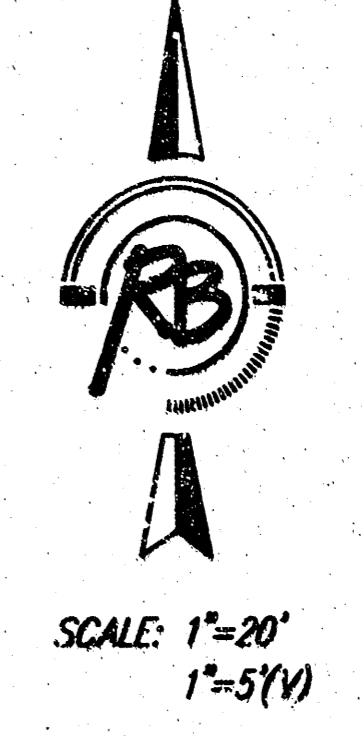
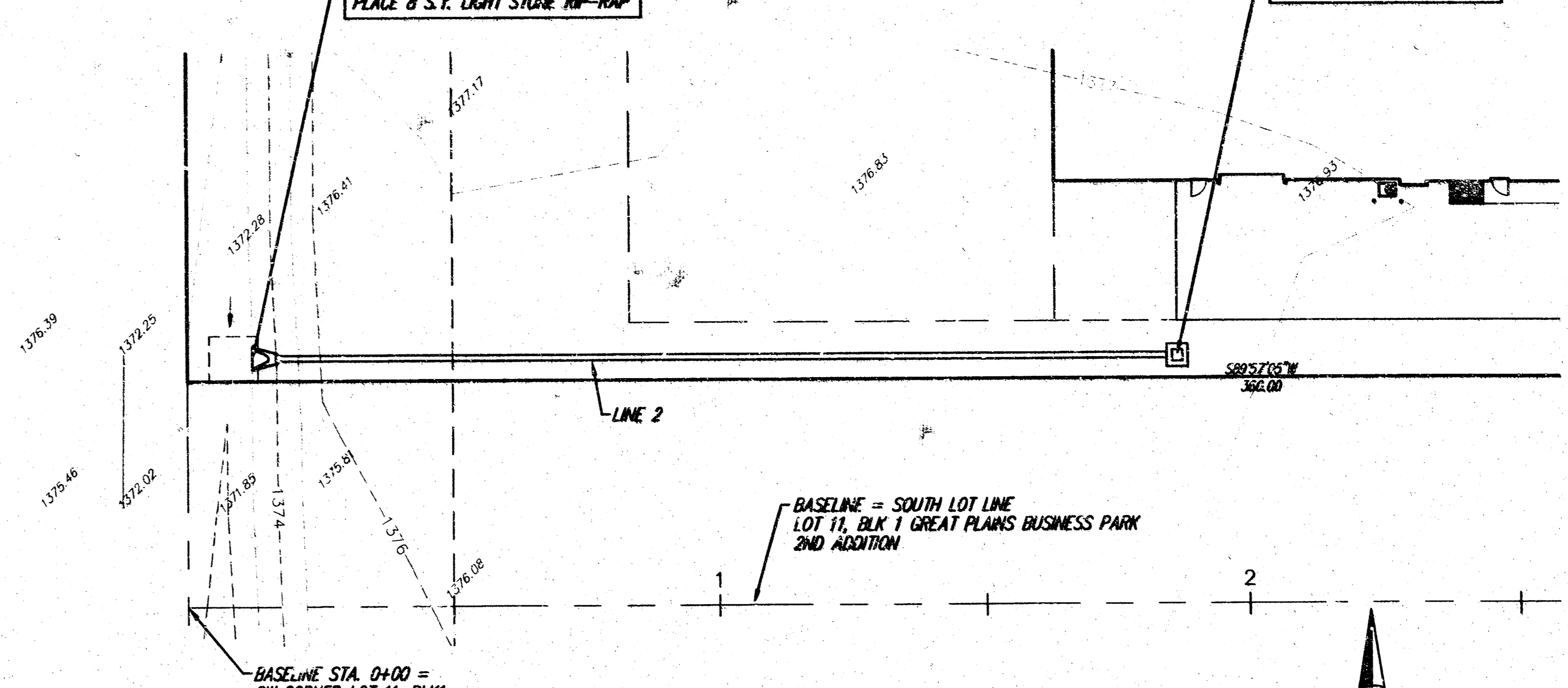
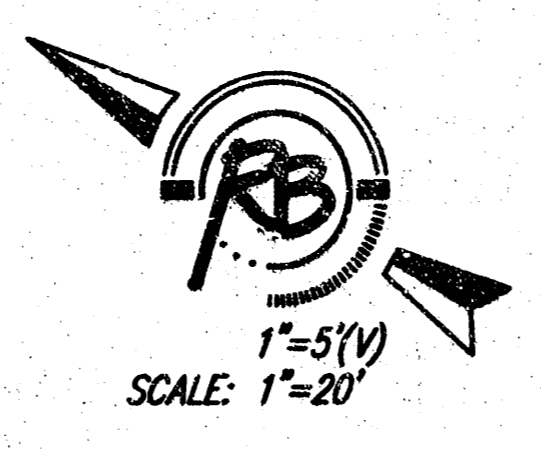
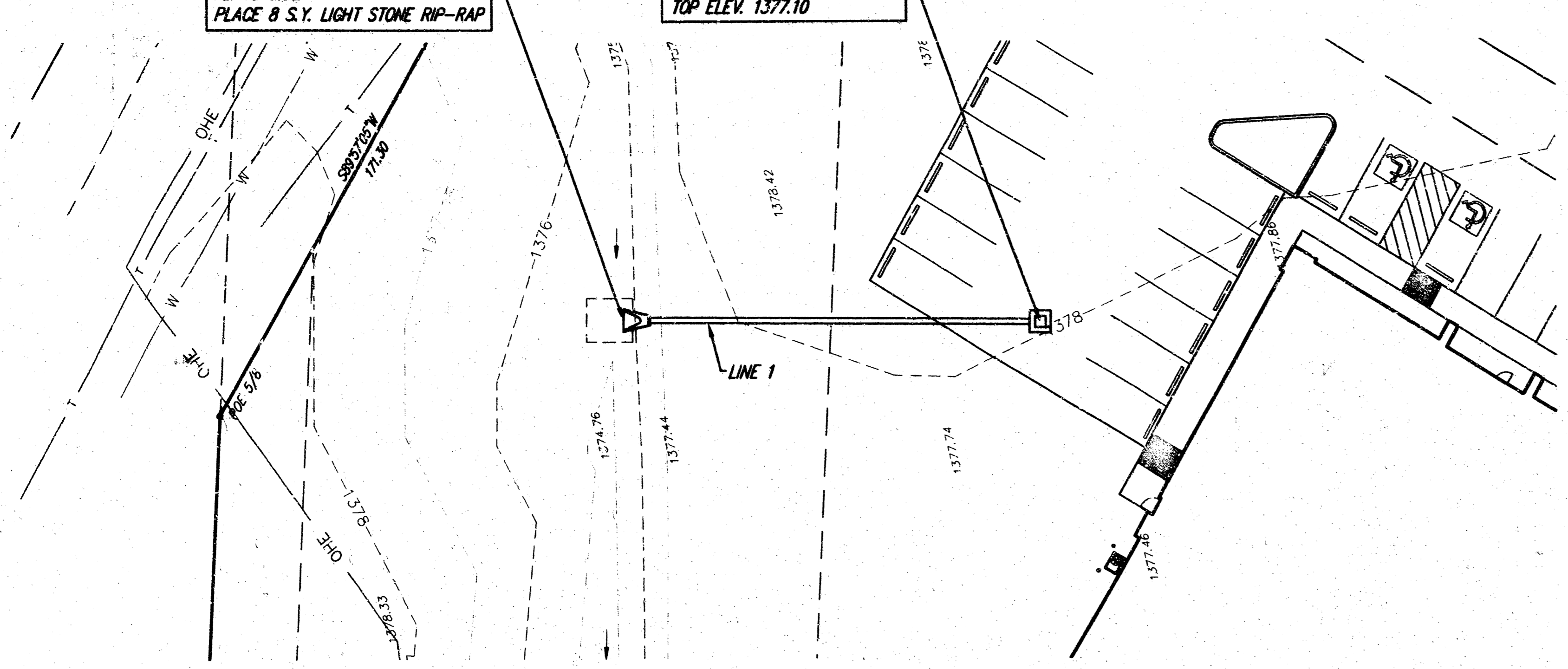
 Ruggles & Bohm, P.A. Engineering, Surveying, Land Planning 924 North Main Wichita, Kansas 67203 www.rbkansas.com (316) 284-8008 (316) 284-4621 fax E-mail: info@rbkansas.com	DESIGN TOR	SHEET 4 OF 6
	DRAWN EJB	
DRAWING FILE Base [Grading]	PROJECT NUMBER 1333 PPS 607861	DATE Apr. 14, 2003

STA. 0+00 LINE 1
 DL. STA. 2+13.04 260.20' LT.
 INSTALL 12" RCP END SECTION
 FL. 1373.05
 PLACE 8 S.Y. LIGHT STONE RIP-RAP

STA. 0+80 END LINE 1
 BL. STA. 2+53.10 190.95' LT.
 INSTALL DROP INLET
 TOP ELEV. 1377.10

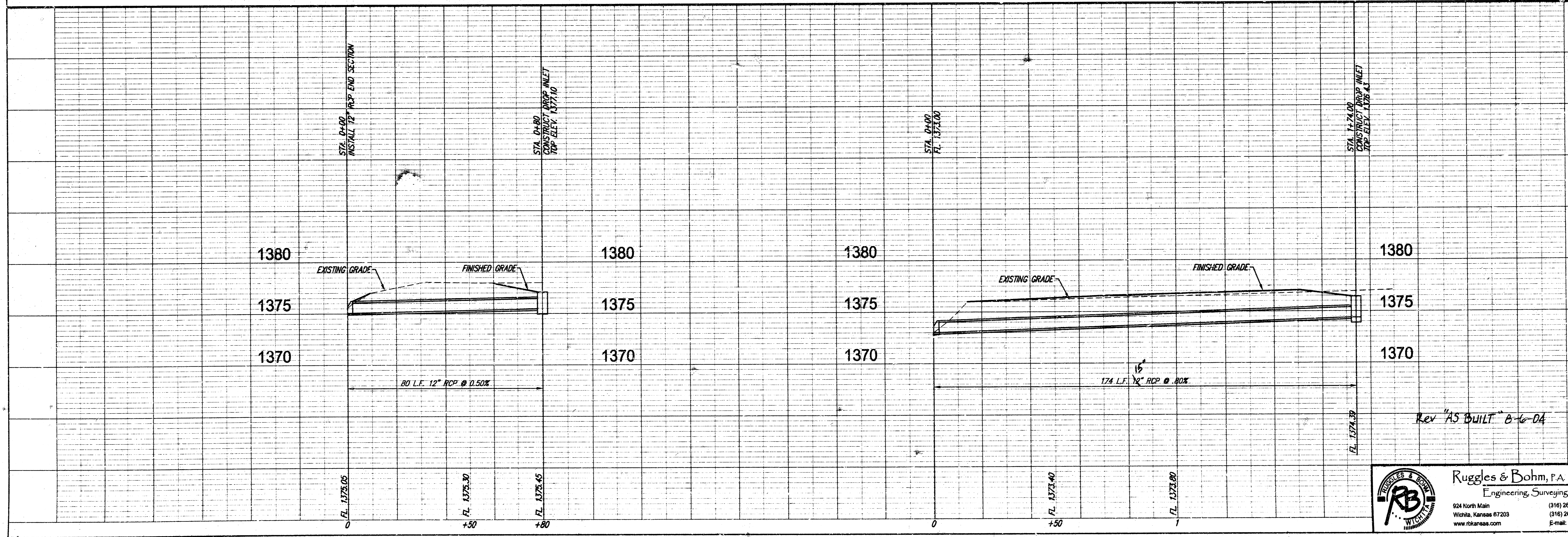
STA. 0+00 LINE 2 =
 BL. STA. 0+12.00 44' LT.
 INSTALL 18" RCP END SECTION
 FL. 1373.00
 PLACE 8 S.Y. LIGHT STONE RIP-RAP

STA. 1+74.00 END LINE 2 =
 BL. STA. 1+86.12 44' LT.
 INSTALL DROP INLET
 TOP ELEV. 1376.43

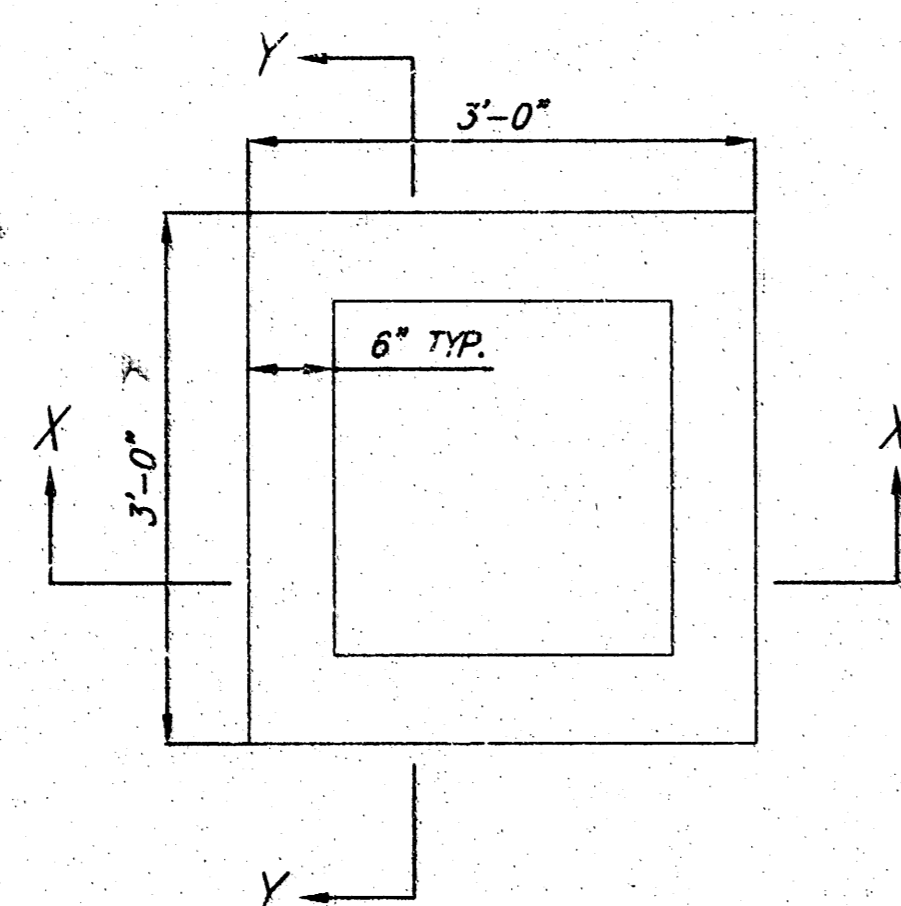


LINE 1

LINE 2

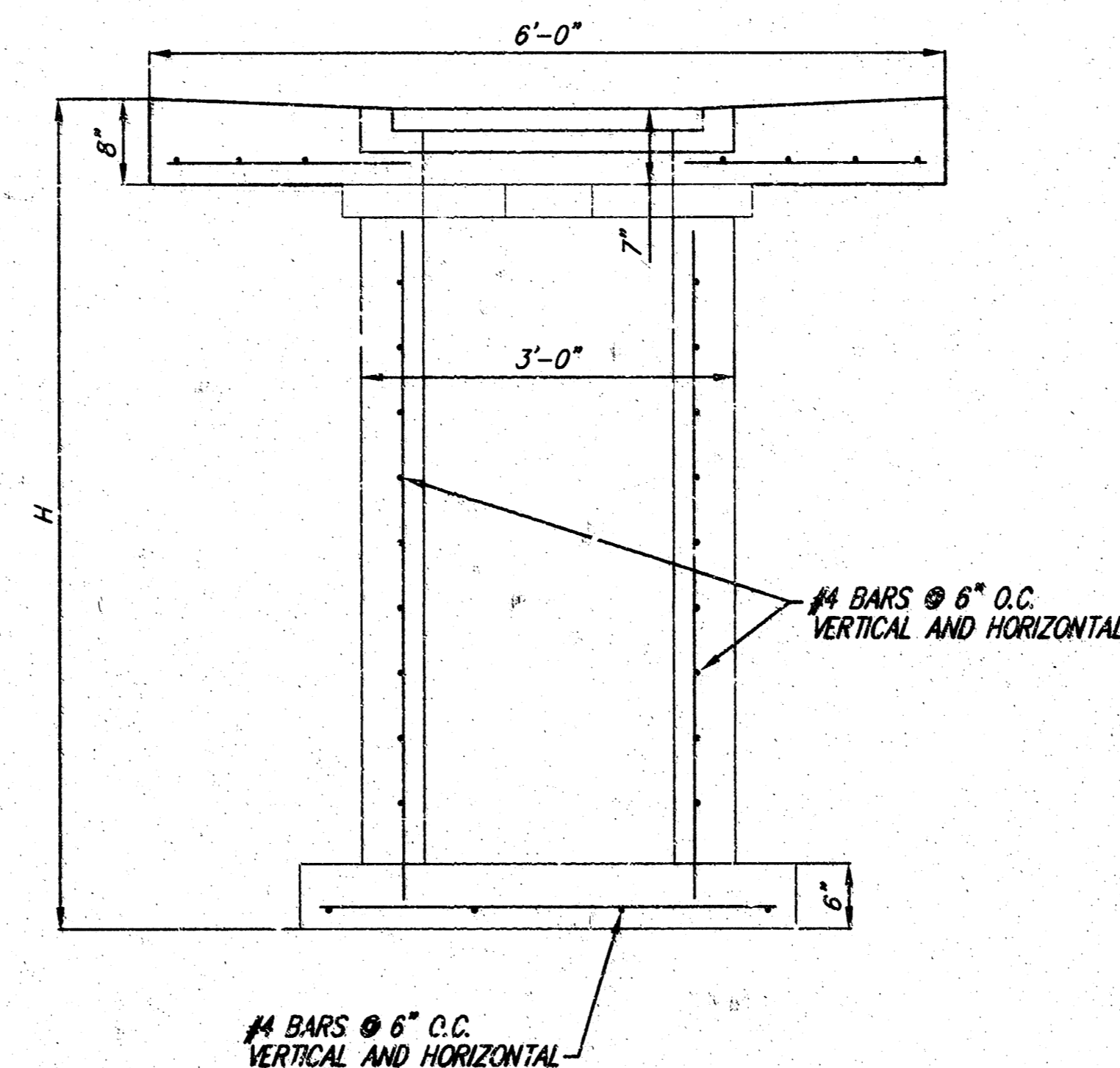


DESIGNED E.B.	DATE Apr. 14, 2003
DRAWN TJR	UTILITY
PROJECT NUMBER 1333 PPS 607861	DRAWING TITLE Base [Storm Sewer]
LOT 11, BLK 1, GREAT PLAINS BUSINESS PARK 2ND ADD. STORM SEWER PLAN & PROFILE WICHITA, KANSAS	
Rev "AS BUILT" 8-6-04	
Ruggles & Bohm, P.A. Engineering, Surveying, Land Planning 904 North Main Wichita, Kansas 67203 www.rtkansas.com (316) 264-8008 (316) 264-4621 fax E-mail: info@rtkansas.com	

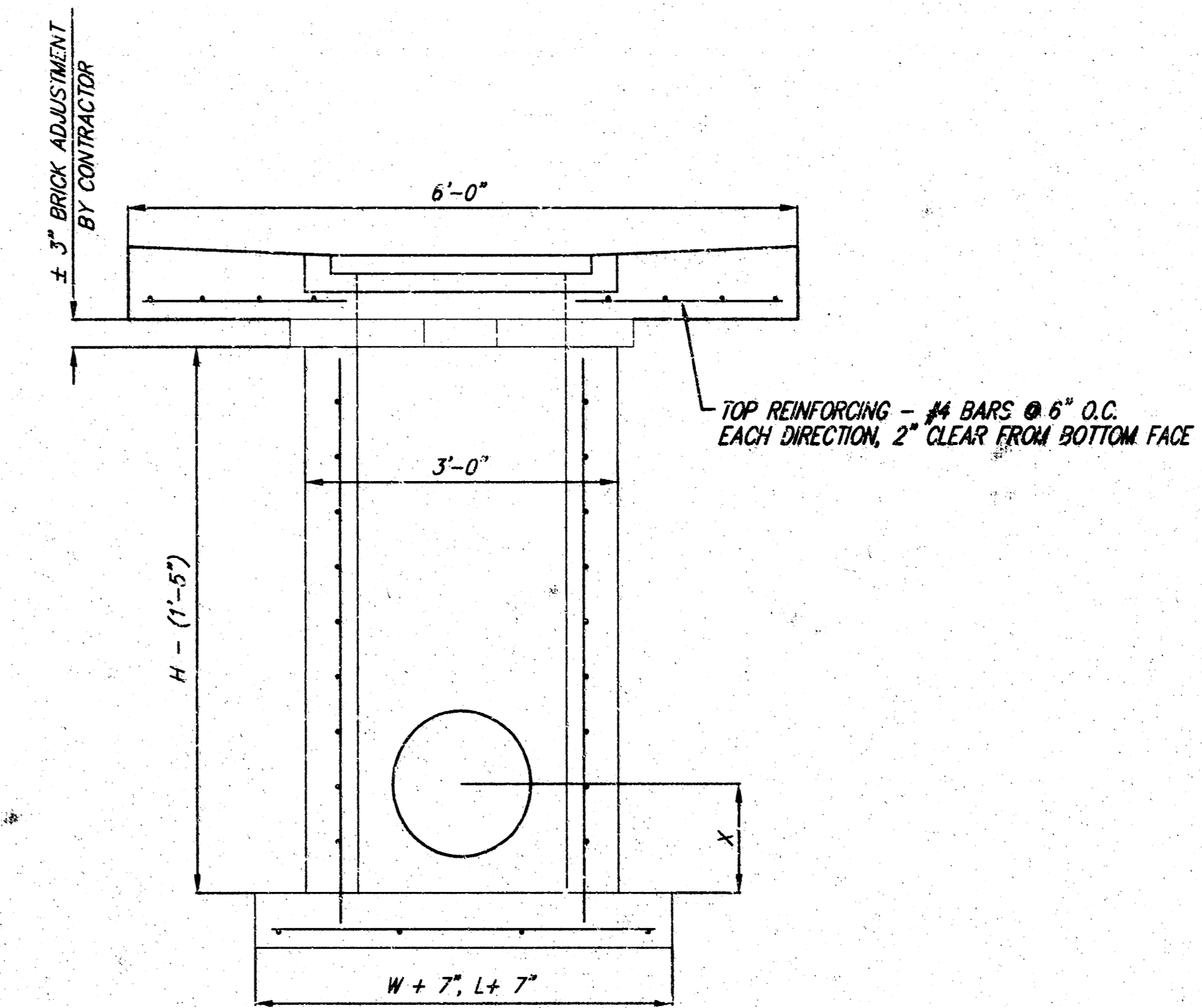


PLAN

NOTE: FRAME AND GRATE TO BE DEETER FOUNDRY 2410 OR APPROVED EQUAL. INLET MAY BE PRECAST OR CAST-IN-PLACE.



SECTION X-X




SECTION Y-Y

DROP INLET DETAIL

GENERAL NOTES:

- MORTAR USED IN MASONRY CONSTRUCTION SHALL CONTAIN 8 SACKS OF CEMENT PER CUBIC YARD. CONCRETE USED IN INLET WALLS AND BASES SHALL CONFORM TO THE REQUIREMENTS FOR CONCRETE PAVEMENT CONSTRUCTION AS SPECIFIED IN THE CITY STANDARD PAVING SPECIFICATIONS, USING CITY CONCRETE PAVEMENT MIX WITHOUT AIR ENTRAINING ADMIXTURE. MORTAR SHALL BE PLACED AROUND THE INLET FRAME AS SHOWN ON THE DRAWINGS WHEN INLETS ARE CONSTRUCTED IN UNPAVED AREAS. COMPLETED INLET SHALL BE WITHOUT LEAKS AND WATER TIGHT.
- THE FLOORS OF ALL INLETS SHALL BE SHAPED WITH FLOW CHANNELS SUCH THAT THE INLETS WILL BE SELF CLEANING. USING 8-SACK SAND MIX CONCRETE. FLOW CHANNELS SHALL BE FORMED TO MATCH THE BOTTOM HALVES OF THE INFLOWING PIPES AND THE OUTFLOWING PIPE. INLET FLOORS SHALL HAVE SLOPES OF 3 INCHES PER FOOT IN THE AREAS OUTSIDE OF THE FLOW CHANNELS SLOPED TOWARD THE FLOW CHANNELS.
- INLET COVER CASTINGS AND INLET FRAME CASTINGS SHALL CONFORM TO THE REQUIREMENTS AS INDICATED IN THE STANDARD SPECIFICATIONS AND AS SHOWN IN THE STANDARD DETAIL DRAWING.
- THE ENDS OF ALL PIPES IN INLETS SHALL BE CUT OFF FLUSH WITH THE INSIDE FACE OF INLET WALL.

LOT 11, BLK 1, GREAT PLAINS BUSINESS PARK 2ND ADD.
 DROP INLET DETAILS
 WICHITA, KANSAS

	Ruggles & Bohm, P.A. Engineering, Surveying, Land Planning		DESIGN: TOR	SHEET
	924 North Main Wichita, Kansas 67203 www.rbkansas.com		(316) 264-8008 (316) 264-4621 fax E-mail: info@rbkansas.com	
DRAWING FILE: Base {Drop Inlet}		PROJECT NUMBER: 1333 PPS 607861	UTILITY: DATE: Apr. 14, 2003	REVIEW: 6 OF 6