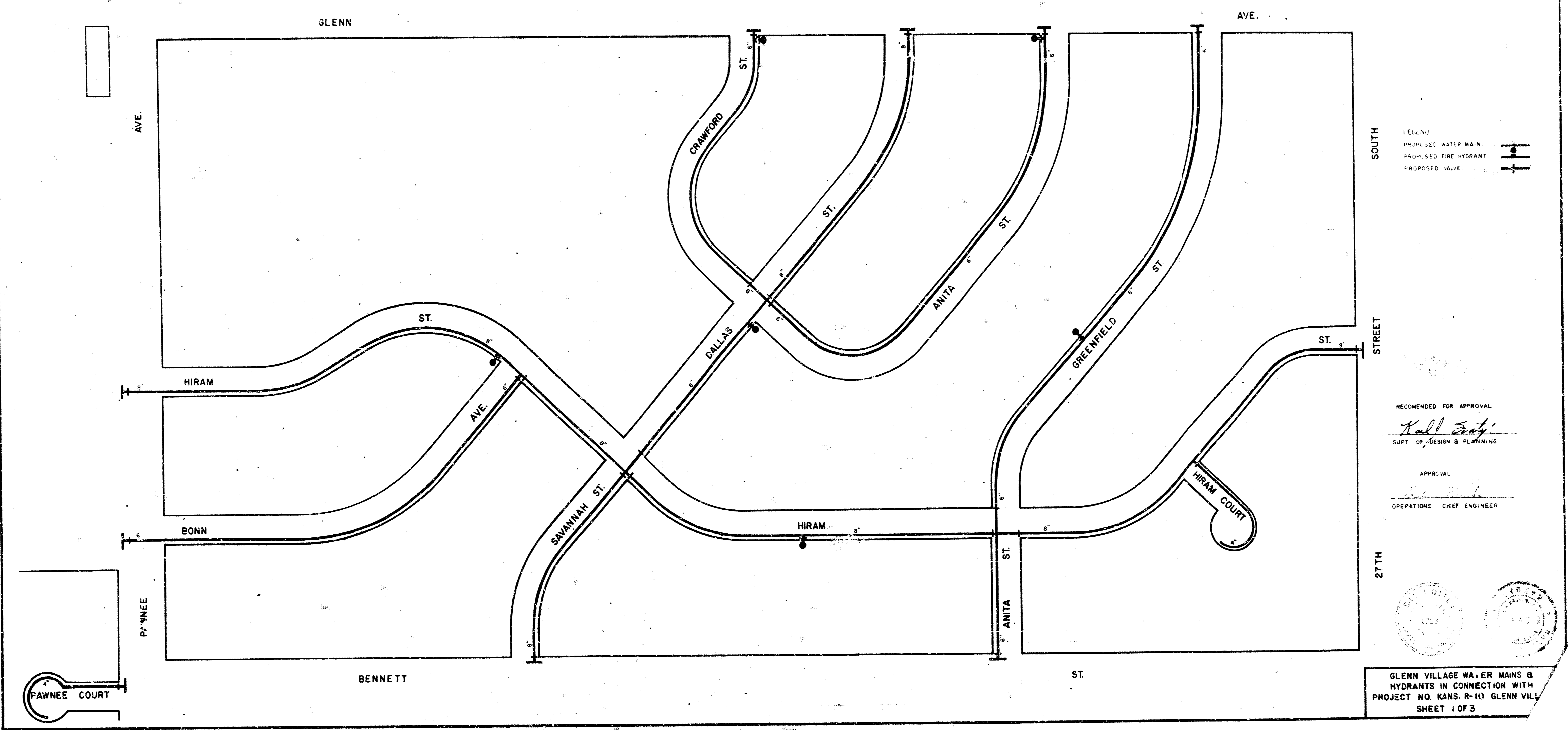
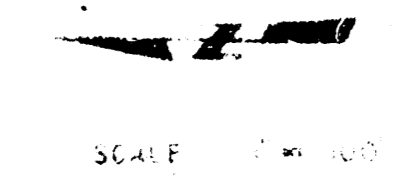


PLANS FOR  
**WATER MAINS & HYDRANTS**  
 IN  
**GLENN VILLAGE**  
 IN CONNECTION WITH  
 PROJECT NO. KANS. R-10 GLENN VILLAGE  
**URBAN RENEWAL AGENCY**  
 OF THE  
**WICHITA, KANSAS METROPOLITAN AREA**



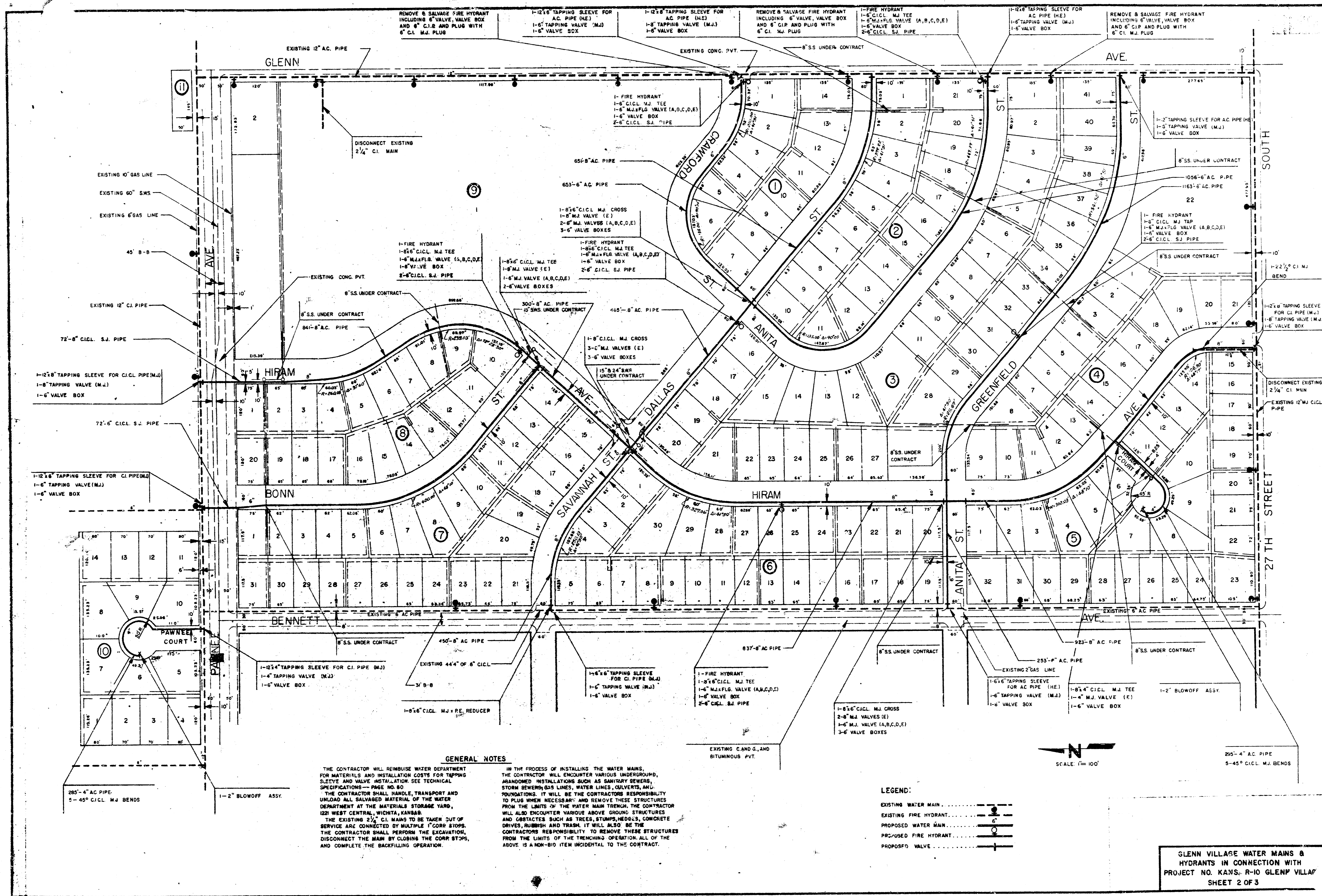
LEGEND  
 PROPOSED WATER MAIN  
 PROPOSED FIRE HYDRANT  
 PROPOSED VALVE

RECOMMENDED FOR APPROVAL  
*Karl E. [Signature]*  
 SUPT. OF DESIGN & PLANNING

APPROVAL  
 OPERATIONS CHIEF ENGINEER



GLENN VILLAGE WATER MAINS & HYDRANTS IN CONNECTION WITH PROJECT NO. KANS. R-10 GLENN VILLAGE SHEET 1 OF 3



**GENERAL NOTES**

THE CONTRACTOR WILL REIMBURSE WATER DEPARTMENT FOR MATERIALS AND INSTALLATION COSTS FOR TAPPING SLEEVES AND VALVE INSTALLATION. SEE TECHNICAL SPECIFICATIONS - PAGE NO. 80.

THE CONTRACTOR SHALL HANDLE, TRANSPORT AND UNLOAD ALL SALVAGED MATERIALS OF THE WATER DEPARTMENT AT THE MATERIALS STORAGE YARD, 1221 WEST CENTRAL, WICHITA, KANSAS.

THE EXISTING 3/2" CI MAINS TO BE TAKEN OUT OF SERVICE ARE CONNECTED BY MULTIPLE 1" CORP STOPS. THE CONTRACTOR SHALL PERFORM THE EXCAVATION, DISCONNECT THE MAIN BY CLOSING THE CORP STOPS, AND COMPLETE THE BACKFILLING OPERATION.

IN THE PROCESS OF INSTALLING THE WATER MAINS, THE CONTRACTOR WILL ENCOUNTER VARIOUS UNDERGROUND, UNRECORDED INSTALLATIONS SUCH AS SANITARY SEWERS, STORM SEWERS, GAS LINES, WATER LINES, SILVERETS, AND FOUNDATIONS. IT WILL BE THE CONTRACTOR'S RESPONSIBILITY TO PLUG WHEN NECESSARY AND REMOVE THESE STRUCTURES FROM THE LIMITS OF THE WATER MAIN TRENCH. THE CONTRACTOR WILL ALSO ENCOUNTER VARIOUS ABOVE GROUND STRUCTURES AND OBSTACLES SUCH AS TREES, STUMPS, MEDICALS, CONCRETE DRIVES, RUBBER AND TRUNKS. IT WILL ALSO BE THE CONTRACTOR'S RESPONSIBILITY TO REMOVE THESE STRUCTURES FROM THE LIMITS OF THE TRENCHING OPERATION. ALL OF THE ABOVE IS A NON-BID ITEM INCIDENTAL TO THE CONTRACT.

**LEGEND:**

EXISTING WATER MAIN

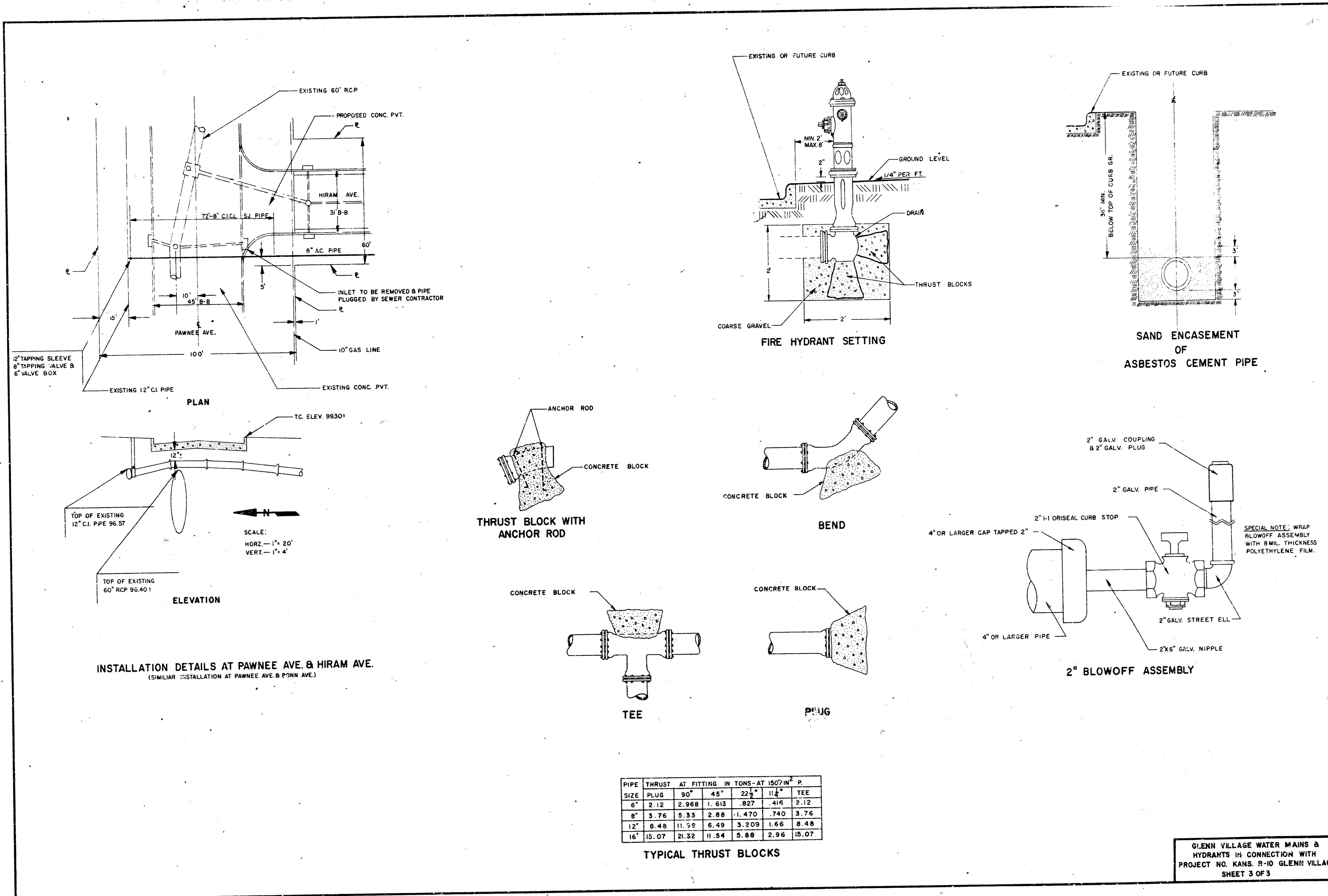
EXISTING FIRE HYDRANT

PROPOSED WATER MAIN

PROPOSED FIRE HYDRANT

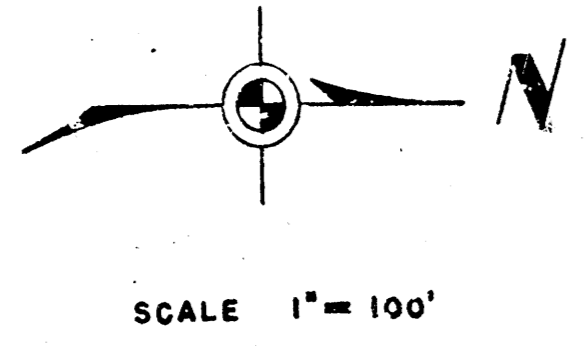
PROPOSED VALVE

GLENN VILLAGE WATER MAINS & HYDRANTS IN CONNECTION WITH PROJECT NO. KANS. R-10 GLENN VILLAGE SHEET 2 OF 3



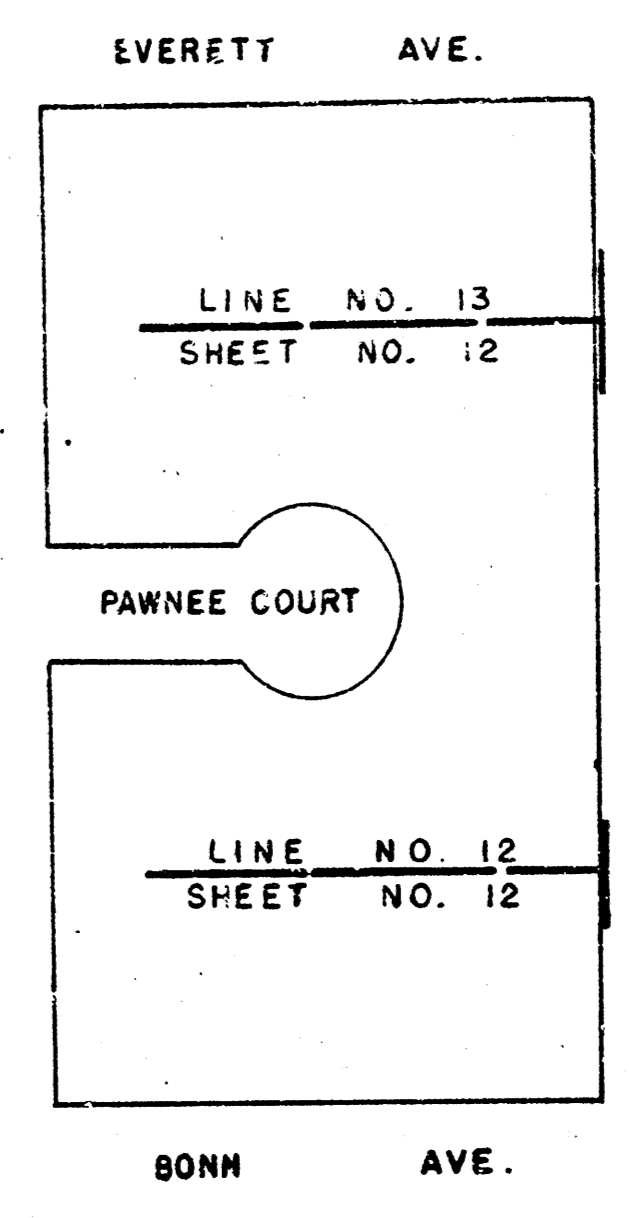
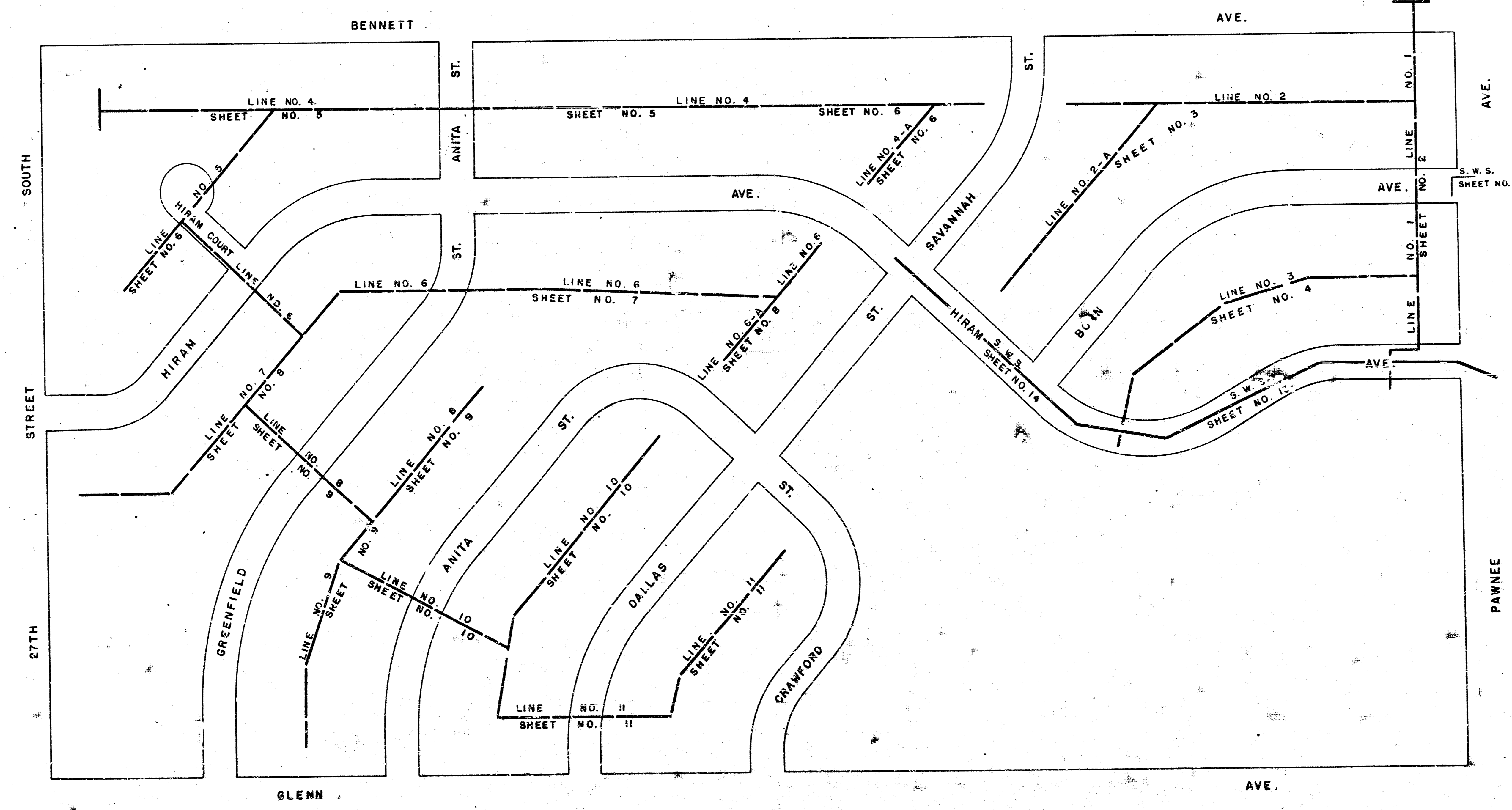
PLANS FOR  
**SANITARY SEWERS & STORM WATER SEWERS**  
 IN  
**GLENN VILLAGE**

IN CONNECTION WITH  
 PROJECT NO. KANS. R-10 GLENN VILLAGE  
**URBAN RENEWAL AGENCY**  
 OF THE  
 WICHITA, KANSAS METROPOLITAN AREA

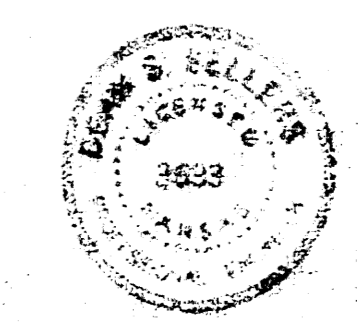


SCALE 1" = 100'

Survey by J. F. G. BK. NO. J.F.G. 75  
 Drawn by J. W. BK. NO. J.F.G. 76  
 Checked by J. J. DATE:

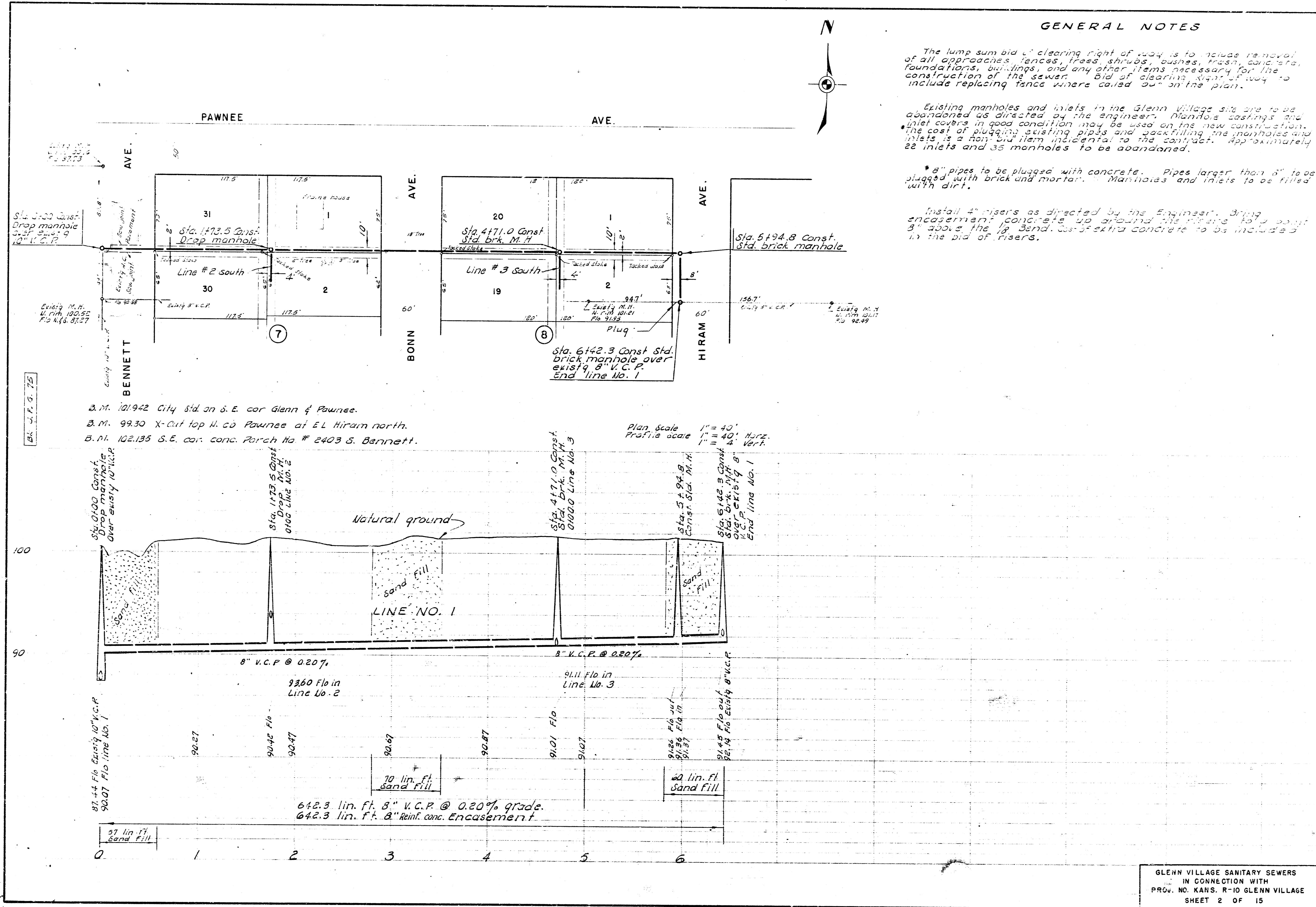


*B. E. Smith* 4-6-67  
 B. E. SMITH  
 CITY ENGINEER DATE



GLENN VILLAGE SANITARY SEWERS  
 IN CONNECTION WITH  
 PROJ. NO. KANS. R-10 GLENN VILLAGE  
 SHEET 1 OF 15





**GENERAL NOTES**

The lump sum bid of clearing right of way is to include removal of all approaches, fences, trees, shrubs, bushes, grass, concrete, foundations, buildings, and any other items necessary for the construction of the sewer. Bid of clearing right of way to include replacing fence where called for on the plan.

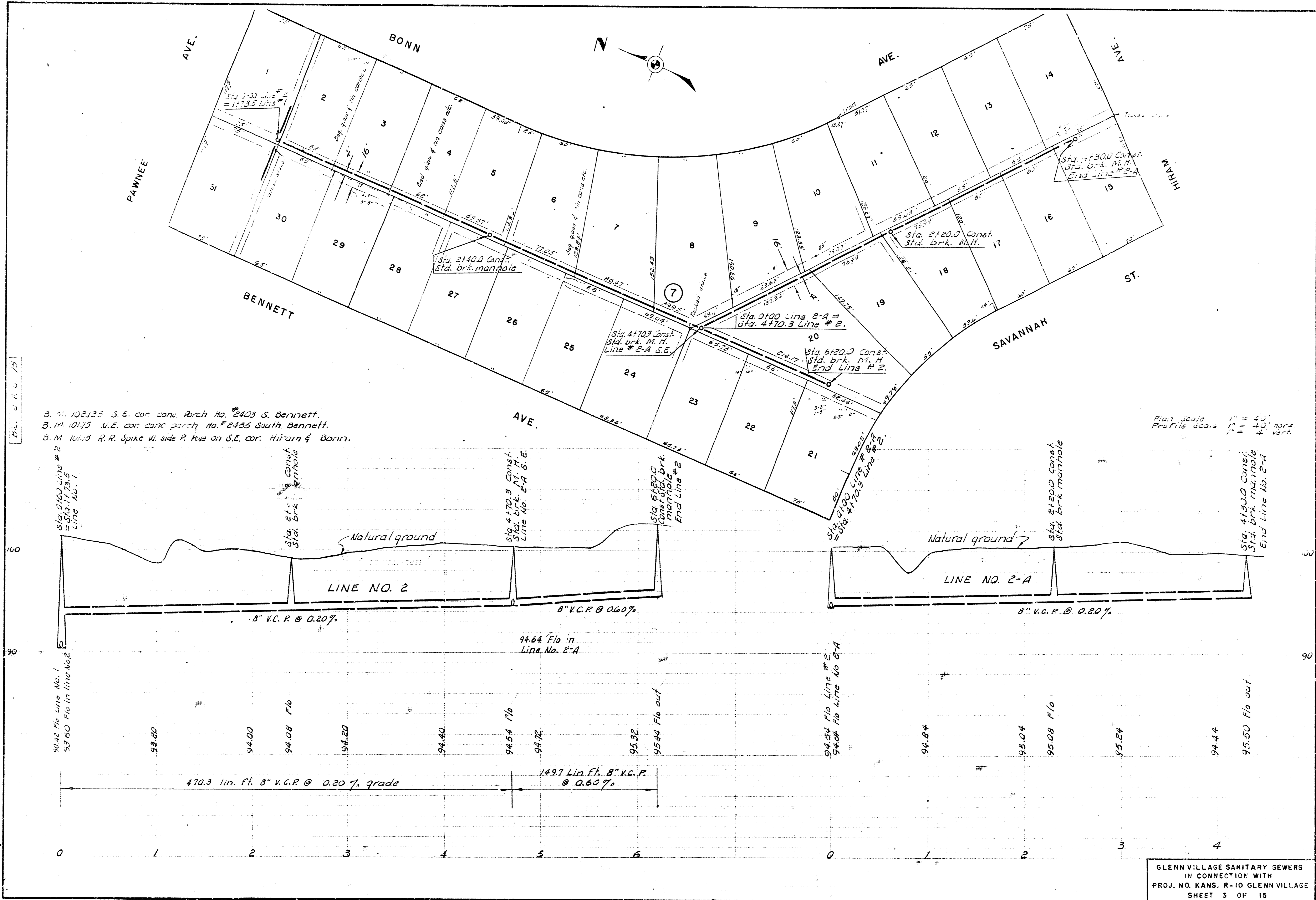
Existing manholes and inlets in the Glenn Village site are to be abandoned as directed by the engineer. Manhole castings and inlet covers in good condition may be used on the new construction. The cost of plugging existing pipes and backfilling the manholes and inlets is a non-item incidental to the contract. Approximate 22 inlets and 35 manholes to be abandoned.

8" pipes to be plugged with concrete. Pipes larger than 8" to be plugged with brick and mortar. Manholes and inlets to be filled with dirt.

Install 4" risers as directed by the Engineer. Bring encasement concrete up around the risers 10" above 3" above the 1/2 bend. Cost of extra concrete to be included in the bid of risers.

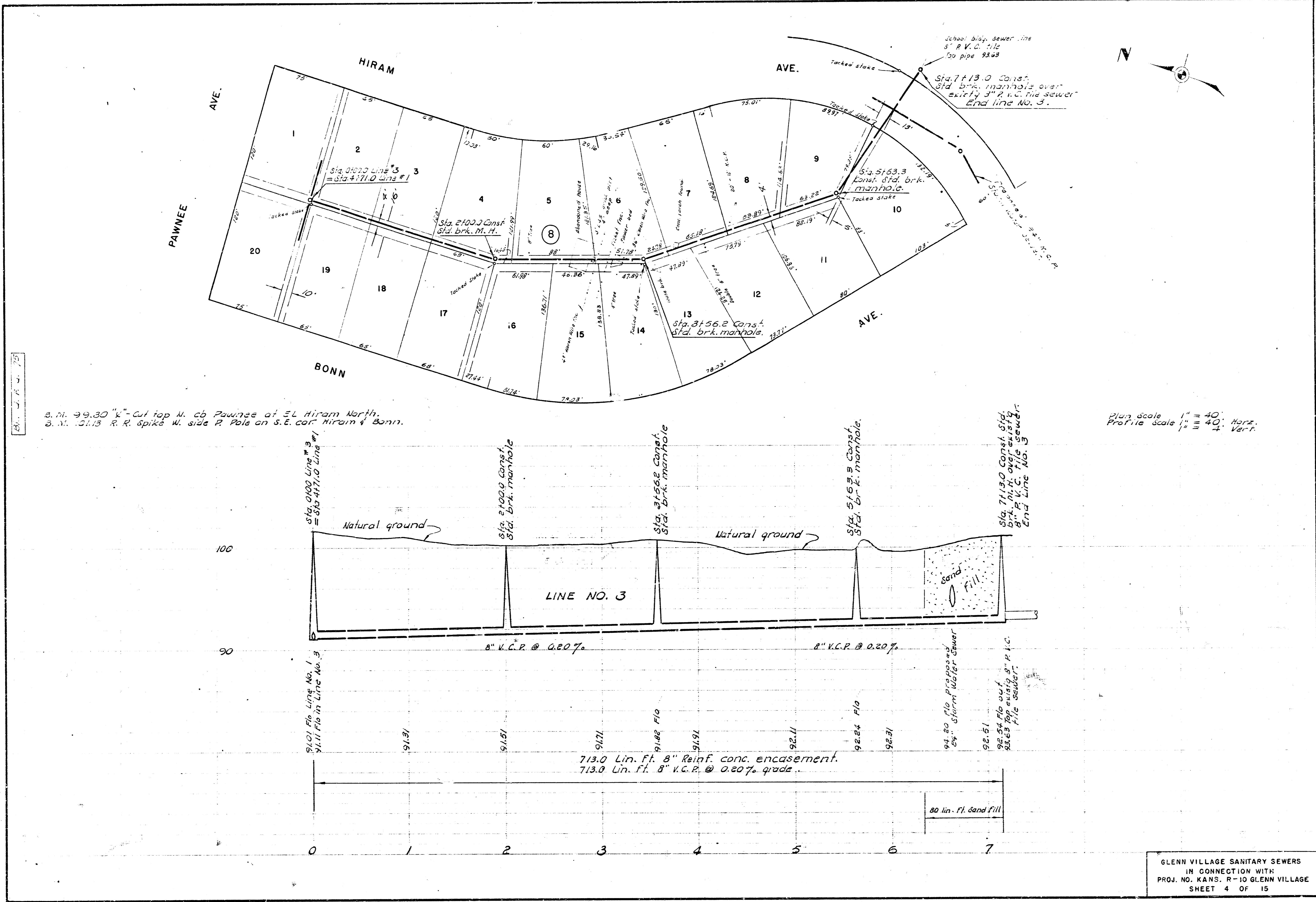
- B.M. 101942 City Std. on S.E. cor. Glenn & Pawnee.
- B.M. 9930 X-Cut top H. co. Pawnee at E.L. Hiram north.
- B.M. 102135 S.E. cor. conc. Porch No # 2403 S. Bennett.

Plan Scale 1" = 40'  
Profile Scale 1" = 40' Horiz.  
1" = 4' Vert.



2. N. 102.135 S.E. cor. cons. Rurch No. 2403 S. Bennett.  
 3. N. 101.75 N.E. cor. cons. porch No. 2455 South Bennett.  
 3. M. 101.13 R.R. Spike W. side P. Feas on S.E. cor. Hiram & Bonn.

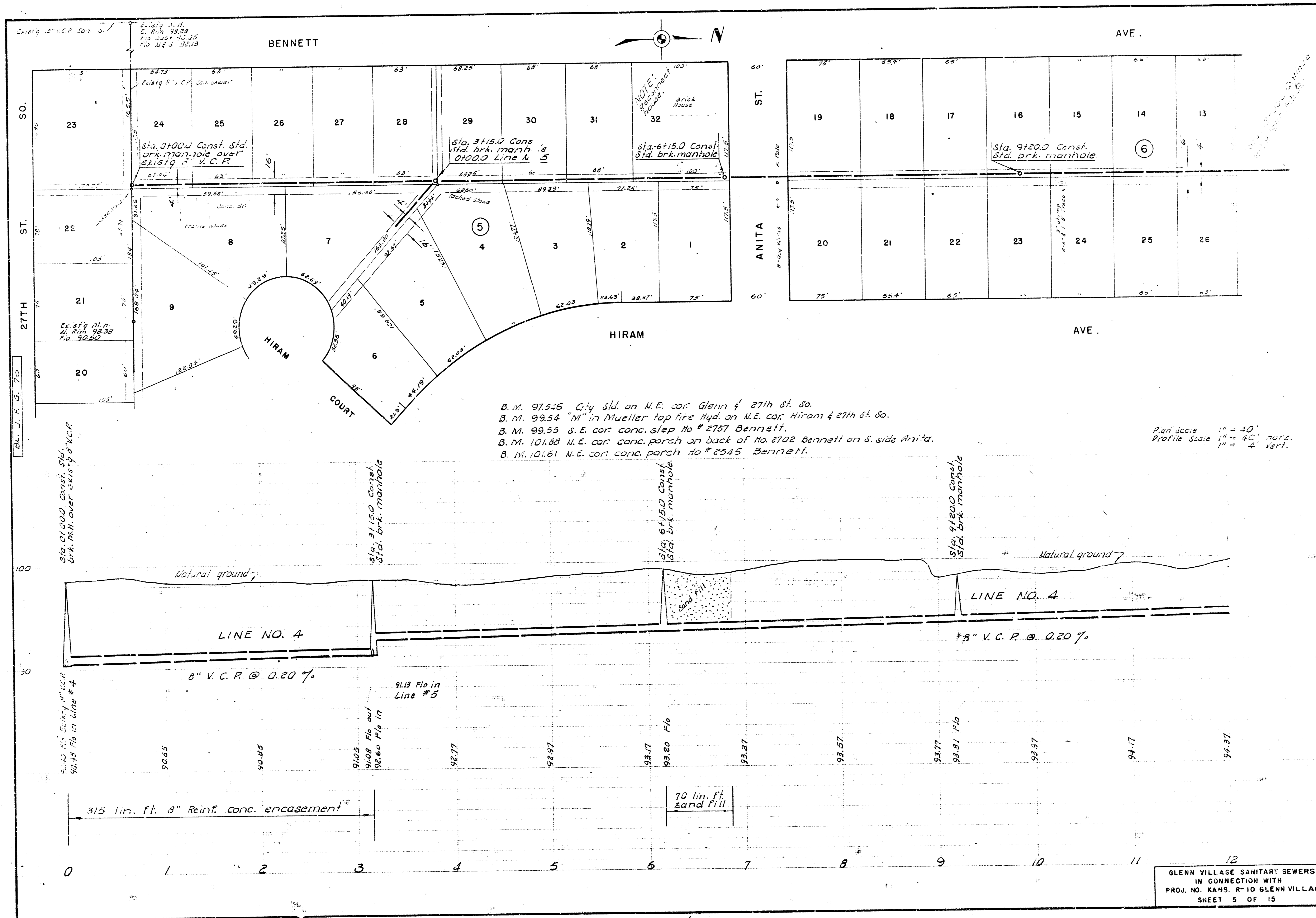
Plan scale 1" = 40'  
 Profile scale 1" = 40' vert.



SHEET NO. 4 OF 15

2. n. 39.30' k' - Cut top W. cb Pawnee at EL Hiram North.  
 3. n. 31.13' R.R. Spike W. side P. Pole on S.E. cor. Hiram & Bonn.

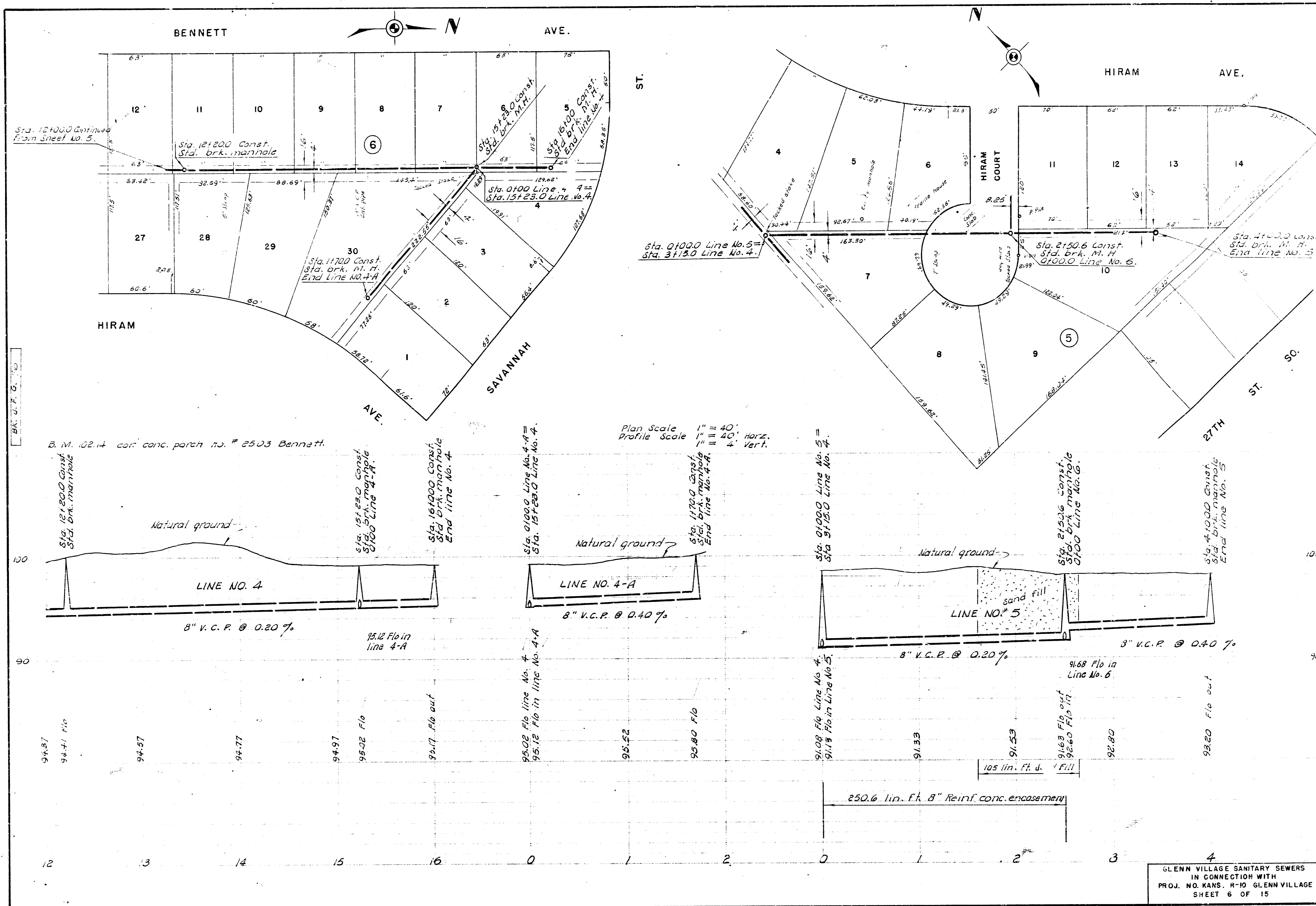
Plan scale 1" = 40'  
 Profile scale 1" = 40' Vert.



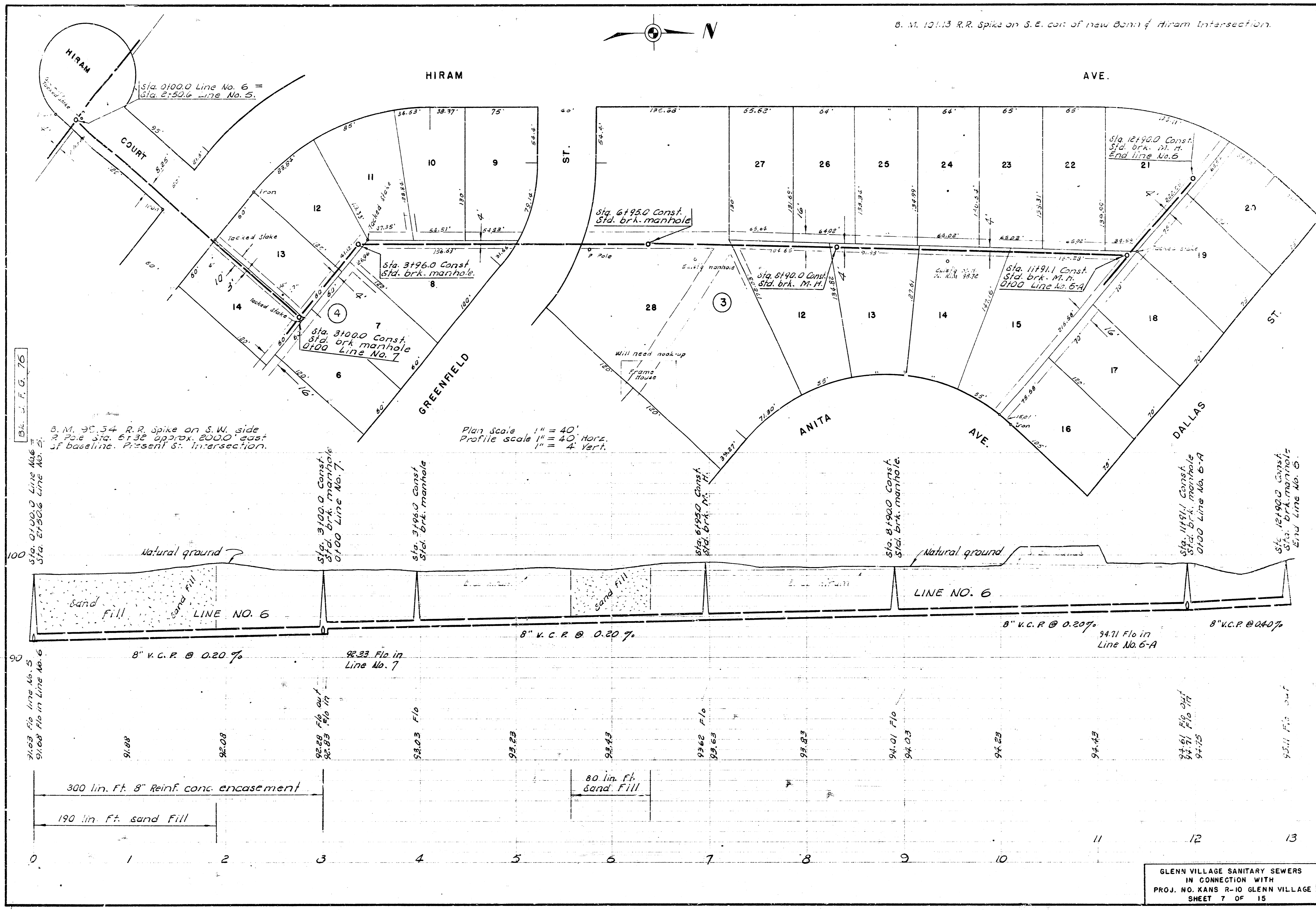
B.M. 97.546 City s.d. on N.E. cor. Glenn & 27th St. So.  
 B.M. 99.54 "M" in Mueller tap line Hyd. on N.E. cor. Hiram & 27th St. So.  
 B.M. 99.55 S.E. cor. conc. step No. 2757 Bennett.  
 B.M. 101.68 N.E. cor. conc. porch on back of No. 2702 Bennett on S. side Anita.  
 B.M. 101.61 N.E. cor. conc. porch No. 2545 Bennett.

Plan Scale 1" = 40'  
 Profile Scale 1" = 4' vert.

GLENN VILLAGE SANITARY SEWERS  
 IN CONNECTION WITH  
 PROJ. NO. KANS. R-10 GLENN VILLAGE  
 SHEET 5 OF 15



GLENN VILLAGE SANITARY SEWERS  
 IN CONNECTION WITH  
 PROJ. NO. KANS. R-10 GLENN VILLAGE  
 SHEET 6 OF 15



B. M. 12113 R.R. Spike on S.E. cor. of new Bonn & Hiram Intersection.

Blk. J. F. G. 75

B. M. 90.54 R.R. spike on S.W. side  
R. Pole Sta. 6132 approx. 200.0' east  
of baseline. Present S. Intersection.

Plan scale 1" = 40'  
Profile scale 1" = 40' Horiz.  
1" = 4' Vert.

Sta. 0100.0 Line No. 5  
Sta. 2750.0 Line No. 6

Sta. 3100.0 Const.  
Std. brk. manhole  
0100 Line No. 7

Sta. 3196.0 Const.  
Std. brk. manhole

Sta. 6195.0 Const.  
Std. brk. M.H.

Sta. 6190.0 Const.  
Std. brk. M.H.

Sta. 8190.0 Const.  
Std. brk. manhole

Sta. 11911.0 Const.  
Std. brk. M.H.  
0100 Line No. 6-A

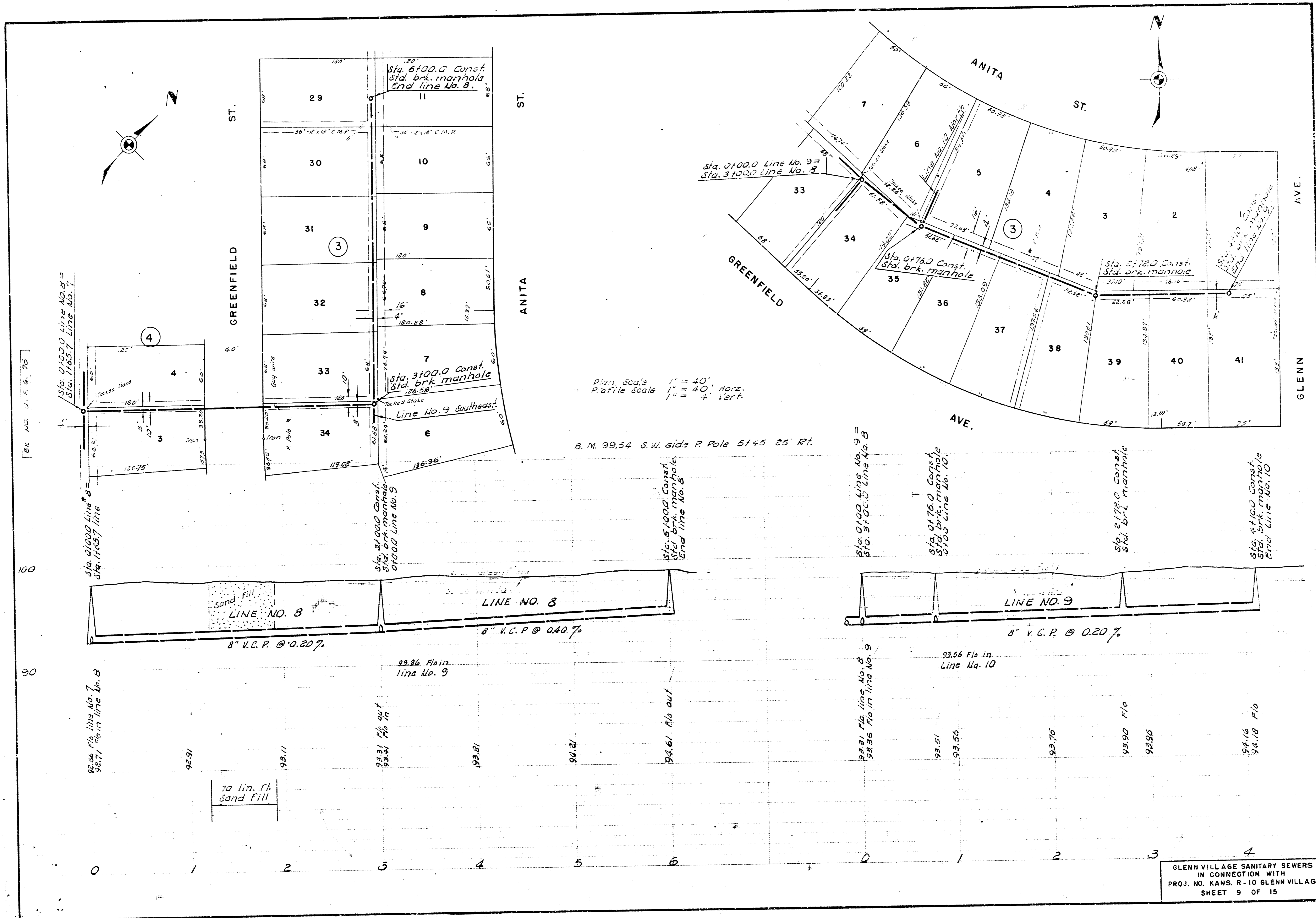
Sta. 12190.0 Const.  
Std. brk. manhole  
End line No. 6

300 lin. Ft. 8" Reinf. conc. encasement  
190 lin. Ft. sand Fill

80 lin. Ft. sand Fill

GLENN VILLAGE SANITARY SEWERS  
IN CONNECTION WITH  
PROJ. NO. KANS R-10 GLENN VILLAGE  
SHEET 7 OF 15

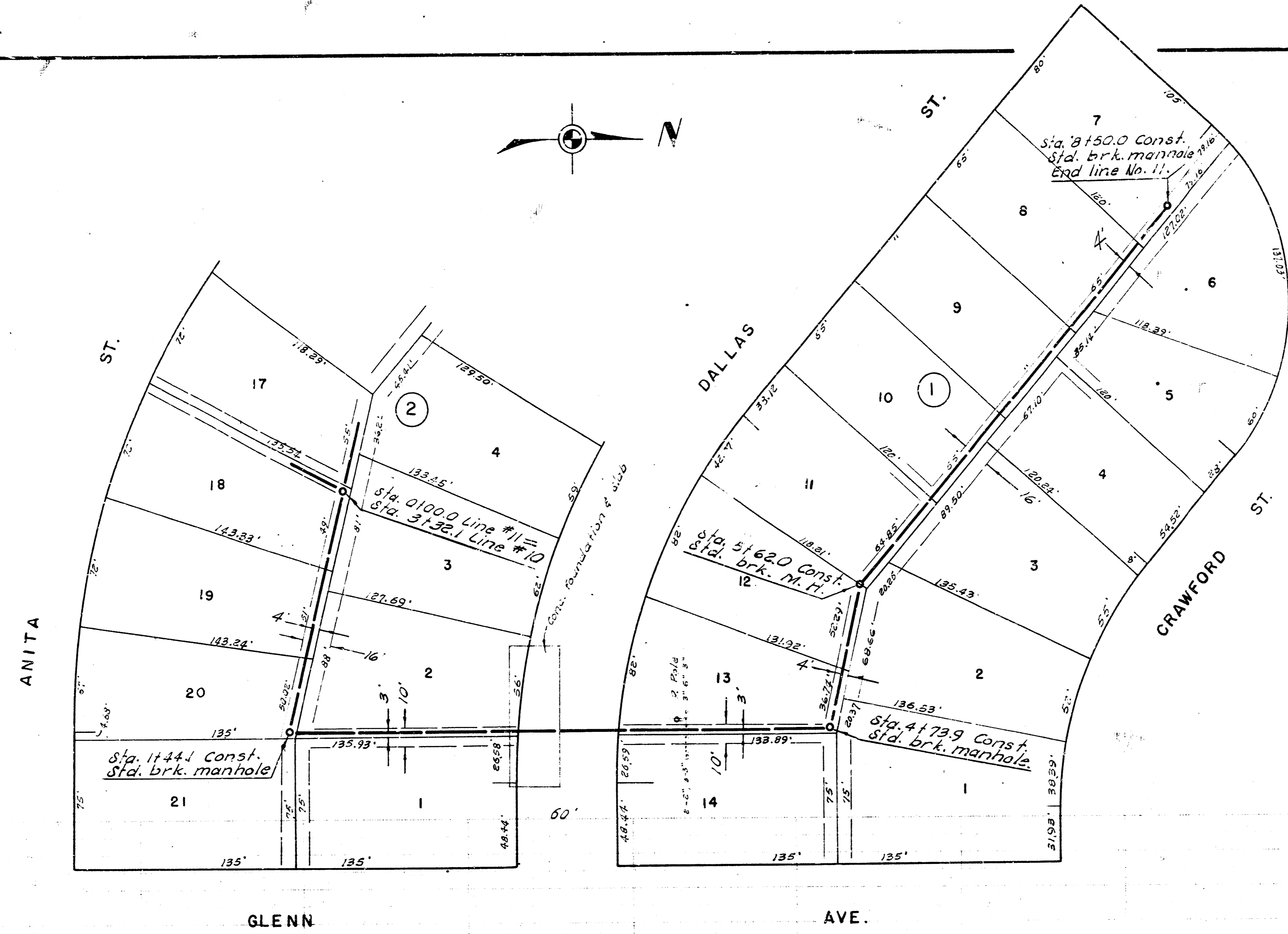




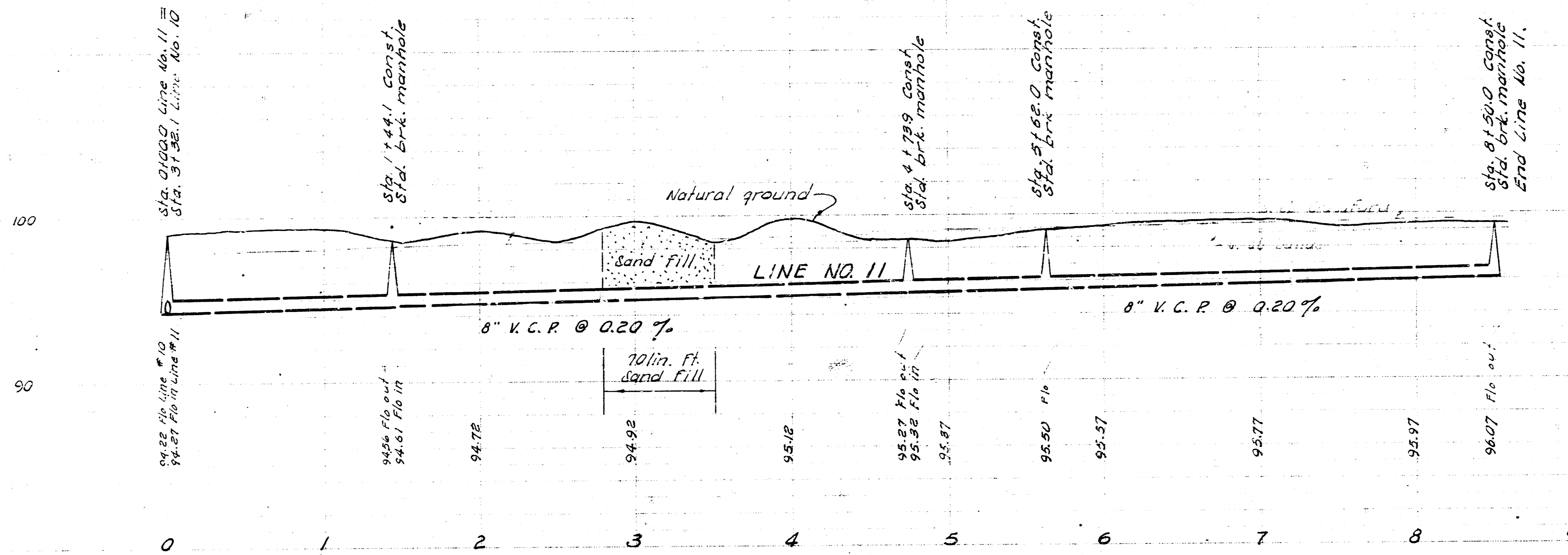


Bl. V. F. G. 76

B. M. 10113 R. R. spike W. side P. Pole on S. E. cor. Hiram & Bonn.

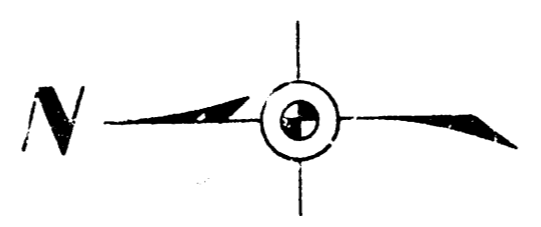


Plan Scale 1" = 40'  
Profile Scale 1" = 40' Horiz.  
1" = 4' Vert.

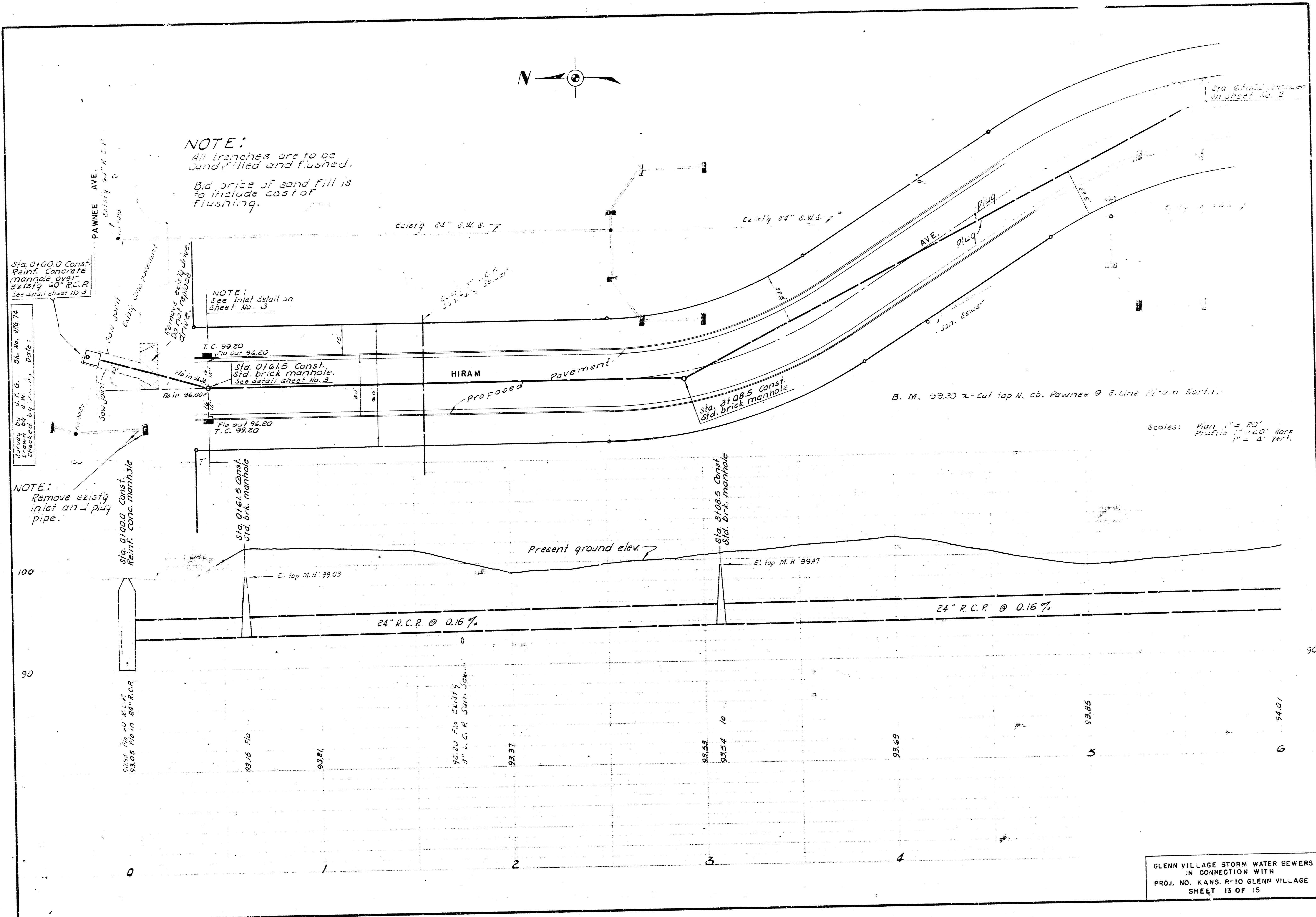


GLENN VILLAGE SANITARY SEWERS  
IN CONNECTION WITH  
PROJ. NO. KANS. R-10 GLENN VILLAGE  
SHEET 11 OF 15

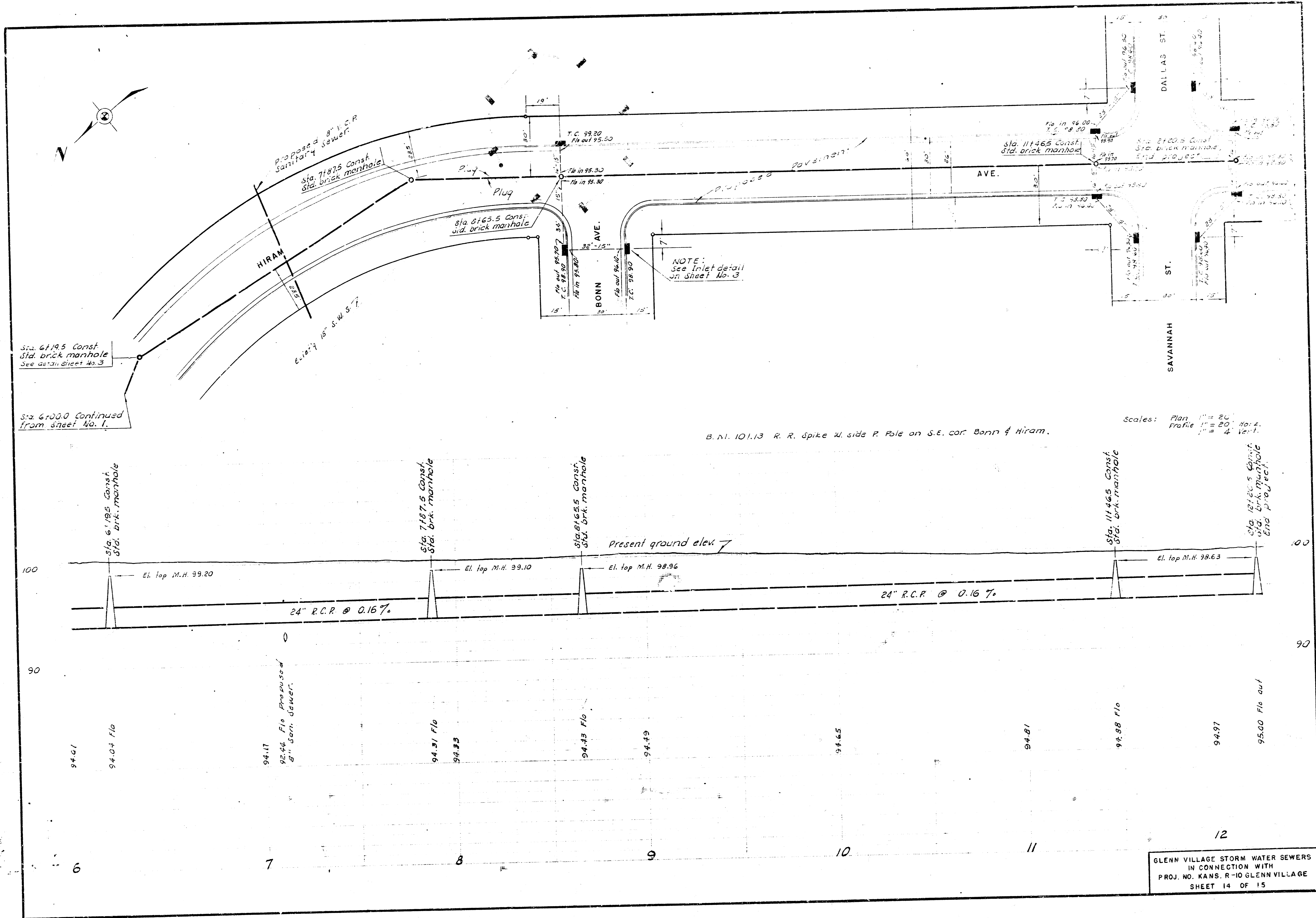




**NOTE:**  
 All trenches are to be  
 sand filled and flushed.  
 Bid price of sand fill is  
 to include cost of  
 flushing.



GLENN VILLAGE STORM WATER SEWERS  
 IN CONNECTION WITH  
 PROJ. NO. KANS. R-10 GLENN VILLAGE  
 SHEET 13 OF 15



Sta. 6119.5 Const. Std. brick manhole. See detail sheet No. 3.

Sta. 6100.0 Continued from sheet No. 1.

NOTE: See Inlet detail on sheet No. 3.

B. N. 10.13 R. R. spike W. side P. Pole on S.E. cor. Bonn & Hiram.

Scales: Plan 1" = 20', Profile 1" = 20', Vert. 1" = 4'

6

7

8

9

10

11

12

GLENN VILLAGE STORM WATER SEWERS  
IN CONNECTION WITH  
PROJ. NO. KANS. R-10 GLENN VILLAGE  
SHEET 14 OF 15

