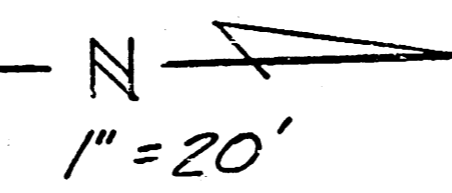
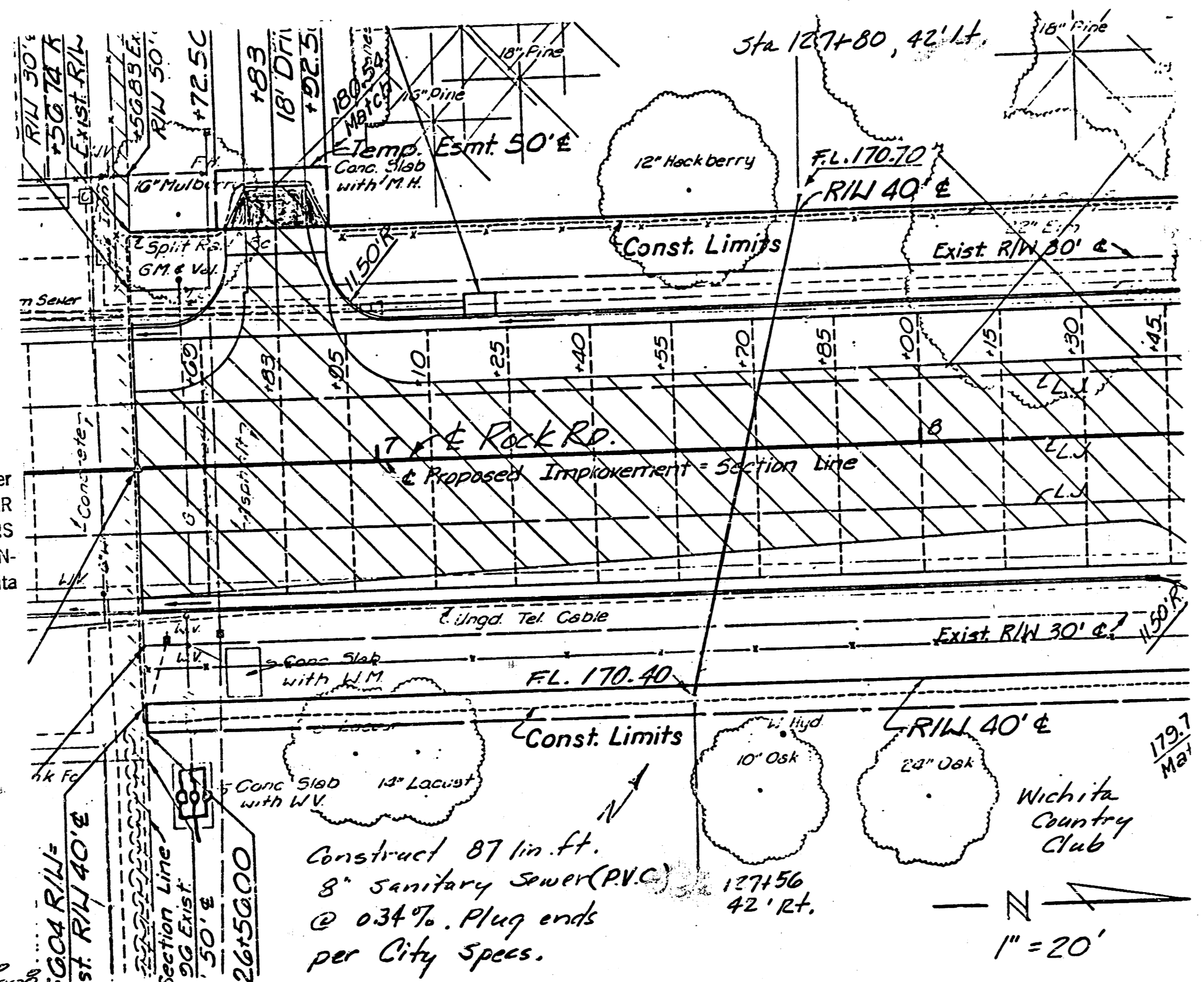


APPROVED AS NOTED
 By CITY ENGINEER OF WICHITA
 Sanitary Sewers *ODE W/2018*
 Storm Sewers
 Driveway Approaches

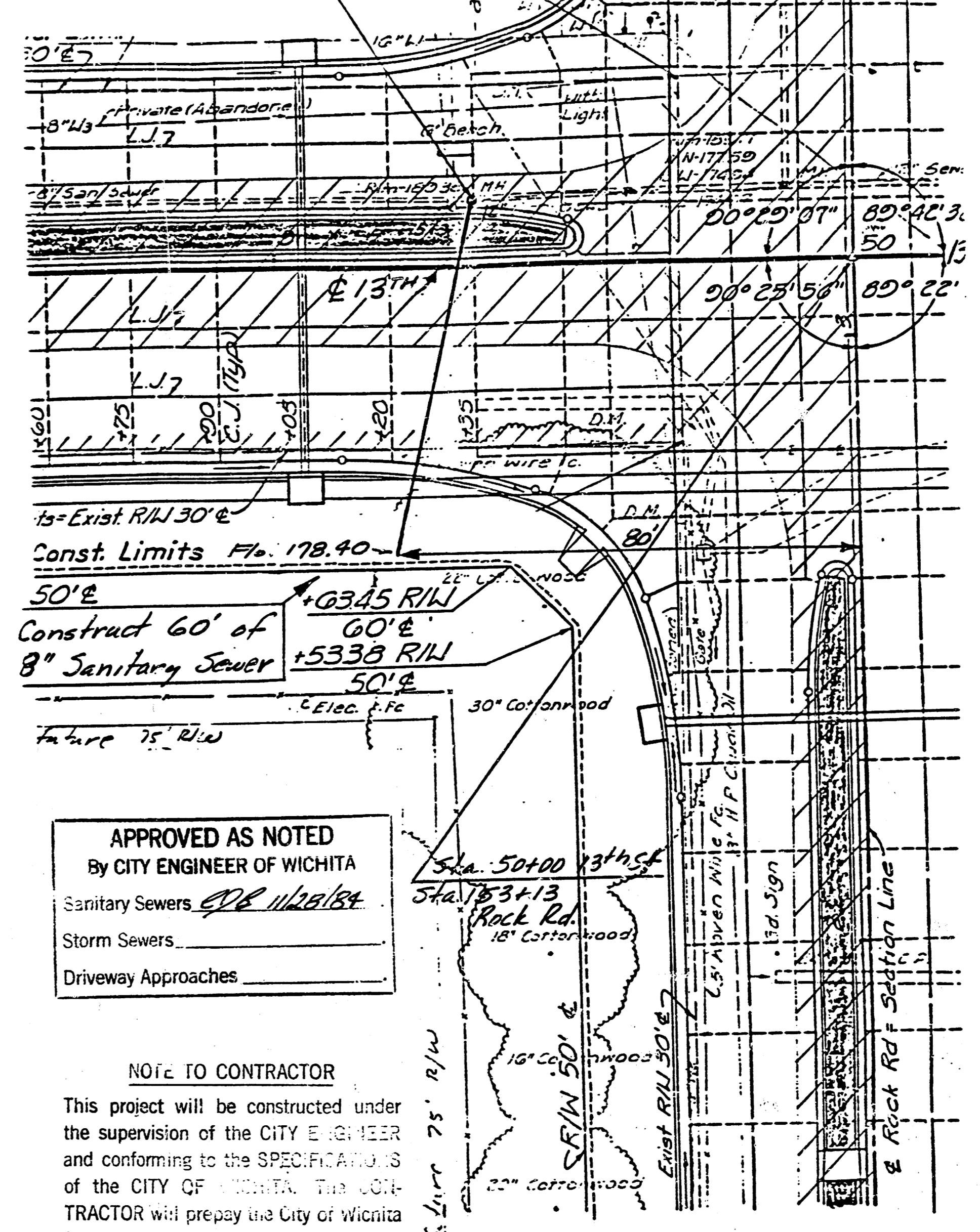
NOTE TO CONTRACTOR
 This project will be constructed under the supervision of the CITY ENGINEER and conforming to the SPECIFICATIONS of the CITY OF WICHITA. The CONTRACTOR will prepay the City of Wichita for all costs of inspection.



Sanitary Sewer
 Hartmoor
 468-76-245-80000-000-000-008

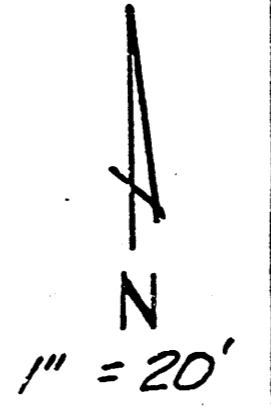


Connect to existing M.H.
 Fla in 177.80



APPROVED AS NOTED
 By CITY ENGINEER OF WICHITA
 Sanitary Sewers *ODE W/2018*
 Storm Sewers
 Driveway Approaches

NOTE TO CONTRACTOR
 This project will be constructed under the supervision of the CITY ENGINEER and conforming to the SPECIFICATIONS of the CITY OF WICHITA. The CONTRACTOR will prepay the City of Wichita for all costs of inspection.



Sanitary Sewer Extension
 S.W. Cor. 13th & Rock Rd.
 468-76-245-80000-000-000-008

PRIVATE SANITARY SEWER EXTENSION
 FOR HARTMOOR FARMS
 468-76-245-80000-000-000-008