

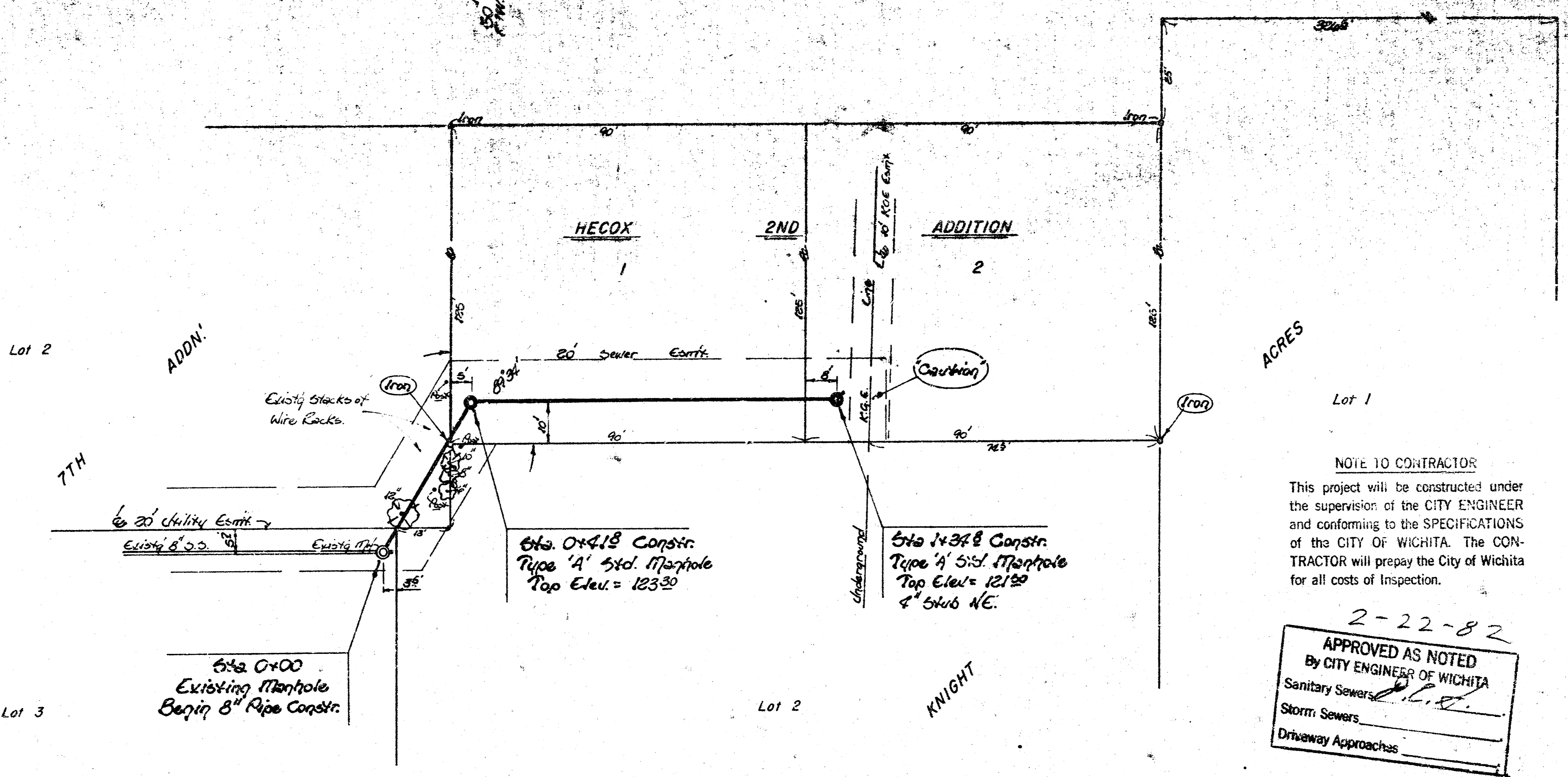
City Std. Div. 16' N. of 2' E. of S.E. Corner -
4 28' E. of the Intersection of Central.

CENTRAL AVE.

SHERIDAN

GALYARDTS

KNIGHT

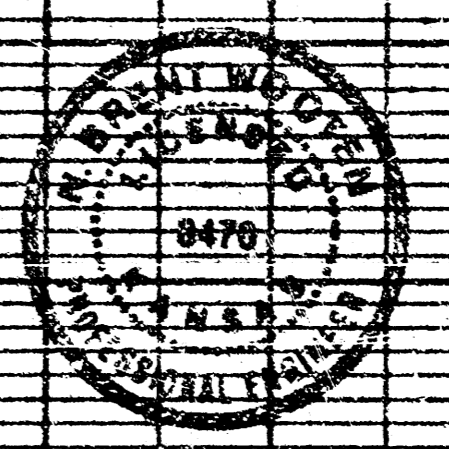
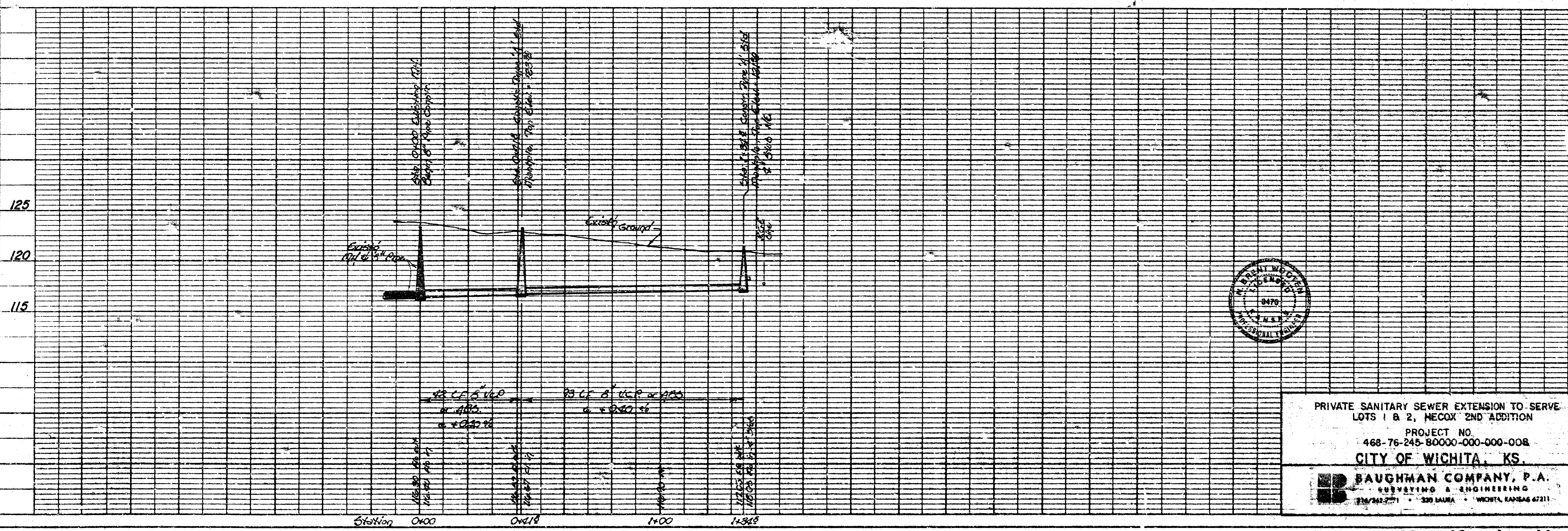


NOTE TO CONTRACTOR
This project will be constructed under the supervision of the CITY ENGINEER and conforming to the SPECIFICATIONS of the CITY OF WICHITA. The CONTRACTOR will prepay the City of Wichita for all costs of Inspection.

2-22-82

APPROVED AS NOTED
By CITY ENGINEER OF WICHITA
Sanitary Sewers
Storm Sewers
Driveway Approaches

Note - Contractor to note Underground H.G.E. Lines and have it located if necessary. Approx. Depth varies from 25 to 30 feet.
Type of Std. Manholes to be constructed. Property Owner to be responsible for Reestablishing any traps moved due to constructing.
⊗ - Indicates Tree Removal.



PRIVATE SANITARY SEWER EXTENSION TO SERVE
LOTS 1 & 2, HECOX 2ND ADDITION
PROJECT NO.
468-76-245-80000-000-008
CITY OF WICHITA, KS.
BAUGHMAN COMPANY, P.A.
SURVEYING & ENGINEERING
230 S. LAUREL • WICHITA, KANSAS 67211