

SANITARY SEWER PLANS

FOR

SOUTHWESTERN BELL FACILITY AT

HI-TECH INDUSTRIAL PARK SECOND ADDITION

PROJECT NO.

468-76-245-80001-000-000-144

CITY OF WICHITA, KANSAS
 MICHAEL E. LINDEBAK, CITY ENGINEER
 DECEMBER, 1987

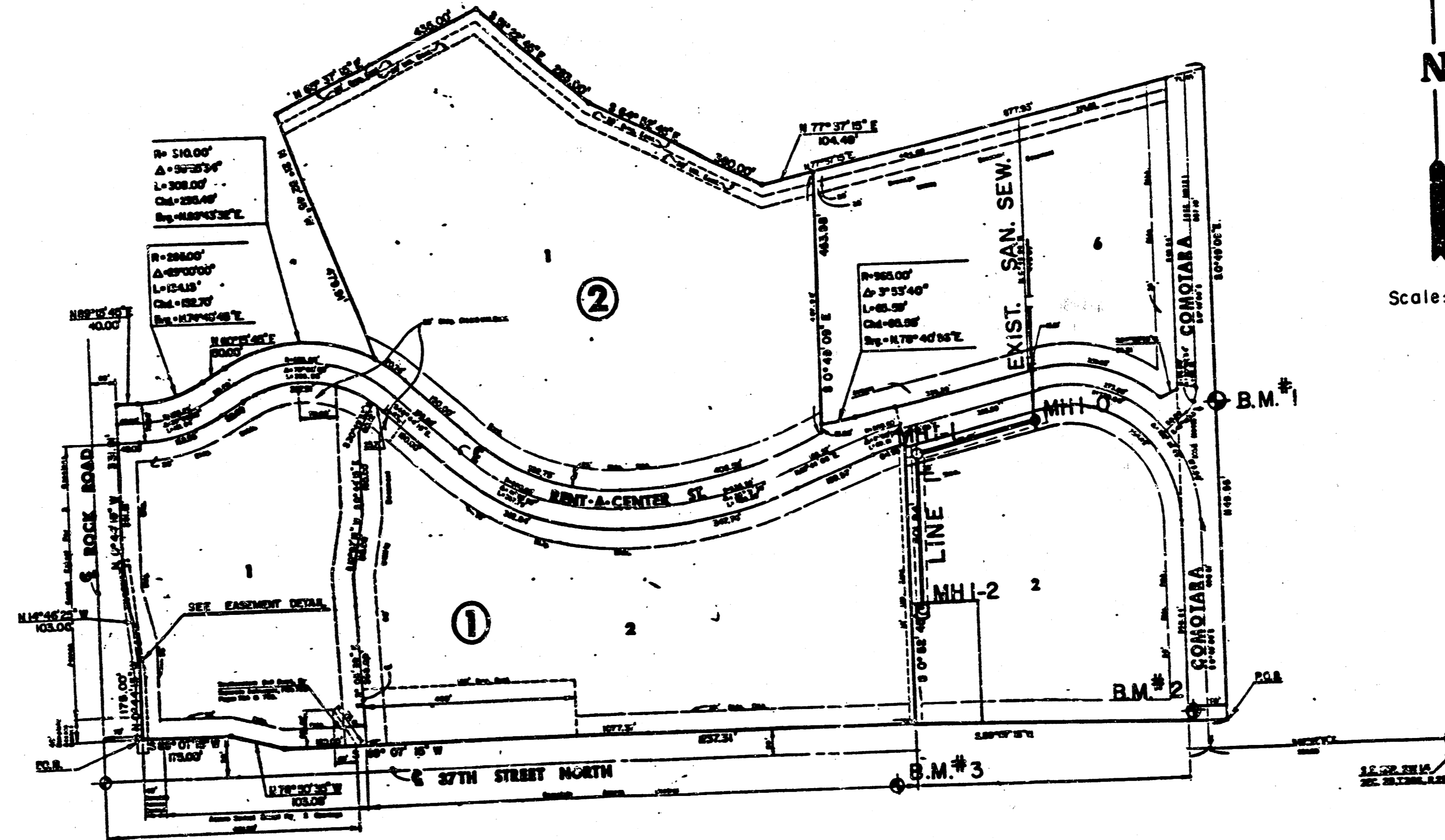
GENERAL NOTES

1. THE CONTRACTOR SHALL BE RESPONSIBLE FOR PRESERVING PROPERTY IRONS. THE CONTRACTOR SHALL BE REQUIRED TO RE-ESTABLISH ANY PROPERTY IRONS WHICH ARE DAMAGED OR DESTROYED BY HIS CONSTRUCTION OPERATIONS. SUCH IRONS SHALL BE RE-ESTABLISHED BY A LICENSED LAND SURVEYOR OR A LICENSED PROFESSIONAL ENGINEER IN ACCORDANCE WITH STATE LAWS.
2. EXISTING UTILITIES AND THEIR LOCATIONS, AS SHOWN ON THE PLANS, REPRESENT THE BEST INFORMATION OBTAINABLE FOR DESIGN. LOCATION INFORMATION HAS BEEN OBTAINED FROM THE VARIOUS UTILITY COMPANIES AND IS EITHER FROM COMPANY RECORD DRAWINGS OR COMPANY PROVIDED FIELD LOCATIONS. THE PLAN LOCATIONS SHOWN ARE NOT GUARANTEED. ADDITIONAL EXISTING UTILITIES MAY ALSO BE ENCOUNTERED.
3. ALL STUBS AND PLUGGED PIPES SHALL BE LOCATED WITH GREEN PLASTIC TAPE IN THE SAME MANNER AS RISERS.
4. COST OF EXCAVATION, HAULING, AND DUMPING OF EXCESS EXCAVATION SHALL BE SUBSIDIARY TO THE PROJECT.
5. PRIOR TO LAYING SEWER LINES USING EXISTING STUBS IN EXISTING MANHOLES, THE CONTRACTOR SHALL EXPOSE AND VERIFY THE ELEVATION, GRADE AND ALIGNMENT OF EXISTING STUBS AND NOTIFY THE ENGINEER OF ANY DEVIATION FROM THE PLAN. WHERE CONNECTING TO AN EXISTING MANHOLE THAT DOES NOT HAVE AN EXISTING STUB OR THE STUB IS UNUSABLE DUE TO ELEVATION GRADE OR ALIGNMENT, THE CONTRACTOR SHALL RESHAPE THE EXISTING MANHOLE INVERT TO PROVIDE SMOOTH FLOW. THE COST OF RESHAPING EXISTING MANHOLE INVERTS IS INCIDENTAL TO THE PROJECT.
6. CONTRACTOR SHALL NOTIFY THE FOLLOWING COMPANIES PRIOR TO ANY EXCAVATION:

BELL TELEPHONE	1-316-571-2115
CABLEVISION	262-0661
KPAL GAS SERVICE COMPANY	263-7511
KANSAS GAS & ELECTRIC	264-1141
KANSAS ONE-CALL	1-800-344-7233

BENCH MARKS

- B.M. #1 "□" on SE cor of N. Inlet on E side Comotara 620' ± N of centerline of 37th St. North
Elev. = 213.28
- B.M. #2 "□" on TC at N. end of RW Return at 37th and Comotara.
Elev. = 219.79
- B.M. #3 "□" chiseled square NW cor concrete sign base 35' x West 4 1/4' S of SW cor Lot 2, Blk 2, Hi-Tech Industrial Park 2nd
Elev. = 210.47



INDEX TO DRAWINGS

SHEET NO.	DESCRIPTION
1	TITLE SHEET
2	LINE 1

APPROVED AS NOTED

By CITY ENGINEER OF WICHITA

Sanitary Sewers 302 11/188

Storm Sewers _____

Driveway / Approaches _____

Water Mains _____

NOTE TO CONTRACTOR

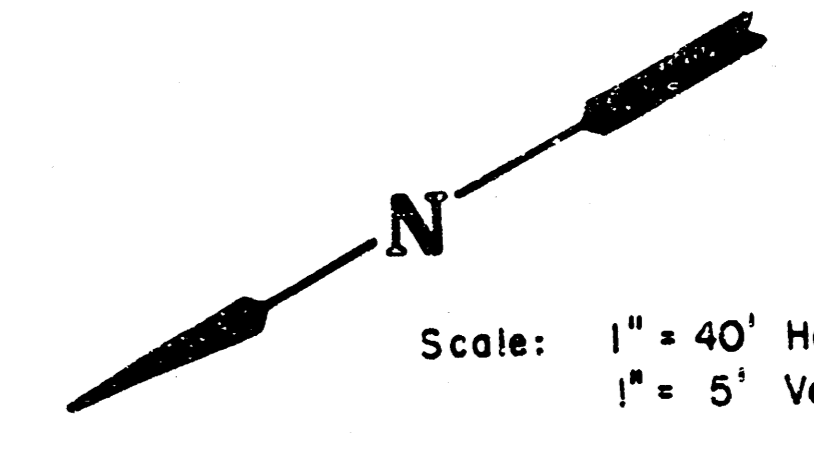
This project will be constructed under the supervision of the CITY ENGINEER and conforming to the SPECIFICATIONS OF THE CITY OF WICHITA. The CONTRACTOR will pay the City of Wichita for all costs of plan review, inspection and booking per contract.

POOLED



SE	SOUTHWESTERN BELL FACILITY AT HI-TECH INDUSTRIAL PARK SECOND ADDITION	Design DSS
	SANITARY SEWER PLANS	Drawn by DLM
MID-KANSAS ENGINEERING CONSULTANTS PA 3500 NORTH ROCK ROAD BUILDING 1800 WICHITA, KANSAS 67226		Checked by Date Dec. 1987 Job no.
682-6561		Sheet 1 of 2

FILMED FROM THE BEST AVAILABLE COPY



Scale: 1" = 40' Horiz.
 1" = 5' Vert.

HI • TECH

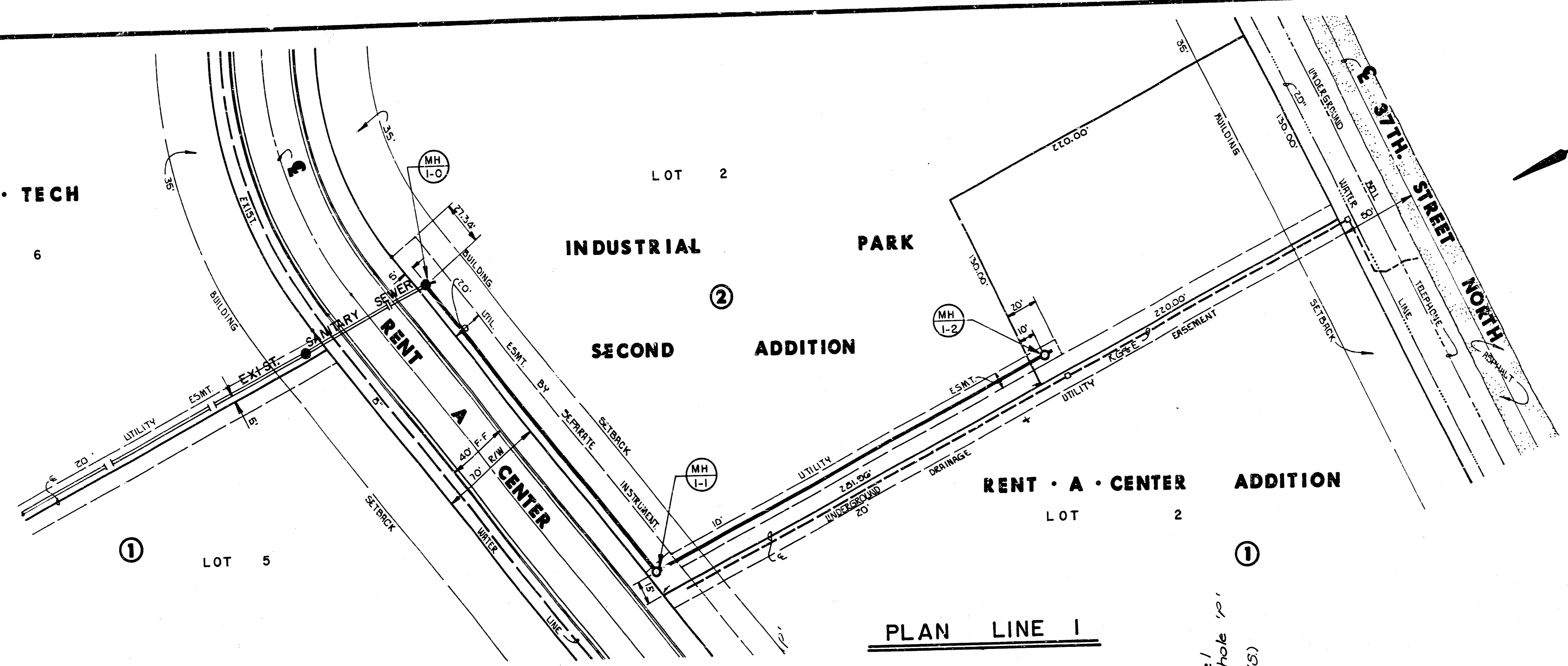
LOT 6

LOT 2

INDUSTRIAL
 PARK
 ②
 SECOND
 ADDITION

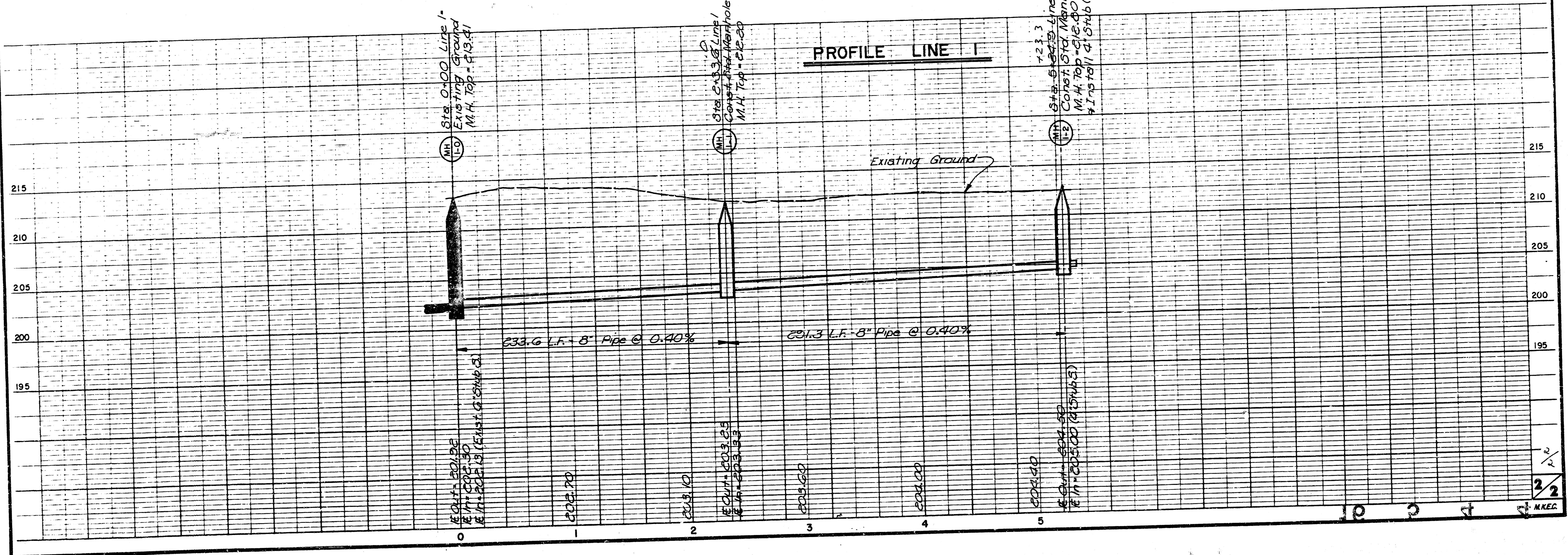
RENT • A • CENTER
 LOT 2
 ①

①
 LOT 5



PLAN LINE 1

PROFILE LINE 1



2/2
 MKEC