

SIPHON ENCLOSURE
 Use 6 sack paving mix
 15" V.C.P. & reinf. conc. encasement is
 to be bid as 1/2" 15" siphon.

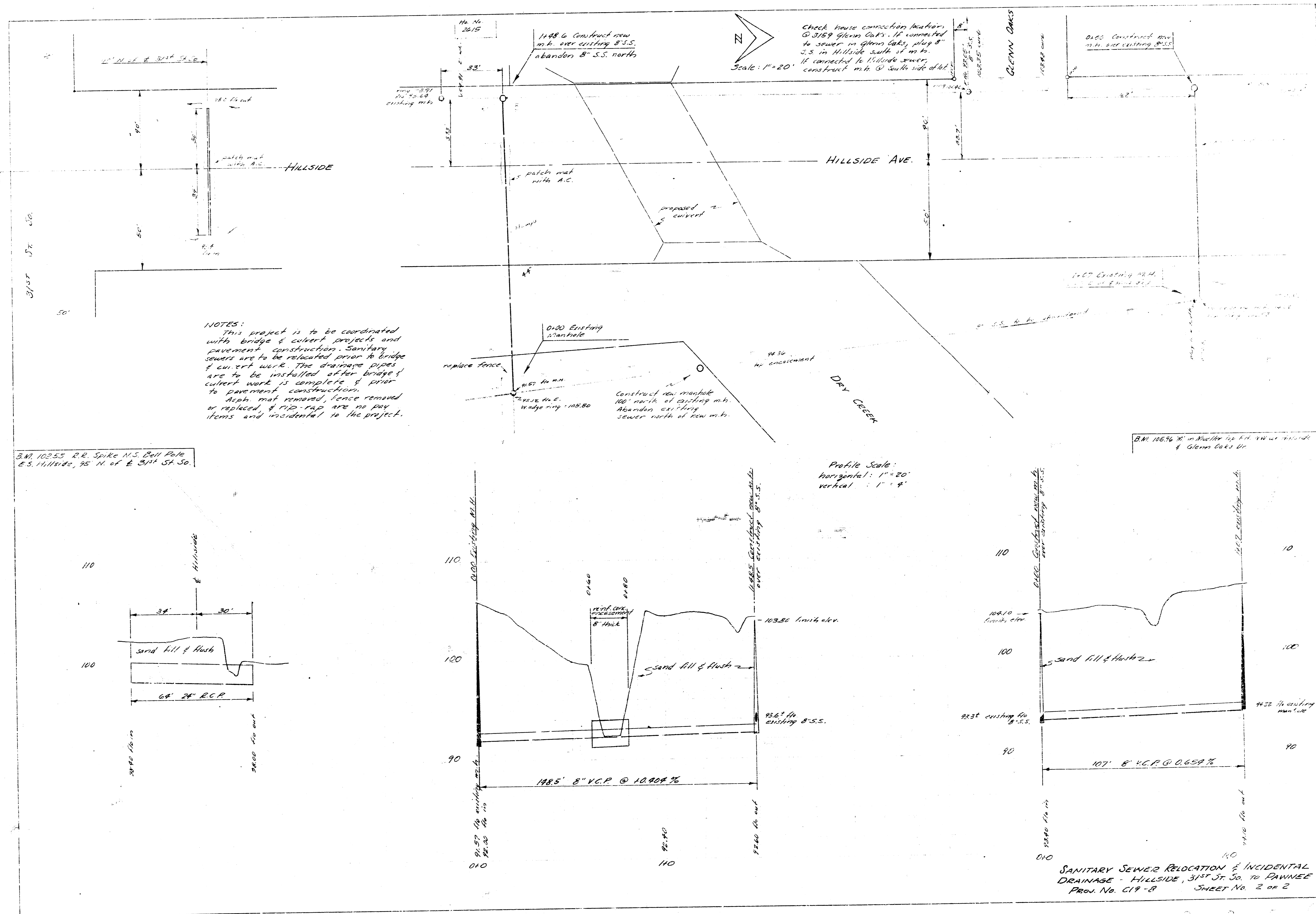
B.M. 105.78 N.E. Cor. Corn. Patch
 Ho # 2803 S. Hillside

1st. to square cut #1 Hillside "Wassall" (Sta 26+50.69)
 31.32' E. to nail in bed cap N side Ball pole
 41.57' SW to nail in bed cap S.E. side Ball pole
 48.00' NW to nail in bed cap SW side Ball pole

Install 100" 24" V.C.P. between existing man-
 holes & abandon existing siphon
 Bridge Contractor is to compact fill in
 old channel prior to sewer construction

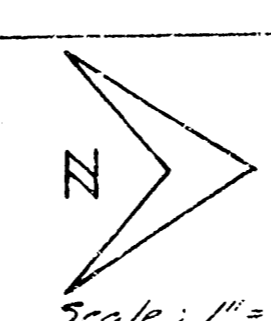
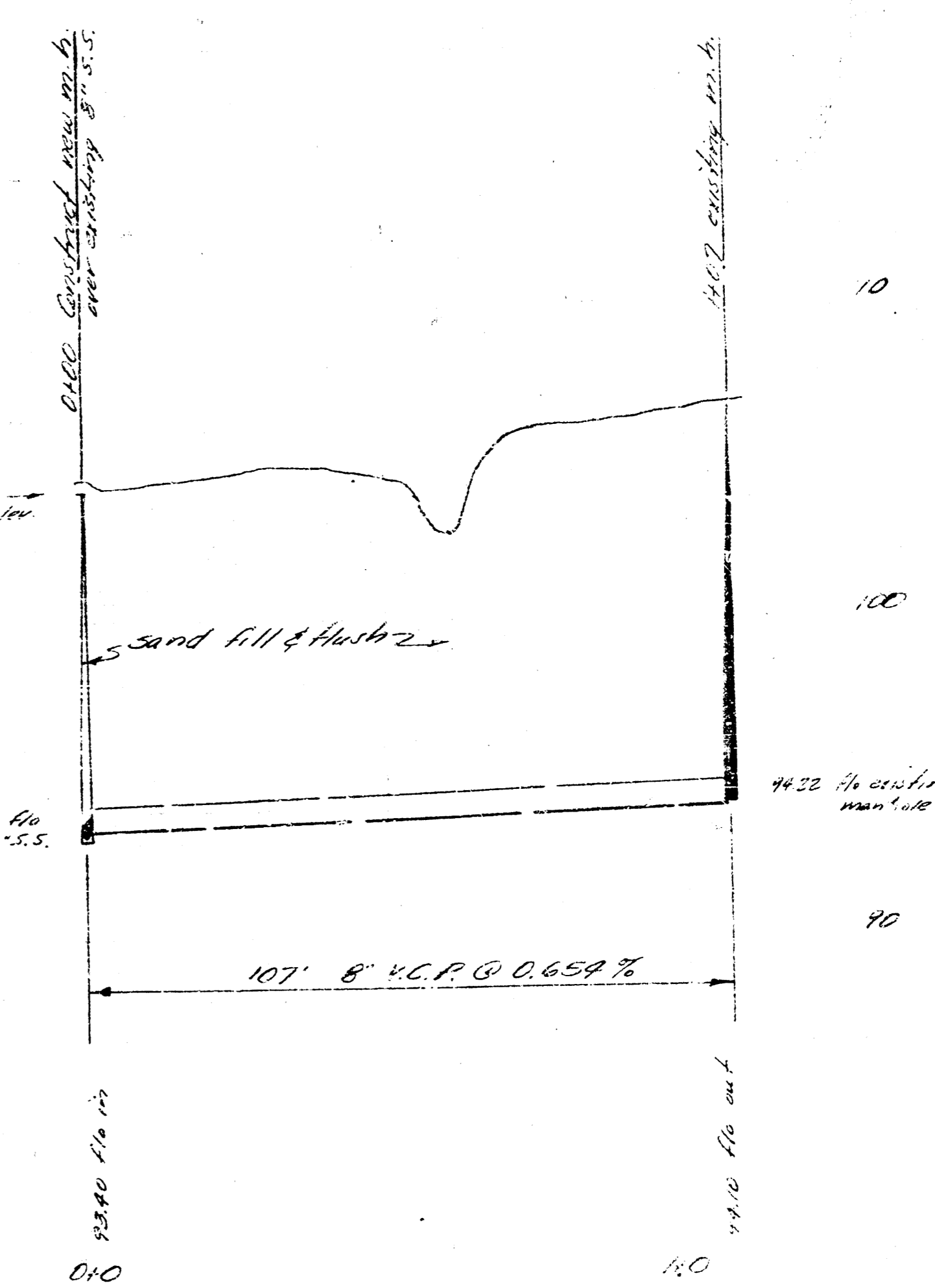
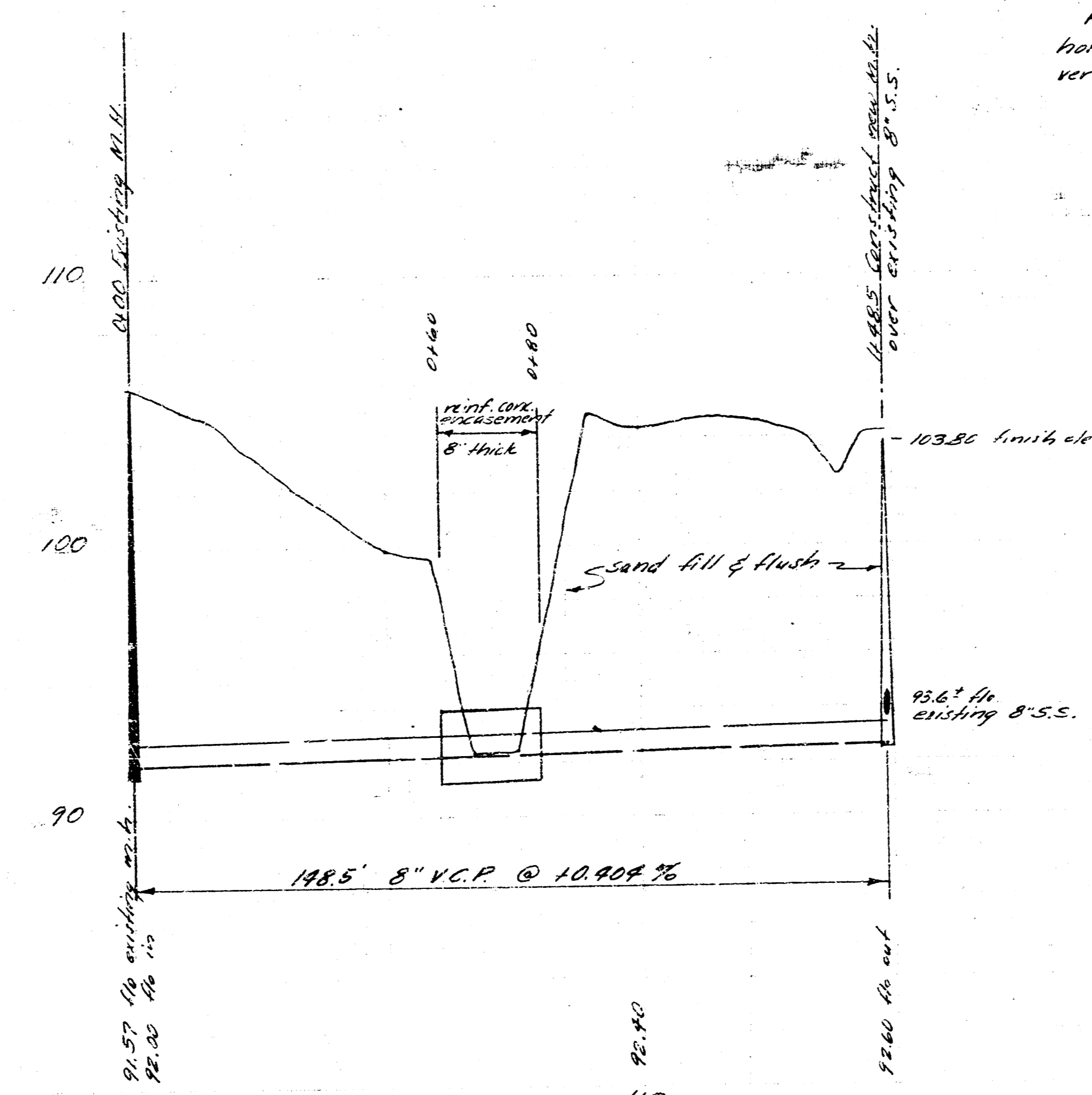
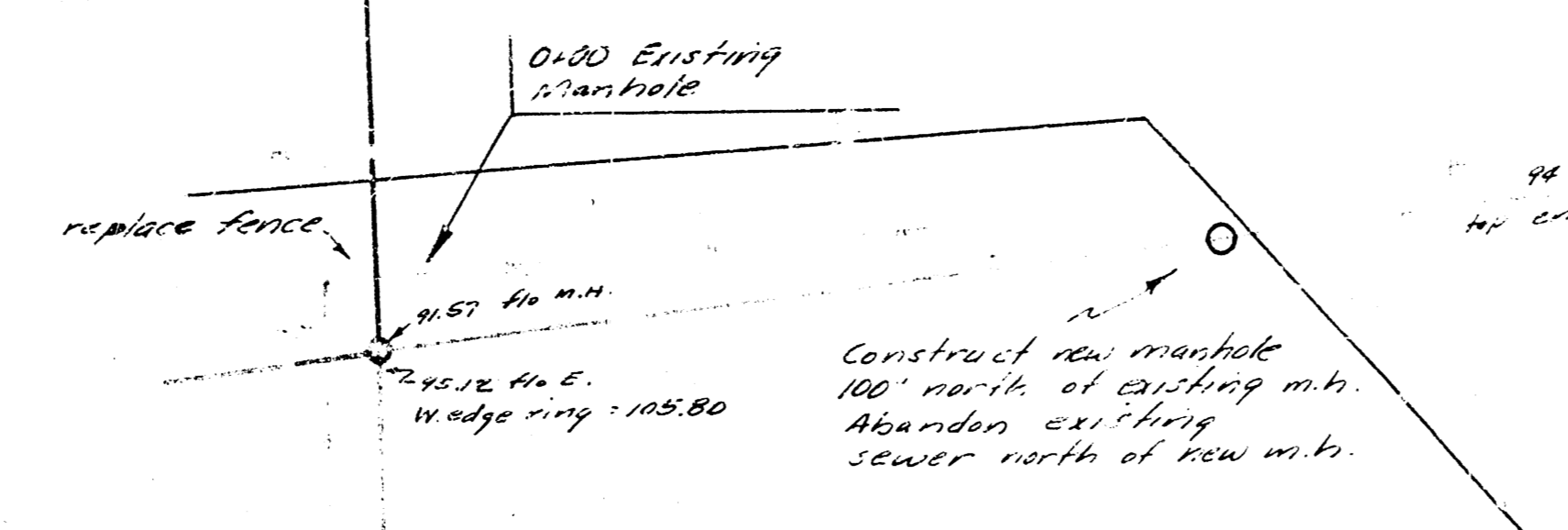
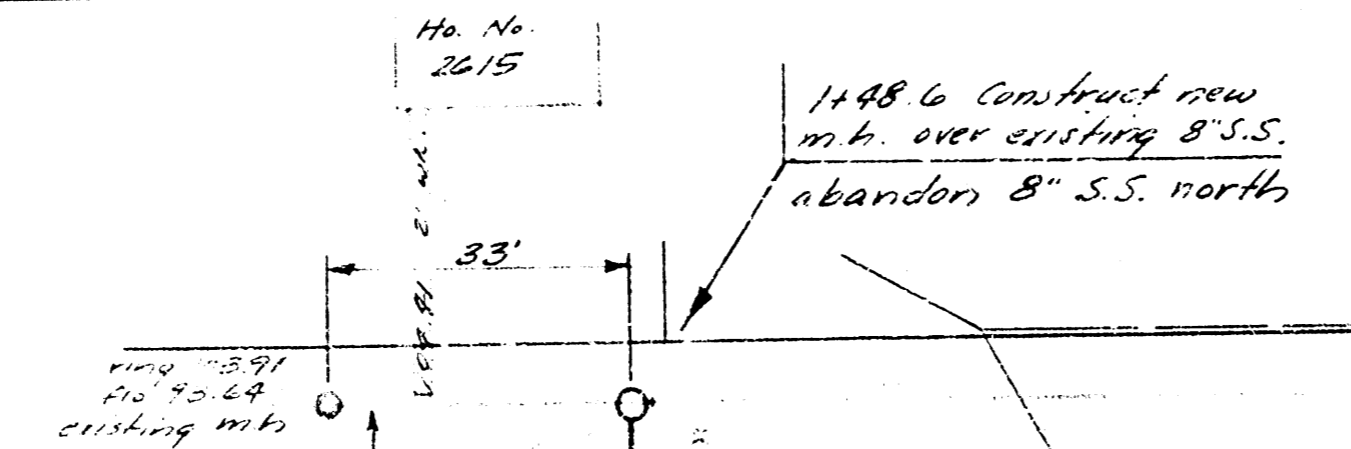
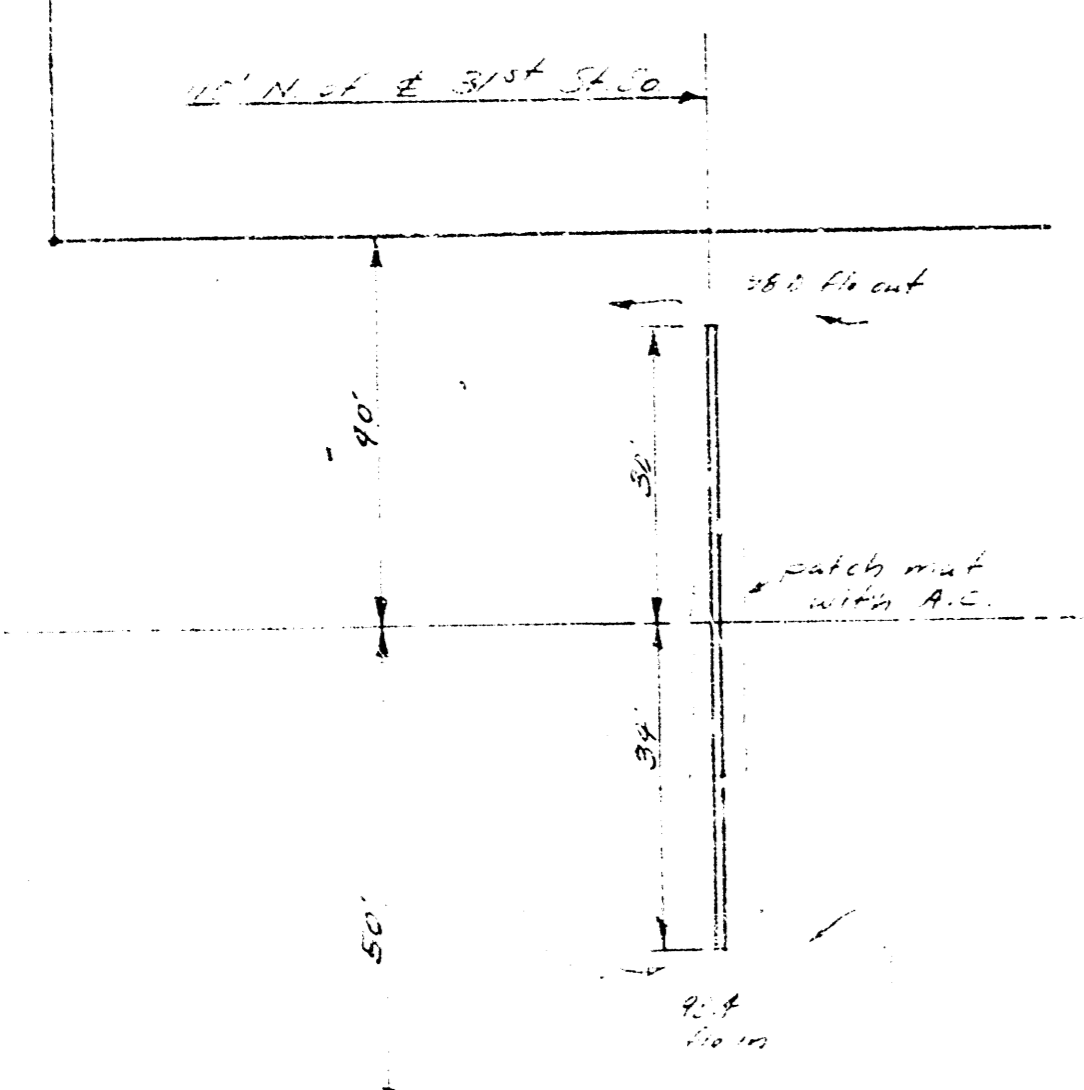
B.M. 102.89 1/2 cut top N. curve
 Range Ed. x N.L. Hillside

Revised 2/20/61
**SANITARY SEWER RELOCATION &
 INCIDENTAL DRAINAGE**
 HILLSIDE - 31ST ST. TO PAWNEE
 CITY OF WICHITA, KANSAS
 B. E. SMITH - CITY ENGINEER
 PROJ. CIT-8 SHEET NO. 1 OF 2



B.M. 10255 R.R. Spike N.S. Bell Pole
 E.S. Hillside, 95' N. of E. 31st St. So.

B.M. 10536 W. in Waller by E.H. Waller
 & Glenn Oaks Dr.



Check house connection location @ 3159 Glenn Oaks. If connected to sewer in Glenn Oaks, plus 8" S.S. in Hillside south of m.h. If connected to Hillside sewer, construct m.h. @ south side of lot.

31st St. So.

HILLSIDE AVE.

GLENN OAKS

DRY CREEK

Sanitary Sewer Relocation & Incidental Drainage - Hillside, 31st St. So. to Pawnee

Proj. No. C19-B SHEET No. 2 of 2