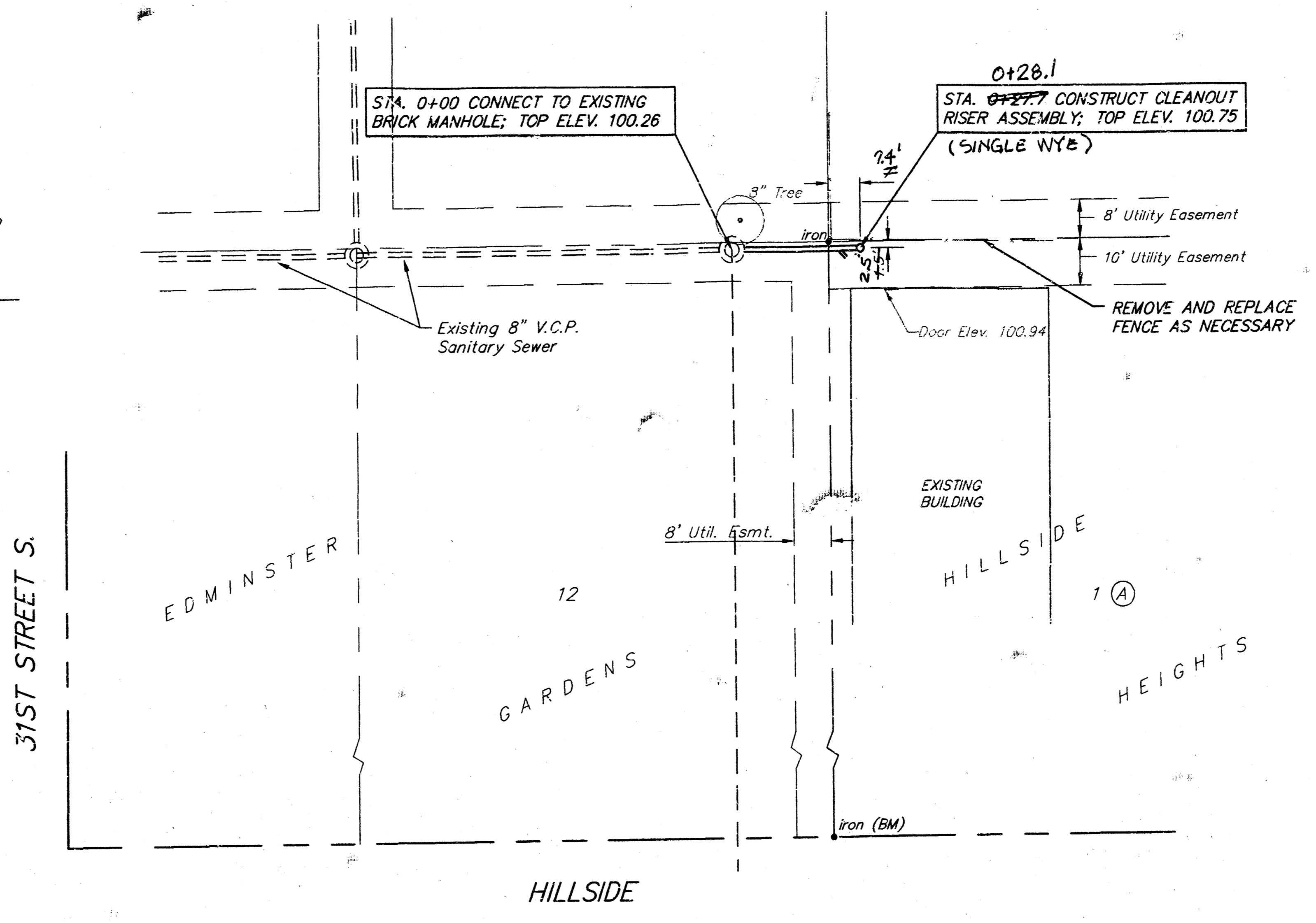
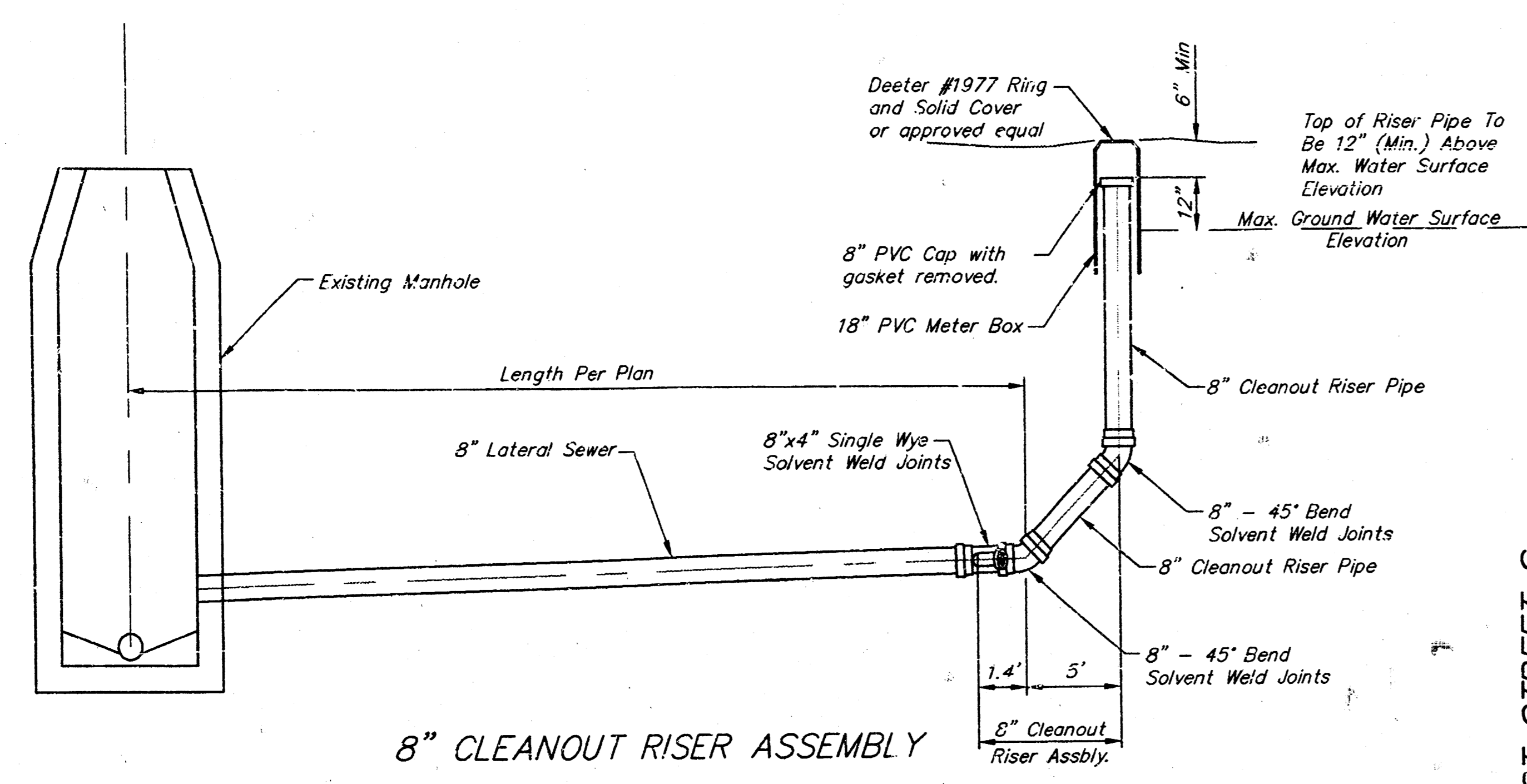


437 PPS

BENCH MARK: Top of Iron at S.E. corner of Lot 1, Block A, Hillside Heights; Elev. 99.78 City Datum



APPROVED AS NOTED
BY CITY ENGINEER OF WICHITA

Sanitary Sewers 1/14/94 URH

Storm Sewers _____

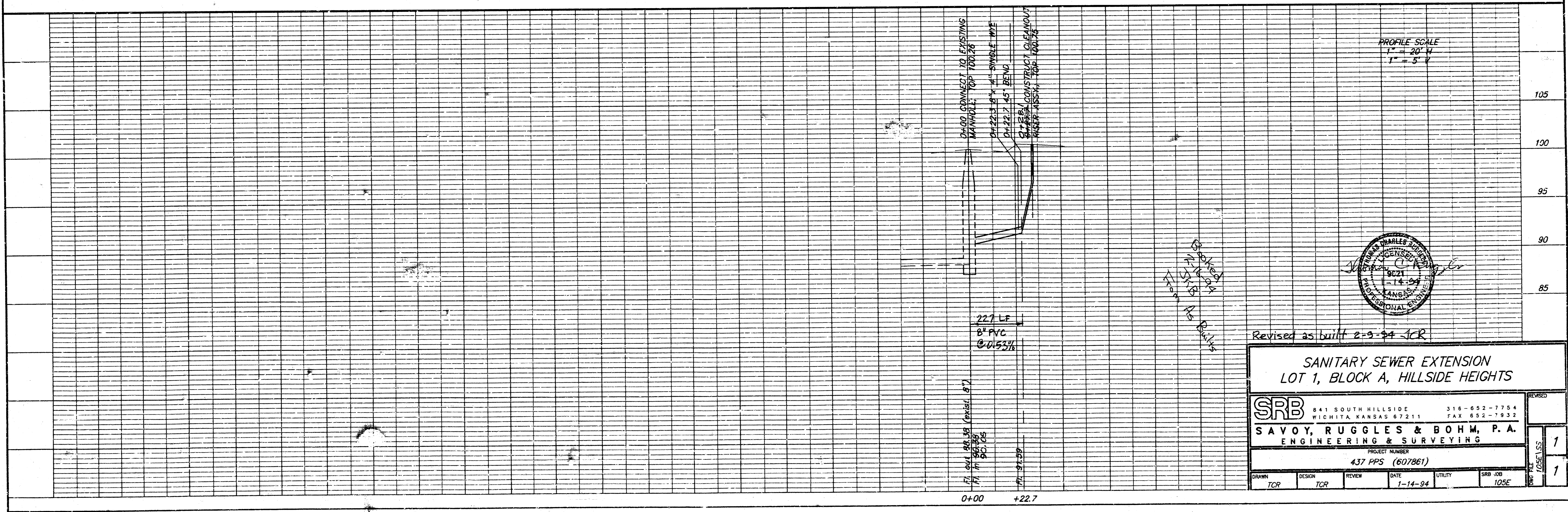
Driveway Approaches _____

Water Mains _____

Paving _____

NOTE TO CONTRACTOR

Inspection and testing for this project are to be provided by a Licensed Consulting Engineering Firm under contract with the Owner/Developer. Said inspection to be in accordance with the City of Wichita standard construction engineering practices and certified by a Licensed Professional Engineer. No work shall be performed in dedicated easements or public right-of-way by the Contractor without such inspection, nor shall any work be commenced without written authorization by the City Engineer.



Revised as built 2-9-94 JCR

**SANITARY SEWER EXTENSION
LOT 1, BLOCK A, HILLSIDE HEIGHTS**

SRB 841 SOUTH HILLSIDE 316-652-7754
WICHITA KANSAS 67211 FAX 652-7932

SAVOY, RUGGLES & BOHM, P.A.
ENGINEERING & SURVEYING

PROJECT NUMBER
437 PPS (607861)

DRWN	DESIGN	REVIEW	DATE	UTILITY	SRB JOB
TCR	TCR		1-14-94		105E

REVISED

NO. OF SHEETS	1
TOTAL SHEETS	1